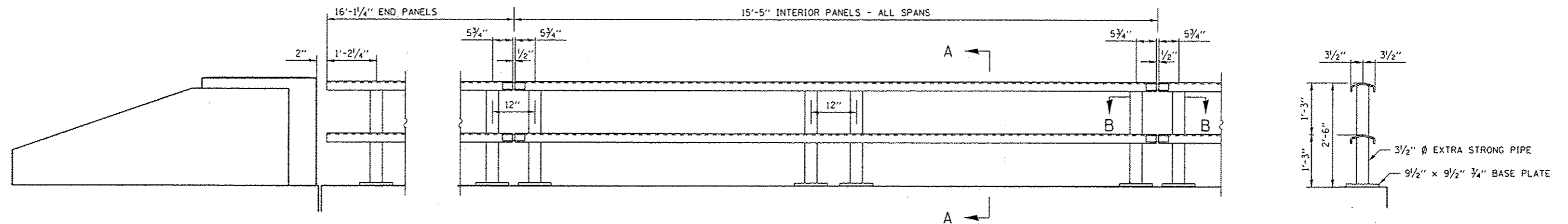


ELEVATION OF HANDRAILS

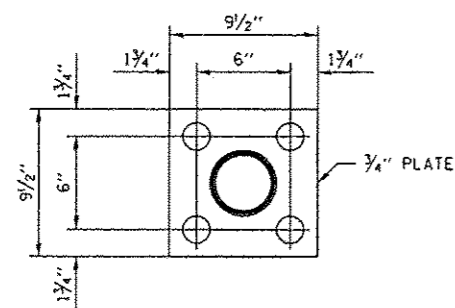
(WEST RAIL LOOKING EAST - EAST RAIL OPPOSITE)



ELEVATION END POST

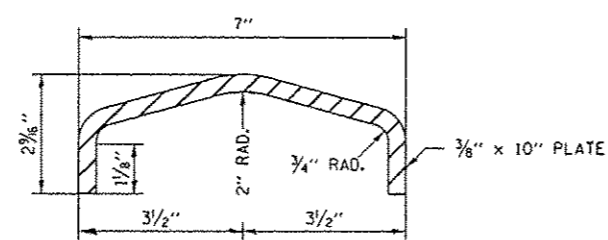
ELEVATION TYPICAL PANEL

SECTION A-A

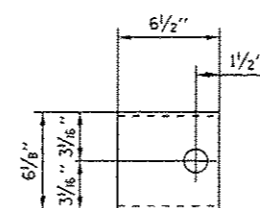
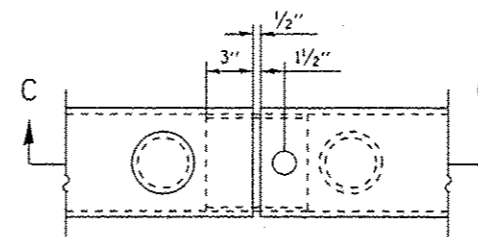


BASE PLATE

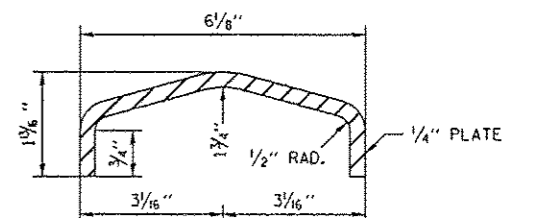
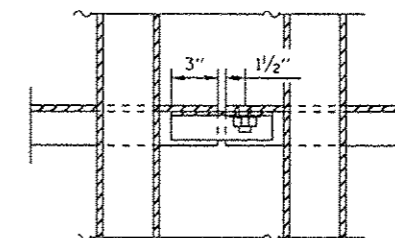
ALL POST - SUPERSTRUCTURE



DETAIL OF RAIL



(CONNECTING PLATE)



DETAIL OF CONNECTING PLATE

"FOR INFORMATION ONLY"

FILE NAME :	USER NAME : spurlockd	DESIGNED - DBS	REVISED -	STATE OF ILLINOIS DEPARTMENT OF TRANSPORTATION	STEEL RAILING		F.A.I. RTL.	SECTION	COUNTY	TOTAL SHEETS	SHEET NO.
c:\pwwork\spurlockd\0332621\0332621.dwg	66C87-sht-detail.dgn	DRAWN - DBS	REVISED -		FOR STRUCTURE NO. 006-0129	80	106-THBIBP	BUREAU	9	9	
Default	PLOT SCALE = 100.0000' / in.	CHECKED -	REVISED -		SCALE: NONE	SHEET 3	OF 3	SHEETS	STA.	TO STA.	CONTRACT NO. 66C87
	PLOT DATE = 3/26/2013	DATE - MAR 2013	REVISED -								ILLINOIS FED. AID PROJECT