

05-24-13 SPECIAL LETTING ITEM 024

STATE OF ILLINOIS
DEPARTMENT OF TRANSPORTATION
DIVISION OF HIGHWAYS

**PROPOSED
HIGHWAY PLANS**

F.A.S. ROUTE 2370 (IL 26)
SECTION (78-1HB-1)BP

**CLEANING AND PAINTING STRUCTURAL STEEL
STRUCTURE NO. 078-0010
PUTNAM COUNTY**

C-93-086-13

F.A.S. RTE.	SECTION	COUNTY	TOTAL SHEETS	SHEET NO.
2370	(78-1HB-1)BP	PUTNAM	9	1
		ILLINOIS	CONTRACT NO. 66C91	

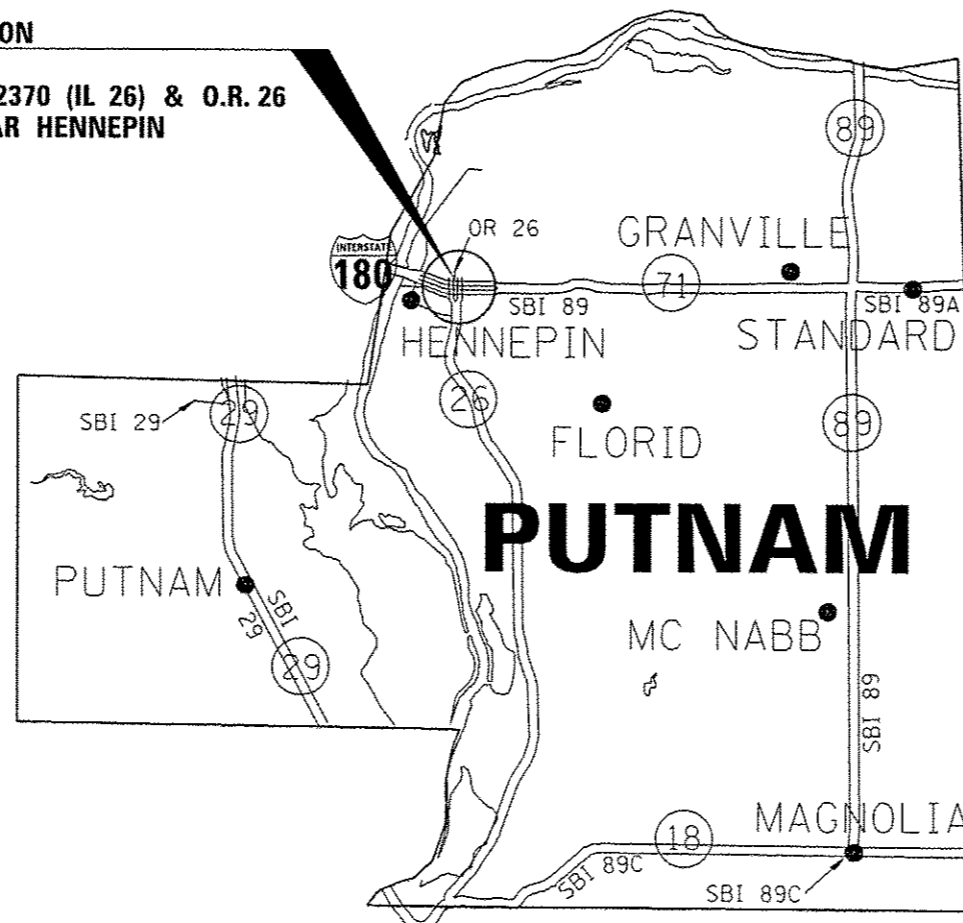
INDEX OF SHEETS

- 1 COVER SHEET
- 2 GENERAL NOTES
- 3 SUMMARY OF QUANTITIES
- 4 TYPICAL SECTIONS
- 5 TRAFFIC CONTROL AND PROTECTION STANDARD 701402 (SPECIAL)
- 6-8 EXISTING STRUCTURE PLANS

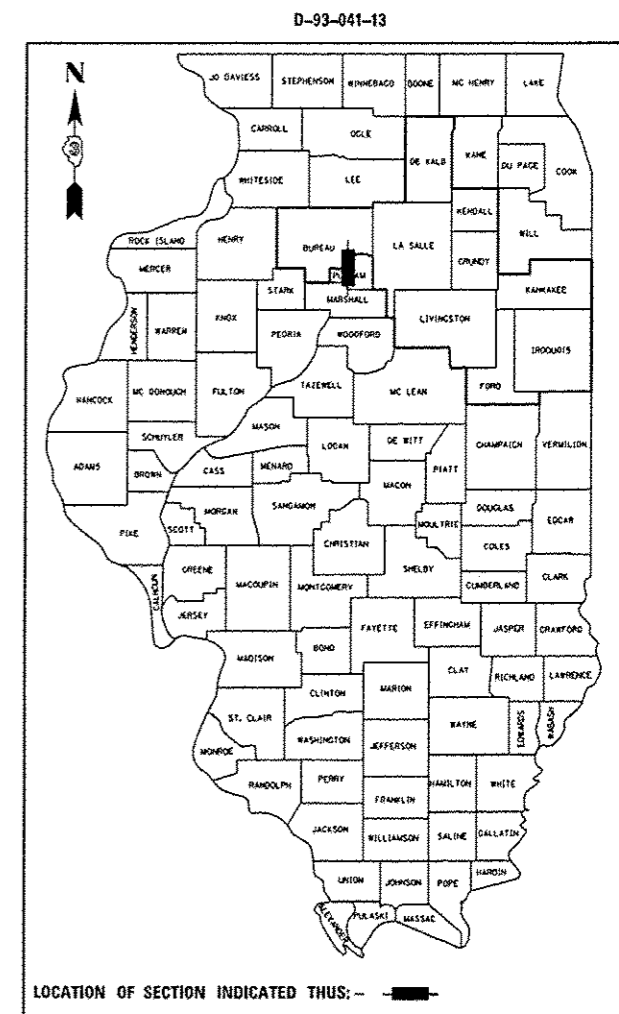
STANDARDS

- 000001-06 STANDARD SYMBOLS, ABBREVIATIONS AND PATTERNS
- 001006 DECIMAL OF AN INCH AND OF A FOOT
- 635011-2 REFLECTOR MARKER AND MOUNTING DETAILS
- 701101-03 OFF-ROAD OPERATIONS MULTILANE, 15' (4.5m) TO 24' (600m) FROM PAVEMENT EDGE
- 701106-02 OFF-ROAD OPERATIONS, MULTILANE, MORE THAN 15' (4.5m) AWAY
- 701400-06 APPROACH TO LANE CLOSURE, FREEWAY/EXPRESSWAY
- 701411-08 LANE CLOSURE, MULTILANE, AT ENTRANCE OR EXIT RAMP, FOR SPEEDS ≥ 45 MPH
- 701422-05 LANE CLOSURE, MULTILANE, FOR SPEEDS ≥ 45 MPH TO 55 MPH
- ~~701423-06 LANE CLOSURE, MULTILANE, WITH BARRIER, FOR SPEEDS ≥ 45 MPH TO 55 MPH~~
- 701426-05 LANE CLOSURE, MULTILANE INTERMITTENT OR MOVING OPERATION, FOR SPEEDS ≥ 45 MPH
- 701901-02 TRAFFIC CONTROL DEVICES
- 704001-07 TEMPORARY CONCRETE BARRIER
- 780001-03 TYPICAL PAVEMENT MARKINGS

PROJECT LOCATION
SN 078-0010
CARRYING FAS 2370 (IL 26) & O.R. 26
OVER I-180 NEAR HENNEPIN



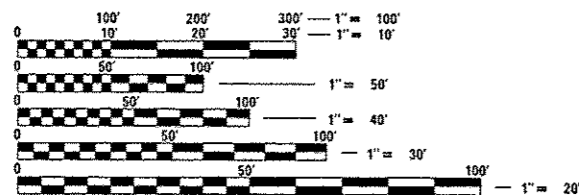
POINT LOCATION



LOCATION OF SECTION INDICATED THUS: - [arrow] -

FUNCTIONAL CLASSIFICATION

RURAL MAJOR COLLECTOR	RURAL INTERSTATE
FAS 2370 (IL 26)	FAI 180 (I-180)
2012 ADT = 1100	2011 ADT = 2650
P.V. = 91.82%	P.V. = 81.14%
M.U. = 2.73%	M.U. = 9.43%
S.U. = 5.45%	S.U. = 9.43%



FULL SIZE PLANS HAVE BEEN PREPARED USING STANDARD ENGINEERING SCALES. REDUCED SIZED PLANS WILL NOT CONFORM TO STANDARD SCALES. IN MAKING MEASUREMENTS ON REDUCED PLANS, THE ABOVE SCALES MAY BE USED.

J.U.L.I.E.
JOINT UTILITY LOCATION INFORMATION FOR EXCAVATION
1-800-892-0123
OR 811

DISTRICT 3 NO. (815) 434-6131
PROJECT ENGINEER: JOE KANNEL, P.E.
UNIT CHIEF: RON WOODSHANK
TOWNSHIP: HENNEPIN
CONTRACT NO. 66C91

STATE OF ILLINOIS
DEPARTMENT OF TRANSPORTATION
DIVISION OF HIGHWAYS

SUBMITTED 3/29/13
Paul A. Loebner
DEPUTY DIRECTOR OF HIGHWAYS, REGION ENGINEER

April 26, 2013
John D. Baranzelli, P.E.
ENGINEER OF DESIGN AND ENVIRONMENT

April 26, 2013
Omer Osman, P.E.
DIRECTOR OF HIGHWAYS, CHIEF ENGINEER

**PRINTED BY THE AUTHORITY
OF THE STATE OF ILLINOIS**

GENERAL NOTES

THE CONTRACTOR SHALL NOT CLOSE A LANE IN THE EASTBOUND AND WESTBOUND TRAFFIC LANES AT THE SAME TIME UNLESS APPROVED IN WRITING BY THE ENGINEER.

AS PER ARTICLE 107.20 OF THE STANDARD SPECIFICATIONS WHENEVER PUBLIC OR PRIVATE PROPERTY IS DAMAGE OR DESTROYED DUE TO THE OPERATIONS OF THE CONTRACTOR, THE CONTRACTOR SHALL, AT NO ADDITIONAL COST TO THE DEPARTMENT, RESTORE SUCH PROPERTY TO A CONDITION EQUAL TO THE EXISTING BEFORE SUCH DAMAGE OR INJURY WAS DONE BY REPAIRING, REBUILDING, OR REPLACING IT AS MAY BE DIRECTED, OR THE CONTRACTOR SHALL OTHERWISE MAKE GOOD SUCH DAMAGE OR DESTRUCTION IN AN ACCEPTABLE MANNER.

PLAN DIMENSIONS AND DETAILS RELATIVE TO EXISTING PLANS ARE SUBJECT TO ROUTINE VARIATIONS. THE CONTRACTOR SHALL FIELD VERIFY EXISTING DIMENSIONS AND DETAILS AFFECTING NEW CONSTRUCTION AND MAKE NECESSARY APPROVED ADJUSTMENT PRIOR TO CONSTRUCTION OR ORDERING OF MATERIALS. SUCH VARIATIONS SHALL NOT BE CAUSE FOR ADDITIONAL COMPENSATION FOR A CHANGE IN THE SCOPE OF THE WORK. HOWEVER, THE CONTRACTOR WILL BE PAID FOR THE QUANTITY FURNISHED BASED UPON THE UNIT BID FOR THE WORK.

FOR STABILIZATION, ALL TYPE III BARRICADES SHALL REQUIRE A MINIMUM OF FOUR SAND BAGS PER BARRICADE.

THE CONTRACTOR SHALL BE RESPONSIBLE FOR PROTECTING UTILITY PROPERTY FROM CONSTRUCTION OPERATIONS AS OUTLINED IN ARTICLE 107.31 OF THE STANDARD SPECIFICATIONS. THE "JULIE" NUMBER IS 1-800-892-0123. A MINIMUM OF FORTY-EIGHT (48) HOURS ADVANCE NOTICE IS REQUIRED.

WHERE SECTION OR SUBSECTION MONUMENTS ARE ENCOUNTERED, THE ENGINEER SHALL BE NOTIFIED BEFORE SUCH MONUMENTS ARE REMOVED. THE CONTRACTOR SHALL PROTECT AND CAREFULLY PRESERVE ALL MONUMENTS UNTIL AN AUTHORIZED SURVEYOR OR AGENT HAS WITNESSED OR OTHERWISE REFERENCED THEIR LOCATION. THE CONTRACTOR SHALL BE RESPONSIBLE FOR HAVING AN AUTHORIZED SURVEYOR REESTABLISH ANY SECTION OR SUBSECTION MONUMENTS DESTROYED BY HIS OPERATIONS.

ANY REFERENCE TO A STANDARD IN THESE PLANS SHALL BE INTERPRETED TO MEAN THE EDITION AS INDICATED BY THE SUBNUMBER LISTED ON THE INDEX OF SHEETS OR THE COPY OF THE STANDARD INCLUDED IN THESE PLANS.

THE CONTRACTOR SHALL BE REQUIRED TO SECURE WASTE CONTAINERS THAT REMAIN ON THE JOB SITE. THIS WILL ENTAIL THAT ALL WASTE CONTAINERS CAN NOT BE MOVED OR OPENED DURING NON-WORKING HOURS.

THE EXISTING STRUCTURAL STEEL CONTAINS LEAD. THE CONTRACTOR SHOULD TAKE APPROPRIATE PRECAUTIONS TO DEAL WITH THE PRESENCE OF LEAD PAINT ON THIS PROJECT.

IF THE CONTRACTOR/SUBCONTRACTOR LICENSED TO DISPOSE OF LEAD PAINT RESIDUE FAILS TO DISPOSE OF PAINT RESIDUES ON OR BEFORE THE SPECIFIED COMPLETION DATE, LIQUIDATED DAMAGES SHALL BE CHARGED PER CALENDAR DAY ACCORDING TO ARTICLE 108.09 OF THE STANDARD SPECIFICATIONS UNTIL SUCH TIME THAT THE PAINT RESIDUES HAVE BEEN PROPERLY DISPOSED OF.

THE SSPC-OP1 AND SSPC-OP2 PAINTING CONTRACTOR CERTIFICATIONS WILL BE REQUIRED FOR THIS PROJECT.

STRUCTURE NO. 078-0010

ALL EXISTING STEEL, INCLUDING BEAMS, DIAPHRAGMS, ANGLES, BEARINGS (AND ALL COMPONENTS) ETC. SHALL BE CLEANED PER NEAR WHITE BLAST CLEANING, SSPC-SPI0. ALL EXISTING STEEL SHALL BE PAINTED ACCORDING TO THE REQUIREMENTS OF PAINT SYSTEM 1 - OZ/EU. THE COLOR OF THE FINAL FINISH COAT FOR ALL INTERIOR STEEL SURFACES SHALL BE GREY, MUNSELL NO. 5B 7/1. THE COLOR OF THE FINAL FINISH COAT FOR THE EXTERIOR AND BOTTOM FLANGE OF FASICA BEAMS SHALL BE GREEN, MUNSELL NO. 7.5G 4/8.

THE CONTRACTOR SHALL FURNISH AND INSTALL A MINIMUM OF TWO (2) AIR MONITORS FOR THIS PROJECT TO MONITOR ABRASIVE BLASTING AT THIS SITE. SEE SPECIAL PROVISION FOR "CONTAINMENT AND DISPOSAL OF LEAD PAINT CLEANING RESIDUES".

COMMITMENTS

DISPOSAL OF EXCAVATED MATERIALS. ALL SUITABLE OR UNSUITABLE MATERIALS EXCAVATED DUE TO CONSTRUCTION OPERATIONS SHALL BE DISPOSED OF WITHIN THE LIMITS OF EXISTING RIGHT OF WAY. DISPOSAL OF EXCAVATED MATERIALS OFF THE RIGHT OF WAY SHALL NOT BE PERMITTED.

EXCAVATED MATERIALS SHALL BE DISPOSED OF AT LOCATIONS DIRECTED BY THE ENGINEER. ANY SUCH DISPOSAL SHALL NOT CREATE AND UNSIGHTLY OR OBJECTIONABLE APPEARANCE OR DETRACT FROM THE NATURAL TOPOGRAPHIC FEATURES WITHOUT WRITTEN PERMISSION FROM THE ENGINEER.

DATE: 3-29-13

PREPARED BY: Dan Bonin
DISTRICT STUDIES & PLANS ENGINEER

EXAMINED BY: Heidi Jones
DISTRICT CONSTRUCTION ENGINEER

Wayne A. Miller
DISTRICT MATERIALS ENGINEER

Bruce A. Harker
DISTRICT OPERATIONS ENGINEER

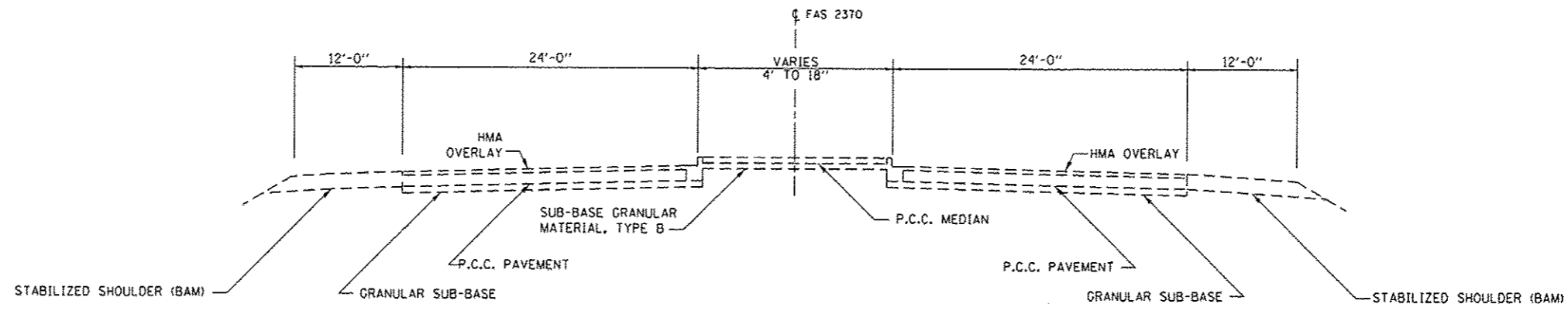
FILE NAME	USER NAME	DESIGNED	REVISED	STATE OF ILLINOIS DEPARTMENT OF TRANSPORTATION				GENERAL NOTES				F.A.S. RTE.	SECTION	COUNTY	TOTAL SHEETS	SHEET NO.								
c:\pwwork\pwwork\spurlock\d03359518\03	spurlockd	DBS	-									2370	(78-1HB-18P)	FUTNAM	8	2								
	0691-shr-details.dgn	DRAWN	DBS									REVISED	-											
	PLOT SCALE = 100.0000' / 1"	CHECKED	-									REVISED	-											
Default	PLOT DATE = 3/26/2013	DATE	MAR 2013									REVISED	-											
											SCALE: NONE	SHEET 1	OF 1	SHEETS	STA.	TO STA.	ILLINOIS FED. AID PROJECT							
															CONTRACT NO. 66C91									

CODE NO.	ITEM	UNIT	CONSTR. CODE
			STATE FUNDS
			100% STATE
			STRUCTURE
			0014
			RURAL
50606701	CLEANING AND PAINTING STRUCTURAL STEEL, LOCATION 1	L SUM	1
67100100	MOBILIZATION	L SUM	1
70100320	TRAFFIC CONTROL AND PROTECTION, STANDARD 701422	L SUM	1
70100325	TRAFFIC CONTROL AND PROTECTION, STANDARD 701423	EACH	1
70100420	TRAFFIC CONTROL AND PROTECTION, STANDARD 701411	EACH	2
70400100	TEMPORARY CONCRETE BARRIER	FOOT	350
70400200	RELOCATE CONCRETE BARRIER TEMPORARY	FOOT	1050
70600250	IMPACT ATTENUATORS, TEMPORARY (NON-REDIRECTIVE), TEST LEVEL 3	EACH	1
70600350	IMPACT ATTENUATORS, RELOCATE (NON-REDIRECTIVE), TEST LEVEL 3	EACH	3
* 78009006	MODIFIED URETHANE PAVEMENT MARKING - LINE 6"	FOOT	860
78300100	PAVEMENT MARKING REMOVAL	SQ FT	430
X5067501	BRIDGE CLEANING AND PAINTING WARRANTY NUMBER 1	L SUM	1
X7010208	TRAFFIC CONTROL AND PROTECTION, STANDARD 701402 (SPECIAL)	EACH	1
Z0007101	CONTAINMENT AND DISPOSAL OF LEAD PAINT CLEANING RESIDUES NO. 1	L SUM	1

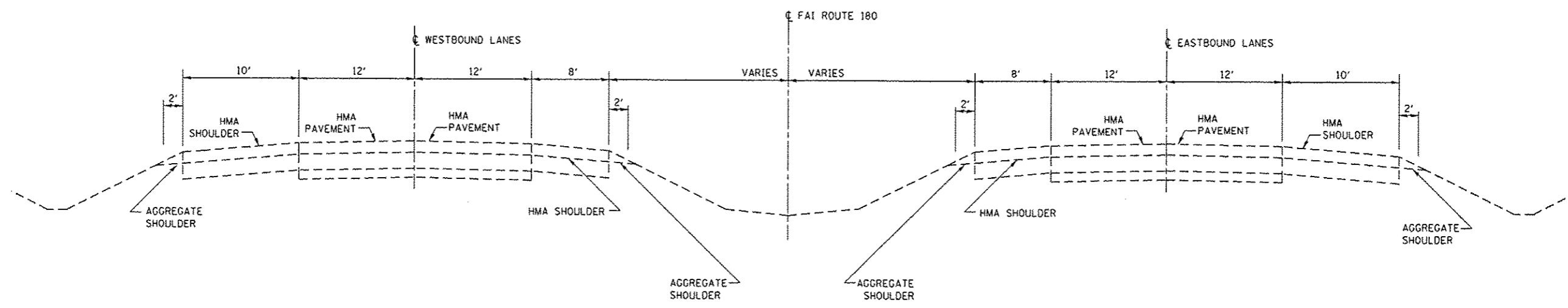
* SPECIALITY ITEMS

FILE NAME *	USER NAME * spurlockd	DESIGNED - DBS	REVISED -	STATE OF ILLINOIS DEPARTMENT OF TRANSPORTATION	SUMMARY OF QUANTITIES		F.A.S. RTE.	SECTION	COUNTY	TOTAL SHEETS	SHEET NO.
c:\pwr\work\pwr\dtd\spurlockd\0335518\0366C91-shs-details.dgn	PLLOT SCALE = 1/8"=1'-0" @ 1/4" = 1'	DRAWN - OBS	REVISED -				2370	(78-1HB-1)BP	PUTNAM	8	3
Default	PLLOT DATE = 3/29/2013	CHECKED -	REVISED -		SCALE: NONE	SHEET 1 OF 1 SHEETS	STA.	TO STA.		CONTRACT NO. 66C91	
		DATE - MAR 2013	REVISED -					ILLINOIS FED. AID PROJECT			

Rev.

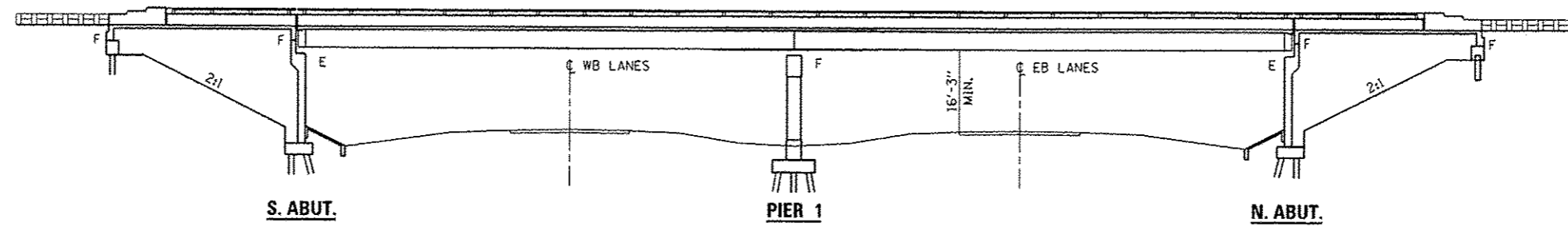


TYPICAL SECTION
FAS 2370 (IL 26)

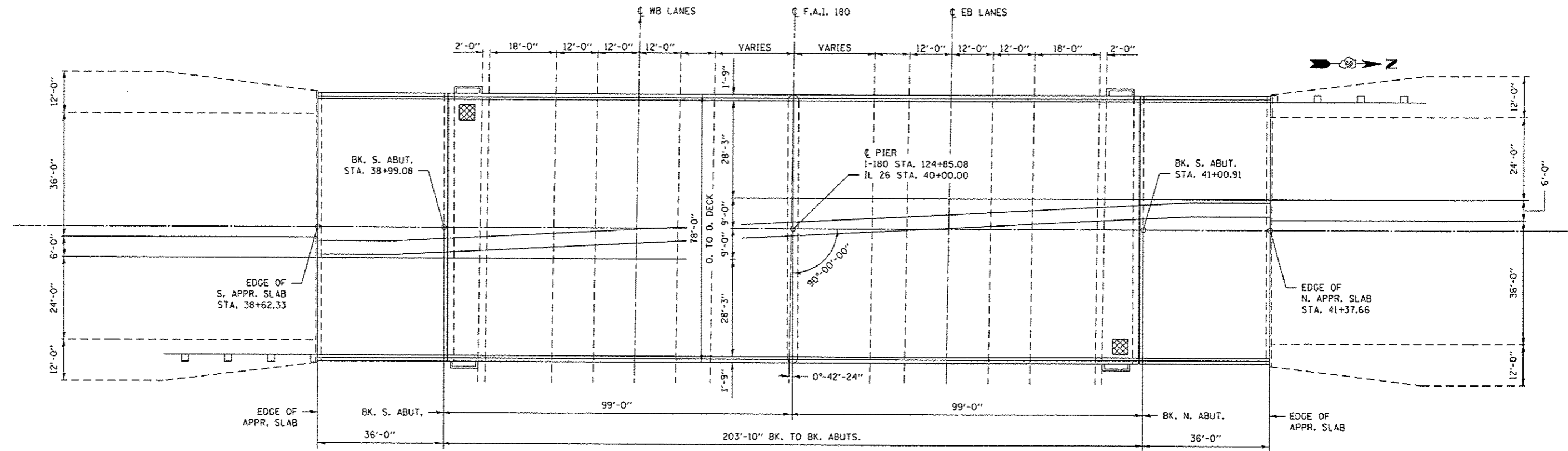


TYPICAL SECTION
FAI 180 (I-180)

FILE NAME *	USER NAME = spurlockd	DESIGNED - DBS	REVISED -	STATE OF ILLINOIS DEPARTMENT OF TRANSPORTATION	TYPICAL SECTIONS			F.A.S. RTE.	SECTION	COUNTY	TOTAL SHEETS	SHEET NO.
c:\pwwork\pwwork\spurlockd\0335518\036691-sht-details.dgn	DRAWN - DBS	REVISED -	2370					178-1HB-11BP	PLITNAM	9	4	
PLOT SCALE = 100.0000' / in.	CHECKED -	REVISED -	CONTRACT NO. 66C91									
Default	PLOT DATE = 3/26/2013	DATE - MAR 2013	REVISED -		SCALE: NONE	SHEET 1 OF 1 SHEETS	STA. TO STA.	ILLINOIS FED. AID PROJECT				

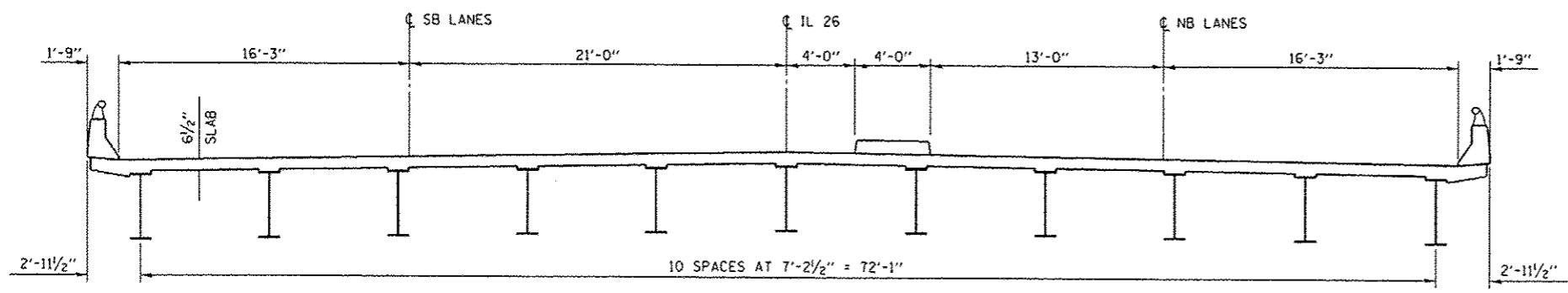


ELEVATION



PLAN

AIR MONITORS



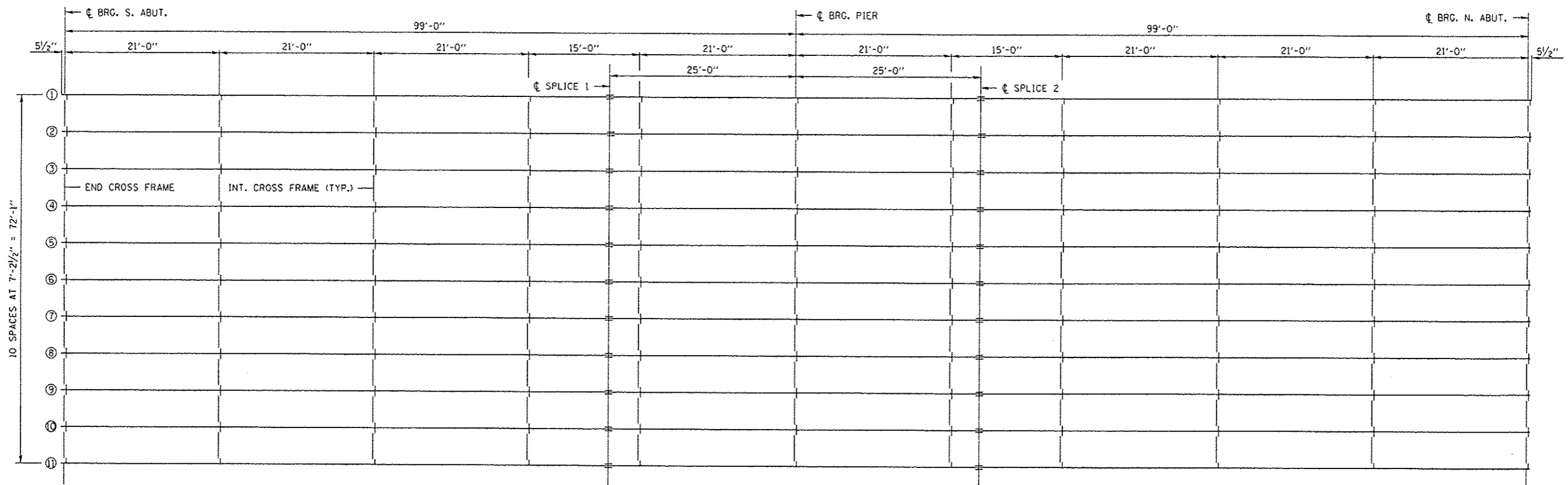
CROSS SECTION

TOTAL BILL OF MATERIAL

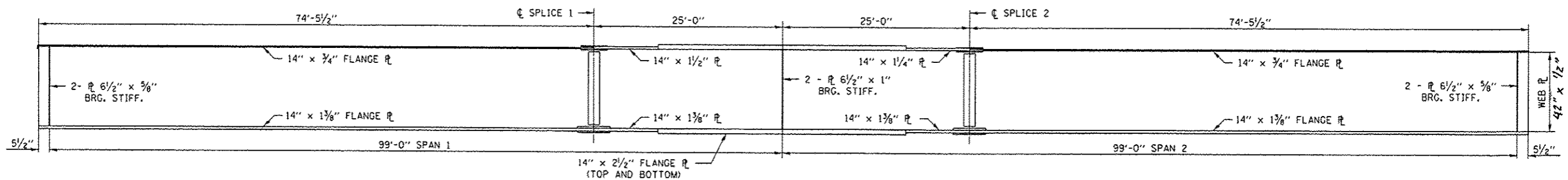
ITEM	UNIT	SUPER	SUB	TOTAL
CLEANING AND PAINTING STRUCTURAL STEEL, LOCATION 1	L SUM	1		1
CONTAINMENT AND DISPOSAL OF LEAD PAINT CLEANING RESIDUES NO. 1	L SUM	1		1
BRIDGE CLEANING AND PAINTING WARRANTY NUMBER 1	L SUM	1		1

"FOR INFORMATION ONLY"

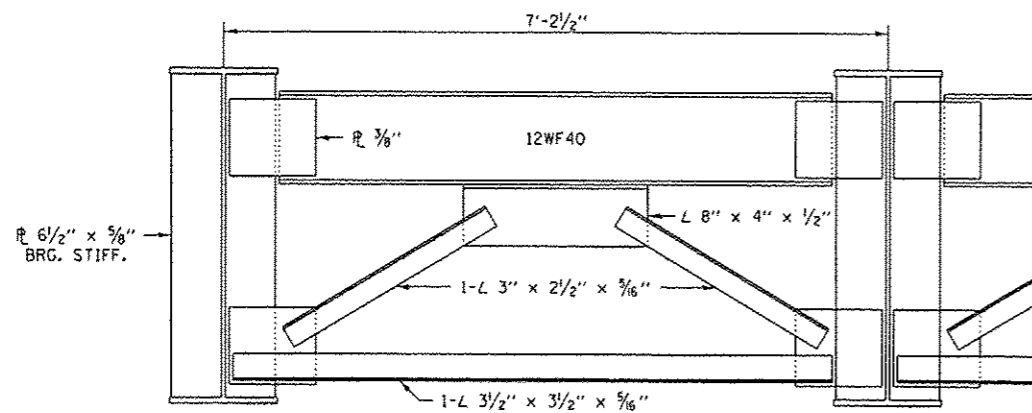
FILE NAME : c:\p\work\p\ridot\p\lockd\0033518\03	USER NAME : spurlockd	DESIGNED - DBS	REVISED -	STATE OF ILLINOIS DEPARTMENT OF TRANSPORTATION	GENERAL PLAN FOR SN. 078-0010		F.A.S. RTE. 2370	SECTION (78-1HB-1)BP	COUNTY PUTNAM	TOTAL SHEETS 8	SHEET NO. 6
Default	PLOT SCALE : 100.0000 % / in.	DRAWN - DBS	REVISED -		SCALE: NONE	SHEET 1	OF 3 SHEETS	STA.	TO STA.	CONTRACT NO. 66C91	
	PLOT DATE : 3/26/2013	CHECKED -	REVISED -							ILLINOIS FED. AID PROJECT	
		DATE - MAR 2013	REVISED -								



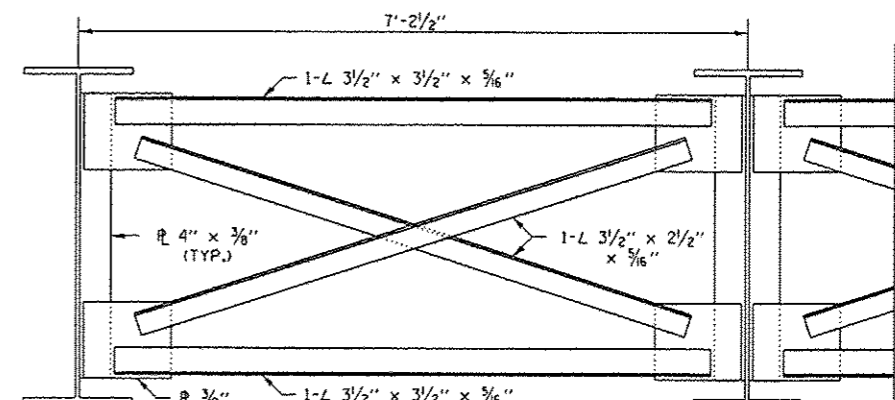
FRAMING PLAN



GIRDER ELEVATION



END CROSS FRAME



INTERIOR CROSS FRAME

"FOR INFORMATION ONLY"

FILE NAME =	USER NAME = spurlockd	DESIGNED - DBS	REVISED -
c:\pwwork\spurlockd\spurlockd\0335518\0366C91-shs-details.dgn		DRAWN - DBS	REVISED -
		CHECKED -	REVISED -
Defaults	PLOT DATE = 3/26/2013	DATE - MAR 2013	REVISED -

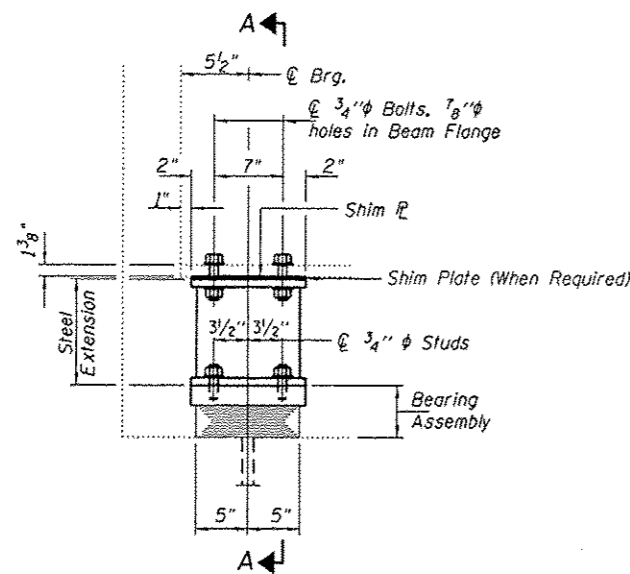
STATE OF ILLINOIS
DEPARTMENT OF TRANSPORTATION

STRUCTURAL STEEL DETAILS
FOR SN. 078-0010

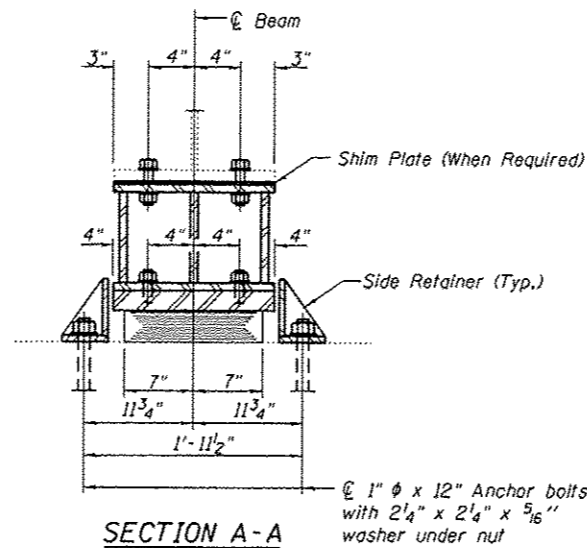
F.A.S. RTE. 2370	SECTION (78-1HB-1HB)	COUNTY PUTNAM	TOTAL SHEETS 8	SHEET NO. 7
CONTRACT NO. 66C91				

SCALE: NONE SHEET 2 OF 3 SHEETS STA. TO STA.

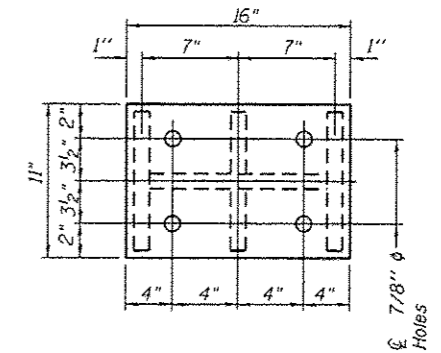
ILLINOIS FED. AID PROJECT



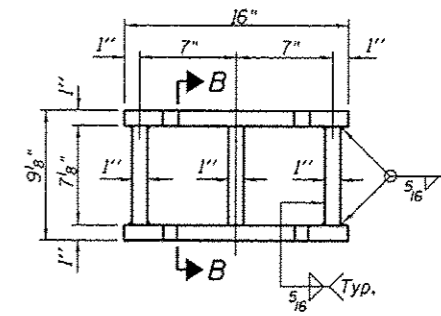
ELEVATION AT ABUTMENT



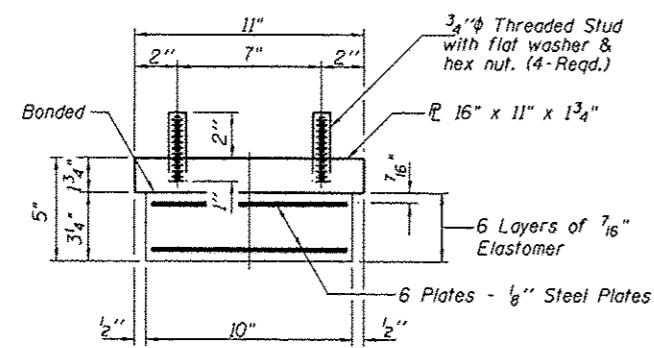
SECTION A-A



PLAN TOP AND BOTTOM PLATE

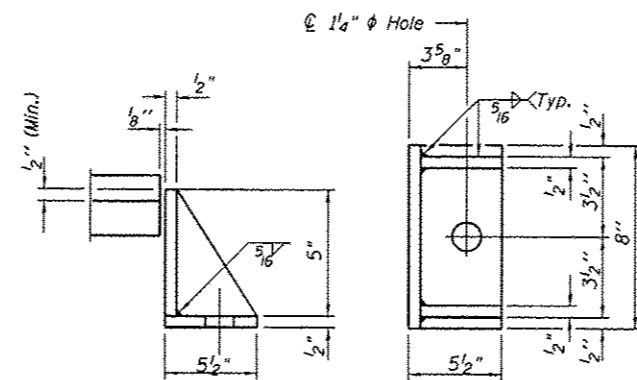


STEEL EXTENSION DETAIL

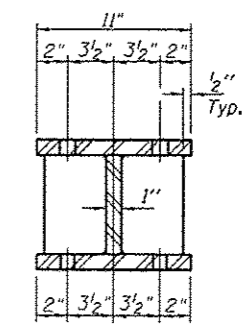


BEARING ASSEMBLY

Note:
Shim plates shall not be placed under Bearing Assembly.



SIDE RETAINER



SECTION B-B

"FOR INFORMATION ONLY"

FILE NAME =	USER NAME = spurlockd	DESIGNED - OBS	REVISED -	STATE OF ILLINOIS DEPARTMENT OF TRANSPORTATION	STRUCTURAL STEEL DETAILS FOR SN. 078-0010		F.A.S. RTEL	SECTION	COUNTY	TOTAL SHEETS	SHEET NO.	
c:\pwwork\spurlockd\spurlockd\0335518\0335518-1\st-1\st-1.dgn	66C91-st-1-details.dgn	DRAWN - OBS	REVISED -		SCALE: NONE	SHEET 3 OF 3 SHEETS	STA. TO STA.	2370	(78-1MB-118P)	PUTNAM	8	8
Default	PLOT SCALE = 100.0000' / 1"	CHECKED -	REVISED -						CONTRACT NO. 66C91			
	PLOT DATE = 3/26/2013	DATE - MAR 2013	REVISED -						[ILLINOIS] FED. AID PROJECT			