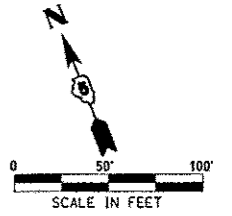


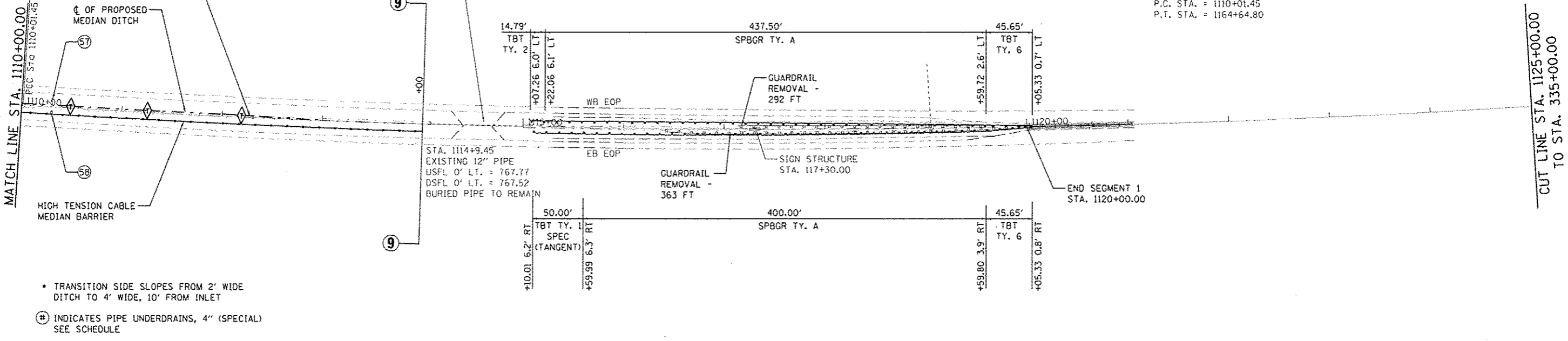
SEC. 2, T19N, R8E, 3RD P.M.

STA. 1119+04.93
 EXISTING CATCH BASIN
 EXISTING 24" RCP
 USFL 0' LT. = 762.92
 DSFL 64' LT. = 762.39

EXIST. CURVE C48
 PI STA. = 1137+79.11
 $\Delta = 25^\circ 29' 45''$ (LT)
 D = 0° 28' 00"
 R = 12,277.57'
 T = 2,777.66'
 L = 5,463.35'
 E = 310.29'
 P.C. STA. = 1110+01.45
 P.T. STA. = 1164+64.80



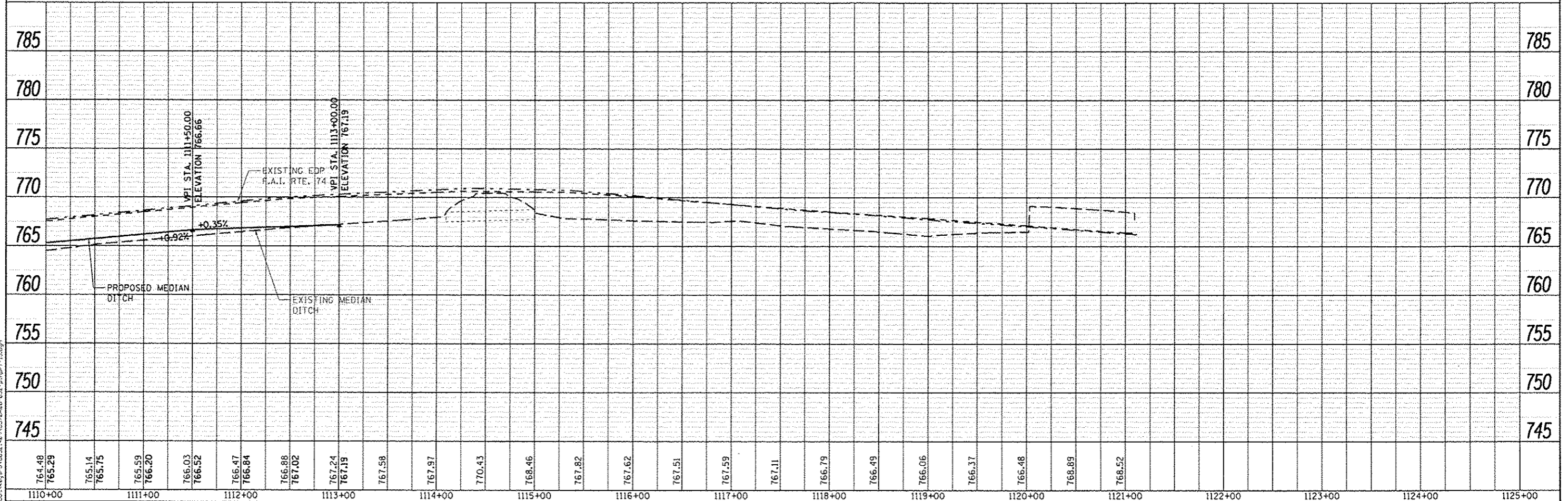
PROPOSED DITCH CENTERLINE
 TRANSITIONS FROM
 2' LT AT STA 1112+00.00 TO
 0' OFFSET AT STA 1113+00.00



- TRANSITION SIDE SLOPES FROM 2' WIDE DITCH TO 4' WIDE, 10' FROM INLET
- ⊕ INDICATES PIPE UNDERDRAINS, 4" (SPECIAL) SEE SCHEDULE

PLAN	DATE
BY	
CHECKED	
DATE	

PROFILE	DATE
BY	
CHECKED	
DATE	



764.48	765.29	765.14	765.75	765.59	766.20	766.03	766.52	766.47	766.84	766.88	767.02	767.24	767.19	767.58	767.97	770.43	768.46	767.82	767.62	767.51	767.59	767.11	766.79	766.49	766.06	766.37	766.48	768.89	768.52
1110+00	1111+00	1112+00	1113+00	1114+00	1115+00	1116+00	1117+00	1118+00	1119+00	1120+00	1121+00	1122+00	1123+00	1124+00	1125+00														

McDonough-Whitlow, P.C.
 Consulting Engineers & Land Surveyors
 PROFESSIONAL DESIGN NO. 184-00754

USER NAME = kevsrb
 PLOT SCALE = 1/8" = 10'
 PLOT DATE = 4/9/2013

DESIGNED - JAH
 DRAWN - RNH
 CHECKED - TMM
 DATE -

STATE OF ILLINOIS
 DEPARTMENT OF TRANSPORTATION

PLAN & PROFILE
 F.A.I. 74
 SCALE: 1" = 50' SHEET 15 OF 22 SHEETS STA. 1110+00.00 TO STA.

F.A.I. RTE.	SECTION	COUNTY	TOTAL SHEETS	SHEET NO.
74	MEDIAN CABLE 2013-1	CHAMPAIGN	119	32
CONTRACT NO. 70A00				

ILLINOIS FED. AID PROJECT