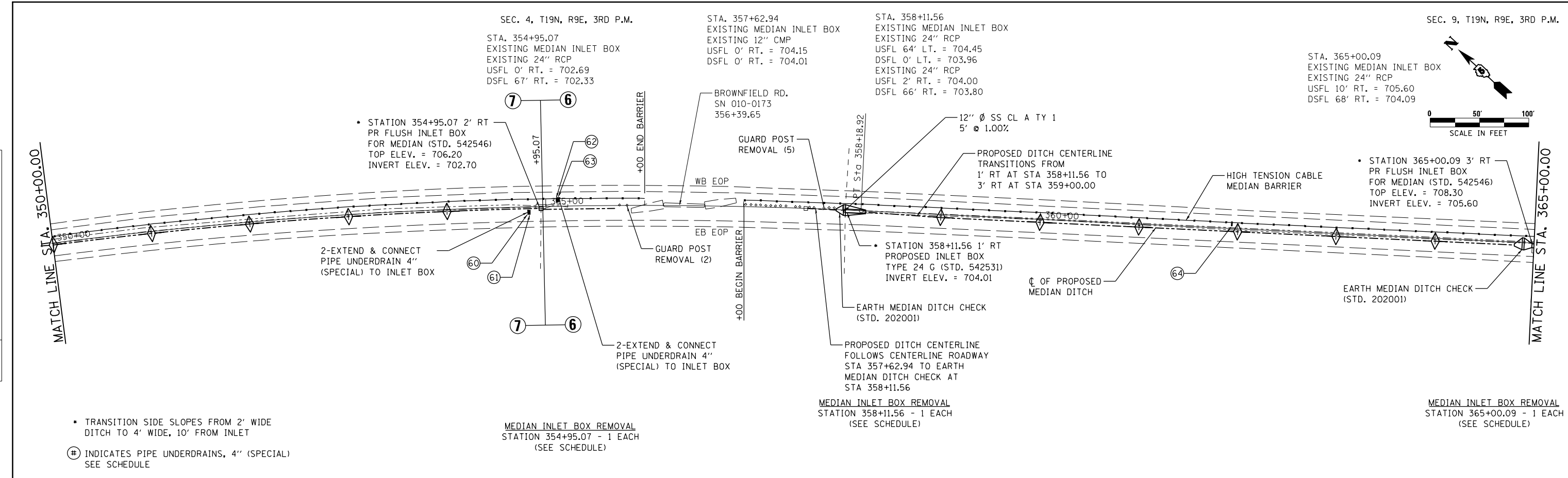


PLAN	SUBMITTED	DATE
	PLOTTED	
	ALIGNED	
	CHECKED	
	FILED	
NOTE BOOK NO.		

PROFILE	SUBMITTED	DATE
	PLOTTED	
	GRADES CHECKED	
	STRUCTURE NOTATIONS CHECKED	
NOTE BOOK NO.		

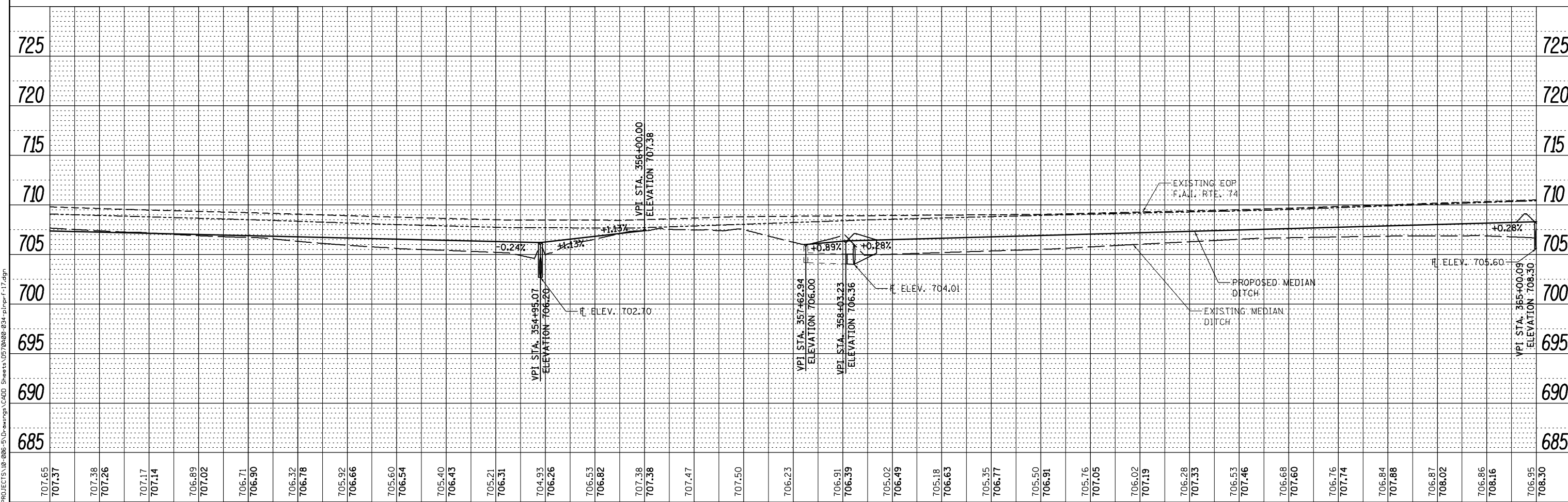


- TRANSITION SIDE SLOPES FROM 2' WIDE DITCH TO 4' WIDE, 10' FROM INLET
- ⊕ INDICATES PIPE UNDERDRAINS, 4" (SPECIAL) SEE SCHEDULE

MEDIAN INLET BOX REMOVAL
STATION 354+95.07 - 1 EACH
(SEE SCHEDULE)

MEDIAN INLET BOX REMOVAL
STATION 358+11.56 - 1 EACH
(SEE SCHEDULE)

MEDIAN INLET BOX REMOVAL
STATION 365+00.09 - 1 EACH
(SEE SCHEDULE)



707.65	707.37	707.38	707.26	707.17	707.14	706.89	707.02	706.71	706.90	706.32	706.78	705.92	706.66	705.60	706.54	705.40	706.43	705.21	706.31	704.93	706.26	706.53	706.82	707.38	707.38	707.47	707.50	706.23	706.91	706.39	705.02	706.49	705.18	706.63	705.35	706.77	705.50	706.91	705.76	707.05	706.02	707.19	706.28	707.35	706.53	707.46	706.68	707.60	706.76	707.74	706.84	707.88	706.87	708.02	706.86	708.16	706.95	708.30
350+00	351+00	352+00	353+00	354+00	355+00	356+00	357+00	358+00	359+00	360+00	361+00	362+00	363+00	364+00	365+00																																											

McDonough-Whitlow, P.C.
Consulting Engineers & Land Surveyors
PROFESSIONAL DESIGN NO. 184-002754

USER NAME = Richard Heinke
DESIGNED - JAH
DRAWN - RNH
CHECKED - TMM
DATE -
PLOT SCALE = 100.0000' / 1"
PLOT DATE = 3/7/2013

REVISIED -
REVISIED -
REVISIED -
REVISIED -

STATE OF ILLINOIS
DEPARTMENT OF TRANSPORTATION

PLAN & PROFILE
F.A.I. 74
SCALE: 1" = 50'
SHEET 17 OF 22 SHEETS
STA. 350+00.00 TO STA. 365+00.00

F.A.I. RTE.	SECTION	COUNTY	TOTAL SHEETS	SHEET NO.
74	MEDIAN CABLE 2013-1	CHAMPAIGN	119	34

CONTRACT NO. 70A00
ILLINOIS FED. AID PROJECT

F:\Projects\UDOT PROJECTS\10-086-5\Drawings\CADD Sheets\0370480-034-plr\F-17.dgn