

STATION EQUATIONS:

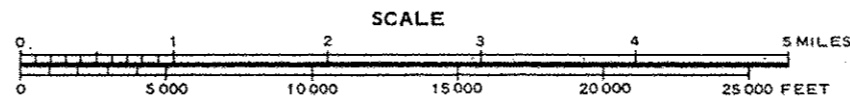
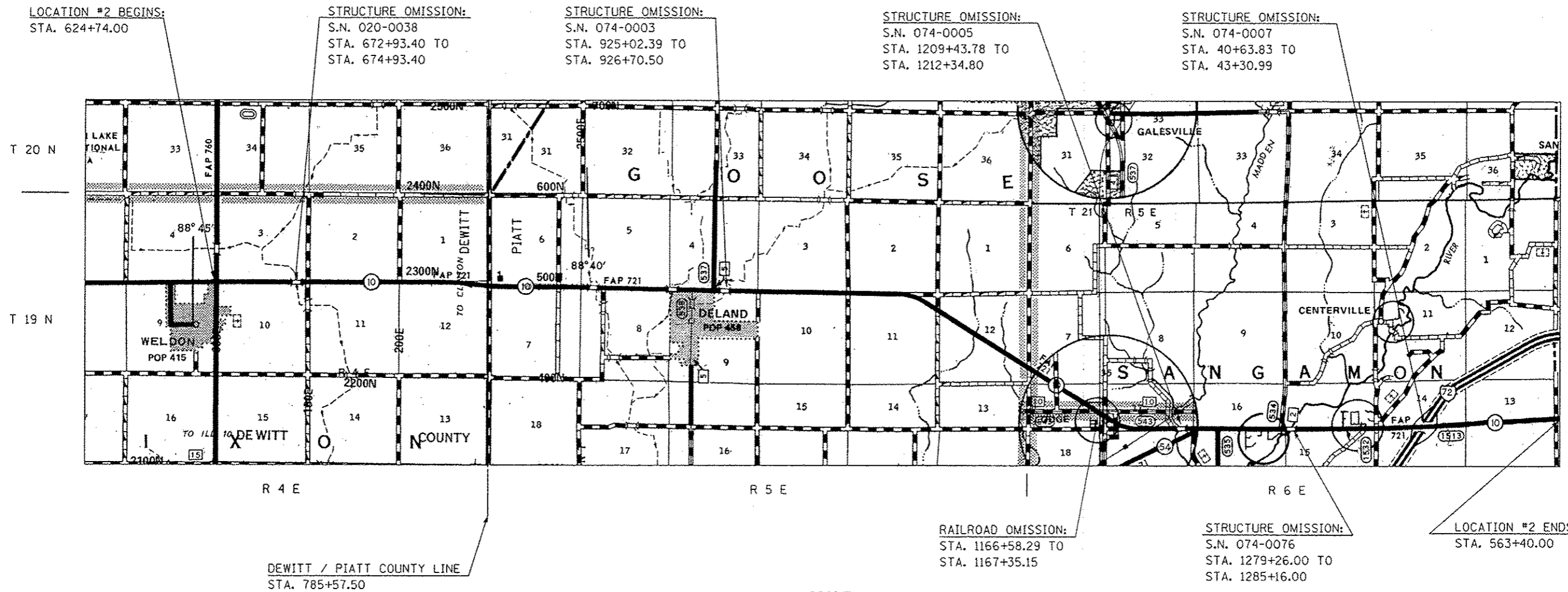
STA. 652+12.00 (BK) =	STA. 758+79.00 (BK) =
STA. 652+09.00 (AH)	STA. 758+84.00 (AH)
STA. 665+43.50 (BK) =	STA. 825+83.00 (BK) =
STA. 665+48.00 (AH)	STA. 825+88.00 (AH)
STA. 678+62.00 (BK) =	STA. 840+94.70 (BK) =
STA. 678+63.00 (AH)	STA. 841+02.94 (AH)
STA. 719+01.00 (BK) =	STA. 878+94.00 (BK) =
STA. 719+18.00 (AH)	STA. 879+01.00 (AH)
STA. 732+21.00 (BK) =	STA. 883+90.80 (BK) =
STA. 732+23.00 (AH)	STA. 884+00.33 (AH)
STA. 745+56.50 (BK) =	STA. 915+83.60 (BK) =
STA. 745+60.00 (AH)	STA. 915+84.09 (AH)

LOCATION MAP #2

**F.A.P. ROUTE 721 / F.A.S. 1513 (IL. 10)
FROM WELDON TO CHAMPAIGN / PIATT CO. LINE
PIATT & DEWITT COUNTY / RURAL 2 LANE**

STATION EQUATIONS:

STA. 944+90.50 (BK) =	STA. 1142+55.50 (BK) =
STA. 944+92.30 (AH)	STA. 1142+49.00 (AH)
STA. 984+96.00 (BK) =	STA. 1199+97.00 (BK) =
STA. 985+00.00 (AH)	STA. 1199+97.53 (AH)
STA. 1024+75.00 (BK) =	STA. 1273+75.50 (BK) =
STA. 1024+77.00 (AH)	STA. 1273+78.50 (AH)
STA. 1053+90.50 (BK) =	STA. 1312+04.50 (BK) =
STA. 1053+85.00 (AH)	STA. 1312+04.00 (AH)
STA. 1085+00.00 (BK) =	STA. 1330+19.00 (BK) =
STA. 1085+02.50 (AH)	STA. 1330+22.00 (AH)
STA. 1116+22.50 (BK) =	STA. 1340+47.00 (BK) =
STA. 1116+24.00 (AH)	STA. 23+00.00 (AH)
	STA. 60+00.00 (BK) =
	STA. 624+43.75 (AH)



NOTE:
STATIONS DECREASE FROM WEST TO EAST
STARTING AT STA. 624+43.75

GROSS LENGTH OF LOCATION #2 = 81,310.66 FT = 15.400 MILES
NET LENGTH OF LOCATION #2 = 79,717.51 FT = 15.098 MILES

• SHOULDER REPAIR FY2013-1
•• DEWITT, MCLEAN & PIATT

FILE NAME: c:\pwwork\pwwide\cearlock\j\d9336878\070a23-wit-Location Maps.dgn	USER NAME: cealock_jd	DESIGNED: -	REVISED: -	STATE OF ILLINOIS DEPARTMENT OF TRANSPORTATION	LOCATION MAP #2 F.A.P. ROUTE 721 / F.A.S. 1513 (IL. 10)		F.A. RTE.:	SECTION:	COUNTY:	TOTAL SHEETS:	SHEET NO.:	
PLOT SCALE: 40.0000' / in.	PLOT DATE: 3/20/2013	DRAWN: -	REVISED: -		SCALE:	SHEET 1 OF 1 SHEETS	STA. TO STA.	VAR.:		**	17	4
		CHECKED: -	REVISED: -									
		DATE: -	REVISED: -								CONTRACT NO. 70A23	
[ILLINOIS] FED. AID PROJECT												