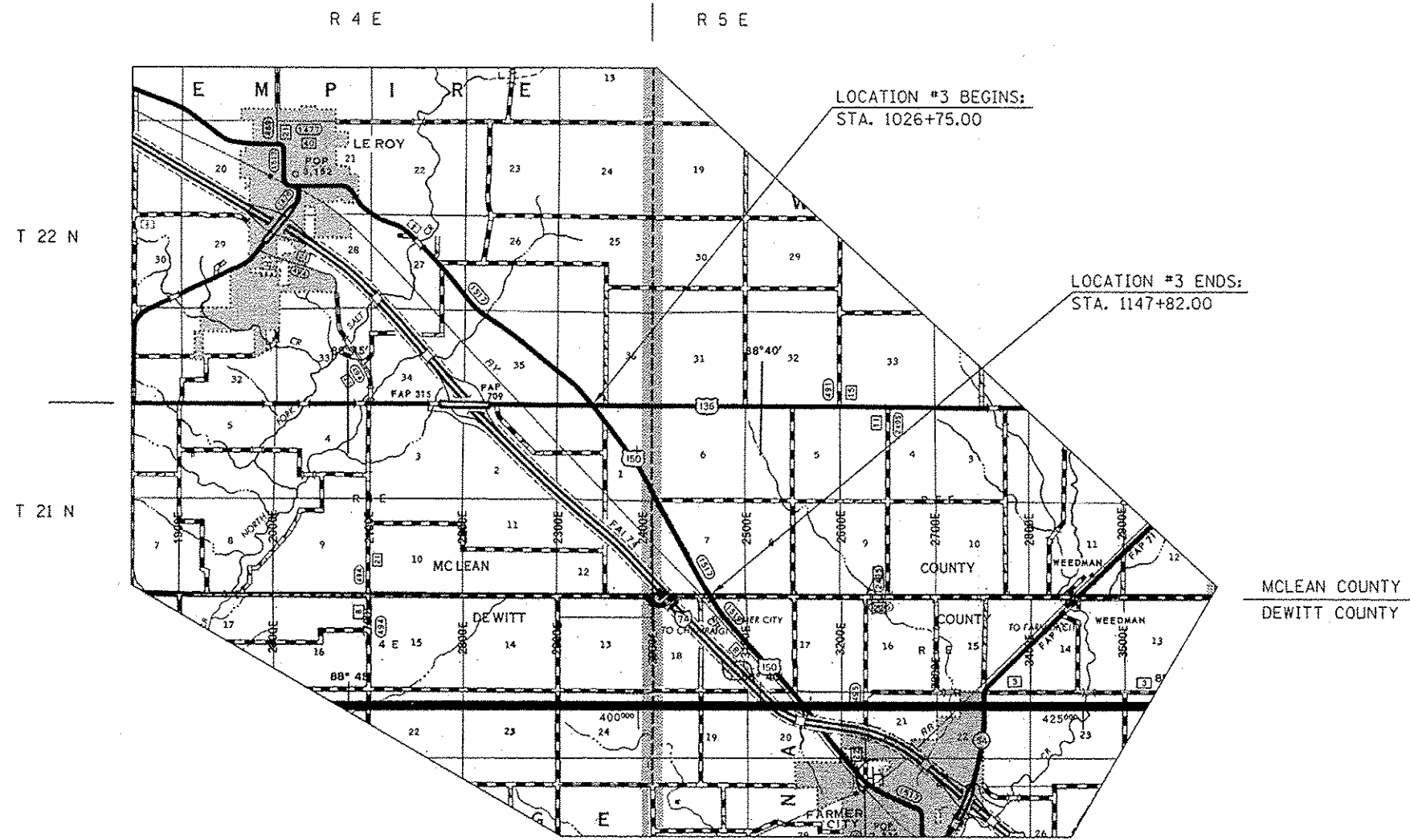


LOCATION MAP #3
F.A.S. ROUTE 1517 (U.S. 150)
FROM U.S. 136 TO DEWITT CO. LINE
MCLEAN COUNTY / RURAL 2 LANE



TOWNSHIP:
EMPIRE

GROSS LENGTH OF LOCATION #3 = 12,107.00 FT = 2.293 MILES
NET LENGTH OF LOCATION #3 = 12,107.00 FT = 2.293 MILES

• SHOULDER REPAIR FY2013-1
 ** DEWITT, MCLEAN & PIATT

FILE NAME :	USER NAME : userlockjd	DESIGNED -	REVISED -	STATE OF ILLINOIS	LOCATION MAP #3	F.A.S. RTE.	SECTION	COUNTY	TOTAL SHEETS	SHEET NO.
cr:\pwork\psidat\userlockjd\0336878\070a23-shi-Location Maps.dgn	70a23-shi-Location Maps.dgn	DRAWN -	REVISED -	DEPARTMENT OF TRANSPORTATION	F.A.S. ROUTE 1517 (U.S. 150)	1517	.	..	17	5
#MODELNAME#	PLOT DATE : 3/20/2013	CHECKED -	REVISED -		SCALE:	SHEET 1	OF 1	SHEETS	STA.	TO STA.
		DATE -	REVISED -							
ILLINOIS FED. AID PROJECT CONTRACT NO. 70A23										