

STATE OF ILLINOIS
 DEPARTMENT OF TRANSPORTATION
 DIVISION OF HIGHWAYS
**PROPOSED
 HIGHWAY PLANS**

F.A. RTE.	SECTION	COUNTY	TOTAL SHEETS	SHEET NO.
VAR.		**	17	1
ILLINOIS			CONTRACT NO. 70A23	

• SHOULDER REPAIR FY2013-1
 • DEWITT, MCLEAN & PIATT

D-95-009-13

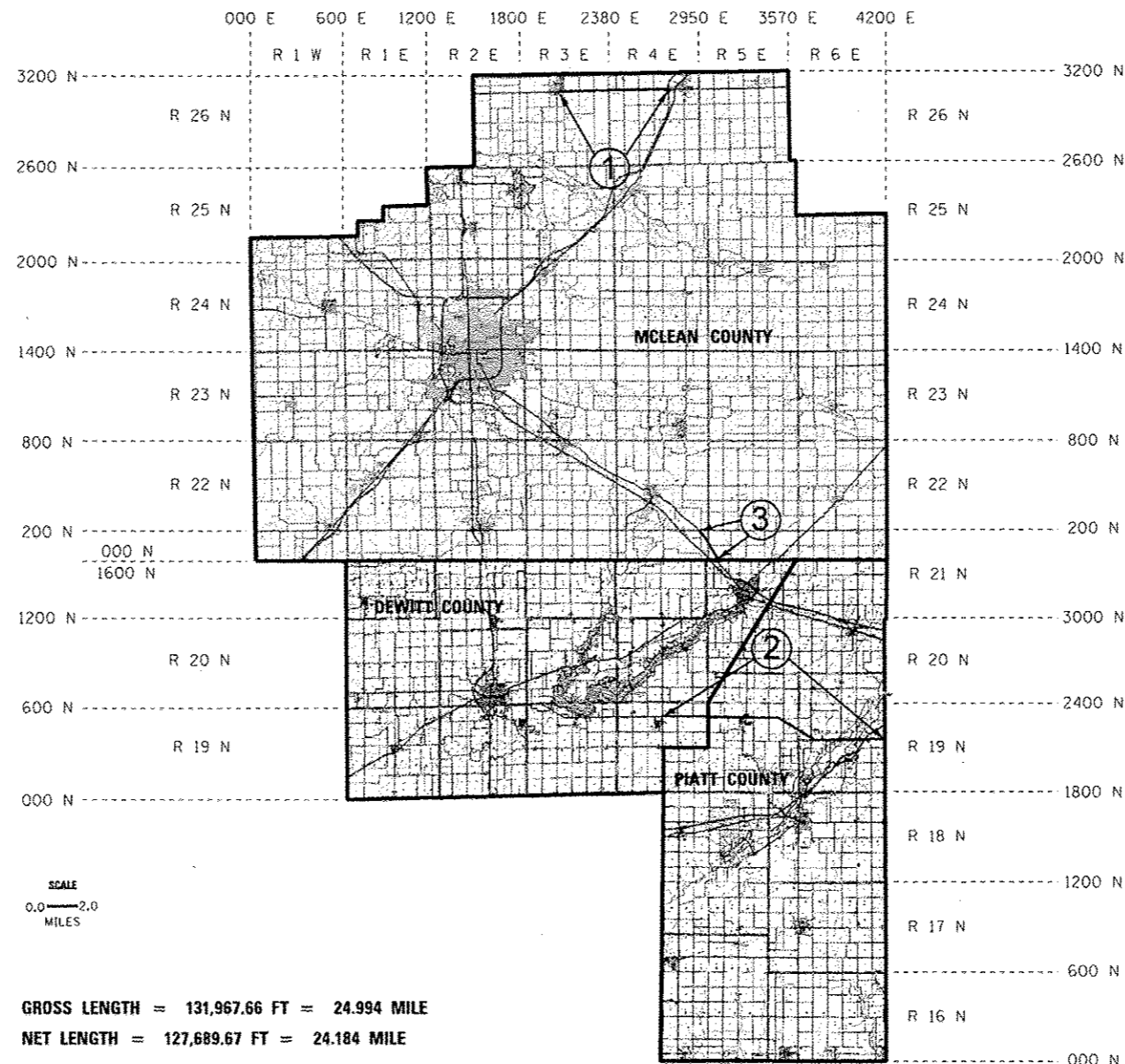


LOCATION OF SECTION INDICATED THUS: —■—

VARIOUS ROUTES
 SECTION SHOULDER REPAIR FY2013-1
**WEST FIELD AREA – AGGREGATE SHOULDER REPAIR
 DEWITT, MCLEAN & PIATT COUNTIES**

C-95-009-13

SEE PAGES 3-5 FOR LOCATION MAPS, GROSS & NET LENGTHS OF PROJECT BY LOCATION



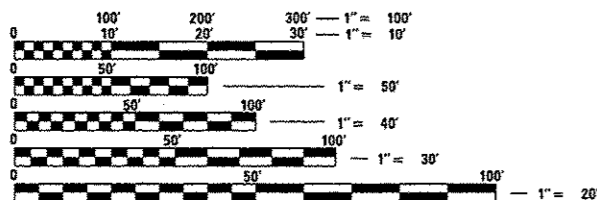
SCALE
 0.0 — 2.0
 MILES

GROSS LENGTH = 131,967.66 FT = 24.994 MILE
 NET LENGTH = 127,689.67 FT = 24.184 MILE

FOR INDEX OF SHEETS, SEE SHEET NO. 2
 FOR SUMMARY OF QUANTITIES, SEE SHEET NO. 6

CURRENT TRAFFIC DATA

- LOCATION #1: F.A.P. RTE. 317 / (U.S. 24)
 FROM W. OF MCLEAN ST. IN GRIDLEY TO W. OF I-55
 AVERAGE ADT = 3,050
- LOCATION #2: F.A.P. RTE. 721 / F.A.S. 1513 / (IL. 10)
 FROM WELDON TO CHAMPAIGN / PIATT COUNTY LINE
 AVERAGE ADT = 1,850
- LOCATION #3: F.A.S. RTE. 1517 / (U.S. 150)
 FROM U.S. 136 TO DEWITT COUNTY LINE
 AVERAGE ADT = 1,000



FULL SIZE PLANS HAVE BEEN PREPARED USING STANDARD ENGINEERING SCALES. REDUCED SIZED PLANS WILL NOT CONFORM TO STANDARD SCALES. IN MAKING MEASUREMENTS ON REDUCED PLANS, THE ABOVE SCALES MAY BE USED.

J.U.L.I.E.
 JOINT UTILITY LOCATION INFORMATION FOR EXCAVATION
 1-800-892-0123
 OR 811

PROJECT ENGINEER : JASON STULTS
 PHONE NUMBER: (217)-465-4181

CONTRACT NO. 70A23

STATE OF ILLINOIS
 DEPARTMENT OF TRANSPORTATION
 DIVISION OF HIGHWAYS

SUBMITTED *MARCH 18* 20 *13*
Joseph S. Cowie
 DEPUTY DIRECTOR OF HIGHWAYS, REGION ENGINEER *CHS*

April 26 20 *13*
John D. Baranzelli P.E./br
 ENGINEER OF DESIGN AND ENVIRONMENT

April 26 20 *13*
Chris Osborn P.E./br
 DIRECTOR OF HIGHWAYS, CHIEF ENGINEER

PRINTED BY THE AUTHORITY
 OF THE STATE OF ILLINOIS

INDEX OF SHEETS

SHEET NO.	DESCRIPTION
1	COVER SHEET
2	INDEX OF SHEETS
2	HIGHWAY STANDARDS
2	GENERAL NOTES
3-5	LOCATION MAPS
6	SUMMARY OF QUANTITIES
7-14	TYPICAL CROSS SECTIONS
15-16	SCHEDULE OF QUANTITIES
17	DETAIL OF AGGREGATE SHOULDER

GENERAL NOTES

G.N.-100
ENGLISH UNITS OF MEASUREMENT SHALL GOVERN OVER AND SUPERSEDE ANY METRIC UNITS SHOWN IN THIS CONTRACT. WHERE INCLUDED, METRIC UNITS ARE FOR INFORMATION ONLY.

G.N.-100A
ELECTRONIC FILES AND/OR ELECTRONIC SURVEY INFORMATION INCLUDING CADD FILES WILL NOT BE AVAILABLE TO THE CONTRACTOR.

G.N.-107.12A
RAILROAD PROTECTIVE LIABILITY INSURANCE IS NOT INCLUDED IN THIS CONTRACT. ALL AGGREGATE SHOULDER OPERATIONS SHALL STOP AT THE RAILROAD RIGHT-OF-WAY LINE UNLESS THE RAILROAD RIGHT-OF-WAY LINE IS LESS THAN 25.0 FEET FROM THE RAILROAD TRACKS, THEN THE AGGREGATE SHOULDER OPERATIONS SHALL STOP 25.0 FEET FROM THE RAILROAD TRACKS. THE RAILROAD RIGHT-OF-WAY SHALL BE DETERMINED IN THE FIELD BY THE RESIDENT ENGINEER.

NO COMMITMENTS

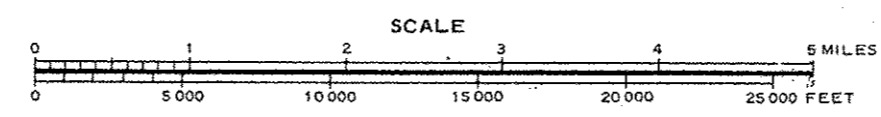
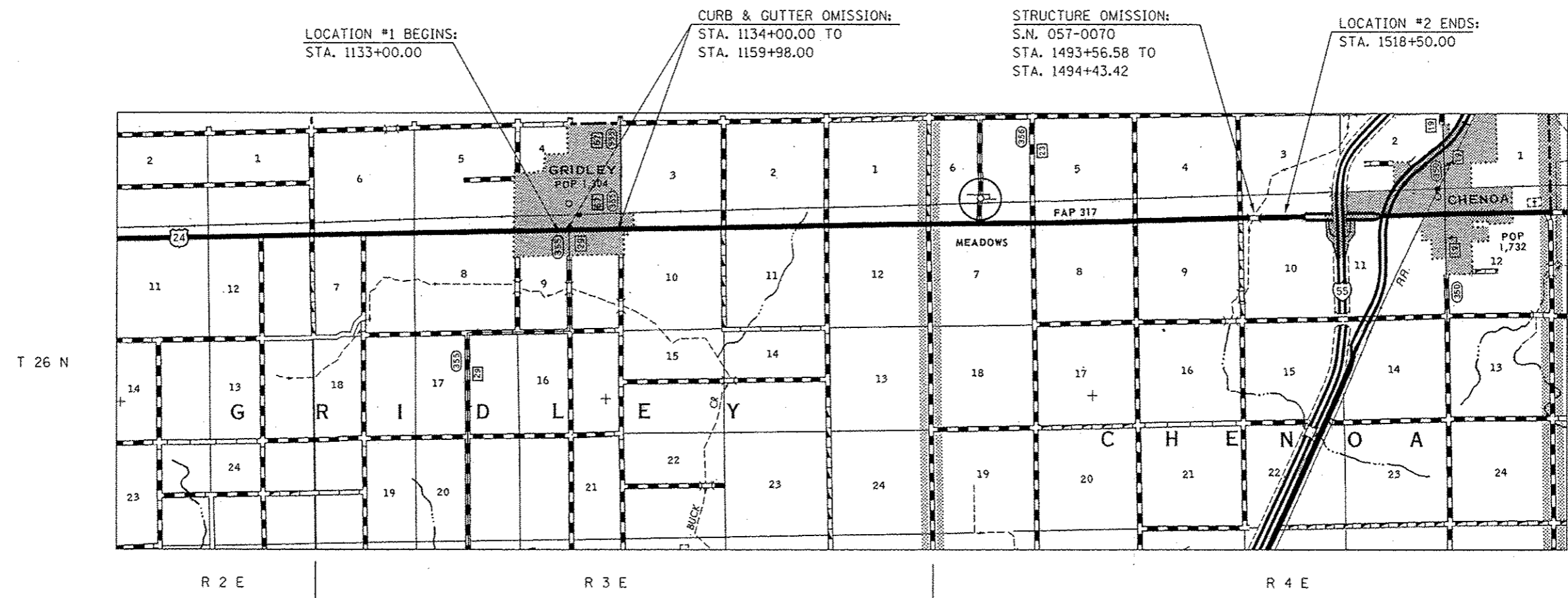
HIGHWAY STANDARDS

STANDARD NUMBER	NAME OF STANDARD
000001-06	STANDARD SYMBOLS, ABBREVIATIONS AND PATTERNS
001006	DECIMAL OF AN INCH AND OF A FOOT
701006-04	OFF-ROAD OPERATIONS, 2L, 2W, 15' (4.5 M) TO 24" (600 MM) FROM PAVEMENT EDGE
701011-03	OFF-ROAD MOVING OPERATIONS, 2L, 2W, DAY ONLY
701301-04	LANE CLOSURE, 2L, 2W, SHORT TIME OPERATIONS
701306-03	LANE CLOSURE, 2L, 2W, SLOW MOVING OPERATIONS DAY ONLY, FOR SPEEDS \geq 45 MPH
701901-02	TRAFFIC CONTROL DEVICES

• SHOULDER REPAIR FY2013-1
•• DEWITT, MCLEAN & PIATT

FILE NAME *	USER NAME : ceerlock_jd	DESIGNED -	REVISED -	STATE OF ILLINOIS DEPARTMENT OF TRANSPORTATION	INDEX OF SHEETS, HIGHWAY STANDARDS & GENERAL NOTES	F.A. RTE.	SECTION	COUNTY	TOTAL SHEETS	SHEET NO.
c:\pwork\pwork\ceerlock_jd\0336876\0	70A23 - pht-Gennote.dgn	DRAWN -	REVISED -			VAR.	*	**	17	2
MODELNAME*	PLT SCALE * 48.0000 * / in.	CHECKED -	REVISED -			CONTRACT NO. 70A23				
	PLT DATE * 3/20/2013	DATE -	REVISED -			ILLINOIS FED. AID PROJECT				
					SCALE:	SHEET 1 OF 1 SHEETS		STA.	TO STA.	

LOCATION MAP #1
F.A.P. ROUTE 317 (U.S. 24)
FROM W. OF MCLEAN ST. IN GRIDLEY TO W. OF I-55
MCLEAN COUNTY / RURAL 2 LANE



TOWNSHIP:
GRIDLEY & CHENOA



GROSS LENGTH OF LOCATION #1 = 38,550.00 FT = 7.301 MILES
NET LENGTH OF LOCATION #1 = 35,865.16 FT = 6.793 MILES

• SHOULDER REPAIR FY2013-1
 ** DEWITT, MCLEAN & PIATT

FILE NAME :	USER NAME : ceerlockjd	DESIGNED -	REVISED -	STATE OF ILLINOIS DEPARTMENT OF TRANSPORTATION	LOCATION MAP #1 F.A.P. ROUTE 317 (U.S. 24)	F.A. RTE.	SECTION	COUNTY	TOTAL SHEETS	SHEET NO.
ci:\pwork\pwork\ceerlockjd\0330078\0378023\shc-Location Maps.dgn	78023\shc-Location Maps.dgn	DRAWN -	REVISED -							
#MODELNAME#	PLOT SCALE : 40.0000" / 1"	CHECKED -	REVISED -							
	PLOT DATE : 3/20/2013	DATE -	REVISED -			SCALE:	SHEET 1 OF 1 SHEETS	STA.	TO STA.	CONTRACT NO. 70A23
ILLINOIS FED. AID PROJECT										

STATION EQUATIONS:

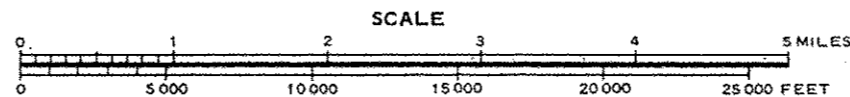
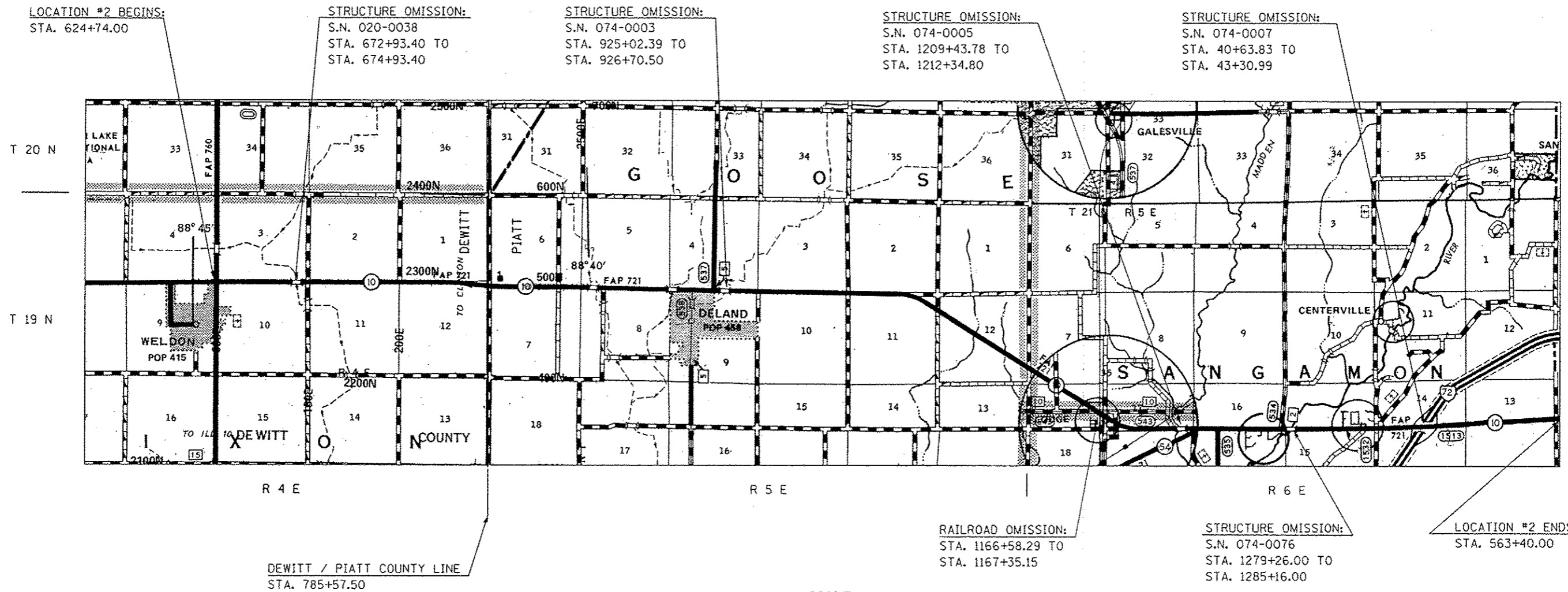
STA. 652+12.00 (BK) =	STA. 758+79.00 (BK) =
STA. 652+09.00 (AH)	STA. 758+84.00 (AH)
STA. 665+43.50 (BK) =	STA. 825+83.00 (BK) =
STA. 665+48.00 (AH)	STA. 825+88.00 (AH)
STA. 678+62.00 (BK) =	STA. 840+94.70 (BK) =
STA. 678+63.00 (AH)	STA. 841+02.94 (AH)
STA. 719+01.00 (BK) =	STA. 878+94.00 (BK) =
STA. 719+18.00 (AH)	STA. 879+01.00 (AH)
STA. 732+21.00 (BK) =	STA. 883+90.80 (BK) =
STA. 732+23.00 (AH)	STA. 884+00.33 (AH)
STA. 745+56.50 (BK) =	STA. 915+83.60 (BK) =
STA. 745+60.00 (AH)	STA. 915+84.09 (AH)

LOCATION MAP #2

**F.A.P. ROUTE 721 / F.A.S. 1513 (IL. 10)
FROM WELDON TO CHAMPAIGN / PIATT CO. LINE
PIATT & DEWITT COUNTY / RURAL 2 LANE**

STATION EQUATIONS:

STA. 944+90.50 (BK) =	STA. 1142+55.50 (BK) =
STA. 944+92.30 (AH)	STA. 1142+49.00 (AH)
STA. 984+96.00 (BK) =	STA. 1199+97.00 (BK) =
STA. 985+00.00 (AH)	STA. 1199+97.53 (AH)
STA. 1024+75.00 (BK) =	STA. 1273+75.50 (BK) =
STA. 1024+77.00 (AH)	STA. 1273+78.50 (AH)
STA. 1053+90.50 (BK) =	STA. 1312+04.50 (BK) =
STA. 1053+85.00 (AH)	STA. 1312+04.00 (AH)
STA. 1085+00.00 (BK) =	STA. 1330+19.00 (BK) =
STA. 1085+02.50 (AH)	STA. 1330+22.00 (AH)
STA. 1116+22.50 (BK) =	STA. 1340+47.00 (BK) =
STA. 1116+24.00 (AH)	STA. 23+00.00 (AH)
	STA. 60+00.00 (BK) =
	STA. 624+43.75 (AH)



NOTE:
STATIONS DECREASE FROM WEST TO EAST
STARTING AT STA. 624+43.75

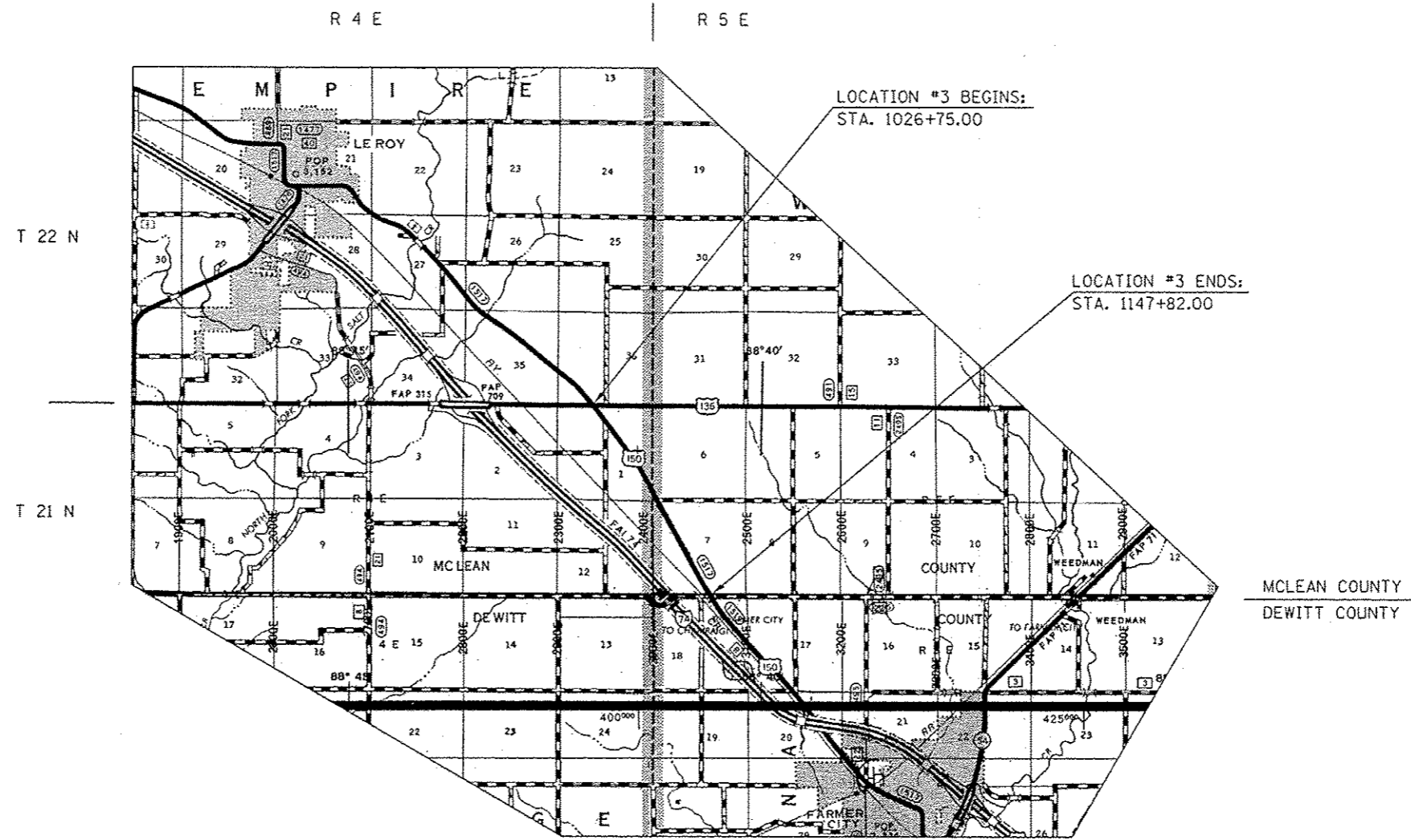
GROSS LENGTH OF LOCATION #2 = 81,310.66 FT = 15.400 MILES
NET LENGTH OF LOCATION #2 = 79,717.51 FT = 15.098 MILES

TOWNSHIP:
SAGAMON, GOOSE & NIXON

• SHOULDER REPAIR FY2013-1
•• DEWITT, MCLEAN & PIATT

FILE NAME: c:\pwwork\pwwide\cearlock\j\d9336878\070a23-wit-Location Maps.dgn	USER NAME: cealock_jd	DESIGNED: -	REVISED: -	STATE OF ILLINOIS DEPARTMENT OF TRANSPORTATION	LOCATION MAP #2 F.A.P. ROUTE 721 / F.A.S. 1513 (IL. 10)		F.A. RTE.:	SECTION:	COUNTY:	TOTAL SHEETS:	SHEET NO.:	
PLOT SCALE: 40.0000' / in.	PLOT DATE: 3/20/2013	DRAWN: -	REVISED: -		SCALE:	SHEET 1 OF 1 SHEETS	STA. TO STA.	VAR.:		**	17	4
		CHECKED: -	REVISED: -									
		DATE: -	REVISED: -								CONTRACT NO. 70A23	
[ILLINOIS] FED. AID PROJECT												

LOCATION MAP #3
F.A.S. ROUTE 1517 (U.S. 150)
FROM U.S. 136 TO DEWITT CO. LINE
MCLEAN COUNTY / RURAL 2 LANE



TOWNSHIP:
EMPIRE



GROSS LENGTH OF LOCATION #3 = 12,107.00 FT = 2.293 MILES
NET LENGTH OF LOCATION #3 = 12,107.00 FT = 2.293 MILES

• SHOULDER REPAIR FY2013-1
 ** DEWITT, MCLEAN & PIATT

FILE NAME :	USER NAME : userlockjd	DESIGNED -	REVISED -	STATE OF ILLINOIS	LOCATION MAP #3	F.A.S. RTE.:	SECTION	COUNTY	TOTAL SHEETS	SHEET NO.
cr:\pwork\psidat\userlockjd\0336878\070a23-shi-Location Maps.dgn	70a23-shi-Location Maps.dgn	DRAWN -	REVISED -	DEPARTMENT OF TRANSPORTATION	F.A.S. ROUTE 1517 (U.S. 150)	1517	.	..	17	5
#MODELNAME#	PLOT DATE : 3/20/2013	CHECKED -	REVISED -		SCALE:	SHEET 1	OF 1	SHEETS	STA.	TO STA.
		DATE -	REVISED -							
ILLINOIS FED. AID PROJECT										

SUMMARY OF QUANTITIES

LOCATION OF WORK:	VARIOUS	VARIOUS	VARIOUS
	ROUTES	ROUTES	ROUTES
	RURAL	RURAL	RURAL
COUNTY:	DEWITT	MCLEAN	PIATT
FUNDING BREAKOUT:	100% STATE	100% STATE	100% STATE
	CONTRACT MAINT	CONTRACT MAINT	CONTRACT MAINT
CONSTRUCTION TYPE CODE:	0021	0021	0021

CODE NO	ITEM	UNIT	TOTAL QUANTITY	QUANTITY	QUANTITY	QUANTITY
48101200	AGGREGATE SHOULDERS, TYPE B	TON	6,386.0	733.0	2,744.0	2,909.0
67100100	MOBILIZATION	L SUM	1.0	0.1	0.4	0.5
70100460	TRAFFIC CONTROL AND PROTECTION, STANDARD 701306	L SUM	1.0	0.1	0.4	0.5

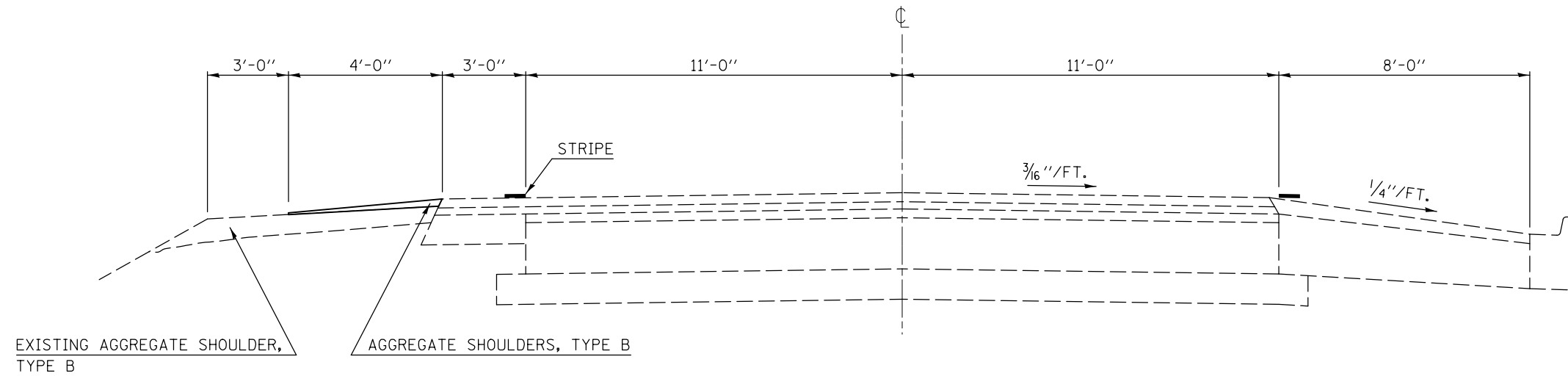
• SHOULDER REPAIR FY2013-1
 ** DEWITT, MCLEAN & PIATT

FILE NAME :	USER NAME : ceer-lockjd	DESIGNED -	REVISED -	STATE OF ILLINOIS DEPARTMENT OF TRANSPORTATION	SUMMARY OF QUANTITIES	F.A. RTE.	SECTION	COUNTY	TOTAL SHEETS	SHEET NO.
cs:\pwork\pwork\ceer-lockjd\0336878\057ea23-shl-500.dgn		DRAWN -	REVISED -			VAR.	-	**	17	6
#MODELNAME#	PLOT SCALE : 40.0000' / in	CHECKED -	REVISED -		SCALE:				CONTRACT NO. 70A23	
	PLOT DATE : 3/28/2013	DATE -	REVISED -		SHEET 1 OF 1 SHEETS	STA.	TO STA.	ILLINOIS FED. AID PROJECT		

LOCATION #1 TYPICAL SECTION ①

F.A.P. ROUTE 317 (U.S. 24)

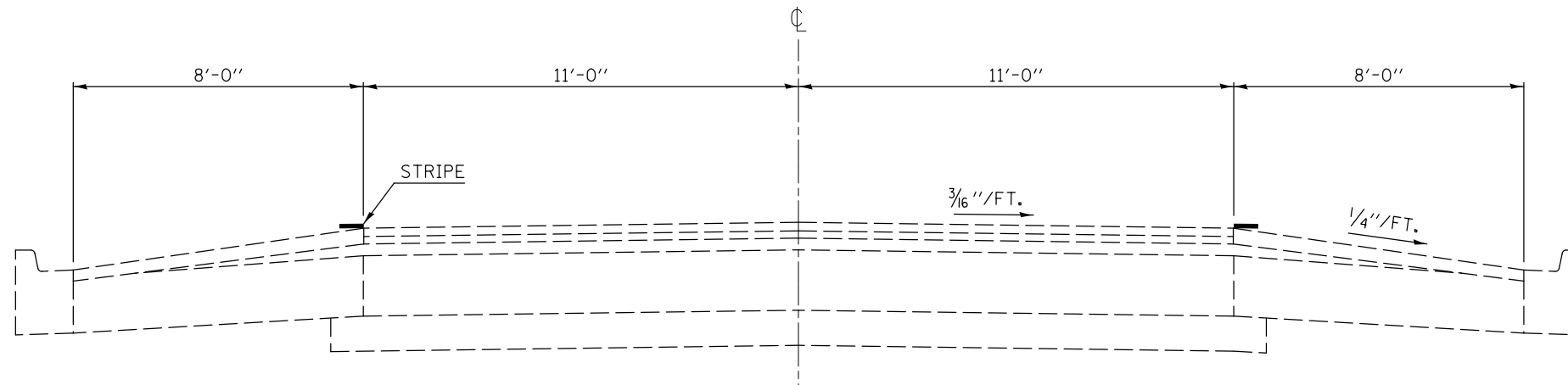
STATION TO STATION
1133+00.00 1134+00.00 ②



LOCATION #1 TYPICAL SECTION ②

F.A.P. ROUTE 317 (U.S. 24)

STATION TO STATION
① 1134+00.00 1159+98.00 ③



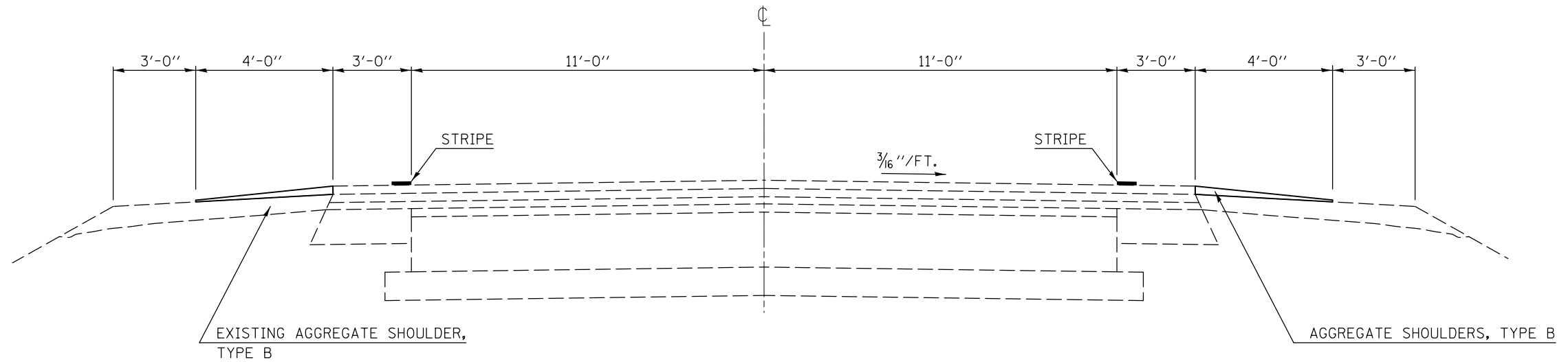
• SHOULDER REPAIR FY2013-1
•• DEWITT, MCLEAN & PIATT

FILE NAME =	USER NAME = ceerlockjd	DESIGNED -	REVISED -	STATE OF ILLINOIS DEPARTMENT OF TRANSPORTATION	LOCATION #1 TYPICAL SECTIONS F.A.P. ROUTE 317 (U.S. 24)			F.A. RTE.	SECTION	COUNTY	TOTAL SHEETS	SHEET NO.	
ei:\pwork\pwork\ceerlockjd\0336878\0570A23-sht-Typicals.dgn		DRAWN -	REVISED -		SCALE:	SHEET 1	OF 2	SHEETS	STA.	TO STA.	••	17	7
		CHECKED -	REVISED -		CONTRACT NO. 70A23								
#MODELNAME#	PLOT DATE = 3/20/2013	DATE -	REVISED -		ILLINOIS FED. AID PROJECT								

LOCATION #1 TYPICAL SECTION ③

F.A.P. ROUTE 317 (U.S. 24)

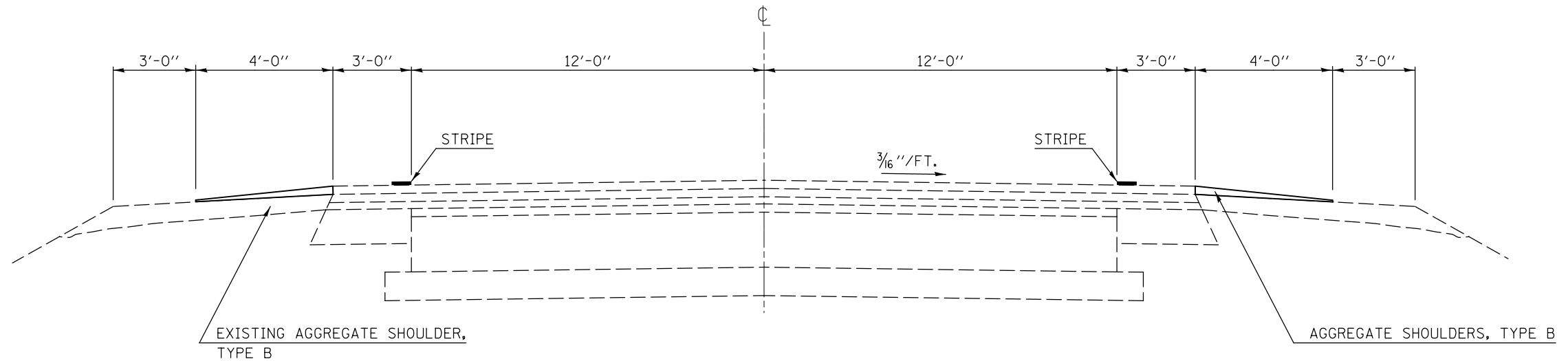
STATION TO STATION
 ② 1159+98.00 1202+96.00 ④



LOCATION #1 TYPICAL SECTION ④

F.A.P. ROUTE 317 (U.S. 24)

STATION TO STATION
 ③ 1202+96.00 1518+50.00



• SHOULDER REPAIR FY2013-1
 •• DEWITT, MCLEAN & PIATT

FILE NAME =	USER NAME = ceerlockjd	DESIGNED -	REVISED -	STATE OF ILLINOIS DEPARTMENT OF TRANSPORTATION	LOCATION #1 TYPICAL SECTIONS F.A.P. ROUTE 317 (U.S. 24)			F.A. RTE.	SECTION	COUNTY	TOTAL SHEETS	SHEET NO.	
ei:\pwork\pwork\ceerlockjd\0336878\0570A23-sht-Typicals.dgn		DRAWN -	REVISED -		SCALE:	SHEET 2	OF 2	SHEETS	STA.	TO STA.	••	17	8
		CHECKED -	REVISED -		CONTRACT NO. 70A23								
MODELNAME	PLOT DATE = 3/20/2013	DATE -	REVISED -		ILLINOIS FED. AID PROJECT								

LOCATION #2 TYPICAL SECTION ①

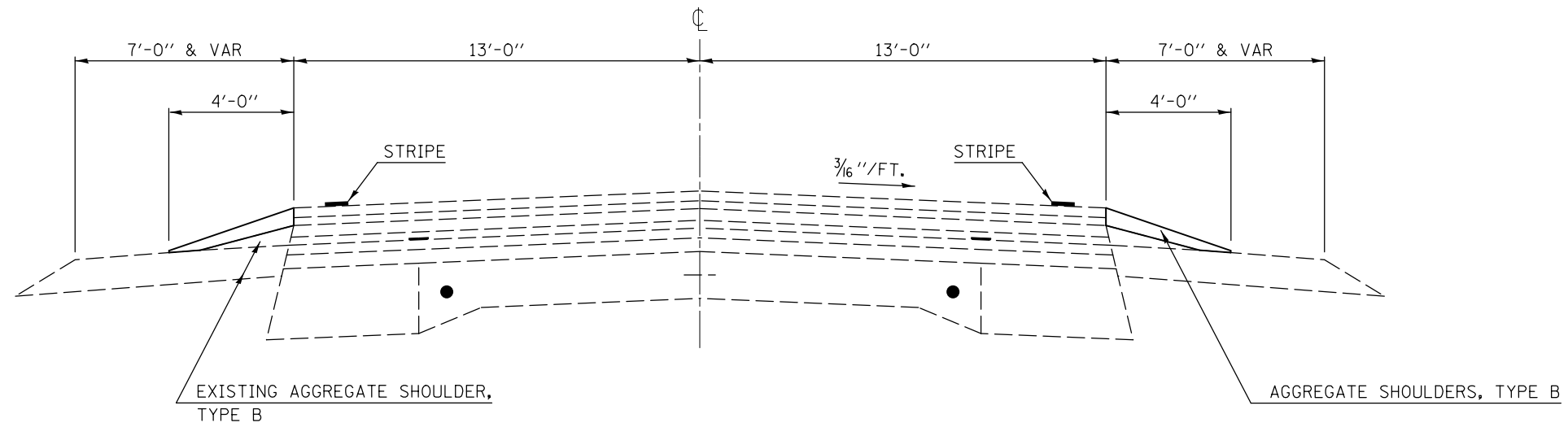
F.A.P. ROUTE 721 (IL. 10)

STATION	TO	STATION
624+74.00		628+77.50 ②
② 845+39.00		852+95.00 ②
② 891+61.00		901+07.00 ②
② 1275+59.50		1289+11.00 ②

STRUCTURE OMISSION:

S. N. 074-0076

STA. 1279+26.00 TO STA. 1285+16.00



STATION EQUATIONS:

652+12.00(BK) = 652+09.00(AH)
 665+43.50(BK) = 665+48.00(AH)
 678+62.00(BK) = 678+63.00(AH)
 719+01.00(BK) = 719+18.00(AH)
 732+21.00(BK) = 732+23.00(AH)
 745+56.50(BK) = 745+60.00(AH)
 758+79.00(BK) = 758+84.00(AH)
 825+83.00(BK) = 825+88.00(AH)
 840+94.70(BK) = 841+02.94(AH)
 878+94.00(BK) = 879+01.00(AH)
 883+90.80(BK) = 884+00.33(AH)
 915+83.60(BK) = 915+84.09(AH)

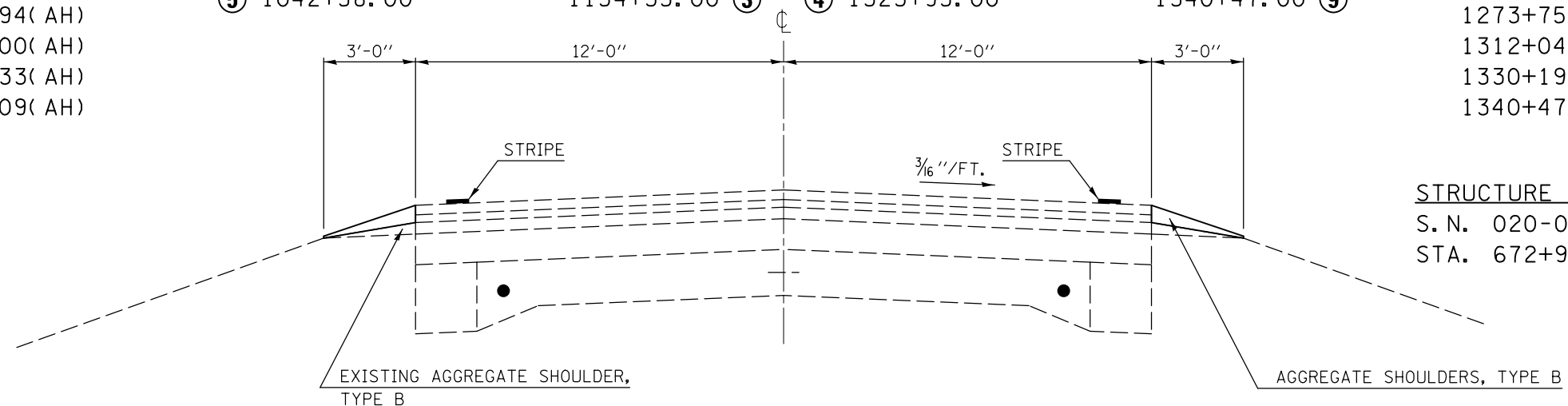
LOCATION #2 TYPICAL SECTION ②

F.A.P. ROUTE 721 (IL. 10)

STATION	TO	STATION	TO	STATION
① 628+77.50		845+39.00 ①		③ 1188+05.00
① 852+95.00		891+61.00 ①		④ 1227+11.00
① 901+07.00		922+40.00 ③		④ 1262+83.00
③ 929+55.00		1027+00.00 ⑤		① 1289+11.00
⑤ 1042+58.00		1154+35.00 ③		④ 1323+95.00
				1202+26.00 ④
				1258+80.00 ④
				1275+59.50 ①
				1314+98.00 ④
				1340+47.00 ⑨

STATION EQUATIONS:

944+90.50(BK) = 944+92.30(AH)
 984+96.00(BK) = 985+00.00(AH)
 1024+75.00(BK) = 1024+77.00(AH)
 1053+90.50(BK) = 1053+85.00(AH)
 1085+00.00(BK) = 1085+02.50(AH)
 1116+22.50(BK) = 1116+24.00(AH)
 1142+55.50(BK) = 1142+49.00(AH)
 1199+97.00(BK) = 1199+97.53(AH)
 1273+75.50(BK) = 1273+78.50(AH)
 1312+04.50(BK) = 1312+04.00(AH)
 1330+19.00(BK) = 1330+22.00(AH)
 1340+47.00(BK) = 23+00.00(AH)



STRUCTURE OMISSION:

S. N. 020-0038

STA. 672+93.40 TO STA. 674+93.40

• SHOULDER REPAIR FY2013-1
 •• DEWITT, MCLEAN & PIATT

FILE NAME =	USER NAME = ceerlockjd	DESIGNED -	REVISED -	STATE OF ILLINOIS DEPARTMENT OF TRANSPORTATION	LOCATION #2 TYPICAL SECTIONS F.A.P. ROUTE 721 (IL. 10)			F.A. RTE.	SECTION	COUNTY	TOTAL SHEETS	SHEET NO.
		DRAWN -	REVISED -									
		CHECKED -	REVISED -									
		DATE -	REVISED -									
PLOT SCALE = 40.0000' / in. PLOT DATE = 3/20/2013				SCALE: SHEET 1 OF 5 SHEETS STA. TO STA.			CONTRACT NO. 70A23					
ILLINOIS FED. AID PROJECT												

LOCATION #2 TYPICAL SECTION ③

F.A.P. ROUTE 721 (IL. 10)

STATION	TO	STATION	
② 922+40.00		929+55.00	②
② 1154+35.00		1155+87.00	⑦
⑥ 1185+48.00		1188+05.00	②
④ 1209+02.00		1214+51.00	④ (12' LEFT LANE, 13' RIGHT LANE)

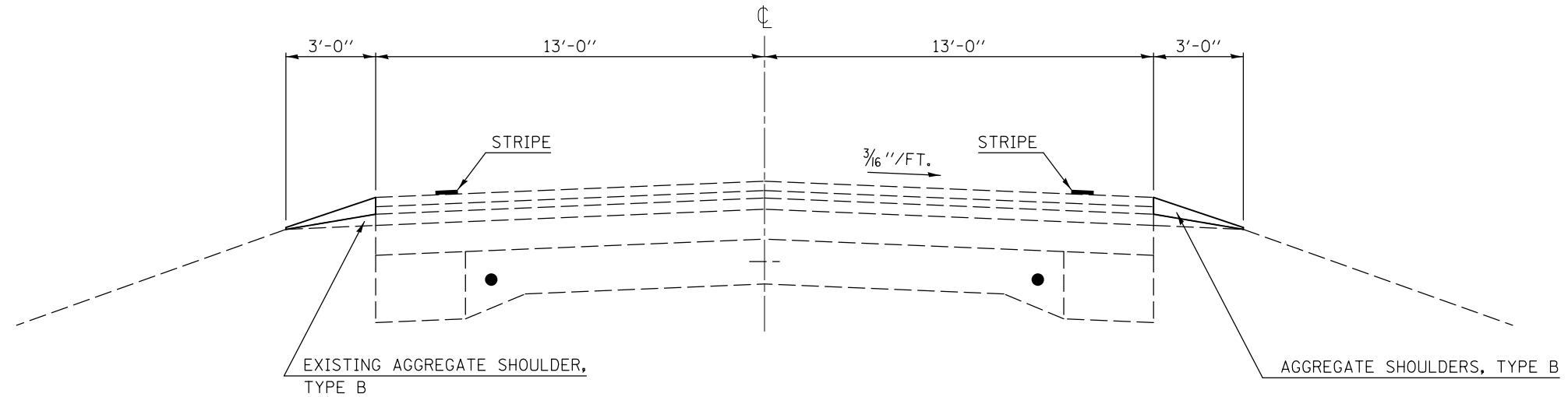
STRUCTURE OMISSION:

S. N. 074-0003

STA. 925+02.39 TO STA. 926+70.50

S. N. 074-0005

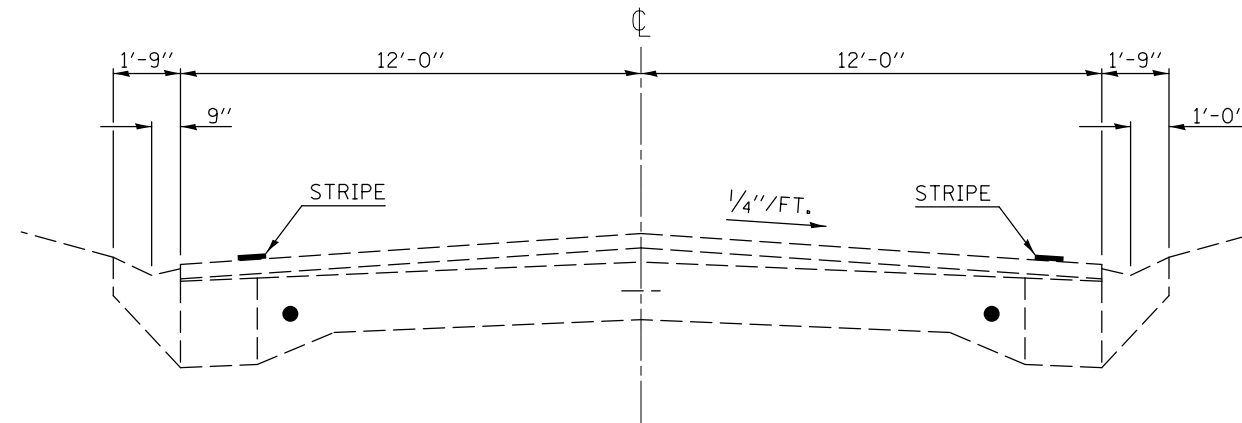
STA. 1209+43.78 TO STA. 1212+34.80



LOCATION #2 TYPICAL SECTION ④

F.A.P. ROUTE 721 (IL. 10)

STATION	TO	STATION	
② 1202+26.00		1209+02.00	③
③ 1214+51.00		1227+11.00	②
② 1258+80.00		1262+83.00	② (GUTTER LEFT SIDE ONLY)
② 1314+98.00		1323+95.00	②



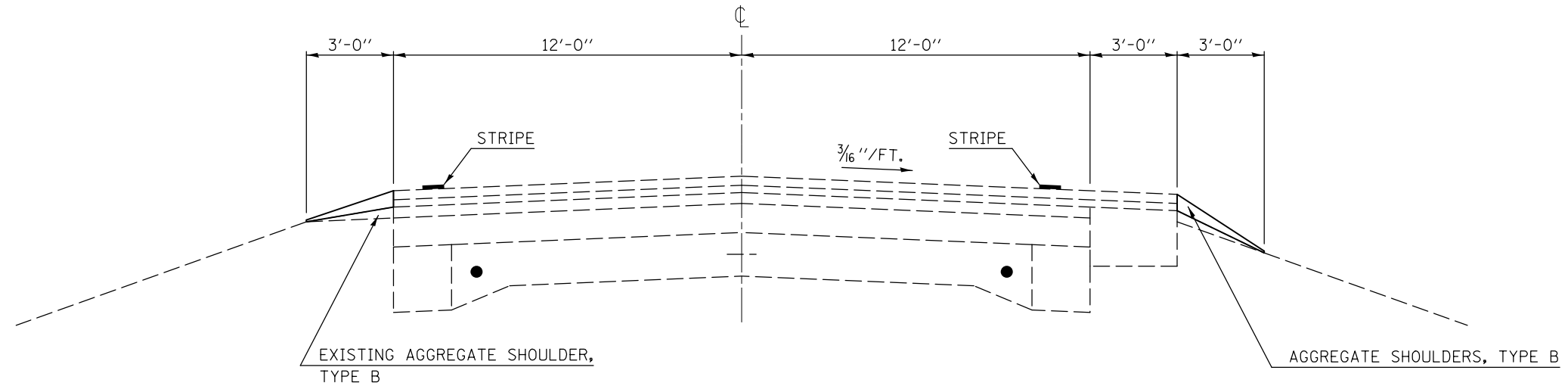
• SHOULDER REPAIR FY2013-1
•• DEWITT, MCLEAN & PIATT

FILE NAME =	USER NAME = ceerlockjd	DESIGNED -	REVISED -	STATE OF ILLINOIS DEPARTMENT OF TRANSPORTATION	LOCATION #2 TYPICAL SECTIONS F.A.P. ROUTE 721 (IL. 10)			F.A. RTE.	SECTION	COUNTY	TOTAL SHEETS	SHEET NO.	
ei:\pwork\pwork\ceerlockjd\0336878\0570A23-sht-Typicals.dgn		DRAWN -	REVISED -		SCALE:	SHEET 2	OF 5	SHEETS	STA.	TO STA.	••	17	10
	PLOT SCALE = 40.0000' / in.	CHECKED -	REVISED -		CONTRACT NO. 70A23								
#MODELNAME#	PLOT DATE = 3/20/2013	DATE -	REVISED -		ILLINOIS FED. AID PROJECT								

LOCATION #2 TYPICAL SECTION ⑤

F.A.P. ROUTE 721 (IL. 10)

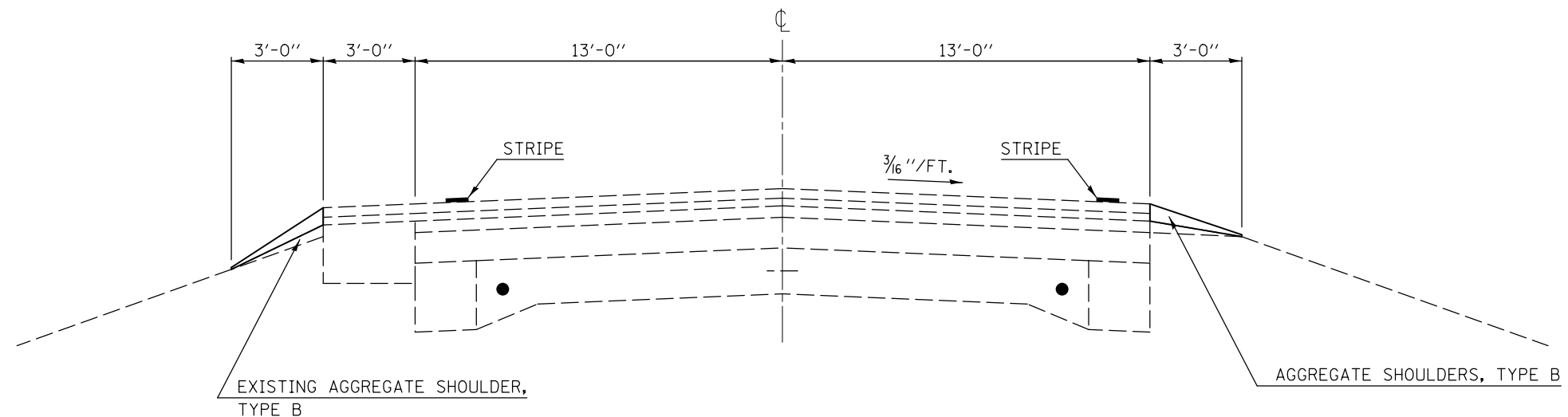
STATION TO STATION
 ② 1027+00.00 1042+58.00 ②



LOCATION #2 TYPICAL SECTION ⑥

F.A.P. ROUTE 721 (IL. 10)

STATION TO STATION
 ⑧ 1177+02.00 1185+48.00 ③



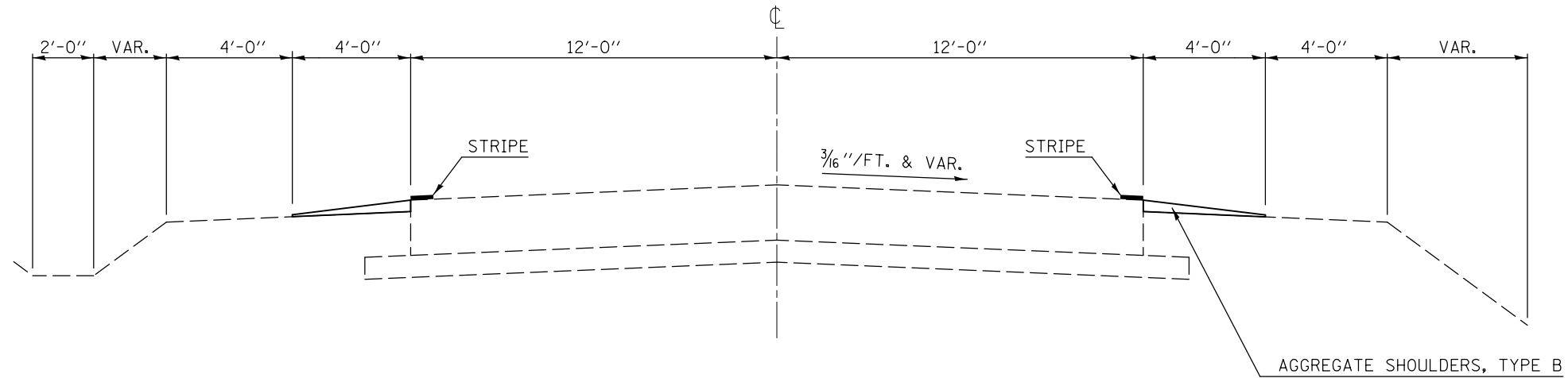
• SHOULDER REPAIR FY2013-1
 •• DEWITT, MCLEAN & PIATT

FILE NAME =	USER NAME = ceerlockjd	DESIGNED -	REVISED -	STATE OF ILLINOIS DEPARTMENT OF TRANSPORTATION	LOCATION #2 TYPICAL SECTIONS F.A.P. ROUTE 721 (IL. 10)			F.A. RTE.	SECTION	COUNTY	TOTAL SHEETS	SHEET NO.	
ci:\pwork\pwork\ceerlockjd\0336878\0570A23-sht-Typicals.dgn		DRAWN -	REVISED -		SCALE:	SHEET 3	OF 5	SHEETS	STA.	TO STA.	••	17	11
	PLOT SCALE = 40.0000' / in.	CHECKED -	REVISED -		CONTRACT NO. 70A23								
#MODELNAME#	PLOT DATE = 3/20/2013	DATE -	REVISED -		ILLINOIS FED. AID PROJECT								

LOCATION #2 TYPICAL SECTION ⑦

F.A.P. ROUTE 721 (IL. 10)

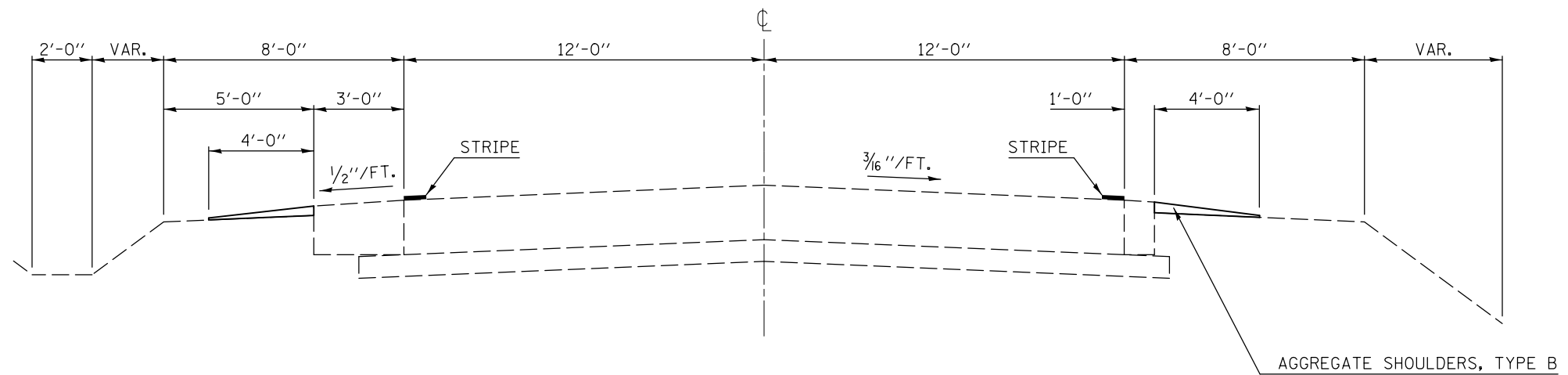
STATION TO STATION
 ③ 1155+87.00 1166+58.29 (RAILTOAD OMISSION)
 (RAILTOAD OMISSION) 1167+35.15 1175+75.00 ⑧



LOCATION #2 TYPICAL SECTION ⑧

F.A.P. ROUTE 721 (IL. 10)

STATION TO STATION
 ⑦ 1175+75.00 1177+02.00 ⑥



• SHOULDER REPAIR FY2013-1
 •• DEWITT, MCLEAN & PIATT

FILE NAME =	USER NAME = ceorlockjd	DESIGNED -	REVISED -	STATE OF ILLINOIS DEPARTMENT OF TRANSPORTATION	LOCATION #2 TYPICAL SECTIONS F.A.P. ROUTE 721 (IL. 10)	F.A. RTE.	SECTION	COUNTY	TOTAL SHEETS	SHEET NO.
ci:\pwork\pwork\ceorlockjd\0336878\0570A23-sht-Typicals.dgn		DRAWN -	REVISED -			VAR.	.	••	17	12
#MODELNAME#	PLOT SCALE = 40.0000' / in.	CHECKED -	REVISED -		SCALE:	SHEET 4 OF 5 SHEETS		STA.	TO STA.	
	PLOT DATE = 3/20/2013	DATE -	REVISED -						CONTRACT NO. 70A23	
						ILLINOIS FED. AID PROJECT				

STATION EQUATIONS:

1340+47.00(BK) = 23+00.00(AH)
 60+00.00(BK) = 624+43.75(AH)

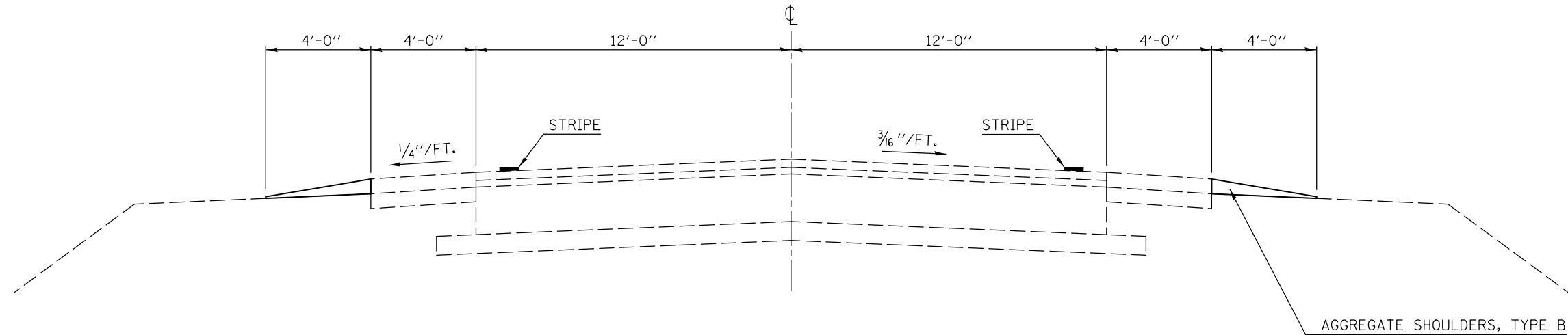
LOCATION #2 TYPICAL SECTION ⑨

F.A.P. ROUTE 721 (IL. 10)

② STATION 23+00.00 TO STATION 60+00.00 ⑩

STRUCTURE OMISSION:

S. N. 074-0007
 STA. 40+63.83 TO STA. 43+30.99



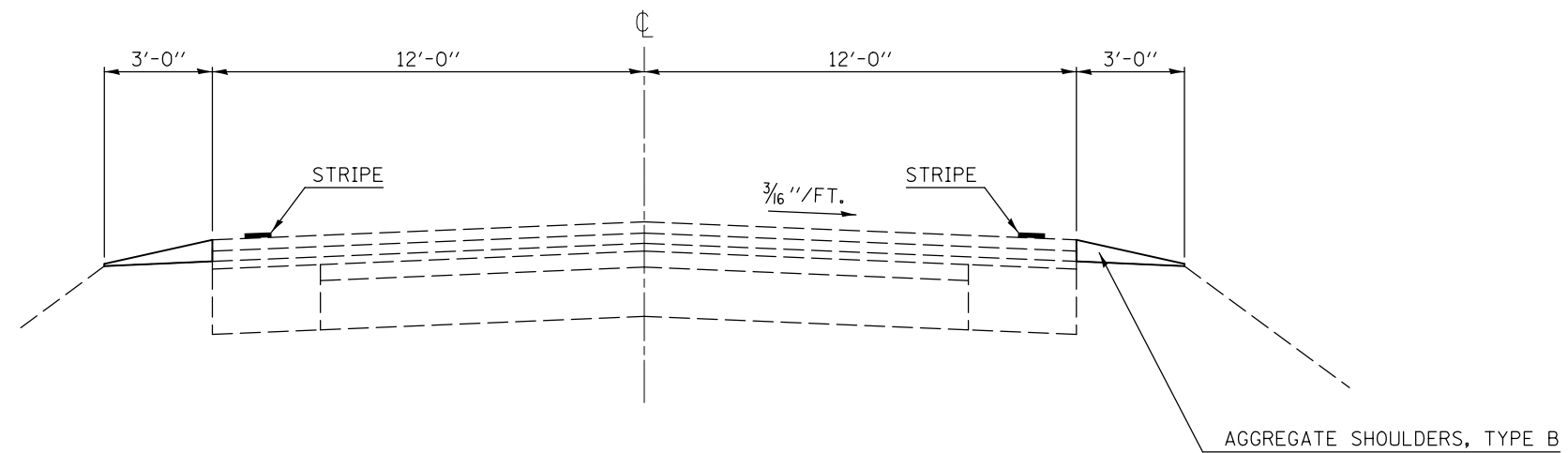
STATION EQUATION:

60+00.00(BK) = 624+43.75(AH)

LOCATION #2 TYPICAL SECTION ⑩

F.A.S. ROUTE 1513 (IL. 10)

⑨ STATION 624+43.75 TO STATION 563+40.00



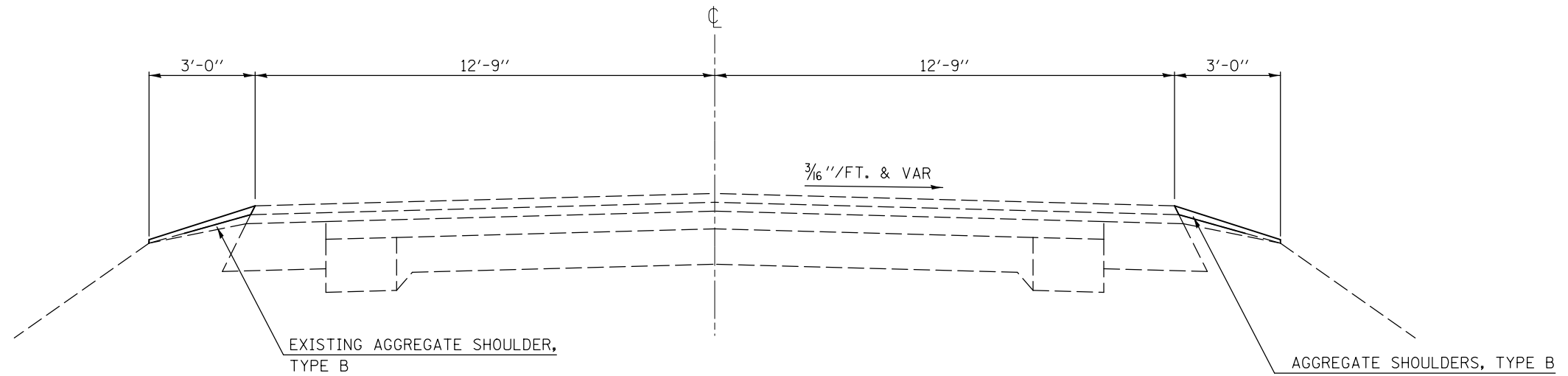
• SHOULDER REPAIR FY2013-1
 •• DEWITT, MCLEAN & PIATT

FILE NAME =	USER NAME = ceerlockjd	DESIGNED -	REVISED -	STATE OF ILLINOIS DEPARTMENT OF TRANSPORTATION	LOCATION #2 TYPICAL SECTIONS F.A.P. ROUTE 721 (IL. 10)			F.A. RTE.	SECTION	COUNTY	TOTAL SHEETS	SHEET NO.	
ei:\pwork\pwork\ceerlockjd\0336878\0570A23-sht-Typicals.dgn		DRAWN -	REVISED -		SCALE:	SHEET 5	OF 5	SHEETS	STA.	TO STA.	••	17	13
		CHECKED -	REVISED -								CONTRACT NO. 70A23		
MODELNAME	PLOT DATE = 3/20/2013	DATE -	REVISED -		ILLINOIS FED. AID PROJECT								

LOCATION #3 TYPICAL SECTION ①

F.A.S. ROUTE 1517 (U.S. 150)

STATION TO STATION
 1026+75.00 1147+82.00



• SHOULDER REPAIR FY2013-1
 •• DEWITT, MCLEAN & PIATT

FILE NAME =	USER NAME = ceerlockjd	DESIGNED -	REVISED -
ei:\pwork\pwork\ceerlockjd\0336878\0570A23-sht-Typicals.dgn		DRAWN -	REVISED -
	PLOT SCALE = 40.0000' / in.	CHECKED -	REVISED -
#MODELNAME#	PLOT DATE = 3/20/2013	DATE -	REVISED -

STATE OF ILLINOIS
 DEPARTMENT OF TRANSPORTATION

LOCATION #3 TYPICAL SECTIONS
 F.A.S. ROUTE 1517 (U.S. 150)

SCALE: SHEET 1 OF 1 SHEETS STA. TO STA.

F.A. RTE.	SECTION	COUNTY	TOTAL SHEETS	SHEET NO.
VAR.	*	**	17	14
			CONTRACT NO. 70A23	
ILLINOIS FED. AID PROJECT				

SCHEDULE OF QUANTITIES

48101200 AGGREGATE SHOULDERS, TYPE B

LOCATION #1 / F.A.P. RTE. 317 (U.S.24) / MCLEAN COUNTY

LOCATION	STATION	TO	STATION	LENGTH (FT)	WIDTH (FT)	AVE. DEPTH (INCH)	QUANTITY (TON)	
RT. SHOULDER	1159+98.00		1202+96.00	4298.00	4.00	1.375	131.33	
RT. SHOULDER	1202+96.00		1493+56.58	29060.58	4.00	1.375	887.96	
RT. SHOULDER	1494+43.42		1518+50.00	2406.58	4.00	1.375	73.53	
LT. SHOULDER	1133+00.00		1134+00.00	100.00	4.00	1.375	3.06	
LT. SHOULDER	1159+98.00		1202+96.00	4298.00	4.00	1.375	131.33	
LT. SHOULDER	1202+96.00		1493+56.58	29060.58	4.00	1.375	887.96	
LT. SHOULDER	1494+43.42		1518+50.00	2406.58	4.00	1.375	73.53	
TOTAL =							2188.70	TON
USE =							2189.00	TON

NOTE:

FOR QUANTITIES AT LOCATION #2 SEE SHEET NUMBER 16

48101200 AGGREGATE SHOULDERS, TYPE B

LOCATION #3 / F.A.S. RTE. 1517 (U.S. 150) / MCLEAN COUNTY

LOCATION	STATION	TO	STATION	LENGTH (FT)	WIDTH (FT)	AVE. DEPTH (INCH)	QUANTITY (TON)	
RT. SHOULDER	1026+75.00		1147+82.00	12107.00	3.00	1.375	277.45	
LT. SHOULDER	1026+75.00		1147+82.00	12107.00	3.00	1.375	277.45	
TOTAL =							554.90	TON
USE =							555.00	TON

- SHOULDER REPAIR FY2013-1
- DEWITT, MCLEAN & PIATT

FILE NAME =	USER NAME = ceerlockjd	DESIGNED -	REVISED -	STATE OF ILLINOIS DEPARTMENT OF TRANSPORTATION	SCHEDULE OF QUANTITIES			F.A. RTE.	SECTION	COUNTY	TOTAL SHEETS	SHEET NO.
et:\pwork\pwork\ceerlockjd\0336878\0570A23-sht-Schedules.dgn		DRAWN -	REVISED -		•							
MODELNAME	PLOT SCALE = 40.0000' / in.	CHECKED -	REVISED -		••							
	PLOT DATE = 3/20/2013	DATE -	REVISED -		CONTRACT NO. 70A23	SCALE:	SHEET 1	OF 2	SHEETS	STA.	TO STA.	ILLINOIS FED. AID PROJECT

SCHEDULE OF QUANTITIES

48101200 AGGREGATE SHOULDERS, TYPE B
 LOCATION #2 / F.A.P. RTE. 721& F.A.S. RTE. 1513 (IL.10) / DEWITT & PIATT COUNTY

LOCATION	STATION	TO	STATION	LENGTH (FT)	WIDTH (FT)	AVE. DEPTH (INCH)	QUANTITY (TON)
RT. SHOULDER	624+74.00		628+77.50	403.50	4.00	1.375	12.33
RT. SHOULDER	628+77.50		652+12.00 (BK)	2334.50	3.00	1.375	53.50
RT. SHOULDER	652+09.00 (AH)		665+43.50 (BK)	1334.50	3.00	1.375	30.58
RT. SHOULDER	665+48.00 (AH)		672+93.40	745.40	3.00	1.375	17.08
RT. SHOULDER	674+93.40		678+62.00 (BK)	368.60	3.00	1.375	8.45
RT. SHOULDER	678+63.00 (AH)		719+01.00 (BK)	4038.00	3.00	1.375	92.54
RT. SHOULDER	719+18.00 (AH)		732+21.00 (BK)	1303.00	3.00	1.375	29.86
RT. SHOULDER	732+23.00 (AH)		745+56.50 (BK)	1333.50	3.00	1.375	30.56
RT. SHOULDER	745+60.00 (AH)		758+79.00 (BK)	1319.00	3.00	1.375	30.23
RT. SHOULDER	758+84.00 (AH)		785+57.50	2673.50	3.00	1.375	61.27
RT. SHOULDER	785+57.50		825+83.00 (BK)	4025.50	3.00	1.375	92.25
RT. SHOULDER	825+88.00 (AH)		840+94.70 (BK)	1506.70	3.00	1.375	34.53
RT. SHOULDER	841+02.94 (AH)		845+39.00	436.06	3.00	1.375	9.99
RT. SHOULDER	845+39.00		852+95.00	756.00	4.00	1.375	23.10
RT. SHOULDER	852+95.00		878+94.00 (BK)	2599.00	3.00	1.375	59.56
RT. SHOULDER	879+01.00 (AH)		883+90.80 (BK)	489.80	3.00	1.375	11.22
RT. SHOULDER	884+00.33 (AH)		891+61.00	760.67	3.00	1.375	17.43
RT. SHOULDER	891+61.00		901+07.00	946.00	4.00	1.375	28.91
RT. SHOULDER	901+07.00		915+83.60 (BK)	1476.60	3.00	1.375	33.84
RT. SHOULDER	915+84.09 (AH)		922+40.00	655.91	3.00	1.375	15.03
RT. SHOULDER	922+40.00		925+02.39	262.39	3.00	1.375	6.01
RT. SHOULDER	926+70.50		929+55.00	284.50	3.00	1.375	6.52
RT. SHOULDER	929+55.00		944+90.50 (BK)	1535.50	3.00	1.375	35.19
RT. SHOULDER	944+92.30 (AH)		984+96.00 (BK)	4003.70	3.00	1.375	91.75
RT. SHOULDER	985+00.00 (AH)		1024+75.00 (BK)	3975.00	3.00	1.375	91.09
RT. SHOULDER	1024+77.00 (AH)		1027+00.00	223.00	3.00	1.375	5.11
RT. SHOULDER	1027+00.00		1042+58.00	1558.00	3.00	1.375	35.70
RT. SHOULDER	1042+58.00		1053+90.50 (BK)	1132.50	3.00	1.375	25.95
RT. SHOULDER	1053+85.00 (AH)		1085+00.00 (BK)	3115.00	3.00	1.375	71.39
RT. SHOULDER	1085+02.50 (AH)		1116+22.50 (BK)	3120.00	3.00	1.375	71.50
RT. SHOULDER	1116+24.00 (AH)		1142+55.50 (BK)	2631.50	3.00	1.375	60.31
RT. SHOULDER	1142+49.00 (AH)		1154+35.00	1186.00	3.00	1.375	27.18
RT. SHOULDER	1154+35.00		1155+87.00	152.00	3.00	1.375	3.48
RT. SHOULDER	1155+87.00		1166+58.29	1071.29	4.00	1.375	32.73
RT. SHOULDER	1167+35.15		1175+75.00	839.85	4.00	1.375	25.66
RT. SHOULDER	1175+75.00		1177+02.00	127.00	4.00	1.375	3.88
RT. SHOULDER	1177+02.00		1185+48.00	846.00	3.00	1.375	19.39
RT. SHOULDER	1185+48.00		1188+05.00	257.00	3.00	1.375	5.89
RT. SHOULDER	1188+05.00		1199+97.00 (BK)	1192.00	3.00	1.375	27.32
RT. SHOULDER	1199+97.53 (AH)		1202+26.00	228.47	3.00	1.375	5.24
RT. SHOULDER	1209+02.00		1209+43.78	41.78	3.00	1.375	0.96
RT. SHOULDER	1212+34.80		1214+51.00	216.20	3.00	1.375	4.95
RT. SHOULDER	1227+11.00		1258+80.00	3169.00	3.00	1.375	72.62
RT. SHOULDER	1258+80.00		1262+83.00	403.00	3.00	1.375	9.24
RT. SHOULDER	1262+83.00		1273+75.50 (BK)	1092.50	3.00	1.375	25.04
RT. SHOULDER	1273+78.50 (AH)		1275+59.50	181.00	3.00	1.375	4.15
RT. SHOULDER	1275+59.50		1279+26.00	366.50	4.00	1.375	11.20
RT. SHOULDER	1285+16.00		1289+11.00	395.00	4.00	1.375	12.07
RT. SHOULDER	1289+11.00		1312+04.50 (BK)	2293.50	3.00	1.375	52.56
RT. SHOULDER	1312+04.00 (AH)		1314+98.00	294.00	3.00	1.375	6.74
RT. SHOULDER	1323+95.00		1330+19.00 (BK)	624.00	3.00	1.375	14.30
RT. SHOULDER	1330+22.00 (AH)		1340+47.00 (BK)	1025.00	3.00	1.375	23.49
RT. SHOULDER	23+00.00 (AH)		40+63.83	1763.83	4.00	1.375	53.89
RT. SHOULDER	43+30.99		60+00.00 (BK)	1669.01	4.00	1.375	51.00
RT. SHOULDER	624+43.75 (AH)		563+40.00	6103.75	3.00	1.375	139.88

48101200 AGGREGATE SHOULDERS, TYPE B
 LOCATION #2 / F.A.P. RTE. 721& F.A.S. RTE. 1513 (IL.10) / DEWITT & PIATT COUNTY

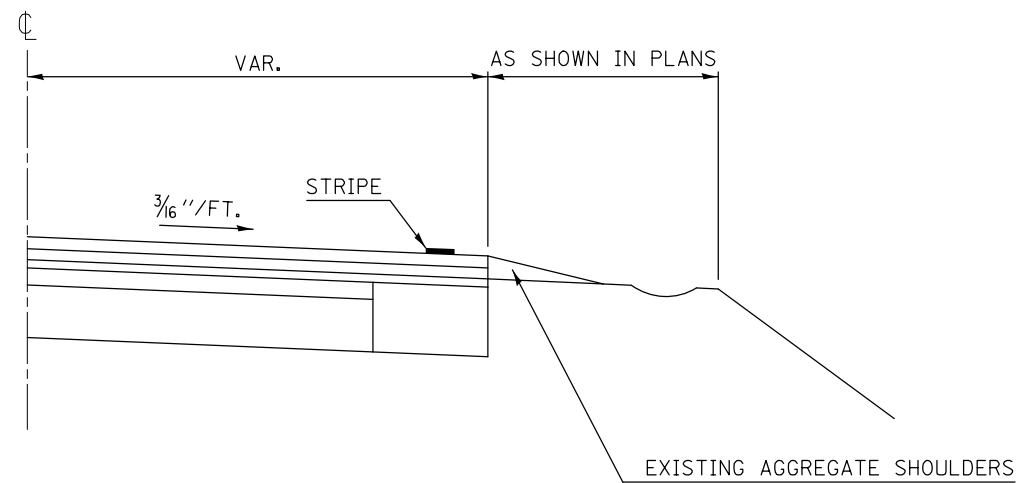
LOCATION	STATION	TO	STATION	LENGTH (FT)	WIDTH (FT)	AVE. DEPTH (INCH)	QUANTITY (TON)
LT. SHOULDER	624+74.00		628+77.50	403.50	4.00	1.375	12.33
LT. SHOULDER	628+77.50		652+12.00 (BK)	2334.50	3.00	1.375	53.50
LT. SHOULDER	652+09.00 (AH)		665+43.50 (BK)	1334.50	3.00	1.375	30.58
LT. SHOULDER	665+48.00 (AH)		672+93.40	745.40	3.00	1.375	17.08
LT. SHOULDER	674+93.40		678+62.00 (BK)	368.60	3.00	1.375	8.45
LT. SHOULDER	678+63.00 (AH)		719+01.00 (BK)	4038.00	3.00	1.375	92.54
LT. SHOULDER	719+18.00 (AH)		732+21.00 (BK)	1303.00	3.00	1.375	29.86
LT. SHOULDER	732+23.00 (AH)		745+56.50 (BK)	1333.50	3.00	1.375	30.56
LT. SHOULDER	745+60.00 (AH)		758+79.00 (BK)	1319.00	3.00	1.375	30.23
LT. SHOULDER	758+84.00 (AH)		785+57.50	2673.50	3.00	1.375	61.27
LT. SHOULDER	785+57.50		825+83.00 (BK)	4025.50	3.00	1.375	92.25
LT. SHOULDER	825+88.00 (AH)		840+94.70 (BK)	1506.70	3.00	1.375	34.53
LT. SHOULDER	841+02.94 (AH)		845+39.00	436.06	3.00	1.375	9.99
LT. SHOULDER	845+39.00		852+95.00	756.00	4.00	1.375	23.10
LT. SHOULDER	852+95.00		878+94.00 (BK)	2599.00	3.00	1.375	59.56
LT. SHOULDER	879+01.00 (AH)		883+90.80 (BK)	489.80	3.00	1.375	11.22
LT. SHOULDER	884+00.33 (AH)		891+61.00	760.67	3.00	1.375	17.43
LT. SHOULDER	891+61.00		901+07.00	946.00	4.00	1.375	28.91
LT. SHOULDER	901+07.00		915+83.60 (BK)	1476.60	3.00	1.375	33.84
LT. SHOULDER	915+84.09 (AH)		922+40.00	655.91	3.00	1.375	15.03
LT. SHOULDER	922+40.00		925+02.39	262.39	3.00	1.375	6.01
LT. SHOULDER	926+70.50		929+55.00	284.50	3.00	1.375	6.52
LT. SHOULDER	929+55.00		944+90.50 (BK)	1535.50	3.00	1.375	35.19
LT. SHOULDER	944+92.30 (AH)		984+96.00 (BK)	4003.70	3.00	1.375	91.75
LT. SHOULDER	985+00.00 (AH)		1024+75.00 (BK)	3975.00	3.00	1.375	91.09
LT. SHOULDER	1024+77.00 (AH)		1027+00.00	223.00	3.00	1.375	5.11
LT. SHOULDER	1027+00.00		1042+58.00	1558.00	3.00	1.375	35.70
LT. SHOULDER	1042+58.00		1053+90.50 (BK)	1132.50	3.00	1.375	25.95
LT. SHOULDER	1053+85.00 (AH)		1085+00.00 (BK)	3115.00	3.00	1.375	71.39
LT. SHOULDER	1085+02.50 (AH)		1116+22.50 (BK)	3120.00	3.00	1.375	71.50
LT. SHOULDER	1116+24.00 (AH)		1142+55.50 (BK)	2631.50	3.00	1.375	60.31
LT. SHOULDER	1142+49.00 (AH)		1154+35.00	1186.00	3.00	1.375	27.18
LT. SHOULDER	1154+35.00		1155+87.00	152.00	3.00	1.375	3.48
LT. SHOULDER	1155+87.00		1166+58.29	1071.29	4.00	1.375	32.73
LT. SHOULDER	1167+35.15		1175+75.00	839.85	4.00	1.375	25.66
LT. SHOULDER	1175+75.00		1177+02.00	127.00	4.00	1.375	3.88
LT. SHOULDER	1177+02.00		1185+48.00	846.00	3.00	1.375	19.39
LT. SHOULDER	1185+48.00		1188+05.00	257.00	3.00	1.375	5.89
LT. SHOULDER	1188+05.00		1199+97.00 (BK)	1192.00	3.00	1.375	27.32
LT. SHOULDER	1199+97.53 (AH)		1202+26.00	228.47	3.00	1.375	5.24
LT. SHOULDER	1209+02.00		1209+43.78	41.78	3.00	1.375	0.96
LT. SHOULDER	1212+34.80		1214+51.00	216.20	3.00	1.375	4.95
LT. SHOULDER	1227+11.00		1258+80.00	3169.00	3.00	1.375	72.62
LT. SHOULDER	1258+80.00		1262+83.00	403.00	3.00	1.375	9.24
LT. SHOULDER	1262+83.00		1273+75.50 (BK)	1092.50	3.00	1.375	25.04
LT. SHOULDER	1273+78.50 (AH)		1275+59.50	181.00	3.00	1.375	4.15
LT. SHOULDER	1275+59.50		1279+26.00	366.50	4.00	1.375	11.20
LT. SHOULDER	1285+16.00		1289+11.00	395.00	4.00	1.375	12.07
LT. SHOULDER	1289+11.00		1312+04.50 (BK)	2293.50	3.00	1.375	52.56
LT. SHOULDER	1312+04.00 (AH)		1314+98.00	294.00	3.00	1.375	6.74
LT. SHOULDER	1323+95.00		1330+19.00 (BK)	624.00	3.00	1.375	14.30
LT. SHOULDER	1330+22.00 (AH)		1340+47.00 (BK)	1025.00	3.00	1.375	23.49
LT. SHOULDER	23+00.00 (AH)		40+63.83	1763.83	4.00	1.375	53.89
LT. SHOULDER	43+30.99		60+00.00 (BK)	1669.01	4.00	1.375	51.00
LT. SHOULDER	624+43.75 (AH)		563+40.00	6103.75	3.00	1.375	139.88

DEWITT COUNTY =	733.0	TON	TOTAL =	3642.02	TON
PIATT COUNTY =	2909.0	TON	USE =	3642.00	TON

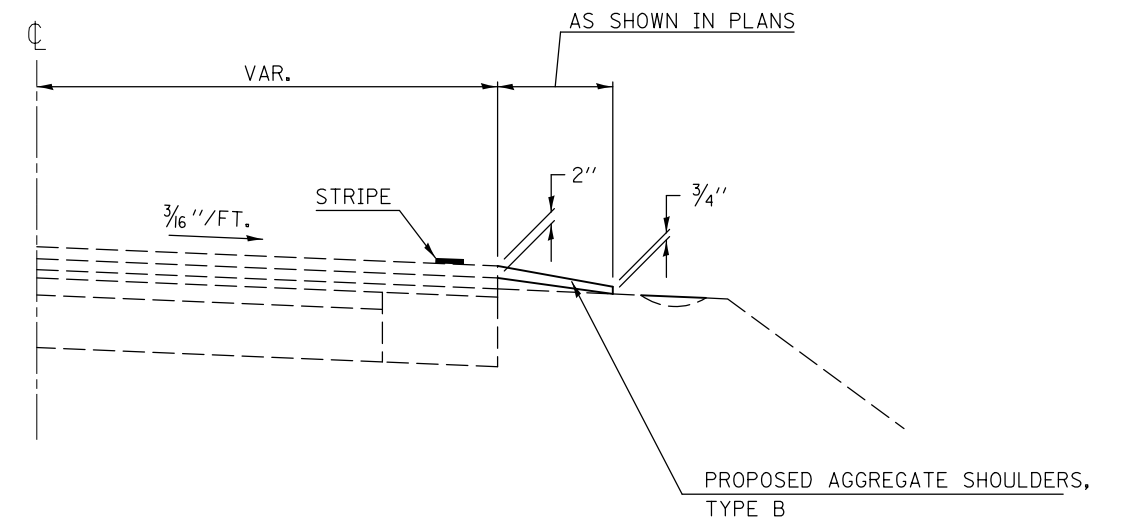
SHOULDER REPAIR FY2013-1

DETAIL OF AGGREGATE SHOULDER

EXISTING SHOULDER



PROPOSED SHOULDER



• SHOULDER REPAIR FY2013-1
 •• DEWITT, MCLEAN & PIATT

FILE NAME =	USER NAME = ceorlockjd	DESIGNED -	REVISED -
c:\pwwork\pwwork\ceorlockjd\0336878\0570A23-sht-Details.dgn		DRAWN -	REVISED -
	PLOT SCALE = 40.0000' / in.	CHECKED -	REVISED -
MODELNAME	PLOT DATE = 3/20/2013	DATE -	REVISED -

**STATE OF ILLINOIS
 DEPARTMENT OF TRANSPORTATION**

DETAIL OF AGGREGATE SHOULDER

SCALE: SHEET 1 OF 1 SHEETS STA. TO STA.

F.A. RTE.	SECTION	COUNTY	TOTAL SHEETS	SHEET NO.
VAR.	•	••	17	17
			CONTRACT NO. 70A23	
ILLINOIS FED. AID PROJECT				