

**PROPOSED
HIGHWAY PLANS**

VARIOUS ROUTES

**SECTION SHOULDER REPAIR FY2013-2
EAST FIELD AREA - AGGREGATE SHOULDER REPAIR
DOUGLAS & EDGAR COUNTIES**

C-95-010-13

SEE PAGES 3-5 FOR LOCATION MAPS, GROSS & NET LENGTHS OF PROJECT BY LOCATION

F.A. RTE.	SECTION	COUNTY	TOTAL SHEETS	SHEET NO.
VAR.	*	**	15	1
		ILLINOIS	CONTRACT NO. 70A24	

* SHOULDER REPAIR FY2013-2
** DOUGLAS & EDGAR

D-95-010-13



FOR INDEX OF SHEETS, SEE SHEET NO. 2

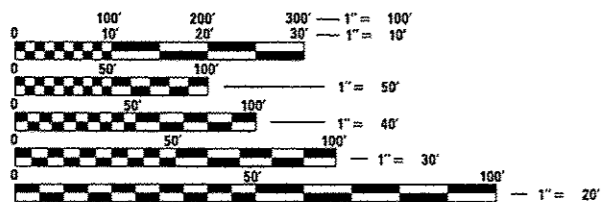
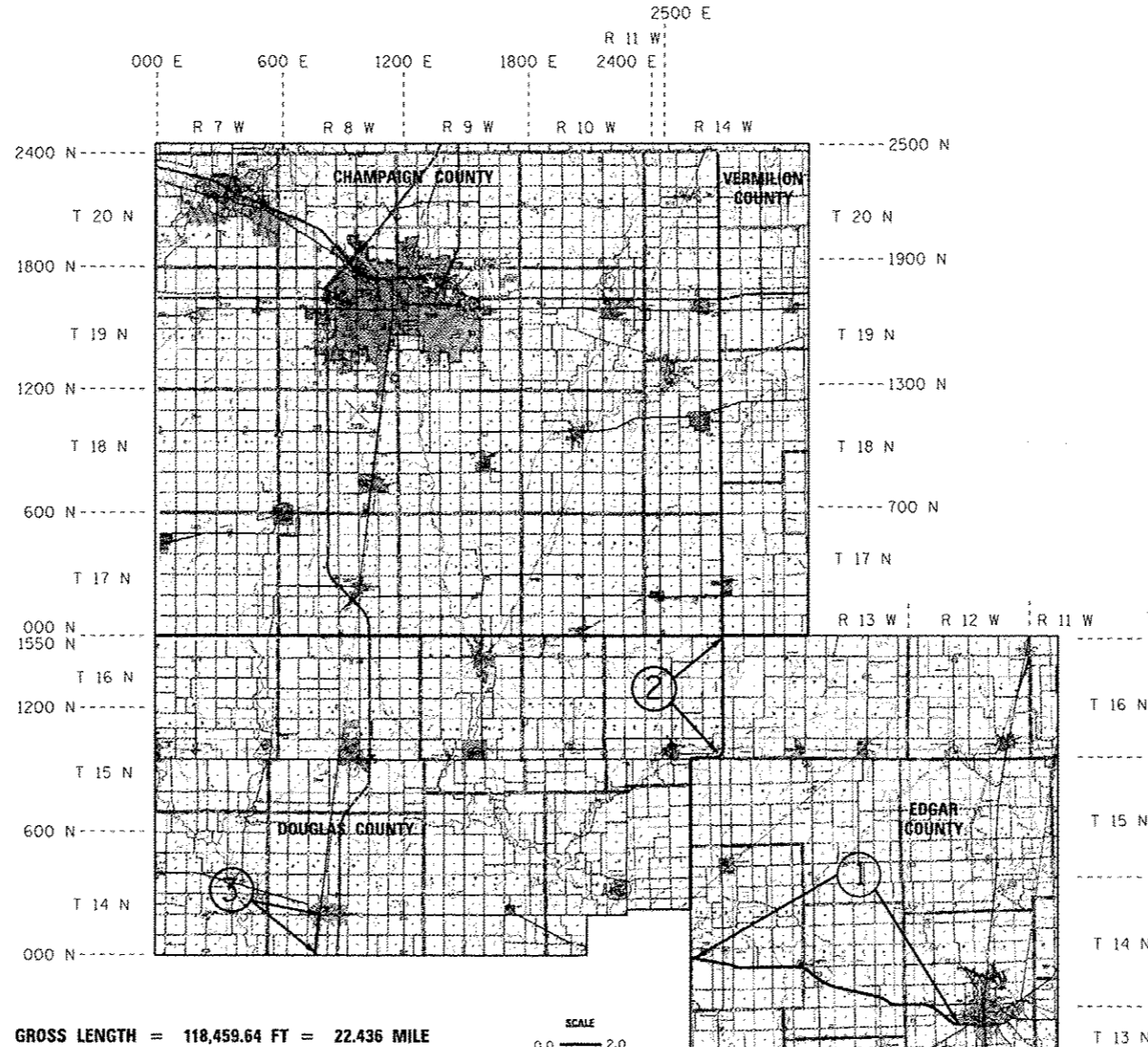
FOR SUMMARY OF QUANTITIES, SEE SHEET NO. 6

CURRENT TRAFFIC DATA

LOCATION #1: F.A.P. RTE. 749 / (IL. 133)
FROM W. EDGE OF PARIS TO EDGAR / COLES COUNTY LINE
AVERAGE ADT = 1,700

LOCATION #2: F.A.P. RTE. 836 / (IL. 49)
FROM U.S. 36 TO CHAMPAIGN COUNTY LINE
AVERAGE ADT = 800

LOCATION #3: F.A.P. RTE. 824 / (U.S. 45)
FROM U.S. 133 IN ARCOLA TO DOUGLAS / COLES COUNTY LINE
AVERAGE ADT = 2,800



FULL SIZE PLANS HAVE BEEN PREPARED USING STANDARD ENGINEERING SCALES. REDUCED SIZED PLANS WILL NOT CONFORM TO STANDARD SCALES. IN MAKING MEASUREMENTS ON REDUCED PLANS, THE ABOVE SCALES MAY BE USED.

J.U.L.I.E.
JOINT UTILITY LOCATION INFORMATION FOR EXCAVATION
1-800-892-0123
OR 811

PROJECT ENGINEER : JASON STULTS
PHONE NUMBER: (217)-465-4181

CONTRACT NO. 70A24

GROSS LENGTH = 118,459.64 FT = 22.436 MILE
NET LENGTH = 117,707.29 FT = 22.293 MILE

SCALE
0.0 — 2.0
MILES

STATE OF ILLINOIS
DEPARTMENT OF TRANSPORTATION
DIVISION OF HIGHWAYS

SUBMITTED MARCH 18 2013
Joseph E. Crowe
DEPUTY DIRECTOR OF HIGHWAYS, REGION ENGINEER/CAT

April 26 2013
John D. Baranzoni, PE
acting ENGINEER OF DESIGN AND ENVIRONMENT

April 26 2013
Omer Osman, PE/BL
DIRECTOR OF HIGHWAYS, CHIEF ENGINEER

**PRINTED BY THE AUTHORITY
OF THE STATE OF ILLINOIS**

INDEX OF SHEETS

SHEET NO.	DESCRIPTION
1	COVER SHEET
2	INDEX OF SHEETS
2	HIGHWAY STANDARDS
2	GENERAL NOTES
3-5	LOCATION MAPS
6	SUMMARY OF QUANTITIES
7-13	TYPICAL CROSS SECTIONS
14	SCHEDULE OF QUANTITIES
15	DETAIL OF AGGREGATE SHOULDER

GENERAL NOTES

G.N.-100
ENGLISH UNITS OF MEASUREMENT SHALL GOVERN OVER AND SUPERSEDE ANY METRIC UNITS SHOWN IN THIS CONTRACT. WHERE INCLUDED, METRIC UNITS ARE FOR INFORMATION ONLY.

G.N.-100A
ELECTRONIC FILES AND/OR ELECTRONIC SURVEY INFORMATION INCLUDING CADD FILES WILL NOT BE AVAILABLE TO THE CONTRACTOR.

G.N.-107.12A
RAILROAD PROTECTIVE LIABILITY INSURANCE IS NOT INCLUDED IN THIS CONTRACT. ALL AGGREGATE SHOULDER OPERATIONS SHALL STOP AT THE RAILROAD RIGHT-OF-WAY LINE UNLESS THE RAILROAD RIGHT-OF-WAY LINE IS LESS THAN 25.0 FEET FROM THE RAILROAD TRACKS, THEN THE AGGREGATE SHOULDER OPERATIONS SHALL STOP 25.0 FEET FROM THE RAILROAD TRACKS. THE RAILROAD RIGHT-OF-WAY SHALL BE DETERMINED IN THE FIELD BY THE RESIDENT ENGINEER.

NO COMMITMENTS

HIGHWAY STANDARDS

STANDARD NUMBER	NAME OF STANDARD
000001-06	STANDARD SYMBOLS, ABBREVIATIONS AND PATTERNS
001006	DECIMAL OF AN INCH AND OF A FOOT
701006-04	OFF-ROAD OPERATIONS, 2L, 2W, 15' (4.5 M) TO 24" (600 MM) FROM PAVEMENT EDGE
701011-03	OFF-ROAD MOVING OPERATIONS, 2L, 2W, DAY ONLY
701301-04	LANE CLOSURE, 2L, 2W, SHORT TIME OPERATIONS
701306-03	LANE CLOSURE, 2L, 2W, SLOW MOVING OPERATIONS DAY ONLY, FOR SPEEDS \geq 45 MPH
701901-02	TRAFFIC CONTROL DEVICES

*SHOULDER REPAIR FY2013-2
** DOUGLAS & EDGAR

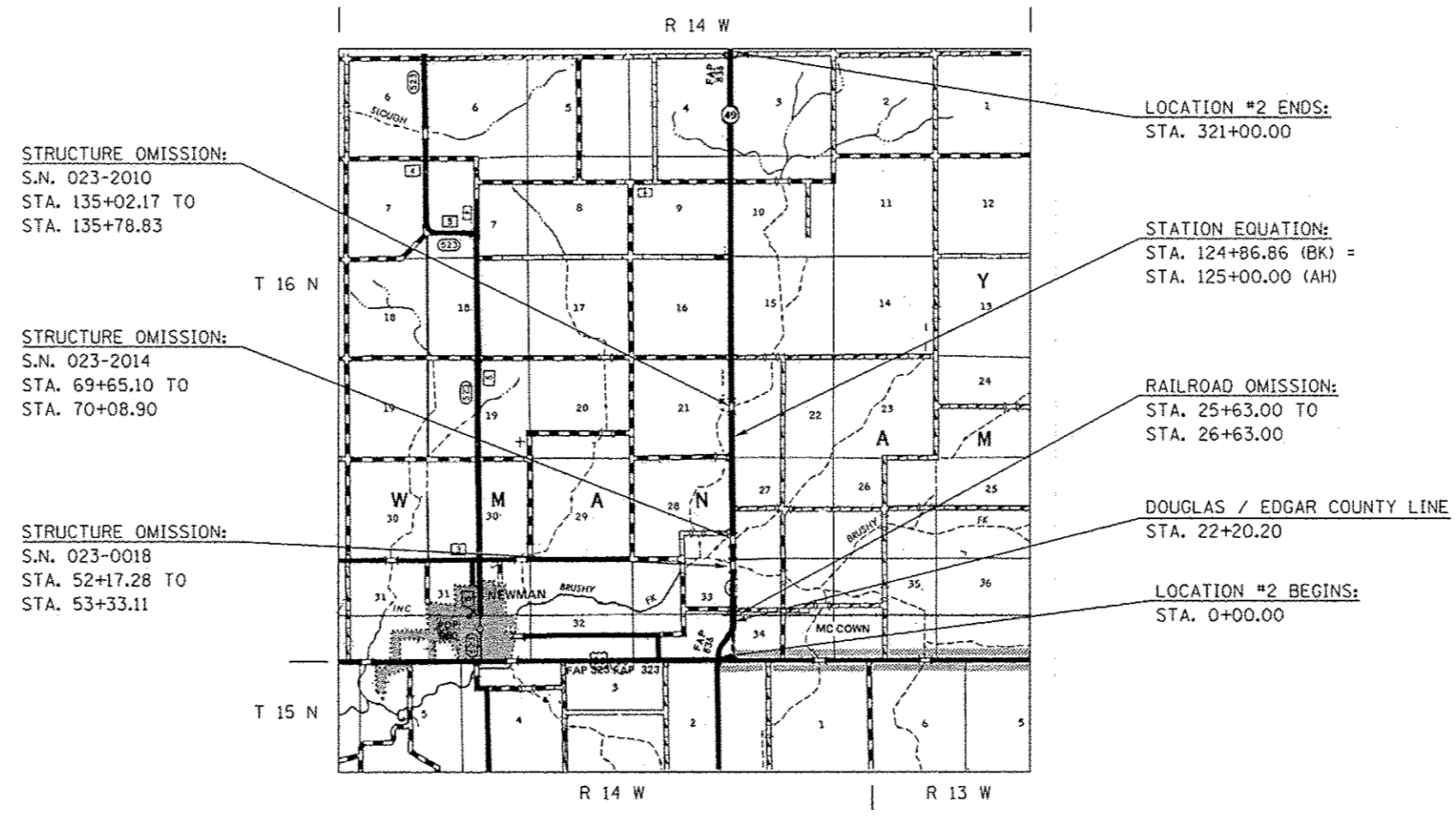
FILE NAME =	USER NAME = ceo-lockjd	DESIGNED -	REVISED -	STATE OF ILLINOIS DEPARTMENT OF TRANSPORTATION	INDEX OF SHEETS, HIGHWAY STANDARDS & GENERAL NOTES	F.A. RTE.	SECTION	COUNTY	TOTAL SHEETS	SHEET NO.	
c:\pwwork\pwwork\ceo-lockjd\0336090	70A24-sh1-0enna.dgn	DRAWN -	REVISED -			VAR.	.	**	15	2	
#MODELNAME#	PLOT SCALE = 48.0000 / 1"	CHECKED -	REVISED -			SCALE: SHEET 1 OF 1 SHEETS STA. TO STA.		CONTRACT NO. 70A24			
	PLOT DATE = 3/20/2013	DATE -	REVISED -			ILLINOIS FED. AID PROJECT					

LOCATON MAP #2

F.A.P. ROUTE 836 (IL. 49)

FROM U.S. 36 TO CHAMPAIGN COUNTY LINE

EDGAR & DOUGLAS COUNTY / RURAL 2 LANE



STRUCTURE OMISSION:
S.N. 023-2010
STA. 135+02.17 TO
STA. 135+78.83

STRUCTURE OMISSION:
S.N. 023-2014
STA. 69+65.10 TO
STA. 70+08.90

STRUCTURE OMISSION:
S.N. 023-0018
STA. 52+17.28 TO
STA. 53+33.11

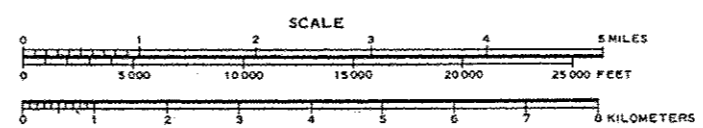
LOCATION #2 ENDS:
STA. 321+00.00

STATION EQUATION:
STA. 124+86.86 (BK) =
STA. 125+00.00 (AH)

RAILROAD OMISSION:
STA. 25+63.00 TO
STA. 26+63.00

DOUGLAS / EDGAR COUNTY LINE
STA. 22+20.20

LOCATION #2 BEGINS:
STA. 0+00.00



TOWNSHIPS:
NEWMAN &
YOUNG AMERICA

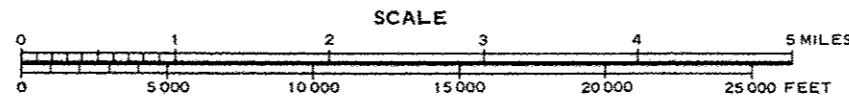
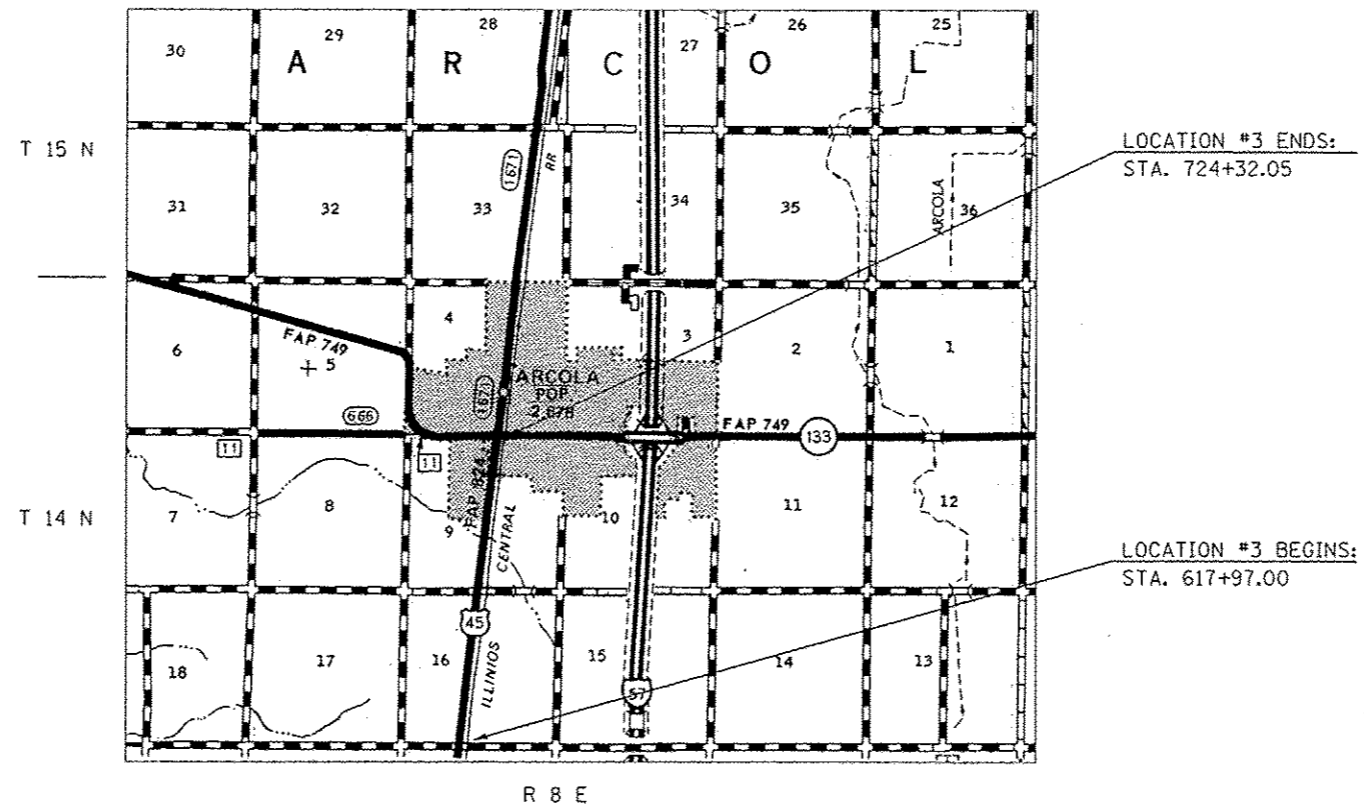


GROSS LENGTH OF LOCATION #2 = 32,086.86 FT = 6.077 MILES
NET LENGTH OF LOCATION #2 = 31,750.57 FT = 6.013 MILES

•SHOULDER REPAIR FY2013-2
** DOUGLAS & EDGAR

FILE NAME : c:\p\work\p\id\l\ceer-lock_jd\0336898\0	USER NAME : ceer-lock_jd	DESIGNED -	REVISED -	STATE OF ILLINOIS DEPARTMENT OF TRANSPORTATION	LOCATION MAP #2 F.A.P. ROUTE 836 (IL. 49)	F.A. RTE. VAR.	SECTION -	COUNTY **	TOTAL SHEETS 15	SHEET NO. 4
#MODELNAME#	PLOT DATE : 3/20/2013	DRAWN -	REVISED -	SCALE: SHEET 1 OF 1 SHEETS STA. TO STA.		CONTRACT NO. 70A24 ILLINOIS FED. AID PROJECT				

LOCATON MAP #3
F.A.P. ROUTE 824 (U.S. 45)
FROM U.S. 133 IN ARCOLA TO DOUGLAS / COLES COUNTY LINE
DOUGLAS COUNTY / RURAL 2 LANE



TOWNSHIPS:
ARCOLA



GROSS LENGTH OF LOCATION #3 = 10,635.05 FT = 2.014 MILES
NET LENGTH OF LOCATION #3 = 10,635.05 FT = 2.014 MILES

*SHOULDER REPAIR FY2013-2
 ** DOUGLAS & EDGAR

FILE NAME *	USER NAME : ceer-lockjd	DESIGNED -	REVISED -	STATE OF ILLINOIS DEPARTMENT OF TRANSPORTATION	LOCATION MAP #3 F.A.P. ROUTE 824 (U.S. 45)	F.A. RTE.	SECTION	COUNTY	TOTAL SHEETS	SHEET NO.	
cr:\p\work\pvidot\ceer-lockjd\0330898\0	70424-shr-Location Map.dgn	DRAWN -	REVISED -			VAR.	-	**	15	5	
	PLOT SCALE : 40.0000' / 1" =	CHECKED -	REVISED -			CONTRACT NO. 70A24					
MODELNAME	PLOT DATE : 3/20/2013	DATE -	REVISED -			ILLINOIS FED. AID PROJECT					

SUMMARY OF QUANTITIES

LOCATION OF WORK:	VARIOUS	VARIOUS	VARIOUS
	ROUTES	ROUTES	ROUTES
	RURAL	RURAL	URBAN
COUNTY:	DOUGLAS	EDGAR	EDGAR
FUNDING BREAKOUT:	100% STATE	100% STATE	100% STATE
	CONTRACT MAINT	CONTRACT MAINT	CONTRACT MAINT
CONSTRUCTION TYPE CODE:	0021	0021	0021

CODE NO	ITEM	UNIT	TOTAL QUANTITY	QUANTITY	QUANTITY	QUANTITY
48101200	AGGREGATE SHOULDERS, TYPE B	TON	7,180.0	772.0	5,970.0	438.0
67100100	MOBILIZATION	L SUM	1.0	0.1	0.8	0.1
70100460	TRAFFIC CONTROL AND PROTECTION, STANDARD 701306	L SUM	1.0	0.1	0.8	0.1

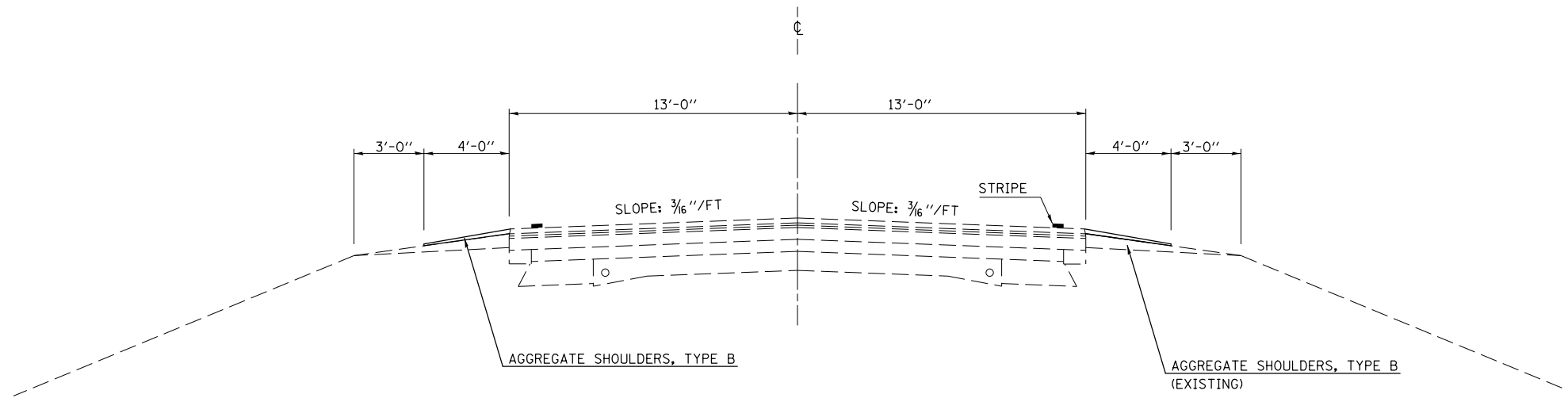
*SHOULDER REPAIR FY2013-2
** DOUGLAS & EDGAR

FILE NAME :	USER NAME : ceerlockjd	DESIGNED -	REVISED -	STATE OF ILLINOIS DEPARTMENT OF TRANSPORTATION	SUMMARY OF QUANTITIES	F.A. RTE.	SECTION	COUNTY	TOTAL SHEETS	SHEET NO.
ca:\pwork\sp\idat\ceerlockjd\40336898\070A24\ent\S00.dgn		DRAWN -	REVISED -			VAR.	*	**	15	6
#MODELNAME#	PLOT SCALE : 48.0000 1/ in.	CHECKED -	REVISED -		SCALE:			CONTRACT NO. 70A24		
	PLOT DATE : 3/20/2013	DATE -	REVISED -		SHEET 1 OF 1 SHEETS	STA.	TO STA.	ILLINOIS FED. AID PROJECT		

LOCATION #1 TYPICAL SECTION ①

F.A.P. ROUTE 749 (IL. 133)

STATION 991+50.50 TO STATION 1059+12.07 ②



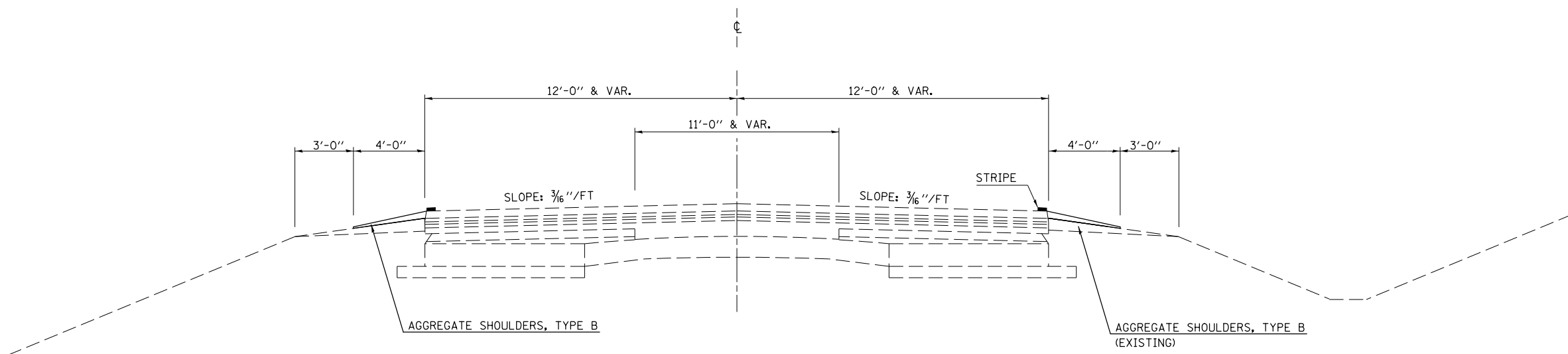
** EXISTING 3 FT. HMA SHOULDER
RT STA 1000+80 TO RT STA 1011+70

STATION EQUATION:
1080+50.00 (BK) = 7+79.47 (AH)

LOCATION #1 TYPICAL SECTION ②

F.A.P. ROUTE 749 (IL. 133)

STATION ① 1059+12.07 TO STATION 1080+50.00 ③



•SHOULDER REPAIR FY2013-2
•• DOUGLAS & EDGAR

FILE NAME =	USER NAME = ceerlockjd	DESIGNED -	REVISED -	STATE OF ILLINOIS DEPARTMENT OF TRANSPORTATION	LOCATION #1 TYPICAL SECTIONS F.A.P. ROUTE 749 (IL. 133)			F.A. RTE.	SECTION	COUNTY	TOTAL SHEETS	SHEET NO.
ci:\pwork\pwork\ceerlockjd\0336898\0570A24-Sht-Typic01.dgn		DRAWN -	REVISED -		SCALE:	SHEET 1	OF 3 SHEETS	STA.	TO STA.	**	15	7
	PLOT SCALE = 40.0000' / in.	CHECKED -	REVISED -									
#MODELNAME#	PLOT DATE = 3/20/2013	DATE -	REVISED -									
										CONTRACT NO. 70A24		
										ILLINOIS FED. AID PROJECT		

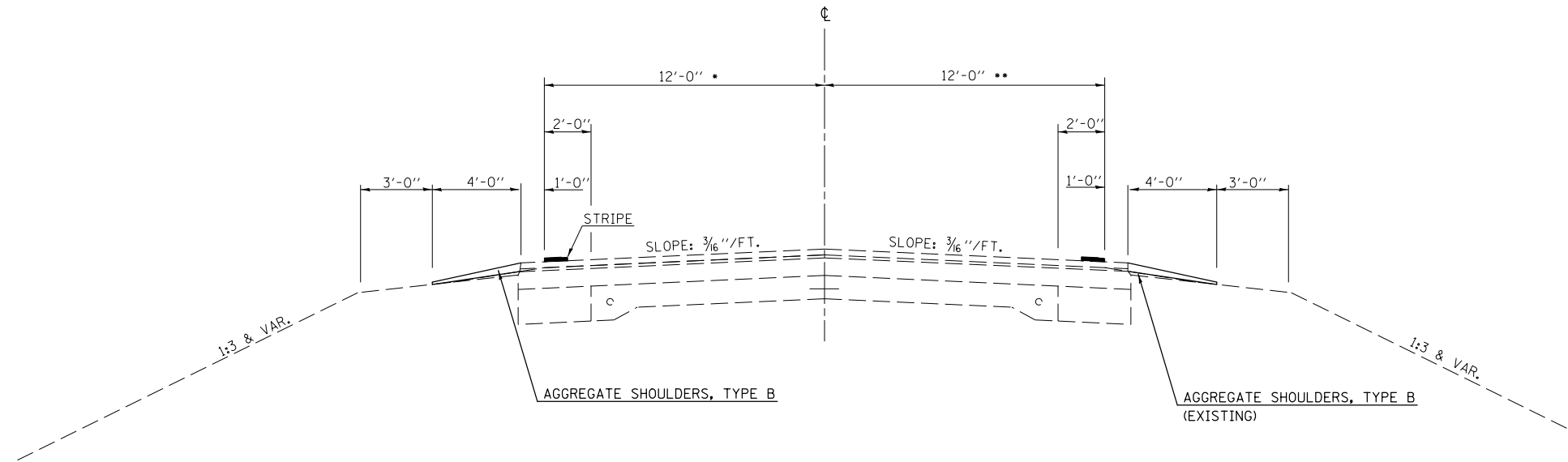
STATION EQUATION:
 1080+50.00 (BK) = 7+79.47 (AH)

LOCATION #1 TYPICAL SECTION ③

F.A.P. ROUTE 749 (IL. 133)

STATION ② 7+79.47 TO STATION ④ 190+64.20

STRUCTURE OMISSION:
 S. N. 023-0015
 STA. 158+35.80 TO STA. 161+82.20



- 7+79.47 LT TO 15+39.71 (BK) LT VARIES 18' TO 12'
- 7+79.47 RT TO 9+90.61 RT VARIES 13' TO 12'

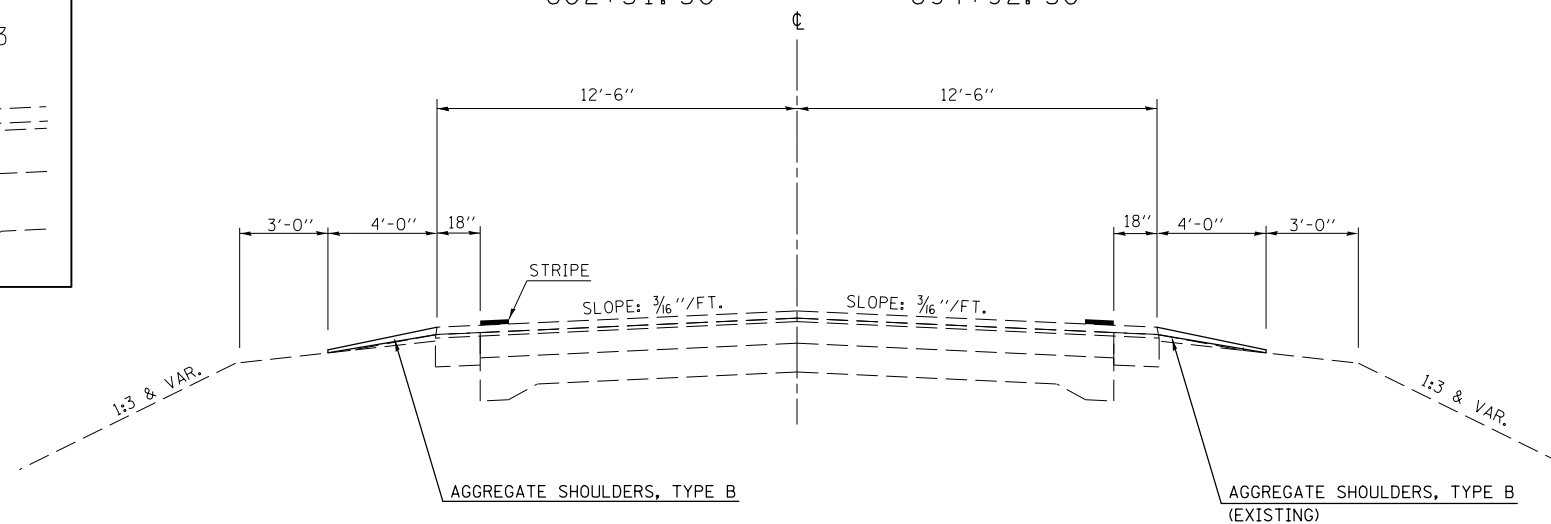
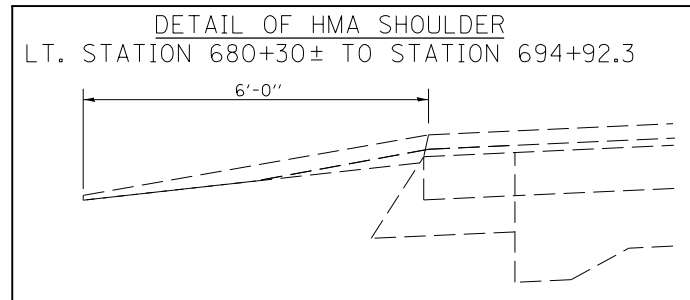
STATION EQUATIONS:
 312+20.70 (BK) = 309+71.20 (AH)
 581+27.40 (BK) = 602+51.50 (AH)

LOCATION #1 TYPICAL SECTION ④

F.A.P. ROUTE 749 (IL. 133)

STATION ③ 190+64.20 TO STATION ⑤ 244+00.00
 ⑤ 247+00.00 TO STATION ⑤ 312+20.70
 309+71.20 TO STATION ⑤ 581+27.40
 602+51.50 TO STATION ⑤ 694+92.30

STRUCTURE OMISSION:
 S. N. 023-0034
 STA. 417+80.00 TO STA. 418+50.00



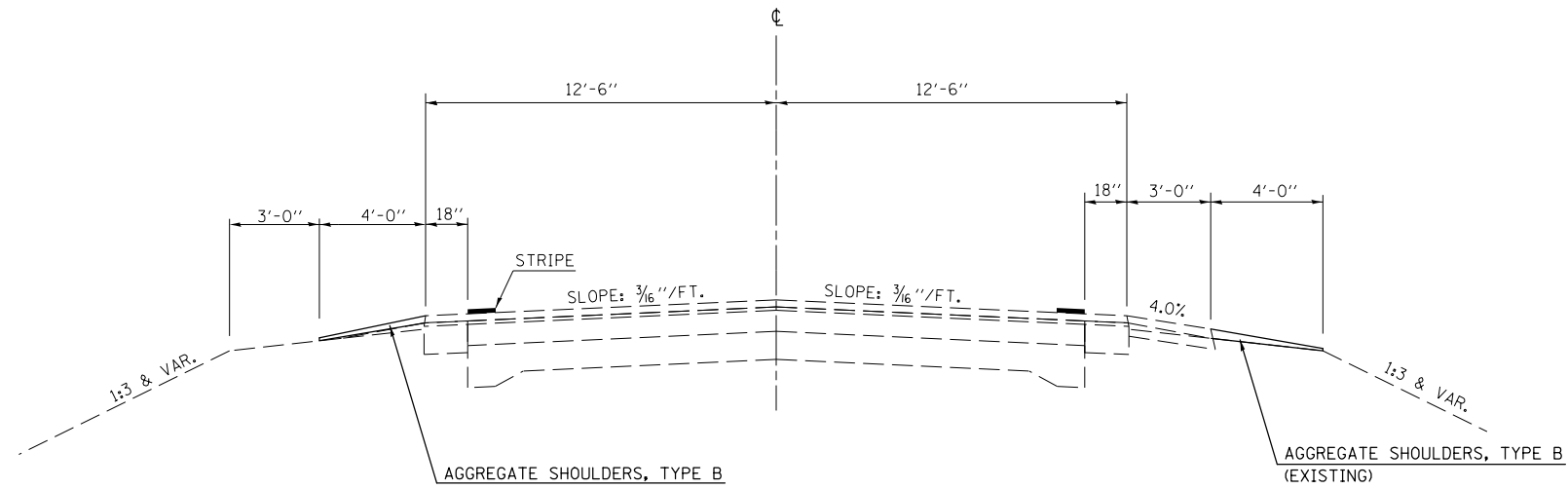
- SHOULDER REPAIR FY2013-2
- DOUGLAS & EDGAR

FILE NAME =	USER NAME = ceorlockjd	DESIGNED -	REVISED -	STATE OF ILLINOIS DEPARTMENT OF TRANSPORTATION	LOCATION #1 TYPICAL SECTIONS F.A.P. ROUTE 749 (IL. 133)			F.A. RTE.	SECTION	COUNTY	TOTAL SHEETS	SHEET NO.
ei:\pwork\work\pwork\ceorlockjd\0336898\0570A24-Sht-Typical.dgn		DRAWN -	REVISED -		VAR.	•	••	15	8			
	PLOT SCALE = 40.0000' / in.	CHECKED -	REVISED -		SCALE: SHEET 2 OF 3 SHEETS STA. TO STA.			CONTRACT NO. 70A24				
#MODELNAME#	PLOT DATE = 3/20/2013	DATE -	REVISED -		ILLINOIS FED. AID PROJECT							

LOCATION #1 TYPICAL SECTION ⑤

F.A.P. ROUTE 749 (IL. 133)

STATION ④ 244+00.00 TO STATION 247+00.00 ④



•SHOULDER REPAIR FY2013-2
 •• DOUGLAS & EDGAR

FILE NAME =	USER NAME = ceerlockjd	DESIGNED -	REVISED -
ei:\pwork\pwork\ceerlockjd\0336898\0570A24-Sht-Typical.dgn		DRAWN -	REVISED -
	PLOT SCALE = 40.0000' / in.	CHECKED -	REVISED -
#MODELNAME#	PLOT DATE = 3/20/2013	DATE -	REVISED -

STATE OF ILLINOIS
 DEPARTMENT OF TRANSPORTATION

LOCATION #1 TYPICAL SECTIONS
 F.A.P. ROUTE 749 (IL. 133)

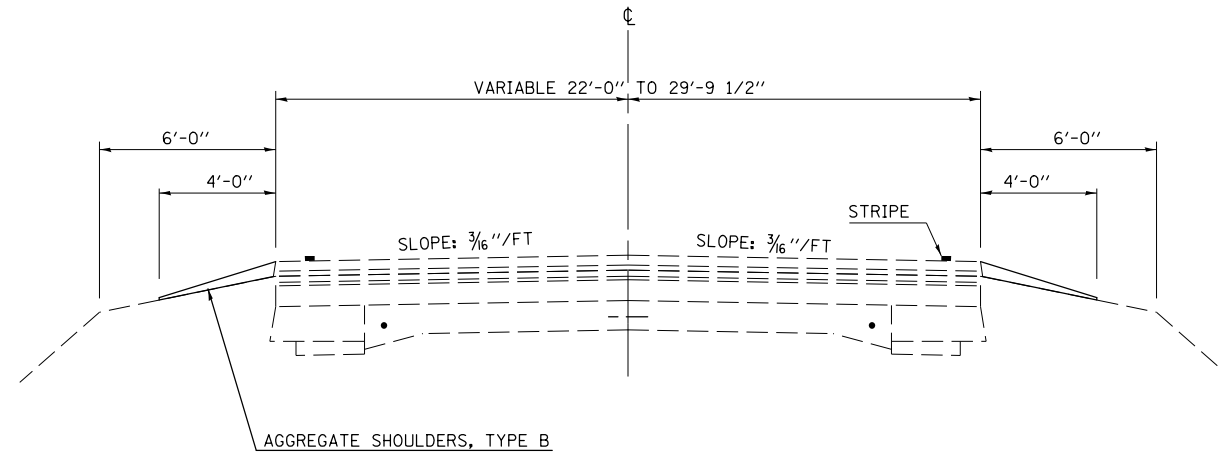
SCALE: SHEET 3 OF 3 SHEETS STA. TO STA.

F.A. RTE.	SECTION	COUNTY	TOTAL SHEETS	SHEET NO.
VAR.	*	**	15	9
			CONTRACT NO. 70A24	
ILLINOIS FED. AID PROJECT				

LOCATION #2 TYPICAL SECTION ①

F.A.P. ROUTE 836 (IL. 49)

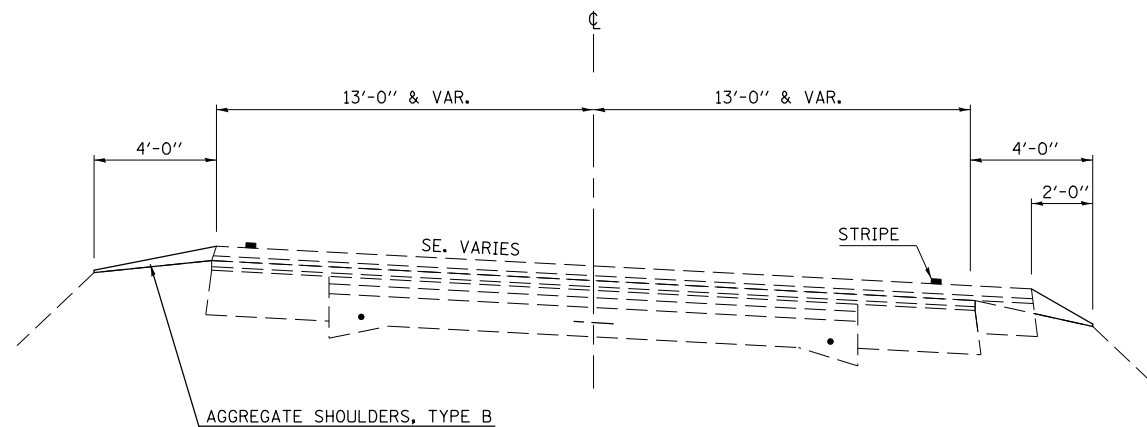
STATION TO STATION
0+00.00 4+30.00 ②



LOCATION #2 TYPICAL SECTION ②

F.A.P. ROUTE 836 (IL. 49)

STATION TO STATION
① 4+30.00 9+67.10 ③



•SHOULDER REPAIR FY2013-2
•• DOUGLAS & EDGAR

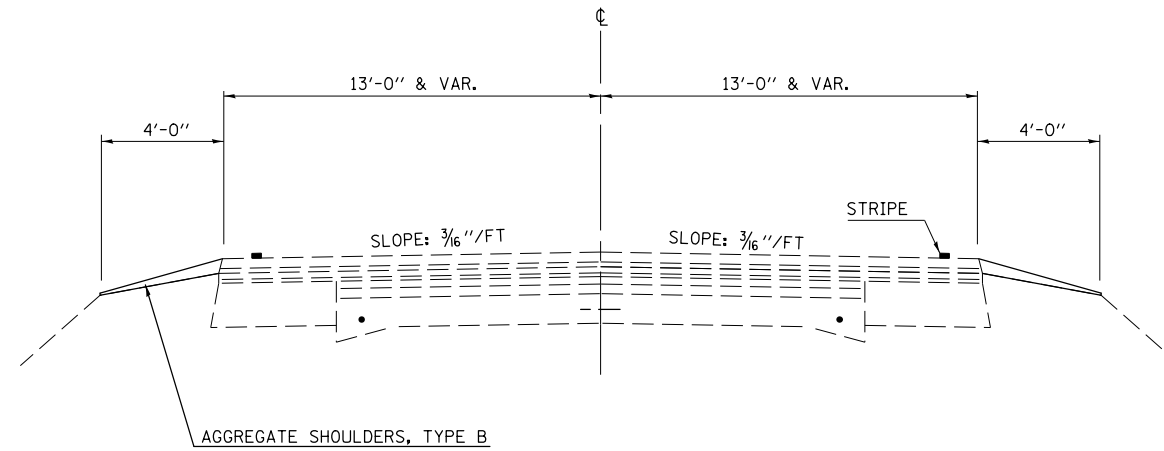
FILE NAME =	USER NAME = ceerlockjd	DESIGNED -	REVISED -	STATE OF ILLINOIS DEPARTMENT OF TRANSPORTATION	LOCATION #2 TYPICAL SECTIONS F.A.P. ROUTE 836 (IL. 49)			F.A. RTE.	SECTION	COUNTY	TOTAL SHEETS	SHEET NO.	
	ci:\pwork\pwork\ceerlockjd\0336898\0570A24-Sht-Typical.dgn	DRAWN -	REVISED -		SCALE:	SHEET 1	OF 3	SHEETS	STA.	TO STA.	••	15	10
	PLOT SCALE = 40.0000' / in.	CHECKED -	REVISED -		CONTRACT NO. 70A24								
#MODELNAME#	PLOT DATE = 3/20/2013	DATE -	REVISED -		ILLINOIS FED. AID PROJECT								

LOCATION #2 TYPICAL SECTION ③

F.A.P. ROUTE 836 (IL. 49)

RAILROAD OMISSION:
STA. 25+63.00 TO STA. 26+63.00

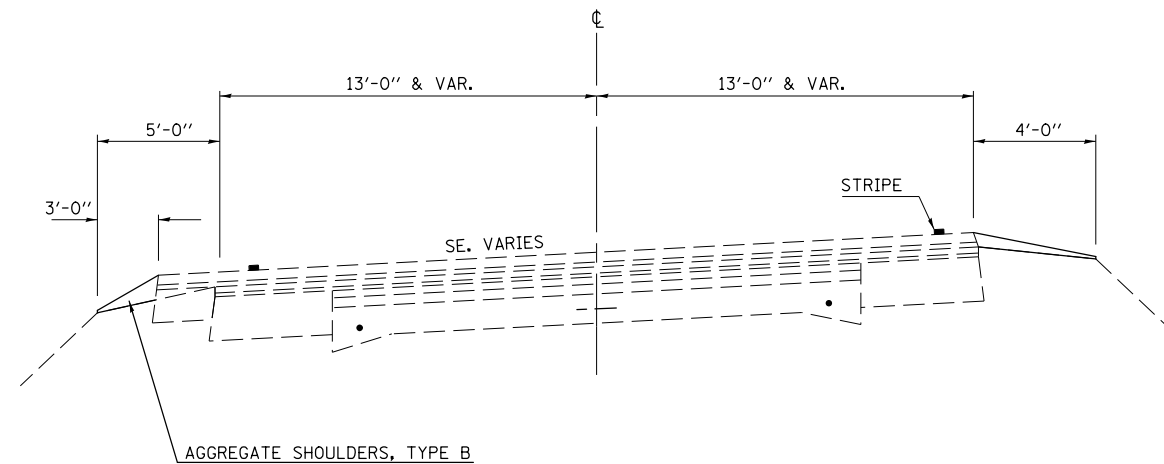
STATION	TO	STATION
② 9+67.10		14+52.30 ④
④ 22+20.20		26+05.00 ⑤



LOCATION #2 TYPICAL SECTION ④

F.A.P. ROUTE 836 (IL. 49)

STATION	TO	STATION
③ 14+52.30		22+20.20 ③



•SHOULDER REPAIR FY2013-2
•• DOUGLAS & EDGAR

FILE NAME =	USER NAME = ceerlockjd	DESIGNED -	REVISED -	STATE OF ILLINOIS DEPARTMENT OF TRANSPORTATION	LOCATION #2 TYPICAL SECTIONS F.A.P. ROUTE 836 (IL. 49)			F.A. RTE.	SECTION	COUNTY	TOTAL SHEETS	SHEET NO.	
ci:\pwork\pwork\ceerlockjd\0336898\0570A24-Sht-Typical.dgn		DRAWN -	REVISED -		SCALE:	SHEET 2	OF 3	SHEETS	STA.	TO STA.	••	15	11
#MODELNAME#	PLOT SCALE = 40.0000' / in.	CHECKED -	REVISED -								CONTRACT NO. 70A24		
	PLOT DATE = 3/20/2013	DATE -	REVISED -								ILLINOIS FED. AID PROJECT		

LOCATION #2 TYPICAL SECTION ⑤

F.A.P. ROUTE 836 (IL. 49)

STATION TO STATION
 ③ 26+05.00 321+00.00

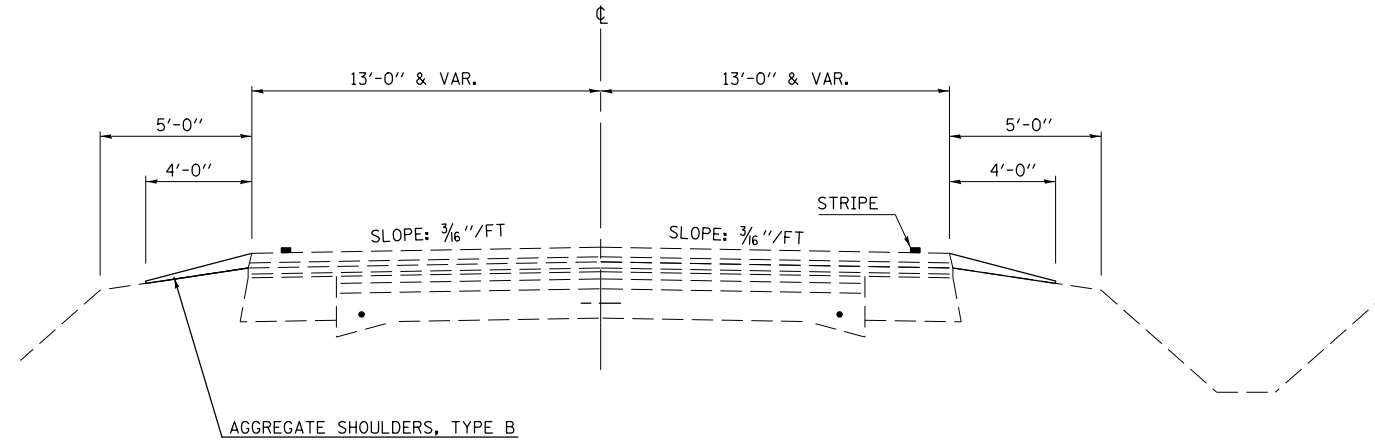
STATION EQUATION:
 124+86.86 (BK) = 125+00.00 (AH)

STRUCTURE OMISSION:

S. N. 023-0018
 STA. 52+17.28 TO STA. 53+33.11
 S. N. 023-2014
 STA. 69+65.10 TO STA. 70+08.90
 S. N. 023-2010
 STA. 135+02.17 TO STA. 135+78.83

RAILROAD OMISSION:

STA. 25+63.00 TO STA. 26+63.00



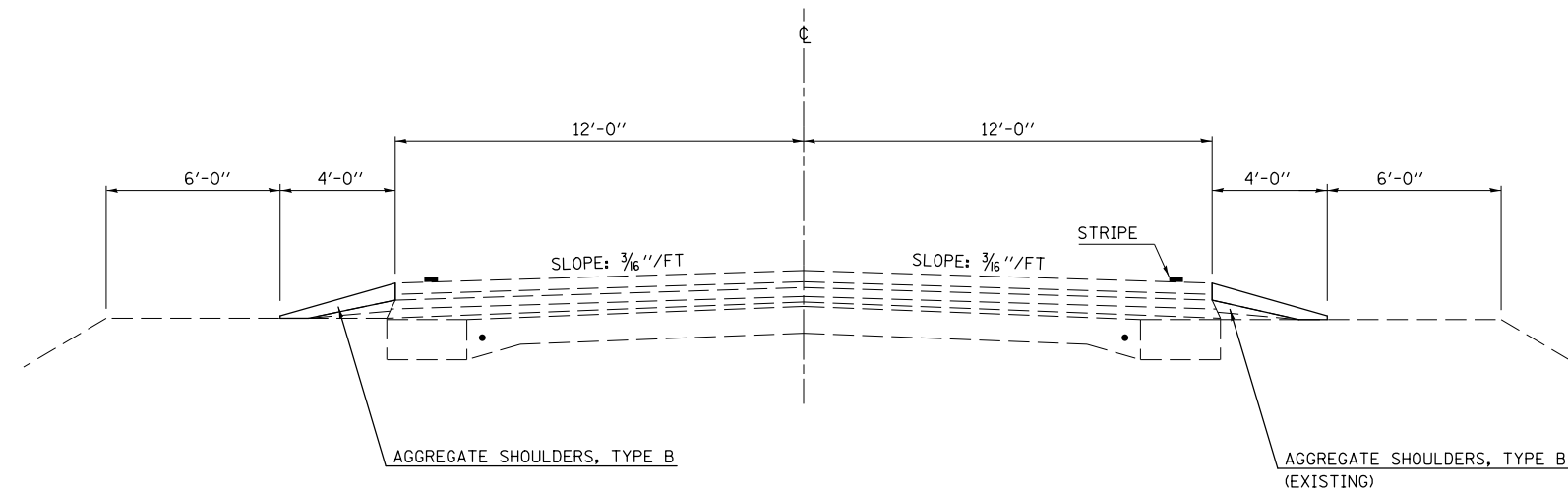
•SHOULDER REPAIR FY2013-2
 •• DOUGLAS & EDGAR

FILE NAME =	USER NAME = ceerlockjd	DESIGNED -	REVISED -	STATE OF ILLINOIS DEPARTMENT OF TRANSPORTATION	LOCATION #2 TYPICAL SECTIONS F.A.P. ROUTE 836 (IL. 49)			F.A. RTE.	SECTION	COUNTY	TOTAL SHEETS	SHEET NO.
ei:\pwork\work\pwork\ceerlockjd\0336898\0570A24-Sht-Typical.dgn		DRAWN -	REVISED -		VAR.	.	**	15	12			
	PLOT SCALE = 40.0000' / in.	CHECKED -	REVISED -		SCALE: SHEET 3 OF 3 SHEETS STA. TO STA.			CONTRACT NO. 70A24				
#MODELNAME#	PLOT DATE = 3/20/2013	DATE -	REVISED -		ILLINOIS FED. AID PROJECT							

LOCATION #3 TYPICAL SECTION ①

F.A.P. ROUTE 824 (U.S. 45)

STATION TO STATION
617+97.00 724+32.05



•SHOULDER REPAIR FY2013-2
•• DOUGLAS & EDGAR

FILE NAME =	USER NAME = ceerlockjd	DESIGNED -	REVISED -	STATE OF ILLINOIS DEPARTMENT OF TRANSPORTATION	LOCATION #3 TYPICAL SECTION F.A.P. ROUTE 824 (U.S. 45)	F.A. RTE.	SECTION	COUNTY	TOTAL SHEETS	SHEET NO.	
ci:\pwork\work\pwork\ceerlockjd\0336898\0570A24-Sht-Typical.dgn		DRAWN -	REVISED -			VAR.	.	••	15	13	
#MODELNAME#	PLOT SCALE = 40.0000' / in.	CHECKED -	REVISED -			SCALE:		SHEET 1 OF 1 SHEETS		STA. TO STA.	
	PLOT DATE = 3/20/2013	DATE -	REVISED -			ILLINOIS FED. AID PROJECT CONTRACT NO. 70A24					

SCHEDULE OF QUANTITIES

48101200 AGGREGATE SHOULDERS, TYPE B
LOCATION #1 / F.A.P. RTE. 749 (IL. 133)
EDGAR COUNTY

LOCATION	STATION	TO	STATION	LENGTH (FT)	WIDTH (FT)	AVE. DEPTH (INCH)	QUANTITY (TON)
RT. SHOULDER	991+50.00		1059+12.07	6762.07	4.00	1.375	206.62
RT. SHOULDER	1059+12.07		1080+50.00 (BK)	2137.93	4.00	1.375	65.33
RT. SHOULDER	7+79.47 (AH)		158+35.80	15056.33	4.00	1.375	460.05
RT. SHOULDER	161+82.20		190+64.20	2882.00	4.00	1.375	88.06
RT. SHOULDER	190+64.20		244+00.00	5335.80	4.00	1.375	163.04
RT. SHOULDER	244+00.00		247+00.00	300.00	4.00	1.375	9.17
RT. SHOULDER	247+00.00		312+20.70 (BK)	6520.70	4.00	1.375	199.24
RT. SHOULDER	309+71.20 (AH)		417+80.00	10808.80	4.00	1.375	330.27
RT. SHOULDER	418+50.00		581+27.40 (BK)	16277.40	4.00	1.375	497.37
RT. SHOULDER	602+51.50 (AH)		623+25.00	2073.50	4.00	1.375	63.36
RT. SHOULDER	623+25.00		694+92.30	7167.30	4.00	1.375	219.00
LT. SHOULDER	991+50.00		1059+12.07	6762.07	4.00	1.375	206.62
LT. SHOULDER	1059+12.07		1080+50.00 (BK)	2137.93	4.00	1.375	65.33
LT. SHOULDER	7+79.47 (AH)		158+35.80	15056.33	4.00	1.375	460.05
LT. SHOULDER	161+82.20		190+64.20	2882.00	4.00	1.375	88.06
LT. SHOULDER	190+64.20		244+00.00	5335.80	4.00	1.375	163.04
LT. SHOULDER	244+00.00		247+00.00	300.00	4.00	1.375	9.17
LT. SHOULDER	247+00.00		312+20.70 (BK)	6520.70	4.00	1.375	199.24
LT. SHOULDER	309+71.20 (AH)		417+80.00	10808.80	4.00	1.375	330.27
LT. SHOULDER	418+50.00		581+27.40 (BK)	16277.40	4.00	1.375	497.37
LT. SHOULDER	602+51.50 (AH)		623+25.00	2073.50	4.00	1.375	63.36
LT. SHOULDER	623+25.00		694+92.30	7167.30	4.00	1.375	219.00
TOTAL =							4603.00 TON
USE =							4603.00 TON
RURAL =							4165.00 TON
URBAN =							438.00 TON

48101200 AGGREGATE SHOULDERS, TYPE B
LOCATION #2 / F.A.P. RTE. 836 (IL. 49)
DOUGLAS & EDGAR COUNTY

LOCATION	STATION	TO	STATION	LENGTH (FT)	WIDTH (FT)	AVE. DEPTH (INCH)	QUANTITY (TON)
RT. SHOULDER	0+00.00		4+30.00	430.00	4.00	1.375	13.14
RT. SHOULDER	4+30.00		9+67.10	537.10	2.00	1.375	8.21
RT. SHOULDER	9+67.10		14+52.30	485.20	4.00	1.375	14.83
RT. SHOULDER	14+52.30		22+20.20	767.90	4.00	1.375	23.46
RT. SHOULDER	22+20.20		25+63.00	342.80	4.00	1.375	10.47
RT. SHOULDER	26+63.00		52+17.28	2554.28	4.00	1.375	78.05
RT. SHOULDER	53+33.11		69+65.10	1631.99	4.00	1.375	49.87
RT. SHOULDER	70+08.90		124+86.86 (BK)	5477.96	4.00	1.375	167.38
RT. SHOULDER	125+00.00 (AH)		135+02.17	1002.17	4.00	1.375	30.62
RT. SHOULDER	135+78.83		321+00.00	18521.17	4.00	1.375	565.92
LT. SHOULDER	0+00.00		4+30.00	430.00	4.00	1.375	13.14
LT. SHOULDER	4+30.00		9+67.10	537.10	4.00	1.375	16.41
LT. SHOULDER	9+67.10		14+52.30	485.20	4.00	1.375	14.83
LT. SHOULDER	14+52.30		22+20.20	767.90	3.00	1.375	17.60
LT. SHOULDER	22+20.20		25+63.00	342.80	4.00	1.375	10.47
LT. SHOULDER	26+63.00		52+17.28	2554.28	4.00	1.375	78.05
LT. SHOULDER	53+33.11		69+65.10	1631.99	4.00	1.375	49.87
LT. SHOULDER	70+08.90		124+86.86 (BK)	5477.96	4.00	1.375	167.38
LT. SHOULDER	125+00.00 (AH)		135+02.17	1002.17	4.00	1.375	30.62
LT. SHOULDER	135+78.83		321+00.00	18521.17	4.00	1.375	565.92
TOTAL =							1926.24 TON
USE =							1927.00 TON
DOUGLAS COUNTY =							122.00 TON
EDGAR COUNTY =							1805.00 TON

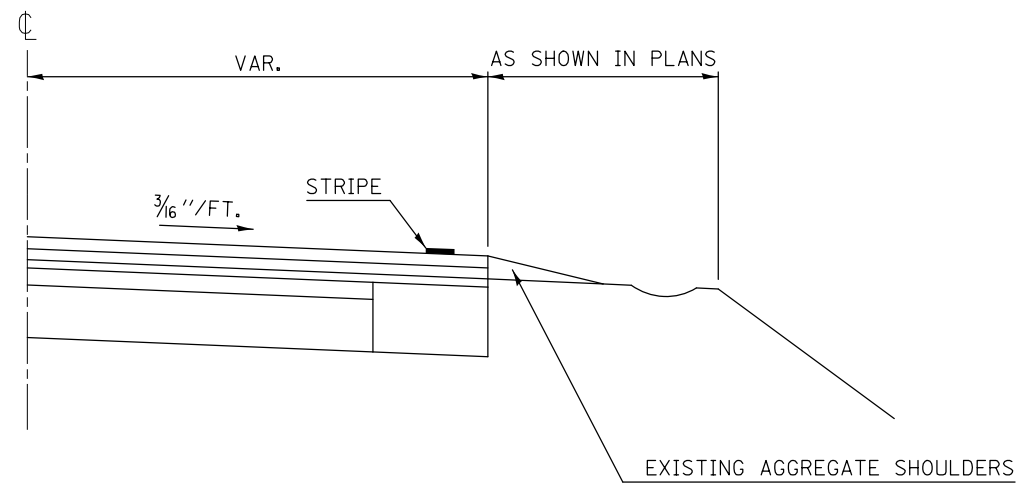
48101200 AGGREGATE SHOULDERS, TYPE B
LOCATION #3 / F.A.P. RTE. 824 (U.S. 45)
DOUGLAS COUNTY

LOCATION	STATION	TO	STATION	LENGTH (FT)	WIDTH (FT)	AVE. DEPTH (INCH)	QUANTITY (TON)
RT. SHOULDER	617+97.00		724+32.05	10635.05	4.00	1.375	324.96
LT. SHOULDER	617+97.00		724+32.05	10635.05	4.00	1.375	324.96
TOTAL =							649.92 TON
USE =							650.00 TON

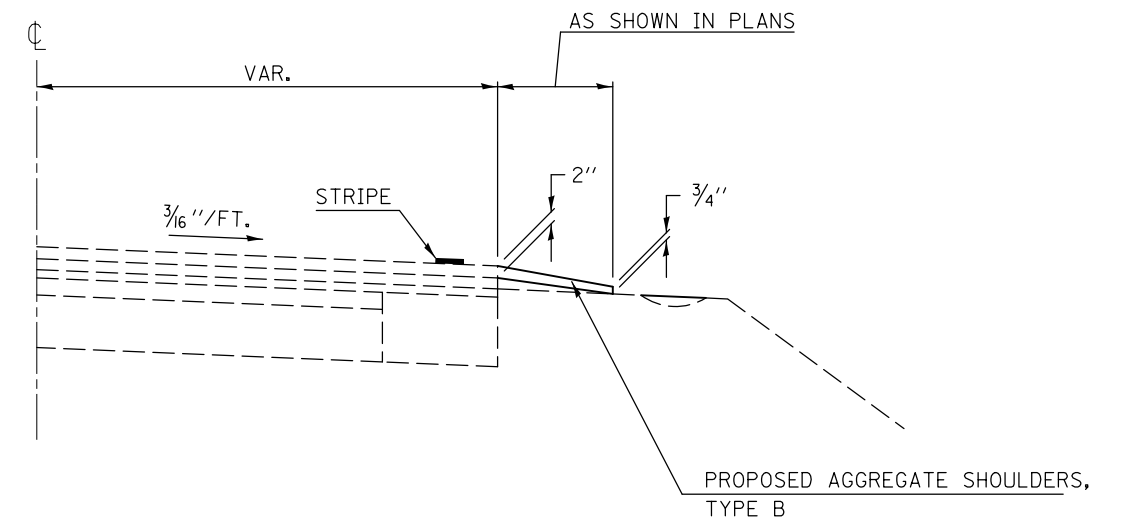
•SHOULDER REPAIR FY2013-2
 ** DOUGLAS & EDGAR

DETAIL OF AGGREGATE SHOULDER

EXISTING SHOULDER



PROPOSED SHOULDER



•SHOULDER REPAIR FY2013-2
•• DOUGLAS & EDGAR

FILE NAME =	USER NAME = ceerlockjd	DESIGNED -	REVISED -
ci:\pwork\pwork\ceerlockjd\0336898\0570A24-sht-Details.dgn		DRAWN -	REVISED -
	PLOT SCALE = 40.0000' / in.	CHECKED -	REVISED -
MODELNAME	PLOT DATE = 3/20/2013	DATE -	REVISED -

**STATE OF ILLINOIS
DEPARTMENT OF TRANSPORTATION**

DETAIL OF AGGREGATE SHOULDER

SCALE: SHEET OF SHEETS STA. TO STA.

F.A. RTE.	SECTION	COUNTY	TOTAL SHEETS	SHEET NO.
VAR.	•	••	15	15
CONTRACT NO. 70A24			ILLINOIS FED. AID PROJECT	