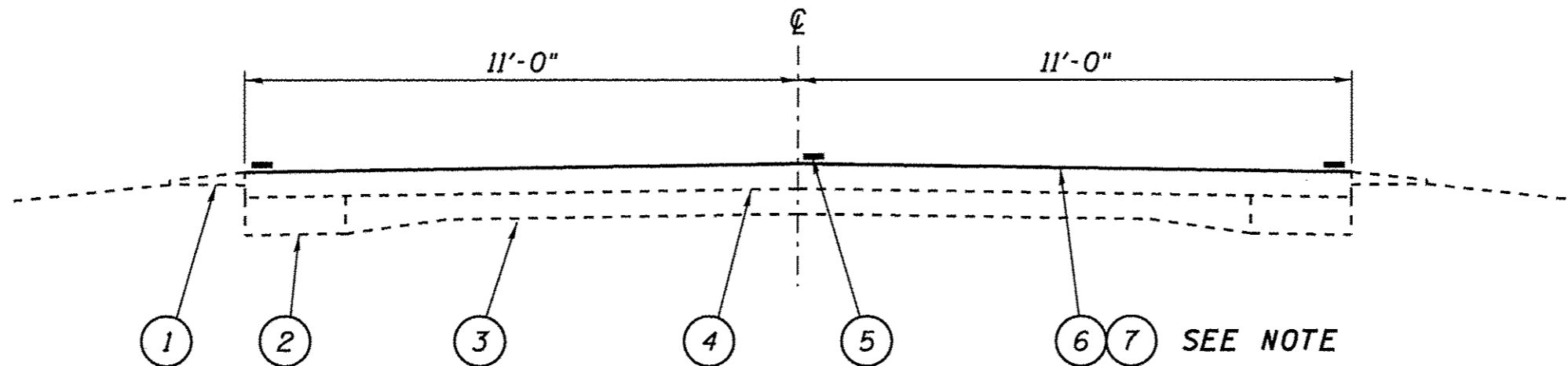


7700 P.S. 4/8/81



STA. 83+19.00 TO 705+36.00
 STA. EQ. 0+00bk=633+60ch

LEGEND

- 1 - EXIST. AGG. SHOULDER
- 2 - EXIST. WIDENING
- 3 - EXIST. P.C.C. PAVEMENT
- 4 - EXIST. H.M.A. SURFACE
- 5 - PROP. PAINT PAVEMENT MARKING - LINE 5"
- 6 - PROP. CAPE SEAL
- 7 - PROP. MICRO-SURFACING

NOTE:

STA. 83+19 TO STA. 640+15 IS CAPE SEAL
 STA. 640+15 TO 705+36 IS MICRO-SURFACING

FILE NAME *	USER NAME * #USERS*	DESIGNED - ___	REVISED - ___	STATE OF ILLINOIS DEPARTMENT OF TRANSPORTATION	TYPICAL SECTION		F.A.S. RTE.	SECTION	COUNTY	TOTAL SHEETS	SHEET NO.	
#FILE#*		DRAWN - ___	REVISED - ___		SCALE: _____	SHEET 1 OF 1 SHEETS	STA. _____ TO STA. _____	1613	Q3D1-3	ANGAMON	4	4
SHT. PLAN		CHECKED - ___	REVISED - ___					CONTRACT NO. 72015				
		DATE - ___	REVISED - ___					ILLINOIS FED. AID PROJECT				