

STATE OF ILLINOIS
 DEPARTMENT OF TRANSPORTATION
 DIVISION OF HIGHWAYS

**PROPOSED
 HIGHWAY PLANS**

F.A.P. RTES. 322 & 714 (OLD U.S. BUS. RTE. 51 & IL. RTE. 105)
 SECTION D7 BRIDGE PAINTING 2013-4

**BRIDGE PAINTING
 MACON COUNTY**
 C-97-053-13

F.A.P. RTES. 322 714	SECTION .	COUNTY MACON	TOTAL SHEETS 9	SHEET NO. 1
ILLINOIS			CONTRACT NO. 74613	

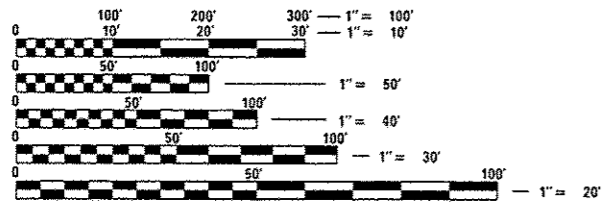
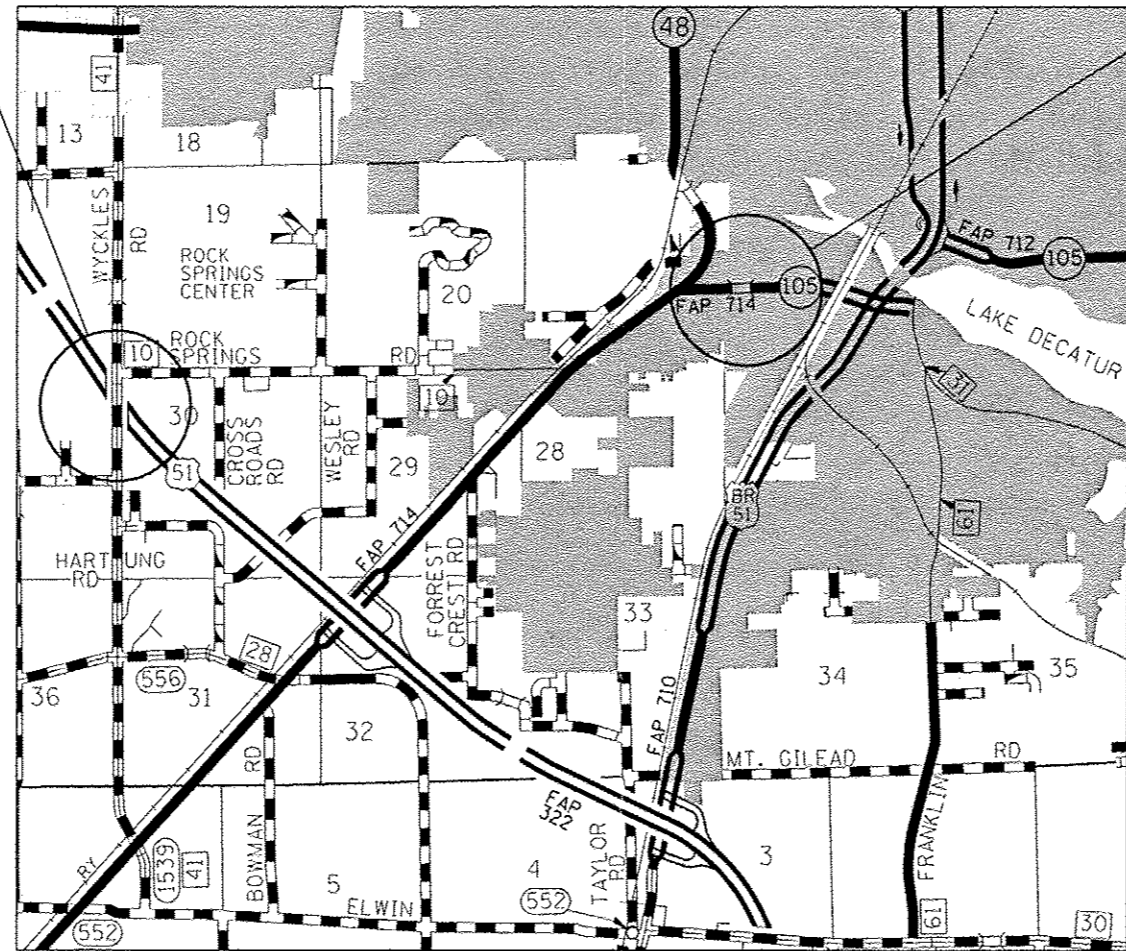
D7 BRIDGE PAINTING 2013-4
 ** 9+5=14
 D-97-012-13

FOR INDEX OF SHEETS, SEE SHEET NO. 2



LOCATION 1
 STA. 312 + 43.08
 S.N. 058-0103

LOCATION 2
 STA. 116 + 30.00
 S.N. 058-0112



FULL SIZE PLANS HAVE BEEN PREPARED USING STANDARD ENGINEERING SCALES. REDUCED SIZED PLANS WILL NOT CONFORM TO STANDARD SCALES. IN MAKING MEASUREMENTS ON REDUCED PLANS, THE ABOVE SCALES MAY BE USED.

J.U.L.I.E.
 JOINT UTILITY LOCATION INFORMATION FOR EXCAVATION
 1-800-892-0123
 OR 811

PROJECT ENGINEER: TOM RONAN
 PROJECT MANAGER: TOM RONAN
 PHONE: (217)-342-8320
 CONTRACT NO. 74613

STATE OF ILLINOIS
 DEPARTMENT OF TRANSPORTATION
 DIVISION OF HIGHWAYS

SUBMITTED MARCH 20 20 13
Roger L. Oriskany
 DEPUTY DIRECTOR OF HIGHWAYS, REGION ENGINEER

April 26 20 13
John D. Baranzelli, P.E.
 acting ENGINEER OF DESIGN AND ENVIRONMENT

April 26 20 13
Omer Osman, P.E.
 DIRECTOR OF HIGHWAYS, CHIEF ENGINEER

**PRINTED BY THE AUTHORITY
 OF THE STATE OF ILLINOIS**