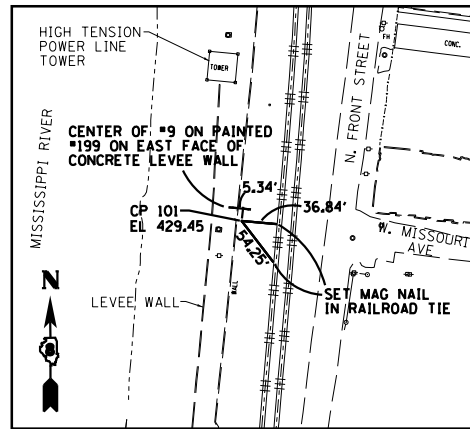


CONTROL POINT #100

FOUND IRON ROD WITH IDOT CAP
FLUSH WITH GROUND

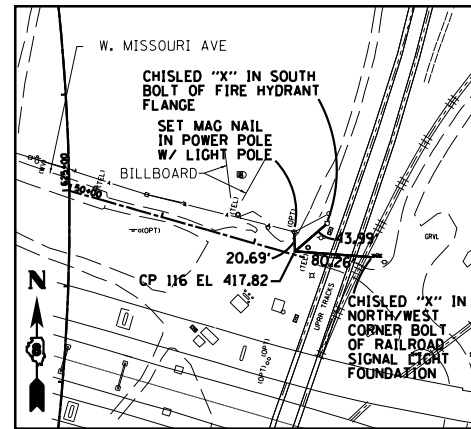
N 14045283.692
E 2451478.950
EL 409.23



CONTROL POINT #101

FOUND IRON PIN WITH IDOT CAP
FLUSH WITH GROUND

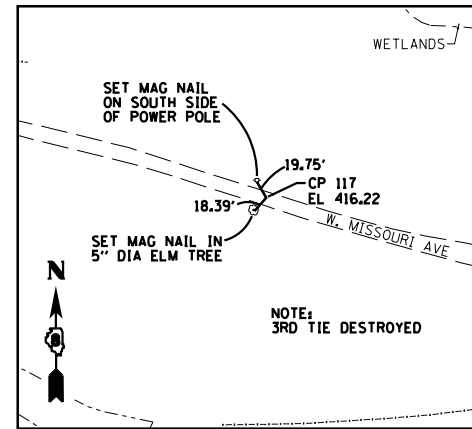
N 14041174.100
E 2447288.901
EL 429.45



CONTROL POINT #116

FOUND IRON PIN WITH IDOT CAP
FLUSH WITH GROUND

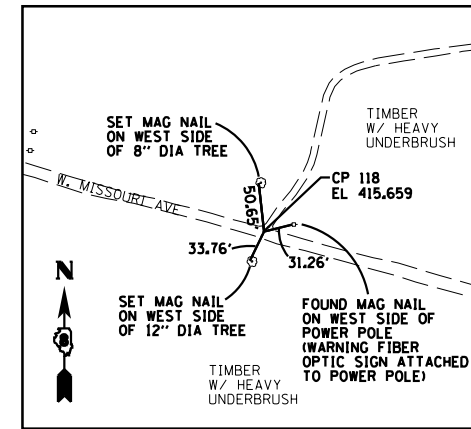
N 14040412.250
E 2450497.479
EL 417.82



CONTROL POINT #117

FOUND IRON PIN WITH IDOT CAP
FLUSH WITH GROUND

N 14040721.310
E 2449459.781
EL 416.22



CONTROL POINT #118

FOUND IRON PIN WITH IDOT CAP
FLUSH WITH GROUND

N 14040899.709
E 2448839.233
EL 415.66

BENCHMARK #101

EL 419.30

FOUND CUT "X" ON THE SOUTH HEX BOLT ON A HYDRANT LOCATED ON THE NORTH SIDE OF MISSOURI AVENUE, ALONG THE WEST SIDE OF THE TRIPLE AMTRAK TRACKS, JUST NORTH OF THE MLK BRIDGE, 0.6 MILES EAST OF FRONT STREET

BENCHMARK #130

EL 426.66

SET CHISLED "X" ON THE NORTH HEX BOLT ON A FIRE HYDRANT LOCATED ON THE SOUTH SIDE OF RIVER PARK DRIVE, AT THE INTERSECTION OF RIVER PARK DRIVE AND DIVISION STREET

BENCHMARK #131

EL 426.59

SET CHISLED "X" ON THE SOUTH HEX BOLT ON A FIRE HYDRANT LOCATED ON THE INTERSECTION OF RIVER PARK DRIVE AND ENTRANCE RAMP OF EADS BRIDGE WEST BOUND

BENCHMARK #132

EL 422.17

SET CHISLED "X" ON THE SOUTH HEX BOLT ON A FIRE HYDRANT LOCATED #225' SOUTH OF THE INTERSECTION OF RIVER PARK DRIVE AND NORTH B STREET, ON THE EAST SIDE OF NORTH B STREET

BENCHMARK #133

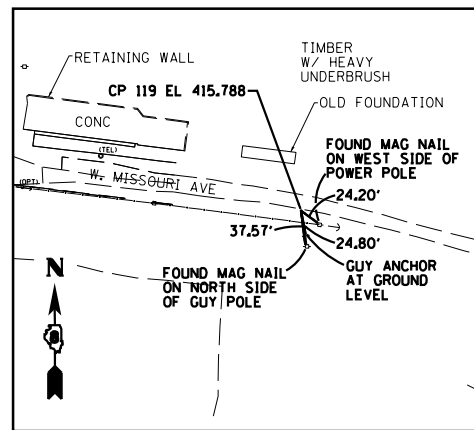
EL 418.37

SET RAILROAD SPIKE IN 2ND POWER POLE WEST OF THE INTERSECTION OF MISSOURI AVE AND NORTH B STREET ON THE SOUTH SIDE OF MISSOURI AVENUE. SET ON NORTH SIDE OF POWER POLE.

BENCHMARK #103

EL 419.23

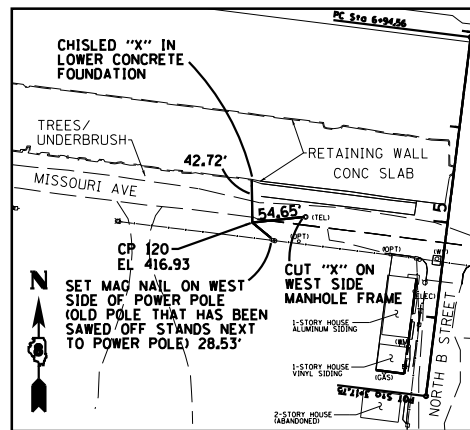
FOUND CUT "X" ON WEST RIM OF A MANHOLE AT THE INTERSECTION OF FRONT STREET AND SPARSELY TRAVELED WEST END OF MISSOURI AVENUE.



CONTROL POINT #119

FOUND IRON PIN WITH IDOT CAP
FLUSH WITH GROUND

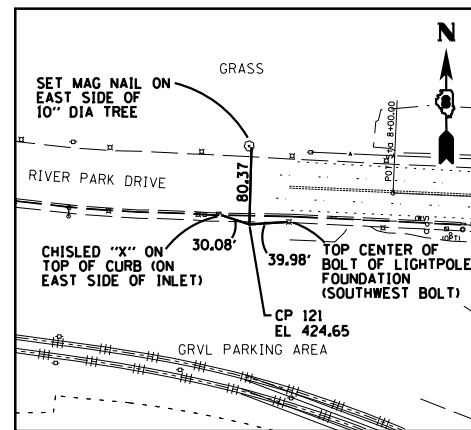
N 14041018.908
E 2448351.921
EL 415.79



CONTROL POINT #120

SET 5/8" REBAR W/ CAP
FLUSH WITH GROUND

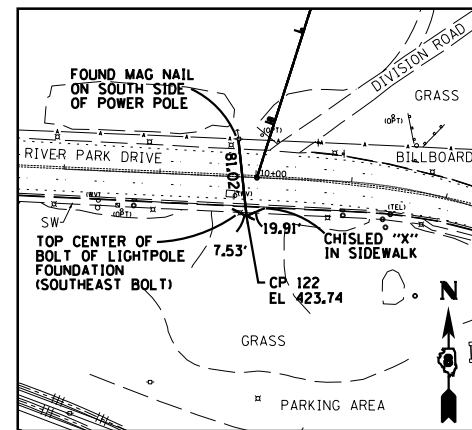
N 14041089.920
E 2447821.011
EL 416.93



CONTROL POINT #121

SET 5/8" REBAR W/ CAP
FLUSH WITH GROUND

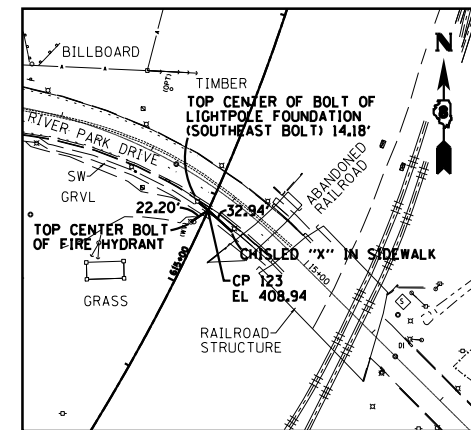
N 14039679.270
E 2449374.533
EL 424.65



CONTROL POINT #122

SET 5/8" REBAR W/ CAP
FLUSH WITH GROUND

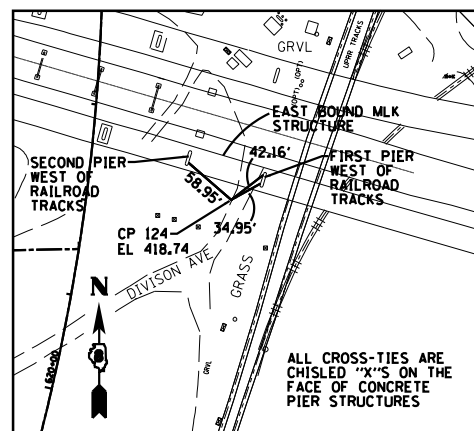
N 14039663.230
E 2449714.358
EL 423.74



CONTROL POINT #123

SET 5/8" REBAR W/ CAP
FLUSH WITH GROUND

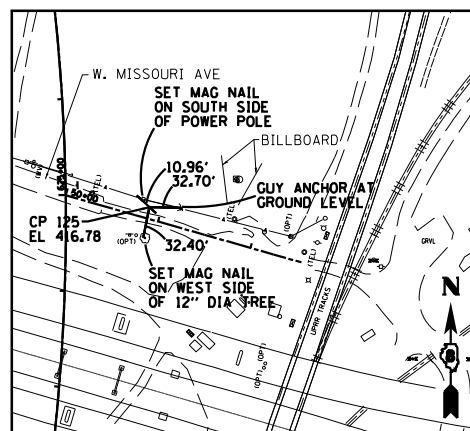
N 14039584.170
E 2450075.058
EL 408.94



CONTROL POINT #124

SET 5/8" REBAR W/ CAP
FLUSH WITH GROUND

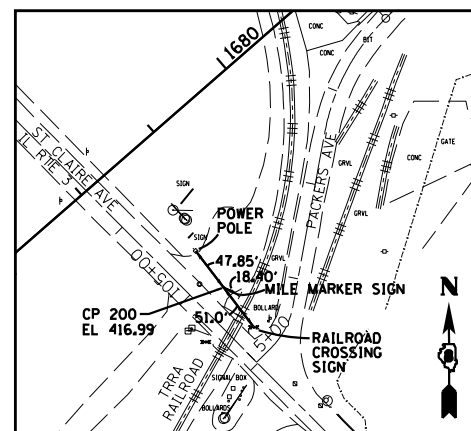
N 14040176.350
E 2450396.257
EL 418.74



CONTROL POINT #125

SET 5/8" REBAR W/ CAP
FLUSH WITH GROUND

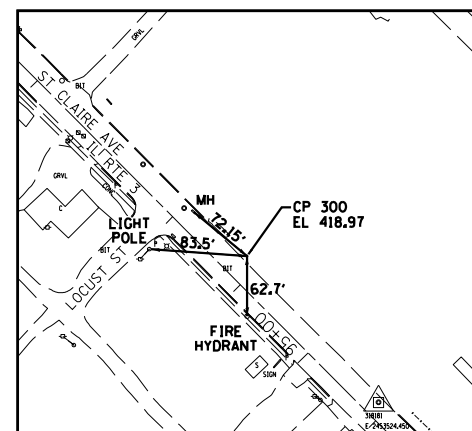
N 14040462.940
E 2450349.614
EL 416.78



CONTROL POINT #200

FOUND IRON ROD WITH IDOT CAP
FLUSH WITH GROUND

N 14044316.431
E 2452780.630
EL 416.99



CONTROL POINT #300

FOUND IRON ROD WITH IDOT CAP
FLUSH WITH GROUND

N 14043700.040
E 2453387.437
EL 418.97

FILE NAME = P:\IDOT-DB\0100134.27 IL3 Final Plans\Contract 76848\Dgn\0876848-shr-ATB.dgn	USER NAME = dmeyer	DESIGNED - JJO	REVISED -	STATE OF ILLINOIS DEPARTMENT OF TRANSPORTATION	ALIGNMENTS, TIES, AND BENCHMARKS	F.A.P. RT. = 788	SECTION = 520-1-2HVB, 520-1-2HVB-1	COUNTY = ST. CLAIR	TOTAL SHEETS = 237	SHEET NO. = 23	
PLOT SCALE = 200.0000' / in.	CHECKED - PJM	REVISED -	REVISED -			SCALE:	SHEET NO. OF SHEETS	STA. TO STA.	CONTRACT NO. 76848		
PLOT DATE = 10/18/2012	DATE = 10/18/12	REVISED -	REVISED -			ILLINOIS FED. AID PROJECT					