

WEST EDGE OF SHOULDER

Location	Station	Offset	Theoretical Grade Elevations
S. End of North Appr. Slab	1654+35.29	-4.00	449.07
A3	1654+45.29	-4.00	449.00
A4	1654+55.29	-4.00	448.93
N. End of North Appr. Slab	1654+65.29	-4.00	448.84

WEST EDGE OF ROADWAY AND PROFILE GRADE

Location	Station	Offset	Theoretical Grade Elevations
S. End of North Appr. Slab	1654+33.34	0.00	449.17
A3	1654+43.34	0.00	449.10
A4	1654+53.34	0.00	449.03
N. End of North Appr. Slab	1654+63.34	0.00	448.94

☉ ROADWAY

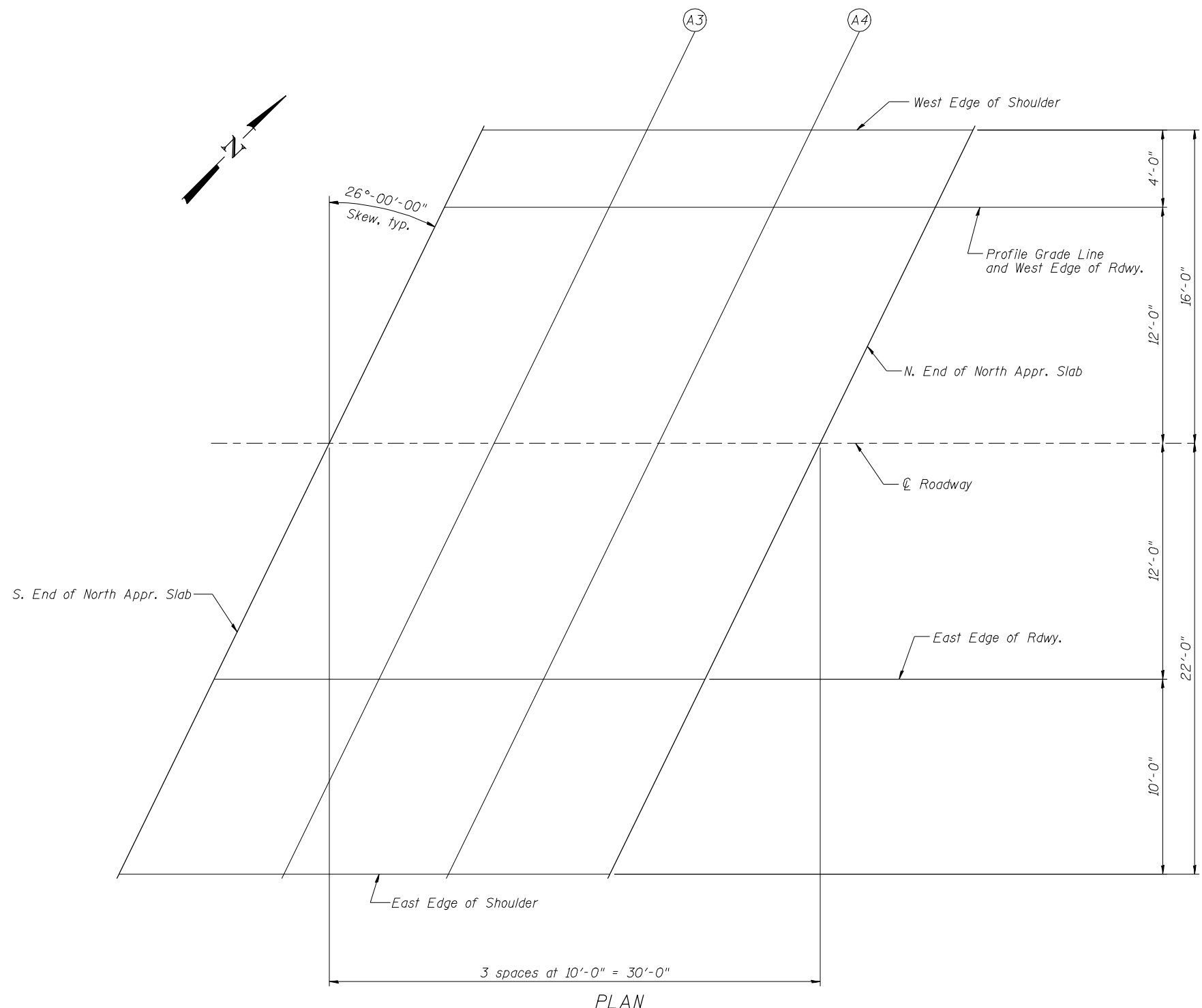
Location	Station	Offset	Theoretical Grade Elevations
S. End of North Appr. Slab	1654+27.49	12.00	449.39
A3	1654+37.49	12.00	449.33
A4	1654+47.49	12.00	449.26
N. End of North Appr. Slab	1654+57.49	12.00	449.18

EAST EDGE OF ROADWAY

Location	Station	Offset	Theoretical Grade Elevations
S. End of North Appr. Slab	1654+21.64	24.00	449.23
A3	1654+31.64	24.00	449.18
A4	1654+41.64	24.00	449.11
N. End of North Appr. Slab	1654+51.64	24.00	449.04

EAST EDGE OF SHOULDER

Location	Station	Offset	Theoretical Grade Elevations
S. End of North Appr. Slab	1654+16.76	34.00	449.05
A3	1654+26.76	34.00	449.00
A4	1654+36.76	34.00	448.94
N. End of North Appr. Slab	1654+46.76	34.00	448.87



Notes:  
 Units = Feet  
 Offsets are measured from Profile Grade Line.  
 Negative values indicate offset is to left when looking ahead station.

17-OCT-2012 16:23 P:\CX\31000\700cadd\7095tr\FINAL PLANS\0820334-76848-013-Appr Slab Elev(NB).dgn