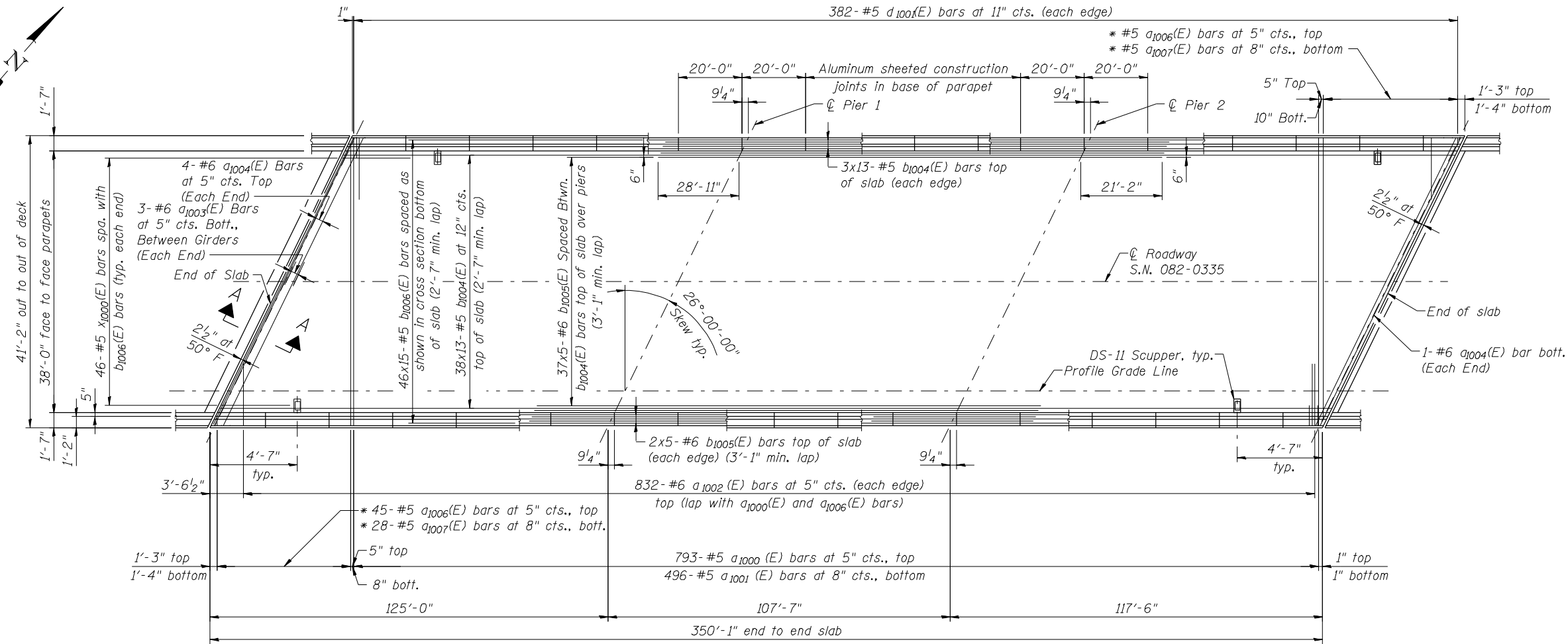
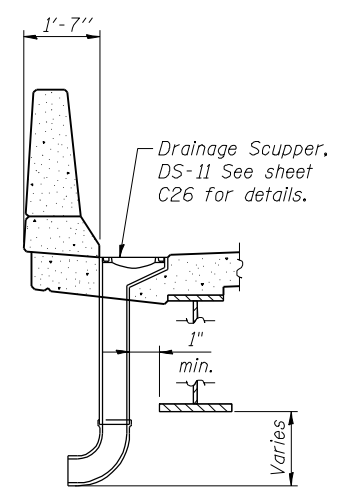


17-OCT-2012 16:24 P:\CX31000\T00cadd\T095tr\FINAL_PLANS\0820335-76848-017-Superstructure(SB).dgn



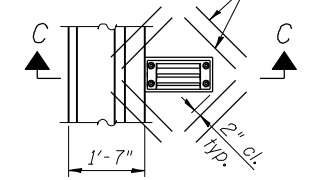
* Order a₁₀₀₆(E) & a₁₀₀₇(E) bars full length. Cut bars in field to fit skew and use remainder of bars at other end of deck.

PLAN



SECTION C-C

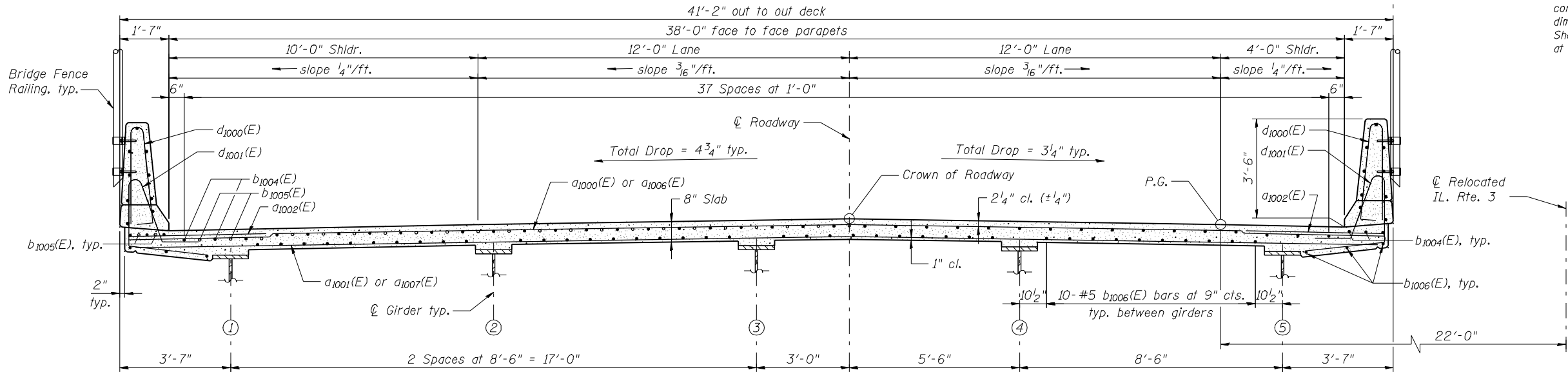
1-#5 a₁₀₀₈(E) bars at 4" cts. (1'-6" long) tied to bottom of top reinforcement mat. typ.



PLAN OF SCUPPER

Notes:
Cut longitudinal reinforcement to clear drainage scuppers.

Notes:
See sheet C19 for superstructure details and bill of materials. Bars indicated thus 41x15-#5 etc. indicates 41 lines of bars with 15 lengths per line.
See sheet C19 for parapet reinforcing and Section A-A. Dimensions are based on a Rolled Rail Strip Seal Joint. If the contractor elects to use the Welded Rail Strip Seal Joint, deck dimensions may require adjustments to satisfy the details on Base Sheet E-J-SSJ (Sheet C27). Required modifications shall be made at no additional costs to the State.



NEAR PIER AND MIDSPAN 2

CROSS SECTION
(Looking Ahead Station)

NEAR MIDSPAN 1 AND 3



USER NAME =	DESIGNED - N. KHATRI	REVISED -
PLOT DATE = 17-OCT-2012	CHECKED - S. HENNING	REVISED -
	DRAWN - E. BAZZELL	REVISED -
	CHECKED - J. SMITH	REVISED -

STATE OF ILLINOIS
DEPARTMENT OF TRANSPORTATION

SUPERSTRUCTURE PLAN AND SECTION - S.B.
STRUCTURE NO. 082-0334 (N.B.) & 082-0335 (S.B.)

F.A.P. RTE.	SECTION	COUNTY	TOTAL SHEETS	SHEET NO.
788	520-1-2HVB	ST. CLAIR	237	74
CONTRACT NO. 76848				