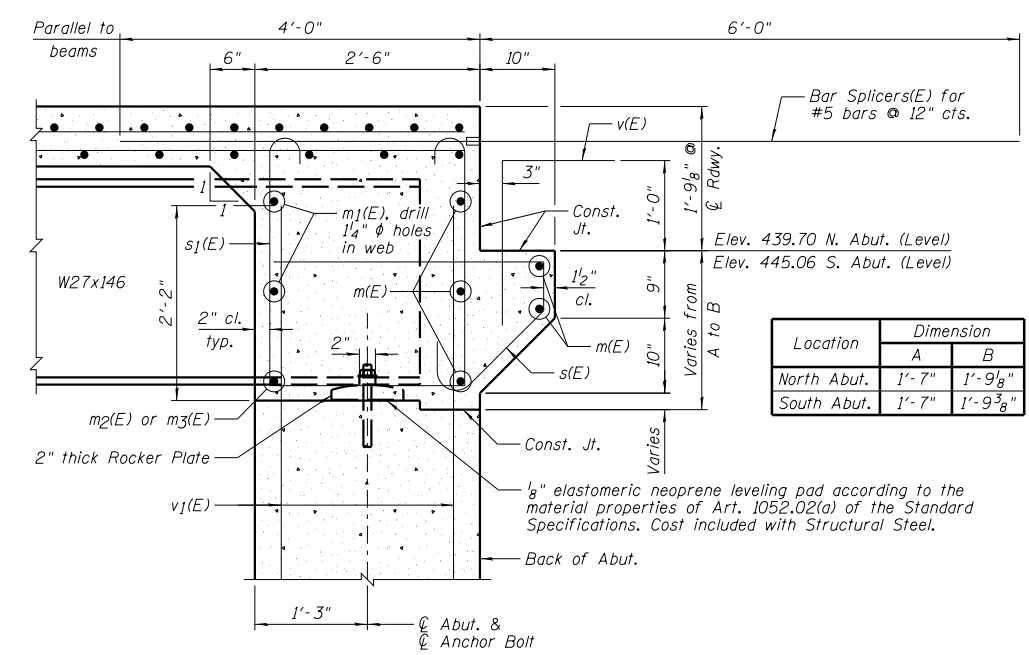


ELEVATION OF DIAPHRAGM AT NORTH ABUTMENT
(Similar to South Abutment)

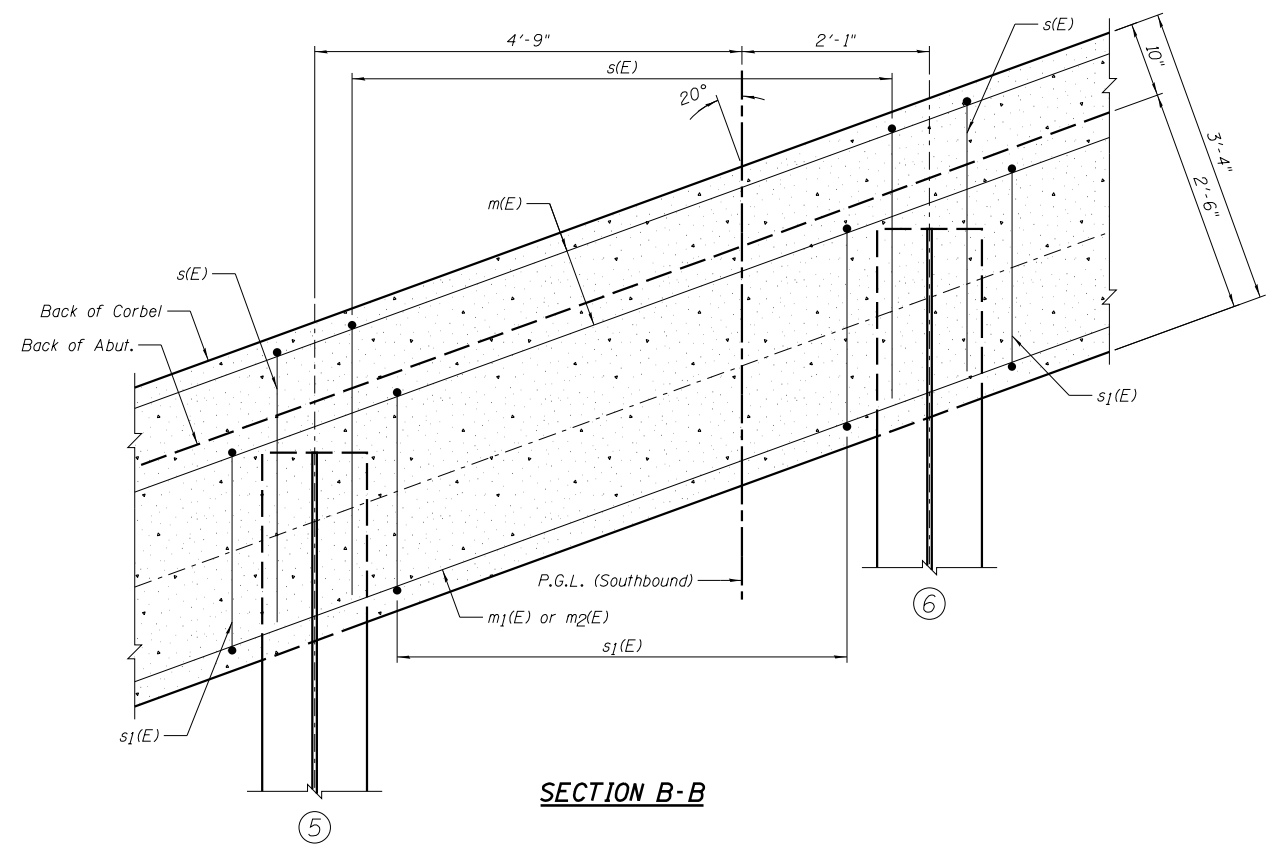
BAR LAP
#6 - 3'-4"



SECTION A-A

Dimensions @ Rt. L's except as noted.

Location	Dimension	
	A	B
North Abut.	1'-7"	1'-9 1/8"
South Abut.	1'-7"	1'-9 3/8"



SECTION B-B

NOTES:

- 1.) See Sheet B14 for Superstructure Details and Bill of Material.
- 2.) See Sheet B23 for Fixed Bearing Details.
- 3.) F.F. denotes Front Face, B.F. denotes Back Face and E.E. denotes Each End.
- 4.) See Sheet B36 for Bar Splicer Details.
- 5.) Bars indicated thus 2x6-#6 indicates 2 lines of bars with 6 lengths per line.
- 6.) The s(E) and s1(E) bars shall be placed parallel to the beams. Spacing for these bars shall be at right angles to the beams.



DESIGNED - TCR	REVISION
CHECKED - JML	REVISION
DRAWN - JWK/DJM	REVISION
CHECKED - MSW	REVISION
DATE - 10/18/12	

STATE OF ILLINOIS
DEPARTMENT OF TRANSPORTATION

DIAPHRAGM DETAILS, SOUTHBOUND ROADWAY
STRUCTURE NO. 082-0314 NB & 082-0315 SB

F.A.P. RTE.	SECTION	COUNTY	TOTAL SHEETS	SHEET NO.
788	520-1-2HVB-1	ST. CLAIR	237	148
CONTRACT NO. 76848				
ILLINOIS FED. AID PROJECT				

SHEET NO. B15 OF 50 SHEETS