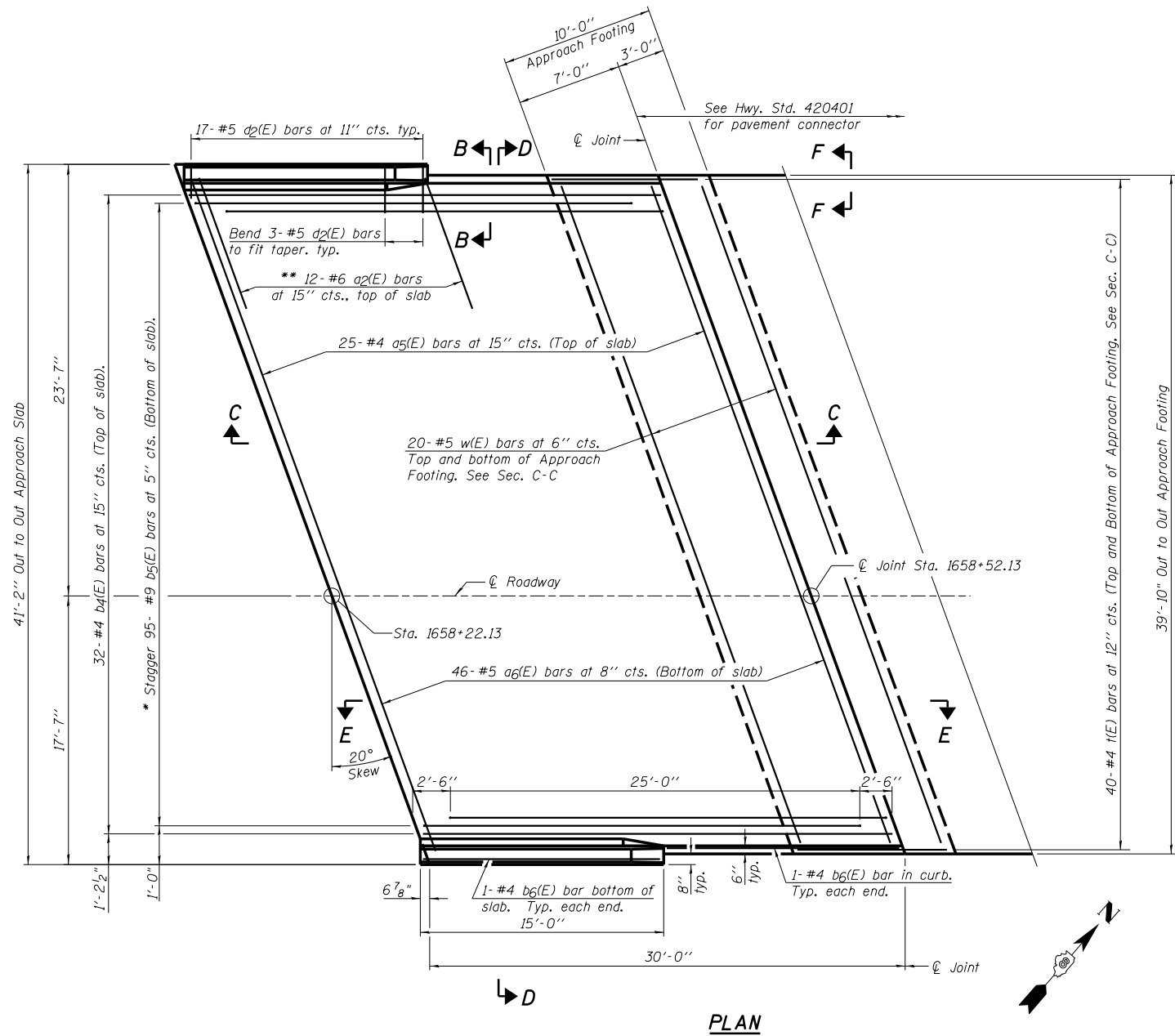


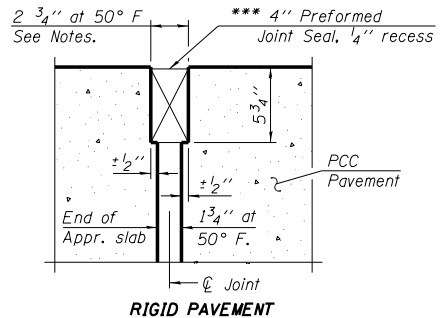
PLAN

* Tilt #9 b5(E) bars as required to maintain clearance.
 ** Space between a5(E) bars, typ. each parapet.



PLAN

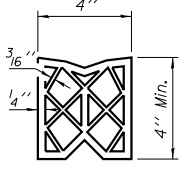
* Tilt #9 b5(E) bars as required to maintain clearance.
 ** Space between a5(E) bars, typ. each parapet.



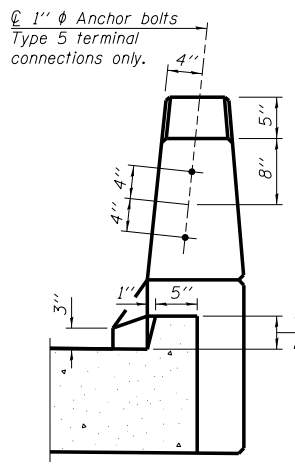
RIGID PAVEMENT

DETAIL A

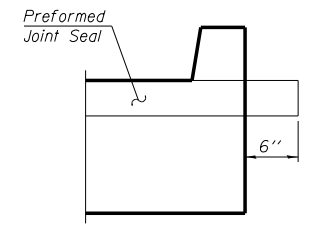
*** Cost included with Concrete Superstructure.



PREFORMED JOINT SEAL



VIEW B-B



VIEW F-F

NOTES:

- 1.) See sheet B18 for Sections C-C & D-D and View E-E. a5(E) and a6(E) bar spacings measured along \bar{C} Rdwy.
- 2.) The joint opening shall be determined per Article 520.04 except that on jointless structures, the distance described as the bridge length between the nearest fixed bearings each way from the joint shall be taken as half the bridge length plus the approach slab length. The minimum dimension shall be 1 1/2" for installation purposes.

Farnsworth GROUP, INC.
 2709 McGraw Drive
 Bloomington, Illinois 61704
 309/663-8435, 309/663-1571 fax

DESIGNED - TCR	REVISED - 02/06/13
CHECKED - JML	REVISED
DRAWN - JWK/DJM	REVISED
CHECKED - MSW	REVISED
DATE - 12/10/12	

**STATE OF ILLINOIS
 DEPARTMENT OF TRANSPORTATION**

**BRIDGE APPROACH SLAB DETAILS, SOUTHBOUND ROADWAY
 STRUCTURE NO. 082-0314 NB & 082-0315 SB**

SHEET NO. B17 OF 50 SHEETS

F.A.P. RTE.	SECTION	COUNTY	TOTAL SHEETS	SHEET NO.
788	520-1-2HBV-1	ST. CLAIR	237	150
CONTRACT NO. 76848				
ILLINOIS FED. AID PROJECT				