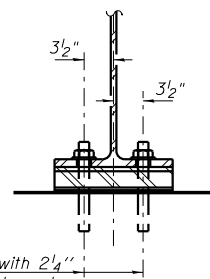


1/8" elastomeric neoprene leveling pad according to the material properties of Article 1052.02 of the Standard Specifications. Cost included with Structural Steel.

ELEVATION AT ABUTMENTS

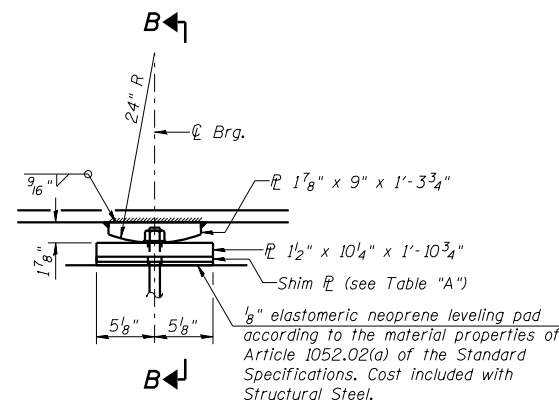


1" ϕ x 12" anchor bolts with 2 1/4" x 2 1/4" x 5/16" ϕ washer under nut. 1 3/8" x 2" slotted hole in flange. 1 1/2" ϕ holes in bearing plate.

SECTION A-A

FIXED BEARING

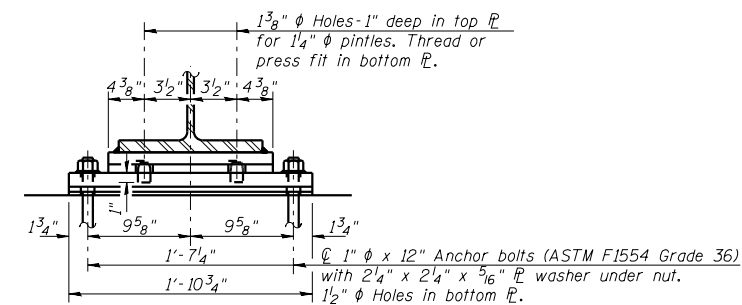
- (At South Abutment - 6 Required (Southbound))
- (At South Abutment - 6 Required (Northbound))
- (At North Abutment - 6 Required (Southbound))
- (At North Abutment - 6 Required (Northbound))



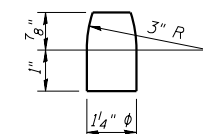
ELEVATION AT PIERS

FIXED BEARING

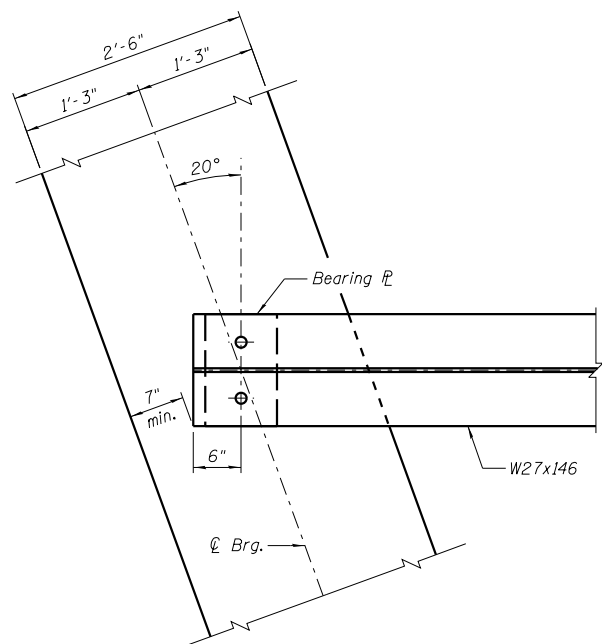
- (At Pier No. 1 - 6 Required (Southbound))
- (At Pier No. 1 - 6 Required (Northbound))
- (At Pier No. 2 - 6 Required (Southbound))
- (At Pier No. 2 - 6 Required (Northbound))



SECTION B-B

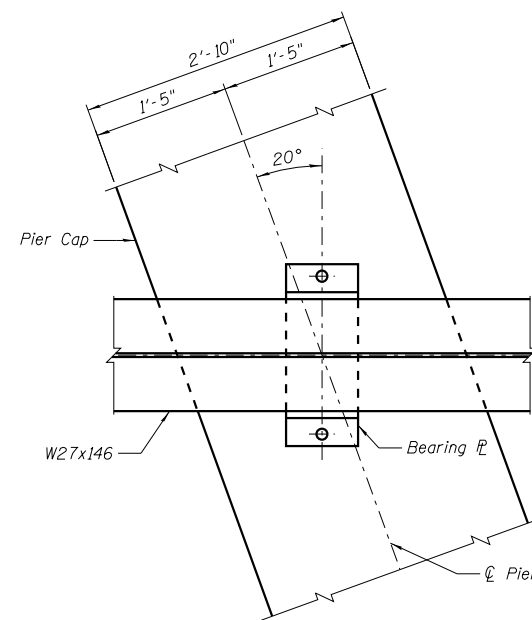


PINTLE



BEARING PLAN AT ABUTMENTS

Notes:
The anchor bolt sizes and grades shown constitute a calculated seismic structural fuse. Substitution of higher diameter and/or grade anchor bolts will not be allowed.
Anchor bolts at fixed bearings may be either cast in place or installed in holes drilled after the supported member is in place.
Drilled and set anchor bolts shall be installed according to Article 521.06 of the Standard Specifications.



BEARING PLAN AT PIERS

TABLE "A"

Beam No.	Shim Thickness
S. Abut. - 2	1/4"
S. Abut. - 4	1/2"
S. Abut. - 9	5/8"
Pier 1 - 3	5/8"
Pier 1 - 8	5/8"
Pier 2 - 3	1/2"
Pier 2 - 8	1/2"
N. Abut. - 3	1/2"
N. Abut. - 5	1/8"
N. Abut. - 8	1/2"
N. Abut. - 11	5/8"

BILL OF MATERIAL

Item	Unit	Total
Anchor Bolts, 1"	Each	96

NOTES:

- 1.) The structural steel plates of the Bearing Assembly shall conform to the requirements of AASHTO M 270 Grade 50W.
- 2.) Two 1/8 in. adjusting shims shall be provided for each bearing in addition to all other plates or shims and placed as shown on bearing details.

DESIGNED - TCR	REVISED
CHECKED - JML	REVISED
DRAWN - JWK/DJM	REVISED
CHECKED - MSW	REVISED
DATE - 10/18/12	

F.A.P. RTE.	SECTION	COUNTY	TOTAL SHEETS	SHEET NO.
788	520-1-2HVB-1	ST. CLAIR	237	156
CONTRACT NO. 76848				
ILLINOIS FED. AID PROJECT				