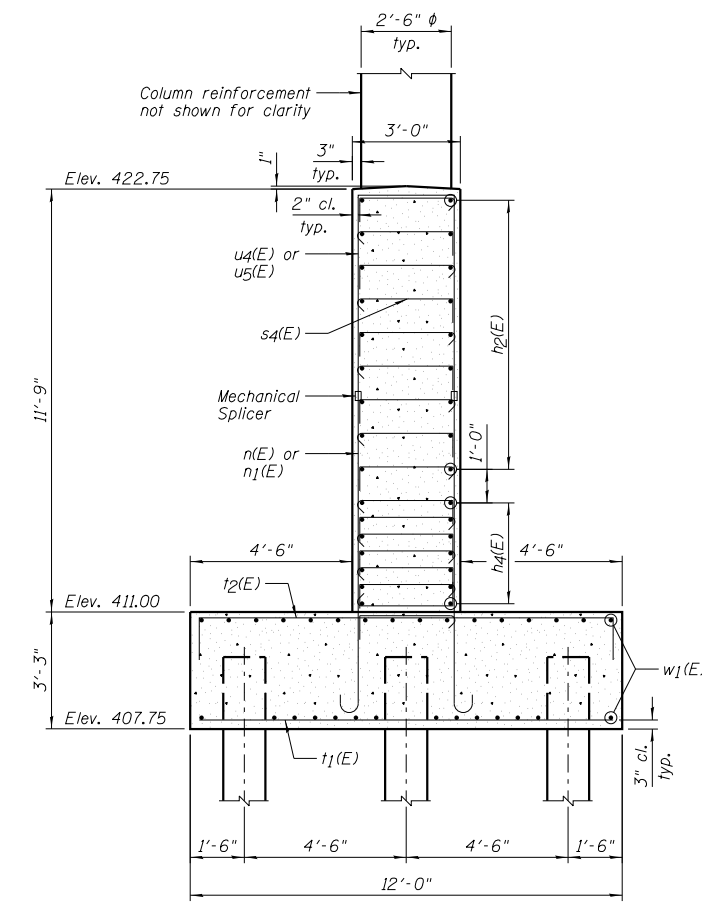
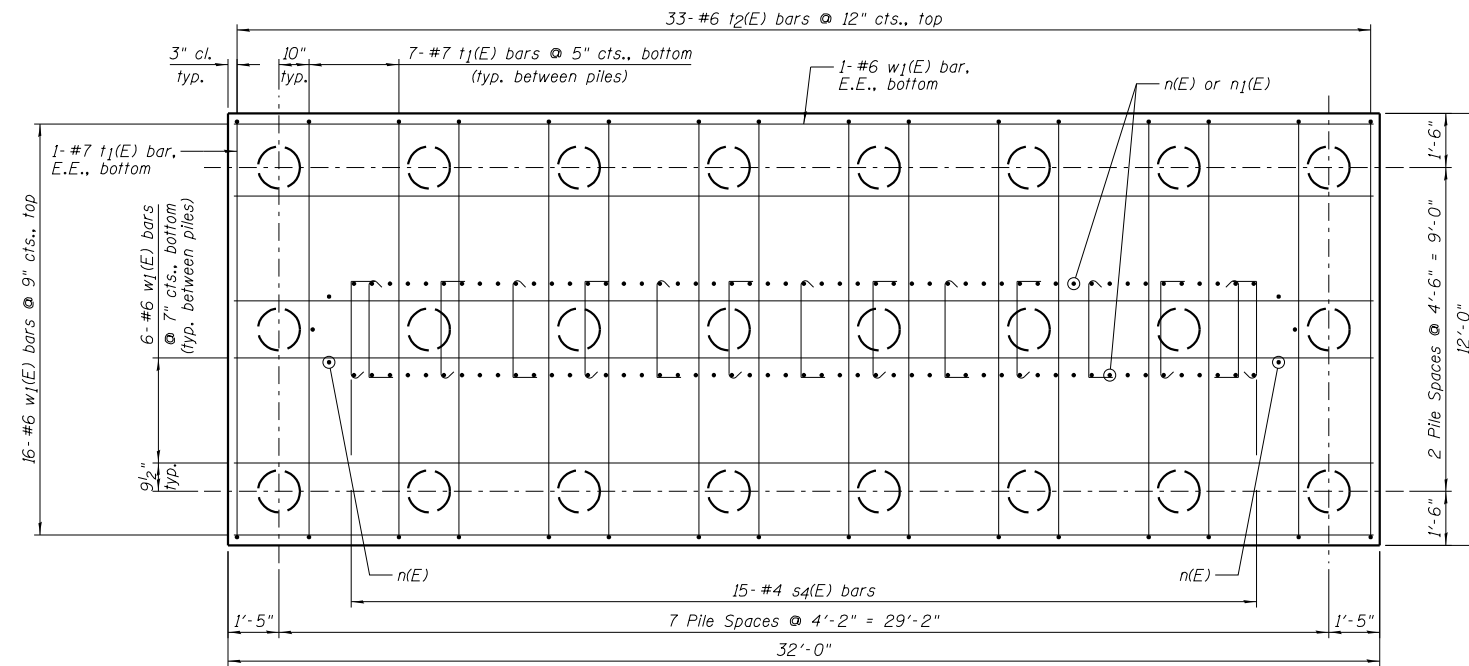


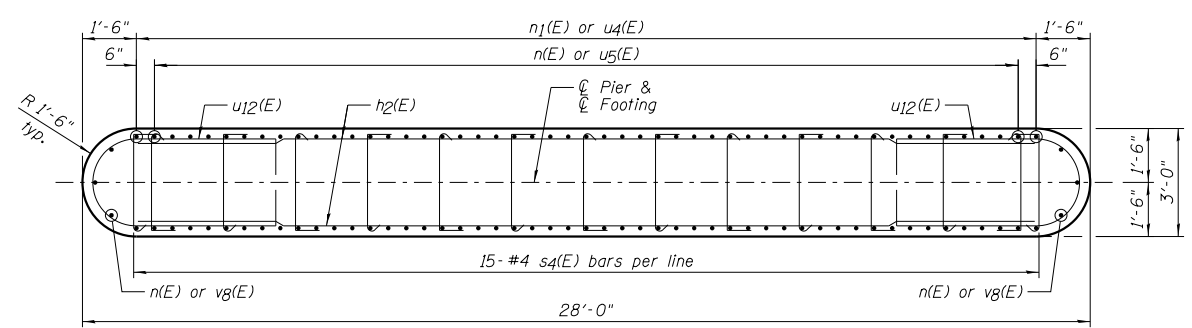
**ELEVATION**  
(Looking North)



**SECTION A-A**



**FOOTING PLAN**



**SECTION B-B**

**NOTES:**

- 1.) E.F. denotes Each Face and E.E. denotes Each End.
- 2.) \*Limits of plastic hinging region. Splicing of reinforcement will not be allowed in this region.
- 3.) Details of Crash Wall, Footing and Pile Layout are common for all piers. See Sheets B28 thru B31 for Bill of Material and Pile Data.
- 4.) See Sheet B33 for Bar Bending Diagrams.
- 5.) See Sheet B36 for Mechanical Splicer Details.

**Farnsworth**  
GROUP, INC.  
2705 McGraw Drive  
Bloomington, Illinois 61704  
309/663-8435, 309/663-1571 fax

DESIGNED - TCR	REVISED
CHECKED - JML	REVISED
DRAWN - JWK/DJM	REVISED
CHECKED - MSW	REVISED
DATE - 10/18/12	

**STATE OF ILLINOIS**  
**DEPARTMENT OF TRANSPORTATION**

**PIER DETAILS**  
**STRUCTURE NO. 082-0314 NB & 082-0315 SB**

SHEET NO. B32 OF 50 SHEETS

F.A.P. RTE.	SECTION	COUNTY	TOTAL SHEETS	SHEET NO.
788	520-1-2HVB-1	ST. CLAIR	237	165
<b>CONTRACT NO. 76848</b>				
ILLINOIS FED. AID PROJECT				