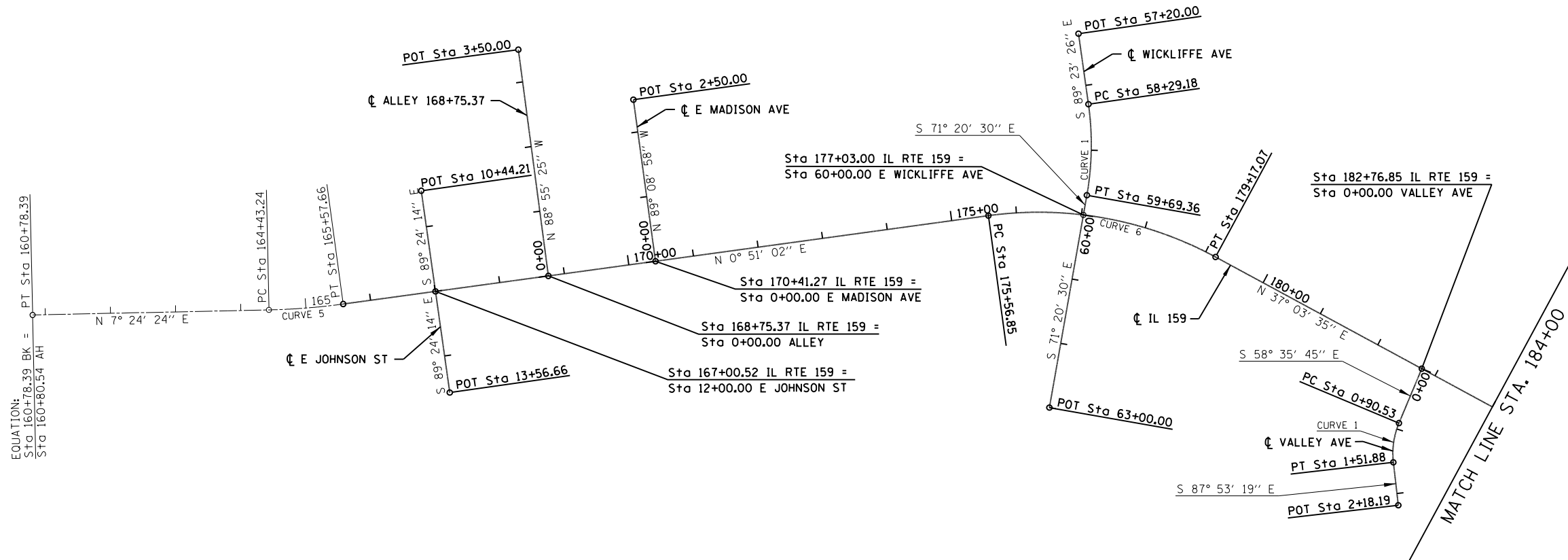




EXIST. IL RTE 159 CURVE 5  
 PI STA. =165+00.51  
 $\Delta$  =6° 33' 22" (LT)  
 D =5° 43' 46"  
 R =1,000.00'  
 T =57.28'  
 L =114.43'  
 E =1.64'  
 e = NC  
 T.R. = N/A  
 S.E. RUN = N/A  
 P.C. STA =164+43.24  
 P.T. STA =165+57.66

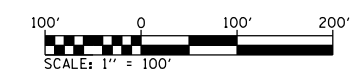
IL RTE 159 CURVE 6  
 PI STA. =177+43.21  
 $\Delta$  =36° 12' 33" (RT)  
 D =10° 03' 07"  
 R =570.00'  
 T =186.35'  
 L =360.22'  
 E =29.69'  
 e = N/A  
 T.R. = N/A  
 S.E. RUN = N/A  
 P.C. STA =175+56.85  
 P.T. STA =179+17.07

WICKLIFFE AVE CURVE 1  
 PI STA. =58+99.85  
 $\Delta$  =18° 02' 56" (RT)  
 D =12° 52' 32"  
 R =445.00'  
 T =70.68'  
 L =140.18'  
 E =5.58'  
 e = N/A  
 T.R. = N/A  
 S.E. RUN = N/A  
 P.C. STA =58+29.18  
 P.T. STA =59+69.36



EQUATION:  
 STG 160+78.39 BK =  
 STG 160+80.54 AH

VALLEY AVE CURVE 1  
 PI STA. =1+21.89  
 $\Delta$  =29° 17' 34" (LT)  
 D =47° 44' 47"  
 R =120.00'  
 T =31.36'  
 L =61.35'  
 E =4.03'  
 e = N/A  
 T.R. = N/A  
 S.E. RUN = N/A  
 P.C. STA =0+90.53  
 P.T. STA =1+51.88



FILE NAME =	USER NAME = default	DESIGNED - AGF	REVISED -	<b>STATE OF ILLINOIS DEPARTMENT OF TRANSPORTATION</b>	<b>EXISTING &amp; PROPOSED ALIGNMENT</b>			F.A.P. RTE. = 600	SECTION = 60-(30,31,128)-3	COUNTY = MADISON	TOTAL SHEETS = 529	SHEET NO. = 82
P:\Projects\513501\CADD\GN\0876885-sh1.dgn		DRAWN - AGF	REVISED -		SCALE: 1" = 100'	SHEET NO. 1 OF 3 SHEETS	STA. 160+78.39 TO STA. 184+00.00	CONTRACT NO. 76885				
		CHECKED - CLS	REVISED -					FED. ROAD DIST. NO. ILLINOIS FED. AID PROJECT				
		DATE - 01/25/2013	REVISED -									