

IL RTE 159 CURVE 10  
 PI STA = 227+03.37  
 $\Delta = 1^\circ 24' 39''$  (RT)  
 $D = 1^\circ 16' 24''$   
 $R = 4,500.00'$   
 $T = 55.40'$   
 $L = 110.80'$   
 $E = 0.34'$   
 $e = N/A$   
 $T.R. = N/A$   
 $S.E. RUN = N/A$   
 $P.C. STA = 226+47.97$   
 $P.T. STA = 227+58.77$

\*1401 RTE 159  
 ONE STORY COMMERCIAL

\*1375 RTE 159  
 2 STORY APARTMENT COMPLEX

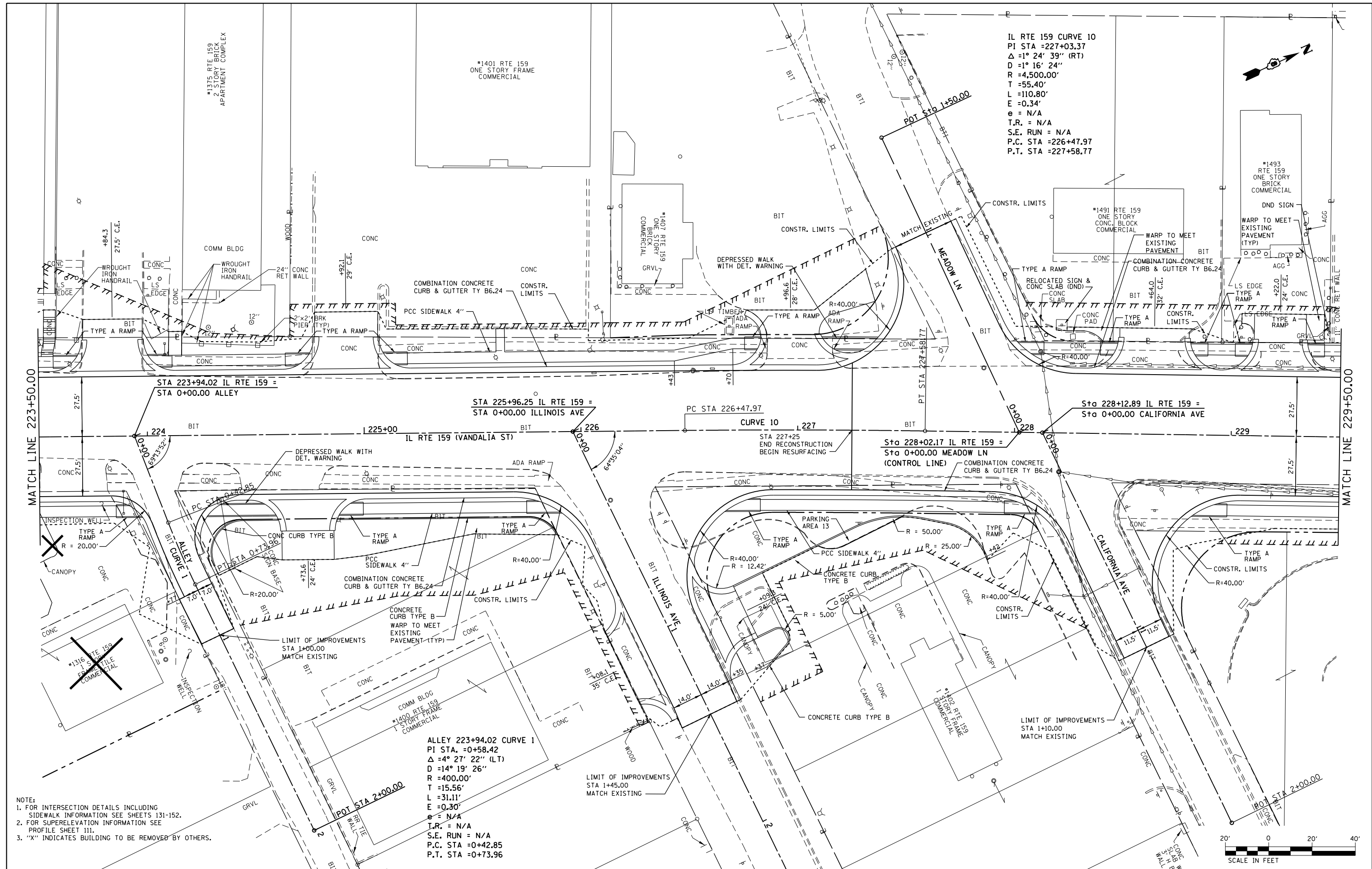
\*1493  
 RTE 159  
 ONE STORY BRICK COMMERCIAL

\*1491 RTE 159  
 ONE STORY CONC. BLOCK COMMERCIAL

\*1407 RTE 159  
 ONE STORY COMMERCIAL

ALLEY 223+94.02 CURVE 1  
 PI STA. = 0+58.42  
 $\Delta = 4^\circ 27' 22''$  (LT)  
 $D = 14^\circ 19' 26''$   
 $R = 400.00'$   
 $T = 15.56'$   
 $L = 31.11'$   
 $E = 0.30'$   
 $e = N/A$   
 $T.R. = N/A$   
 $S.E. RUN = N/A$   
 $P.C. STA = 0+42.85$   
 $P.T. STA = 0+73.96$

NOTE:  
 1. FOR INTERSECTION DETAILS INCLUDING SIDEWALK INFORMATION SEE SHEETS 131-152.  
 2. FOR SUPERELEVATION INFORMATION SEE PROFILE SHEET 111.  
 3. "X" INDICATES BUILDING TO BE REMOVED BY OTHERS.



FILE NAME =	USER NAME = default	DESIGNED - AGF	REVISED -
P:\Projects\513501\CADD\DN\0876885-sht\p\pr.f.dgn		DRAWN - AGF	REVISED -
		CHECKED - CLS	REVISED -
		DATE - 01/25/2013	REVISED -

**STATE OF ILLINOIS  
 DEPARTMENT OF TRANSPORTATION**

**PLAN  
 IL ROUTE 159**

SCALE: 1" = 20'    SHEET NO. 23 OF 43 SHEETS    STA. 223+50.00 TO STA. 229+50.00

F.A.P. RTE.	SECTION	COUNTY	TOTAL SHEETS	SHEET NO.
600	60-(30,31,128)-3	MADISON	529	110
CONTRACT NO. 76885				
ILLINOIS FED. AID PROJECT				