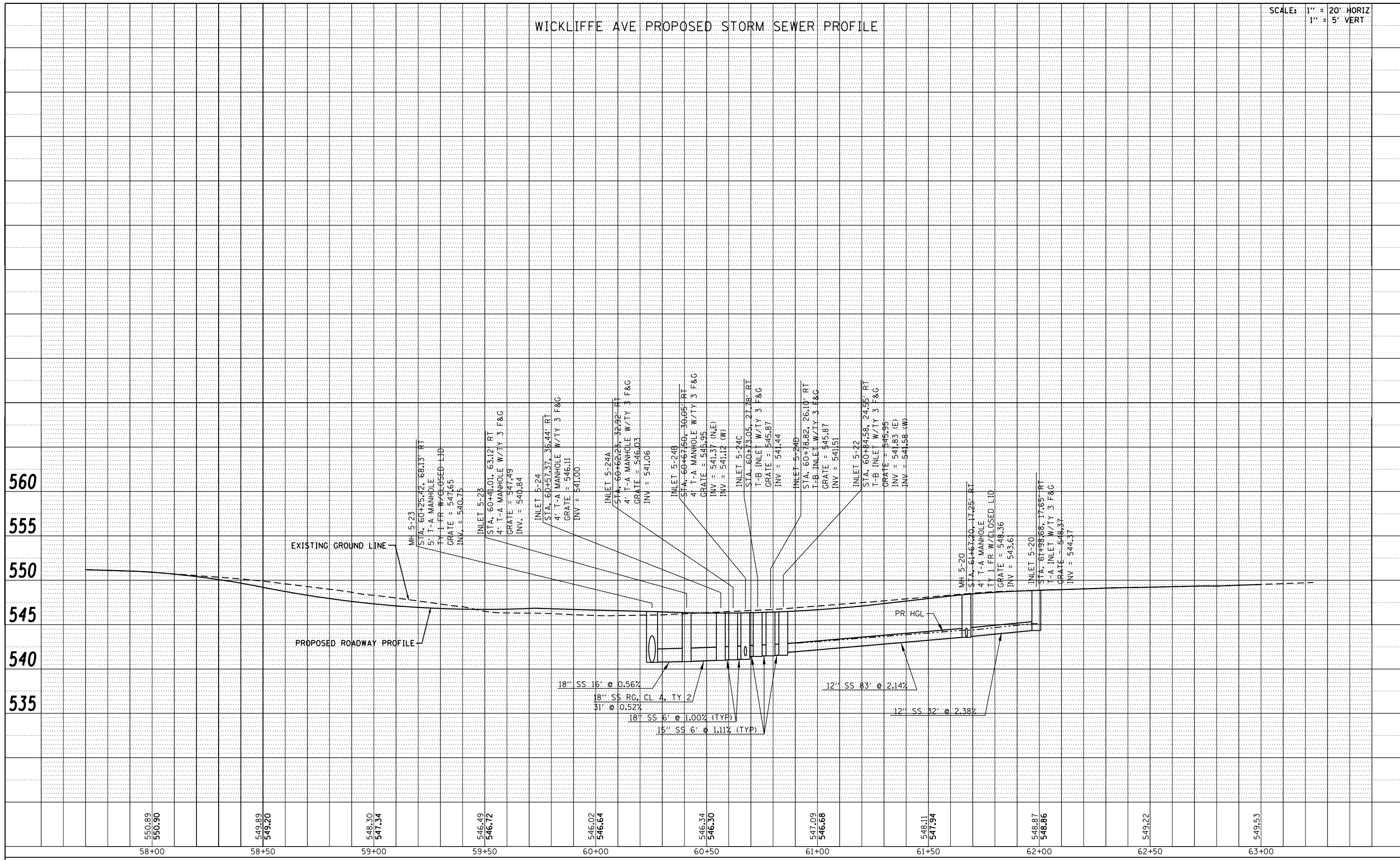


WICKLIFFE AVE PROPOSED STORM SEWER PROFILE

SCALE: 1" = 20' HORIZ  
1" = 5' VERT

PLAN	SURVEYED	BY	DATE
NOTE BOOK NO.	PLOTTED		
	ALIGNMENT CHECKED		
	STRUCTURE CHECKED		
	CADD FILE NAME		

PROFILE	SURVEYED	BY	DATE
NOTE BOOK NO.	GRADES CHECKED		
	STRUCTURE NOT AT THIS OFFICE		



FILE NAME = P:\Projects\513501\CADD\DCN\0876885-shd-drain.dgn	USER NAME = default	DESIGNED - DRH	REVISED -	<p align="center"><b>STATE OF ILLINOIS</b> <b>DEPARTMENT OF TRANSPORTATION</b></p> <p align="center"><b>DRAINAGE AND UTILITY PROFILE</b> <b>WICKLIFFE AVE</b></p>	F.A.P. RTE. 600	SECTION 60-(30,31,128)-3	COUNTY MADISON	TOTAL SHEETS 529	SHEET NO. 164
PLOT SCALE = 40.0000' / in.	CHECKED - VAM	REVISED -	REVISED -		SCALE: N/A	SHEET NO. 11 OF 73 SHEETS	STA. 58+00.00 TO STA. 63+00.00	CONTRACT NO. 76885	
PLOT DATE = 2/1/2013	DATE - 01/25/2013	REVISED -	REVISED -		ILLINOIS FED. AID PROJECT				