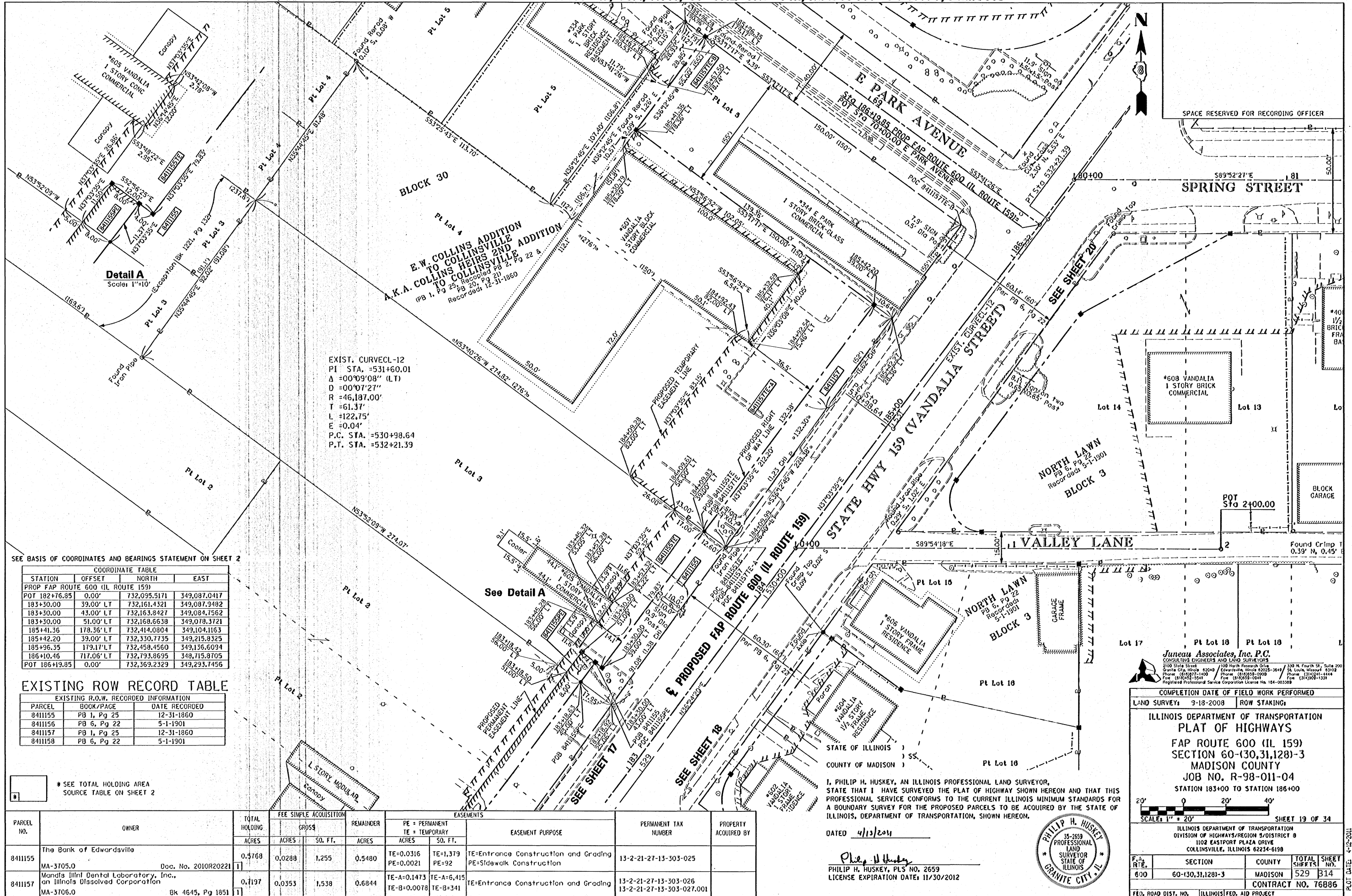


PART OF THE SW 1/4 OF SECTION 27, T3N, R8W, OF THE 3RD PM, MADISON COUNTY, ILLINOIS



Detail A
Scale: 1"=10'

EXIST. CURVECL-12
PI STA. =531+60.01
Δ =00°09'08" (LT)
D =00°07'27"
R =46,187.00'
T =61.37'
L =122.75'
E =0.04'
P.C. STA. =530+98.64
P.T. STA. =532+21.39

SEE BASIS OF COORDINATES AND BEARINGS STATEMENT ON SHEET 2

STATION	OFFSET	NORTH	EAST
POT 182+76.85	0.00'	732,095.5171	349,087.0417
183+30.00	39.00' LT	732,161.4321	349,087.9482
183+30.00	43.00' LT	732,163.8427	349,084.7562
183+30.00	51.00' LT	732,168.6638	349,078.3721
185+41.36	178.36' LT	732,414.0804	349,104.1163
185+42.20	39.00' LT	732,330.7735	349,215.8325
185+96.35	179.17' LT	732,458.4560	349,136.6094
186+10.46	717.06' LT	732,793.8695	348,715.8705
POT 186+19.85	0.00'	732,369.2329	349,293.7456

PARCEL	EXISTING R.O.W.	RECORDED INFORMATION
8411155	PB 1, Pg 25	12-31-1860
8411156	PB 6, Pg 22	5-1-1901
8411157	PB 1, Pg 25	12-31-1860
8411158	PB 6, Pg 22	5-1-1901

* SEE TOTAL HOLDING AREA SOURCE TABLE ON SHEET 2

PARCEL NO.	OWNER	TOTAL HOLDING ACRES	FEE SIMPLE ACQUISITION		EASEMENTS		PERMANENT TAX NUMBER	PROPERTY ACQUIRED BY	
			GROSS ACRES	REMAINDER SO. FT.	PE = PERMANENT ACRES	TE = TEMPORARY SO. FT.			
8411155	The Bank of Edwardsville MA-3705.0 Doc. No. 2010R20221	0.3768	0.0288	1,255	0.5480	TE=0.0316 PE=0.0021	TE=1,379 PE=92	TE=Entrance Construction and Grading PE=Sidewalk Construction	13-2-21-27-13-303-025
8411157	Manda Illini Dental Laboratory, Inc., on Illinois Dissolved Corporation MA-3706.0 Bk 4643, Pg 1851	0.7197	0.0353	1,538	0.6844	TE-A=0.1473 TE-B=0.0078	TE-A=6,415 TE-B=341	TE=Entrance Construction and Grading	13-2-21-27-13-303-026 13-2-21-27-13-303-027.001

I, PHILIP H. HUSKEY, AN ILLINOIS PROFESSIONAL LAND SURVEYOR, STATE THAT I HAVE SURVEYED THE PLAT OF HIGHWAY SHOWN HEREON AND THAT THIS PROFESSIONAL SERVICE CONFORMS TO THE CURRENT ILLINOIS MINIMUM STANDARDS FOR A BOUNDARY SURVEY FOR THE PROPOSED PARCELS TO BE ACQUIRED BY THE STATE OF ILLINOIS, DEPARTMENT OF TRANSPORTATION, SHOWN HEREON.

DATED 4/13/2011
Philip H. Huskey
PHILIP H. HUSKEY, PLS NO. 2659
LICENSE EXPIRATION DATE: 11/30/2012



Juneau Associates, Inc. P.C.
CONSULTING ENGINEERS AND LAND SURVEYORS
2100 State Street, Suite 200, Granite City, Illinois 62040
Phone: (618) 977-1400 Fax: (618) 977-1400
100 North Research Drive, Granite City, Illinois 62040
Phone: (618) 977-1400 Fax: (618) 977-1400
330 N. Fourth St., Suite 200, St. Louis, Missouri 63102
Phone: (314) 241-4444 Fax: (314) 241-4444
Registered Professional Service Corporation License No. 154-003389

COMPLETION DATE OF FIELD WORK PERFORMED
LAND SURVEY: 9-18-2008 ROW STAKING

ILLINOIS DEPARTMENT OF TRANSPORTATION
PLAT OF HIGHWAYS
FAP ROUTE 600 (IL 159)
SECTION 60-(30,31,128)-3
MADISON COUNTY
JOB NO. R-98-011-04
STATION 183+00 TO STATION 186+00

SCALE: 1" = 20'

SHEET 19 OF 34

ILLINOIS DEPARTMENT OF TRANSPORTATION
DIVISION OF HIGHWAYS/REGION 5/DISTRICT 8
1102 EASTPORT PLAZA DRIVE
COLLINGSVILLE, ILLINOIS 62234-6198

F.A.P. RTE.	SECTION	COUNTY	TOTAL SHEETS	SHEET NO.
600	60-(30,31,128)-3	MADISON	529	B14

FED. ROAD DIST. NO. ILLINOIS FED. AID PROJECT CONTRACT NO. 76886

055607.00D