

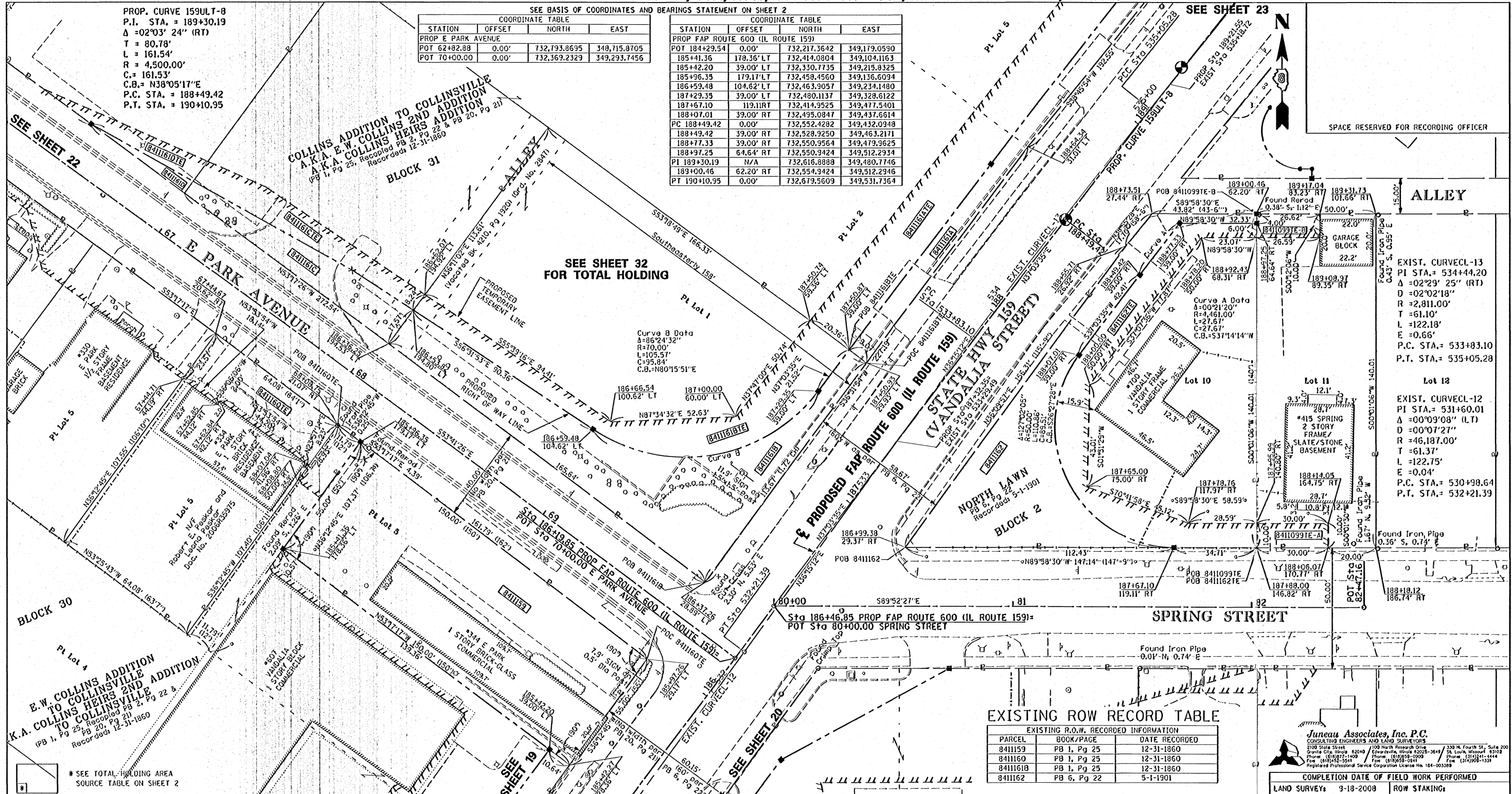
PART OF THE SW 1/4 OF SECTION 27, T3N, R8W, OF THE 3RD PM, MADISON COUNTY, ILLINOIS

PROP. CURVE 159UL-T-8
 P.I. STA. = 189+30.19
 $\Delta = 02^{\circ}03'24''$ (RT)
 T = 80.78'
 L = 161.54'
 R = 4,500.00'
 C.B. = N38^{\circ}05'17''E
 P.C. STA. = 188+49.42
 P.T. STA. = 190+10.95

SEE BASIS OF COORDINATES AND BEARINGS STATEMENT ON SHEET 2

STATION	OFFSET	NORTH	EAST
PROP E PARK AVENUE			
POT 62+82.88	0.00'	732,793.8695	348,715.8705
POT 70+00.00	0.00'	732,369.2329	349,293.7456

STATION	OFFSET	NORTH	EAST
PROP FAP ROUTE 600 (IL ROUTE 159)			
POT 184+29.54	0.00'	732,217.3642	349,179.0590
185+41.36	178.36' LT	732,414.0804	349,104.1163
185+42.20	39.00' LT	732,350.7735	349,215.8325
185+96.35	179.17' LT	732,458.4560	349,136.6094
186+59.48	104.62' LT	732,463.9057	349,234.1480
187+29.35	39.00' LT	732,480.1137	349,328.6122
187+67.10	119.11RT	732,414.9525	349,477.5401
188+07.01	39.00' RT	732,495.0847	349,437.6614
PC 188+49.42	0.00'	732,592.4282	349,432.0948
188+49.42	39.00' RT	732,528.9250	349,463.2171
188+77.33	39.00' RT	732,550.9564	349,479.9625
188+97.25	64.64' RT	732,550.9424	349,512.2934
PI 189+30.19	N/A	732,616.8888	349,480.7746
189+00.46	62.20' RT	732,554.9424	349,512.2946
PT 190+10.95	0.00'	732,679.5609	349,531.7364



SEE SHEET 32 FOR TOTAL HOLDING

Curve B Data
 $\Delta = 86^{\circ}24'32''$
 R = 70.00'
 L = 105.51'
 C.B. = N80^{\circ}15'51''E

EXIST. CURVECL-13
 PI STA. = 534+44.20
 $\Delta = 02^{\circ}29'25''$ (RT)
 D = 02^{\circ}02'18"
 R = 2,811.00'
 T = 61.10'
 L = 122.18'
 E = 0.66'
 P.C. STA. = 533+83.10
 P.T. STA. = 535+05.28

Lot 12
 EXIST. CURVECL-12
 PI STA. = 531+60.01
 $\Delta = 00^{\circ}09'08''$ (LT)
 D = 00^{\circ}07'27"
 R = 46,187.00'
 T = 61.37'
 L = 122.75'
 E = 0.04'
 P.C. STA. = 530+98.64
 P.T. STA. = 532+21.39

EXISTING ROW RECORD TABLE

PARCEL	BOOK/PAGE	DATE RECORDED
8411159	PB 1, Pg 25	12-31-1860
8411160	PB 1, Pg 25	12-31-1860
8411161B	PB 1, Pg 25	12-31-1860
8411162	PB 6, Pg 22	5-1-1901

* SEE TOTAL HOLDING AREA SOURCE TABLE ON SHEET 2

PARCEL NO.	OWNER	TOTAL HOLDING ACRES	FEE SIMPLE ACQUISITION			EASEMENTS		PERMANENT TAX NUMBER	PROPERTY ACQUIRED BY	
			GROSS ACRES	SO. FT.	REMAINDER ACRES	PE = PERMANENT ACRES	TE = TEMPORARY SO. FT.			EASEMENT PURPOSE
8411099	Jason E. Lewis, a single person MA-4303.0 Doc. No. 2005R28238	0.1607	N/A	N/A	N/A	TE-A=0.0069 TE-B=0.0061	TE-A=300 TE-B=266	Construction, Grading	13-2-21-27-13-302-029	
8411159	Shalanco, Inc. MA-3707.0 Bk 4117, Pg 2085	0.1894	0.1894	8,250	N/A	N/A	N/A	Building Removal, Entrance Construction & Grading	13-2-21-27-13-303-027	(Already Released)
8411160	Robert E. Peskar and Leona Peskar, husband and wife, as Tenants by the Entirety MA-4138.0 Doc. No. 2006R35975	0.1580	N/A	N/A	N/A	TE=0.0322	TE=1,404	Entrance Construction & Grading	13-2-21-27-13-303-001	
8411161	LaSalle National Bank, as Trustee under a Trust Agreement Dated the 3rd day of August, 1964 and known as Trust Number 32671 A-MA-3710.0 C-MA-4141.0 Alnana Enterprises, Inc. B-MA-3708.0 D-MA-4127.0 Patricia Ann McClristan MA-3690.0 Bk 4457, Pg 364	A=2.6534 C=0.2787 B=0.4330 D=0.2867 0.3084	A=0.0641 C=0.0310 B=0.1244 D=0.0035 0.0985	A=2,793 C=1,352 B=5,420 D=151 4,290	A=2.5893 C=0.2477 B=0.3086 D=0.2832 0.2099	APE=0.0023 ATE=0.1413 CTE=0.0254	APE=101 ATE=6,153 CTE=1,109	APE=Sight Distance Protection ATE=Entrance Construction, Grading CTE=Entrance Construction, Grading	A=13-2-21-27-13-301-012 C=13-2-21-27-13-301-009	
						BTE=0.0582 DTE=0.0106 TE=0.0567	BTE=2,535 DTE=461 TE=2,472	BTE=Entrance Construction, Grading DTE=Entrance Construction, Grading Slidewalk Construction and Grading	B=13-2-21-27-13-301-010 D=13-2-21-27-13-301-008	

STATE OF ILLINOIS)
) SS
 COUNTY OF MADISON)

I, PHILIP H. HUSKEY, AN ILLINOIS PROFESSIONAL LAND SURVEYOR, STATE THAT I HAVE SURVEYED THE PLAT OF HIGHWAY SHOWN HEREON AND THAT THIS PROFESSIONAL SERVICE CONFORMS TO THE CURRENT ILLINOIS MINIMUM STANDARDS FOR A BOUNDARY SURVEY FOR THE PROPOSED PARCELS TO BE ACQUIRED BY THE STATE OF ILLINOIS, DEPARTMENT OF TRANSPORTATION, SHOWN HEREON.

DATED 4/13/2011

Philip H. Huskey
 PHILIP H. HUSKEY, PLS NO. 2659
 LICENSE EXPIRATION DATE: 11/30/2012

Juneau Associates, Inc. P.C.
 CONSULTING ENGINEERS AND LAND SURVEYORS
 2100 State Street, Granite City, Illinois 62040
 Phone: (618) 952-1400 Fax: (618) 952-1404
 100 North Research Drive, Collinsville, Illinois 62423-2649
 Phone: (618) 952-0700 Fax: (618) 952-0700
 330 N. Fourth St., Suite 200, St. Louis, Missouri 63102
 Phone: (314) 241-4444 Fax: (314) 241-1331
 Registered Professional Service Corporation License No. 184-003559

COMPLETION DATE OF FIELD WORK PERFORMED
 LAND SURVEY: 9-18-2008 ROW STAKING:

ILLINOIS DEPARTMENT OF TRANSPORTATION
 PLAT OF HIGHWAYS
 FAP ROUTE 600 (IL 159)
 SECTION 60-(30,31,128)-3
 MADISON COUNTY
 JOB NO. R-98-011-04
 STATION 185+25 TO STATION 189+25

SCALE: 1" = 20'

SHEET 21 OF 34

ILLINOIS DEPARTMENT OF TRANSPORTATION
 DIVISION OF HIGHWAYS/REGION 5/DISTRICT 8
 1102 EASTPORT PLAZA DRIVE
 COLLINSVILLE, ILLINOIS 62234-6198

F.A. RTE.	SECTION	COUNTY	TOTAL SHEETS	SHEET NO.
600	60-(30,31,128)-3	MADISON	529	316

CONTRACT NO. 76886
 FED. ROAD DIST. NO. ILLINOIS FED. AID PROJECT