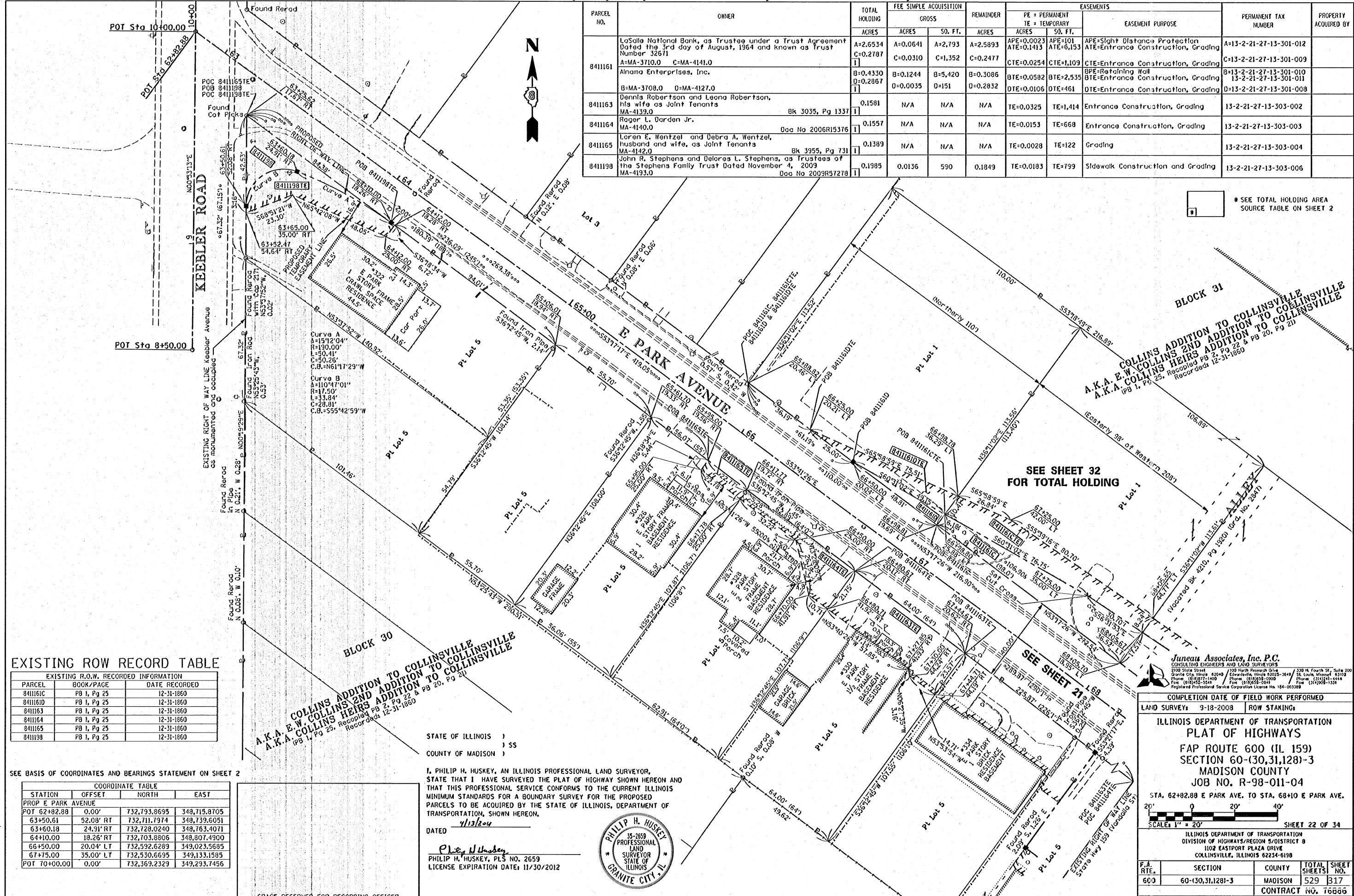


PART OF THE SW 1/4 OF SECTION 27, T3N, R8W, OF THE 3RD PM, MADISON COUNTY, ILLINOIS

PARCEL NO.	OWNER	TOTAL HOLDING ACRES	FEE SIMPLE ACQUISITION GROSS		REMAINDER ACRES	EASEMENTS		PERMANENT TAX NUMBER	PROPERTY ACQUIRED BY
			ACRES	SQ. FT.		ACRES	SQ. FT.		
8411161	LaSalle National Bank, as Trustee under a Trust Agreement Dated the 3rd day of August, 1964 and known as Trust Number 32671 A=MA-3710.0 C=MA-4141.0 Alnoma Enterprises, Inc. B=MA-3708.0 D=MA-4127.0	A=2.6534 C=0.2787 B=0.4330 D=0.2867	A=0.0641 C=1.352	A=2,793 C=1,352	A=2.5893 C=0.2477 B=0.3086 D=0.2832	APE=0.0023 ATE=0.1413 CTE=0.0254 BTE=0.0582 DTE=0.1016	APE=101 ATE=6,153 CTE=1,109 BTE=2,535 DTE=461	APE=Sight Distance Protection ATE=Entrance Construction, Grading BPE=Retaining Wall BTE=Entrance Construction, Grading DTE=Entrance Construction, Grading	A=13-2-21-27-13-301-012 C=13-2-21-27-13-301-009 B=13-2-21-27-13-301-010 D=13-2-21-27-13-301-011 D=13-2-21-27-13-301-008
8411163	Dennis Robertson and Leona Robertson, his wife as Joint Tenants Bk 3035, Pg 1337	0.1581	N/A	N/A	N/A	TE=0.0325	TE=1,414	Entrance Construction, Grading	13-2-21-27-13-303-002
8411164	Roger L. Darden Jr. MA-4140.0 Doc No 2006R15376	0.1557	N/A	N/A	N/A	TE=0.0153	TE=668	Entrance Construction, Grading	13-2-21-27-13-303-003
8411165	Loren E. Wentzel and Debra A. Wentzel, husband and wife, as Joint Tenants MA-4142.0 Bk 3955, Pg 731	0.1389	N/A	N/A	N/A	TE=0.0028	TE=122	Grading	13-2-21-27-13-303-004
8411198	John R. Stephens and Delores L. Stephens, as Trustees of the Stephens Family Trust Dated November 4, 2009 MA-4193.0 Doc No 2009R57278	0.1985	0.0136	590	0.1849	TE=0.0183	TE=799	Sidewalk Construction and Grading	13-2-21-27-13-303-006

* SEE TOTAL HOLDING AREA SOURCE TABLE ON SHEET 2



EXISTING ROW RECORD TABLE

PARCEL	BOOK/PAGE	DATE RECORDED
8411161C	PB 1, Pg 25	12-31-1860
8411161D	PB 1, Pg 25	12-31-1860
8411163	PB 1, Pg 25	12-31-1860
8411164	PB 1, Pg 25	12-31-1860
8411165	PB 1, Pg 25	12-31-1860
8411198	PB 1, Pg 25	12-31-1860

SEE BASIS OF COORDINATES AND BEARINGS STATEMENT ON SHEET 2

STATION	OFFSET	NORTH	EAST
PROP E PARK AVENUE			
POT 62+82.88	0.00'	732,793.8695	348,715.8705
63+50.61	52.08' RT	732,711.7974	349,739.6051
63+60.18	24.91' RT	732,728.0240	348,763.4071
64+10.00	18.26' RT	732,703.8806	348,807.4900
66+50.00	20.04' LT	732,592.6289	349,023.5685
67+75.00	35.00' LT	732,530.6695	349,133.1585
POT 70+00.00	0.00'	732,369.2329	349,293.7456

COLLINS ADDITION TO COLLINSVILLE
A.K.A. E.W. COLLINS 2ND ADDITION TO COLLINSVILLE
A.K.A. COLLINS HEIRS ADDITION TO COLLINSVILLE
 (Pg 1, Pg 25, Recorded 12-31-1860)

STATE OF ILLINOIS)
 COUNTY OF MADISON) SS

I, PHILIP H. HUSKEY, AN ILLINOIS PROFESSIONAL LAND SURVEYOR, STATE THAT I HAVE SURVEYED THE PLAT OF HIGHWAY SHOWN HEREON AND THAT THIS PROFESSIONAL SERVICE CONFORMS TO THE CURRENT ILLINOIS MINIMUM STANDARDS FOR A BOUNDARY SURVEY FOR THE PROPOSED PARCELS TO BE ACQUIRED BY THE STATE OF ILLINOIS, DEPARTMENT OF TRANSPORTATION, SHOWN HEREON.

DATED 4/13/2014
Philip H. Huskey
 PHILIP H. HUSKEY, PLS NO. 2659
 LICENSE EXPIRATION DATE: 11/30/2012



SEE SHEET 32 FOR TOTAL HOLDING

SEE SHEET 21

Juneau Associates, Inc. P.C.
 CONSULTING ENGINEERS AND LAND SURVEYORS
 2100 State Street, Suite 200, Granite City, Illinois 62040
 Phone: (618) 972-1400 Fax: (618) 972-2911
 100 North Research Drive, Edwardsville, Illinois 62025-2649
 Phone: (618) 972-1400 Fax: (618) 972-2911
 330 N. Fourth St., Suite 200, St. Louis, Missouri 63102
 Phone: (314) 241-4444 Fax: (314) 241-1331
 Registered Professional Service Corporation License No. 184-003589

COMPLETION DATE OF FIELD WORK PERFORMED
 LAND SURVEY: 9-18-2008 ROW STAKING

ILLINOIS DEPARTMENT OF TRANSPORTATION
 PLAT OF HIGHWAYS
 FAP ROUTE 600 (IL 159)
 SECTION 60-(30,31,128)-3
 MADISON COUNTY
 JOB NO. R-98-011-04
 STA. 62+82.88 E PARK AVE. TO STA. 68+10 E PARK AVE.

SCALE: 1" = 20'

SHEET 22 OF 34

ILLINOIS DEPARTMENT OF TRANSPORTATION
 DIVISION OF HIGHWAYS/REGION 5/DISTRICT 8
 1102 EASTPORT PLAZA DRIVE
 COLLINSVILLE, ILLINOIS 62234-6198

F.A. RTE.	SECTION	COUNTY	TOTAL SHEETS NO.
600	60-(30,31,128)-3	MADISON	529 317

CONTRACT NO. 106666

FED. ROAD DIST. NO. [ILLINOIS] FED. AID PROJECT