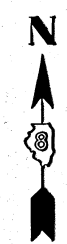
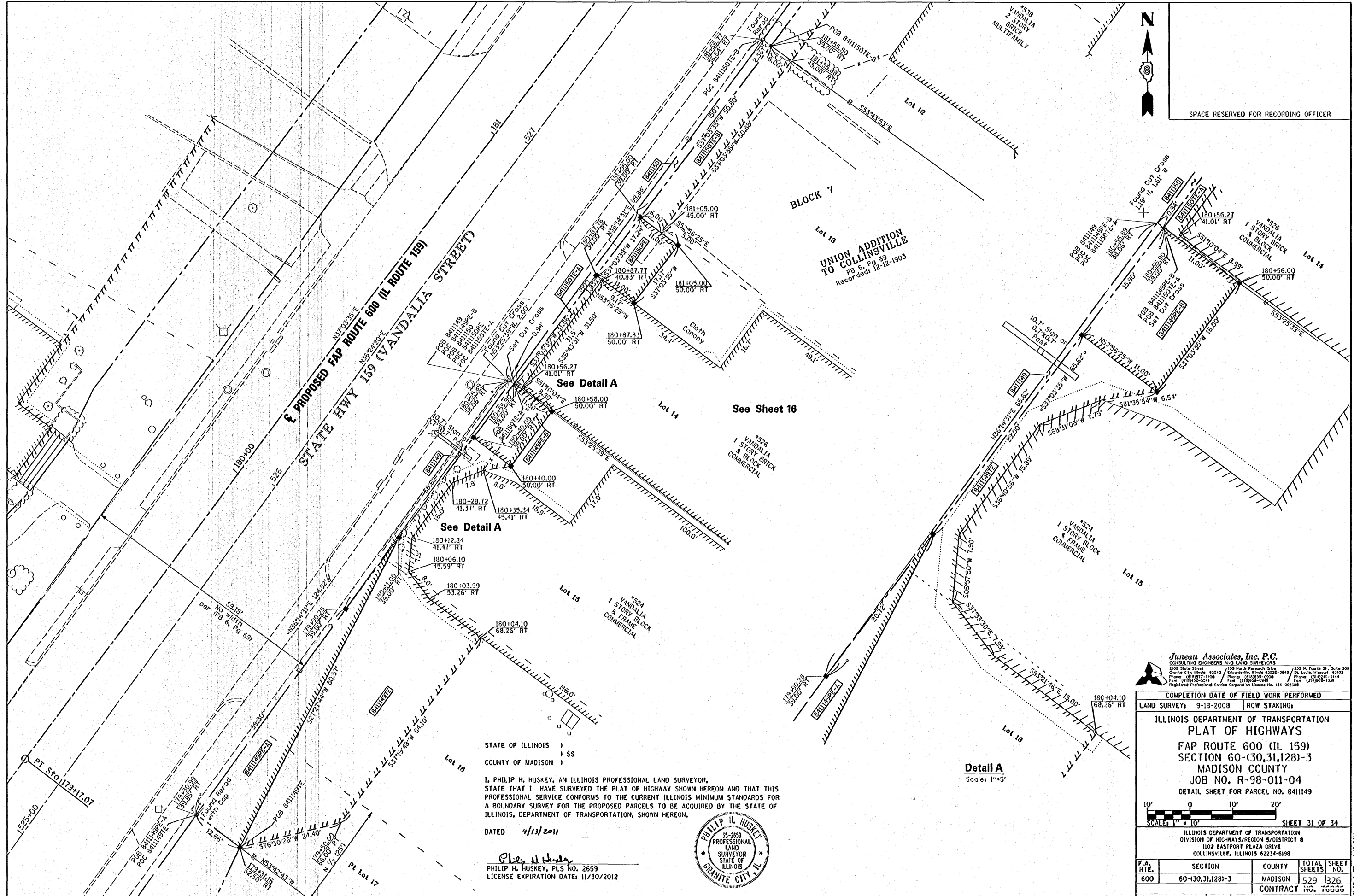


PART OF THE SW 1/4 OF SECTION 27, T3N, R8W, OF THE 3RD PM, MADISON COUNTY, ILLINOIS

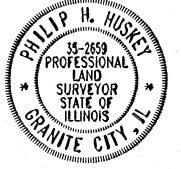


SPACE RESERVED FOR RECORDING OFFICER

STATE OF ILLINOIS )  
 ) SS  
 COUNTY OF MADISON )

I, PHILIP H. HUSKEY, AN ILLINOIS PROFESSIONAL LAND SURVEYOR, STATE THAT I HAVE SURVEYED THE PLAT OF HIGHWAY SHOWN HEREON AND THAT THIS PROFESSIONAL SERVICE CONFORMS TO THE CURRENT ILLINOIS MINIMUM STANDARDS FOR A BOUNDARY SURVEY FOR THE PROPOSED PARCELS TO BE ACQUIRED BY THE STATE OF ILLINOIS, DEPARTMENT OF TRANSPORTATION, SHOWN HEREON.

DATED 4/13/2011



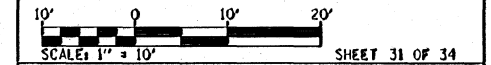
*Philip H. Huskey*  
 PHILIP H. HUSKEY, PLS NO. 2659  
 LICENSE EXPIRATION DATE: 11/30/2012

**Detail A**  
 Scale: 1"=5'

**Juneau Associates, Inc. P.C.**  
 CONSULTING ENGINEERS AND LAND SURVEYORS  
 2100 State Street, Granite City, Illinois 62040  
 Phone: (618) 977-1400 Fax: (618) 952-5511  
 200 North Research Drive, Granite City, Illinois 62040  
 Phone: (618) 958-0900 Fax: (618) 952-2941  
 330 N. Fourth St., Suite 200, St. Louis, Missouri 63102  
 Phone: (314) 414-4444 Fax: (314) 694-1339  
 Registered Professional Service Corporation License No. 104-003389

COMPLETION DATE OF FIELD WORK PERFORMED	
LAND SURVEY: 3-18-2008	ROW STAKING:

ILLINOIS DEPARTMENT OF TRANSPORTATION  
 PLAT OF HIGHWAYS  
 FAP ROUTE 600 (IL 159)  
 SECTION 60-(30,31,128)-3  
 MADISON COUNTY  
 JOB NO. R-98-011-04  
 DETAIL SHEET FOR PARCEL NO. 8411149



ILLINOIS DEPARTMENT OF TRANSPORTATION  
 DIVISION OF HIGHWAYS/REGION 9/DISTRICT 8  
 1102 EASTPORT PLAZA DRIVE  
 COLLINSVILLE, ILLINOIS 62234-6198

F.A. RTE.	SECTION	COUNTY	TOTAL SHEETS	SHEET NO.
600	60-(30,31,128)-3	MADISON	529	326
FED. ROAD DIST. NO. [ILLINOIS] FED. AID PROJECT			CONTRACT NO. 16666	

053607 JRD

PLOT DATE: 4-12-2011