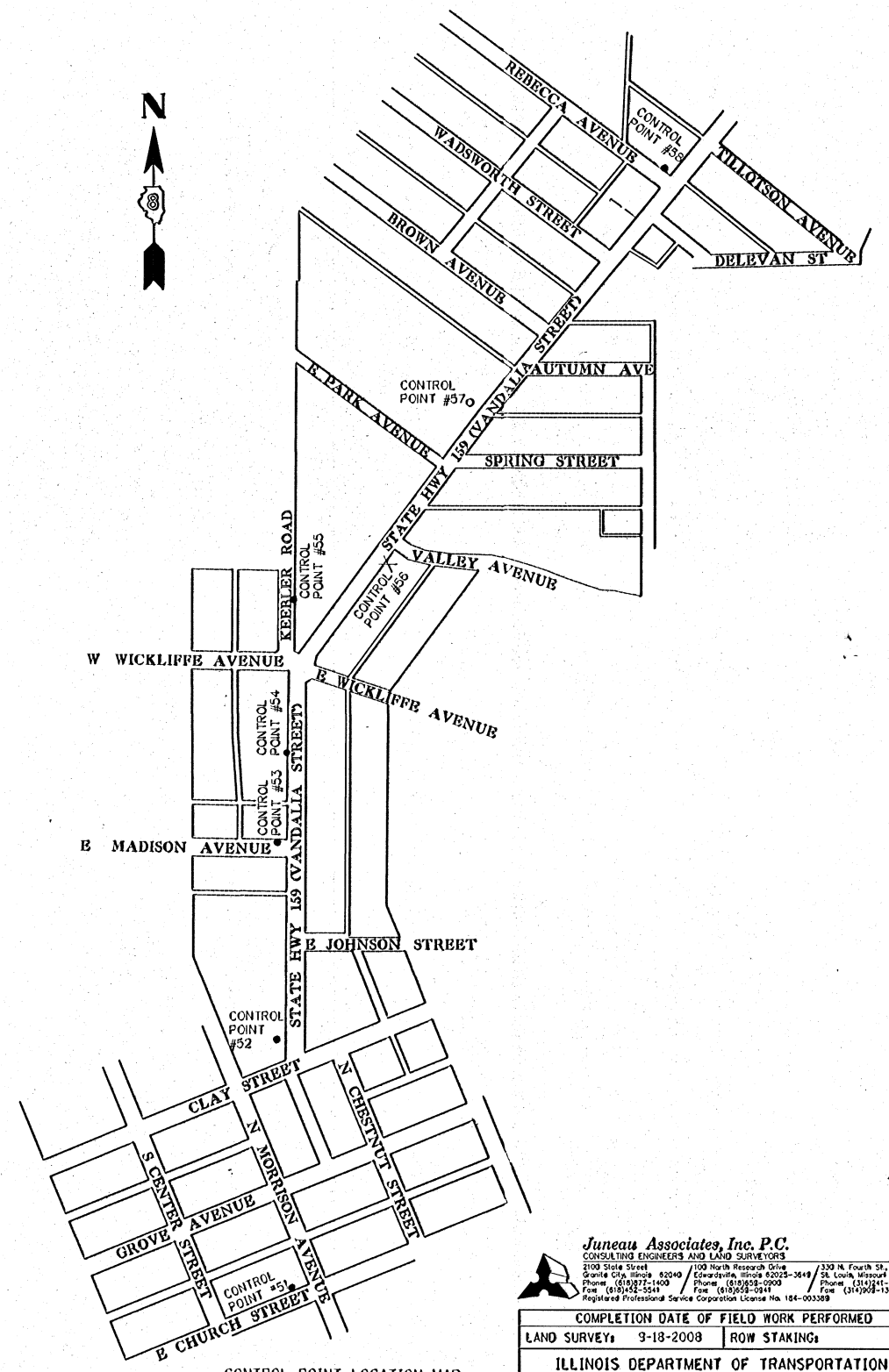
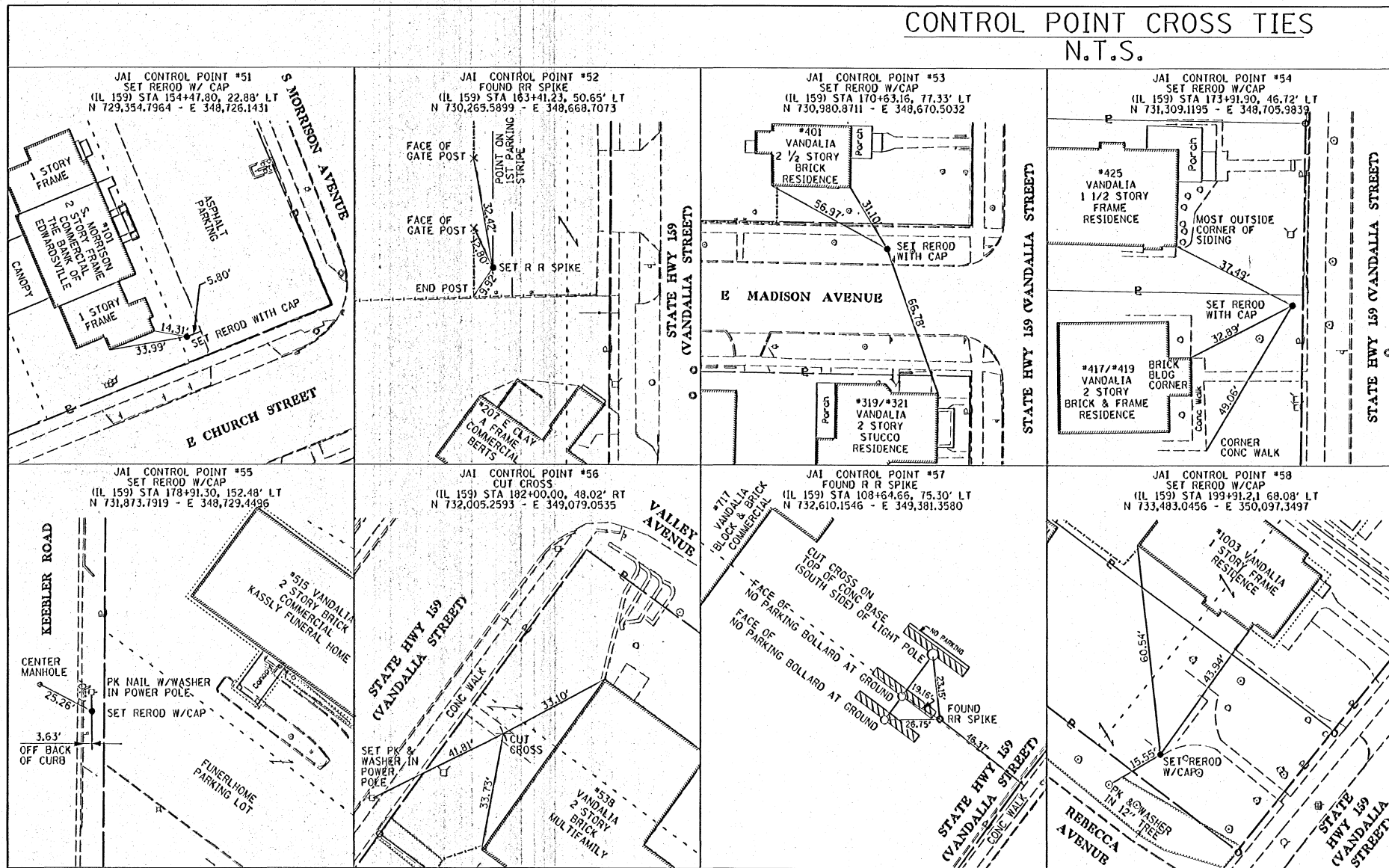


CONTROL POINT CROSS TIES
N.T.S.



STATE OF ILLINOIS)
) SS
COUNTY OF MADISON)

I, PHILIP H. HUSKEY, AN ILLINOIS PROFESSIONAL LAND SURVEYOR,
STATE THAT I HAVE SURVEYED THE PLAT OF HIGHWAY SHOWN HEREON AND THAT THIS
PROFESSIONAL SERVICE CONFORMS TO THE CURRENT ILLINOIS MINIMUM STANDARDS FOR
A BOUNDARY SURVEY FOR THE PROPOSED PARCELS TO BE ACQUIRED BY THE STATE OF
ILLINOIS, DEPARTMENT OF TRANSPORTATION, SHOWN HEREON.

DATED 4/13/2011

Philip H. Huskey
PHILIP H. HUSKEY, PLS NO. 2659
LICENSE EXPIRATION DATE: 11/30/2012



SPACE RESERVED FOR RECORDING OFFICER

Juneau Associates, Inc. P.C.
CONSULTING ENGINEERS AND LAND SURVEYORS
2100 State Street, Granite City, Illinois 62040
Phone: (618) 977-1400 / Fax: (618) 977-1404
1100 North Research Drive, Edwardsville, Illinois 62025-2648
Phone: (618) 658-0908 / Fax: (618) 658-0944
320 N. Fourth St., Suite 200, St. Louis, Missouri 63102
Phone: (314) 241-4444 / Fax: (314) 241-4444
Registered Professional Service Corporation License No. 154-003089

COMPLETION DATE OF FIELD WORK PERFORMED				
LAND SURVEY: 9-18-2008	ROW STAKING:			
ILLINOIS DEPARTMENT OF TRANSPORTATION PLAT OF HIGHWAYS FAP ROUTE 600 (IL 159) SECTION 60-(30,31,128)-3 MADISON COUNTY JOB NO. R-98-011-04 CONTROL POINTS - CROSS TIES				
SCALE: N.T.S.	SHEET 34 OF 34			
ILLINOIS DEPARTMENT OF TRANSPORTATION DIVISION OF HIGHWAYS/REGION 5/DISTRICT 8 1102 EASTPORT PLAZA DRIVE COLLINSVILLE, ILLINOIS 62234-6198				
F.A. RTE.	SECTION	COUNTY	TOTAL SHEETS	SHEET NO.
600	60-130,31,128-3	MADISON	529	1329
FED. ROAD DIST. NO.		ILLINOIS FED. AID PROJECT		CONTRACT NO. 76666

053607 JGD

PLOT DATE: 4-12-2011