

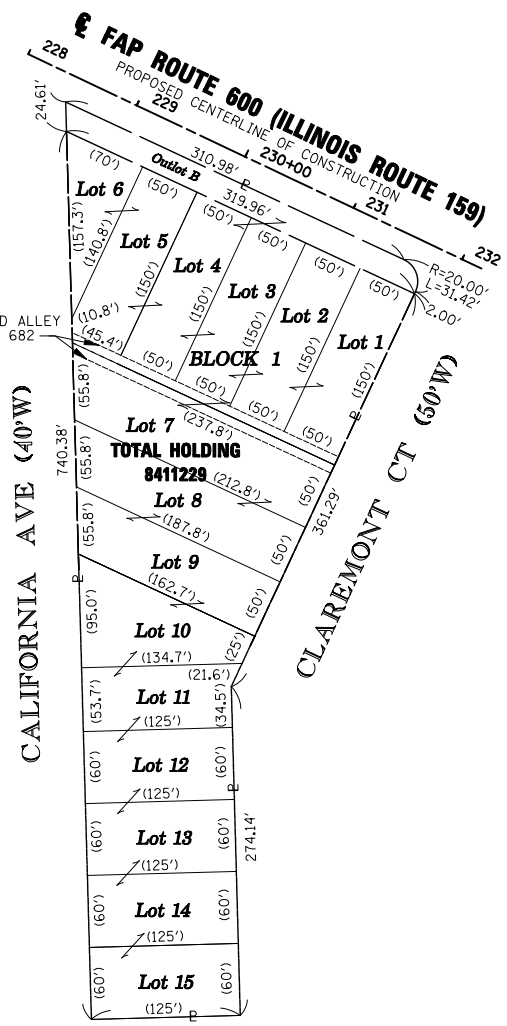
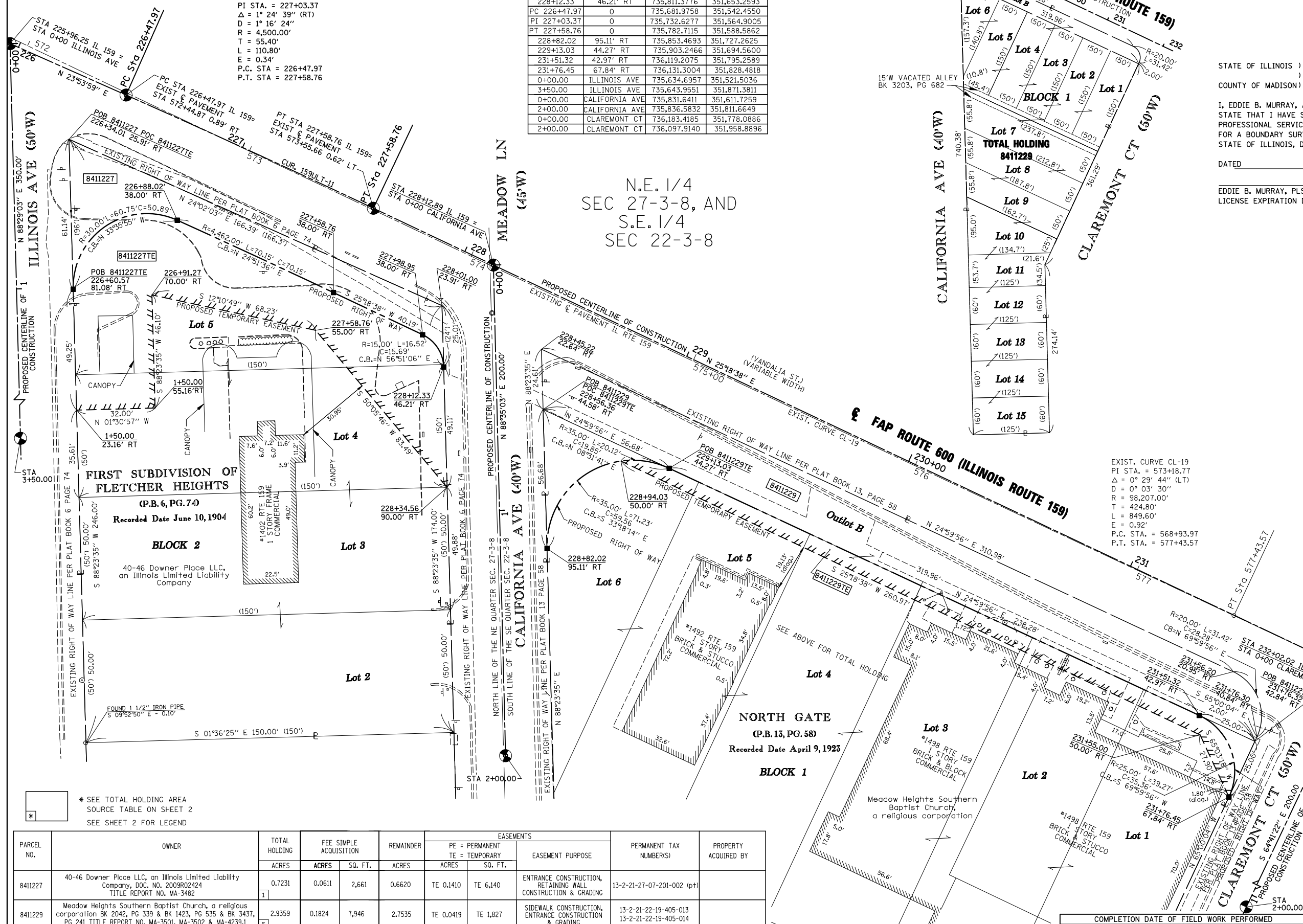
PART OF THE N.E. 1/4 OF SECTION 27, AND PART OF THE S.E. 1/4 OF SECTION 22, T. 3 N., R. 8 W. OF THE 3RD P.M., IN MADISON COUNTY, ILLINOIS

SEE BASIS OF COORDINATES AND BEARINGS STATEMENT ON SHEET 2

COORDINATE TABLE			
STATION	OFFSET	NORTH	EAST
226+60.57	81.08' RT	735,660.4306	351,621.6070
226+88.02'	38.00' RT	735,702.8166	351,593.4474
227+58.76	38.00' RT	735,766.4657	351,622.9383
227+98.95	38.00' RT	735,802.7963	351,640.1198
228+12.33	46.21' RT	735,811.3776	351,653.2593
PC 226+47.97	0	735,681.9758	351,542.4550
PI 227+03.37	0	735,732.6277	351,564.9005
PT 227+58.76	0	735,782.7115	351,588.5862
228+82.02	95.11' RT	735,853.4693	351,727.2625
229+13.03	44.27' RT	735,903.2466	351,694.5600
231+51.32	42.97' RT	736,119.2075	351,795.2589
231+76.45	67.84' RT	736,131.3004	351,828.4818
0+00.00	ILLINOIS AVE	735,634.6957	351,521.5036
3+50.00	ILLINOIS AVE	735,643.9551	351,871.3811
0+00.00	CALIFORNIA AVE	735,831.6411	351,611.7259
2+00.00	CALIFORNIA AVE	735,836.5832	351,811.6649
0+00.00	CLAREMONT CT	736,183.4185	351,778.0886
2+00.00	CLAREMONT CT	736,097.9140	351,958.8896

PROP. CURVE 159ULT-11  
 PI STA. = 227+03.37  
 $\Delta = 1^\circ 24' 39''$  (RT)  
 $D = 1^\circ 16' 24''$   
 $R = 4,500.00'$   
 $T = 55.40'$   
 $L = 110.80'$   
 $E = 0.34'$   
 P.C. STA. = 226+47.97  
 P.T. STA. = 227+58.76

N.E. 1/4  
 SEC 27-3-8, AND  
 S.E. 1/4  
 SEC 22-3-8



EXIST. CURVE CL-19  
 PI STA. = 573+18.77  
 $\Delta = 0^\circ 29' 44''$  (LT)  
 $D = 0^\circ 03' 30''$   
 $R = 98,207.00'$   
 $T = 424.80'$   
 $L = 849.60'$   
 $E = 0.92'$   
 P.C. STA. = 568+93.97  
 P.T. STA. = 577+43.57

SPACE RESERVED FOR RECORDING OFFICER

STATE OF ILLINOIS )  
 ) SS  
 COUNTY OF MADISON )

I, EDDIE B. MURRAY, AN ILLINOIS PROFESSIONAL LAND SURVEYOR,  
 STATE THAT I HAVE SURVEYED THE PLAT OF HIGHWAY SHOWN HEREON AND THAT THIS  
 PROFESSIONAL SERVICE CONFORMS TO THE CURRENT ILLINOIS MINIMUM STANDARDS  
 FOR A BOUNDARY SURVEY FOR THE PROPOSED PARCEL(S) TO BE ACQUIRED BY THE  
 STATE OF ILLINOIS, DEPARTMENT OF TRANSPORTATION, SHOWN HEREON.

DATED \_\_\_\_\_  
 EDDIE B. MURRAY, PLS NO. 35-003126  
 LICENSE EXPIRATION DATE: 11/30/2010

INSERT  
 SURVEYORS  
 SEAL HERE



16141 SWINGLEY RIDGE RD, SUITE 300,  
 CHESTERFIELD, MO 63017  
 PHONE (636) 537-5585  
 REG. No 184002570

ILLINOIS DEPARTMENT OF TRANSPORTATION  
**PLAT OF HIGHWAYS**  
 FAP ROUTE 600 (IL 159)  
 SECTION 60-(30,31,128)-3  
 MADISON COUNTY  
 JOB NO. R-98-011-04  
 STATION 226+00 TO STATION 232+00

SCALE: 1" = 20'

ILLINOIS DEPARTMENT OF TRANSPORTATION  
 DIVISION OF HIGHWAYS/REGION 5/DISTRICT 8  
 1102 EASTPORT PLAZA DRIVE  
 COLLINSVILLE, ILLINOIS 62234-6198

F.A.P. RTE.	SECTION	COUNTY	TOTAL SHEETS	SHEET NO.
600	60-(30,31,128)-3	MADISON	529	344

COMPLETION DATE OF FIELD WORK PERFORMED \_\_\_\_\_  
 LAND SURVEY: \_\_\_\_\_ ROW STAKING: \_\_\_\_\_  
 FED. ROAD DIST. NO. \_\_\_\_\_ ILLINOIS FED. AID PROJECT \_\_\_\_\_

\* SEE TOTAL HOLDING AREA  
 SOURCE TABLE ON SHEET 2  
 SEE SHEET 2 FOR LEGEND

PARCEL NO.	OWNER	TOTAL HOLDING ACRES	FEE SIMPLE ACQUISITION ACRES	REMAINDER ACRES	EASEMENTS		PERMANENT TAX NUMBER(S)	PROPERTY ACQUIRED BY	
					PE = PERMANENT ACRES	TE = TEMPORARY ACRES			
8411227	40-46 Downer Place LLC, an Illinois Limited Liability Company, DOC. NO. 2009R02424 TITLE REPORT NO. MA-3482	0.7231	0.0611	2,661	0.6620	TE 0.1410	TE 6.140	ENTRANCE CONSTRUCTION, RETAINING WALL CONSTRUCTION & GRADING	13-2-21-27-07-201-002 (pt)
8411229	Meadow Heights Southern Baptist Church, a religious corporation BK 2042, PG 339 & BK 1423, PG 535 & BK 3437, PG 241 TITLE REPORT NO. MA-3501, MA-3502 & MA-4239.1	2.9359	0.1824	7,946	2,7535	TE 0.0419	TE 1,827	SIDEWALK CONSTRUCTION, ENTRANCE CONSTRUCTION & GRADING	13-2-21-22-19-405-013 13-2-21-22-19-405-014