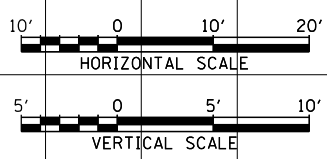
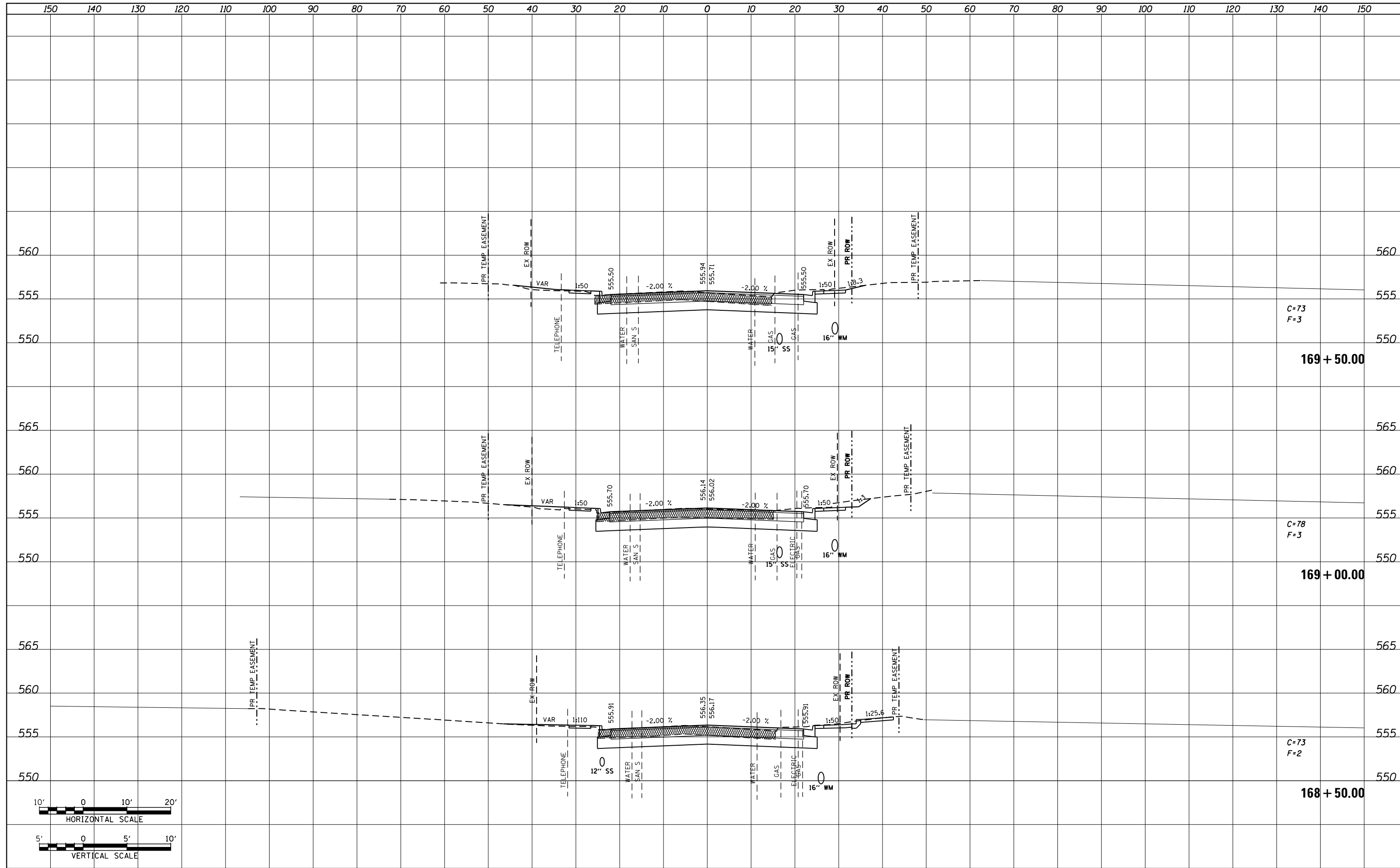


DATE	
BY	
NO.	
ORIGINAL SURVEY	
SURVEYED	
PLOTTED	
TEMPLATE	
AREAS CHECKED	
NOTE BOOK	
AREAS CHECKED	

DATE	
BY	
NO.	
ORIGINAL SURVEY	
SURVEYED	
PLOTTED	
TEMPLATE	
AREAS CHECKED	
NOTE BOOK	
AREAS CHECKED	



FILE NAME = P:\Projects\913501\CADD\GN\0876885-sht-xsc-15.dgn	USER NAME = default	DESIGNED - AGF	REVISOR -	STATE OF ILLINOIS DEPARTMENT OF TRANSPORTATION	IL ROUTE 159 MAINLINE CROSS SECTIONS	F.A.P. RTE. 600	SECTION 60-(30,31,128)-3	COUNTY MADISON	TOTAL SHEETS 529	SHEET NO. 371	
MODELNAME	PLOT SCALE = 20.0000' / in.	CHECKED - CLS	REVISOR -			SCALE: H ₁ 1"=10'	SHEET 2 OF 72 SHEETS	STA. 168+50.00 TO STA. 169+50.00	CONTRACT NO. 76885		
	PLOT DATE = 1/25/2013	DATE - 01/25/2013	REVISOR -			ILLINOIS FED. AID PROJECT					