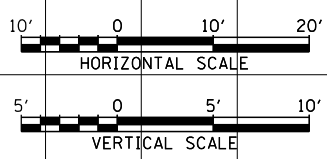
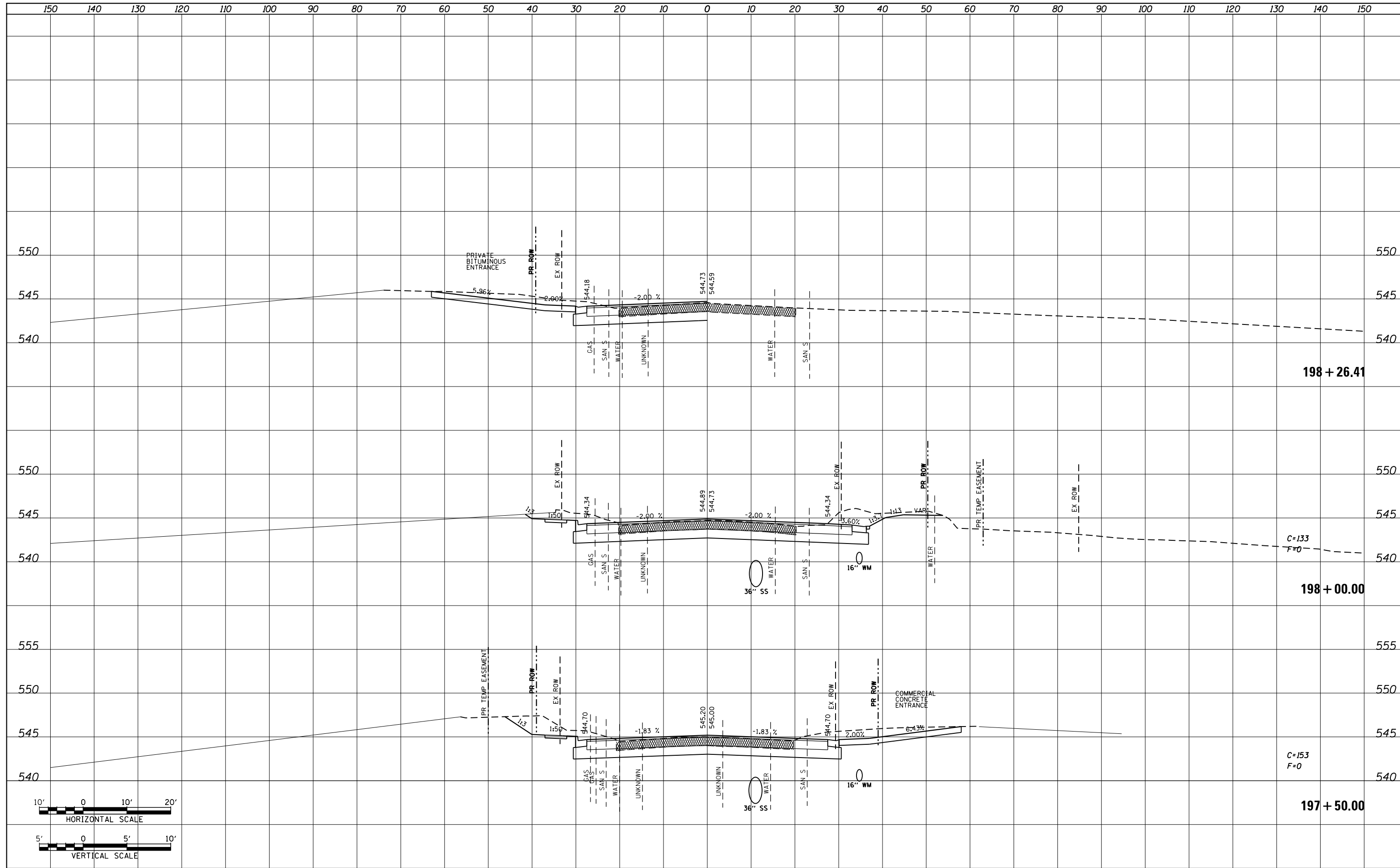


DATE	
BY	
SURVEYED	
PLOTTED	
TEMPLATE	
NOTE BOOK	
AREAS CHECKED	
NO.	

DATE	
BY	
SURVEYED	
PLOTTED	
TEMPLATE	
NOTE BOOK	
AREAS CHECKED	
NO.	



FILE NAME = P:\Projects\913501\CADD\GN\0876885-sht-xsc-15.dgn	USER NAME = default	DESIGNED - AGF	REVISED -	STATE OF ILLINOIS DEPARTMENT OF TRANSPORTATION	IL ROUTE 159 MAINLINE CROSS SECTIONS			F.A.P. RTE. 600	SECTION 60-(30,31,128)-3	COUNTY MADISON	TOTAL SHEETS 529	SHEET NO. 399
MODELNAME	PLOT SCALE = 20.0000' / in.	CHECKED - CLS	REVISED -		SCALE: H ₁ 1"=10' V ₁ 1"=5'	SHEET 30 OF 72 SHEETS	STA. 197+50.00 TO STA. 198+26.41	CONTRACT NO. 76885		ILLINOIS FED. AID PROJECT		
	PLOT DATE = 1/25/2013	DATE - 01/25/2013	REVISED -									