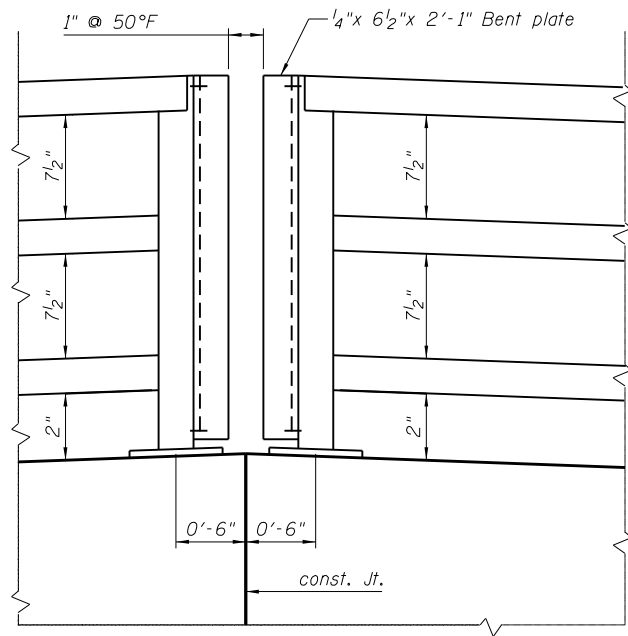
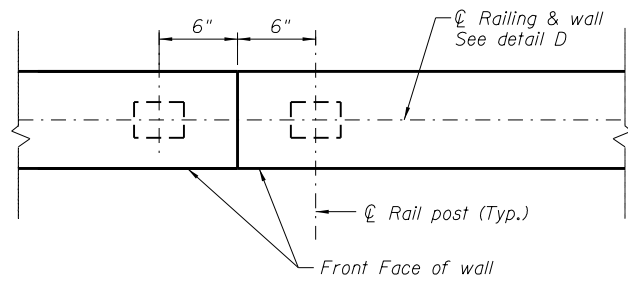


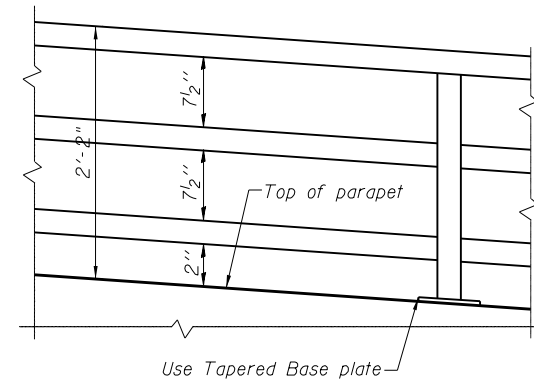
STATE OF ILLINOIS  
DEPARTMENT OF TRANSPORTATION



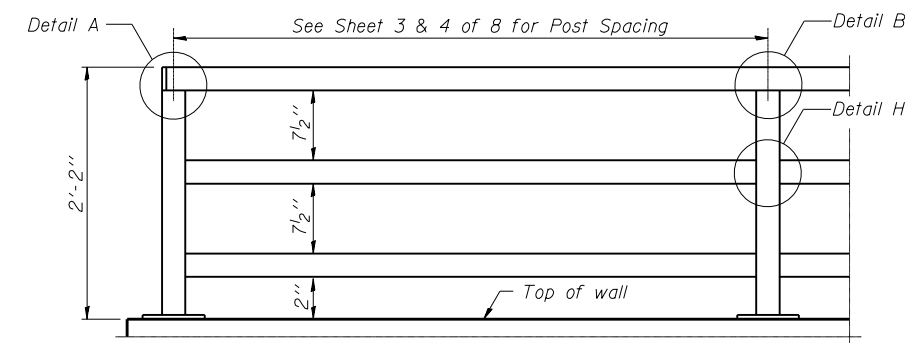
ELEVATION



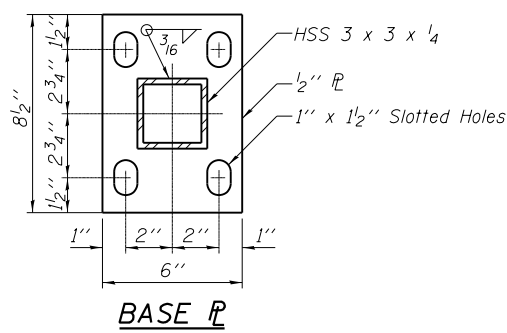
PLAN  
DETAIL CC



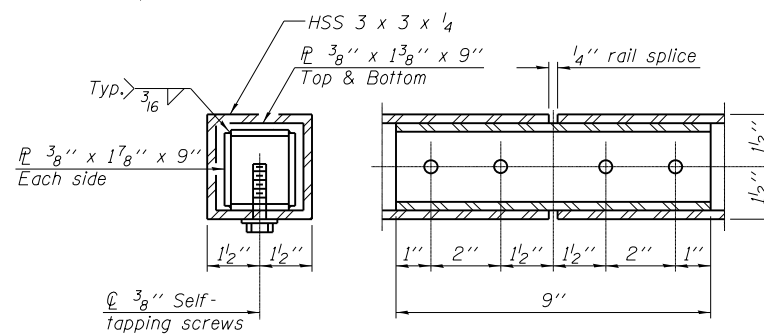
PARAPET RAILING ELEVATION  
(Inclined top of wall)



PARAPET RAILING  
ELEVATION  
(Inside Face of Three Element Rail)

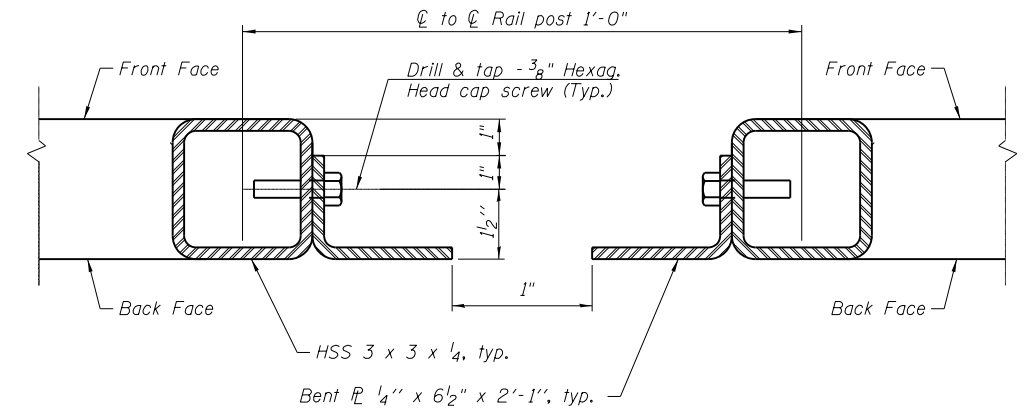


BASE PLATE

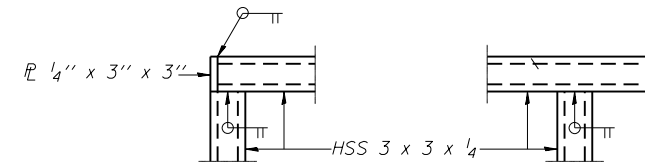


RAIL SPLICE

DESIGNED - KRG
CHECKED - MJK
DRAWN - GSJ
CHECKED - MJK

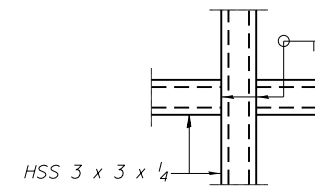


DETAIL D

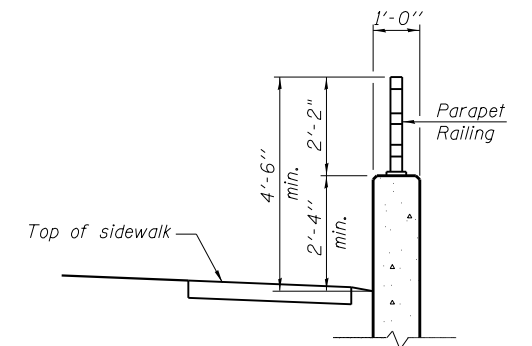


DETAIL A

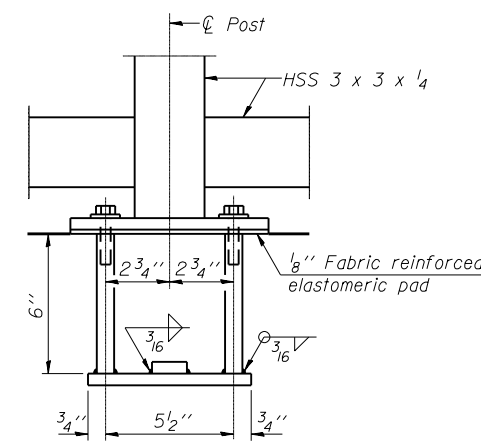
DETAIL B



DETAIL H

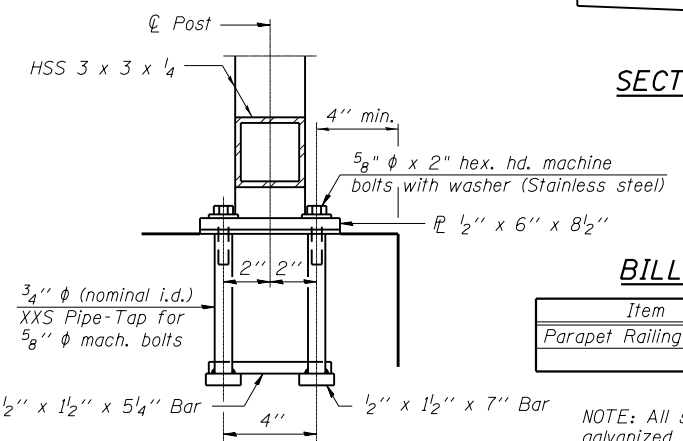


SECTION THRU PARAPET



ANCHOR BOLT DETAILS

In lieu of the cast-in-place anchor device shown, the Contractor has the option of drilling and setting 5/8 inch diameter anchor rods according to Article 509.06 of the Standard Specifications. Embedment shall be according to the manufacturer's specifications.



BILL OF MATERIAL

Item	Unit	Quantity
Parapet Railing	Foot	76

NOTE: All steel railing elements shall be galvanized according to article 509.05 of the Standard Specifications.

HHCS designates Hexagonal head cap screws  
HHS designates hollow structural section.

PARAPET RAILING

SHEET NO. 7 8 SHEETS	F.A.P. RTE.	SECTION	COUNTY	TOTAL SHEETS	SHEET NO.
	600	60-(30,31,128)-3	Madison	529	517
FED. ROAD DIST. NO.			ILLINOIS	FED. AID PROJECT	
			CONTRACT NO. 76B85		

MID-AMERICA ENGINEERING SERVICES