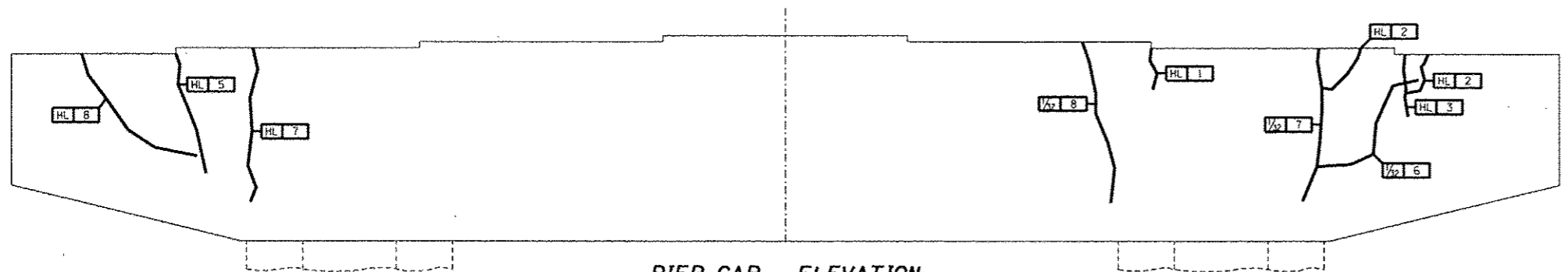
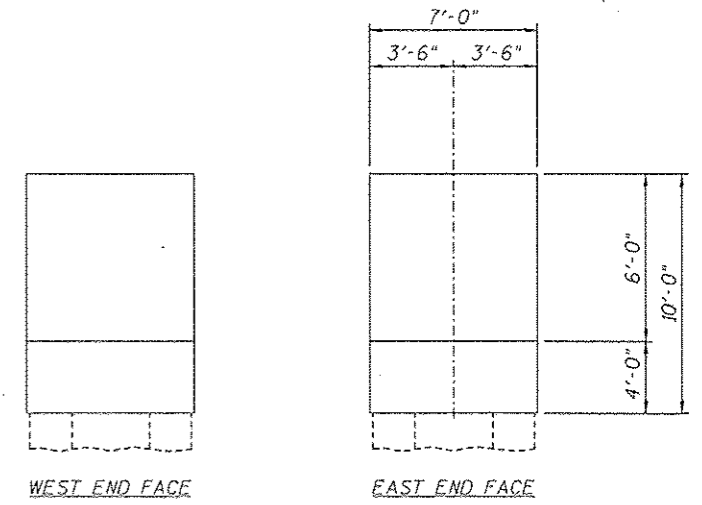


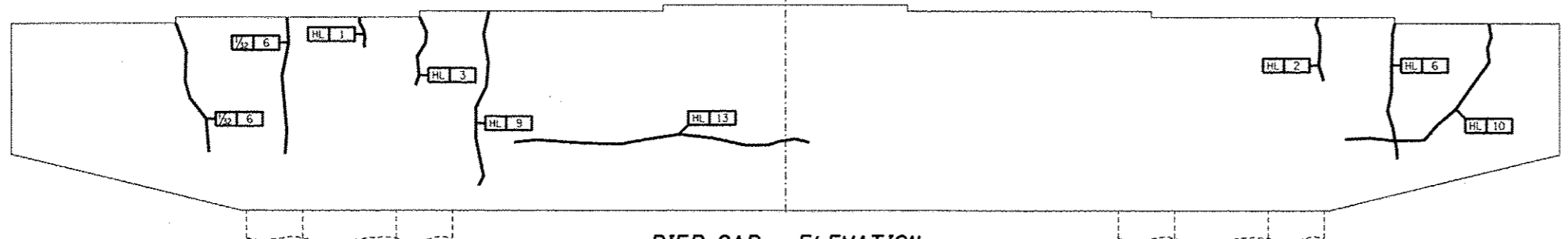
PIER CAP - PLAN - PIER 7



PIER CAP - ELEVATION
Looking North

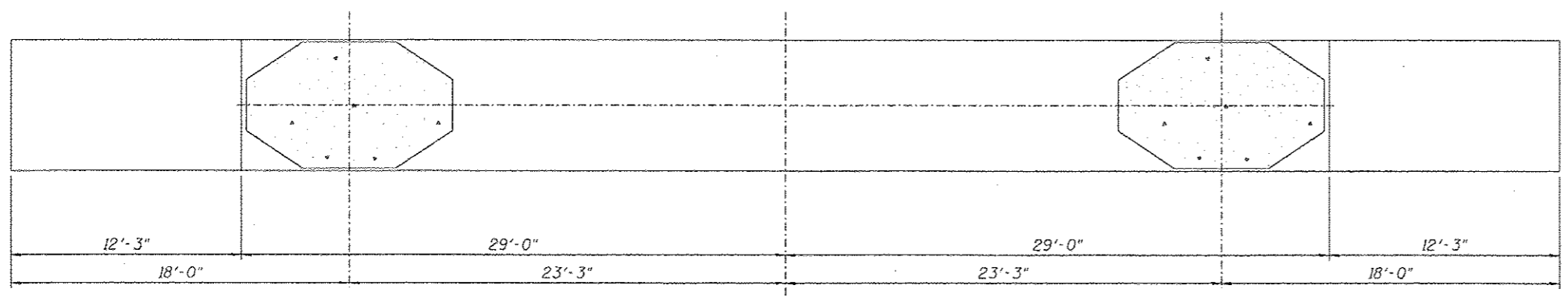


PIER CAP - END ELEVATIONS



PIER CAP - ELEVATION
Looking South

CRACKS < 1/16"
 Hairline Cracks (HL) or
 Cracks < 1/16" not to be Sealed.



PIER CAP - UNDERSIDE

DESIGNED -	EXAMINED	DATE	STATE OF ILLINOIS DEPARTMENT OF TRANSPORTATION	REPAIRS TO - PIER NUMBER 7 - CAP STRUCTURE NO. 060-0255		F.A.P. RTE.	SECTION	COUNTY	TOTAL SHEETS	SHEET NO.
CHECKED -	ENGINEER OF STRUCTURAL SERVICES			304	100B-105-1	MADISON	58	37		
DRAWN Rod	PASSED			SHEET NO. 27 OF 48 SHEETS		CONTRACT NO. 76E73		ILLINOIS FED. AID PROJECT		
CHECKED MNM	ENGINEER OF BRIDGES AND STRUCTURES									