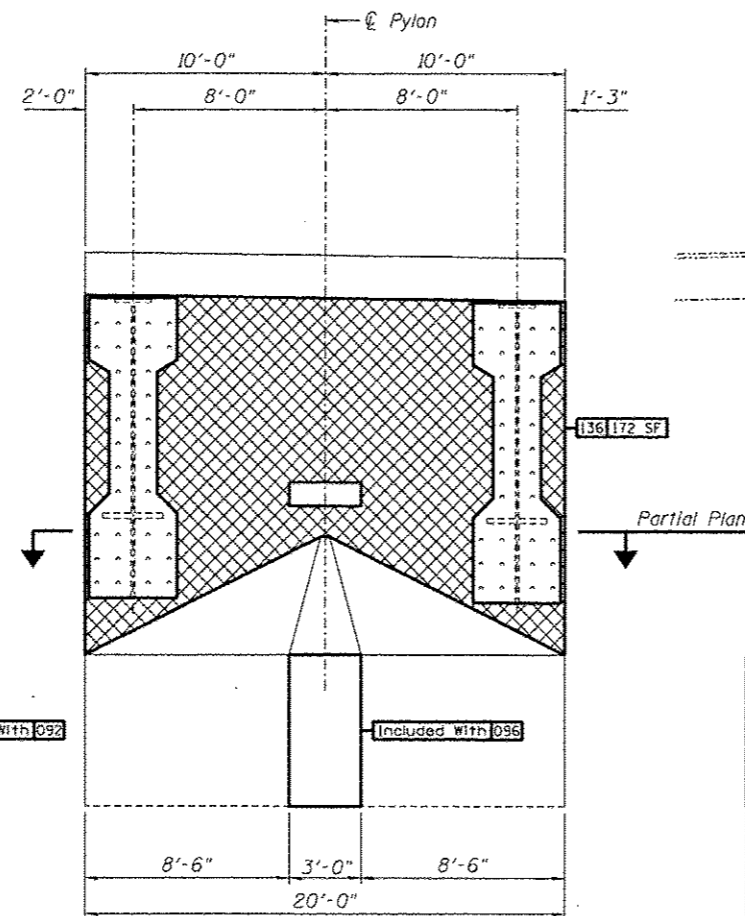
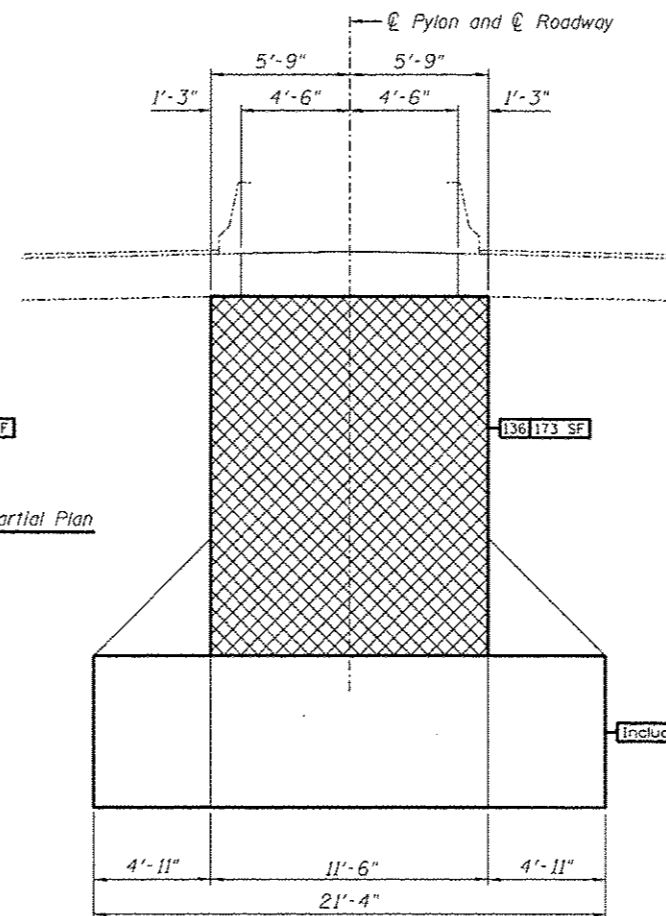


MISSOURI PYLON - 476.25 to 492.92
Looking North

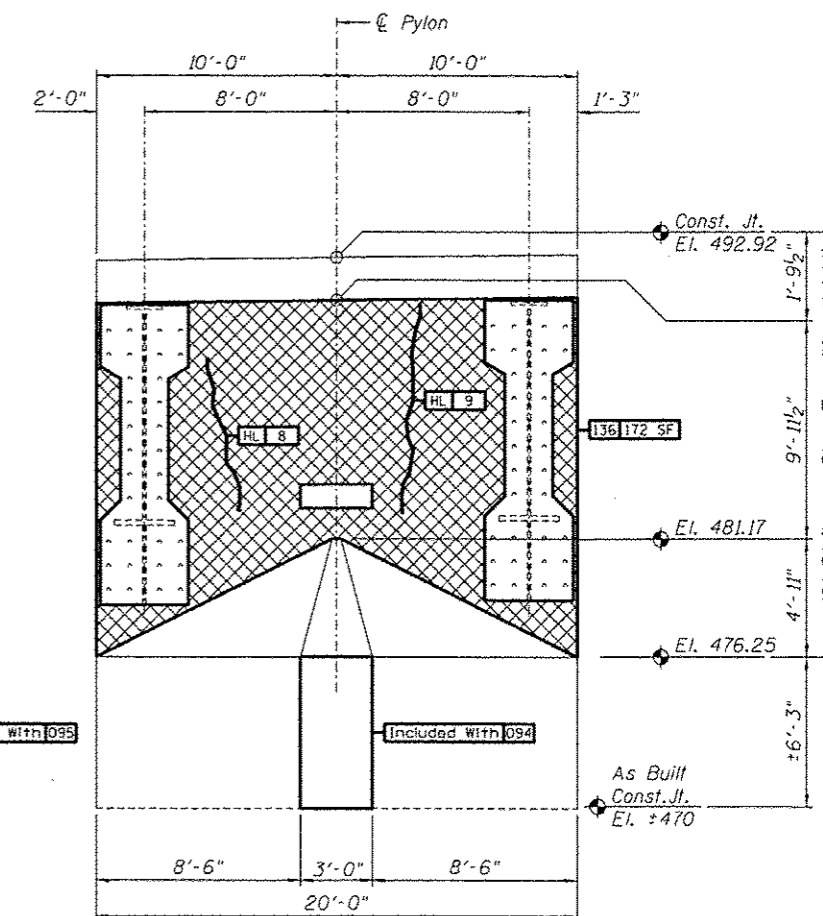


MISSOURI PYLON - 476.25 to 492.92
Looking East

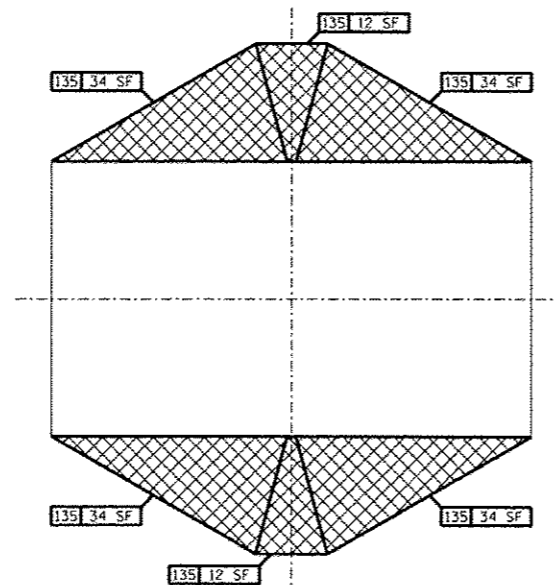
Partial Plan



MISSOURI PYLON - 476.25 to 492.92
Looking South



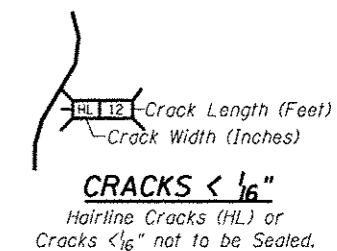
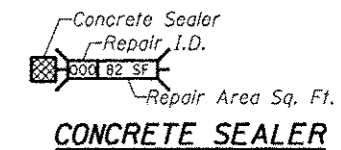
MISSOURI PYLON - 476.25 to 492.92
Looking West



PARTIAL PLAN
MISSOURI PYLON - 476.25 to 481.17
(Showing Sloping Surfaces)

REPAIRS LIST - PIER 9 - COLUMN BELOW BRIDGE DECK

I.D.	Description	Pay Item	Units	Quantity
135	Top Mast Section Sloping Surfaces	Concrete Sealer	SQ. FT.	160
136	Top Mast Section Vertical Surfaces	Concrete Sealer	SQ. FT.	688



DESIGNED -	EXAMINED	DATE
CHECKED -	ENGINEER OF STRUCTURAL SERVICES	
DRAWN Rod	PASSED	
CHECKED MNM	ENGINEER OF BRIDGES AND STRUCTURES	

STATE OF ILLINOIS
DEPARTMENT OF TRANSPORTATION

REPAIRS TO - CSS - MISSOURI PYLON (PIER 9) - (476.25 to 492.92)
STRUCTURE NO. 060-0255

F.A.P. RTE.	SECTION	COUNTY	TOTAL SHEETS	SHEET NO.
304	100B-10S-1	MADISON	58	42
CONTRACT NO. 76E73			ILLINOIS FED. AID PROJECT	