

STATE OF ILLINOIS
DEPARTMENT OF TRANSPORTATION
DIVISION OF HIGHWAYS

**PROPOSED
HIGHWAY PLANS**

FAI ROUTE 270
SECTION 60-(4,5)-1RS-4

MICRO-SURFACING
MADISON COUNTY

C-98-079-12

FAI RTE. 270	SECTION 60-(4,5)-1RS-4	COUNTY Madison	TOTAL SHEETS 42	SHEET NO. 1
ILLINOIS			CONTRACT NO. 76F86	

INDEX OF SHEETS

- 1 COVER SHEET
- 2 GENERAL NOTES
- 3 - 4 SUMMARY OF QUANTITIES
- 5 - 10 TYPICAL SECTIONS
- 11 - 13 SCHEDULE OF QUANTITIES
- 14 - 41 PLAN SHEETS
- 42 DETAILS

HIGHWAY STANDARDS

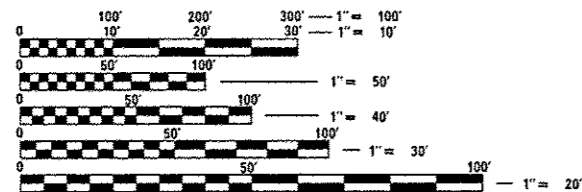
000001-06	701451-01
001006	701456-02
701400-06	701901-02
701401-07	780001-03
701406-06	781001-03
701411-08	

COMMITMENTS

NONE

BEGIN PROJECT STA. 258+00

END PROJECT STA. 885+66

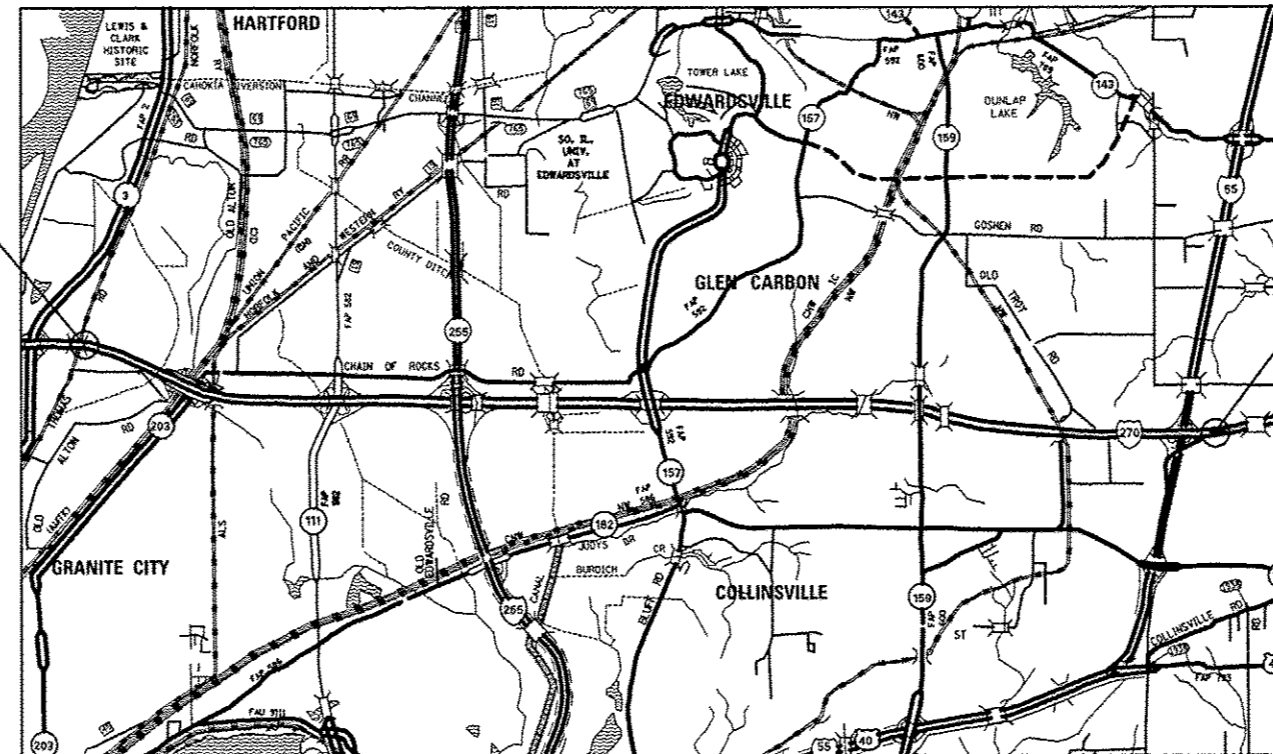


FULL SIZE PLANS HAVE BEEN PREPARED USING STANDARD ENGINEERING SCALES. REDUCED SIZED PLANS WILL NOT CONFORM TO STANDARD SCALES. IN MAKING MEASUREMENTS ON REDUCED PLANS, THE ABOVE SCALES MAY BE USED.

J.U.L.I.E.
JOINT UTILITY LOCATION INFORMATION FOR EXCAVATION
1-800-892-0123
OR 811

PROJECT ENGINEER - TIM PADGETT (618) 346-3325
PROJECT MANAGER - LIZ BURNSIDE (618) 346-3196

CONTRACT NO. 76F86



FAI 270 ADT

2011 ADT = 55,200 (ACTUAL)
2034 ADT = 69,400 (EST)
SU = 2.5%, MU = 15.8%



GROSS LENGTH = 62,766 FT. = 11.89 MILE
NET LENGTH = 60,222 FT. = 11.41 MILE



STATE OF ILLINOIS
DEPARTMENT OF TRANSPORTATION
DIVISION OF HIGHWAYS

SUBMITTED March 21 2013
[Signature]
DEPUTY DIRECTOR OF HIGHWAYS, REGION ENGINEER

April 26 2013
John D. Baranzelli P.E.
ENGINEER OF DESIGN AND ENVIRONMENT

April 26 2013
Cher Osham P.E.
DIRECTOR OF HIGHWAYS, CHIEF ENGINEER

**PRINTED BY THE AUTHORITY
OF THE STATE OF ILLINOIS**