

PROPOSED HIGHWAY PLANS

VARIOUS ROUTES SECTION D9 TRAFFIC SIGNAL 2013-1

SIGNAL WIRE REPLACEMENT SALINE & FRANKLIN COUNTIES

F.A. RTE.	SECTION	COUNTY	TOTAL SHEETS	SHEET NO.
VAR D9 TRAFFIC SIGNALS 2013-1			11	1
ILLINOIS			CONTRACT NO. 78346	
- SALINE, FRANKLIN				

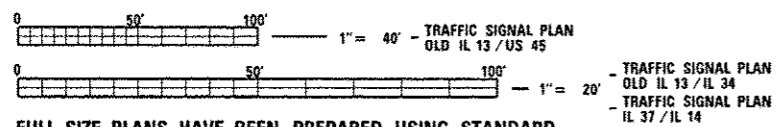
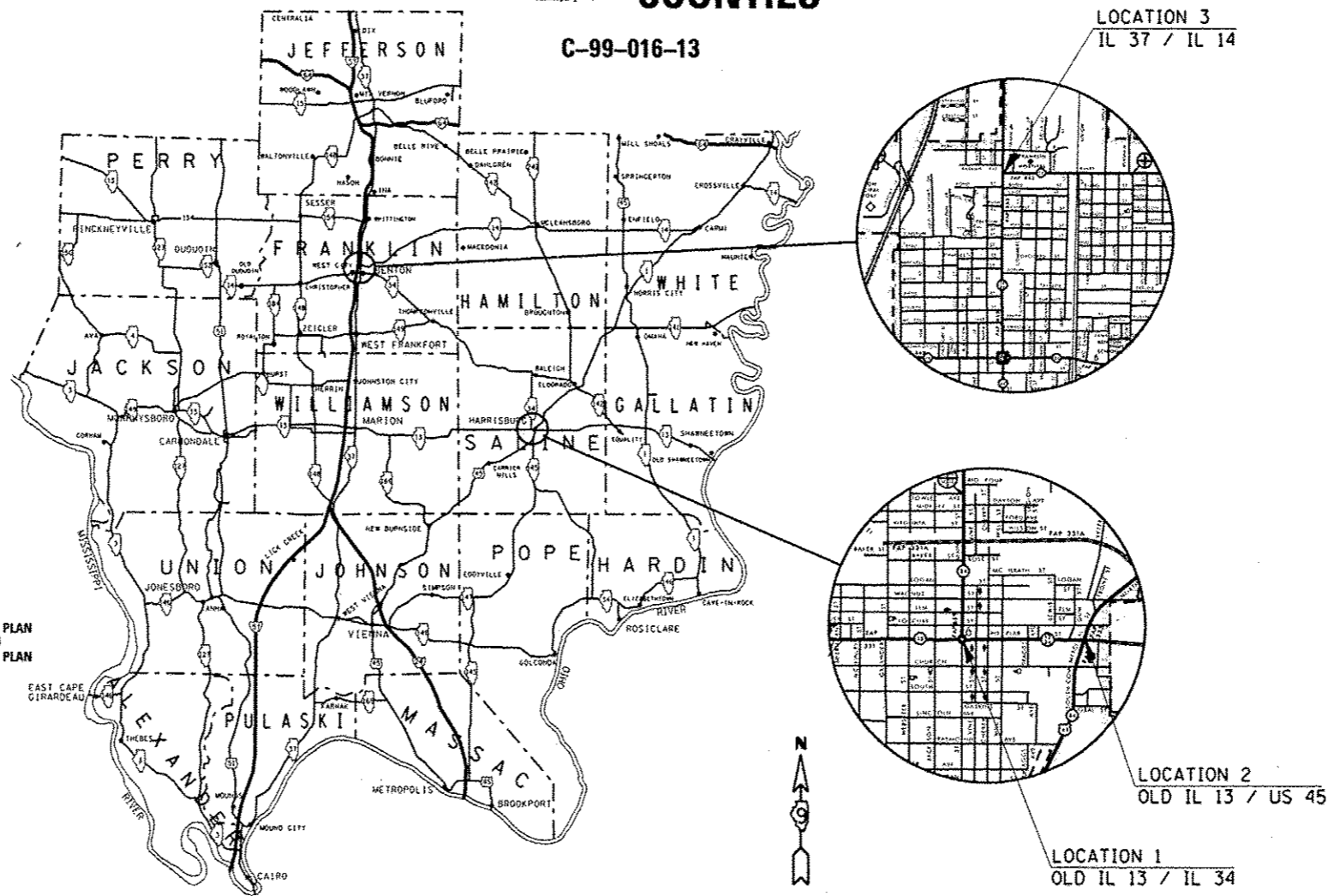
FOR INDEX OF SHEETS, SEE SHEET NO. 2
FOR SUMMARY OF QUANTITIES, SEE SHEET NO. 3

TRAFFIC DATA

OLD IL 13 WEST OF IL 34 - 11,700 (2012) 7.5% TRUCKS
OLD IL 13 EAST OF IL 34 - 12,100 (2012) 7% TRUCKS
IL 34 NORTH OF OLD IL 13 - 7,300 (2012) 4.5% TRUCKS
IL 34 SOUTH OF OLD IL 13 - 4,250 (2012) 3.4% TRUCKS

OLD IL 13 WEST OF US 45 - 12,100 (2012) 7% TRUCKS
OLD IL 13 EAST OF US 45 - 3,450 (2012) 7.8% TRUCKS
US 45 NORTH OF OLD IL 13 - 15,400 (2012) 12% TRUCKS
US 45 SOUTH OF OLD IL 13 - 17,600 (2012) 9.5% TRUCKS

IL 37 SOUTH OF IL 14 - 10,600 (2012)
IL 37 NORTH OF IL 14 - 8,500 (2012)
IL 14 EAST OF IL 37 - 6,150 (2012)



FULL SIZE PLANS HAVE BEEN PREPARED USING STANDARD ENGINEERING SCALES. REDUCED SIZED PLANS WILL NOT CONFORM TO STANDARD SCALES. IN MAKING MEASUREMENTS ON REDUCED PLANS, THE ABOVE SCALES MAY BE USED.

J.U.L.I.E.
JOINT UTILITY LOCATION INFORMATION FOR EXCAVATION
1-800-892-0123
OR 811

PROJECT ENGINEER SEAN GREENLEE
PROJECT MANAGER SUSAN POE

CONTRACT NO. 78346

STATE OF ILLINOIS
DEPARTMENT OF TRANSPORTATION
DIVISION OF HIGHWAYS

SUBMITTED *March 13 2013*

John D. Baranzelli
DEPUTY DIRECTOR OF HIGHWAYS, REGION ENGINEER

April 26 2013
John D. Baranzelli P.E.
ENGINEER OF DESIGN AND ENVIRONMENT

April 26 2013
Omer Osman P.E.
DIRECTOR OF HIGHWAYS, CHIEF ENGINEER

PRINTED BY THE AUTHORITY
OF THE STATE OF ILLINOIS

INDEX OF SHEETS

- 1 COVER SHEET
- 2 GENERAL NOTES, INDEX OF SHEETS, STANDARDS
- 3 SUMMARY OF QUANTITIES
- 4 EXISTING TRAFFIC SIGNAL PLAN (OLD IL 13 / IL 34) LOCATION 1
- 5 TRAFFIC SIGNAL CABLE DIAGRAM (OLD IL 13 / IL 34) LOCATION 1
- 6 EXISTING TRAFFIC SIGNAL PLAN (OLD IL 13 / US 45) LOCATION 2
- 7 TRAFFIC SIGNAL CABLE DIAGRAM (OLD IL 13 / US 45) LOCATION 2
- 8 EXISTING TRAFFIC SIGNAL PLAN (IL 37 / IL 14) LOCATION 3
- 9 TRAFFIC SIGNAL CABLE DIAGRAM (IL 37 / IL 14) LOCATION 3
- 10 DETAILS - PHASE DESIGNATION DIAGRAMS
- 11 DETAILS - PHASE DESIGNATION DIAGRAMS; WIRING DIAGRAMS FOR LIGHTING

GENERAL NOTES

ALL NON-ESSENTIAL ELECTRIC CABLE SHALL BE REMOVED FROM EXISTING CONDUIT THAT IS TO BE REUSED FOR INSTALLATION OF PROPOSED ELECTRIC CABLE. THIS WORK WILL BE CONSIDERED INCLUDED IN THE PROPOSED ELECTRIC CABLE PAY ITEM.

SHIELDED CABLE TO LOOP LEADS SHALL BE GROUNDED AT THE CONTROLLER TERMINAL ONLY.

THE CONTRACTOR SHALL NOTIFY THE ENGINEER OF TRAFFIC OPERATIONS 72 HOURS PRIOR TO THE SHUT-DOWN OR CUTTING OF EXISTING DETECTOR LOOPS.

STANDARDS

- 000001-06 STANDARD SYMBOLS, ABBREVIATIONS & PATTERNS
- 001006 DECIMAL OF AN INCH AND OF A FOOT
- 701001-02 OFF-ROAD OPERATIONS, 2L, 2W, MORE THAN 15' AWAY
- 701006-04 OFF-ROAD OPERATIONS, 2L, 2W, MORE THAN 15' TO 24" FROM PAVEMENT EDGE
- 701101-03 OFF-ROAD OPERATIONS, MULTILANE, 15' TO 24" FROM PAVEMENT EDGE
- 701106-02 OFF-ROAD OPERATIONS, MULTILANE, MORE THAN 15' AWAY
- 701701-08 URBAN LANE CLOSURE, MULTILANE INTERSECTION
- 701901-02 TRAFFIC CONTROL DEVICES
- 857001-01 STANDARD PHASE DESIGNATION DIAGRAMS AND PHASE SEQUENCES

COMMITMENTS

NONE

Prepared By: *Joe Zdaniewicz*
DISTRICT STUDIES & PLANS ENGINEER

Examined By: *Paul E. [Signature]*
DISTRICT LAND ACQUISITION ENGINEER

Examined By: *Carrie Nelson*
DISTRICT PROGRAM DEVELOPMENT ENGINEER

Examined By: *Keel [Signature]*
DISTRICT OPERATIONS ENGINEER

Examined By: *K. [Signature]*
DISTRICT PROJECT IMPLEMENTATION ENGINEER

Examined By: *Douglas [Signature]*
DISTRICT CONSTRUCTION ENGINEER

Examined By: *Bruce [Signature]*
DISTRICT MATERIALS ENGINEER

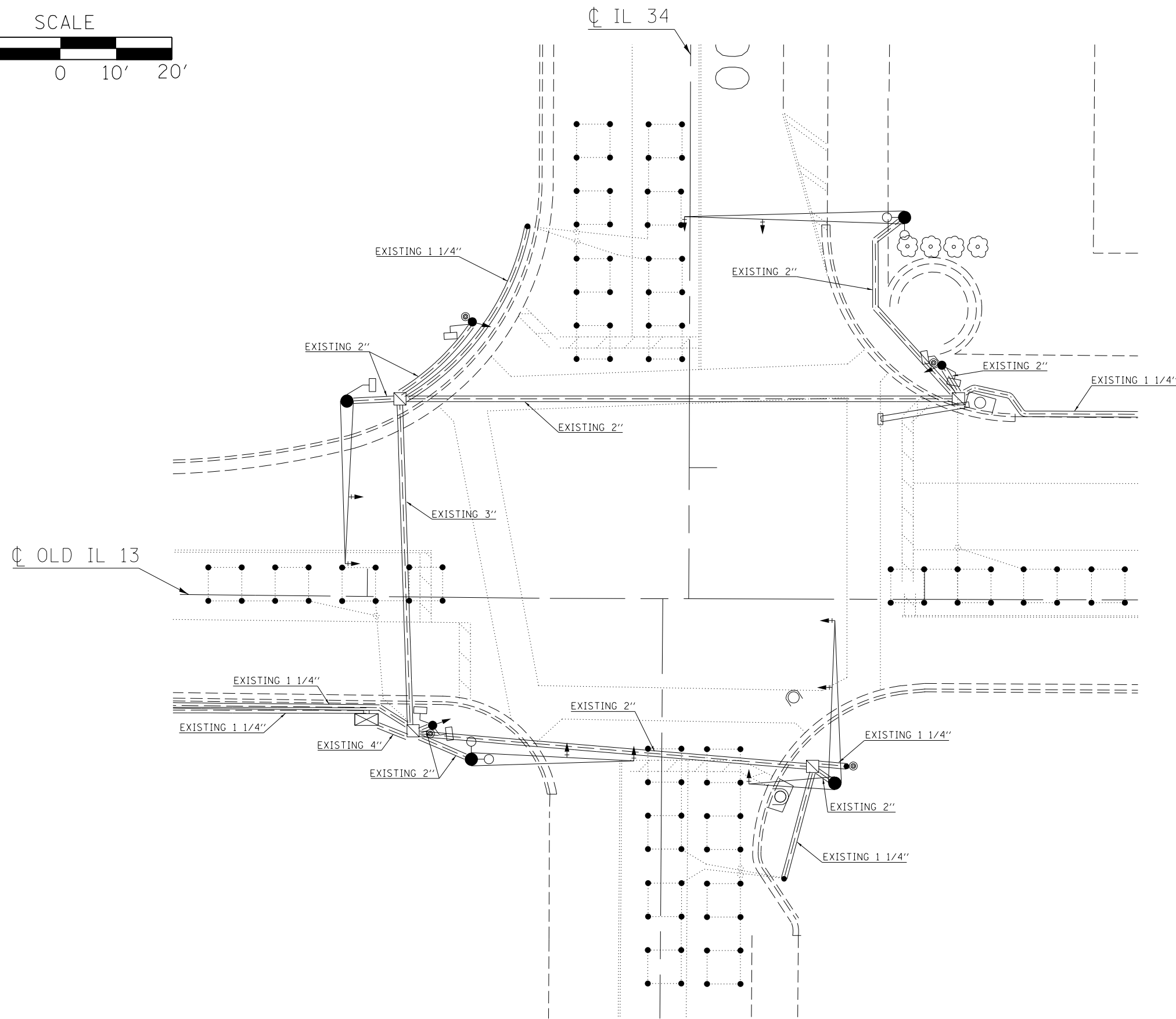
* - SALINE, FRANKLIN

FILE NAME *	USER NAME * greenleesm	DESIGNED -	REVISED -	STATE OF ILLINOIS DEPARTMENT OF TRANSPORTATION	GENERAL NOTES, INDEX OF SHEETS AND STANDARDS			F.A. RTE.	SECTION	COUNTY	TOTAL SHEETS	SHEET NO.		
c:\pwork\pwork\greenleesm\d0329439\70346-ah-plant.dgn		DRAWN -	REVISED -		SCALE:	SHEET NO.	OF SHEETS	STA.	TO STA.	VAR	D9 TRAFFIC SIGNAL 2013-1	*	11	2
		CHECKED -	REVISED -											
		DATE -	REVISED -											
	PLOT SCALE = 40,0000' / 1" =													
	PLOT DATE = 3/4/2013													
											CONTRACT NO. 78346			
											ILLINOIS FED. AID PROJECT			

40-2-1-124

SUMMARY OF QUANTITIES				CONSTRUCTION CODE - 0021		
CODE NO.	ITEM	UNIT	FUNDING COUNTY	100% STATE		
				SALINE	SALINE	FRANKLIN
				TRAFFIC SIGNALS	TRAFFIC SIGNALS	TRAFFIC SIGNALS
				URBAN	URBAN	URBAN
			TOTAL QUANTITY	OLD IL 13 / IL34	OLD IL 13 / US 45	IL 37 / IL 14
67100100	MOBILIZATION	L SUM	1	0.34	0.33	0.33
70102635	TRAFFIC CONTROL AND PROTECTION, STANDARD 701701	L SUM	1.0	0.34	0.33	0.33
81702450	ELECTRIC CABLE IN CONDUIT, 600V (XLP-TYPE USE) 3-1/C NO. 10	FOOT	755	396	359	
87301225	ELECTRIC CABLE IN CONDUIT, SIGNAL NO. 14 3C	FOOT	947	463		484
87301245	ELECTRIC CABLE IN CONDUIT, SIGNAL NO. 14 5C	FOOT	1936	752	854	330
87301255	ELECTRIC CABLE IN CONDUIT, SIGNAL NO. 14 7C	FOOT	1563	1003	131	429
87301265	ELECTRIC CABLE IN CONDUIT, SIGNAL NO. 14 9C	FOOT	819		723	96
87301305	ELECTRIC CABLE IN CONDUIT, LEAD-IN, NO. 14 1 PAIR	FOOT	4562	1915	2375	272
Z0033050	COAXIAL CABLE IN CONDUIT	FOOT	79	79		

a



LEGEND

	EXISTING MAST ARM
	EXISTING SIGNAL POLE
	EXISTING BRACKET MOUNTED FACEPLATE
	EXISTING MAST ARM MOUNTED FACEPLATE
	EXISTING TRAFFIC SIGNAL CONTROLLER
	EXISTING HANDHOLE
	EXISTING CONDUIT
	EXISTING 5'X5' DETECTOR LOOP
	EXISTING 6'X6' DETECTOR LOOP
	EXISTING DETECTOR LOOP LINE
	EXISTING PEDESTRIAN PUSH BUTTON
	EXISTING PEDESTRIAN HEAD
	EXISTING 250 WATT SODIUM VAPOR LUMINAIRES ON MAST ARM ASSEMBLY POLE

FILE NAME =	USER NAME = \$USER\$	DESIGNED -	REVISED -
et:\pw\work\pwidot\kellykd\0329439\78346-sht-plan.dgn		DRAWN -	REVISED -
	PLOT SCALE = 20.0000' / in.	CHECKED -	REVISED -
\$MODELNAME\$	PLOT DATE = 3/13/2013	DATE -	REVISED -

**STATE OF ILLINOIS
DEPARTMENT OF TRANSPORTATION**

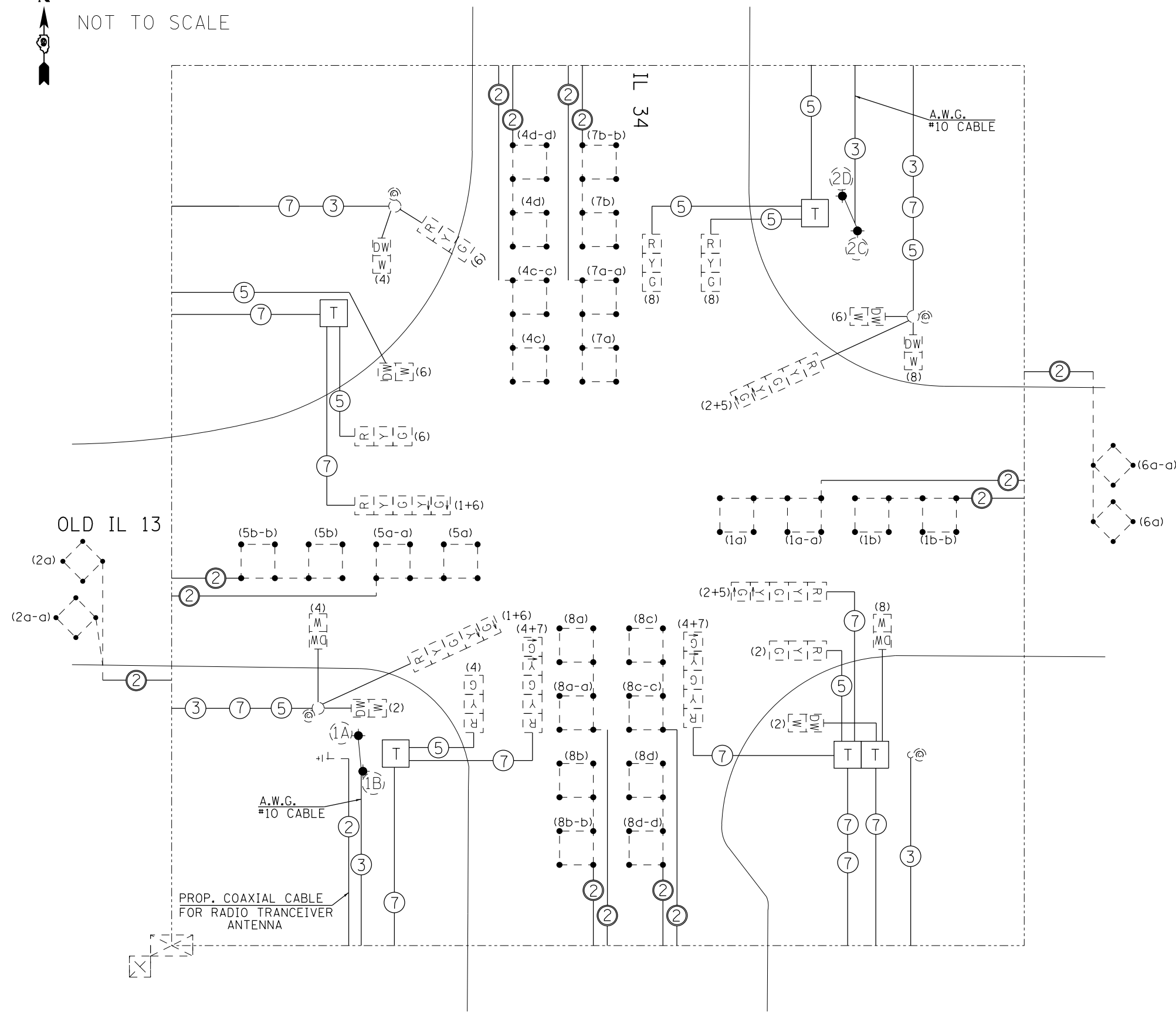
**TRAFFIC SIGNAL PLAN (OLD IL 13 / IL 34)
LOCATION 1**

SCALE: SHEET OF SHEETS STA. TO STA.

F.A. RTE.	SECTION	COUNTY	TOTAL SHEETS	SHEET NO.
VAR D9 TRAFFIC SIGNALS 2013-1			11	4
ILLINOIS FED. AID PROJECT			CONTRACT NO. 78346	



NOT TO SCALE



NOTES

ALL CABLES SHALL BE A.W.G. #14 UNLESS OTHERWISE NOTED.

ELECTRIC SERVICE IS SUPPLIED BY AMEREN CIPS.

ELECTRIC CABLE DENOTED AS #10, 3/C BEING INSTALLED TO THE COMBINATION MAST ARM POLES SHALL NOT GO THROUGH THE TERMINAL BLOCK BUT SHOULD BE SPLICED IN POLE. SEE STEEL COMB. MAST ARM ASSEMBLY AND POLE DETAIL.

PROPOSED 2/C ELECTRIC CABLE SHOWN IN CABLE DIAGRAM ARE PAID FOR IN FEET AS ELECTRIC CABLE IN CONDUIT, LEAD-IN, NO. 14 (1 PAIR).

LEGEND

- PEDESTRIAN PUSH BUTTON
- PEDESTRIAN SIGNAL HEAD
- TERMINAL BLOCK IN MAST ARM POLE BASE (SEE SPECIAL PROVISIONS).
- EXISTING 250 WATT SODIUM VAPOR LUMINAIRES ON MAST ARM ASSEMBLY POLE
- TRAFFIC SIGNAL CONTROLLER CABINET
- LIGHTING CONTROLLER, PEDESTAL MOUNTED, 240V, 60A
- INDICATES 2/C TWISTED, SHIELDED CABLE IN CONDUIT
- NUMBER IN CIRCLE INDICATES NUMBER OF CONDUCTORS IN THAT CABLE
- NUMBER IN PARENTHESIS INDICATES PHASE
- 5' X 5' DETECTOR LOOP WITH 2" CORE DRILLED CORNERS. NUMBER INDICATES PHASE, LOWER CASE LETTER INDICATES AMPLIFIER.

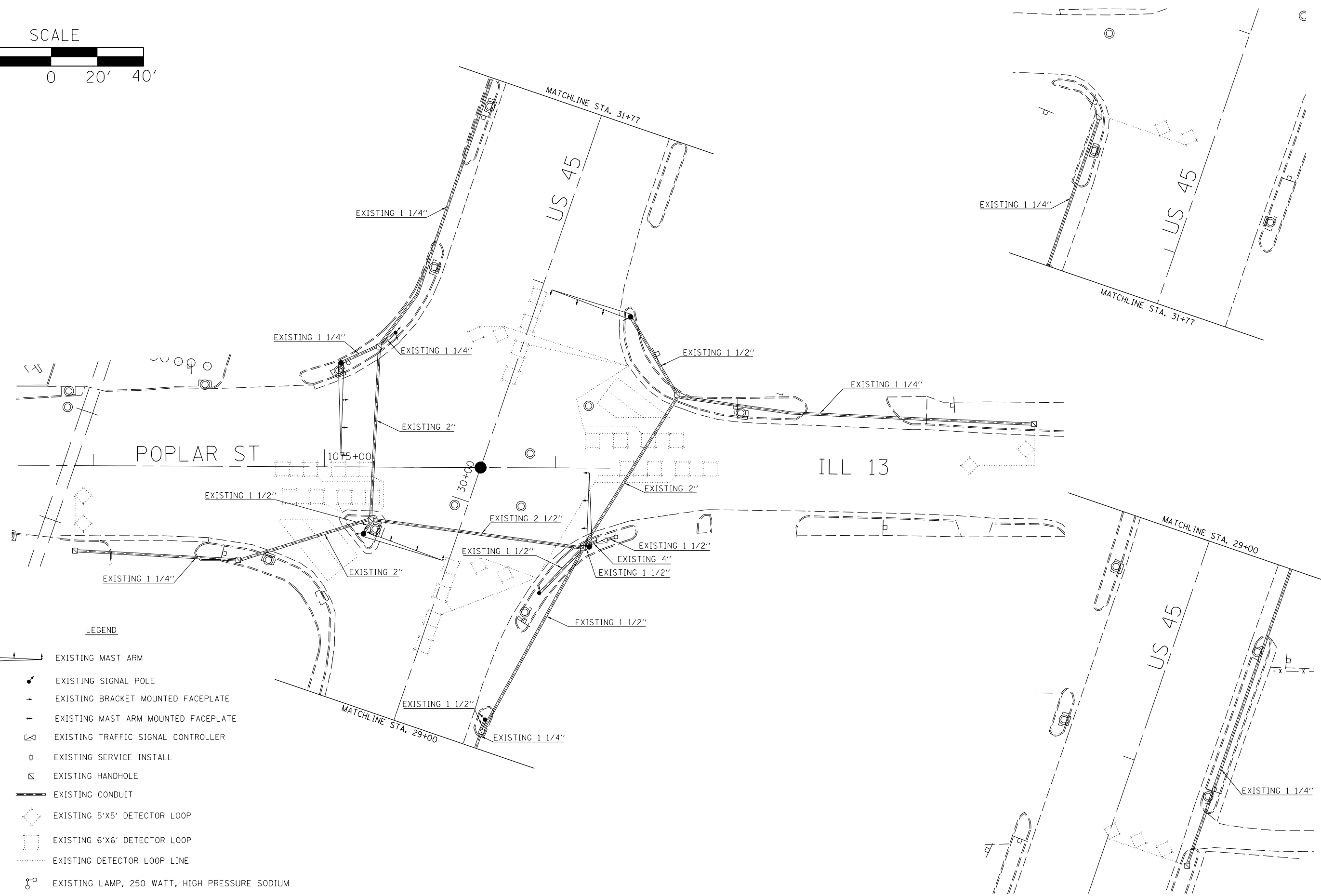
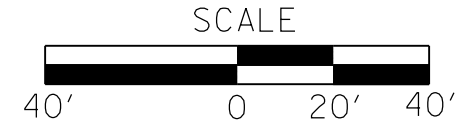
FILE NAME =	USER NAME = \$USER\$	DESIGNED -	REVISED -
c:\pwwork\pwwork\kellykd\0329439\78346-sht-pln.dgn		DRAWN -	REVISED -
		CHECKED -	REVISED -
\$MODELNAME\$	PLOT DATE = 3/13/2013	DATE -	REVISED -

STATE OF ILLINOIS
DEPARTMENT OF TRANSPORTATION

TRAFFIC SIGNAL CABLE DIAGRAM (OLD IL 13 / IL 34)
LOCATION 1

SCALE: SHEET OF SHEETS STA. TO STA.

F.A. RTE.	SECTION	COUNTY	TOTAL SHEETS	SHEET NO.
VAR D9 TRAFFIC SIGNALS 2013-1			11	5
			CONTRACT NO. 78346	
ILLINOIS FED. AID PROJECT				



LEGEND

- EXISTING MAST ARM
- EXISTING SIGNAL POLE
- EXISTING BRACKET MOUNTED FACEPLATE
- EXISTING MAST ARM MOUNTED FACEPLATE
- EXISTING TRAFFIC SIGNAL CONTROLLER
- EXISTING SERVICE INSTALL
- EXISTING HANDHOLE
- EXISTING CONDUIT
- EXISTING 5'X5' DETECTOR LOOP
- EXISTING 6'X6' DETECTOR LOOP
- EXISTING DETECTOR LOOP LINE
- EXISTING LAMP, 250 WATT, HIGH PRESSURE SODIUM

• - SALINE, FRANKLIN

FILE NAME =	USER NAME = \$USER\$	DESIGNED -	REVISED -
et:\pw\work\p\dot\k\elleykd\0329439\78346-sht-plan.dgn		DRAWN -	REVISED -
	PLOT SCALE = 40.0000' / in.	CHECKED -	REVISED -
\$MODELNAME\$	PLOT DATE = 3/13/2013	DATE -	REVISED -

**STATE OF ILLINOIS
DEPARTMENT OF TRANSPORTATION**

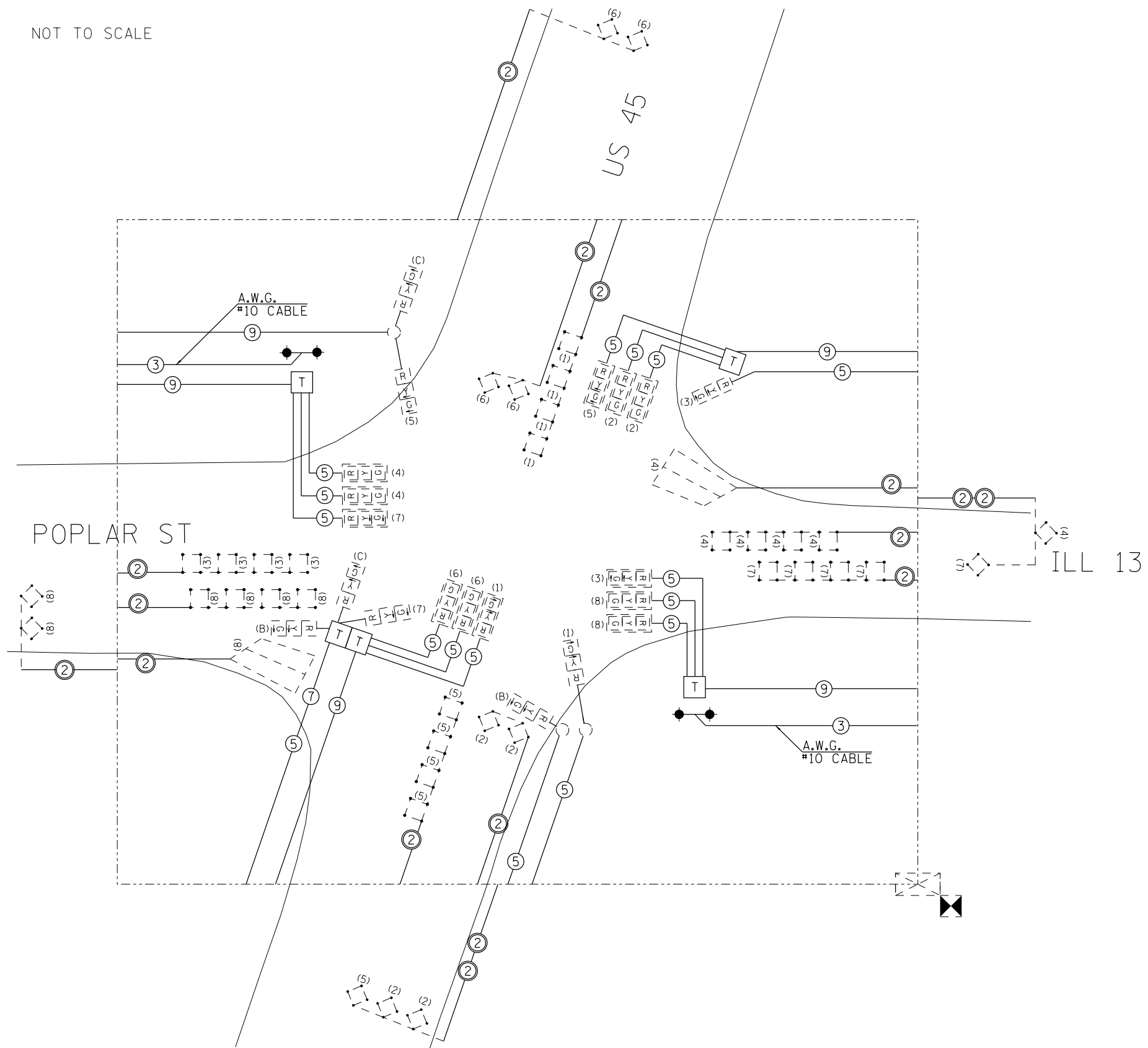
**TRAFFIC SIGNAL PLAN (OLD IL 13 / US 45)
LOCATION 2**

SCALE:	SHEET	OF	SHEETS	STA.	TO	STA.
--------	-------	----	--------	------	----	------

F.A. RTE.	SECTION	COUNTY	TOTAL SHEETS	SHEET NO.
VAR	D9 TRAFFIC SIGNAL 2013-1		11	6
			CONTRACT NO. 78346	
ILLINOIS FED. AID PROJECT				



NOT TO SCALE



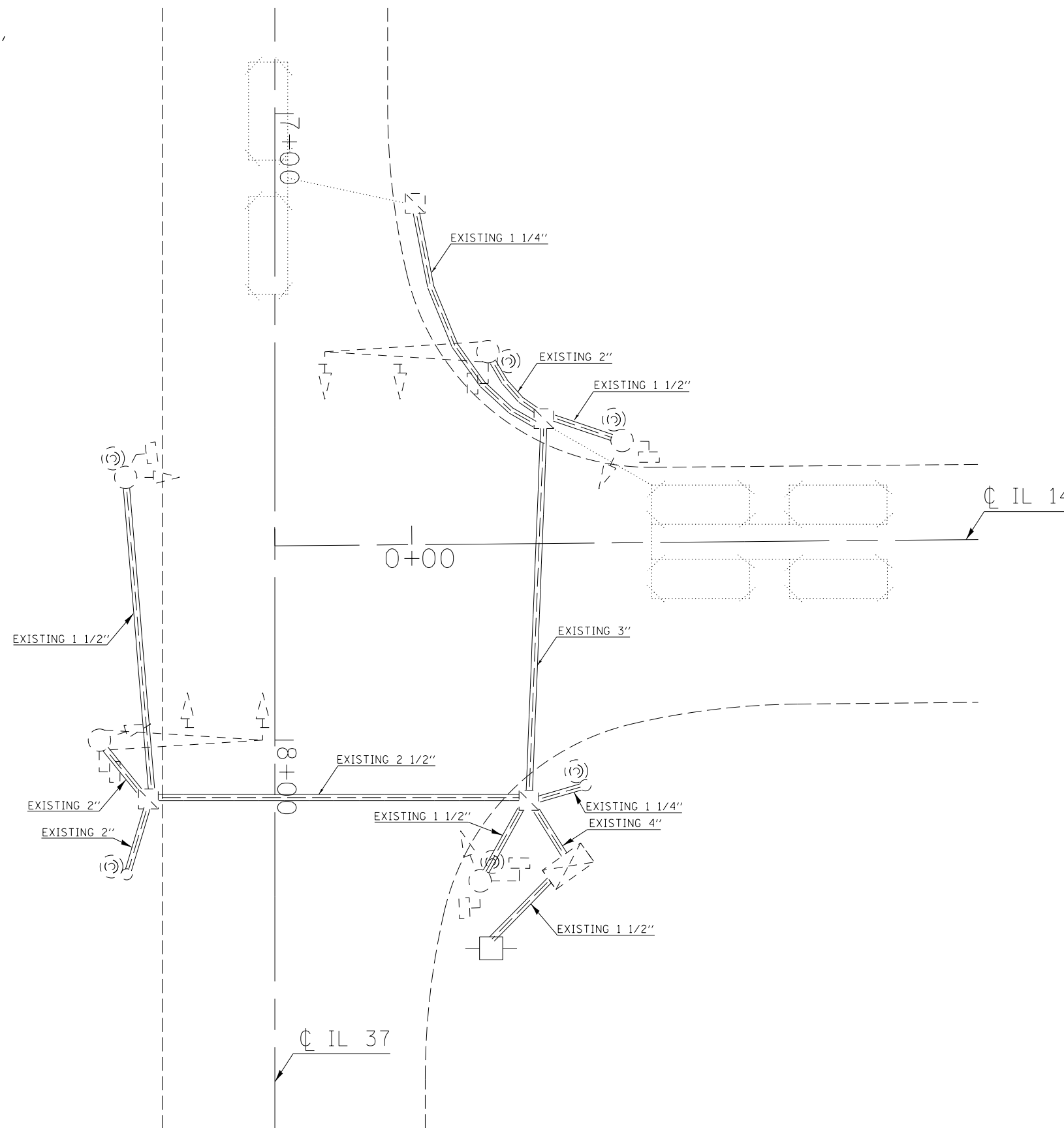
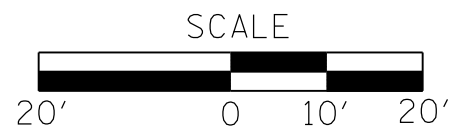
NOTES

- ALL CABLES SHALL BE A.W.G. #14 UNLESS OTHERWISE NOTED.
- ELECTRIC SERVICE IS SUPPLIED BY AMEREN CIPS.
- ELECTRIC CABLE DENOTED AS #10, 3/C BEING INSTALLED TO THE COMBINATION MAST ARM POLES SHALL NOT GO THROUGH THE TERMINAL BLOCK BUT SHOULD BE SPLICED IN POLE. SEE STEEL COMB. MAST ARM ASSEMBLY AND POLE DETAIL.
- PROPOSED 2/C ELECTRIC CABLE SHOWN IN CABLE DIAGRAM ARE PAID FOR IN FEET AS ELECTRIC CABLE IN CONDUIT, LEAD-IN, NO. 14 (1 PAIR).

LEGEND

- T TERMINAL BLOCK IN MAST ARM POLE BASE (SEE SPECIAL PROVISIONS).
- EXISTING LAMP, 250 WATT, HIGH PRESSURE SODIUM
- ⊠ TRAFFIC SIGNAL CONTROLLER CABINET
- ⊠ PHOTOCELL RELAY, 30 AMPERE, 240 VOLT
- ② INDICATES 2/C TWISTED, SHIELDED CABLE IN CONDUIT
- ⑤ NUMBER IN CIRCLE INDICATES NUMBER OF CONDUCTORS IN THAT CABLE
- (4) NUMBER IN PARENTHESIS INDICATES PHASE
- ⊠ 5' X 5' DETECTOR LOOP WITH 2" CORE DRILLED CORNERS. NUMBER INDICATES PHASE, LOWER CASE LETTER INDICATES AMPLIFIER.

• - SALINE, FRANKLIN											
FILE NAME =	USER NAME = \$USER\$	DESIGNED -	REVISED -	STATE OF ILLINOIS DEPARTMENT OF TRANSPORTATION	TRAFFIC SIGNAL CABLE DIAGRAM (OLD IL 13 / US 45) LOCATION 2	F.A. RTE.	SECTION	COUNTY	TOTAL SHEETS	SHEET NO.	
et:\pw\work\p\dot\k\elleykd\0329439\78346-sht-plan.dgn		DRAWN -	REVISED -			VAR	D9 TRAFFIC SIGNAL 2013-1	.	.	11	7
\$MODELNAME\$	PLOT SCALE = 40.0000' / in.	CHECKED -	REVISED -			CONTRACT NO. 78346					
	PLOT DATE = 3/13/2013	DATE -	REVISED -			SCALE:	SHEET	OF	SHEETS	STA.	TO
						ILLINOIS FED. AID PROJECT					



LEGEND

- EXISTING MAST ARM
- EXISTING SIGNAL POLE
- EXISTING BRACKET MOUNTED FACEPLATE
- EXISTING MAST ARM MOUNTED FACEPLATE
- EXISTING TRAFFIC SIGNAL CONTROLLER
- EXISTING HANDHOLE
- EXISTING CONDUIT
- EXISTING 5'X5' DETECTOR LOOP
- EXISTING 6'X6' DETECTOR LOOP
- EXISTING DETECTOR LOOP LINE
- EXISTING PEDESTRIAN PUSH BUTTON
- EXISTING PEDESTRIAN HEAD
- EXISTING SERVICE INSTALL

FILE NAME =	USER NAME = \$USER\$	DESIGNED -	REVISED -
et:\pwork\pwork\kellykd\0329439\78346-sht-plan.dgn		DRAWN -	REVISED -
	PLOT SCALE = 20.0000' / in.	CHECKED -	REVISED -
\$MODELNAME\$	PLOT DATE = 3/13/2013	DATE -	REVISED -

STATE OF ILLINOIS
DEPARTMENT OF TRANSPORTATION

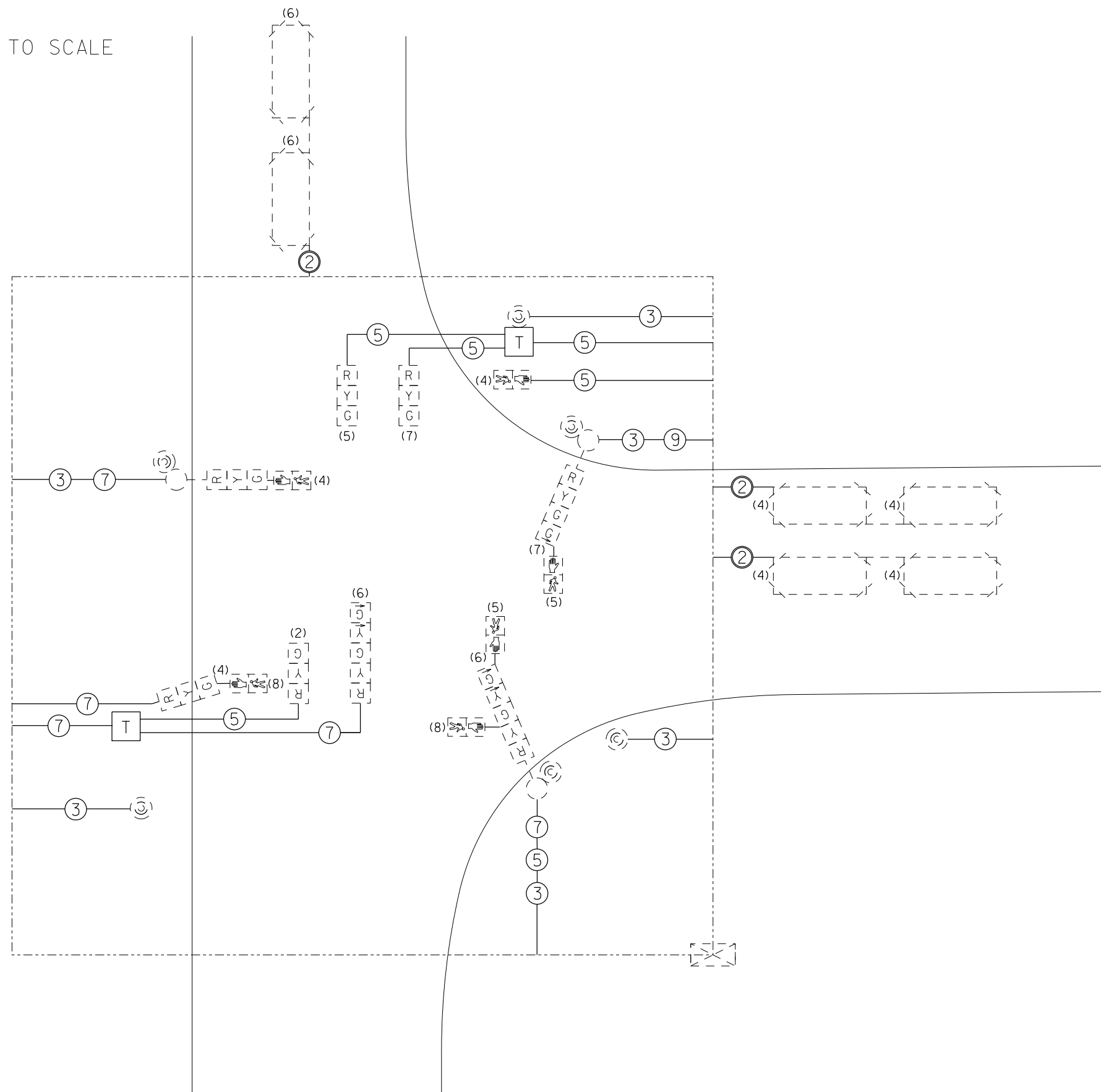
TRAFFIC SIGNAL PLAN (IL 37 / IL 14)
LOCATION 3

SCALE: SHEET OF SHEETS STA. TO STA.

F.A. RTE.	SECTION	COUNTY	TOTAL SHEETS	SHEET NO.
VAR D9 TRAFFIC SIGNALS 2013-1			11	8
			CONTRACT NO. 78346	
ILLINOIS FED. AID PROJECT				



NOT TO SCALE



NOTES







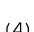
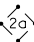
ALL CABLES SHALL BE A.W.G. #14 UNLESS OTHERWISE NOTED.

ELECTRIC SERVICE IS SUPPLIED BY AMEREN CIPS.

ELECTRIC CABLE DENOTED AS #10, 3/C BEING INSTALLED TO THE COMBINATION MAST ARM POLES SHALL NOT GO THROUGH THE TERMINAL BLOCK BUT SHOULD BE SPLICED IN POLE. SEE STEEL COMB. MAST ARM ASSEMBLY AND POLE DETAIL.

PROPOSED 2/C ELECTRIC CABLE SHOWN IN CABLE DIAGRAM ARE PAID FOR IN FEET AS ELECTRIC CABLE IN CONDUIT, LEAD-IN, NO. 14 (1 PAIR).

LEGEND

-  PEDESTRIAN PUSH BUTTON
-  PEDESTRIAN SIGNAL HEAD
-  TERMINAL BLOCK IN MAST ARM POLE BASE (SEE SPECIAL PROVISIONS).
-  TRAFFIC SIGNAL CONTROLLER CABINET
-  INDICATES 2/C TWISTED, SHIELDED CABLE IN CONDUIT
-  NUMBER IN CIRCLE INDICATES NUMBER OF CONDUCTORS IN THAT CABLE
-  NUMBER IN PARENTHESIS INDICATES PHASE
-  5' X 5' DETECTOR LOOP WITH 2" CORE DRILLED CORNERS. NUMBER INDICATES PHASE, LOWER CASE LETTER INDICATES AMPLIFIER.

FILE NAME =	USER NAME = \$USER*	DESIGNED -	REVISED -
ct:\pw\work\p\dot\k\elleykd\0329439\78346-sht-plan.dgn		DRAWN -	REVISED -
	PLOT SCALE = 20.0000' / in.	CHECKED -	REVISED -
\$MODELNAME*	PLOT DATE = 3/13/2013	DATE -	REVISED -

**STATE OF ILLINOIS
DEPARTMENT OF TRANSPORTATION**

**TRAFFIC SIGNAL CABLE DIAGRAM (IL 37 / IL 14)
LOCATION 3**

SCALE: SHEET OF SHEETS STA. TO STA.

F.A. RTE.	SECTION	COUNTY	TOTAL SHEETS	SHEET NO.
VAR D9 TRAFFIC SIGNALS 2013-1		*	11	9
			CONTRACT NO. 78346	
ILLINOIS FED. AID PROJECT				

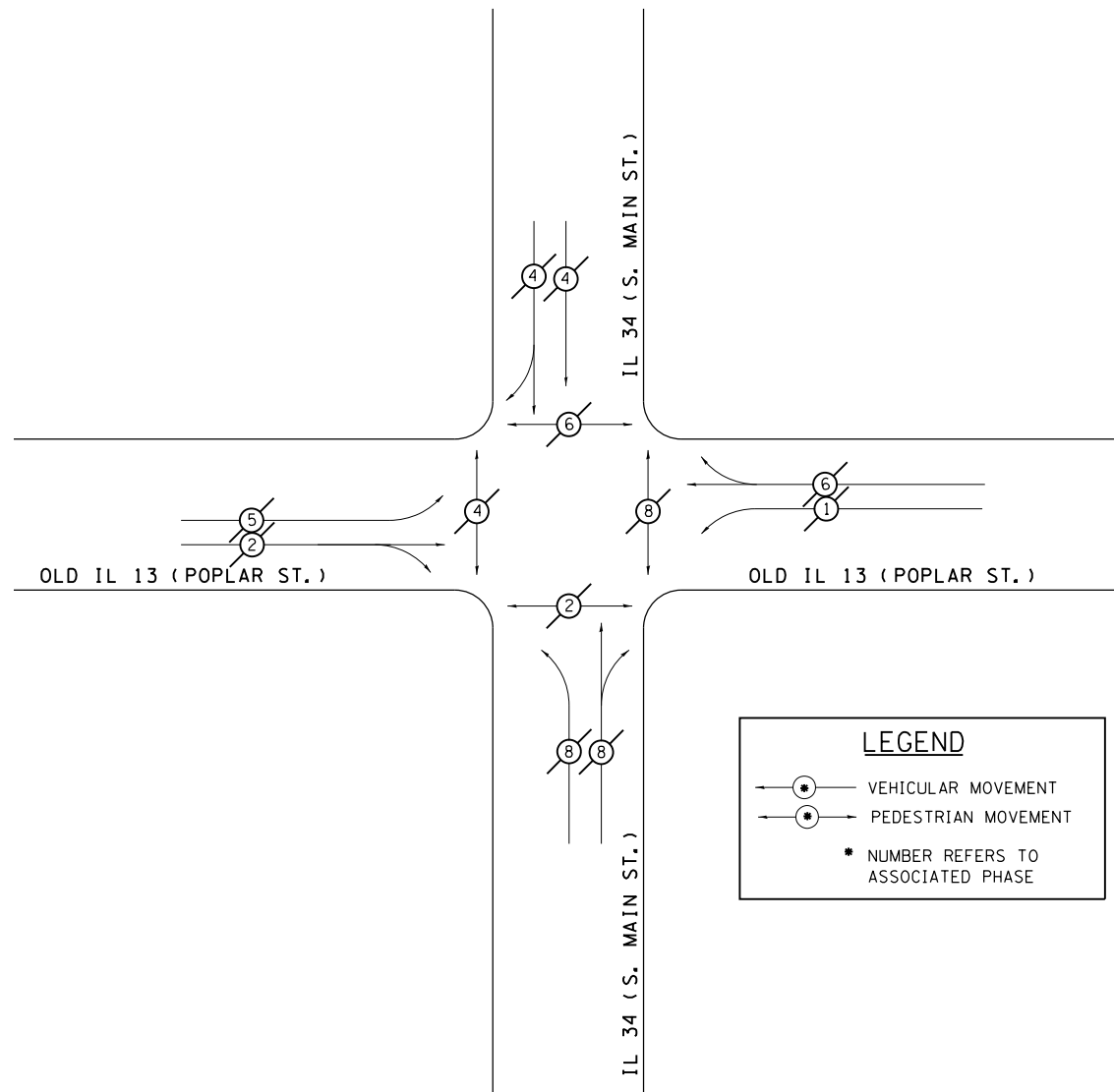
PHASE DESIGNATION DIAGRAM

OLD IL 13 & IL 34

LOCATION 1



REFERRING TO STANDARD 857001, THE VEHICULAR AND PEDESTRIAN PHASES USED ARE DESIGNATED AS SHOWN.



LEGEND

- VEHICULAR MOVEMENT
- PEDESTRIAN MOVEMENT
- NUMBER REFERS TO ASSOCIATED PHASE

REVISIONS

DRAWN	1-31-90
REVISED	5-30-90
REVISED	12-18-01
REVISED	3-27-08

STD. 9-66

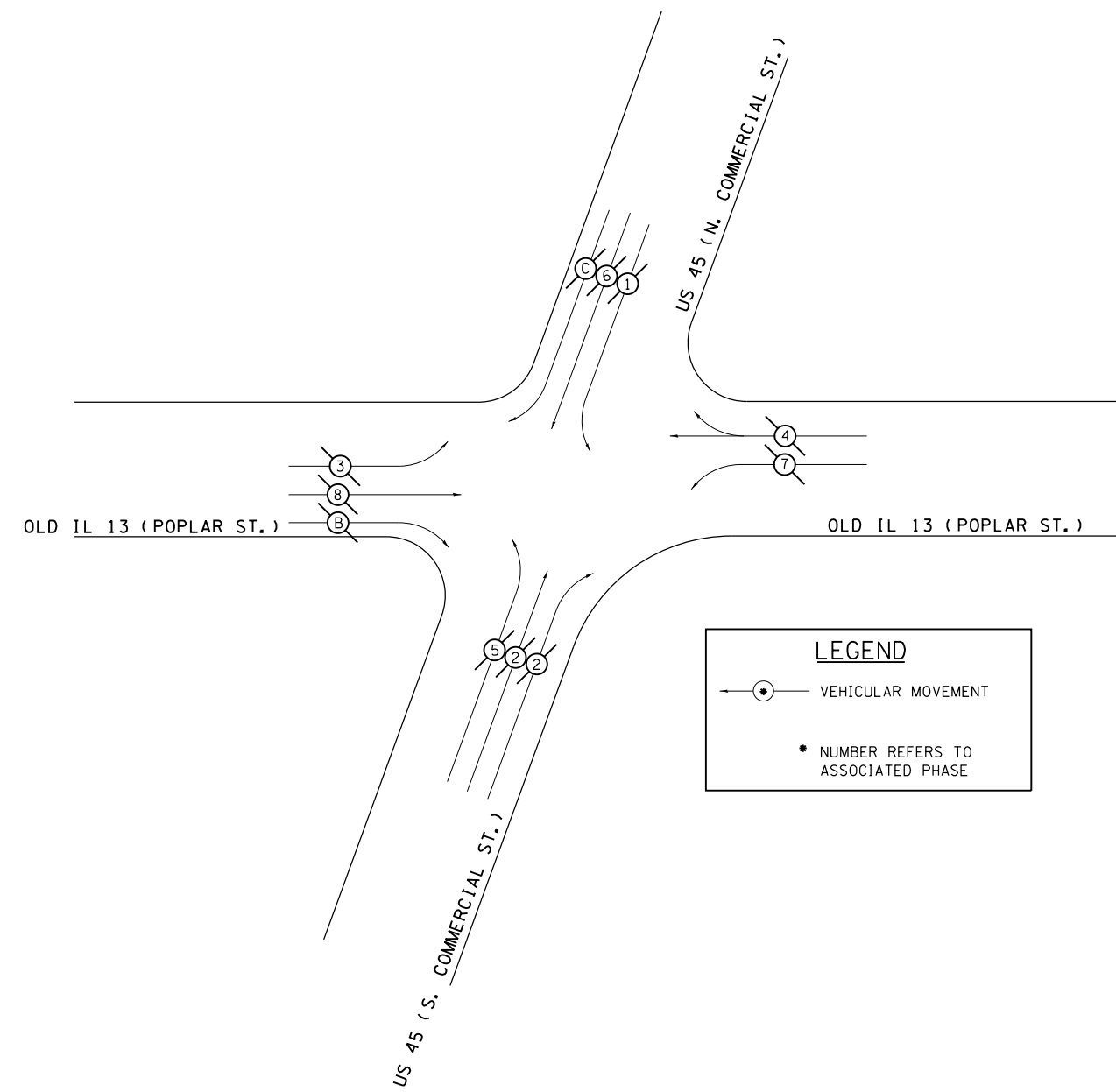
PHASE DESIGNATION DIAGRAM

OLD IL 13 & US 45

LOCATION 2



REFERRING TO STANDARD 857001, THE VEHICULAR AND PEDESTRIAN PHASES USED ARE DESIGNATED AS SHOWN.



LEGEND

- VEHICULAR MOVEMENT
- NUMBER REFERS TO ASSOCIATED PHASE

REVISIONS

DRAWN	1-31-90
REVISED	5-30-90
REVISED	12-18-01
REVISED	3-27-08

STD. 9-66

FILE NAME =	USER NAME = \$USER\$	DESIGNED -	REVISED -
ci:\pw\work\p\dot\k\elleyk\d\0329439\78346-sht-plan.dgn		DRAWN -	REVISED -
\$MODELNAME\$	PLOT SCALE = 100.0000' / in.	CHECKED -	REVISED -
	PLOT DATE = 3/13/2013	DATE -	REVISED -

**STATE OF ILLINOIS
DEPARTMENT OF TRANSPORTATION**

DETAILS: PHASE DESIGNATION DIAGRAMS

SCALE: SHEET OF SHEETS STA. TO STA.

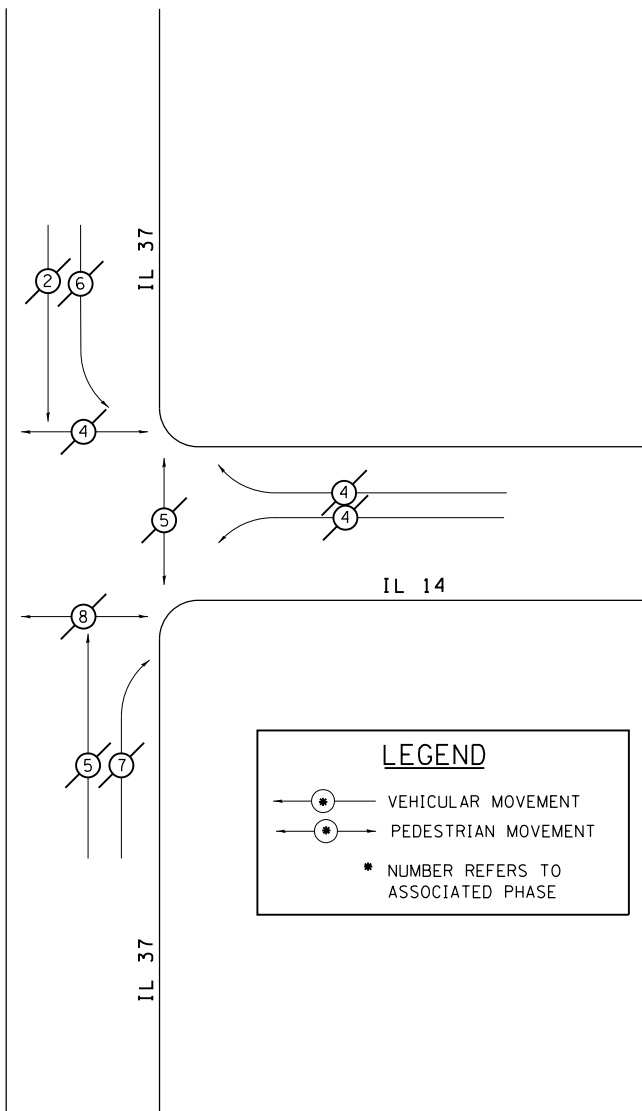
F.A. RTE.	SECTION	COUNTY	TOTAL SHEETS	SHEET NO.
VAR	D9 TRAFFIC SIGNAL 2013-1	*	11	10
			CONTRACT NO. 78346	
ILLINOIS FED. AID PROJECT				

PHASE DESIGNATION DIAGRAM

**IL 37 & IL 14
LOCATION 3**



REFERRING TO STANDARD 857001, THE VEHICULAR AND PEDESTRIAN PHASES USED ARE DESIGNATED AS SHOWN.



LEGEND

- VEHICULAR MOVEMENT
- PEDESTRIAN MOVEMENT
- NUMBER REFERS TO ASSOCIATED PHASE

REVISIONS	
DRAWN	1-31-90
REVISED	5-30-90
REVISED	12-18-01
REVISED	3-27-08

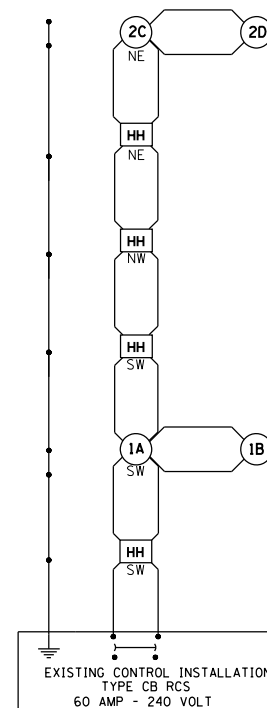
STD. 9-66

WIRING DIAGRAM FOR LIGHTING (OLD IL 13 /IL 34)

LOCATION 1

NOTES:

- FOR SIZE AND TYPE OF CABLE USED FOR LIGHTING INSTALLATION SEE CABLE DIAGRAM SHEET NO. .
- POWER TO CONTROL INSTALLATION SHALL REMAIN AS IS.



LEGEND FOR WIRING DIAGRAM

- HH** INDICATES PROPOSED TRAFFIC SIGNAL HANDHOLE. NOTE: THE SIGNAL CONDUIT SYSTEM SHALL BE UTILIZED TO INSTALL WIRING FOR ALL THE PROPOSED LIGHTING SYSTEM, EXCEPT FOR LIGHT POLES NO. .
- 1** NUMBER INDICATES POSITION OF POLE IN WIRING DIAGRAM.
- INDICATES PROPOSED GROUND AT LIGHT POLE AND CONTROL INSTALLATION.
- ⏏ INDICATES CONTINUOUS GROUND FROM CONTROL INSTALLATION.

REVISIONS	
DRAWN	7-27-93
REVISED	5-14-02
RESIZED	5-8-08

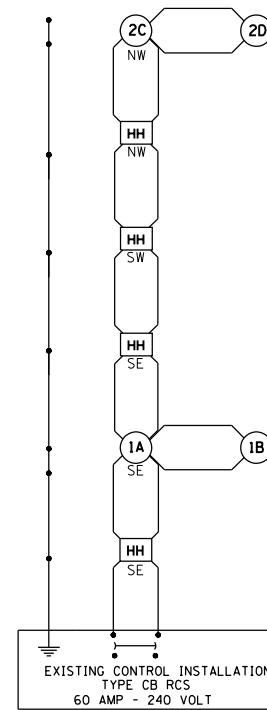
STD. 9-59

WIRING DIAGRAM FOR LIGHTING (OLD IL 13 /US 45)

LOCATION 2

NOTES:

- FOR SIZE AND TYPE OF CABLE USED FOR LIGHTING INSTALLATION SEE CABLE DIAGRAM SHEET NO. .
- POWER TO CONTROL INSTALLATION SHALL REMAIN AS IS.



LEGEND FOR WIRING DIAGRAM

- HH** INDICATES PROPOSED TRAFFIC SIGNAL HANDHOLE. NOTE: THE SIGNAL CONDUIT SYSTEM SHALL BE UTILIZED TO INSTALL WIRING FOR ALL THE PROPOSED LIGHTING SYSTEM, EXCEPT FOR LIGHT POLES NO. .
- 1** NUMBER INDICATES POSITION OF POLE IN WIRING DIAGRAM.
- INDICATES PROPOSED GROUND AT LIGHT POLE AND CONTROL INSTALLATION.
- ⏏ INDICATES CONTINUOUS GROUND FROM CONTROL INSTALLATION.

REVISIONS	
DRAWN	7-27-93
REVISED	5-14-02
RESIZED	5-8-08

STD. 9-59

FILE NAME =	USER NAME = \$USER\$	DESIGNED -	REVISED -
c:\pwork\work\pwork\kellykd\0329439\78346-sht-plan.dgn		DRAWN -	REVISED -
\$MODELNAME\$	PLOT SCALE = 100.0000' / in.	CHECKED -	REVISED -
	PLOT DATE = 3/13/2013	DATE -	REVISED -

**STATE OF ILLINOIS
DEPARTMENT OF TRANSPORTATION**

**DETAILS: PHASE DESIGNATION DIAGRAMS;
WIRING DIAGRAMS FOR LIGHTING**

SCALE: SHEET OF SHEETS STA. TO STA.

F.A. RTE.	SECTION	COUNTY	TOTAL SHEETS	SHEET NO.
VAR	D9 TRAFFIC SIGNAL 2013-1	*	11	11
				CONTRACT NO. 78346
ILLINOIS FED. AID PROJECT				