

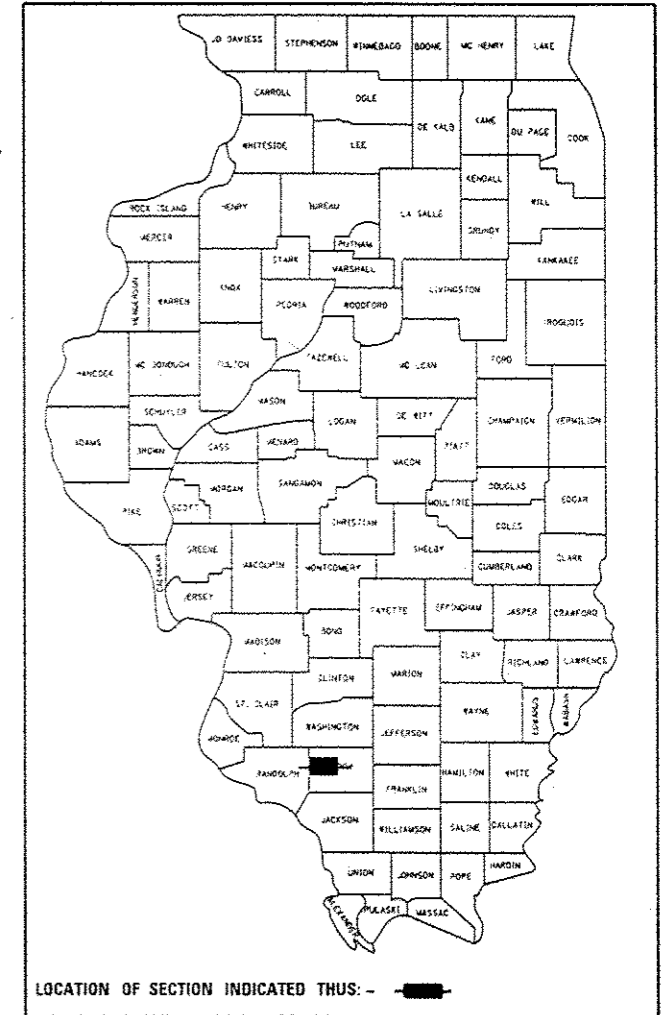
PROPOSED HIGHWAY PLANS

FAP ROUTE 329 (IL 154)
SECTION (19,18,17,103)RS-4
PROJECT F-0329(014)
RESURFACING & PATCHING
PERRY COUNTY

C-99-021-13

F.A.P. RTE.	SECTION	COUNTY	TOTAL SHEETS	SHEET NO.
329	(19,18,17,103)RS-4	PERRY	34	1
ILLINOIS			CONTRACT NO. 78351	

D-99-019-13



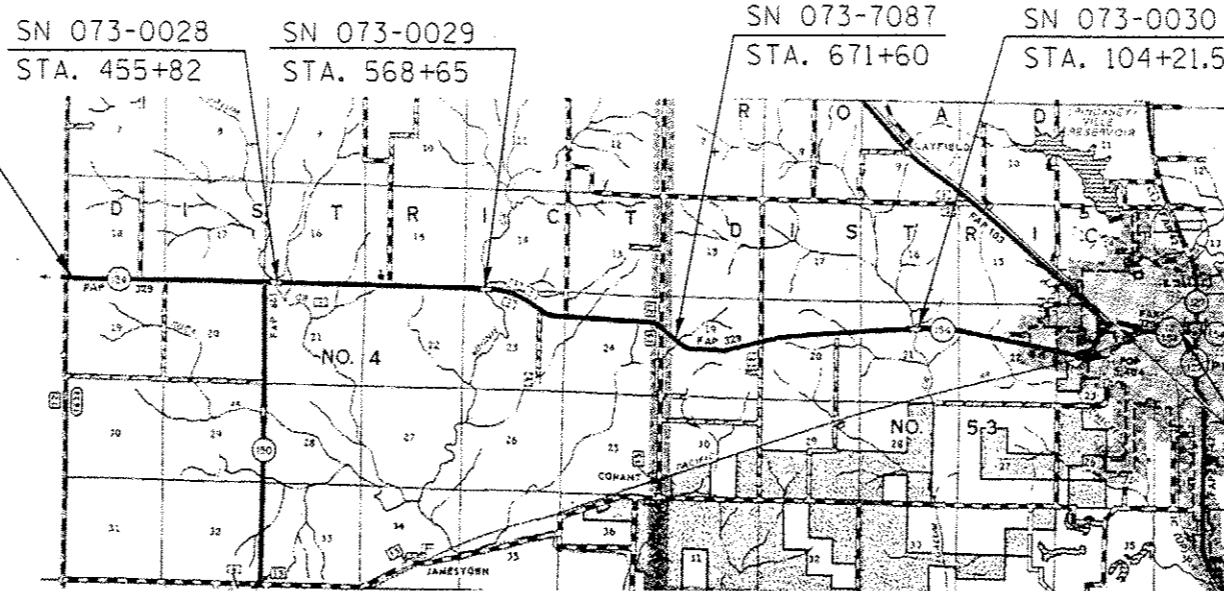
FOR INDEX OF SHEETS, SEE SHEET NO. 3

ADT 2200 (2013)
PV = 1770
MU = 300
SU = 130
TRUCKS = 19.5%

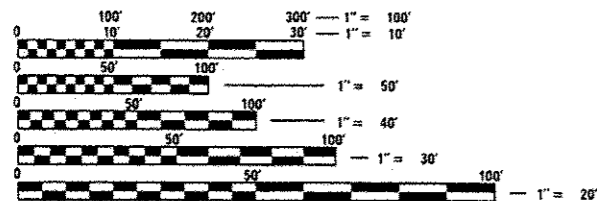
EQUATION STATIONS

EQ. STA. 351+08.2 (BK.) = STA. 349+00 (AH.)
EQ. STA. 609+17.2 (BK.) = STA. 608+76.2 (AH.)
EQ. STA. 747+58.7 (BK.) = STA. 165+21 (AH.)
EQ. STA. 22+04.5 (BK.) = STA. 1343+13.9 (BK.)
STATIONING IS DECREASING FROM THIS POINT
EQ. STA. 1340+76.5 (BK.) = STA. 1340+71.7 (AH.)
EQ. STA. 1317+95.9 (BK.) = STA. 1317+74.2 (AH.)

PROP. PROJECT BEGINS
FAP 329 (IL. 154)
STA. 345+54



TOWNSHIPS:
PERCY & PINCKNEYVILLE



FULL SIZE PLANS HAVE BEEN PREPARED USING STANDARD ENGINEERING SCALES. REDUCED SIZED PLANS WILL NOT CONFORM TO STANDARD SCALES. IN MAKING MEASUREMENTS ON REDUCED PLANS, THE ABOVE SCALES MAY BE USED.

J.U.L.I.E.
JOINT UTILITY LOCATION INFORMATION FOR EXCAVATION
1-800-892-0123
OR 811

PROP. PROJECT ENDS
FAP 329 (IL. 154)
STA. 1268+16

PROJECT ENGINEER: CHARLES STEIN (618)351-5210
PROJECT MANAGER: KATHI MCCORD (618)351-5319

GROSS LENGTH = 61,727.8 FT. = 11.7 MILE
NET LENGTH = 62,207.8 FT. = 11.8 MILE

CONTRACT NO. 78351

STATE OF ILLINOIS
DEPARTMENT OF TRANSPORTATION
DIVISION OF HIGHWAYS

SUBMITTED March 21, 2013
Jeffrey Z. Keim
DEPUTY DIRECTOR OF HIGHWAYS, REGION ENGINEER

April 26, 2013
John D. Baranzoni, P.E.
ENGINEER OF DESIGN AND ENVIRONMENT

April 26, 2013
Omer Osman, P.E.
DIRECTOR OF HIGHWAYS, CHIEF ENGINEER

PRINTED BY THE AUTHORITY
OF THE STATE OF ILLINOIS

Prepared By: Joe Zlaniewicz
DISTRICT STUDIES & PLANS ENGINEER

Examined By: Paul E. [Signature]
DISTRICT LAND ACQUISITION ENGINEER

Examined By: Carrie Nelson
DISTRICT PROGRAM DEVELOPMENT ENGINEER

Examined By: Keel [Signature]
DISTRICT OPERATIONS ENGINEER

Examined By: [Signature]
DISTRICT PROJECT IMPLEMENTATION ENGINEER

Examined By: David J. [Signature]
DISTRICT CONSTRUCTION ENGINEER

Examined By: [Signature]
DISTRICT MATERIALS ENGINEER

Approved By: Jeffrey L. Kean
DEPUTY DIRECTOR OF HIGHWAYS, REGION 5 ENGINEER

March 21 2013
DATE

FILE NAME =	USER NAME = mcooordr	DESIGNED -	REVISED -	STATE OF ILLINOIS DEPARTMENT OF TRANSPORTATION	SIGNATURE SHEET				F.A.P. RTE.	SECTION	COUNTY	TOTAL SHEETS	SHEET NO.
c:\pwwork\pwwork\mcooordr\10332891\78301-shr-plan.dgn		DRAWN -	REVISED -		329	(19,18,17,103)RS-4	PERRY						
PLOT SCALE = 200.0000' / in.		CHECKED -	REVISED -		SCALE: _____ SHEET _____ OF _____ SHEETS STA. _____ TO STA. _____				CONTRACT NO. 78351				
PLOT DATE = 3/19/2013		DATE -	REVISED -		ILLINOIS FED. AID PROJECT								

INDEX OF SHEETS

SHEET NO.	DESCRIPTION
1	Cover Sheet
2	Signature Sheet
3	Index of Sheets, Standards & Mixture Requirements
4	General Notes; Existing Pavement Core Info.
5 - 6	Summary Of Quantities
7 - 9	Typical Sections for FAP 329 (IL 154)
10 - 11	Resurfacing Schedules - Mainline, Side Roads and Entrances
12	Guardrail Schedule
13 - 15	Pavement Marking Schedules
16 - 26	Plan Sheets
27	Details - Butt Joints and Transitions
28	Details - Butt Joint and Mailbox Turnout
29	Details - Side Road and Entrances
30 - 32	Details - Proposed Guardrail
33	Temporary Hot-Mix Asphalt Transitions
34	Signs - Uneven Lanes; Rough Grooved Surface

STANDARDS	
442201-03	701301-04
630001-10	701306-03
630101-09	701311-03
630301-06	701316-07
630106-01	701336-06
635006-03	701501-06
635011-02	701901-02
701006-04	780001-03
701011-03	781001-03

MIXTURE REQUIREMENTS

Location(s):	Hot-Mix Asphalt Surface Course
Mixture Use(s):	Hot-Mix Asphalt Surface Course, Mix. C, N90
AD/PG:	PG64-22
ABR%(Max):	SEE SPECIAL PROVISIONS
Design Air Voids:	4.0%, 90 Gyration Design
Mixture Composition (Gradation):	IL-9.5mm
Friction Aggregate:	C Surface

Location(s):	Hot-Mix Asphalt Leveling Binder
Mixture Use(s):	Hot-Mix Asphalt Leveling Binder Course, N90, IL-9.5mm Fine-Graded
AD/PG:	PG64-22
ABR%(Max):	SEE SPECIAL PROVISIONS
Design Air Voids:	4.0%, 90 Gyration Design
Mixture Composition (Gradation):	IL-9.5mm Fine Graded
Friction Aggregate:	None

Location(s):	Class D Patching
Mixture Use(s):	Hot-Mix Asphalt Binder Course, N90, IL-19.0
AD/PG:	PG64-22
ABR%(Max):	SEE SPECIAL PROVISIONS
Design Air Voids:	4.0%, 90 Gyration Design
Mixture Composition (Gradation):	IL-9.0mm
Friction Aggregate:	None

MTD INFORMATION

An emptied MTD will be allowed over the following structures per memo from Springfield dated February 11, 2013.

SN 073-0038	SN 073-7050
SN 073-0029	SN 073-7051
SN 073-0030	SN 073-7055
SN 073-7047	SN 073-7087
SN 073-7048	

FILE NAME *	USER NAME * #USER*	DESIGNED -	REVISED -	STATE OF ILLINOIS DEPARTMENT OF TRANSPORTATION	INDEX OF SHEETS; HIGHWAY STANDARDS; MIXTURE REQUIREMENTS; MTD INFORMATION		F.A.P. RTE.	SECTION	COUNTY	TOTAL SHEETS	SHEET NO.
c:\pw\work\pavdot\mccardk\d0332891178311-shk-plan.dgn		DRAWN -	REVISED -		329	119,18,17,103IRS-4	PERRY	34	3		
#MODELNAME*		CHECKED -	REVISED -		SCALE: SHEET OF SHEETS STA. TO STA.		CONTRACT NO. 78351		ILLINOIS FED. AID PROJECT		
		DATE -	REVISED -								

GENERAL NOTES

THE THICKNESS OF HOT MIX ASPHALT MIXTURE SHOWN ON THE PLANS IS THE NOMINAL THICKNESS. DEVIATIONS FROM THE NOMINAL THICKNESS WILL BE PERMITTED WHEN SUCH DEVIATIONS OCCUR DUE TO IRREGULARITIES IN THE EXISTING SURFACE OR BASE ON WHICH THE HOT MIX ASPHALT MIXTURE IS PLACED.

FACTORS USED FOR ESTIMATING PLAN QUANTITIES ARE AS FOLLOWS AND SHALL NOT BE USED FOR THE BASIS OF FINAL QUANTITIES:

ALL HOT MIX ASPHALT	2.016 TONS/CU.YD.
ALL AGGREGATE	2.05 TONS/CU.YD.
BITUMINOUS MATERIALS:	
ON PAVEMENT	0.09 GAL./SQ.YD.
ON AGGREGATE SURFACE	0.32 GAL./SQ.YD.
AGGREGATE (PRIME COAT)	0.0015 TONS/SO.YD.

AT ALL LOCATIONS WHERE THE PROPOSED HOT MIX ASPHALT OR CONCRETE PAVEMENT JOINS AN EXISTING HOT MIX ASPHALT OR CONCRETE PAVEMENT, A FULL DEPTH SAWED JOINT SHALL BE CONSTRUCTED. THE COST OF THIS JOINT WILL BE INCLUDED IN THE COST OF THE TYPE OF PAVEMENT BEING CONSTRUCTED.

THE CONTRACTOR SHALL STAMP STATIONING IN THE PROPOSED HOT MIX ASPHALT SURFACE AT 100 m (300 FT.) INTERVALS ON ALTERNATING SIDES OF THE PAVEMENT AND AS DIRECTED BY THE ENGINEER. THE STATION SYMBOL STAMPS USED SHALL BE FURNISHED BY THE CONTRACTOR. THEY SHALL BE 140 mm (5 IN.) TALL, OF A DESIGN APPROVED BY THE ENGINEER, AND SHALL REMAIN THE PROPERTY OF THE CONTRACTOR.

THE QUANTITIES SHOWN IN THE PLANS FOR PATCHING ARE ESTIMATES. THE ACTUAL AMOUNT OF PATCHING REQUIRED SHALL BE DETERMINED BY THE ENGINEER IN THE FIELD. PATCHING SURVEY WAS DONE MARCH 6, 2013.

THE QUANTITY OF SHORT-TERM PAVEMENT MARKING SHOWN IN THE PLANS IS BASED ON ONE APPLICATION EACH FOR THE HMA SURFACE REMOVAL, SURFACE COURSE, AND BINDER COURSE.

BITUMINOUS RESURFACING SHALL BE PLACED IN A SEQUENCE THAT WILL MINIMIZE THE TIME THE CENTERLINE EDGE IS EXPOSED TO TRAFFIC. WHEN AT THE END OF A DAY'S OPERATION THE EXPOSED CENTERLINE EDGE IS GREATER THAN 600 METERS (2,000 FT.), THE CONTRACTOR SHALL BE REQUIRED TO PAVE IN THE ADJACENT LANE ON THE FOLLOWING WORK DAY.

THE QUANTITY FOR PRIME COAT WAS CALCULATED IN TWO LAYERS, ONE APPLICATION AFTER MILLING THE EXISTING SURFACE AND ONE APPLICATION AFTER PLACING THE BINDER COURSE AND SHALL BE USED AS DIRECTED BY THE ENGINEER.

COMMITMENTS:

KNIGHT HAWK COAL COMPANY HAS CONFIRMED ABANDONING THEIR FIELD ENTRANCE ON IL. 154 AT RT. STA. 530+55. NEW GUARDRAIL WILL BE INSTALLED THROUGH THIS LOCATION.

NO LANE CLOSURES SHALL BE ALLOWED DURING THE THRESHERMAN FESTIVAL IN PINCKNEYVILLE, AUGUST 15 - 18, 2013.

EXISTING PAVEMENT CORES

CORE NO.	DESCRIPTION	THICKNESS
1	EB LANE - 150' E. OF MILL ST.	3" ASPHALT/ 7" CONC.
2	WB LANE - IN FRONT OF CASEY'S	6" ASPHALT/ 6.5" CONC.
3	EB LANE - AT FAIRGROUND RD.	6" ASPHALT/ 8.5" CONC.
4	WB LANE - 200' W. OF ARMADILLO RD.	6" ASPHALT/ 7" CONC.
5	EB LANE - 0.5 MI. W. OF CONANT RD.	6" ASPHALT/ 6.5" CONC.
6	WB LANE - 0.2 MI. E. OF COUNTY LINE RD.	6" ASPHALT/ 7" CONC.

FILE NAME *	USER NAME * #USER*	DESIGNED -	REVISED -	STATE OF ILLINOIS DEPARTMENT OF TRANSPORTATION	GENERAL NOTES; EXISTING PAVEMENT CORE INFO.	F.A.P. RTE.	SECTION	COUNTY	TOTAL SHEETS	SHEET NO.	
cd:\pwwork\perrydot\mccord\1003320\117835-shr-plan.dgn		DRAWN -	REVISED -			329	(19,16,17,10)RS-4	PERRY	34	4	
#MODELNAME*		CHECKED -	REVISED -			SCALE: SHEET OF SHEETS STA. TO STA.		CONTRACT NO. 78351			
		DATE -	REVISED -			ILLINOIS FED. AID PROJECT					

SUMMARY OF QUANTITIES

FAP 329(IL 154)	
80%FED/20% STATE	
RURAL	URBAN
RESURFACING	
PERRY COUNTY	
CONSTRUCTION TYPE CODE 0005	CONSTRUCTION TYPE CODE 0005

CODE NUMBER	ITEM DESCRIPTION	UNIT	TOTAL QUANTITY	QUANTITY	QUANTITY
* X7801000	WET REFLECTIVE THERMOPLASTIC PAVEMENT MARKING-LETTERS & SYMBOLS	SO FT	122.4	0	122.4
* X7801004	WET REFLECTIVE THERMOPLASTIC PAVEMENT MARKING - LINE 4"	FOOT	168,369	146,367	22,002
* X7801006	WET REFLECTIVE THERMOPLASTIC PAVEMENT MARKING - LINE 6"	FOOT	71	0	71
* X7801024	WET REFLECTIVE THERMOPLASTIC PAVEMENT MARKING - LINE 24"	FOOT	153	29	124
Z0012754	STRUCTURAL REPAIR OF CONCRETE (DEPTH EQUAL TO OR LESS THAN 5 INCHES)	SO FT	20.3	20.3	0.0
Z0012755	STRUCTURAL REPAIR OF CONCRETE (DEPTH GREATER THAN 5 INCHES)	SO FT	11.3	11.3	0.0
Z0034105	MATERIAL TRANSFER DEVICE	TON	15,180	13,310	1,870
Z0048665	RAILROAD PROTECTIVE LIABILITY INSURANCE	L SUM	1	0	1
Z0100209	STONE RIPRAP, CLASS A5	TON	65	65	0
40600100	BITUMINOUS MATERIALS (PRIME COAT)	GALLON	32,514	28,450	4,064
40600300	AGGREGATE (PRIME COAT)	TON	538	471	67
40600645	LEVELING BINDER (MACHINE METHOD), N90	TON	7,588	6,648	940
40600982	HOT-MIX ASPHALT SURFACE REMOVAL - BUTT JOINT	SQ YD	735	514	221
40600990	TEMPORARY RAMP	SQ YD	45	15	30
40603320	HOT-MIX ASPHALT SURFACE COURSE, MIXTURE C, N90	TON	15,180	13,310	1,870
40800050	INCIDENTAL HOT-MIX ASPHALT SURFACING	TON	799	566	233
44000152	HOT-MIX ASPHALT SURFACE REMOVAL - 3/4"	SQ YD	165,886	152,783	13,103
44000158	HOT-MIX ASPHALT SURFACE REMOVAL - 2 1/4"	SQ YD	12,624	3,574	9,050
44201835	CLASS D PATCHES, TYPE I, 16 INCH	SQ YD	69	58	11
44201839	CLASS D PATCHES, TYPE II, 16 INCH	SQ YD	3,814	3,349	465
44201843	CLASS D PATCHES, TYPE III, 16 INCH	SQ YD	437	437	0
44201845	CLASS D PATCHES, TYPE IV, 16 INCH	SQ YD	614	614	0
48100500	AGGREGATE SHOULDERS, TYPE A 6 INCH	SQ YD	858	858	0
48102100	AGGREGATE WEDGE SHOULDERS, TYPE B	TON	1,093	1,006	87
58100200	WATERPROOF MEMBRANE SYSTEM	SQ YD	929	929	0

*SPECIALTY ITEM

FILE NAME :	USER NAME : *USER*	DESIGNED -	REVISED -	STATE OF ILLINOIS DEPARTMENT OF TRANSPORTATION	SUMMARY OF QUANTITIES			F.A.P. RTE.	SECTION	COUNTY	TOTAL SHEETS	SHEET NO.	
ct:\pwwork\pwwork\mccordr\100332891\78351-sh\plan.dgn		DRAWN -	REVISED -					329	(19,18,17,103)RS-4	PERRY	34	5	
#MODELNAME#	PLOT SCALE : 200.0000 1/ in.	CHECKED -	REVISED -		SCALE:	SHEET	OF	SHEETS	STA.	TO	STA.	ILLINOIS FED. AID PROJECT	
	PLOT DATE : 3/22/2013	DATE -	REVISED -									CONTRACT NO. 78351	

REF 70 500

SUMMARY OF QUANTITIES CONTINUED

FAP 329(IL 154)	
80% FED/20% STATE	
RURAL	URBAN
RESURFACING	
PERRY COUNTY	
CONSTRUCTION TYPE CODE 0005	CONSTRUCTION TYPE CODE 0005

CODE NUMBER	ITEM DESCRIPTION	UNIT	TOTAL QUANTITY	QUANTITY	QUANTITY
* 63000001	STEEL PLATE BEAM GUARDRAIL, TYPE A 6' POSTS	FOOT	312.5	212.5	100
* 63000025	STEEL PLATE BEAM GUARDRAIL, ATTACHED TO STRUCTURE	FOOT	212.5	212.5	0
* 63000370	LONG-SPAN GUARDRAIL OVER CULVERT, 25 FT. SPAN	FOOT	175	175	0
* 63100167	TRAFFIC BARRIER TERMINAL, TYPE 1 SPECIAL (TANG)	EACH	20	18	2
63200310	GUARDRAIL REMOVAL	FOOT	826	749	77
67000400	ENGINEER'S FIELD OFFICE, TYPE A	CAL MO	5	4	1
67100100	MOBILIZATION	L SUM	1	0.5	0.5
70100100	TRAFFIC CONTROL AND PROTECTION, STANDARD 701316	EACH	3	3	0
70100460	TRAFFIC CONTROL AND PROTECTION, STANDARD 701306	L SUM	1	1	0
70100600	TRAFFIC CONTROL AND PROTECTION, STANDARD 701336	L SUM	1	0.5	0.5
70102620	TRAFFIC CONTROL AND PROTECTION, STANDARD 701501	L SUM	1	0.0	1.0
70106800	CHANGEABLE MESSAGE SIGN	CAL MO	5	4	1
70106500	TEMPORARY BRIDGE TRAFFIC SIGNALS	EACH	3	3	0
* 70300100	SHORT- TERM PAVEMENT MARKING	FOOT	18,549	16,434	2,115
70301000	WORK ZONE PAVEMENT MARKING REMOVAL	SO FT	6,122	5,424	698
* 78100100	RAISED REFLECTIVE PAVEMENT MARKER	EACH	776	685	91
* 78200410	GUARDRAIL MARKERS, TYPE A	EACH	40	36	4
* 78201000	TERMINAL MARKERS, DIRECT APPLIED	EACH	20	18	2
78300200	RAISED REFLECTIVE PAVEMENT MARKER REMOVAL	EACH	776	685	91
+ 20076600	TRAINEES	HOOR	500	500	
+ 20076604	TRAINEES, TRAINING PROGRAM GRADUATE	HOOR	500	500	

*SPECIALTY ITEM +0042

FILE NAME *	USER NAME * USER*	DESIGNED -	REVISED -
en:\pv-work\p\dot\mccard\rd032891\7031\sh-plant.dgn		DRAWN -	REVISED -
	PLOT SCALE = 200.0000 ' / in.	CHECKED -	REVISED -
#MODELNAME#	PLOT DATE = 3/22/2013	DATE -	REVISED -

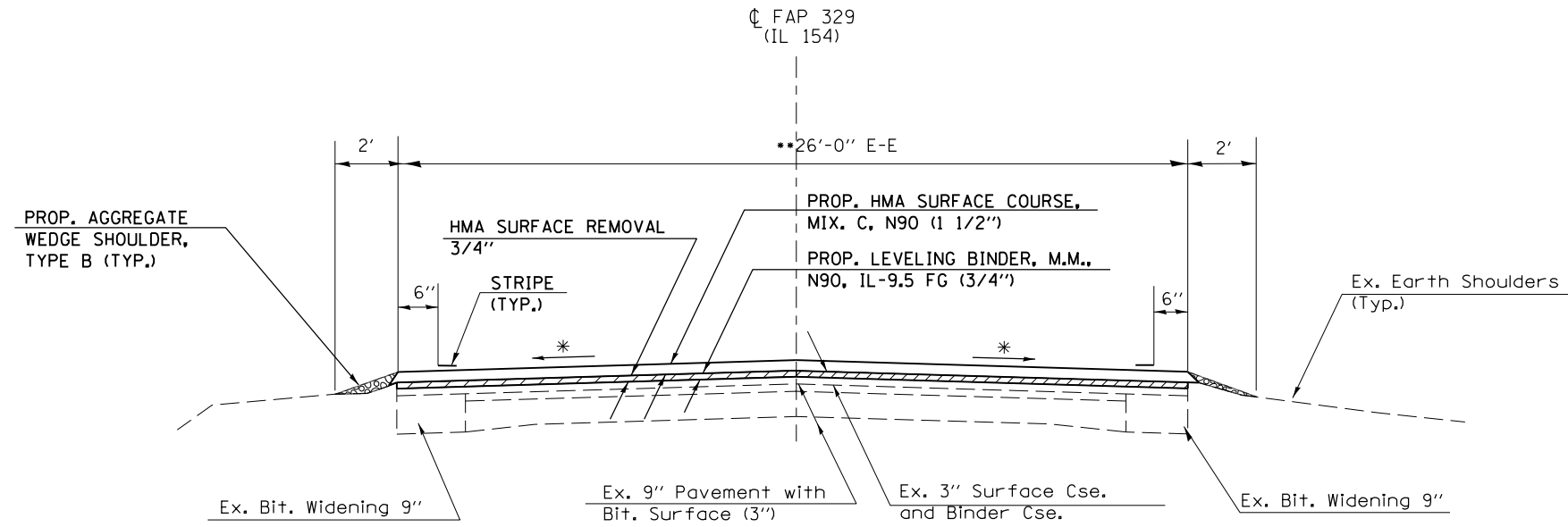
STATE OF ILLINOIS
DEPARTMENT OF TRANSPORTATION

SUMMARY OF QUANTITIES
CONTINUED

SCALE: SHEET OF SHEETS STA. TO STA.

F.A.P. RTE.	SECTION	COUNTY	TOTAL SHEETS	SHEET NO.
329	119,18,17,103IRS-4	PERRY	34	6
CONTRACT NO. 78351			ILLINOIS FED. AID PROJECT	

TYPICAL SECTION #1



* MATCH EX. SLOPE

TO BE USED:

- STA. 345+54 TO STA. 351+08.2
- EQ. STA. 351+08.2 (BK.) = STA. 349+00 (AH.)
- STA. 349+00 TO STA. 455+03
- STA. 456+52 TO STA. 465+00
- STA. 470+00 TO STA. 568+03
- STA. 569+28 TO STA. 608+76.2
- EQ. STA. 608+76.2 (BK.) = STA. 609+17.2 (AH.)
- STA. 609+17.2 TO STA. 671+35
- STA. 671+85 TO STA. 693+34
- STA. 701+74 TO STA. 747+58.7
- EQ. STA. 747+58.7 (BK.) = STA. 165+21 (AH.)
- STA. 165+21 TO STA. 104+80
- STA. 103+63 TO STA. 22+04.5
- EQ. STA. 1343+13.9 (BK.) = STA. 22+04.5 (BK.)
- STA. 1343+13.9 TO STA. 1340+71.7
- EQ. STA. 1340+76.5 (BK.) = STA. 1340+71.7 (AH.)
- STA. 1340+76.5 TO 1317+74.2
- EQ. STA. 1317+95.9 (BK.) = STA. 1317+74.2 (AH.)
- STA. 1317+95.9 TO STA. 1311+18
- STA. 1307+48 TO STA. 1293+64 (BUTT JT.)
- (OMIT RAILROAD CROSSING)
- STA. 1292+54 (BUTT JT.) TO STA. 1286+47

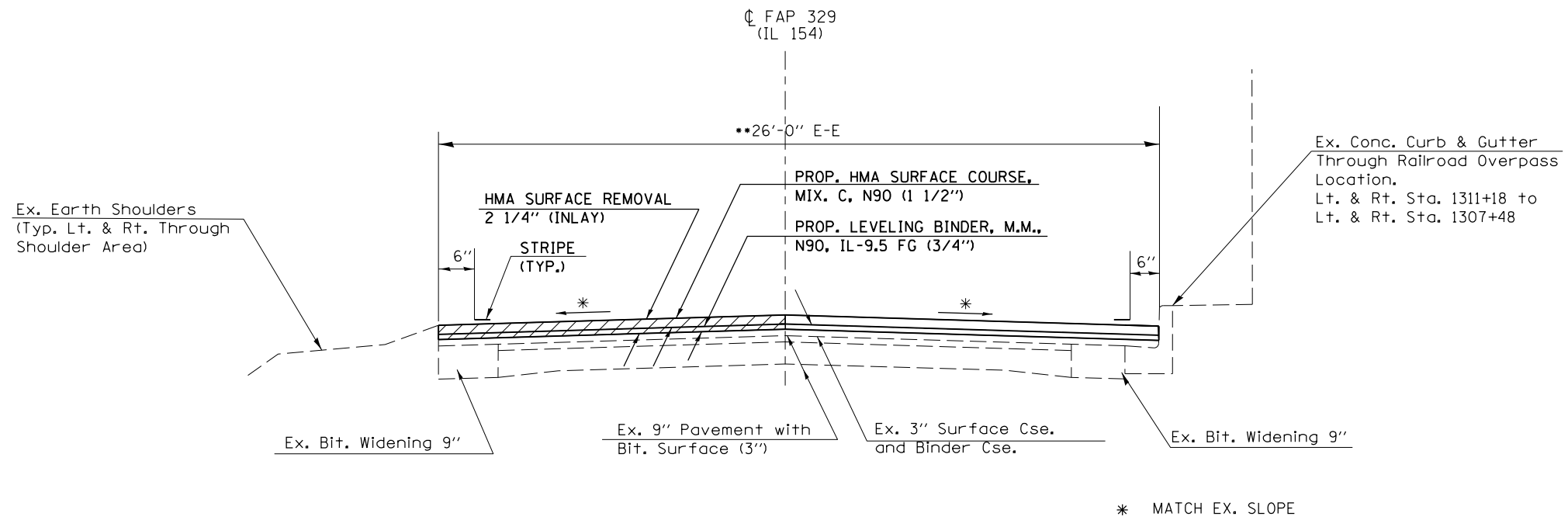
•• EX. PAVEMENT WIDTH VARIES 26' TO 27' THROUGH THIS AREA.

EQUATION STATIONS

- EQ. STA. 351+08.2 (BK.) = STA. 349+00 (AH.)
- EQ. STA. 609+17.2 (BK.) = STA. 608+76.2 (AH.)
- EQ. STA. 747+58.7 (BK.) = STA. 165+21 (AH.)
- EQ. STA. 22+04.5 (BK.) = STA. 1343+13.9 (BK.)
- STATIONING IS DECREASING FROM THIS POINT
- EQ. STA. 1340+76.5 (BK.) = STA. 1340+71.7 (AH.)
- EQ. STA. 1317+95.9 (BK.) = STA. 1317+74.2 (AH.)

FILE NAME =	USER NAME = \$USER\$	DESIGNED -	REVISED -	STATE OF ILLINOIS DEPARTMENT OF TRANSPORTATION	TYPICAL SECTION #1			F.A.P. RTE.	SECTION	COUNTY	TOTAL SHEETS	SHEET NO.
et:\pw\work\p\dot\mccordkr\ad033289\178351-sht-plen.dgn		DRAWN -	REVISED -					329	(19,18,17,103)RS-4	PERRY	34	7
\$MODELNAME\$	PLOT SCALE = 200.0000' / in.	CHECKED -	REVISED -		SCALE: SHEET OF SHEETS STA. TO STA.			CONTRACT NO. 78351				
	PLOT DATE = 3/22/2013	DATE -	REVISED -		ILLINOIS FED. AID PROJECT							

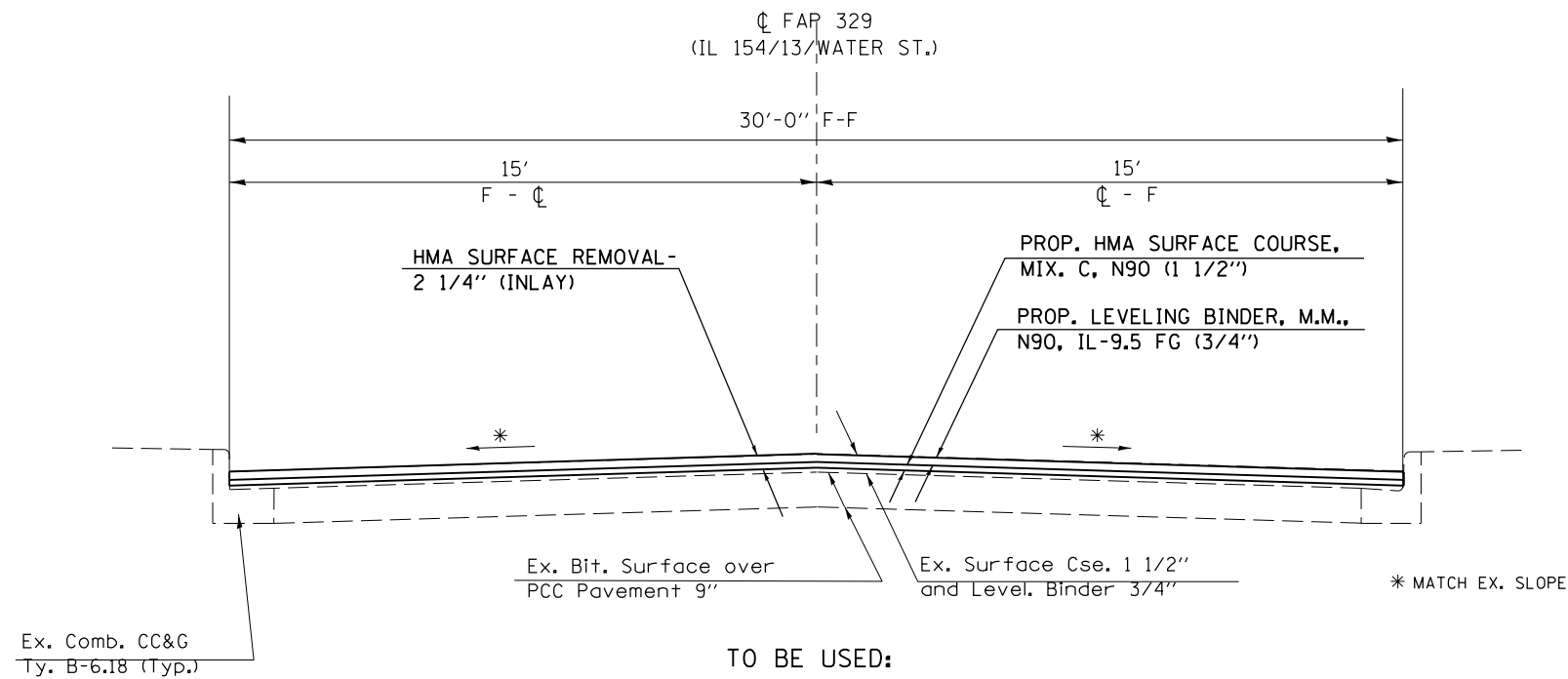
TYPICAL SECTION #2



TO BE USED:

STA. 1317+95.9 TO STA. 1311+18
 STA. 1311+18 TO STA. 1307+48 (••24' EX. PAV'T.)
 (FROM WYE TO WEST OF RR OVERPASS)

TYPICAL SECTION #3

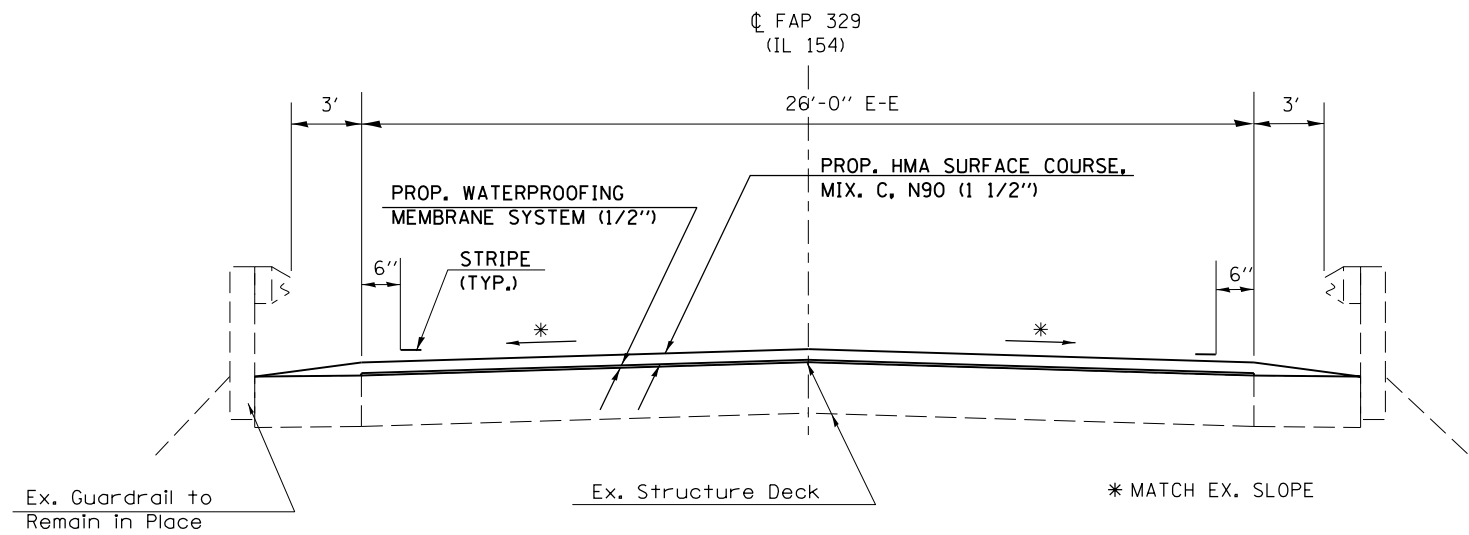


TO BE USED:

STA. 1286+47 (GRANT ST.) TO STA. 1268+16 (BUTT JT.) (WALNUT ST.)

FILE NAME =	USER NAME = \$USER\$	DESIGNED -	REVISED -	STATE OF ILLINOIS DEPARTMENT OF TRANSPORTATION	TYPICAL SECTIONS #2 & #3			F.A.P. RTE.	SECTION	COUNTY	TOTAL SHEETS	SHEET NO.
et:\pwork\pwork\mccordkr\ad033289\178351-sht-plan.dgn		DRAWN -	REVISED -					329	(19,18,17,103)RS-4	PERRY	34	8
\$MODELNAME\$	PLOT SCALE = 200.0000' / in.	CHECKED -	REVISED -		SCALE: SHEET OF SHEETS STA. TO STA.			CONTRACT NO. 78351				
	PLOT DATE = 3/22/2013	DATE -	REVISED -		ILLINOIS FED. AID PROJECT							

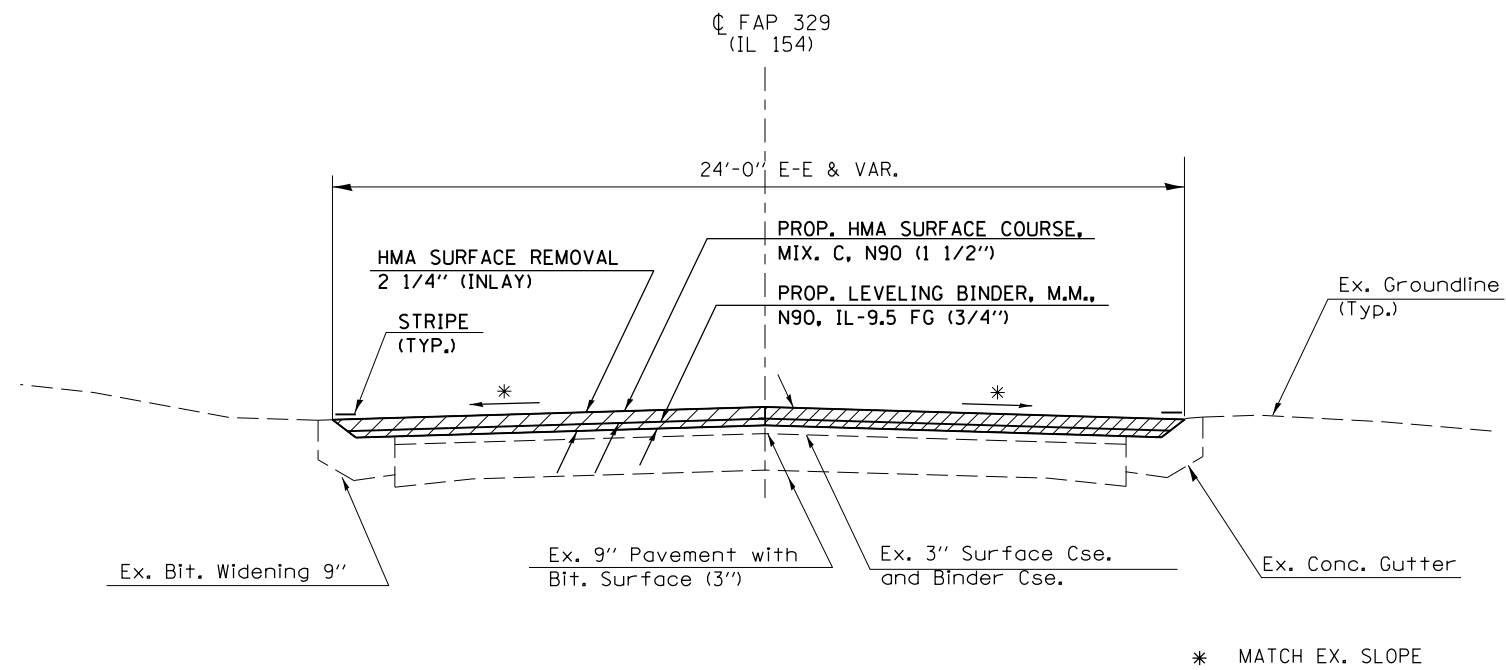
TYPICAL SECTION #4



TO BE USED:
 STA. 455+03 TO STA. 456+52 (SN 073-0028)
 STA. 468+03 TO STA. 569+28 (SN 073-0029)
 STA. 104+80 TO STA. 103+83 (SN 073-0030)
 STA. 671+35 TO STA. 671+85 (SN 073-0053) (SEE NOTE 1)

NOTE 1:
 NO WATERPROOF MEMEBRANE SYSTEM SHALL BE USED ON SN 073-7053.

TYPICAL SECTION #5



TO BE USED:
 STA. 465+00 TO STA. 470+00
 STA. 693+34 TO STA. 701+74

FILE NAME =	USER NAME = \$USER\$	DESIGNED -	REVISED -	STATE OF ILLINOIS DEPARTMENT OF TRANSPORTATION	TYPICAL SECTIONS #4 & #5			F.A.P. RTE.	SECTION	COUNTY	TOTAL SHEETS	SHEET NO.
et:\pw\work\p\dot\mccordkr\ad033289\178351-sht-plen.dgn		DRAWN -	REVISED -					329	(19,18,17,103)RS-4	PERRY	34	9
\$MODELNAME\$	PLOT SCALE = 200.0000' / in.	CHECKED -	REVISED -		SCALE: SHEET OF SHEETS STA. TO STA.			CONTRACT NO. 78351				
	PLOT DATE = 3/22/2013	DATE -	REVISED -		ILLINOIS FED. AID PROJECT							

RESURFACING SCHEDULE

LOCATION STATION TO STATION	LENGTH	ROADWAY WIDTH	SHOULDER WIDTH	ROADWAY AREA	HOT-MIX ASP. SURF. REMOV. - BUTT JT.	TEMP RAMP	HMA SUR. REMOV. - 3/4"	HMA SUR. REMOV. - 2 1/4"	HOT-MIX ASP. SUR. CSE. MIX C. N 90 (1 1/2")	LEVELING BINDER (MM) N90 (1")	BIT. MAT. (PRIME COAT)	AGG. (PRIME COAT)	AGG. SHLDRS. TY. B	NOTES										
															FOR INFORMATIONAL PURPOSE ONLY									
															(FT)	(FT)	(FT)	(SQ YD)	(SQ YD)	(SQ YD)	(SQ YD)	(SQ YD)	(TON)	(TON)
MAINLINE: Sta. 345+54 to Sta. 22+04 (Rural Limits)																								
345+54.00					43.3	15																		
345+54.00	TO	351+08.20	554	26	2	1601			1601		136	69	288	4.8	11									
Eq. Sta. 351+08.2 (bk.) = Sta. 349+00 (ah.)																								
349+00.00	TO	455+03.00	10603	26	2	30631			30631		2586	1302	5,514	91.9	201									
455+03.00	TO	456+52.00	149	26		430					37		39	0.6	SN 073-0028									
456+52.00	TO	465+00.00	848	26	2	2450			2450		207	105	441	7.3	16									
465+00.00	TO	470+00.00	500	24		1333			1334		112	56	240	4.0	Inlay thru gutter section									
470+00.00	TO	568+03.00	9803	26	2	28320			28320		2391	1204	5,098	85.0	186									
568+03.00	TO	569+28.00	125	26		361					31		33	0.5	SN 073-0029									
569+28.00	TO	609+17.20	3989	26	2	11524			11524		973	490	2,074	34.6	76									
Eq. Sta. 609+17.2 (bk.) = Sta. 608+79.2 (ah.)																								
609+79.20	TO	671+35.00	6156	26	2	17783			17783		1501	756	3,201	53.4	117									
671+35.00	TO	671+85.00	50	26	2.0	144					13		13	0.2	1									
671+85.00	TO	693+34.00	2149	26	2	6208			6208		524	264	1,118	18.6	41									
693+34.00	TO	701+74.00	840	24		2240			2240		189	95	403	6.7	Inlay thru gutter section									
701+74.00	TO	747+58.70	4585	26	2	13245			13245		1118	563	2,384	39.7	87									
Eq. Sta. 747+58.7 (bk.) = Sta. 165+21.0 (ah.)																								
165+21.00	TO	104+80.00	6041	26	2	17452			17452		1473	742	3142	52.4	115									
104+80.00	TO	103+63.00	117	26		338					29		31	0.5	SN 073-0030									
103+63.00	TO	22+04.50	8159	26	2	23569			23569		1990	1002	4243	70.7	155									
Rural Sub-totals											43	15	152,783	3,574	13,310	6,648	28,262	471.0	1,006					
Eq. Sta. 22+04.5 (bk.) = Sta. 1343+13.9 (ah.) (Urban Limits Begin)																								
1343+13.90	TO	1340+71.70	242	26	2	700			700		60	30	126	2.1	5									
Eq. Sta. 1340+71.7 (bk.) = Sta. 1340+76.5 (ah.)																								
1340+76.50	TO	1317+74.20	2,302	26	2	6,651			6651		562	283	1197	20.0	44									
Eq. Sta. 1317+74.2 (bk.) = Sta. 1317+95.9 (ah.)																								
1317+95.90	TO	1311+18.00	678	26	2	1,958			1959		165	83	353	5.9	Inlay									
1311+18.00	TO	1307+48.00	370	24		987			987		83	42	178	3.0	Inlay									
1307+48.00	TO	1293+64.00	1,384	26	2	3,998			3998		338	170	720	12.0	26									
1293+64.00							43.3	15																
Omission Railroad Crossing - Sta. 1293+64 to Sta. 1292+54																								
1292+54.00							43.3	15																
1292+54.00	TO	1286+47.00	607	26	2	1,754			1754		149	75	316	5.3	12									
1286+47.00	TO	1268+16.00	1,831	30		6,103			6104		513	257	1,099	18.3	Inlay									
Urban Sub-totals											87	30	13,103	9,050	1,870	940	3,989	67	87					
PROJECT TOTALS											130	45	165,886	12,624	15,180	7,588	32,251	538.0	1,093					

SIDE ROAD SCHEDULE

LOCATION	EXIST. SURFACE	EP WIDTH	WIDTH AT 15' OFFSET	ROADWAY AREA	HOT-MIX ASP. SURF. REMOV. - BUTT JT.	INCIDENTAL HMA SURFACING	BIT. MAT. (PRIME COAT)		
	FOR INFORMATIONAL PURPOSE ONLY								
	(FT)	(FT)	(SQ YD)	(SQ YD)				(TON)	(GAL)
FAP 329 (IL 154)									
RURAL LIMITS									
Lt.	383+86	Babys Breath Rd.	Oil & Chip	55	22	64		11	6
Rt.	397+06	Rock Fork Rd	Oil & Chip	29.0	25.0	45		8	4
Rt.	450+10.9	IL. 150	Bit	126.0	78.0	170	170	15	15
Lt.	517+18	Lost Prairie	Oil & Chip	41.0	35.0	63		11	6
Rt.	600+63	Porcupine Rd	Oil & Chip	67.0	53.0	100		17	9
Rt.	614+95	Rose of Sharon	Oil & Chip	68.0	25.0	78		14	7
Lt.	615+08	Rose of Sharon	Oil & Chip	34.0	25.0	49		9	5
Lt.	667+43	New Church Rd	Bit	88.0	60.0	123	123	11	11
Rt.	667+53	Conant Rd	Bit	134.0	78.0	177	177	15	16
Rt.	725+85	Crocus	Oil & Chip	60.0	42.0	85		15	8
Lt.	725+85	Crocus	Oil & Chip	64.0	45.0	91		16	8
Station decreasing from this point (See Note 1)									
Rt.	146+27	Armadillo Rd	Oil & Chip	40.0	33.0	61		11	6
Lt.	146+27	Armadillo Rd	Agg.	40.0	35.0	63		11	6
Lt.	52+50	Clover Lake Dr.	Oil & Chip	44.0	36.0	67		12	6
Lt.	41+00	Oxbow Rd.	Oil & Chip	42.0	36.0	65		11	6
Lt.	40+36	Oxbow Rd.	Oil & Chip	42.0	36.0	65		11	6
RURAL SUB-TOTALS							470	198	137.0
URBAN LIMITS									
Rt.	1326+72	Fair Grounds Rd.	Bit.	93.0	68.0	134	134	12	12
Lt.	1301+00	Mildred Dr.	Oil & Chip	70.0	31.0	84		15	8
Rt.	1297+20	Lookout St.	Oil & Chip	70.0	31.0	84		15	8
Rt.	1293+77	Water St.	Oil & Chip	65.0	60.0	104		18	9
Rt.	1292+48	Fallon St.	Oil & Chip	59.0	25.0	70		12	6
Rt.	1286+50	Grant St.	Oil & Chip	87.0	56.0	119		21	11
URBAN SUB-TOTALS							134	93	42
PROJECT TOTALS							604	291	179

Note 1: Stationing decreasing from Armadillo Rd. east into Pinckneyville. All Rt. designations are south of centerline, all Lt. designations are north of centerline.

ENTRANCE SCHEDULE

ENTRANCE TYPE	AMOUNT	EXIST. SURFACE	EP WIDTH	WIDTH AT APRON	ROADWAY AREA	INCIDENTAL HMA SURFACING	BIT. MAT. (PRIME COAT)	AGG. SHLDRS. TY. A 6" (See Note 1)	AGG. WEDGE (See Note 2)
		FOR INFORMATIONAL PURPOSE ONLY							
		(TYPE)	(FT)	(FT)	(SQ YD)				
PE	43	Agg.	24.0	12.0	30	258	46		10
PE	1	O&C	24.0	12.0	30	6	1		
PE	2	PCC	24.0	12.0	30	6	2		
PE	3	Bit	24.0	12.0	30	18	3		
CE	4	Agg.	35.0	30.0	54	80	11		
CE	6	O&C	35.0	30.0	54	120	16		
CE	2	PCC	35.0	30.0	54	20	5		
MAILBOX TURNOUTS	26							858	
SUBTOTALS						508	84	858	10

Note 1: Aggregate Shoulders, Type A 6" is for locations at Mailbox Turnouts. See Detail Sht. 28 for Mailbox Turnout Detail.

Note 2: Aggregate Wedge to be paid for as Aggregate Shoulders, Type B.

GUARDRAIL SCHEDULE

LOCATION STATION TO STATION	Existing Length (Inform. Only)	GUARDRAIL REMOVAL	SPBGR. TYPE A. 6 FT. POSTS	TRAFFIC BARRIER TERMINAL, TY. 1 SPL. (TANG)	SPBGR ATTACHED TO STRUCTURE	L. S. GUARDRAIL OVER CULV., 25' SPAN	TERMINAL MARKERS - DA	GUARDRAIL MARKERS TY. A	STRUCTURE REPAIR OF CONC. (+ 5")	STRUCTURE REPAIR OF CONC. (+5")	STONE RIPRAP, CLASS A5
	FOOT	FOOT	FOOT	EACH	FOOT	FOOT	EACH	EACH	S. F.	S. F.	TONS
FAP 329 (IL 154)											
073-7046 (North Side)											
LT 488+32.50				1			1				
LT 488+54.00 TO LT 489+44.00	90	90									
LT 488+82.50 TO LT 489+20.00					37.5			4			
LT 489+70.00				1			1				
073-7048 (North Side)											
LT 530+21.50				1			1				
LT 530+42.00 TO LT 531+32.00	90	90									
LT 530+71.50 TO LT 531+09.00					37.5			4			
LT 531+59.00				1			1				
073-7048 (South Side)											
RT 530+21.00				1			1				
RT 530+64.00 TO RT 531+28.00	64	64									
RT 530+50.00 TO RT 530+71.00								2			
RT 530+71.00 TO RT 531+08.50					37.5			2	1.5		
RT 531+58.50				1			1				
073-7050 (North Side)											
LT 577+65.00											65
073-7051 (North Side)											
LT 624+70.00				1			1				
LT 624+94.00 TO LT 625+69.00	75	75									
LT 625+20.00 TO LT 625+45.00					25			2	18.8		
LT 625+45.00 TO LT 625+70.00			25					2			
LT 626+20.00				1			1				
073-7051 (South Side)											
RT 623+95.00				1			1				
RT 625+09.00 TO RT 625+79.00	70	70									
RT 624+45.00 TO RT 626+20.00						175		4	11.3		
RT 626+70.00				1			1				
073-7055 (North Side) (Stationing decreasing)											
LT 139+35.50				1			1				
LT 139+16.00 TO LT 138+26.00	90	90									
LT 138+85.50 TO LT 138+48.00					37.5			4			
LT 137+98.00				1			1				
073-7055 (South Side)											
RT 138+98.00				1			1				
RT 139+20.00 TO RT 138+30.00	90	90									
RT 138+48.00 TO RT 138+10.50					37.5			4			
RT 137+60.50				1			1				
073-7056 (North Side)											
LT 61+43.00				1			1				
LT 61+45.00 TO LT 60+55.00	90	90									
LT 60+93.00 TO LT 59+93.00			100					4			
LT 59+43.00				1			1				
073-7056 (South Side)											
RT 61+94.00				1			1				
RT 61+45.00 TO RT 60+55.00	90	90									
RT 61+44.00 TO RT 60+56.50			87.5					4			
RT 60+06.50				1			1				
073-7057 (North Side)											
LT 1332+07.00				1			1				
LT 1331+75.00 TO LT 1330+98.00	77	77									
LT 1331+57.00 TO LT 1330+57.00			100					4			
LT 1330+07.00				1			1				
PROJECT TOTALS:		826	312.5	20	212.5	175	20	40	20.3	11.3	65

Note 1: Any widening necessary to construct the Type 1, Special (Tangent) Guardrail Terminal shall be included in the cost of the TRAFFIC BARRIER TERMINAL, TYPE 1 SPECIAL (TANGENT).

FILE NAME :	USER NAME : \$USER\$	DESIGNED -	REVISED -	STATE OF ILLINOIS DEPARTMENT OF TRANSPORTATION	GUARDRAIL SCHEDULE	F.A.P. RTE.	SECTION	COUNTY	TOTAL SHEETS	SHEET NO.	
c:\pwwork\pwwork\mccordkr\d0332891\78351-sht-plan.dgn		DRAWN -	REVISED -			329	(19,18,17,103)RS-4	PERRY	34	12	
\$MODELNAME\$		CHECKED -	REVISED -			CONTRACT NO. 78351					
	PLOT SCALE : 200.0000' / in.	DATE -	REVISED -			SCALE:	SHEET	OF	SHEETS	STA.	TO

PAVEMENT MARKING SCHEDULE

STATION TO STATION				WET REFLECTIVE THERMOPLASTIC PAVEMENT MARKING - LINE 4"			WR THPL PAVT. MARK. - LINE 6"	WR THPL PAVT. MARK. - LINE 24"	WR THPL PAVT. MARK. - LTRS. & SYMB.
				4 INCH WHITE (EDGE LINE)	4 INCH YELLOW (NO PASS ZONE)	4 INCH (SKIP-DASH)	CROSSWALK	STOP BARS	
				FOOT	FOOT	FOOT	FOOT	FOOT	
MAINLINE: Sta. 345+54 to Sta. 22+04 (Rural Limits)									
LT	345+54.0	TO	351+08.2	554		139			
RT	345+54.0	TO	351+08.2	554					
Eq. Sta. 351+08.2 (bk.) = Sta. 349+00 (ah.)									
LT	349+00.0	TO	455+03.0	10,603		2651			
RT	349+00.0	TO	449+56.0	10,056.0					
LT	456+52.0	TO	568+02.0	11,150.0					
LT	569+27.0	TO	608+76.2	3,949.2					
RT	450+90.0	TO	455+03.0	413.0					
RT	456+52.0	TO	568+02.0	11,150.0					
RT	569+27.0	TO	608+76.2	3,949.2					
RT	449+06.0	TO	468+60.0		1,954.0				
RT	450+10.5	(STOP BAR @ IL. 150)					29		
LT	470+71.0	TO	486+02.0		1,531.0				
RT	575+71.0	TO	591+34.0		1,563.0				
LT	584+47.0	TO	602+43.0		1,796.0				
	456+52.0	TO	584+47.0			3,199			
	591+34.0	TO	608+76.2			436			
Eq. Sta. 608+76.2 (bk.) = Sta. 609+17.2 (ah.)									
RT	609+17.2	TO	747+58.7	13,841.5					
LT	609+17.2	TO	747+58.7	13,841.5					
	609+17.2	TO	663+56.0			1,360			
	684+41.0	TO	689+43.0			126			
	694+55.0	TO	702+21.0			192			
	713+72.0	TO	747+58.7			847			
RT	654+21.0	TO	684+41.0		3,020.0				
LT	663+56.0	TO	694+55.0		3,099.0				
RT	689+43.0	TO	713+72.0		2,429.0				
LT	702+21.0	TO	719+47.0		1,726.0				
RT	722+69.0	TO	732+72.0		1,003.0				
LT	733+88.0	TO	744+10.0		1,022.0				
Eq. Sta. 747+58.7 (bk.) = Sta. 165+21 (ah.) (SEE NOTE 1)									
LT	165+21.0	TO	104+80.0	6,041					
RT	165+21.0	TO	104+80.0	6,041					
LT	103+63.0	TO	22+04.5	8,158.5					
RT	103+63.0	TO	22+04.5	8,158.5					

NOTE 1: STATIONING IS DECREASING FROM WEST TO EAST. ALL MEASUREMENTS REFLECT THIS. THEREFORE LT. IS ON NORTH SIDE OF CENTERLINE AND RT. IS ON SOUTH SIDE OF CENTERLINE.

FILE NAME =	USER NAME = \$USER\$	DESIGNED -	REVISED -	STATE OF ILLINOIS DEPARTMENT OF TRANSPORTATION	PAVEMENT MARKING SCHEDULE	F.A.P. RTE.	SECTION	COUNTY	TOTAL SHEETS	SHEET NO.	
et:\pwork\pwork\mccordkr\ad033289\178351-sht-plan.dgn		DRAWN -	REVISED -			329	(19,18,17,103)RS-4	PERRY	34	13	
\$MODELNAME\$		CHECKED -	REVISED -			CONTRACT NO. 78351					
	PLOT DATE = 3/22/2013	DATE -	REVISED -			SCALE:	SHEET	OF	SHEETS	STA.	TO

PAVEMENT MARKING SCHEDULE
(CONT.)

STATION TO STATION				WET REFLECTIVE THERMOPLASTIC PAVEMENT MARKING - LINE 4"			WR THPL PAVT. MARK. - LINE 6"	WR THPL PAVT. MARK. - LINE 24"	WR THPL PAVT. MARK. - LTRS. & SYMB.
				4 INCH WHITE (EDGE LINE)	4 INCH YELLOW (NO PASS ZONE)	4 INCH (SKIP-DASH)	CROSSWALK	STOP BARS	
				FOOT	FOOT	FOOT	FOOT	FOOT	
RT	157+08.0	TO	149+64.0		744				
LT	141+46.0	TO	139+35.0		211				
RT	141+46.0	TO	132+75.0		871				
LT	132+75.0	TO	123+35.0		940				
RT	126+94.0	TO	122+19.0		475				
LT	116+43.0	TO	110+83.0		560				
RT	99+85.0	TO	90+87.0		898				
LT	88+23.0	TO	79+78.0		845				
RT	30+65.0	TO	22+04.5		861				
	165+21.0	TO	141+46.0			594			
	139+35.0	TO	126+94.0			310			
	123+35.0	TO	104+80.0			464			
	103+63.0	TO	22+04.5			2040			
RURAL SUB-TOTALS				108,461	25,548	12,358	0	29	0
Eq. Sta. 22+04.5 (ah.) = Sta. 1343+13.9 (bk.) (Urban Limits Begin) (SEE NOTE 1)									
RT	1343+13.9	TO	1340+71.7	242.2					
LT	1343+13.9		1340+71.7	242.2					
RT	1343+13.9	TO	1340+71.7		242				
	1343+13.9	TO	1340+71.7			61			
Eq. Sta. 1340+71.7 (ah.) = Sta. 1340+76.5 (bk.) (SEE NOTE 1)									
LT	1340+76.5	TO	1317+74.2	2,302					
RT	1340+76.5	TO	1327+23.0	1,354					
RT	1326+26.0	TO	1317+74.2	852					
RT	1326+72.0	(STOP BAR @ WYE)						20	
RT	1340+76.0		1317+79.2		2297				
LT	1339+45.0		1317+79.2		2166				
RT	1340+76.5	TO	1339+45.0			33			
Eq. Sta. 1317+74.2 (ah.) = Sta. 1317+95.9 (bk.) (SEE NOTE 1)									
LT	1316+25.0	(STOP BAR @ S. R.)						13	
LT	1316+00.0	TO	1307+48.0	852					
RT	1315+50.0	TO	1307+48.0	802					
LT	1307+48.0	TO	1293+64.0	1,384					
RT	1307+48.0	TO	1293+64.0	1,384					
RT	1296+84.0	(RR XING STOP BAR)						13	
RT	1296+59.0	(RRXING 2-R'S)							7.2
RT	1296+59.0	(RRXING 1-X)							54.0

NOTE 1: STATIONING IS DECREASING FROM WEST TO EAST. ALL MEASUREMENTS REFLECT THIS. THEREFORE LT. IS ON NORTH SIDE OF CENTERLINE AND RT. IS ON SOUTH SIDE OF CENTERLINE.

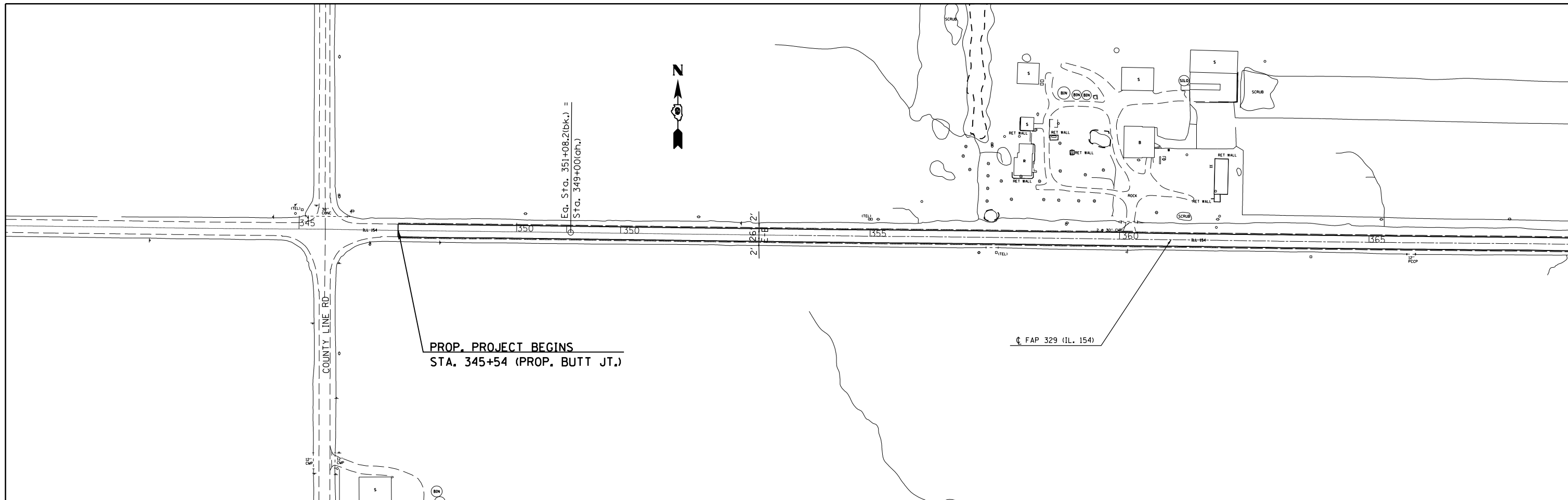
FILE NAME =	USER NAME = \$USER\$	DESIGNED -	REVISED -	STATE OF ILLINOIS DEPARTMENT OF TRANSPORTATION	PAVEMENT MARKING SCHEDULE (CONTINUED)	F.A.P. RTE.	SECTION	COUNTY	TOTAL SHEETS	SHEET NO.	
et:\pwork\pwork\mccordkr\033289\178351-sht-plan.dgn		DRAWN -	REVISED -			329	(19,18,17,103)RS-4	PERRY	34	14	
\$MODELNAME\$		CHECKED -	REVISED -			CONTRACT NO. 78351					
	PLOT DATE = 3/22/2013	DATE -	REVISED -			SCALE:	SHEET	OF	SHEETS	STA.	TO

PAVEMENT MARKING SCHEDULE
(CONT.)

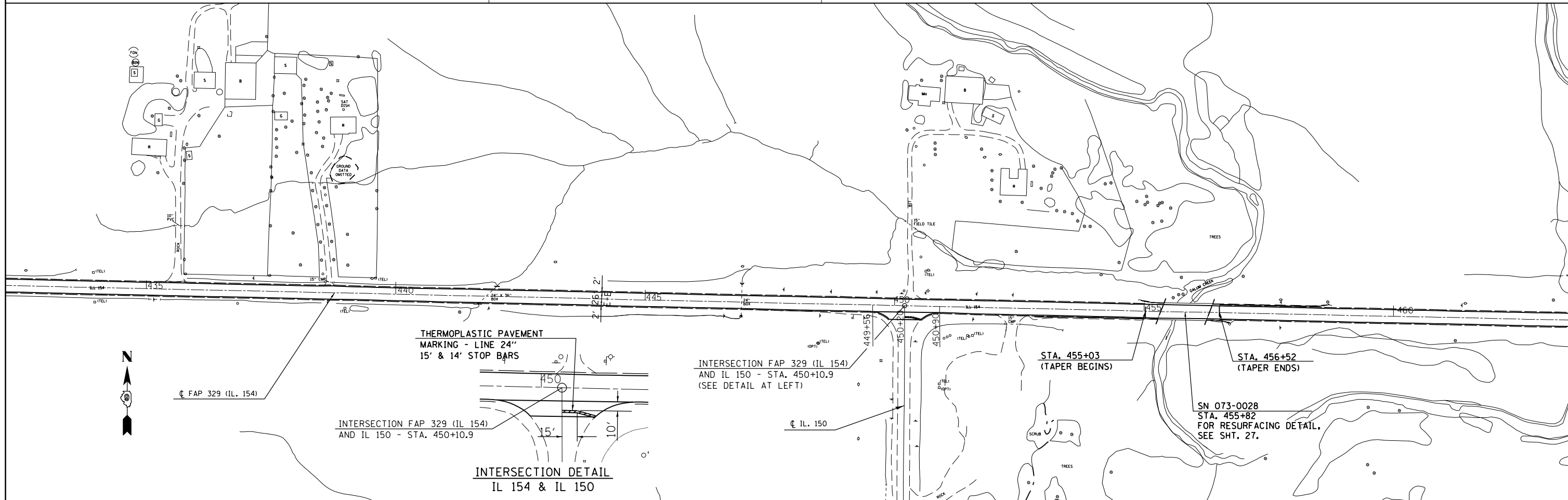
STATION TO STATION			WET REFLECTIVE THERMOPLASTIC PAVEMENT MARKING - LINE 4"			WR THPL PAVT. MARK. - LINE 6"	WR THPL PAVT. MARK. - LINE 24"	WR THPL PAVT. MARK. - LTRS. & SYMB.
			4 INCH WHITE (EDGE LINE)	4 INCH YELLOW (NO PASS ZONE)	4 INCH (SKIP-DASH)	CROSSWALK	STOP BARS	
			FOOT	FOOT	FOOT	FOOT	FOOT	
RT	1296+34.0	(RR XING STOP BAR)					13	
RT	1293+77.0	(RR XING STOP BAR)					13	
LT	1292+45.0	(RR XING STOP BAR)					13	
LT	1290+12.0	(RR XING STOP BAR)					13	
LT	1289+87.0	(RRXING 2-R' S)						7.2
LT	1289+87.0	(RRXING 1-X)						54.0
LT	1289+62.0	(RR XING STOP BAR)					13	
LT	1292+48.0	TO 1286+47.0	601					
RT	1292+48.0	TO 1286+47.0	601					
RT	1268+28.0						13	
RT	1268+16.0				71			
LT	1317+95.9	TO 1307+48.0		1048				
RT	1317+95.9	TO 1307+48.0		1048				
LT	1307+48.0	TO 1302+65.0		483				
RT	1307+48.0	TO 1293+64.0		1384				
LT	1292+54.0	TO 1288+23.0		431				
RT	1288+24.0	TO 1281+74.0		650				
LT	1280+58.0	TO 1274+98.0		560				
	1307+48.0	TO 1268+16.0			983			
URBAN SUB-TOTALS			10,616	10,309	1,077	71	124	122.4
TOTALS			168,369			71	153	122.4

NOTE 1: STATIONING IS DECREASING FROM WEST TO EAST. ALL MEASUREMENTS REFLECT THIS. THEREFORE LT. IS ON NORTH SIDE OF CENTERLINE AND RT. IS ON SOUTH SIDE OF CENTERLINE.

NOTE 2: STOP BARS AT INTERSECTIONS SHALL BE PLACED 10 FEET BACK FROM EDGE OF PAVEMENT OR AS DIRECTED BY THE ENGINEER.



FILE NAME =	USER NAME = \$USER\$	DESIGNED -	REVISED -	STATE OF ILLINOIS DEPARTMENT OF TRANSPORTATION	PLAN LAYOUT			F.A.P. RTE.	SECTION	COUNTY	TOTAL SHEETS	SHEET NO.	
c:\pw\work\p\dot\mccordkr\ad033289\178351-sht-plan.dgn		DRAWN -	REVISED -		SCALE:	SHEET	OF	SHEETS	329	(19,18,17,103)RS-4	PERRY	34	16
#MODELNAME#	PLOT SCALE = 200.0000' / in.	CHECKED -	REVISED -		STA. 345+54	TO STA. 400+00		CONTRACT NO. 78351			ILLINOIS FED. AID PROJECT		
	PLOT DATE = 3/22/2013	DATE -	REVISED -										



FILE NAME =
 c:\pwwork\pwwork\mccordkr\ad033289\178351-sht-plan.dgn

USER NAME = \$USER\$
 PLOT SCALE = 200.0000' / in.
 PLOT DATE = 3/22/2013

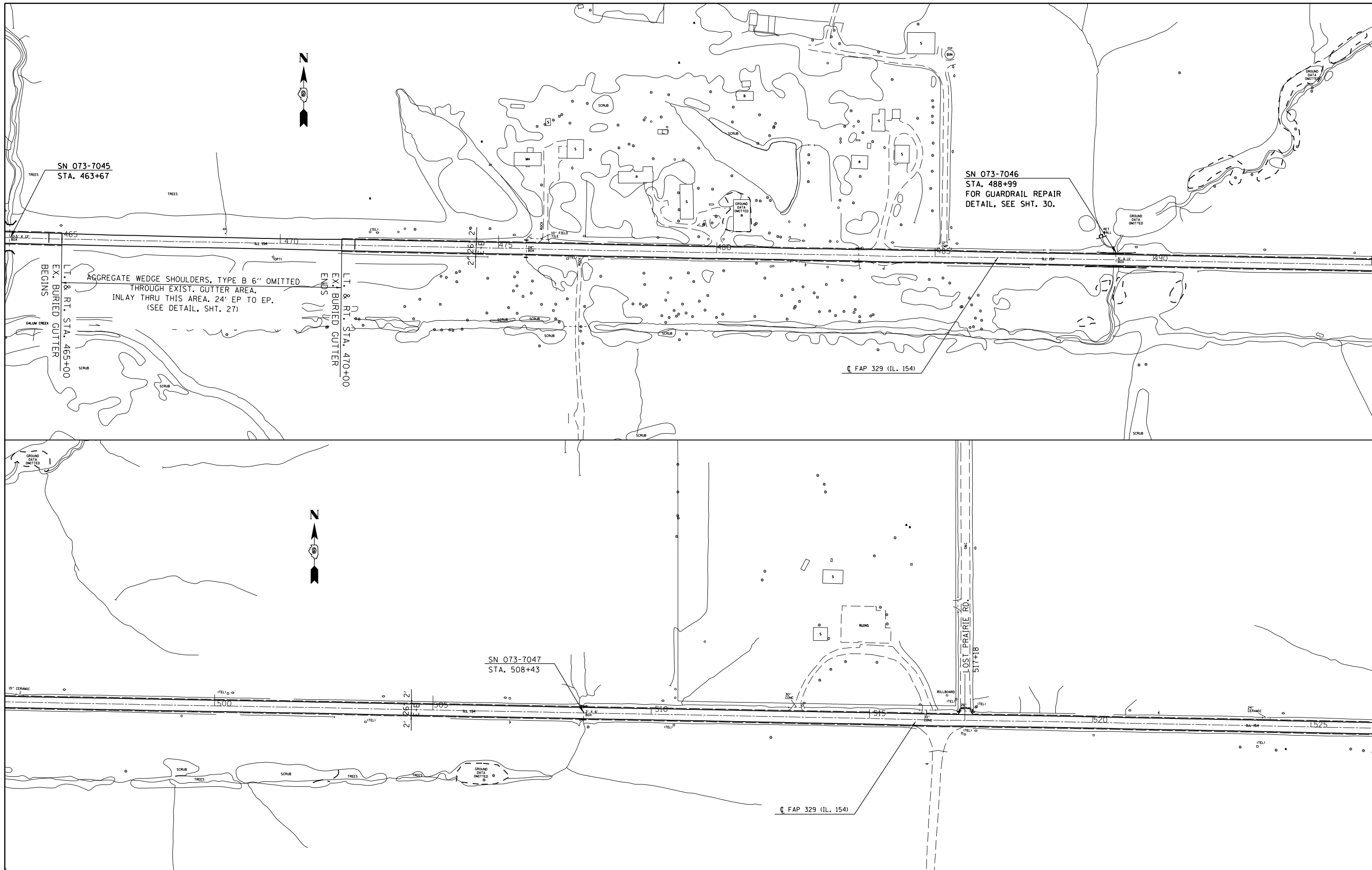
DESIGNED -
 DRAWN -
 CHECKED -
 DATE -

REVISED -
 REVISED -
 REVISED -
 REVISED -

**STATE OF ILLINOIS
 DEPARTMENT OF TRANSPORTATION**

PLAN LAYOUT
 SCALE: SHEET OF SHEETS STA. 400+00 TO STA. 463+00

F.A.P. RTE.	SECTION	COUNTY	TOTAL SHEETS	SHEET NO.
329	(19,18,17,103)RS-4	PERRY	34	17
CONTRACT NO. 78351				
ILLINOIS FED. AID PROJECT				

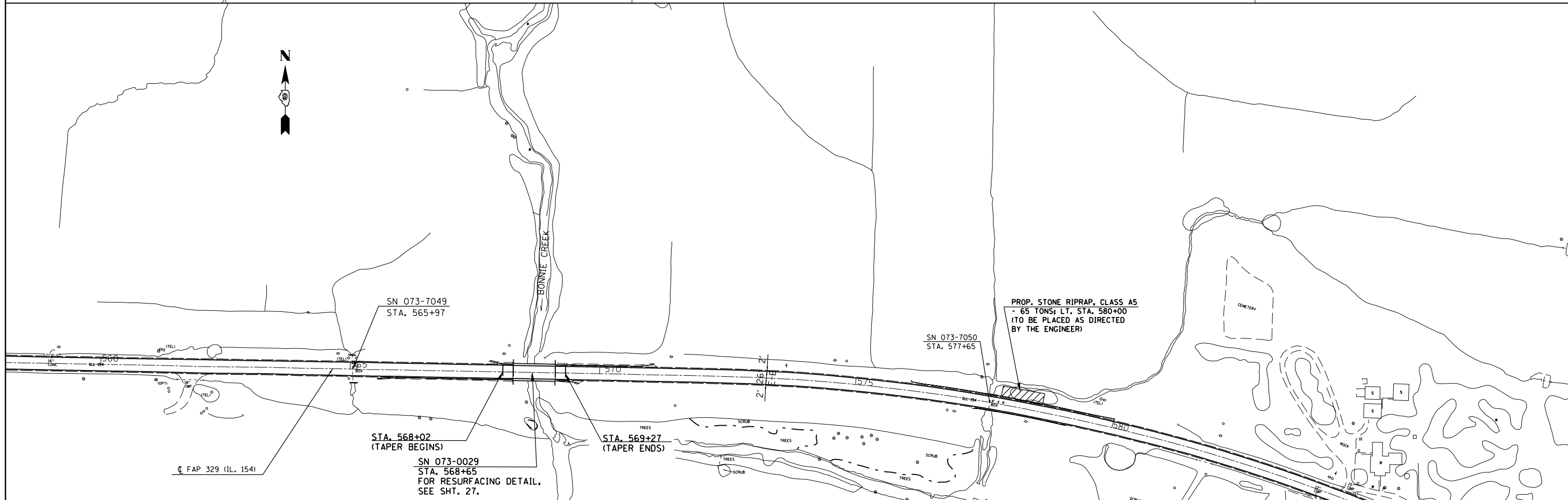


FILE NAME =	USER NAME = #USER#	DESIGNED -	REVISED -
ei:\pw\work\p\dot\mccordkr\ad033289\178351-sht-plan.dgn		DRAWN -	REVISED -
	PLOT SCALE = 200.0000' / in.	CHECKED -	REVISED -
#MODELNAME#	PLOT DATE = 3/22/2013	DATE -	REVISED -

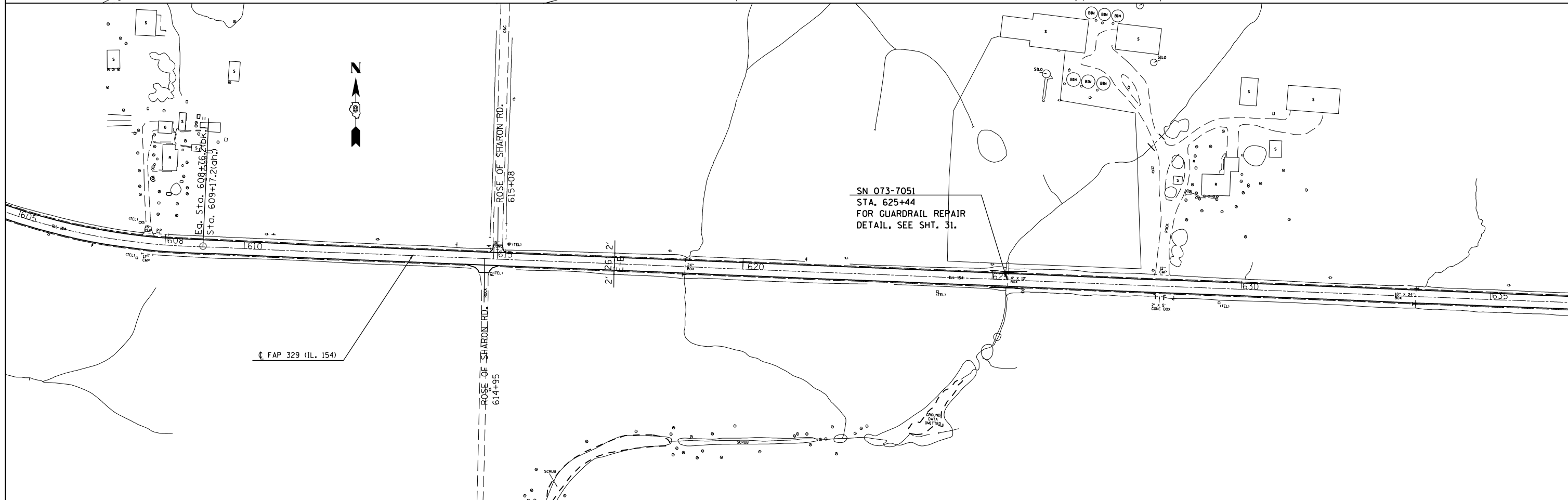
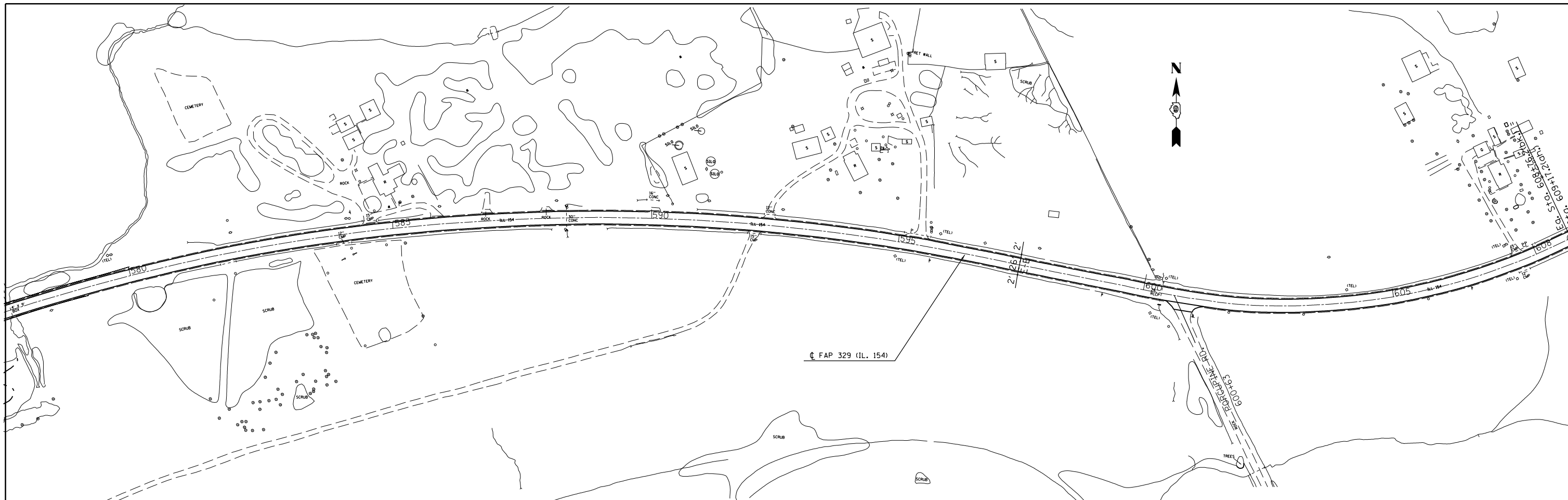
**STATE OF ILLINOIS
DEPARTMENT OF TRANSPORTATION**

PLAN LAYOUT	
SCALE:	SHEET OF SHEETS STA. 463+00 TO STA. 526+00

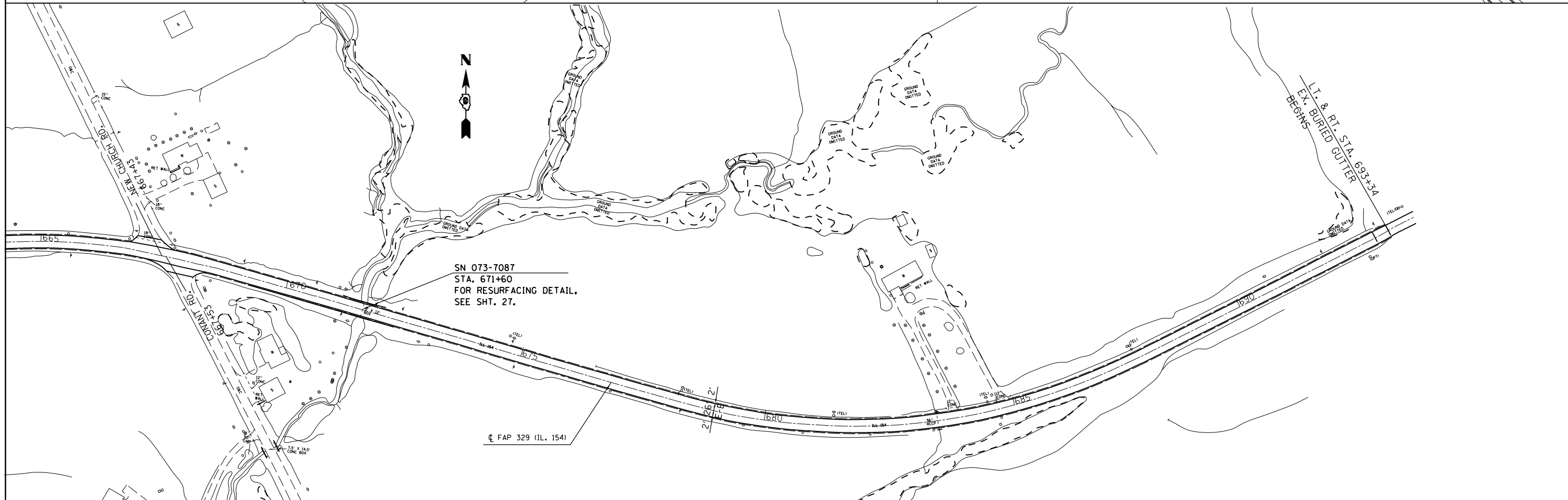
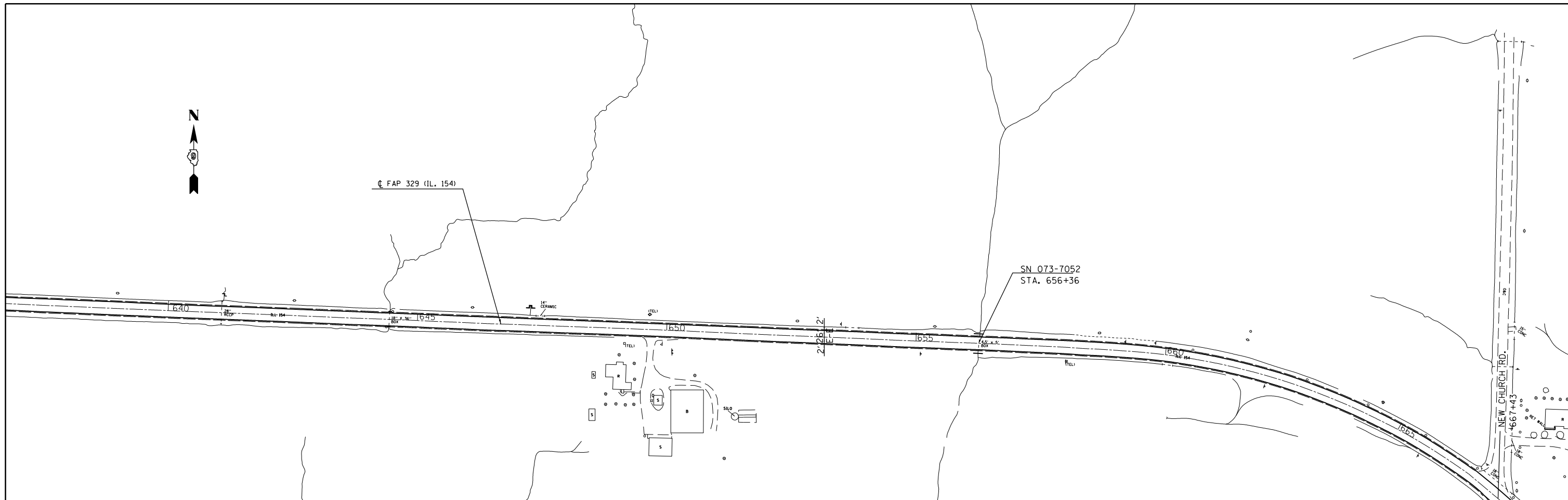
F.A.P. RTE.	SECTION	COUNTY	TOTAL SHEETS	SHEET NO.
329	(19,18,17,103)RS-4	PERRY	34	18
CONTRACT NO. 78351				
ILLINOIS FED. AID PROJECT				



FILE NAME =	USER NAME = \$USER\$	DESIGNED -	REVISED -	STATE OF ILLINOIS DEPARTMENT OF TRANSPORTATION	PLAN LAYOUT			F.A.P. RTE.	SECTION	COUNTY	TOTAL SHEETS	SHEET NO.
et:\pw\work\p\midot\mccordkr\ad033289\178361-sht-plan.dgn		DRAWN -	REVISED -		329	(19,18,17,103)RS-4	PERRY	34	19	CONTRACT NO. 78351		
#MODELNAME#	PLOT SCALE = 200.0000' / in.	CHECKED -	REVISED -		SCALE:	SHEET	OF	SHEETS	STA. 526+00	TO STA. 580+00	ILLINOIS FED. AID PROJECT	
	PLOT DATE = 3/22/2013	DATE -	REVISED -									



FILE NAME =	USER NAME = \$USER\$	DESIGNED -	REVISED -	STATE OF ILLINOIS DEPARTMENT OF TRANSPORTATION	PLAN LAYOUT			F.A.P. RTE.	SECTION	COUNTY	TOTAL SHEETS	SHEET NO.			
c:\pw\work\p\dot\mccordkr\ad033289\178351-sht-plan.dgn		DRAWN -	REVISED -		SCALE:	SHEET	OF	SHEETS	STA. 580+00	TO STA. 636+00	329	(19,18,17,103)RS-4	PERRY	34	20
MODELNAME	PLOT SCALE = 200.0000' / in.	CHECKED -	REVISED -		CONTRACT NO. 78351										
	PLOT DATE = 3/22/2013	DATE -	REVISED -		ILLINOIS FED. AID PROJECT										



FILE NAME =	USER NAME = \$USERS	DESIGNED -	REVISED -	STATE OF ILLINOIS DEPARTMENT OF TRANSPORTATION	PLAN LAYOUT			F.A.P. RTE.	SECTION	COUNTY	TOTAL SHEETS	SHEET NO.			
c:\pwork\pwork\mccordkr\ad033289\178361-sht-plan.dgn		DRAWN -	REVISED -		SCALE:	SHEET	OF	SHEETS	STA. 636+00	TO STA. 693+34	329	(19,18,17,103)RS-4	PERRY	34	21
MODELNAME	PLOT SCALE = 200.0000' / in.	CHECKED -	REVISED -		CONTRACT NO. 78351										
	PLOT DATE = 3/22/2013	DATE -	REVISED -		ILLINOIS FED. AID PROJECT										



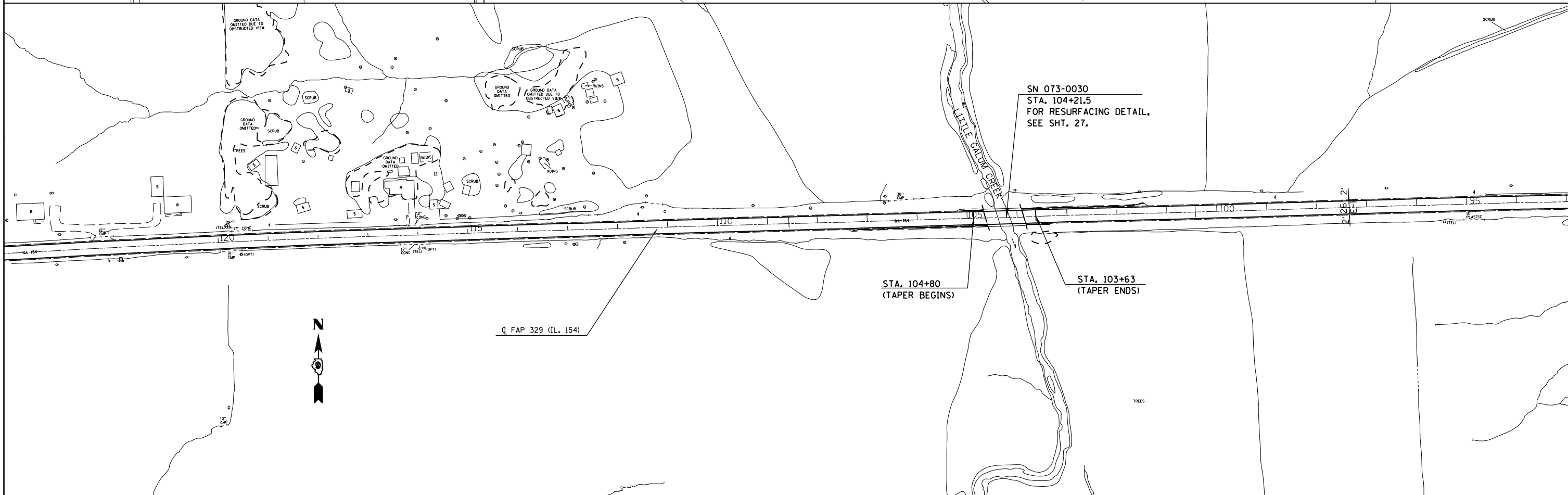
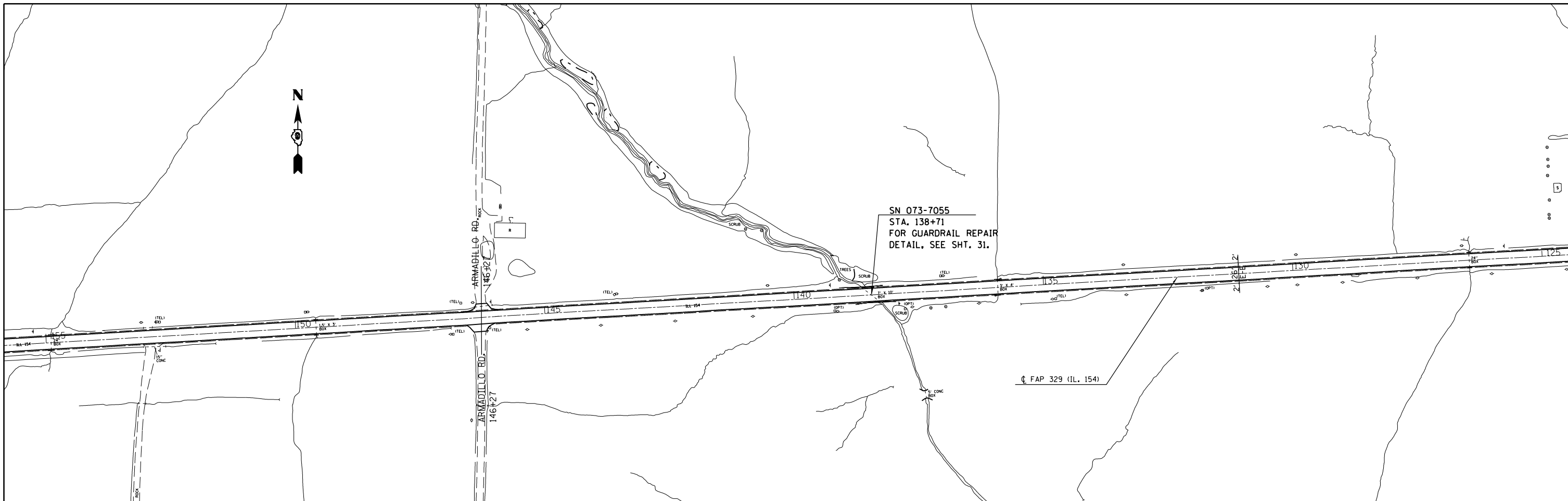
FILE NAME =	USER NAME = \$USER\$	DESIGNED -	REVISED -
c:\pwwork\p\dot\mccordkr\ad033289\178351-sht-plan.dgn		DRAWN -	REVISED -
	PLOT SCALE = 200.0000' / in.	CHECKED -	REVISED -
MODELNAME	PLOT DATE = 3/22/2013	DATE -	REVISED -

**STATE OF ILLINOIS
DEPARTMENT OF TRANSPORTATION**

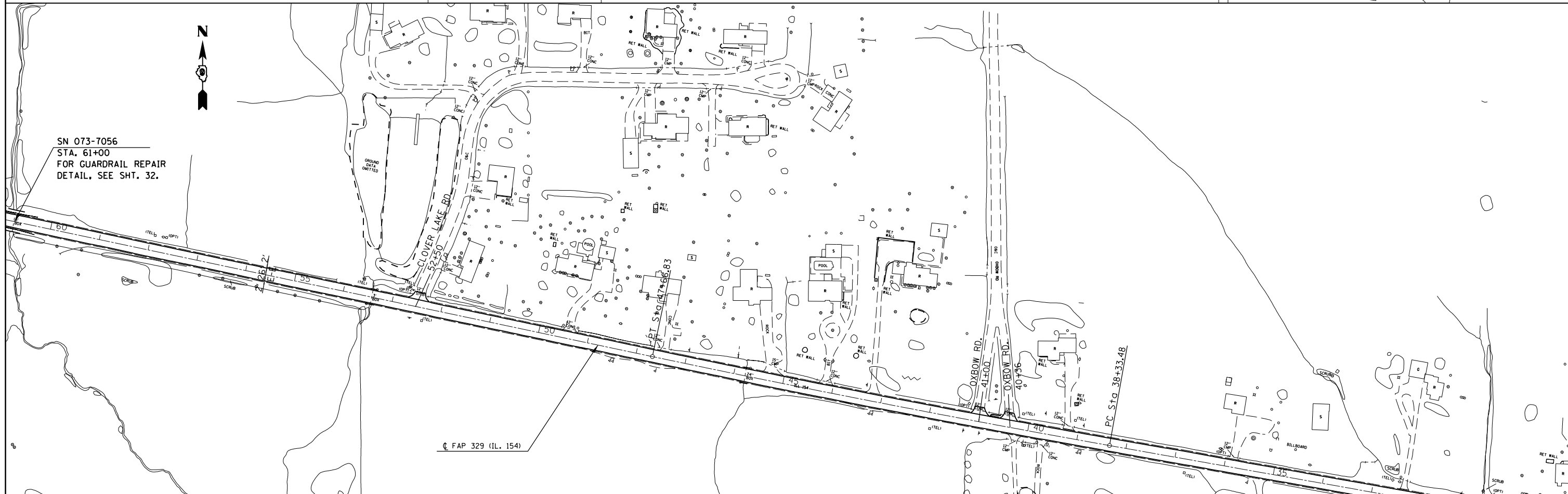
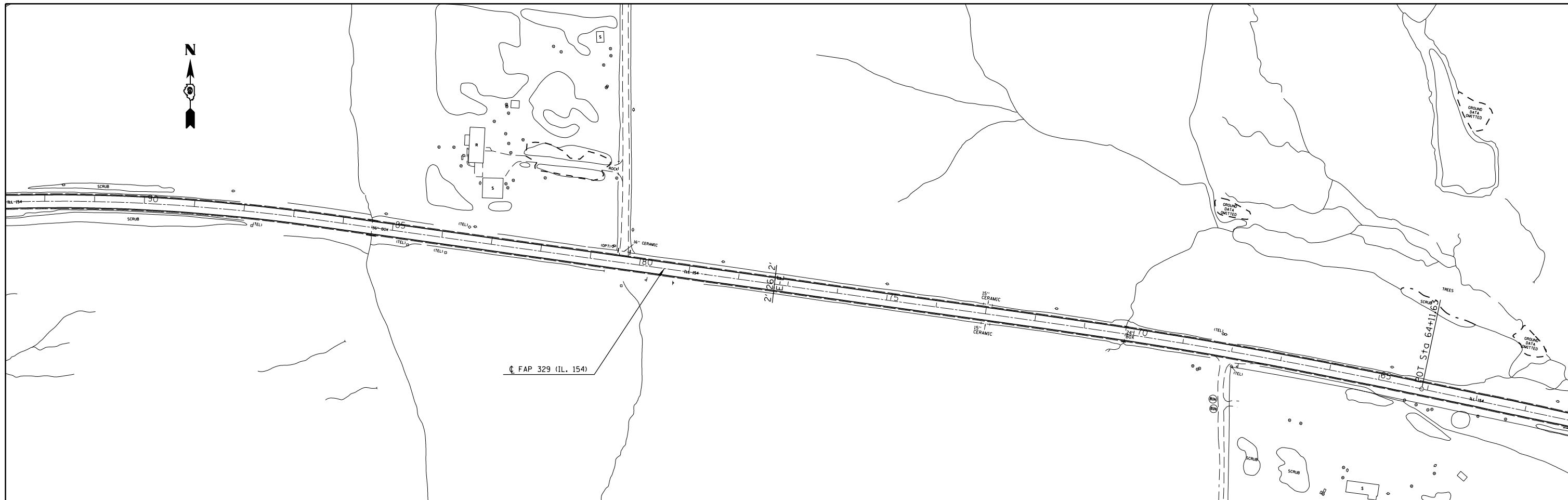
PLAN LAYOUT

SCALE: SHEET OF SHEETS STA. 693+34 TO STA. 156+00

F.A.P. RTE.	SECTION	COUNTY	TOTAL SHEETS	SHEET NO.
329	(19,18,17,103)RS-4	PERRY	34	22
CONTRACT NO. 78351				
ILLINOIS FED. AID PROJECT				



FILE NAME =	USER NAME = \$USER\$	DESIGNED -	REVISED -	STATE OF ILLINOIS DEPARTMENT OF TRANSPORTATION	PLAN LAYOUT			F.A.P. RTE.	SECTION	COUNTY	TOTAL SHEETS	SHEET NO.			
c:\pwwork\pwwork\mccordkr\ad033289\178361-sht-plan.dgn		DRAWN -	REVISED -		SCALE:	SHEET	OF	SHEETS	STA. 156+00	TO STA. 93+00	329	(19,18,17,103)RS-4	PERRY	34	23
#MODELNAME#	PLOT SCALE = 200.0000' / in.	CHECKED -	REVISED -		CONTRACT NO. 78351										
	PLOT DATE = 3/22/2013	DATE -	REVISED -		ILLINOIS FED. AID PROJECT										

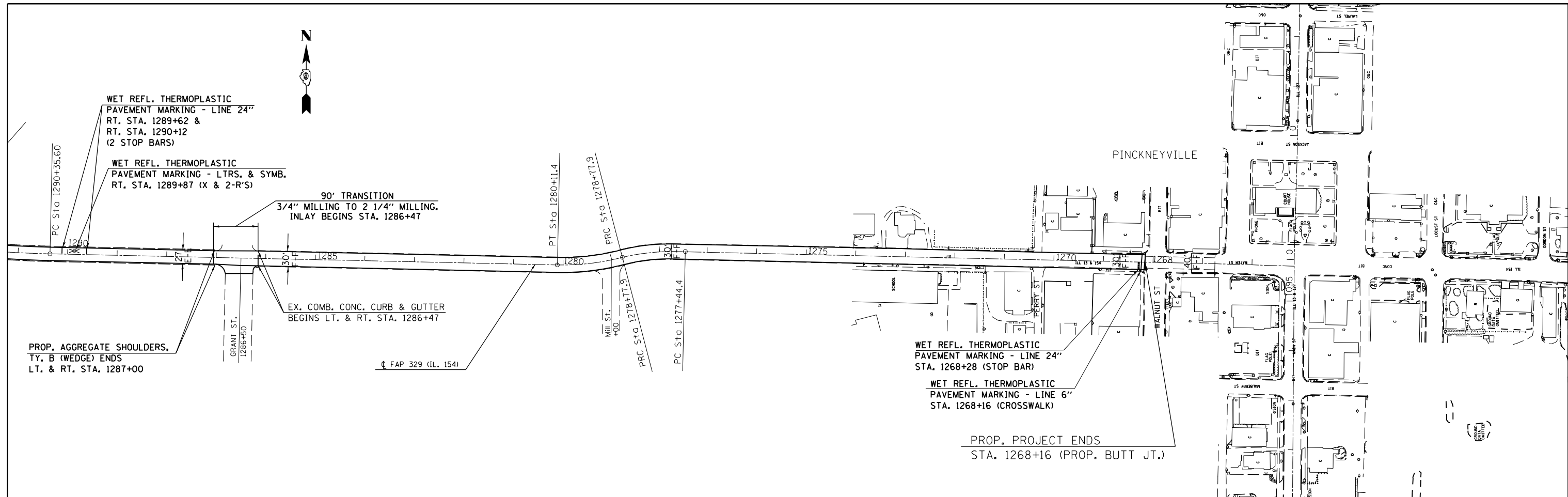


FILE NAME =	USER NAME = \$USER\$	DESIGNED -	REVISED -
c:\pwwork\pwwork\mccordkr\d033289\178351-sht-plan.dgn		DRAWN -	REVISED -
	PLOT SCALE = 200.0000' / in.	CHECKED -	REVISED -
#MODELNAME#	PLOT DATE = 3/22/2013	DATE -	REVISED -

**STATE OF ILLINOIS
DEPARTMENT OF TRANSPORTATION**

PLAN LAYOUT	
SCALE:	SHEET OF SHEETS STA. 93+00 TO STA. 33+00

F.A.P. RTE.	SECTION	COUNTY	TOTAL SHEETS	SHEET NO.
329	(19,18,17,103)RS-4	PERRY	34	24
CONTRACT NO. 78351				
ILLINOIS FED. AID PROJECT				



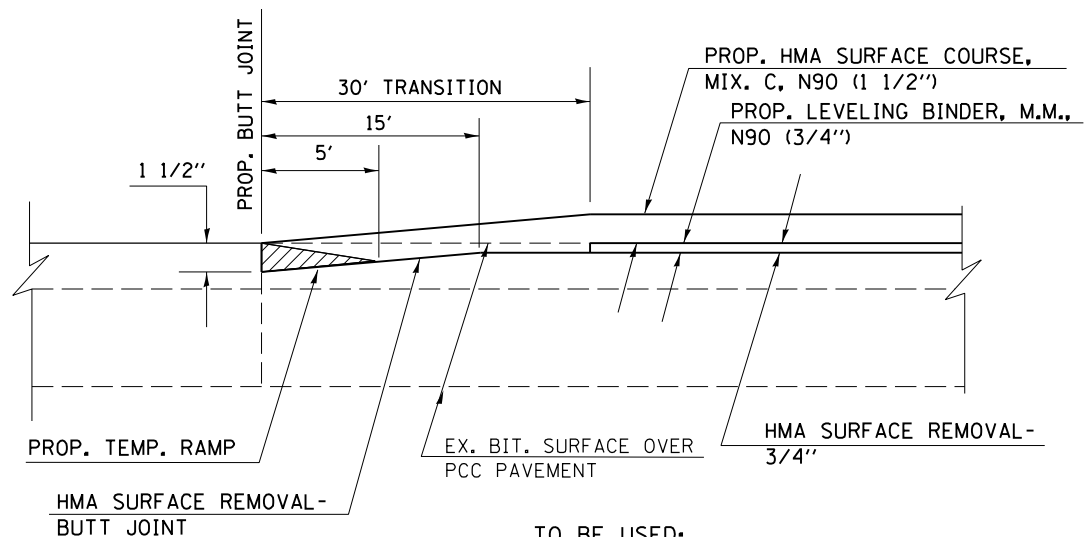
FILE NAME =	USER NAME = \$USER\$	DESIGNED -	REVISED -
c:\pwwork\pwwork\mccordkr\d0332891\78351-sht-plan.dgn		DRAWN -	REVISED -
	PLOT SCALE = 200.0000' / in.	CHECKED -	REVISED -
MODELNAME	PLOT DATE = 3/22/2013	DATE -	REVISED -

**STATE OF ILLINOIS
DEPARTMENT OF TRANSPORTATION**

SCALE:		SHEET OF SHEETS		STA. 1291+00 TO STA. 1268+16	
				PLAN LAYOUT	

F.A.P. RTE.	SECTION	COUNTY	TOTAL SHEETS	SHEET NO.
329	(19,18,17,103)RS-4	PERRY	34	26
CONTRACT NO. 78351				
ILLINOIS FED. AID PROJECT				

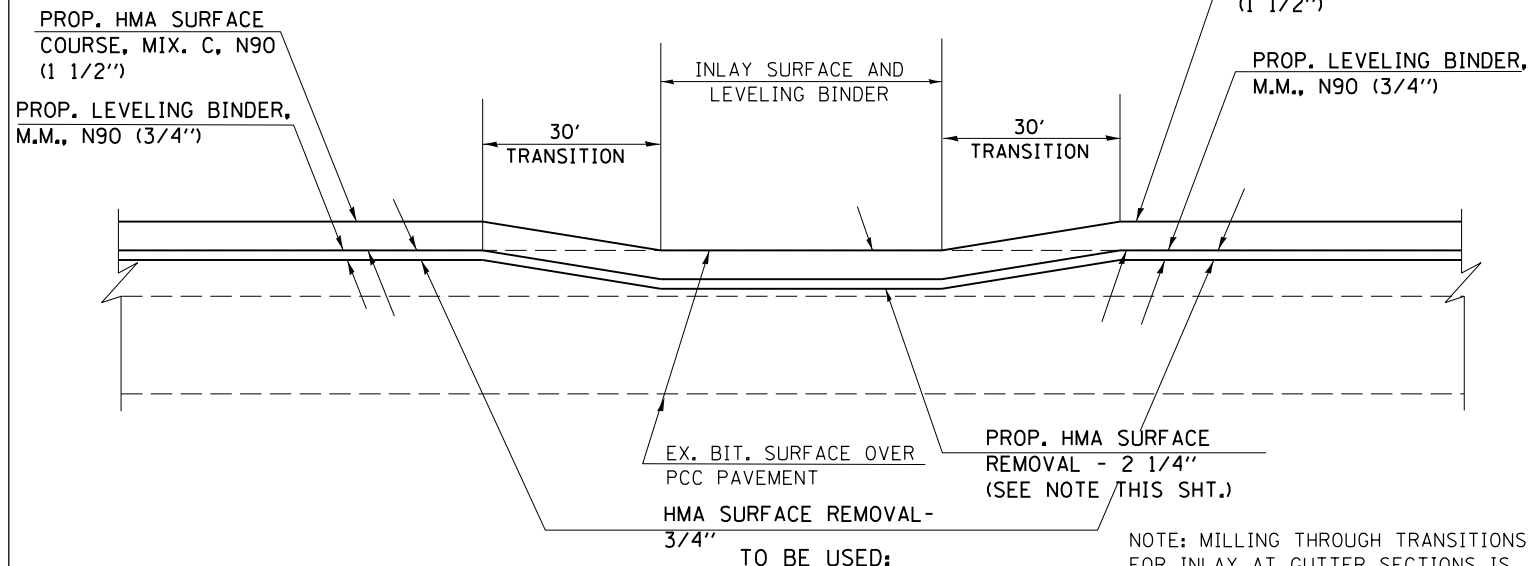
DETAIL FOR
BUTT JOINT TRANSITION



TO BE USED:

- STA. 345+54 (BEGINNING OF PROJECT)
- STA. 1307+48 (AT RR OVERPASS)
- STA. 1293+64 (AT RR CROSSING)
- STA. 1292+54 (AT RR CROSSING)

DETAIL FOR INLAY
THROUGH GUTTER SECTIONS
AND RAILROAD UNDERPASS



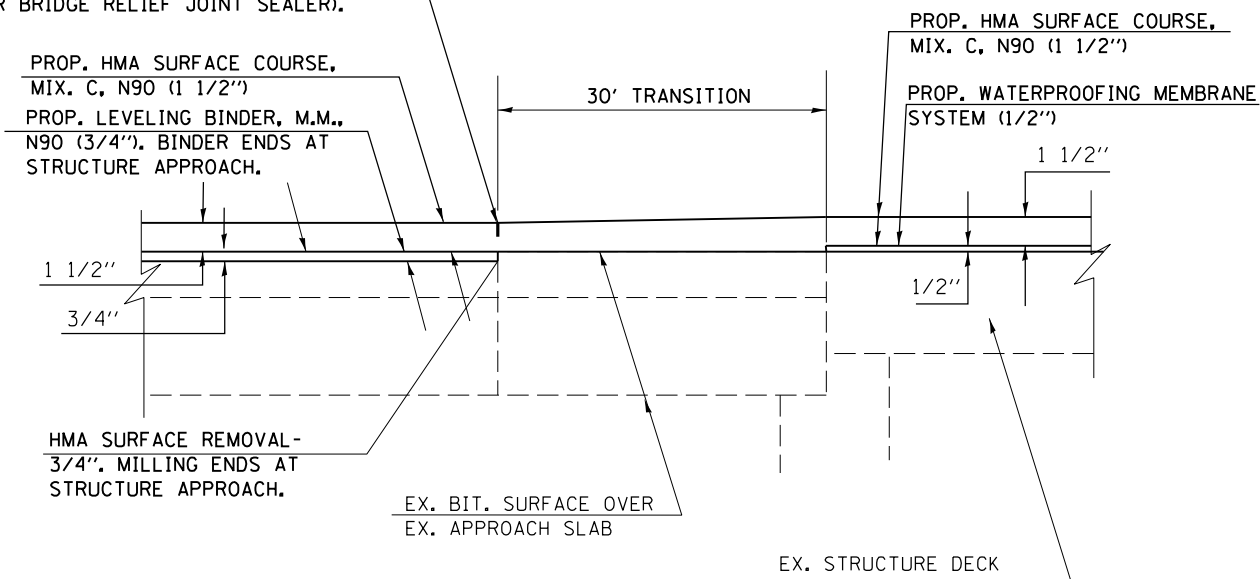
TO BE USED:

- STA. 465+00 TO STA. 470+00 (EX. GUTTER)
- STA. 693+34 TO STA. 701+74 (EX. GUTTER)
- STA. 1311+18 TO STA. 1307+48 (RAILROAD OVERPASS)

NOTE: MILLING THROUGH TRANSITIONS FOR INLAY AT GUTTER SECTIONS IS INCLUDED IN COST FOR HMA SURFACE COURSE REMOVAL 2 1/4".

DETAIL FOR
RESURFACING OVER STRUCTURES
(NO MILLING ON APPROACHES OR STRUCTURES)

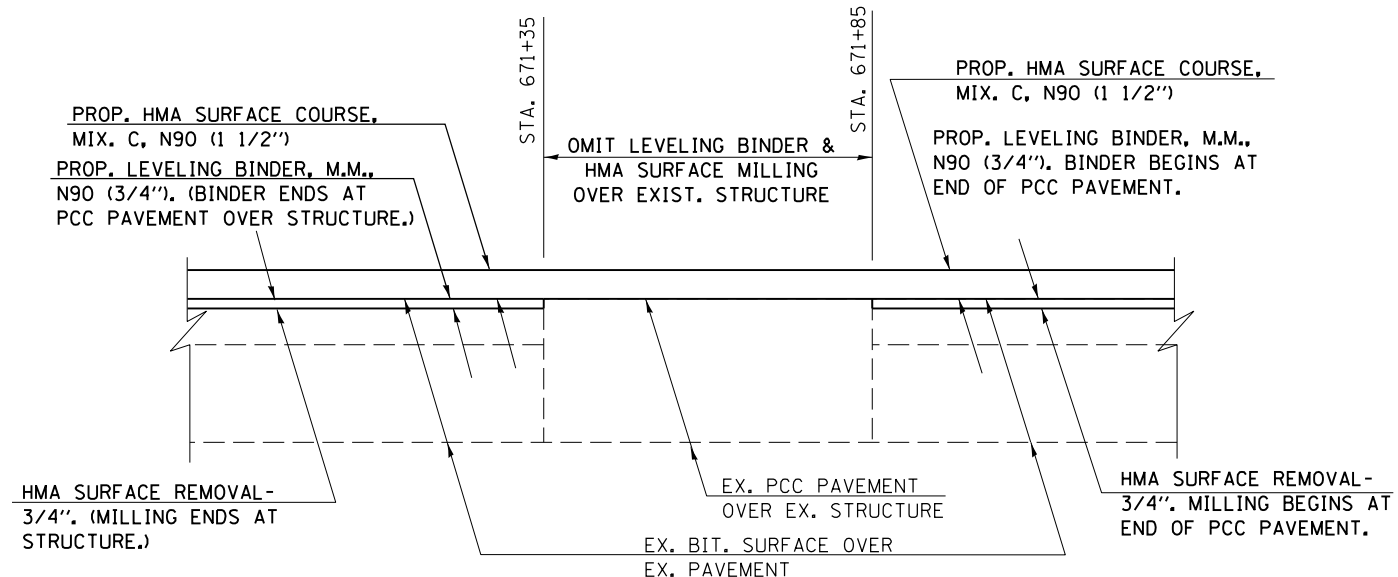
A 3/4" DEEP SAW CUT SHALL BE CUT INTO THE PROP. HMA SURFACE COURSE OVER THE EXIST. PJS AT THE END OF EACH APPROACH SLAB. (SEE BDE SPEC. FOR BRIDGE RELIEF JOINT SEALER).



TO BE USED:

- SN 073-0028
- SN 073-0029
- SN 073-0030

DETAIL FOR
RESURFACING OVER SN 073-7087



FILE NAME =	USER NAME = \$USER\$	DESIGNED -	REVISED -
et:\pw\work\p1dot\mccordkr\ad033289\178351-sht-plen.dgn		DRAWN -	REVISED -
		CHECKED -	REVISED -
		DATE -	REVISED -
\$MODELNAME\$	PLOT DATE = 3/22/2013		

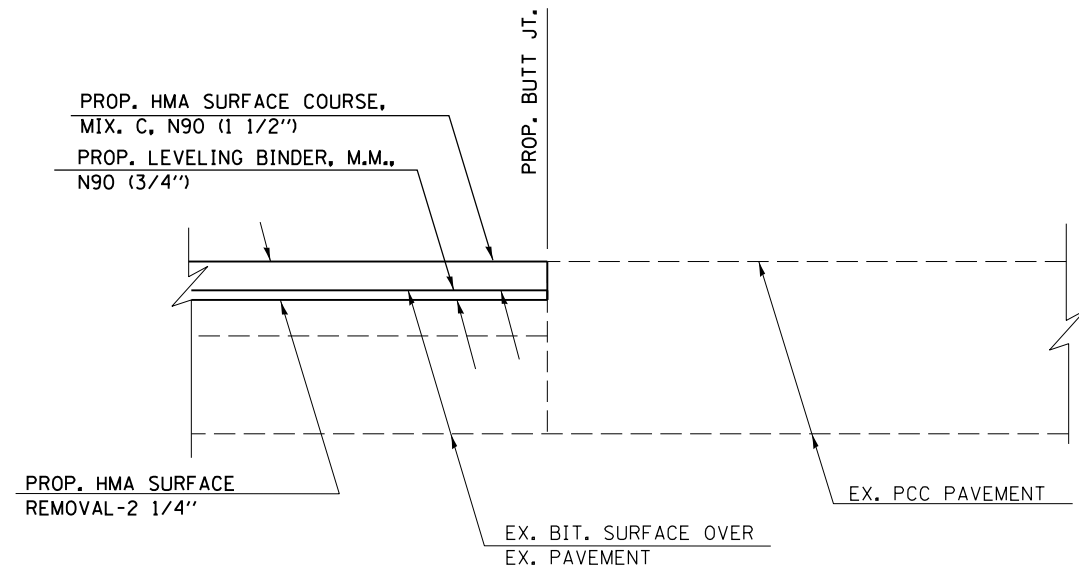
STATE OF ILLINOIS
DEPARTMENT OF TRANSPORTATION

DETAILS - BUTT JOINTS
AND TRANSITIONS

SCALE: SHEET OF SHEETS STA. TO STA.

F.A.P. RTE.	SECTION	COUNTY	TOTAL SHEETS	SHEET NO.
329	(19,18,17,103)RS-4	PERRY	34	27
CONTRACT NO. 78351				
ILLINOIS FED. AID PROJECT				

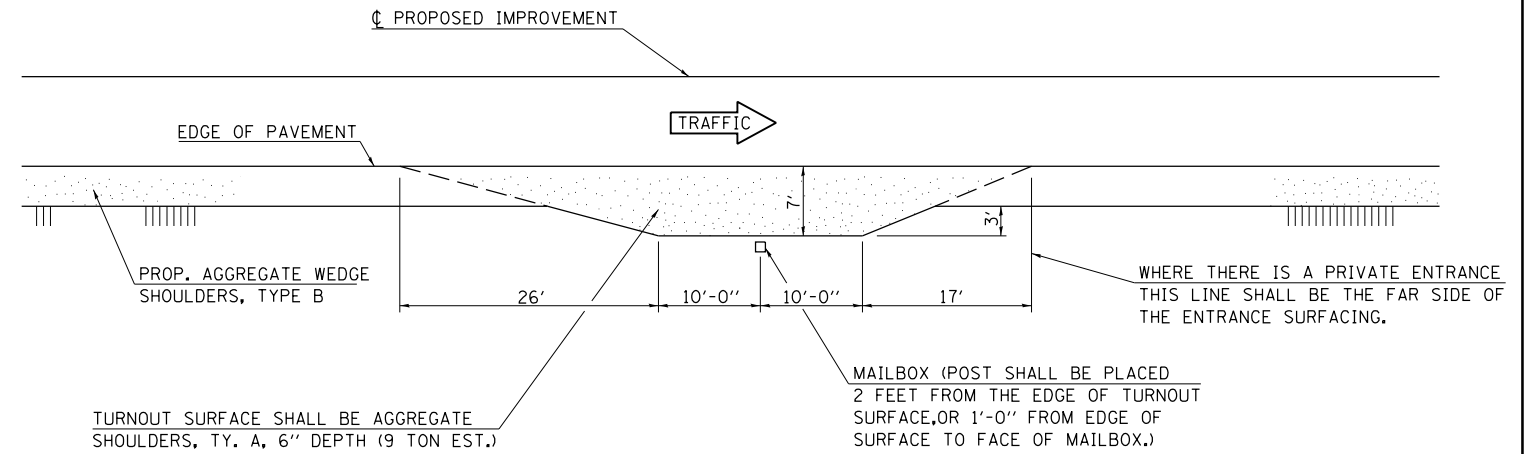
DETAIL FOR
INLAY BUTT JOINTS



TO BE USED:

STA. 1311+18 (AT RR OVERPASS)
STA. 1268+16 (END OF PROJECT)

MAILBOX TURNOUT



NOTE:

WHERE THERE IS MORE THAN ONE MAILBOX IN A GROUP, THE 10 FOOT DIM. SHALL BE MEASURED FROM THE FIRST AND LAST MAILBOX.

REVISIONS	
REDRAWN	2-15-09
REVISED	01-10-07
REVISED	3-26-08
REVISED	

STD. 9-15

FILE NAME =	USER NAME = \$USER\$	DESIGNED -	REVISED -
ct:\pw\work\p1dot\mccordkr\ad033289\178361-sht-plen.dgn		DRAWN -	REVISED -
\$MODELNAME\$	PLOT SCALE = 200.0000' / in.	CHECKED -	REVISED -
	PLOT DATE = 3/22/2013	DATE -	REVISED -

STATE OF ILLINOIS
DEPARTMENT OF TRANSPORTATION

DETAILS - BUTT JOINTS AND MAILBOX TURNOUT			
SCALE:	SHEET	OF SHEETS	STA. TO STA.

F.A.P. RTE.	SECTION	COUNTY	TOTAL SHEETS	SHEET NO.
329	(19,18,17,103)RS-4	PERRY	34	28
				CONTRACT NO. 78351
ILLINOIS FED. AID PROJECT				

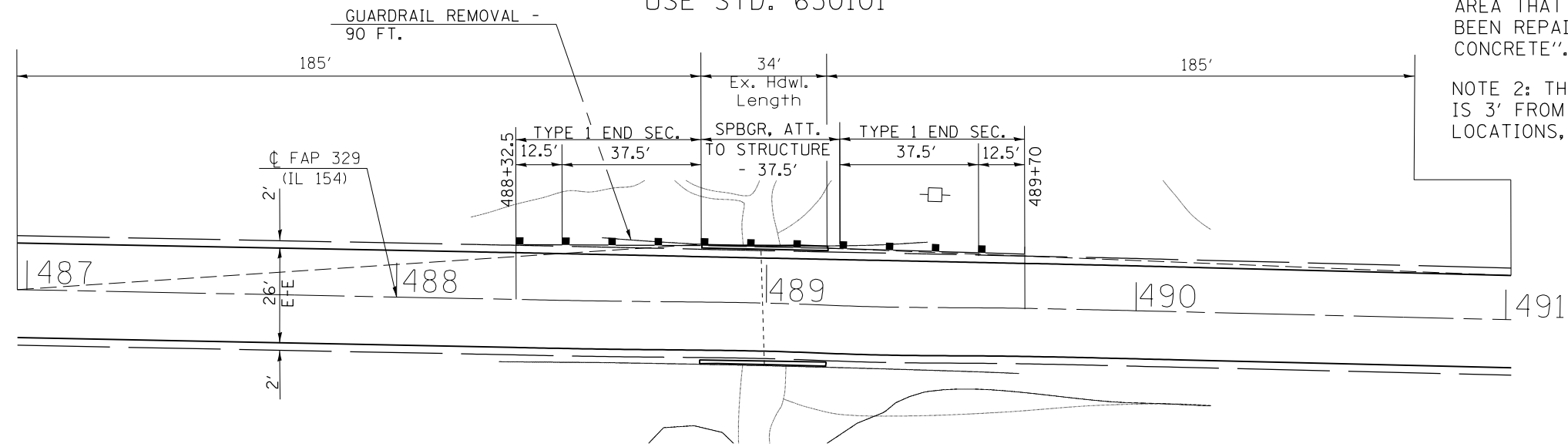


SN 073-7046
 STA. 488+99
 6' X 11' BOX
 USE STD. 630101

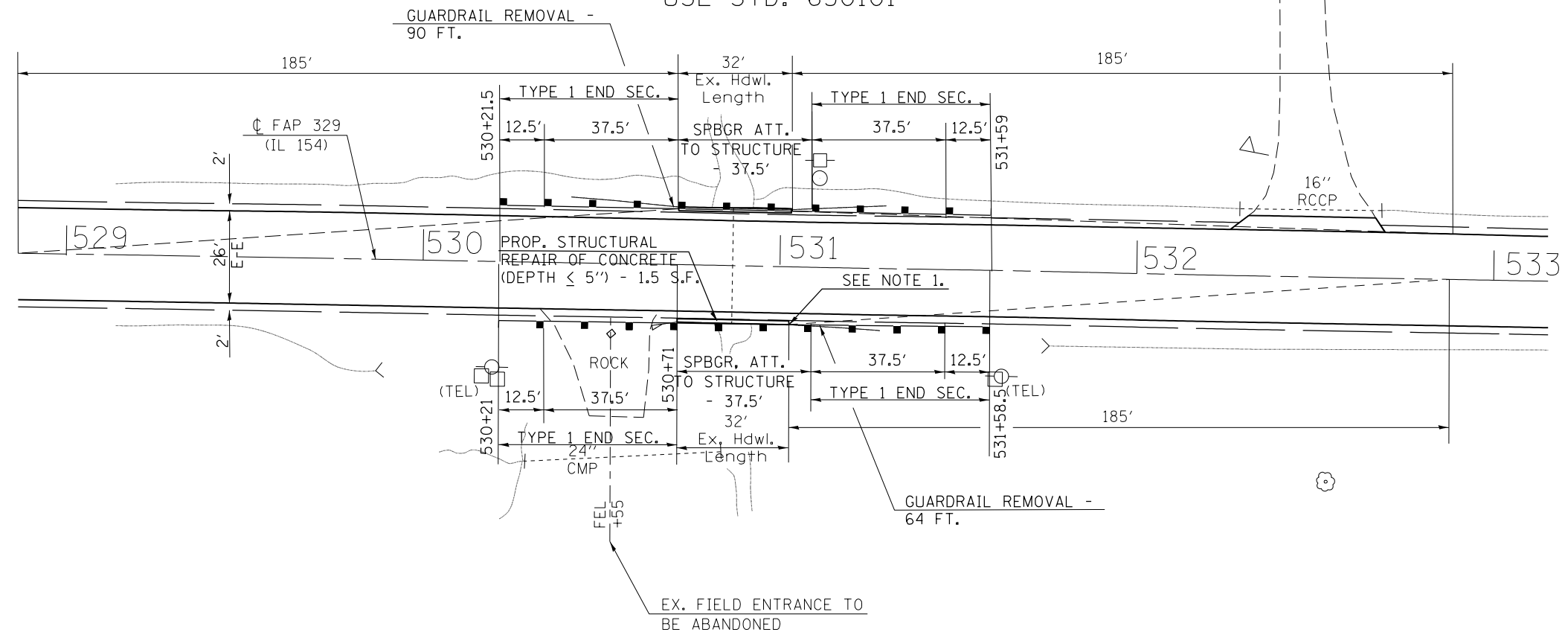
NOTES

NOTE 1: THE CONTRACTOR SHALL AVOID, TO THE GREATEST EXTENT POSSIBLE, ATTACHING NEW GUARDRAIL POSTS TO ANY HEADWALL AREA THAT IS NOT SOUND OR THAT HAS BEEN REPAIRED BY "STRUCTURAL REPAIR OF CONCRETE".

NOTE 2: THE BACK OF THE EXISTING HEADWALL IS 3' FROM THE EDGE OF PAVEMENT ON ALL LOCATIONS, EXCEPT WHERE NOTED.



SN 073-7048
 STA. 530+87
 6.5' X 10' BOX
 USE STD. 630101



FILE NAME =	USER NAME = \$USER\$	DESIGNED -	REVISED -
et:\pw\work\p\dot\mccordkr\ad033289\178351-sht-plan.dgn		DRAWN -	REVISED -
	PLOT SCALE = 40.0000' / in.	CHECKED -	REVISED -
\$MODELNAME\$	PLOT DATE = 3/22/2013	DATE -	REVISED -

STATE OF ILLINOIS
 DEPARTMENT OF TRANSPORTATION

GAURDRAIL DETAILS
 S.N. 073-7046 AND S.N. 073-7048

SCALE: SHEET OF SHEETS STA. TO STA.

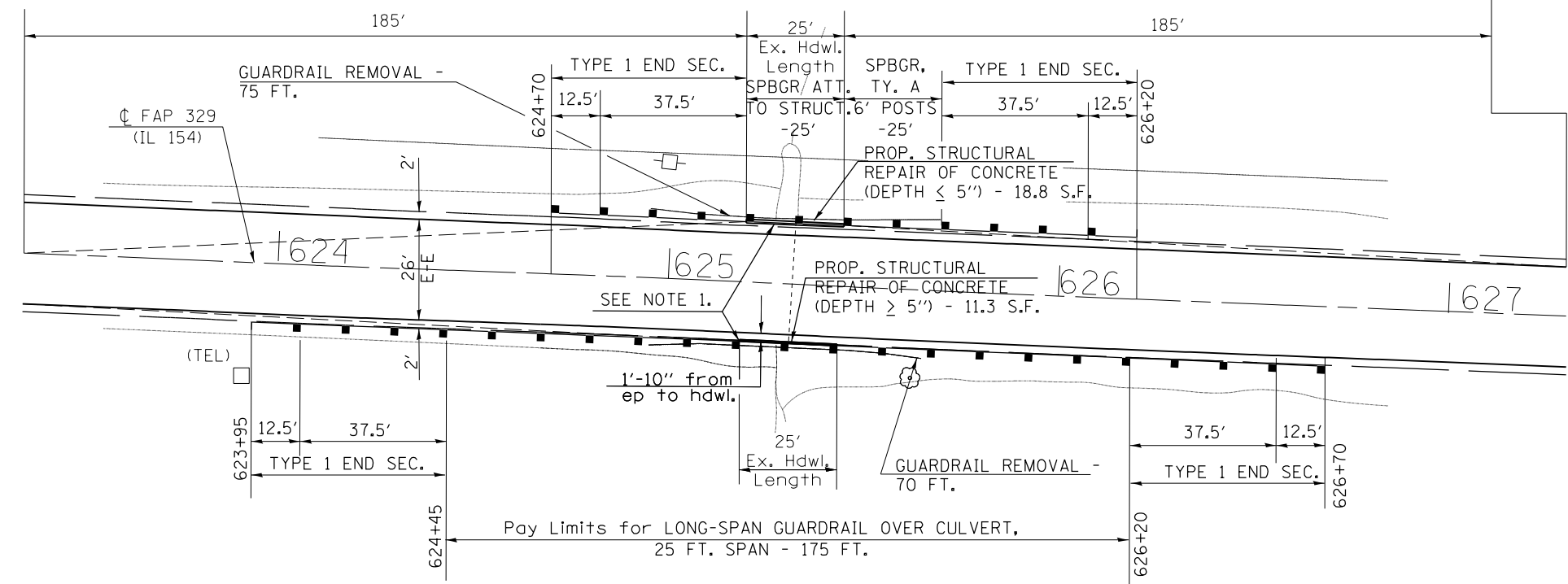
F.A.P. RTE.	SECTION	COUNTY	TOTAL SHEETS	SHEET NO.
329	(19,18,17,103)RS-4	PERRY	34	30
				CONTRACT NO. 78351
ILLINOIS FED. AID PROJECT				



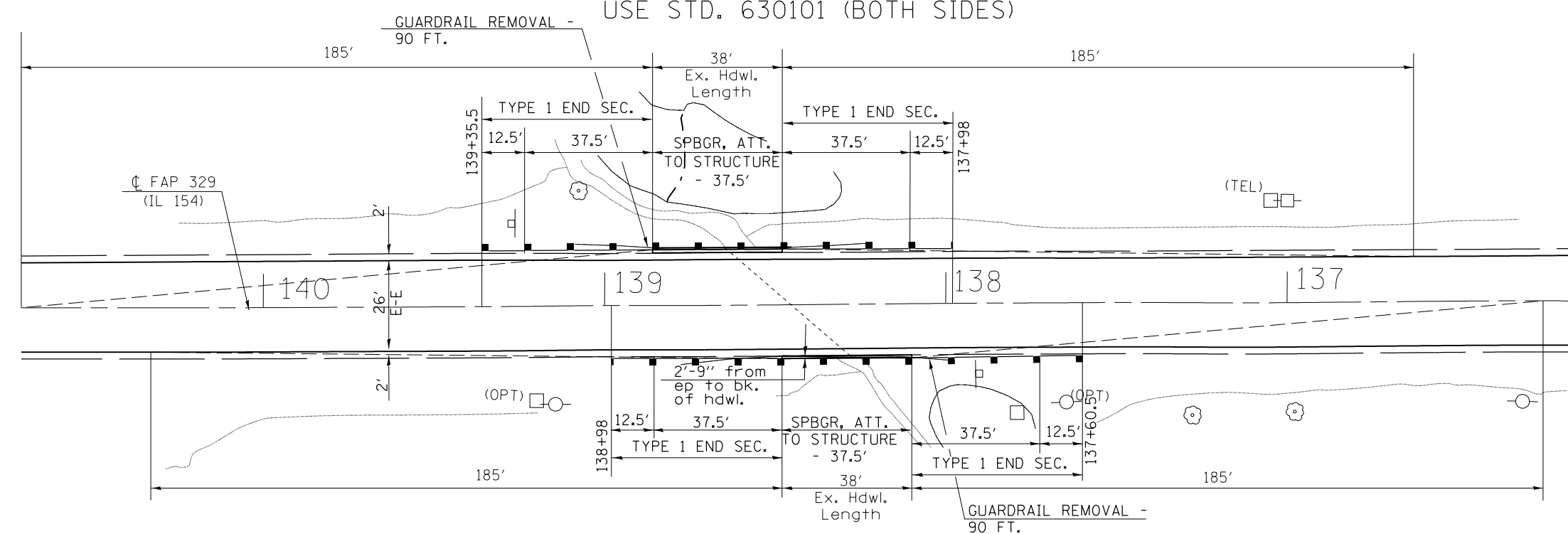
SN 073-7051
 STA. 625+44
 4' X 12' BOX
 USE STD. 630101 (NORTH SIDE)
 USE STD. 630106 (SOUTH SIDE)

NOTES

- NOTE 1: THE CONTRACTOR SHALL AVOID, TO THE GREATEST EXTENT POSSIBLE, ATTACHING NEW GUARDRAIL POSTS TO ANY HEADWALL AREA THAT IS NOT SOUND OR THAT HAS BEEN REPAIRED BY "STRUCTURAL REPAIR OF CONCRETE".
- NOTE 2: THE BACK OF THE EXISTING HEADWALL IS 3' FROM THE EDGE OF PAVEMENT ON ALL LOCATIONS, EXCEPT WHERE NOTED.
- NOTE 3: STATIONING IS DECREASING ON S.N. 073-7055.



SN 073-7055
 STA. 138+71
 7' X 10' BOX
 USE STD. 630101 (BOTH SIDES)



FILE NAME =	USER NAME = \$USER\$	DESIGNED -	REVISED -	STATE OF ILLINOIS DEPARTMENT OF TRANSPORTATION	GUARDRAIL DETAILS S.N. 073-7051 AND S.N. 073-7055	F.A.P. RTE.	SECTION	COUNTY	TOTAL SHEETS	SHEET NO.	
et:\pwork\pwork\mccordkr\ad033289\178351-sht-plan.dgn		DRAWN -	REVISED -			329	(19,18,17,103)RS-4	PERRY	34	31	
\$MODELNAME\$	PLOT SCALE = 40.0000' / in.	CHECKED -	REVISED -			CONTRACT NO. 78351					
	PLOT DATE = 3/22/2013	DATE -	REVISED -			ILLINOIS FED. AID PROJECT					

SN 073-7056

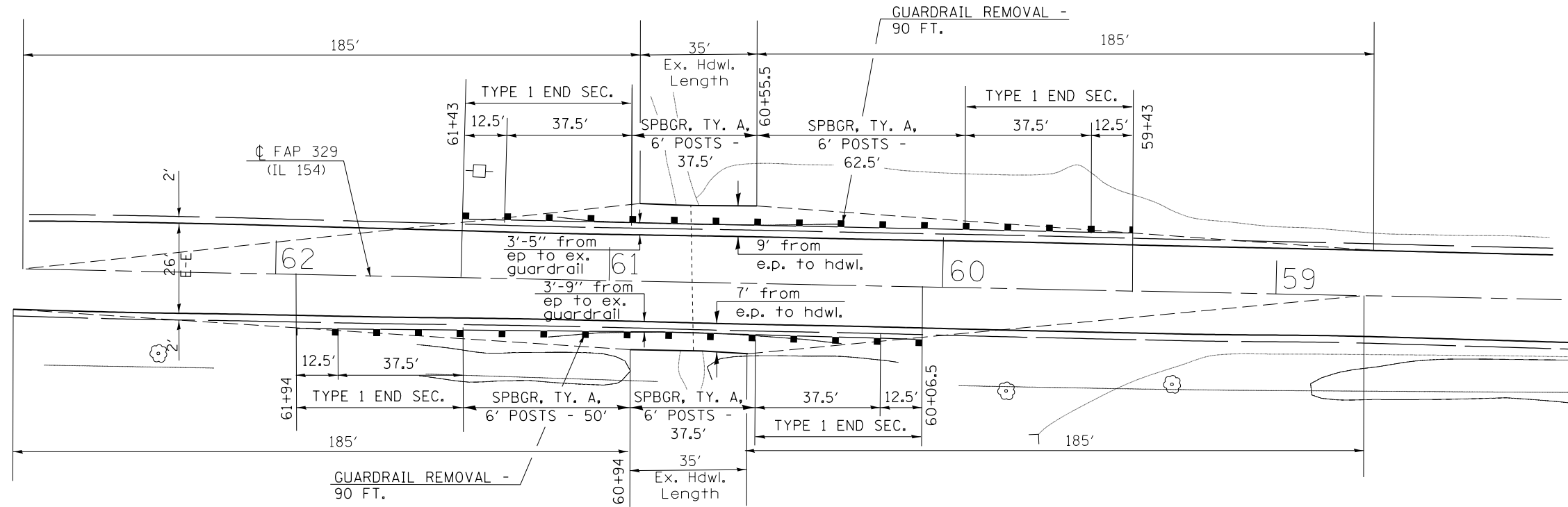
STA. 61+00

8' X 8' BOX

USE STD. 630001 (BOTH SIDES)

NOTES

NOTE 1: STATIONING IS DECREASING ON S.N. 073-7056 AND S.N. 073-7057.

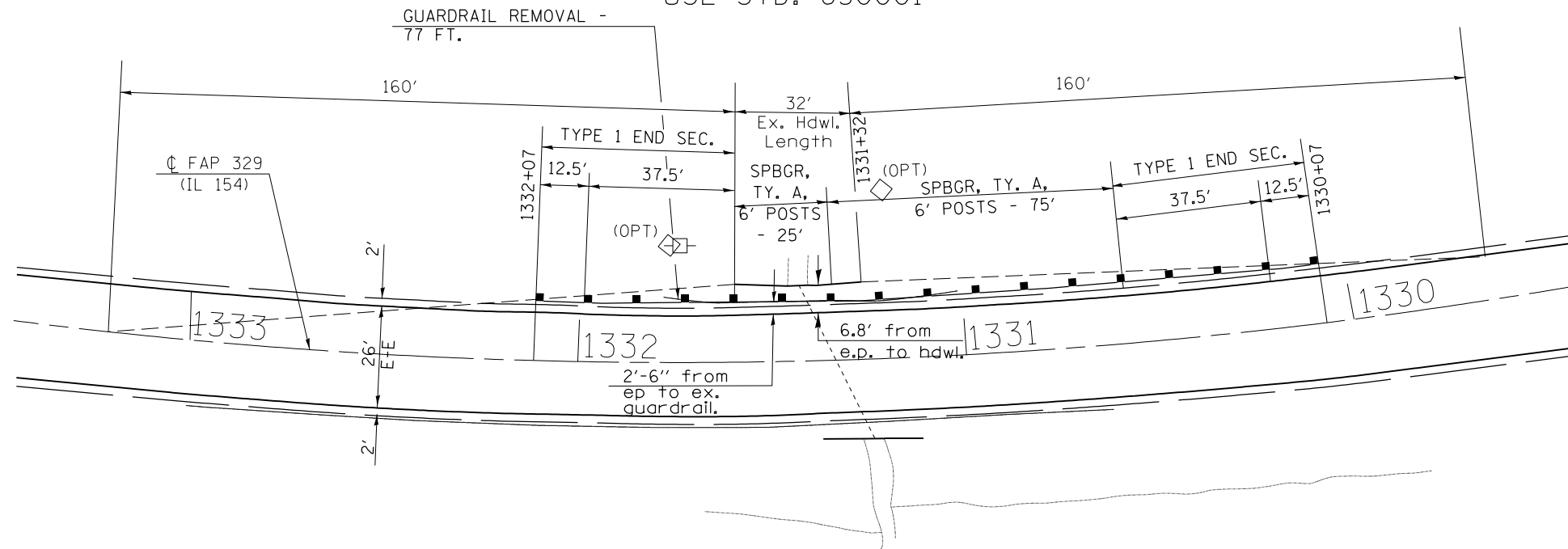


SN 073-7057

STA. 1331+34

7' X 7' BOX

USE STD. 630001



FILE NAME =	USER NAME = \$USER\$	DESIGNED -	REVISED -
ct:\pw\work\p\dot\mccordkr\ad033289\178351-sht-pln.dgn		DRAWN -	REVISED -
\$MODELNAME\$	PLOT SCALE = 40.0000' / in.	CHECKED -	REVISED -
	PLOT DATE = 3/22/2013	DATE -	REVISED -

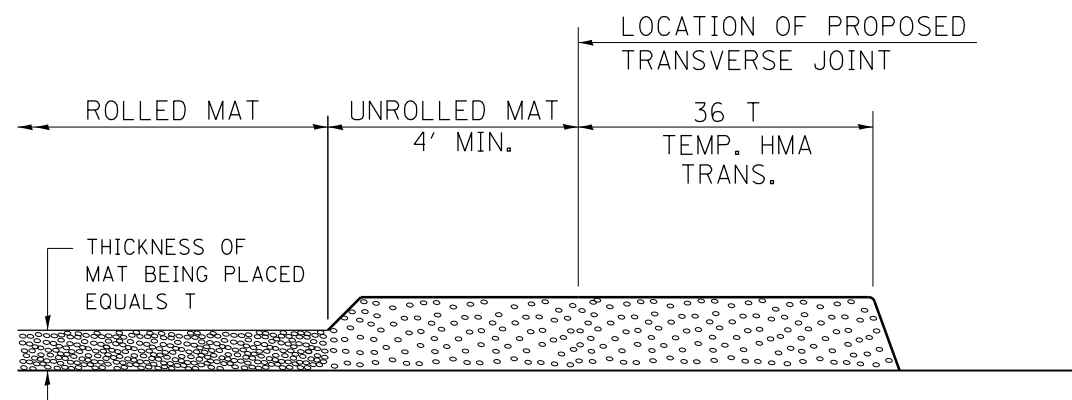
STATE OF ILLINOIS
DEPARTMENT OF TRANSPORTATION

GUARDRAIL DETAILS
S.N. 073-7056 AND S.N. 073-7057

SCALE: SHEET OF SHEETS STA. TO STA.

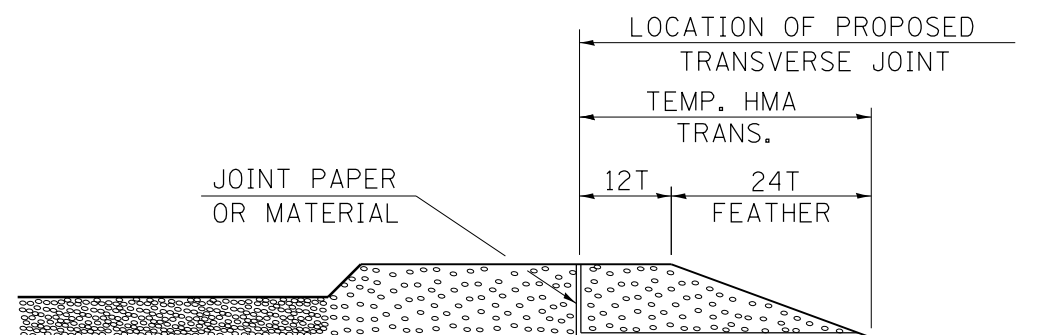
F.A.P. RTE.	SECTION	COUNTY	TOTAL SHEETS	SHEET NO.
329	(19,18,17,103)RS-4	PERRY	34	32
				CONTRACT NO. 78351
ILLINOIS FED. AID PROJECT				

TEMPORARY HOT-MIX ASPHALT TRANSITIONS



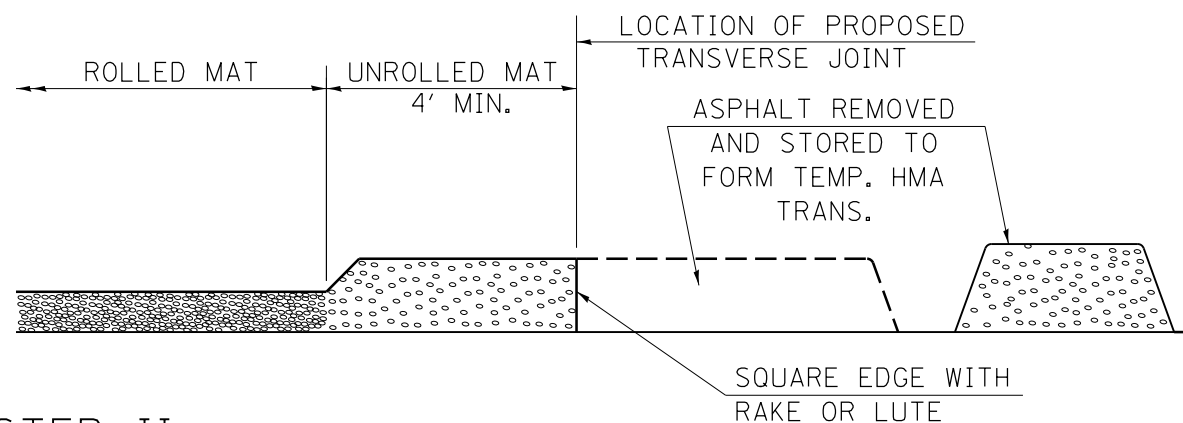
STEP I

1. PLACE HOT-MIX ASPHALT MAT, LENGTH 36 TIMES THE THICKNESS OF THE MAT BEING PLACED PAST THE PROPOSED TRANSVERSE JOINT LOCATION USING NORMAL OPERATING PROCEDURES.
2. EXTREME CARE SHOULD BE TAKEN TO MAINTAIN ENOUGH MATERIAL IN FRONT OF THE SCREED TO MAINTAIN REQUIRED PAVING DEPTH.



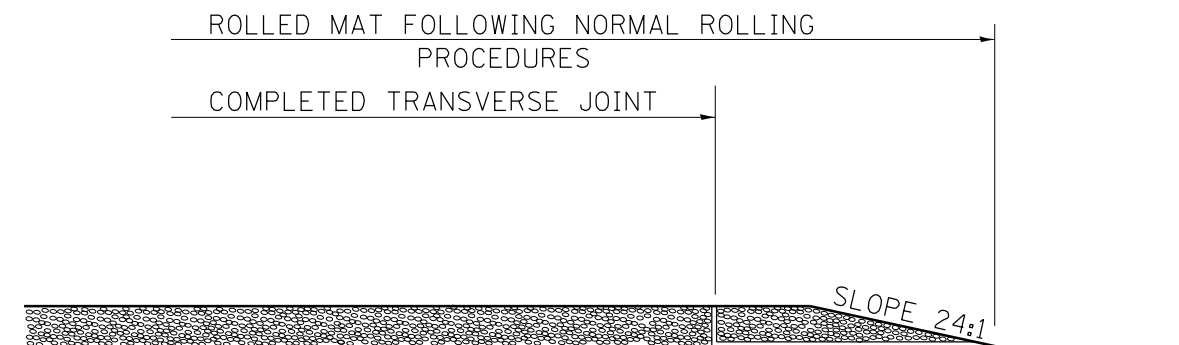
STEP III

1. JOINT PAPER OR OTHER PRESELECTED JOINT MATERIAL IS THEN PLACED IN THE CLEARED AREA AND THE EXCESS ASPHALT USED TO HAND FORM A TRANSITION TO THE DIMENSIONS SHOWN ABOVE.
2. NOTE THAT IN CONSTRUCTING THE TRANSITION, THE MAT DEPTH IS CONTINUED AS PART OF THE TRANSITION BEFORE FORMING THE FEATHER.



STEP II

1. MOVE THE PAVER OUT OF THE WAY AND REMOVE THE ASPHALT FROM THE AREA OF THE PROPOSED TEMPORARY HOT-MIX ASPHALT TRANSITION.
2. SQUARE UP THE END OF THE MAT WITH A RAKE OR LUTE.
3. NOTE THAT THE MAT WITHIN 4' OF THE END OF JOINT IS NOT TO BE ROLLED AT THIS TIME.



STEP IV

1. COMPLETE TEMPORARY TRANSITION BY ROLLING.
2. TO RESUME PAVING, AT THE JOINT, REMOVE TEMPORARY TRANSITION AND DISPOSE OF THE MATERIAL ACCORDING TO ART. 202.03 OF THE STD. SPECS. (COST INCLUDED IN THE CONTRACT).
3. CONSTRUCTING THE TEMPORARY TRANSITIONS WILL NOT BE PAID FOR SEPARATELY IN ACCORDANCE WITH ARTICLE 406.14 OF THE STANDARD SPECIFICATIONS.

REVISIONS	
REDRAWN	2-15-89
REVISED	8-16-94
REVISED	01-09-07
REVISED	

STD. 9-26

FILE NAME =	USER NAME = \$USER\$	DESIGNED -	REVISED -
ct:\pw\work\p1dot\mccordkr\d0332891\78351-sht-pln.dgn		DRAWN -	REVISED -
	PLOT SCALE = 200.0000' / in.	CHECKED -	REVISED -
	PLOT DATE = 3/22/2013	DATE -	REVISED -

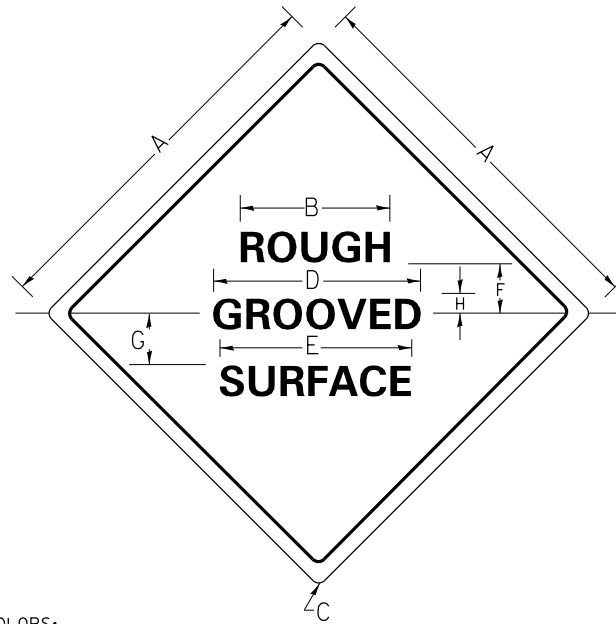
**STATE OF ILLINOIS
DEPARTMENT OF TRANSPORTATION**

**TEMP. HOT-MIX ASPHALT
TRANSITIONS**

SCALE: SHEET NO. OF SHEETS STA. TO STA.

F.A.P. RTE.	SECTION	COUNTY	TOTAL SHEETS	SHEET NO.
329	(19,18,17,103)RS-4	PERRY	34	33
				CONTRACT NO. 78351
ILLINOIS FED. AID PROJECT				

ILLINOIS STANDARD
W8-I106



COLORS:

LEGEND AND BORDER BLACK NON-REFLECTORIZED
BACKGROUND ORANGE REFLECTORIZED

SIGN SIZE	DIMENSIONS							
	A	B	C	D	E	F	G	H
48x48	48.0	24.1	3.0	34.0	33.0	6.0	13.0	3.5

SIGN SIZE	SERIES			MAR-GIN	BOR-DER	BLANK STD.
	LINES					
	1	2	3			
48x48	7C	7C	7C	0.8	1.2	B4-48D

NOTE: PRIOR TO ALLOWING TRAFFIC ON ANY PORTION OF THE ROADWAY THAT HAS BEEN COLDMILLED, THE CONTRACTOR SHALL HAVE ERECTED "ROUGH GROOVED SURFACE" SIGNS THAT CONFORM TO THE ABOVE DETAILS. A MINIMUM OF ONE SIGN AT EACH END OF THE IMPROVEMENT WILL BE REQUIRED. THE CONTRACTOR SHALL MAINTAIN THE "ROUGH GROOVED SURFACE" SIGNS UNTIL THE COLDMILLED SURFACE IS COVERED WITH LEVELING BINDER OR SURFACE COARSE.

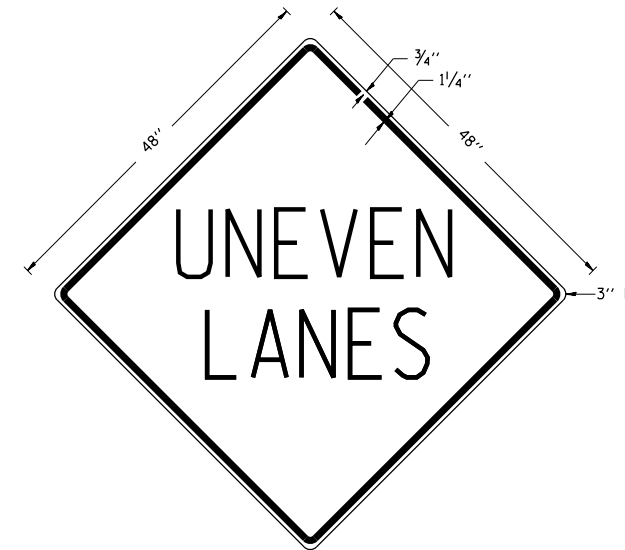
IF AT ANY TIME THE SIGNS ARE IN PLACE BUT NOT APPLICABLE, THEY SHALL BE TURNED FROM THE VIEW OF MOTORISTS OR COVERED AS DIRECTED BY THE ENGINEER.

THE COST OF FURNISHING, ERECTING, MAINTAINING, AND REMOVING THE REQUIRED SIGNS SHALL BE INCLUDED IN THE CONTRACT.

ALL DIMENSIONS ARE IN INCHES UNLESS OTHERWISE NOTED.

REVISIONS
REDRAWN 10-23-01
STD. 9-39

UNEVEN LANES SIGN
W8-11 (48" x 48")



COLORS:

LEGEND AND BORDER - BLACK NON-REFLECTORIZED
BACKGROUND - ORANGE REFLECTORIZED

NOTE: PRIOR TO ALLOWING TRAFFIC ON ANY PORTION OF THE ROADWAY THAT HAS BEEN COLDMILLED OR BEFORE RESURFACING OPERATIONS BEGIN, THE CONTRACTOR SHALL HAVE ERECTED "UNEVEN PAVEMENT" SIGNS THAT CONFORM TO THE ABOVE DETAILS. A MINIMUM OF ONE SIGN AT EACH END OF THE IMPROVEMENT WILL BE REQUIRED. THE CONTRACTOR SHALL MAINTAIN THE "UNEVEN PAVEMENT" SIGNS UNTIL THE RESURFACING OPERATIONS ARE COMPLETED.

IF AT ANY TIME THE SIGNS ARE IN PLACE BUT NOT APPLICABLE, THEY SHALL BE TURNED FROM THE VIEW OF MOTORISTS OR COVERED AS DIRECTED BY THE ENGINEER.

THE COST OF FURNISHING, ERECTING, MAINTAINING, AND REMOVING THE REQUIRED SIGNS SHALL BE INCLUDED IN THE CONTRACT.

REVISIONS
DRAWN 2-15-89
REVISED 4-6-93
REDRAWN 7-23-04
REVISED

STD. 9-41

FILE NAME =	USER NAME = \$USER\$	DESIGNED -	REVISED -	STATE OF ILLINOIS DEPARTMENT OF TRANSPORTATION	DETAIL: UNEVEN LANES SIGN ; ROUGH GROOVED SURFACE SIGN	F.A.P. RTE.	SECTION	COUNTY	TOTAL SHEETS	SHEET NO.
et:\pw\work\p\dot\mccordkr\d0332891\78351-sht-plen.dgn		DRAWN -	REVISED -			329	(19,18,17,103)RS-4	PERRY	34	34
PLOT SCALE = 200.0000' / in.		CHECKED -	REVISED -			CONTRACT NO. 78351				
PLOT DATE = 3/22/2013		DATE -	REVISED -			ILLINOIS FED. AID PROJECT				
SCALE:						SHEET NO. OF SHEETS		STA. TO STA.		