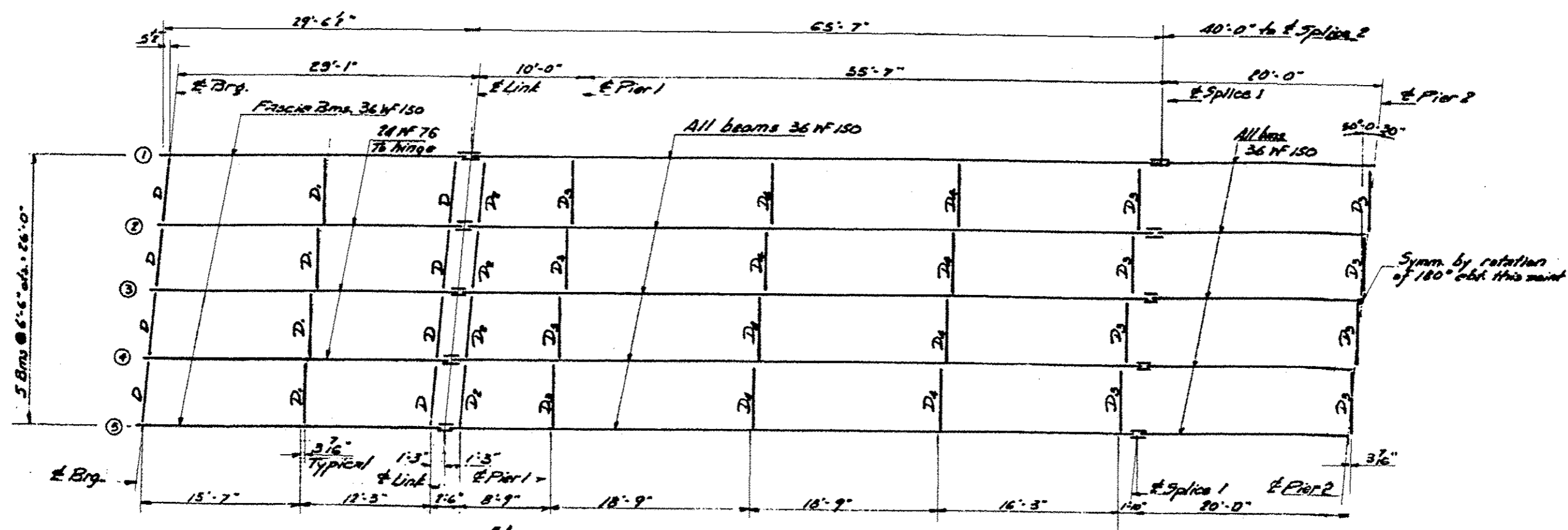


NEAR & SPANS NEAR PIERS
TYPICAL CROSS SECTION



HALF LAYOUT OF STRUCTURAL STEEL

FOR INFORMATION ONLY

| | | | | | | | | | | | |
|--|-----------------------------------|------------|----------|---|--------------------------------------|---|------------------------|---------------------------|--------------|-----------|--|
| FILE NAME = | USER NAME = gautneyrk | DESIGNED - | REVISD - | STATE OF ILLINOIS DEPARTMENT OF TRANSPORTATION | SN 100-0053 STIRITZ RD. OVER I-57 | FAI | SECTION | COUNTY | TOTAL SHEETS | SHEET NO. | |
| o:\work\p\p\dot\gautneyrk\10319066\7841-eh\tr\plan.dgn | PLOT SCALE = 48.0000' / 1" / 1/4" | DRAWN - | REVISD - | | | 57 | D9 BRIDGE PAINT 2013-1 | | 23 | 20. | |
| #MODELNAME# | PLOT DATE = 3/11/2013 | CHECKED - | REVISD - | | | CONTRACT NO. 78355 | | ILLINOIS FED. AID PROJECT | | | |
| | | DATE - | REVISD - | | | SCALE: _____ SHEET _____ OF _____ SHEETS STA. _____ TO STA. _____ | | | | | |