

# PROPOSED HIGHWAY PLANS

FAI 57 (I-57)  
SECTION D9 BRIDGE PAINT 2013-1

BRIDGE PAINTING  
FRANKLIN & WILLIAMSON COUNTIES  
C-99-025-13

F.A.I. RTE.	SECTION	COUNTY	TOTAL SHEETS	SHEET NO.
57	D9 BRIDGE PAINT 2013-1		23	1
			CONTRACT NO. 78355	
• FRANKLIN, WILLIAMSON				

FOR INDEX OF SHEETS, SEE SHEET NO. 2  
FOR SUMMARY OF QUANTITIES, SEE SHEETS NO. 3 AND NO. 4

**BRIDGE NO. 1**  
SN. 028-0058  
FAU 9496 2009 ADT=800, 4% TRUCKS  
FAI 57 (I-57) 2009 ADT=33200, 22% TRUCKS  
INVENTORY RATING: 14.4  
OPERATING RATING: 22.2  
DENNING TOWNSHIP

**BRIDGE NO. 2**  
SN. 028-0059  
FAP 845 (IL 154) 2011 ADT=3150, 11% TRUCKS  
FAI 57 (I-57) 2011 ADT=27500, 25% TRUCKS  
INVENTORY RATING: 30.1  
OPERATING RATING: 50.1  
EWING TOWNSHIP

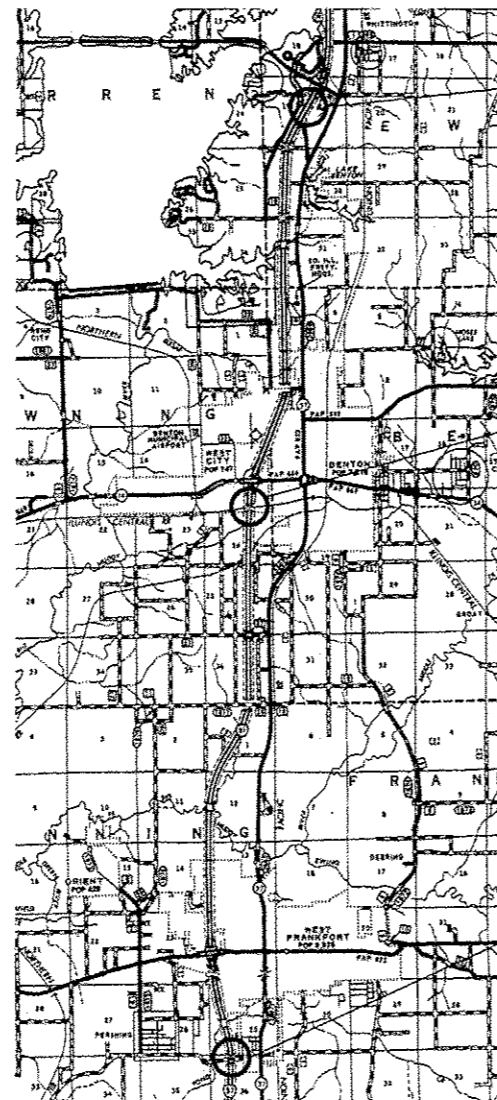
**BRIDGE NO. 3**  
SN. 028-0063  
FAU 9448  
(WEBSTER ST.) 2900 ADT=1400, 5% TRUCKS  
FAI 57 (I-57) 2012 ADT=32000, 26% TRUCKS  
INVENTORY RATING: 15.0  
OPERATING RATING: 25.0  
BROWNING TOWNSHIP

**BRIDGE NO. 4**  
SN. 100-0053  
TR 23 (STIRITZ RD.) 2011 ADT=900, 3% TRUCKS  
FAI 57 (I-57) 2012 ADT=33200, 21% TRUCKS  
INVENTORY RATING: 16.5  
OPERATING RATING: 27.5  
COUNTY UNIT ROAD DISTRICT

J.U.L.I.E.  
JOINT UTILITY LOCATION INFORMATION FOR EXCAVATION  
1-800-892-0123  
OR 811

PROJECT ENGINEER David Piche  
DESIGNER Rita Gautney

CONTRACT NO. 78355



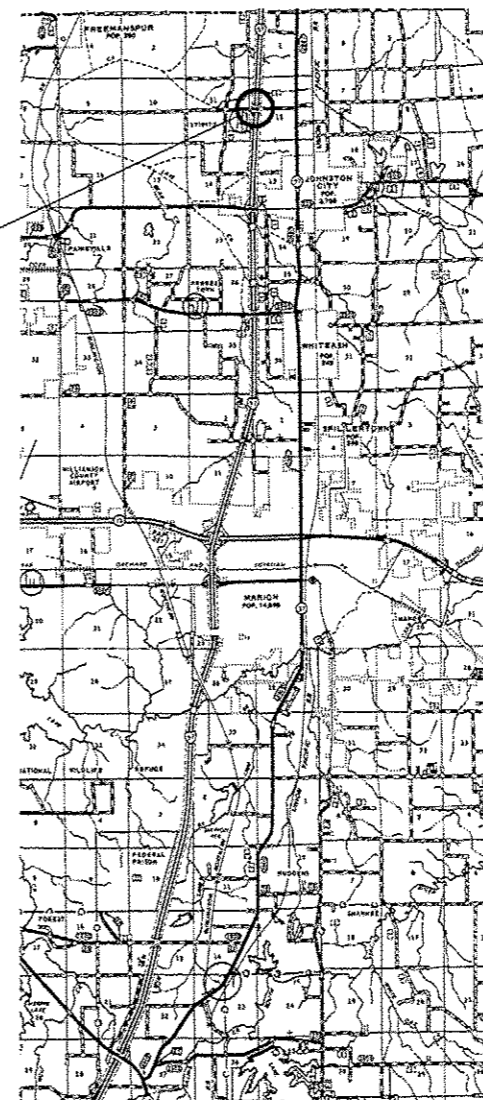
FRANKLIN COUNTY

BRIDGE NO. 2  
STRUCTURE NO. 028-0059  
IL 154 OVER I-57  
MILEPOST 80

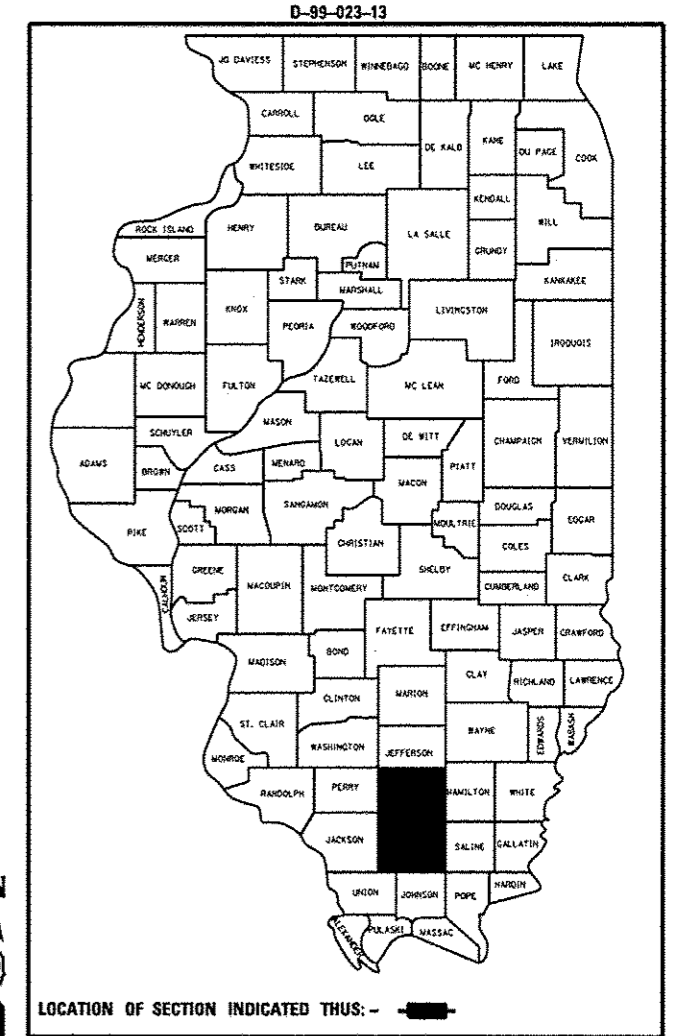
BRIDGE NO. 4  
STRUCTURE NO. 100-0053  
TR 23 (STIRITZ RD) OVER I-57  
MILEPOST 61

BRIDGE NO. 3  
STRUCTURE NO. 028-0063  
WEBSTER STREET OVER I-57  
MILEPOST 71

BRIDGE NO. 1  
STRUCTURE NO. 028-0058  
FAU 9496 OVER I-57  
MILEPOST 63



WILLIAMSON COUNTY



STATE OF ILLINOIS  
DEPARTMENT OF TRANSPORTATION  
DIVISION OF HIGHWAYS

SUBMITTED 3/29 2013

*Andrew J. Kurn*  
DEPUTY DIRECTOR OF HIGHWAYS, REGION ENGINEER

April 26 2013  
*John D. Baranzelli, P.E.*  
ENGINEER OF DESIGN AND ENVIRONMENT

April 26 2013  
*Omer Osman, P.E.*  
DIRECTOR OF HIGHWAYS, CHIEF ENGINEER

PRINTED BY THE AUTHORITY  
OF THE STATE OF ILLINOIS

**GENERAL NOTES**

EXTRA TRAFFIC CONTROL DEVICES MAY BE REQUIRED TO CHANNEL TRAFFIC AT COMMERCIAL AND/OR PRIVATE ENTRANCES AS DIRECTED BY THE ENGINEER. ALL TRAFFIC CONTROL DEVICES ARE INCLUDED IN THE COST OF THE TRAFFIC CONTROL AND PROTECTION STANDARD USED AT THE SITE, AND WILL NOT BE PAID FOR SEPARATELY.

THE EXISTING STEEL COATINGS CONTAIN LEAD. THE CONTRACTOR SHOULD TAKE APPROPRIATE PRECAUTIONS TO DEAL WITH THE PRESENCE OF LEAD ON THIS PROJECT.

THE CONTRACTOR IS REQUIRED TO BE SSPC OPI AND SSPC OP2 CERTIFIED.

PLAN DIMENSIONS AND DETAILS RELATIVE TO EXISTING PLANS ARE SUBJECT TO ROUTINE VARIATIONS. THE CONTRACTOR SHALL FIELD VERIFY EXISTING DIMENSIONS AND DETAILS AFFECTING NEW CONSTRUCTION AND MAKE NECESSARY APPROVED ADJUSTMENTS PRIOR TO CONSTRUCTION OR ORDERING OF MATERIALS. SUCH VARIATIONS SHALL NOT BE CAUSE FOR ADDITIONAL COMPENSATION FOR A CHANGE IN SCOPE OF THE WORK, HOWEVER, THE CONTRACTOR WILL BE PAID FOR THE QUANTITY ACTUALLY FURNISHED AT THE UNIT PRICE BID FOR THE WORK.

TRAFFIC CONTROL SIGNS SHALL BE PLACED SO THAT THEY DO NOT INTERFERE WITH EXISTING SIGNS OR FLASHING BEACONS. THE DIMENSIONS BETWEEN SIGNS MAY BE MODIFIED SLIGHTLY SO AS TO AVOID CONFLICTS WITH EXISTING SIDE ROADS, COMMERCIAL ENTRANCES, AND PRIVATE ENTRANCES. THE BUREAU OF OPERATIONS SHOULD APPROVE FINAL PLACEMENT OF TRAFFIC CONTROL SIGNING.

IN ADDITION TO THE REQUIREMENTS OF ARTICLE 107.16 THE CONTRACTOR SHALL PROTECT THE SURFACE OF ALL BRIDGE DECKS AND BRIDGE APPROACH PAVEMENTS IN A MANNER SATISFACTORY TO THE ENGINEER BEFORE ANY EQUIPMENT IS ALLOWED TO CROSS THE STRUCTURE. PROTECTION SHALL BE PROVIDED FOR ALL EQUIPMENT AS DEFINED IN ARTICLE 101.16 REGARDLESS IF TRACK MOUNTED OR WHEELED.

THE QUANTITY FOR RELOCATE PORTABLE TEMPORARY BARRIER SYSTEM IS BASED ON RELOCATING THE BARRIER THREE TIMES AT EACH STRUCTURE. ANY PAYMENT FOR ADDITIONAL RELOCATION WILL BE MADE ACCORDING TO ARTICLE 104.02 OF THE STANDARD SPECIFICATIONS.

CLEANING AND PAINTING OF ALL EXISTING STRUCTURAL STEEL ON ALL BRIDGES AND DESIGNATED PORTION OF HANDRAIL ON BRIDGE NO. 4 SHALL BE AS SPECIFIED IN THE SPECIAL PROVISIONS FOR "CLEANING AND PAINTING EXISTING STEEL STRUCTURES" AND "CONTAINMENT AND DISPOSAL OF LEAD PAINT CLEANING RESIDUES". ALL EXISTING STRUCTURAL STEEL AND DESIGNATED HANDRAIL SHALL BE CLEANED PER NEAR WHITE BLAST CLEANING - SSPC-SP10 AND PAINTED ACCORDING TO THE REQUIREMENTS OF PAINT SYSTEM 1 - OZ/E/U. THE COLOR OF THE FINAL FINISH COAT FOR ALL INTERIOR STEEL SURFACES AND HANDRAIL SHALL BE GRAY, MUNSELL NO. 5B 7/1. THE COLOR OF THE FINAL FINISH COAT FOR THE EXTERIOR SURFACES AND BOTTOM OF THE BOTTOM FLANGE OF THE FASCIA BEAMS SHALL BE REDDISH BROWN, MUNSELL NO. 2.5YR 7/4.

FOUR AIR MONITORS ARE REQUIRED TO MONITOR ABRASIVE BLASTING OPERATIONS AT BRIDGE NO. 3 (SN 028-0063) ACCORDING TO SPECIAL PROVISION "CONTAINMENT AND DISPOSAL OF LEAD PAINT CLEANING RESIDUES".

TWO AIR MONITORS ARE REQUIRED TO MONITOR ABRASIVE BLASTING OPERATIONS AT BRIDGE NO. 4 (SN 100-0053) ACCORDING TO SPECIAL PROVISION "CONTAINMENT AND DISPOSAL OF LEAD PAINT CLEANING RESIDUES".

A PORTION OF THE BRIDGE HANDRAIL MEASURED AS APPROXIMATELY 50' IN LENGTH SHALL BE CLEANED AND PAINTED ON BRIDGE NO. 4 (SN 100-0053). THE EXACT LOCATION AND LENGTH WILL BE DETERMINED BY THE ENGINEER IN THE FIELD.

**INDEX OF SHEETS**

**SHEET NO.**

**DESCRIPTION**

1	COVER SHEET
2	INDEX OF SHEETS, STANDARDS, SIGNATURES, GENERAL NOTES
3, 4	SUMMARY OF QUANTITIES
5	PARTIAL ENTRANCE RAMP CLOSURE DETAIL
6	DETAIL OF TRAFFIC CONTROL AT ENTRANCE RAMP OUTSIDE WORK AREA, PORTABLE TEMPORARY BARRIER SYSTEM
7-9	SN 028-0058 STRUCTURE INFORMATION
10-14	SN 028-0059 STRUCTURE INFORMATION
15-18	SN 028-0063 STRUCTURE INFORMATION
19-23	SN 100-0053 STRUCTURE INFORMATION

**STANDARDS**

701101-03	OFF-ROAD, MULTI-LANE > 2' & < 15' FROM EOP
701201-04	LANE CLOSURE, 2L, 2W, DAY-ONLY
701400-06	APPROACH TO LANE CLOSURE, FREEWAY/EXPRESSWAY
701402-09	LANE CLOSURE, FREEWAY/EXPRESSWAY WITH BARRIER
701406-06	LANE CLOSURE, FREEWAY/EXPRESSWAY, DAY ONLY
701411-08	LANE CLOSURE, MULTILANE, AT ENTRANCE OR EXIT RAMP, FOR SPEEDS > 45 MPH
701456-02	PARTIAL EXIT RAMP CLOSURE, FREEWAY/EXPRESSWAY
701901-02	TRAFFIC CONTROL DEVICES

Prepared By:	<i>Joe Blawie</i> DISTRICT STUDIES & PLANS ENGINEER
Examined By:	<i>John S.</i> DISTRICT LAND ACQUISITION ENGINEER
Examined By:	<i>Sam</i> DISTRICT PROGRAM DEVELOPMENT ENGINEER
Examined By:	<i>Keel</i> DISTRICT OPERATIONS ENGINEER
Examined By:	<i>K.R.</i> DISTRICT PROJECT IMPLEMENTATION ENGINEER
Examined By:	<i>Daryl J. Mullin</i> DISTRICT CONSTRUCTION ENGINEER
Examined By:	<i>Bruce</i> DISTRICT MATERIALS ENGINEER

FILE NAME *	USER NAME * gautneyrk	DESIGNED -	REVISED -	COMMITMENTS: NONE AS OF MARCH 22, 2013	INDEX OF SHEETS, STANDARDS, GENERAL NOTES	SCALE: _____ SHEET _____ OF _____ SHEETS STA. _____ TO STA. _____	F.A.I. RTE. 57	SECTION 09 BRIDGE PAINT 2013-1	COUNTY	TOTAL SHEETS 23	SHEET NO. 2
a:\pwork\pwork\gautneyrk\d0319666\7841-shs-plan.dgn	DRAWN -	REVISED -	STATE OF ILLINOIS								
MODELNAME#	DATE -	REVISED -	DEPARTMENT OF TRANSPORTATION								

• FRANKLIN & WILLIAMSON

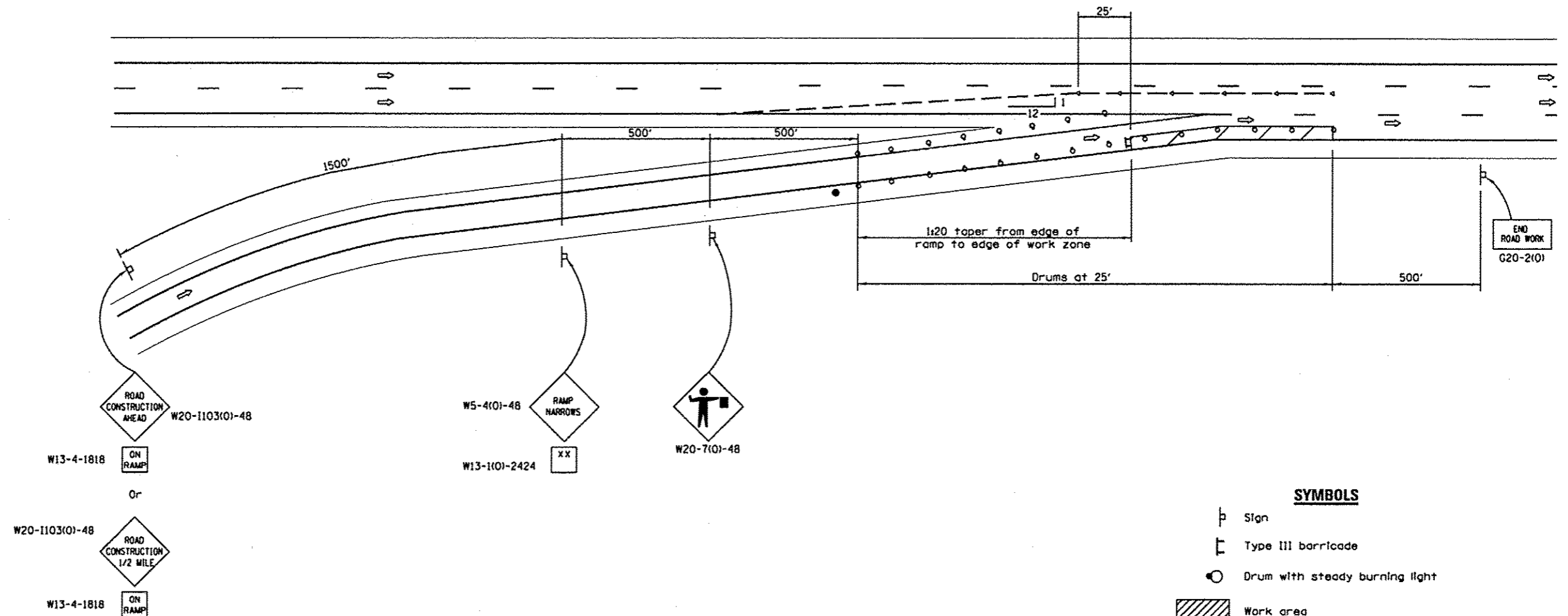
ILLINOIS FED. AID PROJECT

**SUMMARY OF QUANTITIES**  
**(SHEET 1 OF 2)**

CONSTRUCTION TYPE:	0014			
FUNDING:	100% STATE			
RURAL/URBAN:	URBAN	RURAL	URBAN	RURAL
ROUTE:	I-57			
COUNTY:	FRANKLIN	FRANKLIN	FRANKLIN	WILLIAMSON
	BRIDGE NO. 1	BRIDGE NO. 2	BRIDGE NO. 3	BRIDGE NO. 4
	028-0058	028-0059	028-0063	100-0053

CODE NO.	PAY ITEM DESCRIPTION	UNIT	TOTAL QUANTITY	FRANKLIN	FRANKLIN	FRANKLIN	WILLIAMSON
				BRIDGE NO. 1	BRIDGE NO. 2	BRIDGE NO. 3	BRIDGE NO. 4
				028-0058	028-0059	028-0063	100-0053
67000400	ENGINEER'S FIELD OFFICE, TYPE A	CAL MO	5	1	1	2	1
67100100	MOBILIZATION	L SUM	1	0.25	0.25	0.25	0.25
70100207	TRAFFIC CONTROL AND PROTECTION, STANDARD 701402	EACH	4	1	1	1	1
70100420	TRAFFIC CONTROL AND PROTECTION, STANDARD 701411	EACH	4		2	2	
70100450	TRAFFIC CONTROL AND PROTECTION, STANDARD 701201	L SUM	1	0.25	0.25	0.25	0.25
70100700	TRAFFIC CONTROL AND PROTECTION, STANDARD 701406	L SUM	1	0.25	0.25	0.25	0.25
70100825	TRAFFIC CONTROL AND PROTECTION, STANDARD 701456	L SUM	1			1	
70106800	CHANGEABLE MESSAGE SIGN	CAL MO	12	3	3	3	3
Z0007101	CONTAINMENT AND DISPOSAL OF LEAD PAINT CLEANING RESIDUES NO. 1	L SUM	1	1			
Z0007102	CONTAINMENT AND DISPOSAL OF LEAD PAINT CLEANING RESIDUES NO. 2	L SUM	1		1		
Z0007103	CONTAINMENT AND DISPOSAL OF LEAD PAINT CLEANING RESIDUES NO. 3	L SUM	1			1	
Z0007104	CONTAINMENT AND DISPOSAL OF LEAD PAINT CLEANING RESIDUES NO. 4	L SUM	1				1
Z0010501	CLEANING AND PAINTING STEEL BRIDGE NO. 1	L SUM	1	1			





W13-4-1818 W20-1103(O)-48

Or

W20-1103(O)-48

W13-4-1818

W5-4(O)-48

W13-1(O)-2424

W20-7(O)-48

TRAFFIC CONTROL AND PROTECTION STANDARDS 701400 AND 701402 MUST BE USED IN CONJUNCTION WITH THIS PARTIAL RAMP CLOSURE DETAIL. SEE STANDARDS FOR DETAILS AND INFORMATION NOT SHOWN.

SEE SHEET 6 OF 23 FOR DETAIL OF TRAFFIC CONTROL AT ENTRANCE RAMPS WHERE RAMPS ARE OUTSIDE THE WORK AREA.

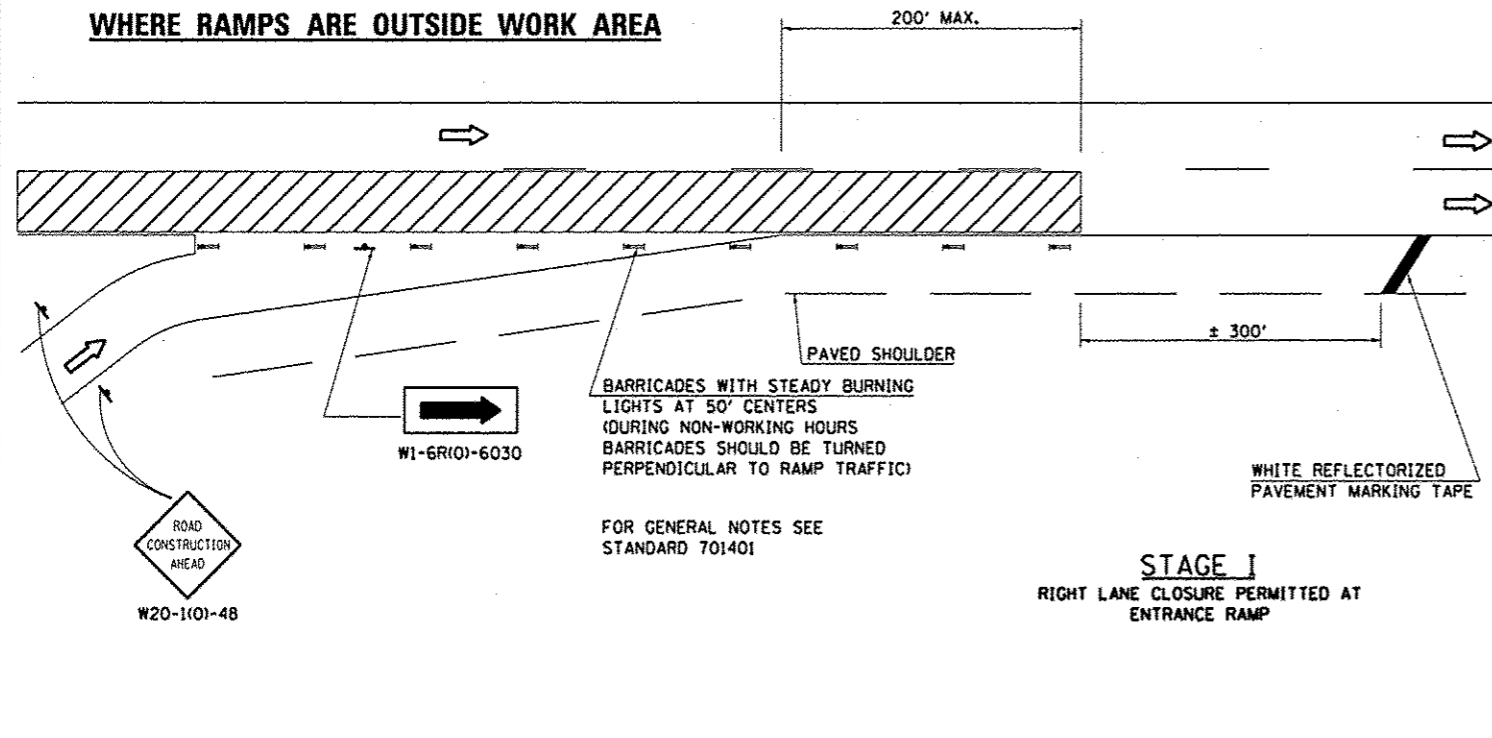
- SYMBOLS**
- Sign
  - Type III barricade
  - Drum with steady burning light
  - Work area
  - Flagger with traffic control sign
  - Portable Temporary Barrier System
  - Monodirectional barrier wall/guardrail marker

**PARTIAL ENTRANCE RAMP CLOSURE  
FREEWAY /EXPRESSWAY**

FILE NAME * c:\pwork\pwork\gautneyrk\d0319666\78		USER NAME * gautneyrk *j-shrplan.dgn	DESIGNED - _____ DRAWN - _____ CHECKED - _____ DATE - _____	REVISED - _____ REVISED - _____ REVISED - _____ REVISED - _____	<b>STATE OF ILLINOIS DEPARTMENT OF TRANSPORTATION</b>	<b>PARTIAL ENTRANCE RAMP CLOSURE FREEWAY /EXPRESSWAY</b>		F.A.I. RTE. 57	SECTION 09 BRIDGE PAINT 2013-1	COUNTY	TOTAL SHEETS 23	SHEET NO. 5	CONTRACT NO. 78355
#MODELNAME#		PLOT SCALE * 40.0000' / 1"	PLOT DATE * 3/29/2013	SCALE: _____ SHEET _____ OF _____ SHEETS STA. _____ TO STA. _____		* FRANKLIN & WILLIAMSON ILLINOIS FED. AID PROJECT							

**DETAIL OF TRAFFIC CONTROL  
AT ENTRANCE RAMP**

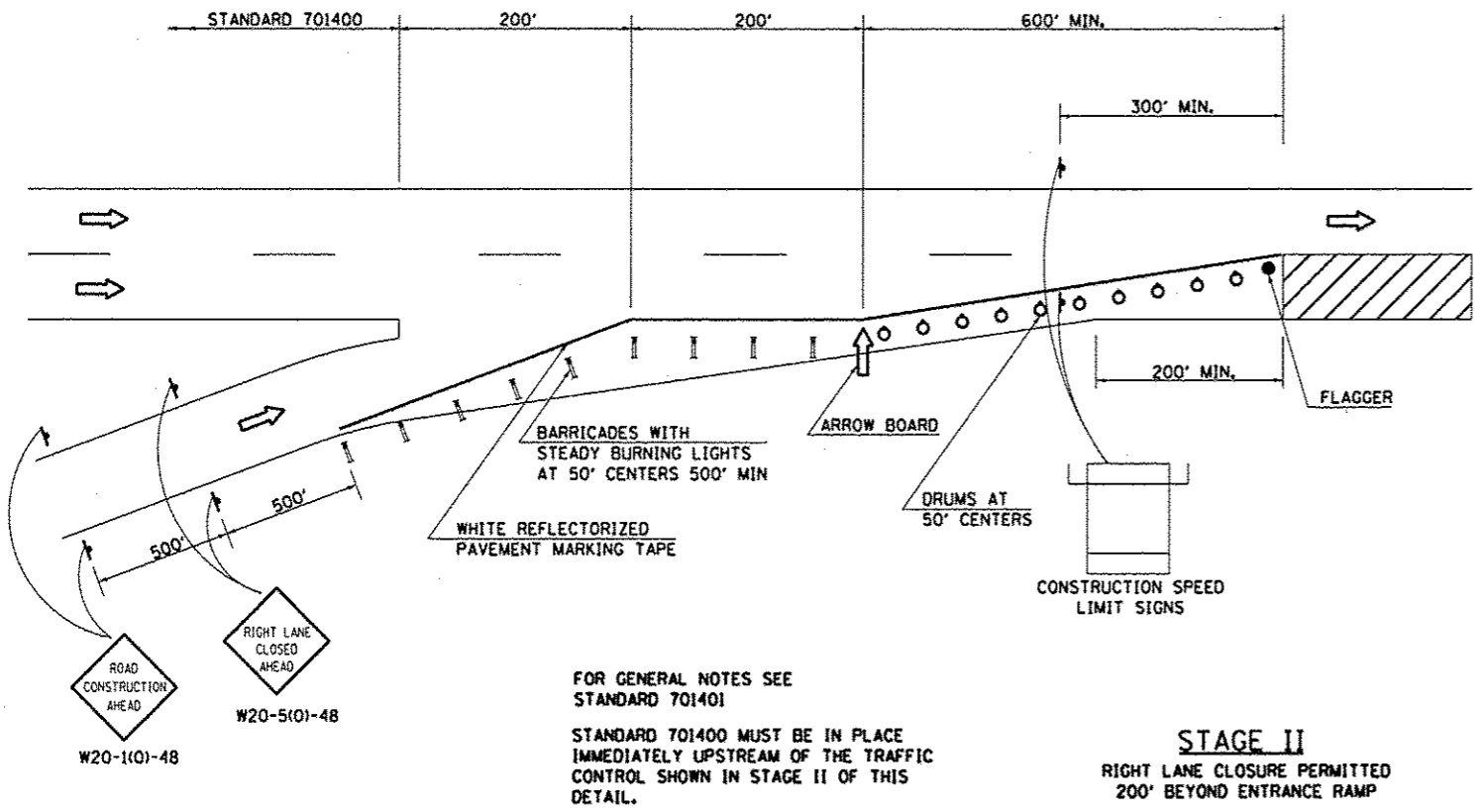
**WHERE RAMPS ARE OUTSIDE WORK AREA**



BARRICADES WITH STEADY BURNING LIGHTS AT 50' CENTERS (DURING NON-WORKING HOURS BARRICADES SHOULD BE TURNED PERPENDICULAR TO RAMP TRAFFIC)

FOR GENERAL NOTES SEE STANDARD 701401

**STAGE I  
RIGHT LANE CLOSURE PERMITTED AT  
ENTRANCE RAMP**



BARRICADES WITH STEADY BURNING LIGHTS AT 50' CENTERS 500' MIN

WHITE REFLECTORIZED PAVEMENT MARKING TAPE

FOR GENERAL NOTES SEE STANDARD 701401

STANDARD 701400 MUST BE IN PLACE IMMEDIATELY UPSTREAM OF THE TRAFFIC CONTROL SHOWN IN STAGE II OF THIS DETAIL.

**STAGE II  
RIGHT LANE CLOSURE PERMITTED  
200' BEYOND ENTRANCE RAMP**

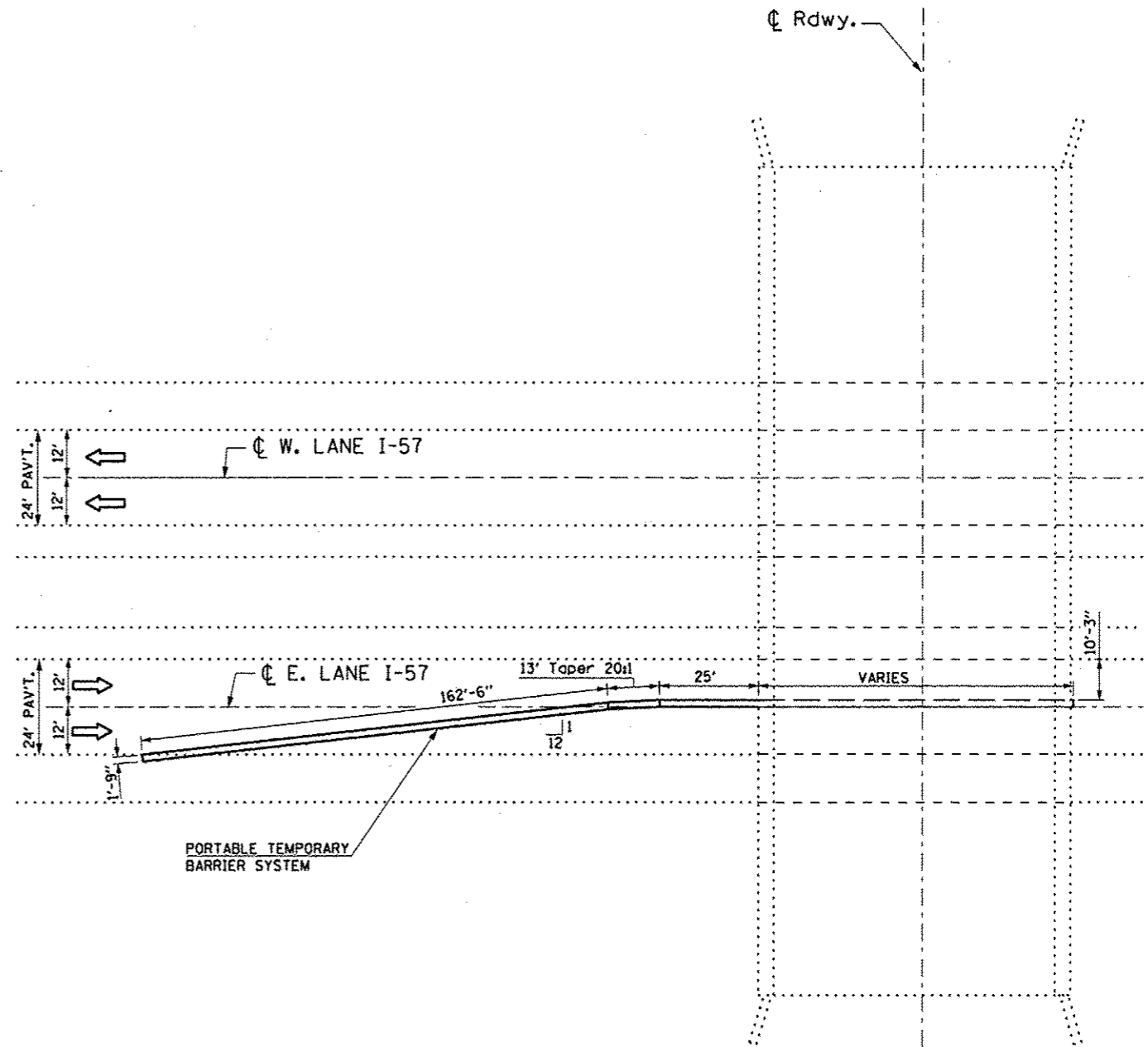
SEE TRAFFIC CONTROL AND PROTECTION STANDARD 701411 FOR DETAILS NOT SHOWN.

REVISIONS	
DRAWN	8-23-09
REVISOR	12-17-01
REVISOR	3-27-08
REVISOR	

STD. 9-43

**PORTABLE TEMPORARY BARRIER SYSTEM  
TYPICAL PLACEMENT**

NOTE: SEE TRAFFIC CONTROL AND PROTECTION, STANDARD 701402 FOR DETAILS NOT SHOWN. SEE SPECIAL PROVISIONS "PORTABLE TEMPORARY BARRIER SYSTEM" AND "LANE RENTAL".



PROJECT NO.	10319666178
DATE	3/29/2013

DRAWN	_____
CHECKED	_____
DATE	_____

REVISOR	_____
REVISOR	_____
REVISOR	_____

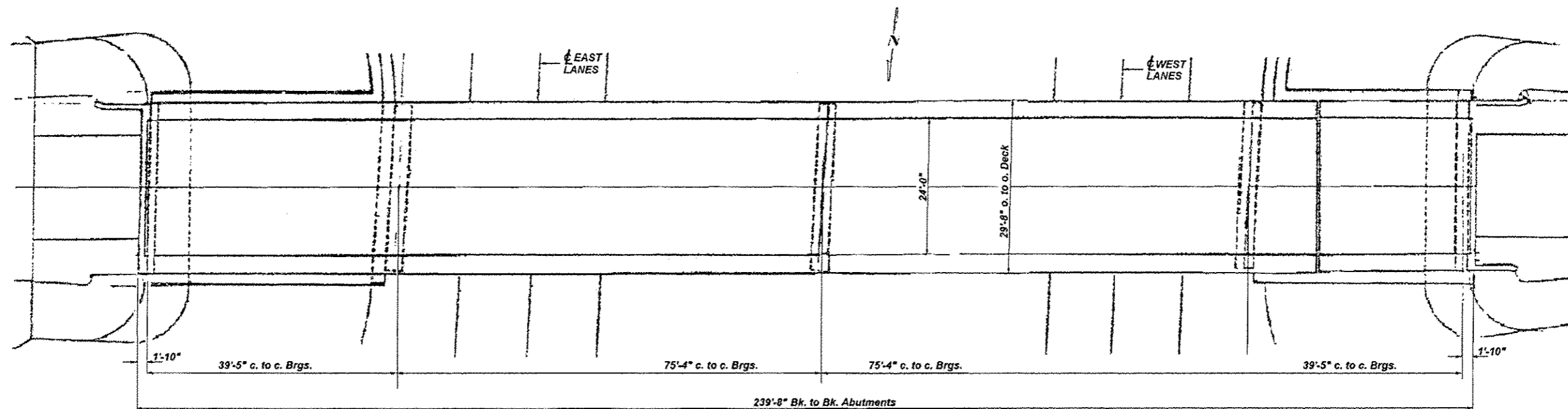
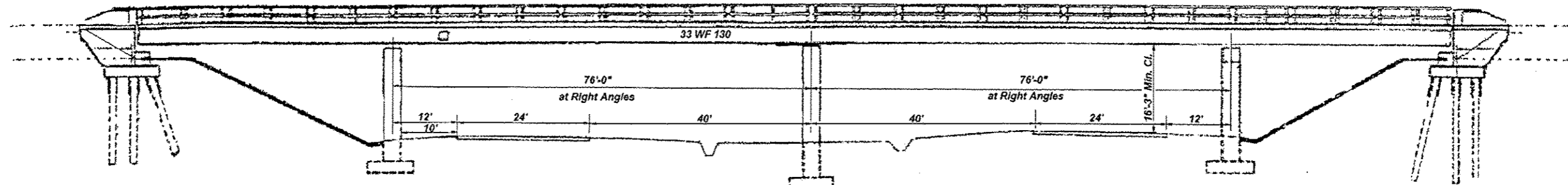
STATE OF ILLINOIS  
DEPARTMENT OF TRANSPORTATION

PORTABLE TEMPORARY BARRIER SYSTEM PLACEMENT  
ENTRANCE RAMPS OUTSIDE WORK LIMITS

SCALE: \_\_\_\_\_ SHEET \_\_\_\_\_ OF \_\_\_\_\_ SHEETS STA. \_\_\_\_\_ TO STA. \_\_\_\_\_

F.A.I. RTE.	SECTION	COUNTY	TOTAL SHEETS	SHEET NO.
57	D9 BRIDGE PAINT 2013-1		23	6
CONTRACT NO. 78355			ILLINOIS FED. AID PROJECT	

FRANKLIN & WILLIAMSON



FOR INFORMATION ONLY

FILE NAME =	USER NAME = gautneyrk	DESIGNED -	REVISED -
o:\pvc\work\p\adot\gautneyrk\d0319666\7841-ehs-plan.dgn		DRAWN -	REVISED -
	PLOT SCALE = 48.0000 / 1"	CHECKED -	REVISED -
	PLOT DATE = 3/11/2013	DATE -	REVISED -

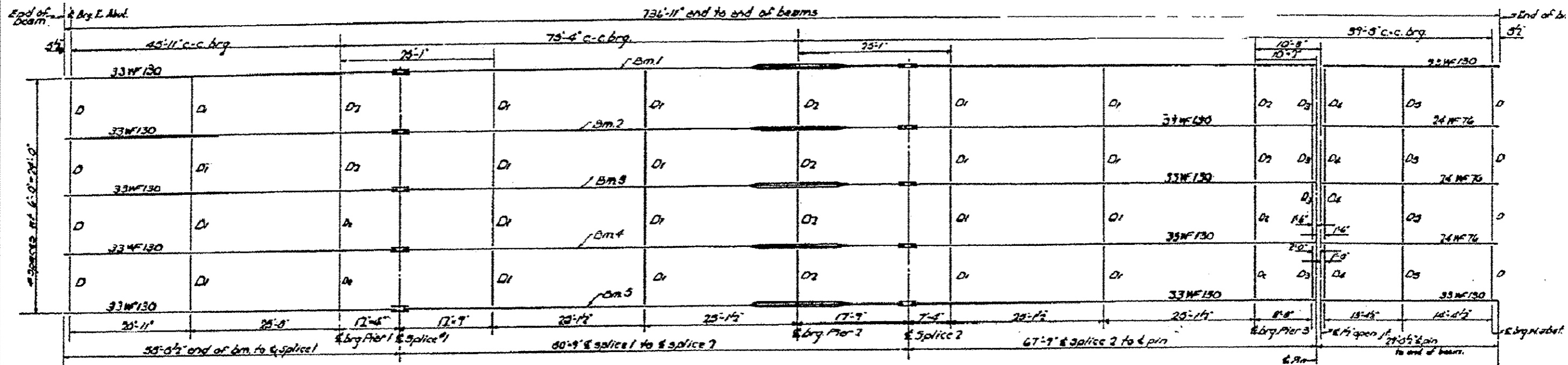
STATE OF ILLINOIS  
DEPARTMENT OF TRANSPORTATION

SN 028-0058  
COUNTRY CLUB ROAD OVER I-57

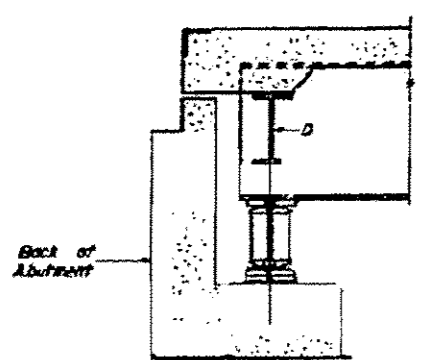
SCALE: \_\_\_\_\_ SHEET \_\_\_\_\_ OF \_\_\_\_\_ SHEETS STA. \_\_\_\_\_ TO STA. \_\_\_\_\_

FBI RTE.	SECTION	COUNTY	TOTAL SHEETS	SHEET NO.
57	09 BRIDGE PAINT 2013-1		23	7
CONTRACT NO. 78355			ILLINOIS FED. AID PROJECT	

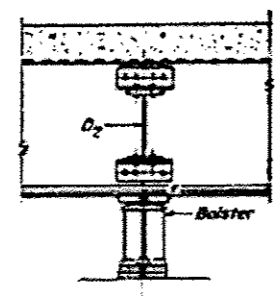
\*FRANKLIN & WILLIAMSON



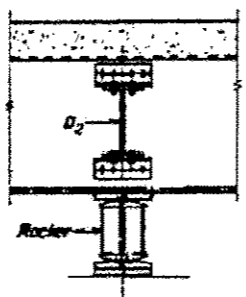
PLAN OF STRUCTURAL STEEL



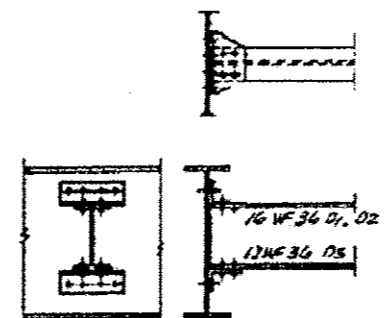
SECTION AT E ABUTMENT



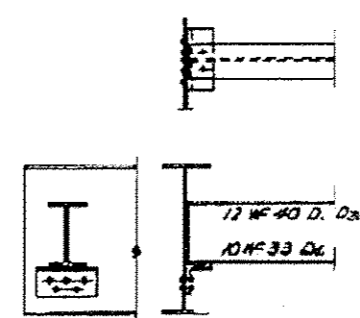
PIER 2



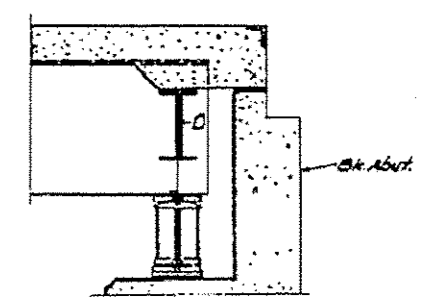
PIER 1 & 3



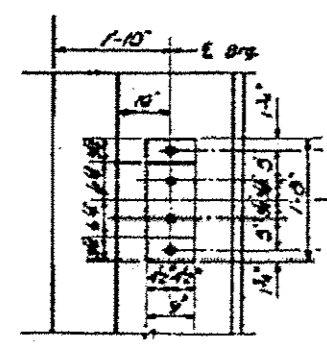
DIAPHRAGM D1, D2, D5



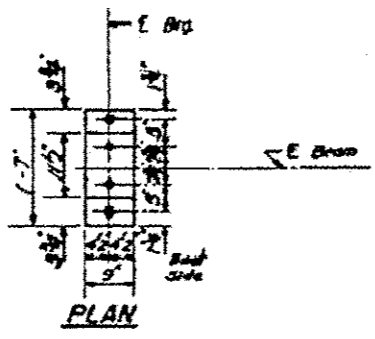
DIAPHRAGM D3, D4



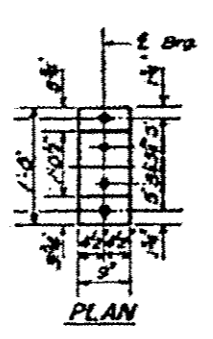
SEC. AT W. ABUT.



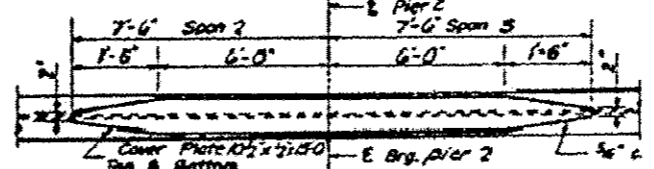
PLAN



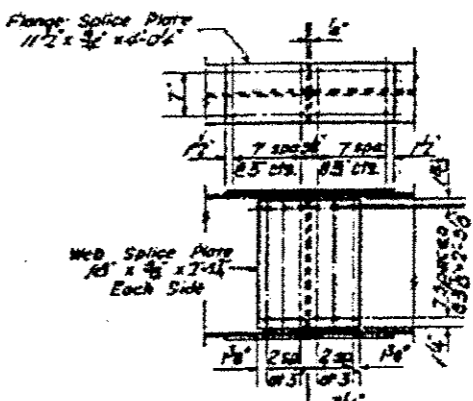
PLAN



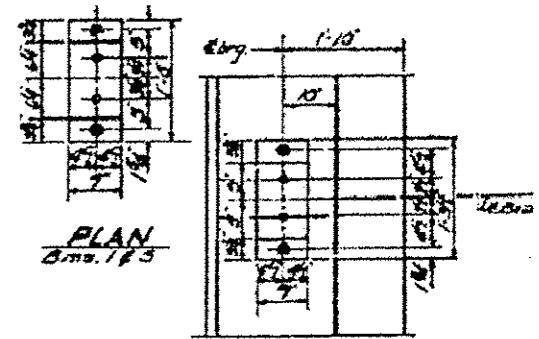
PLAN



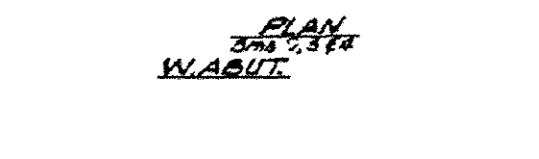
DETAIL OF COVER PLATES AT PIER 2 ONLY



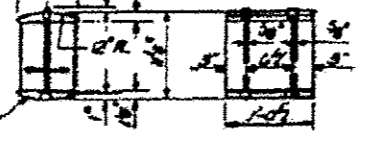
DETAIL OF SPLICE



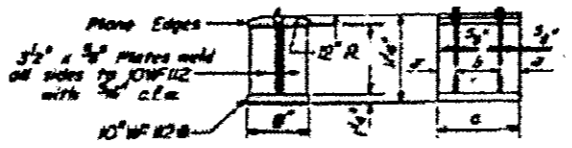
PLAN Bms 1 & 3



PLAN Bms 2, 3 & 4



DETAIL OF BEARING AT PIER 1 OR E ABUT

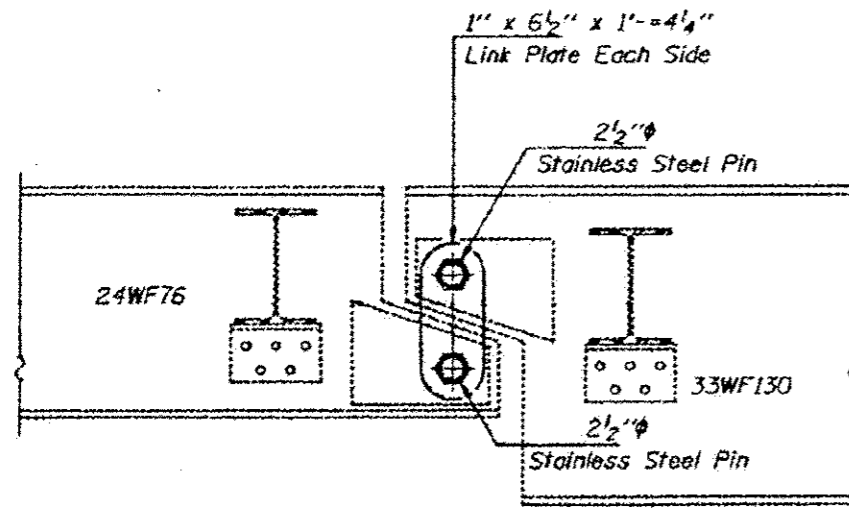


DETAIL OF BEARING AT PIER 2 OR W. ABUT.

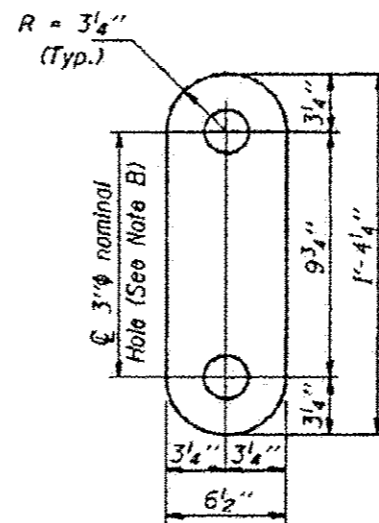
FOR INFORMATION ONLY

FILE NAME =	USER NAME = gautnqrk	DESIGNED -	REVISED -	STATE OF ILLINOIS DEPARTMENT OF TRANSPORTATION	SN 028-0058 COUNTRY CLUB ROAD OVER I-57	SCALE: _____ SHEET _____ OF _____ SHEETS STA. _____ TO STA. _____	<table border="1"> <tr> <th>FAL RTE.</th> <th>SECTION</th> <th>COUNTY</th> <th>TOTAL SHEETS</th> <th>SHEET NO.</th> </tr> <tr> <td>57</td> <td>D9 BRIDGE PAINT 2013-1</td> <td></td> <td>23</td> <td>8</td> </tr> </table>	FAL RTE.	SECTION	COUNTY	TOTAL SHEETS	SHEET NO.	57	D9 BRIDGE PAINT 2013-1		23	8
FAL RTE.	SECTION	COUNTY	TOTAL SHEETS					SHEET NO.									
57	D9 BRIDGE PAINT 2013-1		23					8									
ci:\pwwork\pwwork\gautnqrk\108319666\78	11-whr-plan.dgn	DRAWN -	REVISED -														
	PLOT SCALE = 1/8"=1'-0"	CHECKED -	REVISED -														
#MODELNAME#	PLOT DATE = 3/11/2013	DATE -	REVISED -														

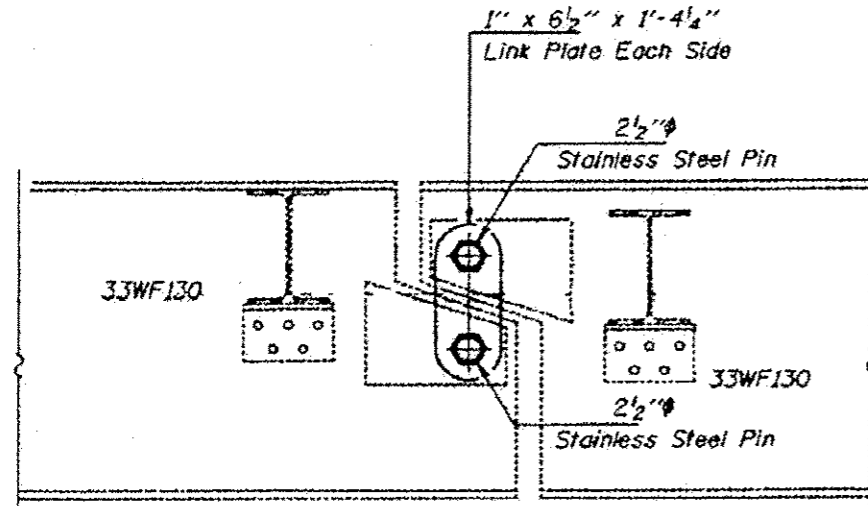




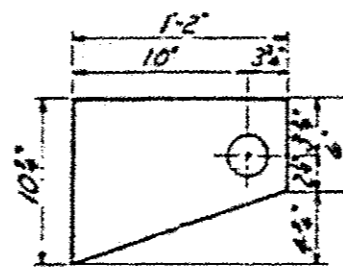
**ELEVATION AT PIN ASSEMBLY  
FOR INTERIOR BEAMS**



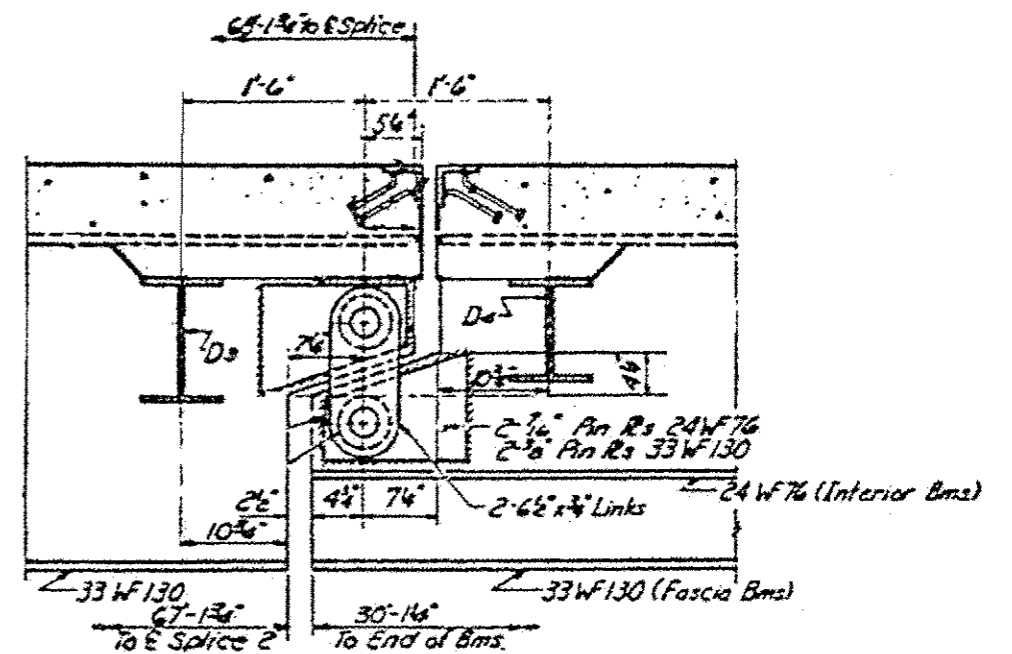
**LINK PLATE DETAIL**



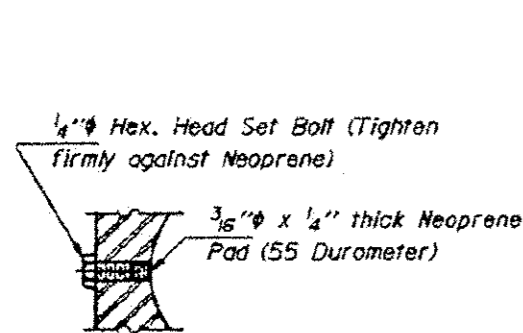
**ELEVATION AT PIN ASSEMBLY  
FOR EXTERIOR BEAMS**



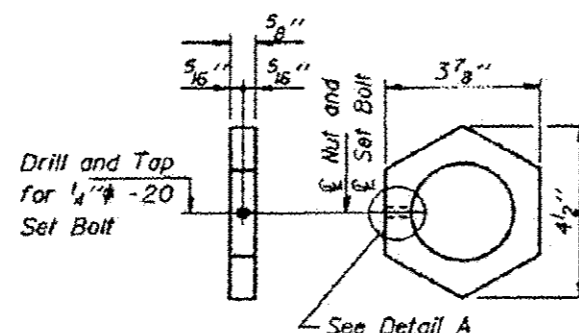
**PIN PLATE**  
14 - 3/8" R's Required  
6 - 7/16" R's Required



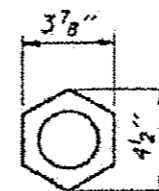
**HINGE DETAIL  
AT ABUTMENT**



**DETAIL A**



**EXTERIOR NUT DETAIL**



**INTERIOR NUT DETAIL**

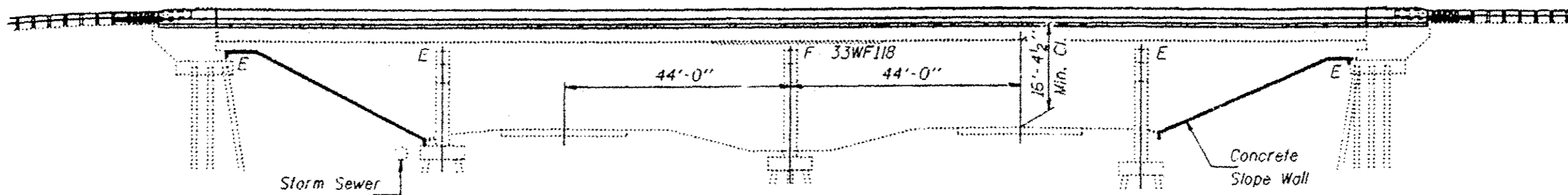
**FOR INFORMATION ONLY**

FILE NAME =	USER NAME = gautneyrk	DESIGNED -	REVISED -
o:\work\p\dot\gautneyrk\d091966\178	41-htr-plan.dgn	DRAWN -	REVISED -
	PLOT SCALE = 48.0000 / 1/8"	CHECKED -	REVISED -
	PLOT DATE = 3/11/2013	DATE -	REVISED -

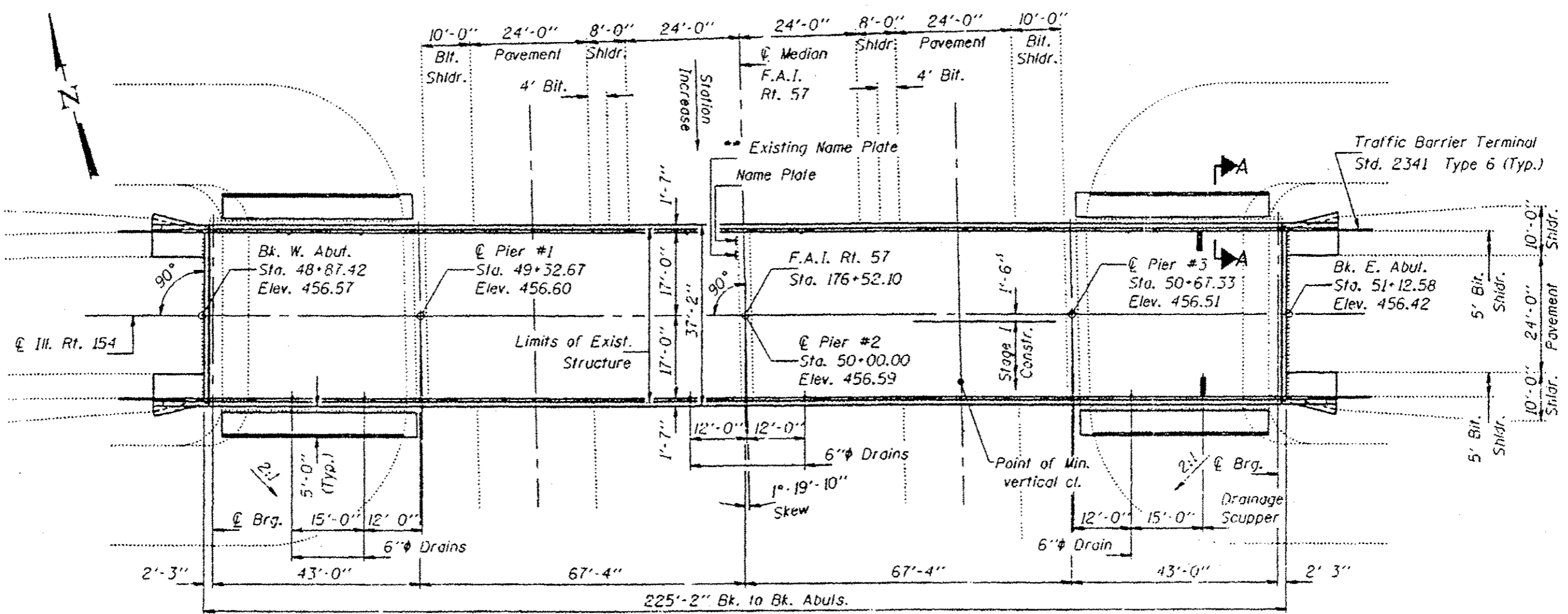
**STATE OF ILLINOIS  
DEPARTMENT OF TRANSPORTATION**

SN 028-0058  
COUNTRY CLUB ROAD OVER I-57

FAL RTE.	SECTION	COUNTY	TOTAL SHEETS	SHEET NO.
57	09 BRIDGE PAINT 2013-1		23	9
CONTRACT NO. 78355			ILLINOIS FED. AID PROJECT	



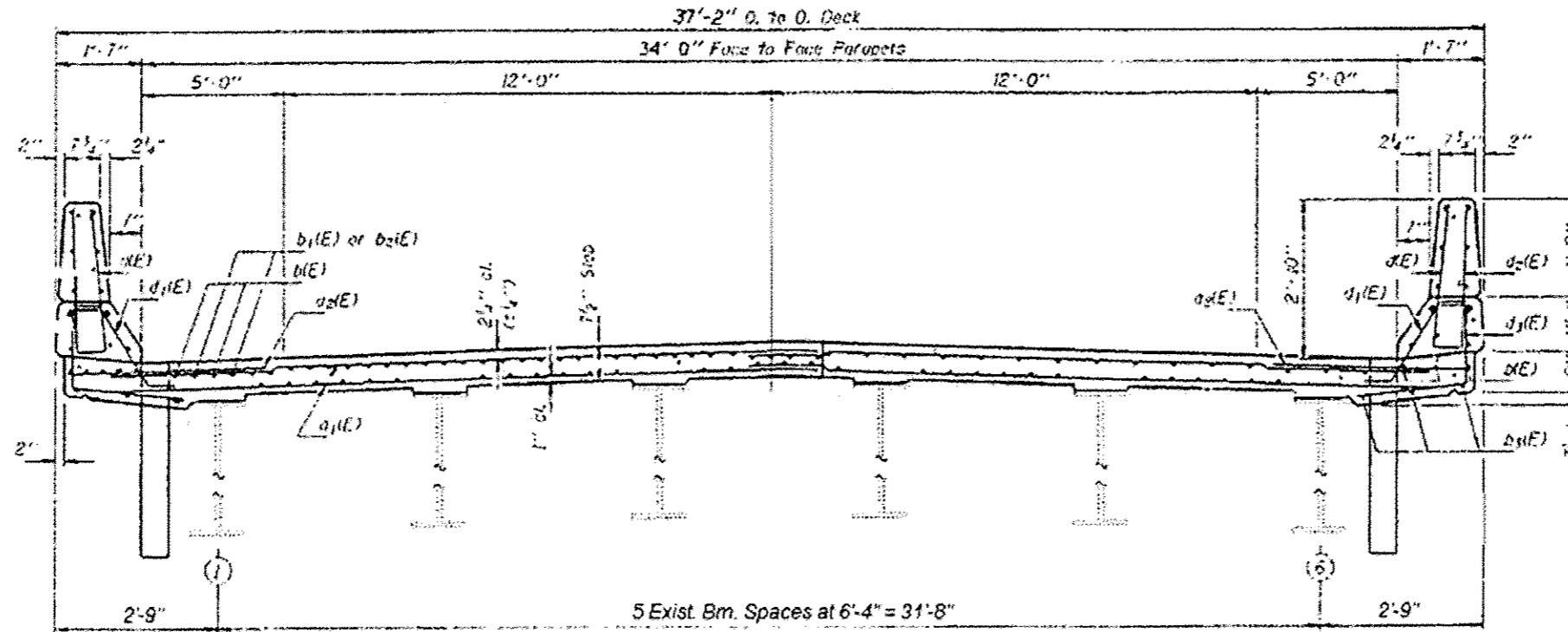
**ELEVATION**



**PLAN**

**FOR INFORMATION ONLY**

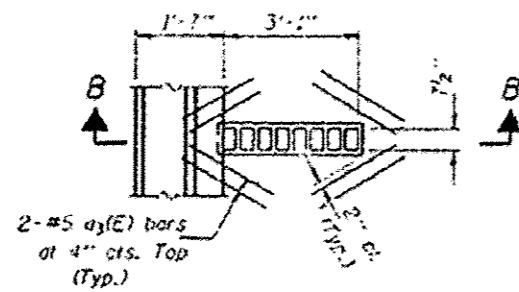
FILE NAME =	USER NAME = gautneyrk	DESIGNED -	REVISED -	<b>STATE OF ILLINOIS DEPARTMENT OF TRANSPORTATION</b>	028-0059 IL 154 OVER I-57	FBI	SECTION	COUNTY	TOTAL SHEETS	SHEET NO.	
c:\pvc\work\pav\dot\gautneyrk\03119666\7841-shr-plan.dgn	PLOT SCALE = 48.0000 1/32	DRAWN -	REVISED -			57	D9 BRIDGE PAINT 2013-1		23	10.	
#MODELNAME#	PLOT DATE = 3/11/2013	CHECKED -	REVISED -			<b>CONTRACT NO. 78355</b>					
		DATE -	REVISED -			ILLINOIS FED. AID PROJECT					



NEAR PIER

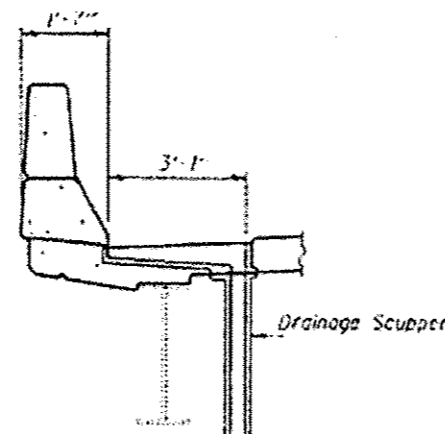
CROSS SECTION

NEAR MIDSPAN

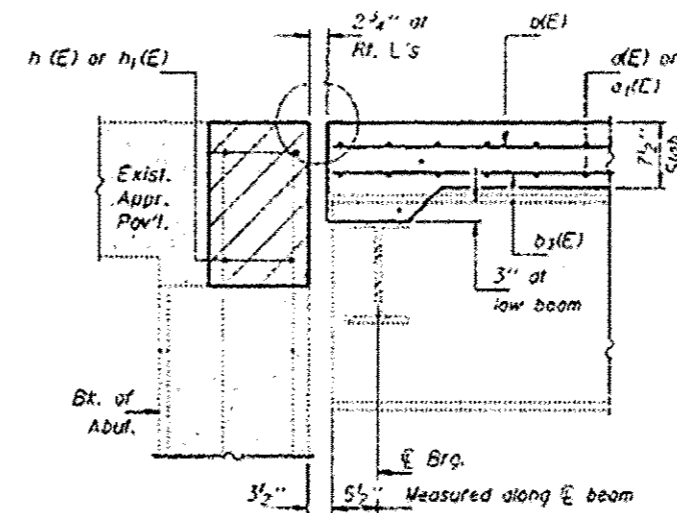


PLAN

DRAIN SCUPPER



SECTION B-B



SECTION A-A

FOR INFORMATION ONLY

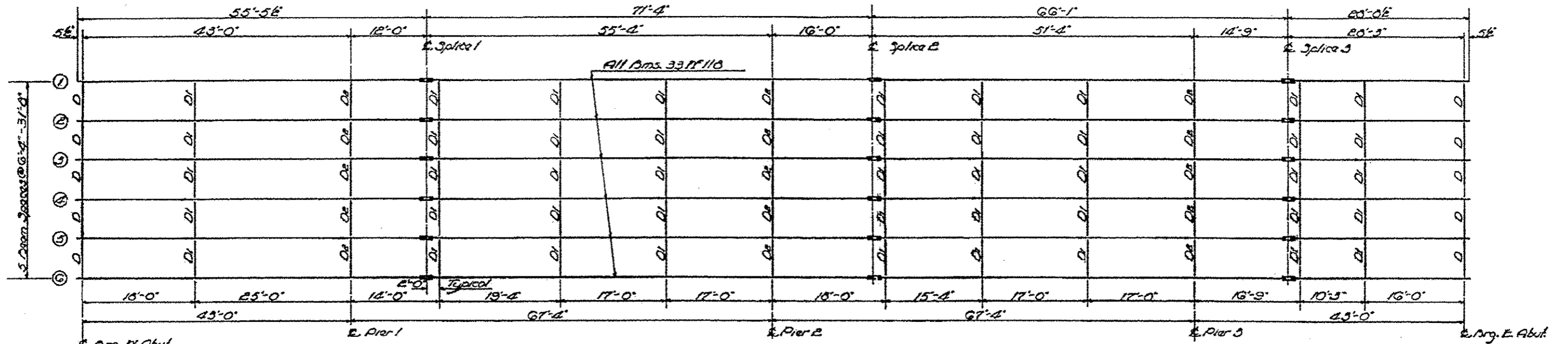
FILE NAME #	USER NAME # gautneyrk	DESIGNED -	REVISED -
o:\p\work\p\dot\gautneyrk\d831\866\78	41-whi-plan.dgn	DRAWN -	REVISED -
#MODEL NAME#	PLOT SCALE = 48.0000 / in.	CHECKED -	REVISED -
	PLOT DATE = 3/11/2013	DATE -	REVISED -

STATE OF ILLINOIS  
DEPARTMENT OF TRANSPORTATION

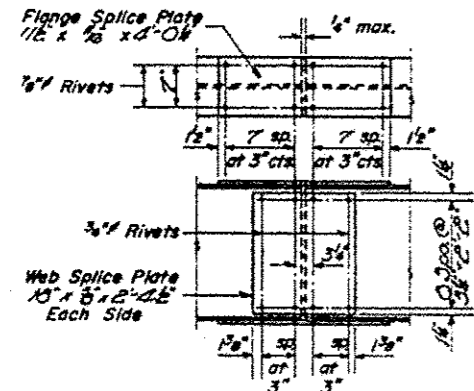
028-0059  
IL 154 OVER I-57

FBI RTE.	SECTION	COUNTY	TOTAL SHEET
57	09 BRIDGE PAINT 2013-1	*	23 11.
			CONTRACT NO. 78355
ILLINOIS FED. AID PROJECT			

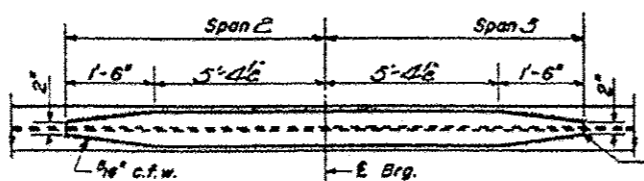
\*FRANKLIN & WILLIAMSON



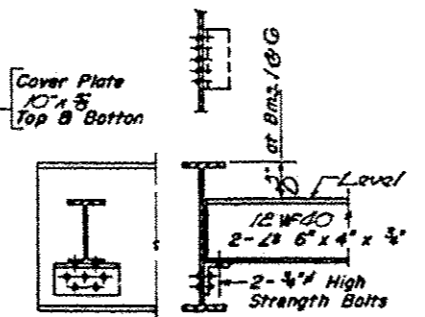
FRAMING PLAN



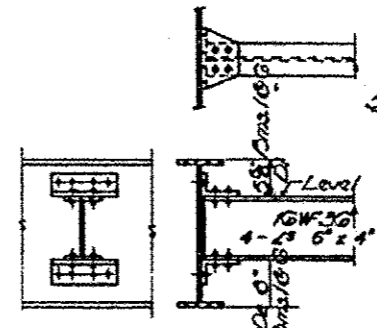
DETAIL OF SPLICE



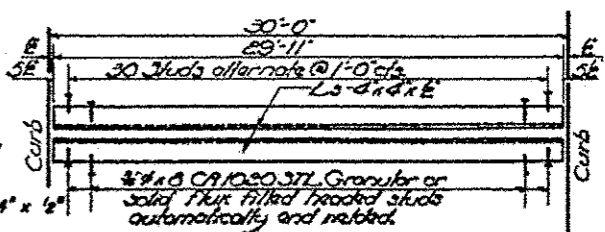
DETAIL OF COVER PLATE



DIAPHRAGM D



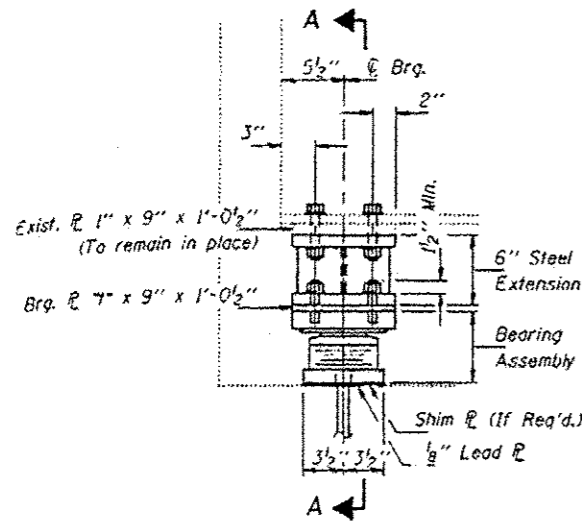
DIAPHRAGM 3 D/G/D2  
45'-Di-Required  
15'-D2-Required



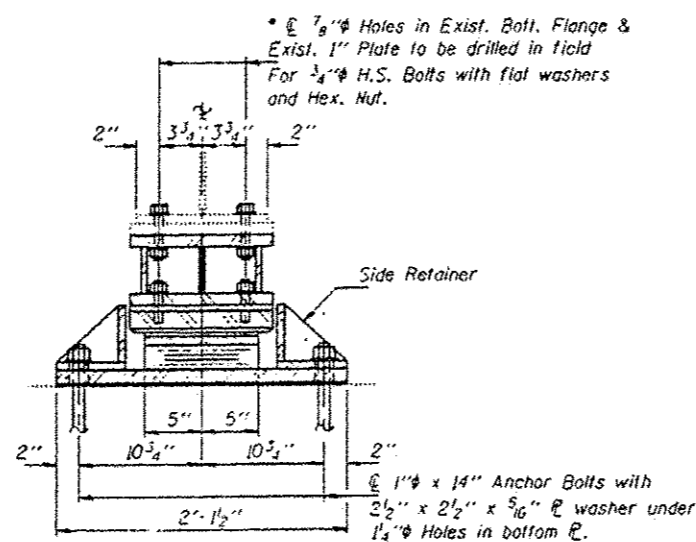
EXPANSION GUARD DETAIL

FOR INFORMATION ONLY

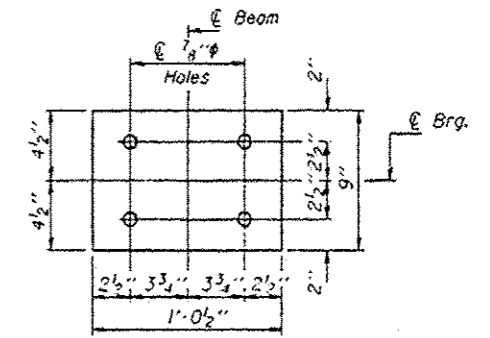
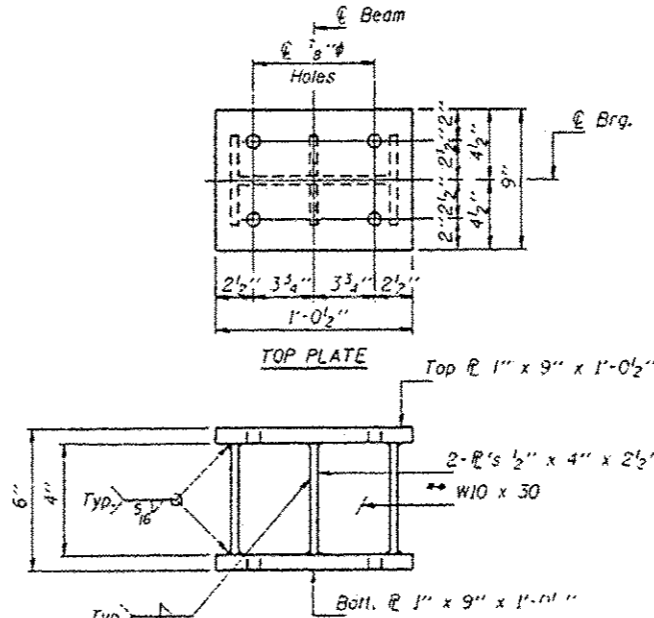
FILE NAME =	USER NAME = gautneyrk	DESIGNED -	REVISED -	STATE OF ILLINOIS DEPARTMENT OF TRANSPORTATION	028-0059 IL 154 OVER I-57	FAL	SECTION	COUNTY	TOTAL SHEETS	SHEET NO.	
ci:\pov_work\povdot\gautneyrk\08219666\78	41-wtr-plan.dgn	DRAWN -	REVISED -			57	D9 BRIDGE PAINT 2013-1	*	23	12	
#MODELNAME#	PLOT SCALE = 40.0000 / 1 in.	CHECKED -	REVISED -			CONTRACT NO. 78355					
	PLOT DATE = 3/11/2013	DATE -	REVISED -			ILLINOIS FED. AID PROJECT					



ELEVATION AT ABUTS.

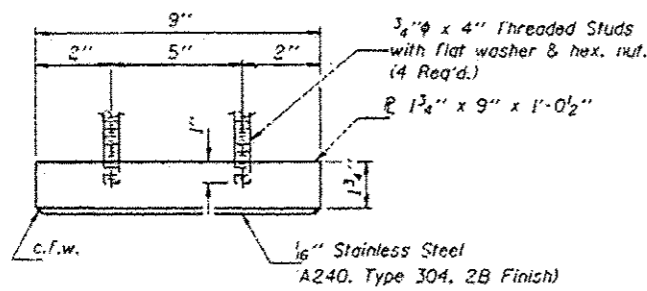


SECTION A-A

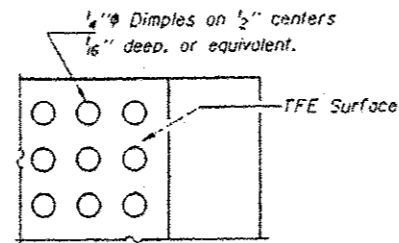


BEARING PLATE

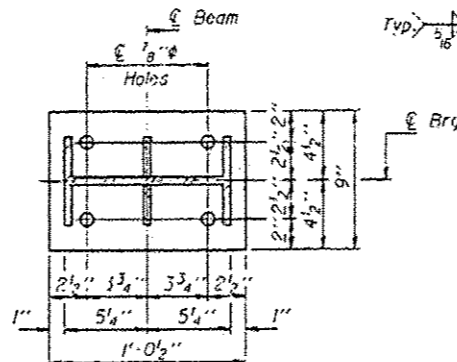
**TYPE II TFE ELASTOMERIC EXP. BRG. BEAMS #1 THRU #6**  
(12 Required)



TOP BEARING ASSEMBLY



PLAN-TFE SURFACE



BOTTOM PLATE

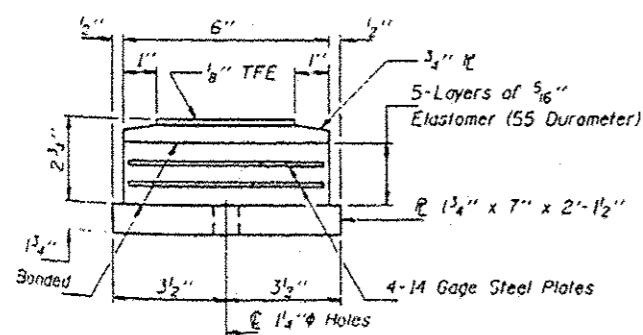
STEEL EXTENSION

**\*\* BEARING PLATE "4" DIMENSIONS**

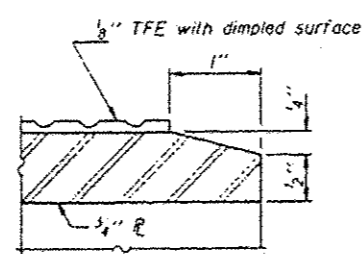
Dim.	Dim.	#1	#2	#3	#4	#5	#6
"7" W. Abut.	1/2"	1/16"	3/8"	5/16"	5/16"	1/4"	
"1" E. Abut.	1/2"	1/16"	5/16"	1/4"	3/16"	1/8"	

\*\* Based on the survey elevations. The contractor shall verify and make adjustments if necessary.

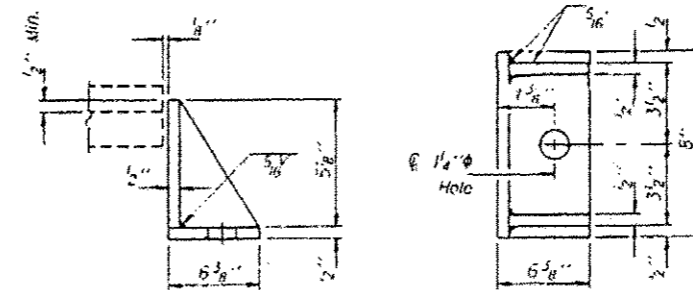
Notes: See sheet #13 of 18 for Anchor Bolt installation. Existing Anchor Bolts to be cut off flush with top of cap and ground smooth. Cost incidental to "Jack and Remove Existing Bearing." Weight of Steel Shim Plates, Lead Plates, Anchor Bolts, nuts and washers and Side Retainers is included in "Structural Steel".



BOTTOM BEARING ASSEMBLY



SECTION THRU TFE



SIDE RETAINER

Equivalent rolled angle with stiffeners will be allowed in lieu of welded plates.

FOR INFORMATION ONLY

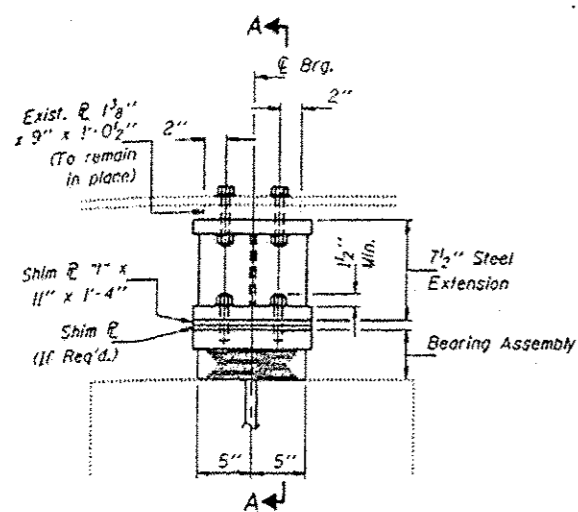
FILE NAME =	USER NAME = gautneyrk	DESIGNED -	REVISED -
al:\pwwork\pwwork\gautneyrk\d0219666\7841-ahtr-plan.dgn		DRAWN -	REVISED -
	PLOT SCALE = 40.0000 1/32"	CHECKED -	REVISED -
#MODELNAME#	PLOT DATE = 3/11/2013	DATE -	REVISED -

STATE OF ILLINOIS  
DEPARTMENT OF TRANSPORTATION

028-0059  
IL 154 OVER I-57

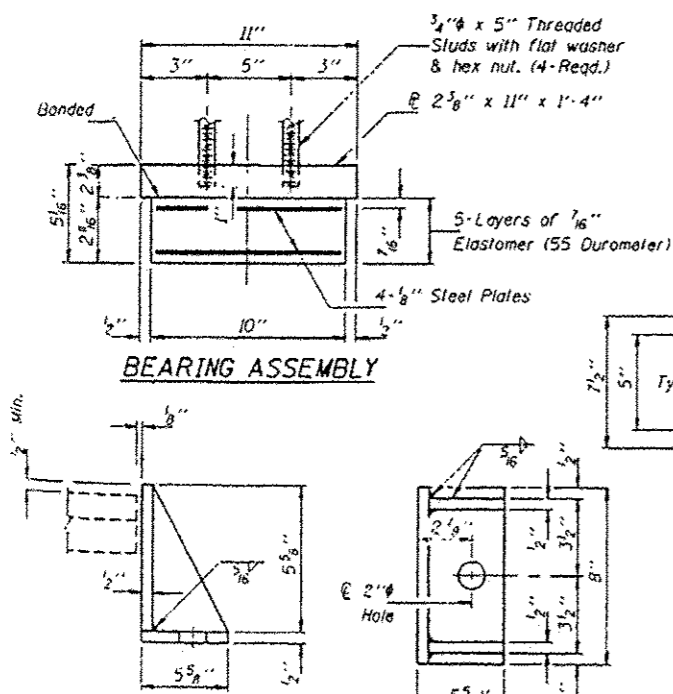
SCALE: \_\_\_\_\_ SHEET \_\_\_\_\_ OF \_\_\_\_\_ SHEETS STA. \_\_\_\_\_ TO STA. \_\_\_\_\_

FAI RTE.	SECTION	COUNTY	TOTAL SHEETS	SHEET NO.
57	D9 BRIDGE PAINT 2013-1		23	13
CONTRACT NO. 78355			ILLINOIS FED. AID PROJECT	



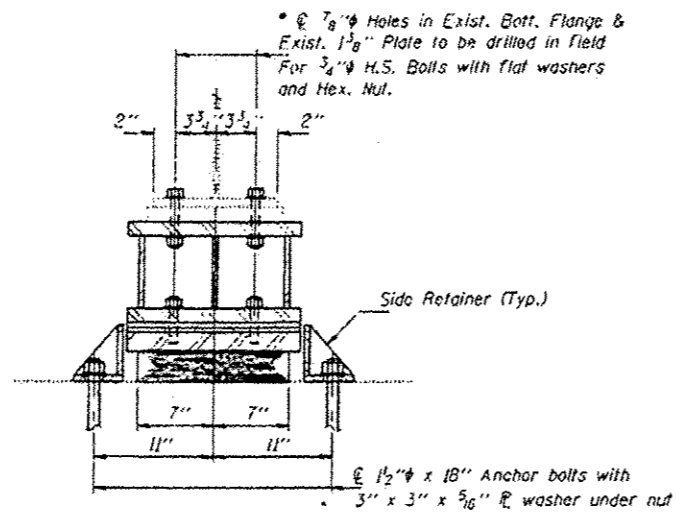
ELEVATION AT PIERS #1 & #3

TYPE I ELASTOMERIC EXP. BRG. BEAMS #1 THRU #6  
(12 Required)

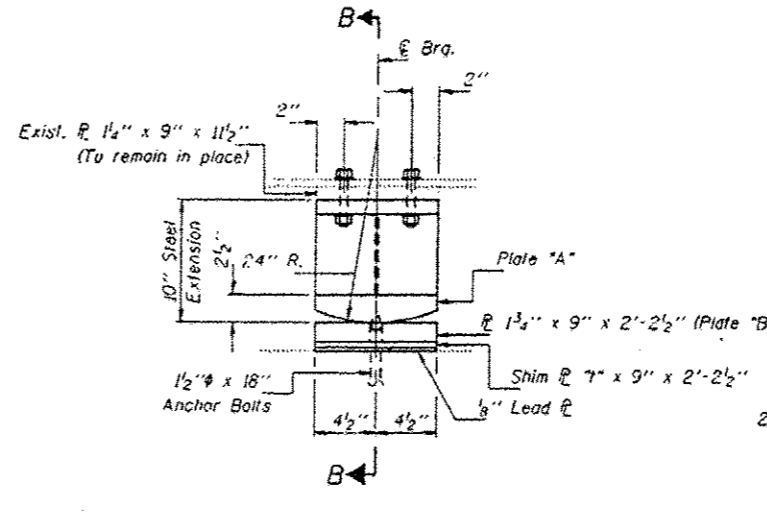


BEARING ASSEMBLY

SIDE RETAINER-PIERS #1 & #3

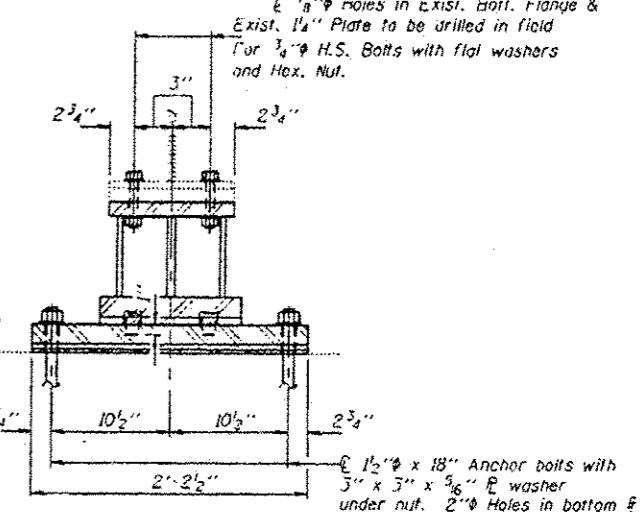


SECTION A-A

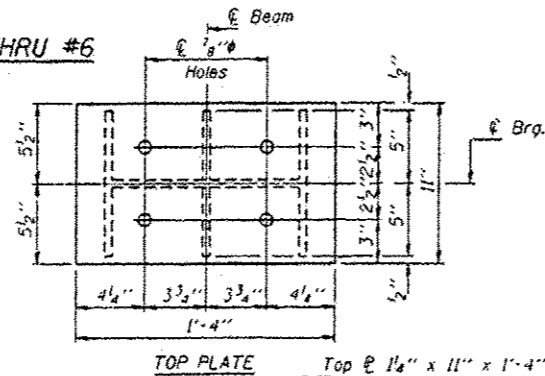


ELEVATION AT PIER #2

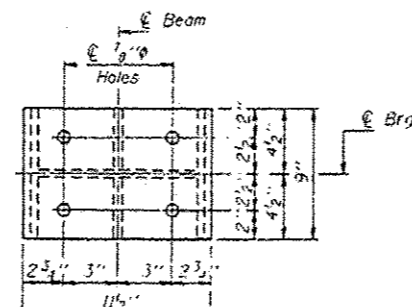
FIXED BEARING BEAMS #1 THRU #6



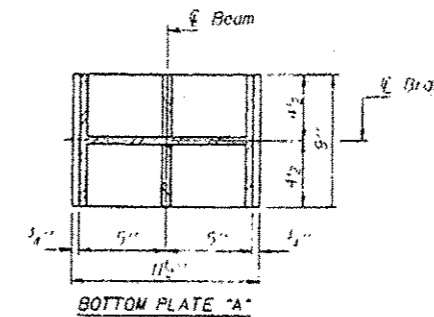
SECTION B-B



TOP PLATE

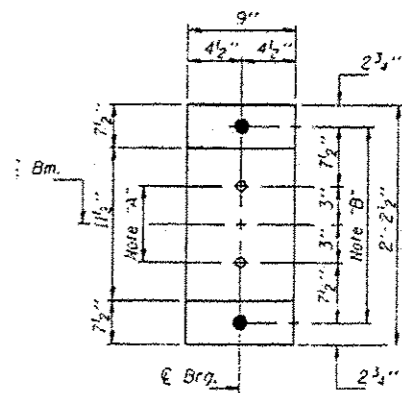


TOP PLATE

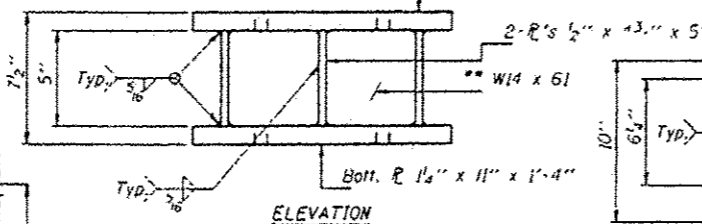


BOTTOM PLATE "A"

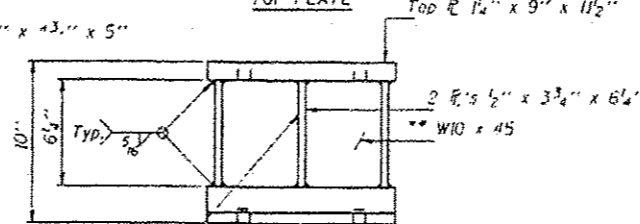
STEEL EXTENSION



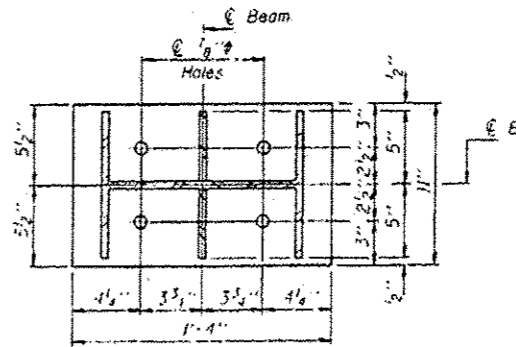
PLAN-BOTTOM PLATE "B"



ELEVATION



ELEVATION



BOTTOM PLATE

STEEL EXTENSION

FOR INFORMATION ONLY

FILE NAME =	USER NAME = gautnyrk	DESIGNED -	REVISED -
c:\pwwork\kaidot\gautnyrk\108379666\70	41-eh-t-plan.dgn	DRAWN -	REVISED -
	PLOT SCALE = 48.0000' / 1"	CHECKED -	REVISED -
#MODELNAME#	PLOT DATE = 3/11/2013	DATE -	REVISED -

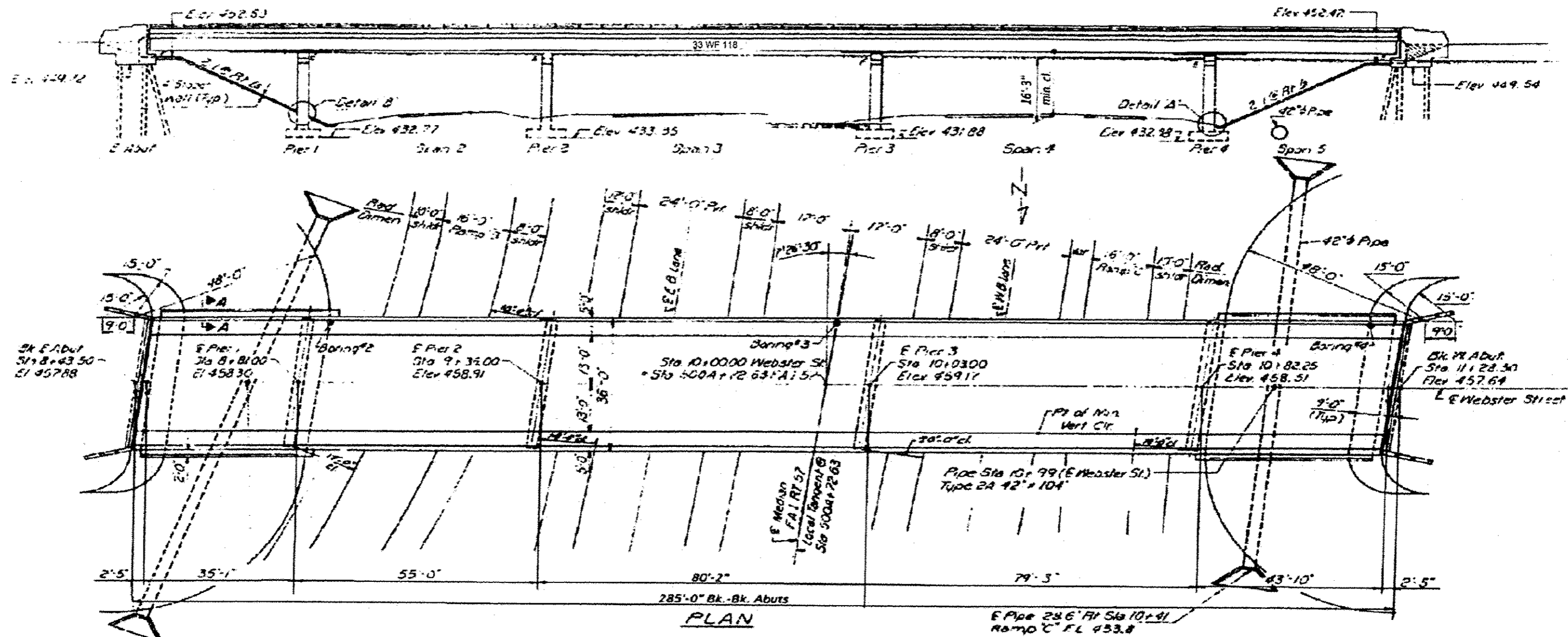
STATE OF ILLINOIS  
DEPARTMENT OF TRANSPORTATION

028-0059  
IL 154 OVER I-57

SCALE: SHEET OF SHEETS STA. TO STA.

FAI RTE.	SECTION	COUNTY	TOTAL SHEETS	SHEET NO.
57	D9 BRIDGE PAINT 2013-1		23	14
CONTRACT NO. 78355				
ILLINOIS FED. AID PROJECT				

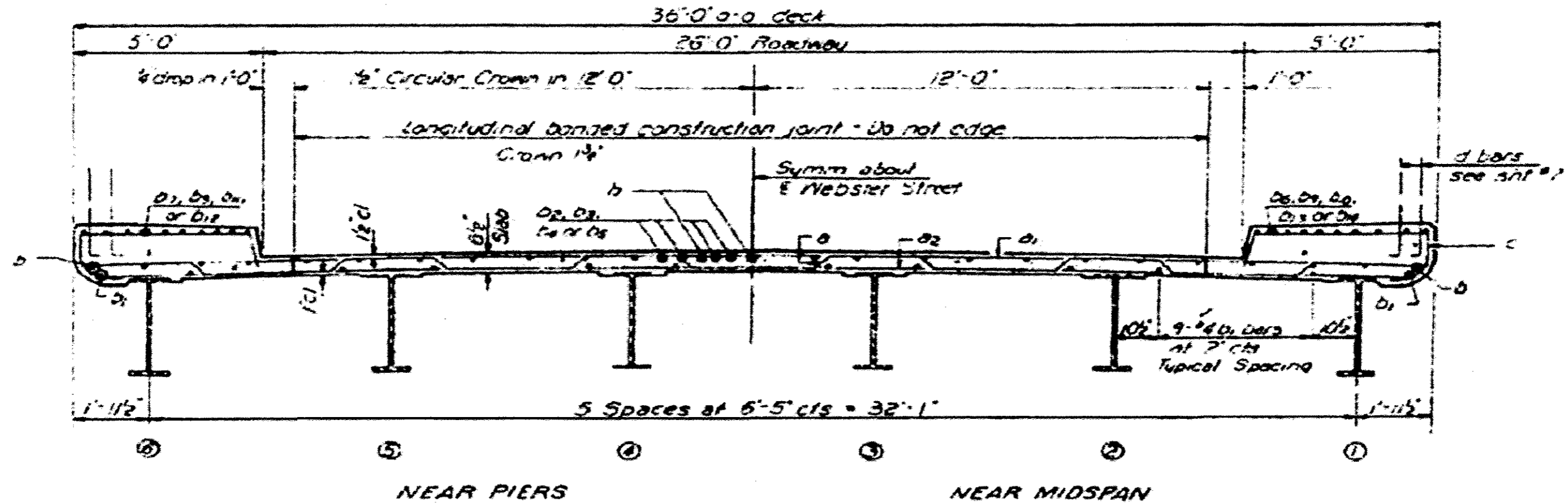
\*FRANKLIN & WILLIAMSON



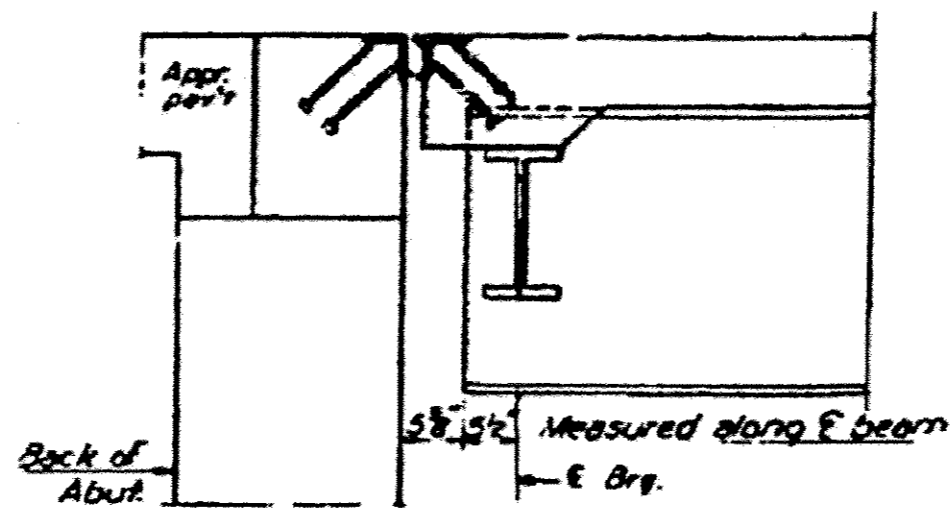
FOR INFORMATION ONLY

\*FRANKLIN & WILLIAMSON

FILE NAME *	USER NAME * gautneyrk	DESIGNED -	REVISED -	<b>STATE OF ILLINOIS DEPARTMENT OF TRANSPORTATION</b>	SN 028-0063	FAT	SECTION	COUNTY	TOTAL	SHEET
en:\work\p\p\gautneyrk\028\9666\78	41-ahb-plan.dgn	DRAWN -	REVISED -		WEBSTER ST. OVER I-57	57	D9 BRIDGE PAINT 2013-1	*	23	19
	PLOT SCALE = 48.0000' / 1"	CHECKED -	REVISED -		SCALE: _____ SHEET _____ OF _____ SHEETS STA. _____ TO STA. _____	CONTRACT NO. 78355				
MODELNAME*	PLOT DATE = 3/11/2013	DATE -	REVISED -		[ILLINOIS] FED. AID PROJECT					



**CROSS SECTION**

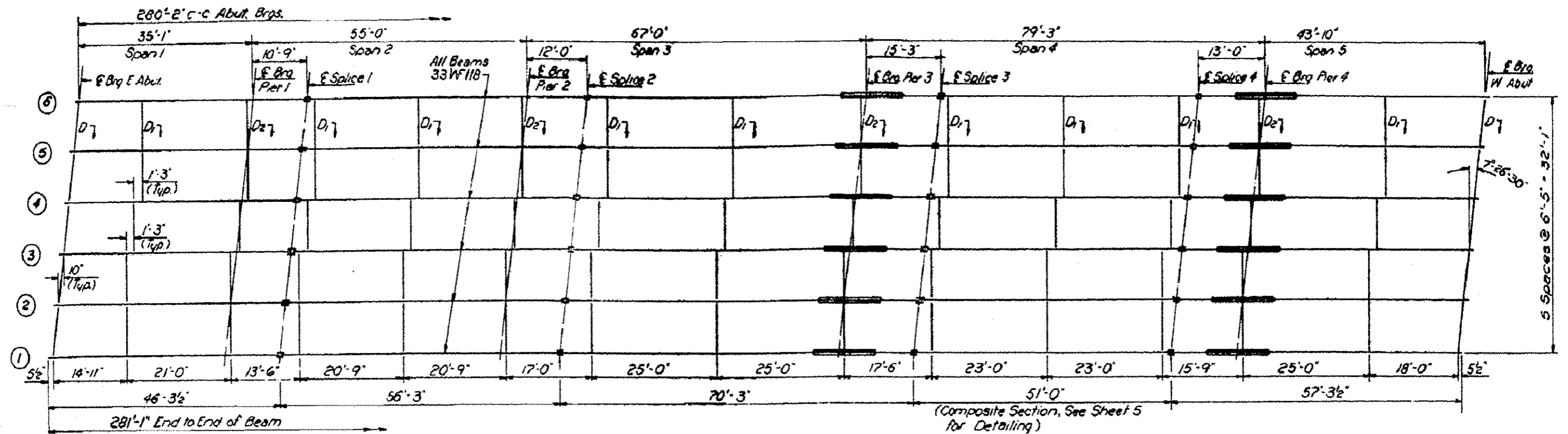


**SECTION AT ABUTMENT**

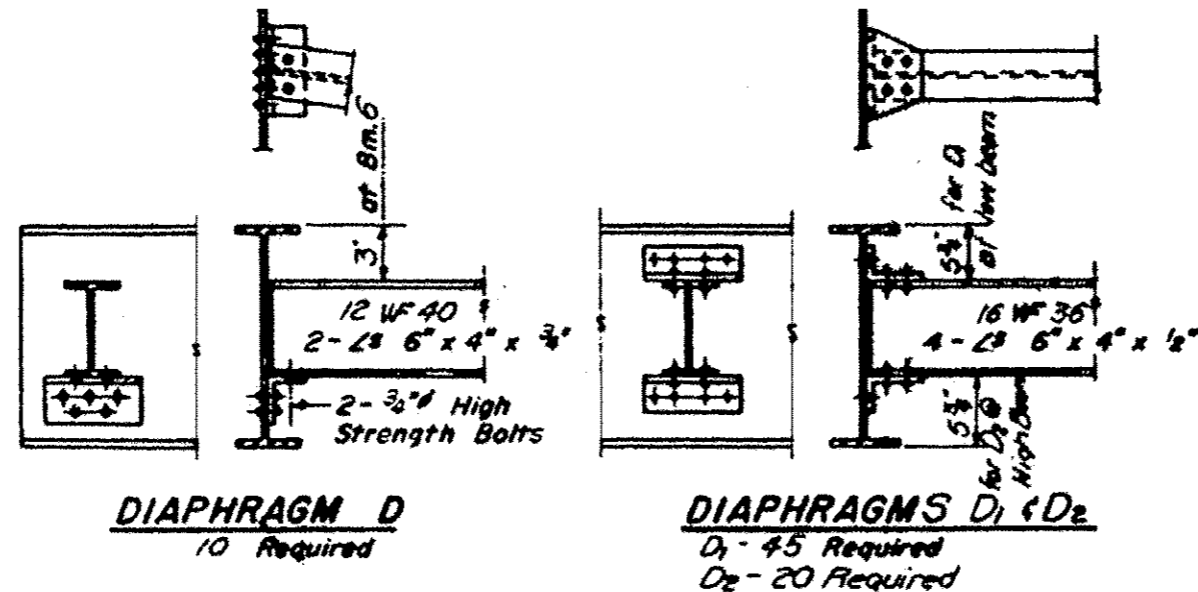
**FOR INFORMATION ONLY**

FILE NAME =	USER NAME = gautnourk	DESIGNED -	REVISED -	<b>STATE OF ILLINOIS DEPARTMENT OF TRANSPORTATION</b>	SN 028-0063	FBI	SECTION	COUNTY	TOTAL SHEETS	SHEET NO.	
o:\pov_work\pavidot\gautnourk\100319660\78	41-ahb-plan.dgn	DRAWN -	REVISED -		WEBSTER ST. OVER I-57	57	D9 BRIDGE PAINT 2013-1			23	16.
	PLOT SCALE = 48,0000 / 1" = 20'	CHECKED -	REVISED -		SCALE: _____	SHEET _____ OF _____ SHEETS		STA. _____ TO STA. _____		CONTRACT NO. 78355	
MODELNAME =	PLOT DATE = 3/11/2013	DATE -	REVISED -				ILLINOIS FED. AID PROJECT				



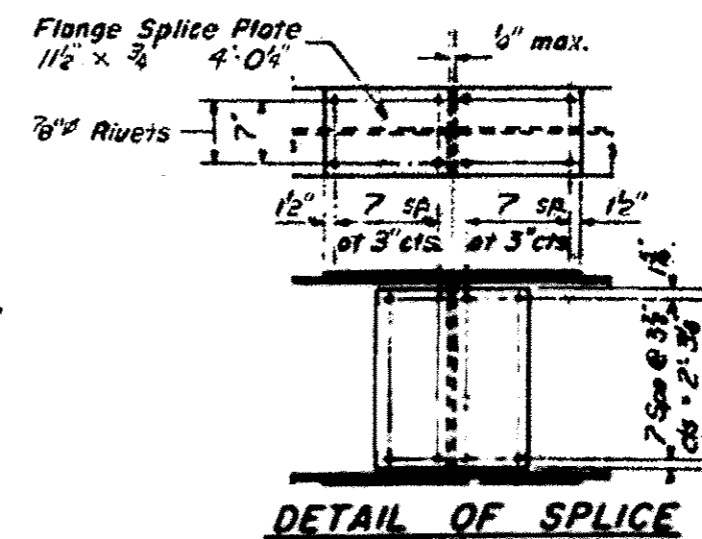


PLAN

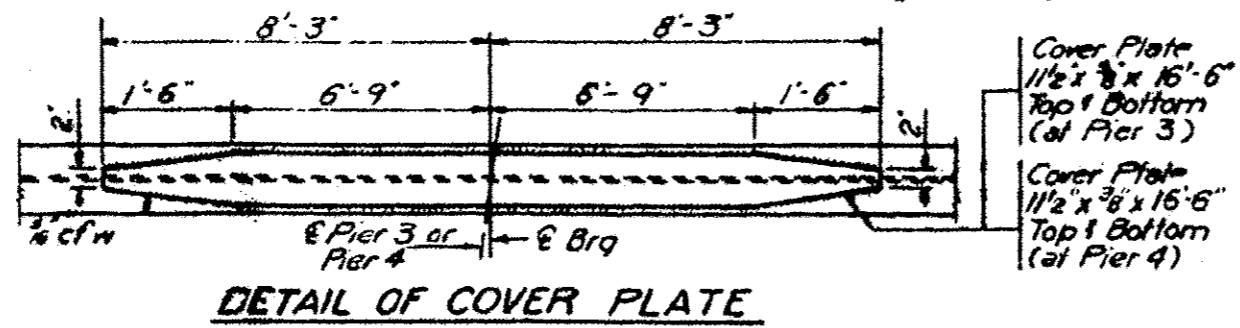


DIAPHRAGM D  
10 Required

DIAPHRAGMS D1 & D2  
D1 - 45 Required  
D2 - 20 Required



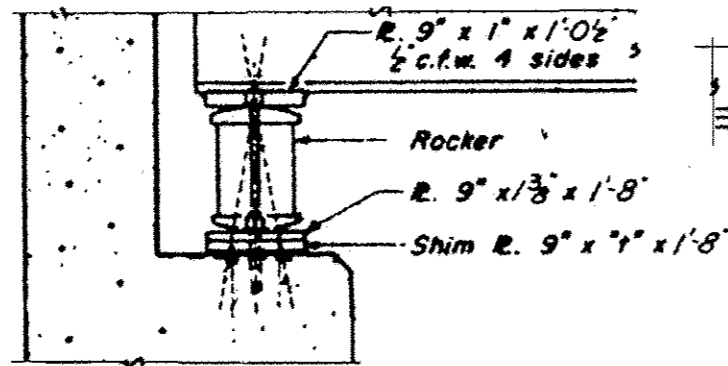
DETAIL OF SPLICE



DETAIL OF COVER PLATE

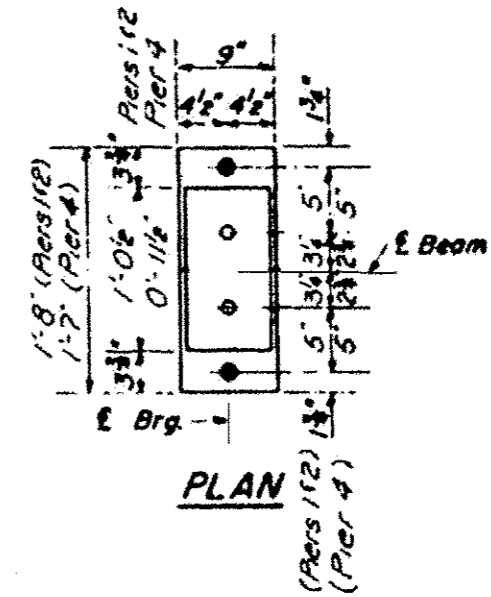
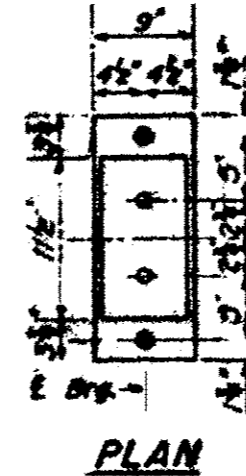
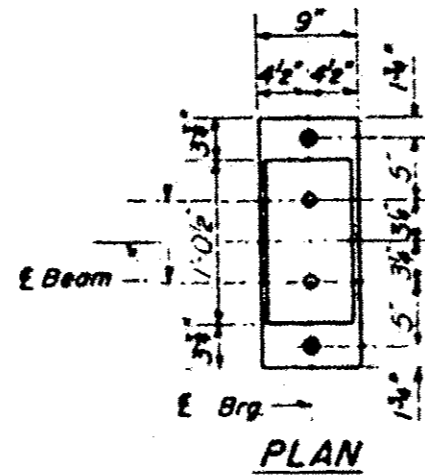
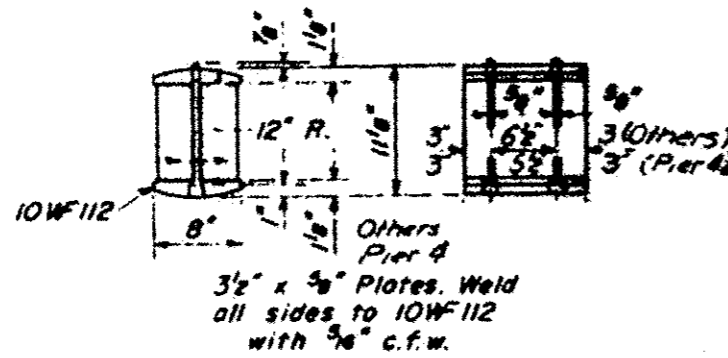
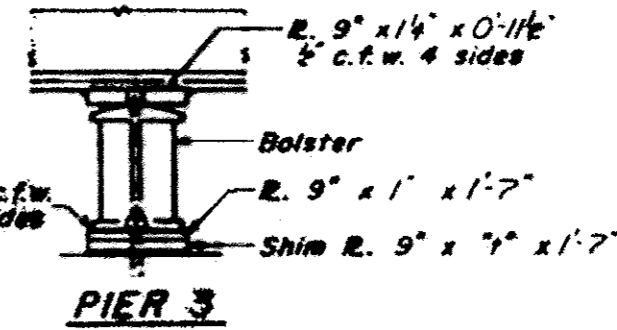
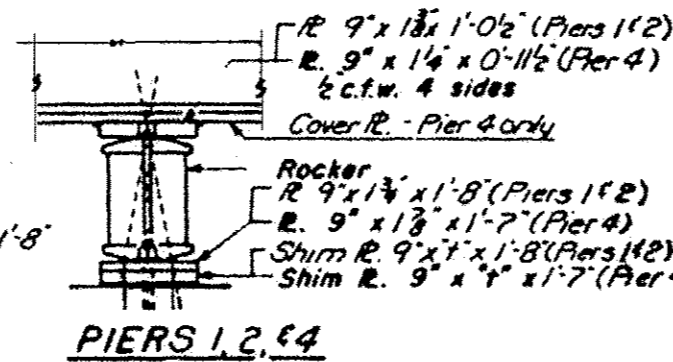
FOR INFORMATION ONLY

FILE NAME =	USER NAME = gautneyrk	DESIGNED -	REVISED -	STATE OF ILLINOIS DEPARTMENT OF TRANSPORTATION	SN 028-0063 WEBSTER ST. OVER I-57	SCALE: _____ SHEET _____ OF _____ SHEETS STA. _____ TO STA. _____	FRANKLIN & WILLIAMSON				
o:\pov_vork\pov\dot\gautneyrk\08090600\78	41-eh1-plan.dgn	DRAWN -	REVISED -				FAI	SECTION	COUNTY	TOTAL SHEETS	SHEET NO.
	PLOT SCALE = 48,0000' / 1"	CHECKED -	REVISED -				57	D9 BRIDGE PAINT 2013-1		23	17
#MODELNAME#	PLOT DATE = 3/11/2013	DATE -	REVISED -				CONTRACT NO. 78355				



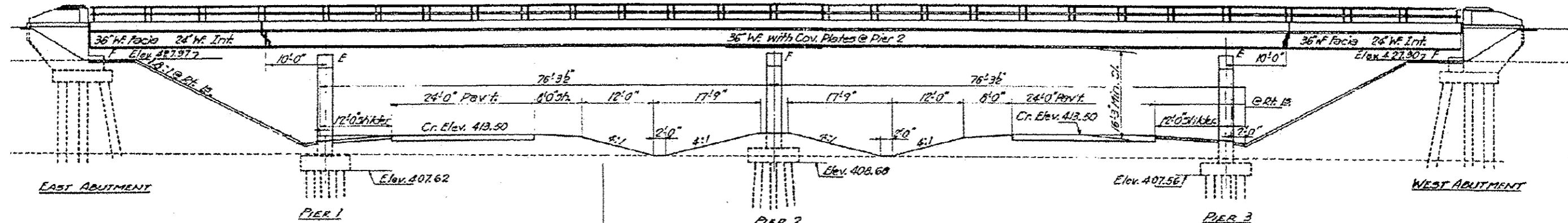
**SECTION AT ABUTMENT**

\*D =  $\frac{1}{8}$ "/100ft. of exp. for every 15° below the normal temp of 50°F.  
 D\*\* =  $\frac{1}{8}$ "/100 ft of exp. for every 15° above the normal temp of 50°F.

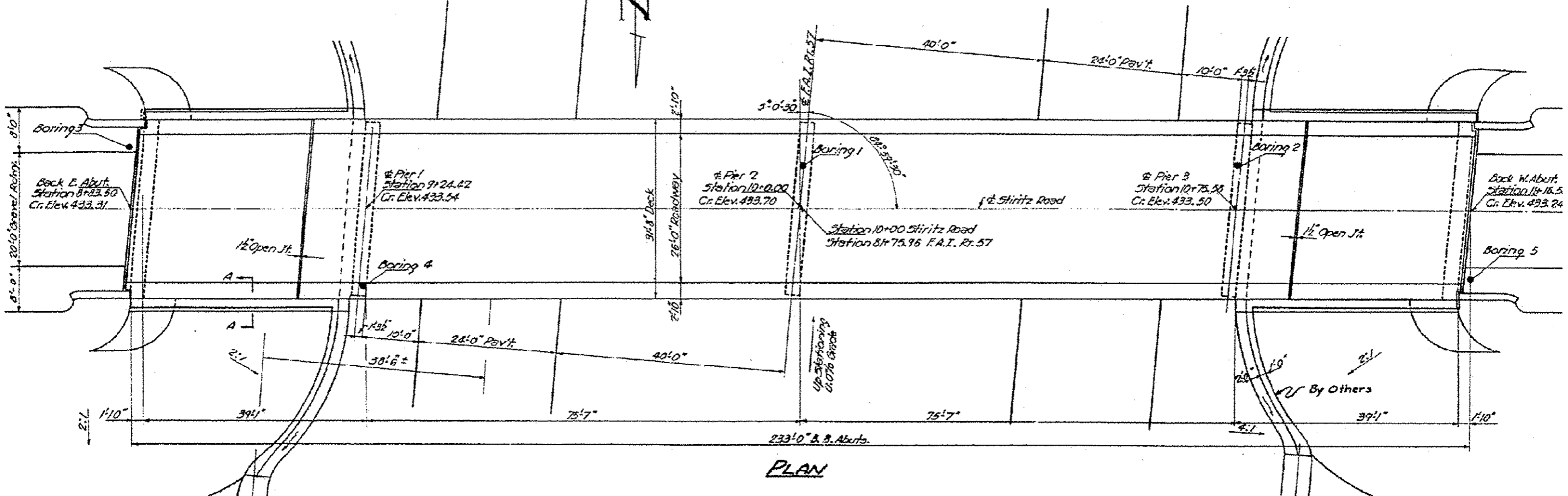


FOR INFORMATION ONLY

FILE NAME =	USER NAME = gautneyrk	DESIGNED -	REVISED -	<b>STATE OF ILLINOIS DEPARTMENT OF TRANSPORTATION</b>	SN 028-0063	FAI	SECTION	COUNTY	TOTAL SHEETS	SHEET NO.	
c:\work\pilotdot\gautneyrk\d831966\78	11-ehp-plan.dgn	DRAWN -	REVISED -		WEBSTER ST. OVER I-57	57	D9 BRIDGE PAINT 2013-I	.	23	18-	
PLOT SCALE = 48,0000 / 1/4	CHECKED -	REVISED -	DATE -		SCALE: _____	SHEET _____	OF _____	SHEETS	STA. _____	TO STA. _____	CONTRACT NO. 78955
PLOT DATE = 3/11/2013	DATE -	REVISED -									ILLINOIS FED. AID PROJECT
#MODELNAME#											



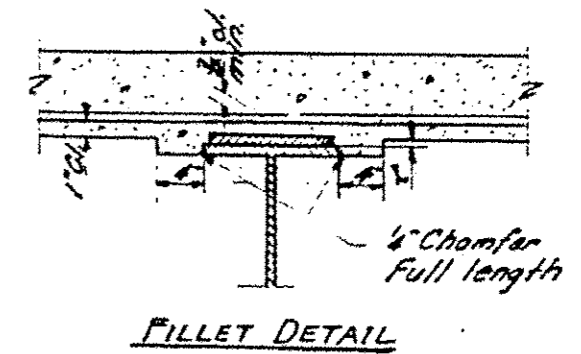
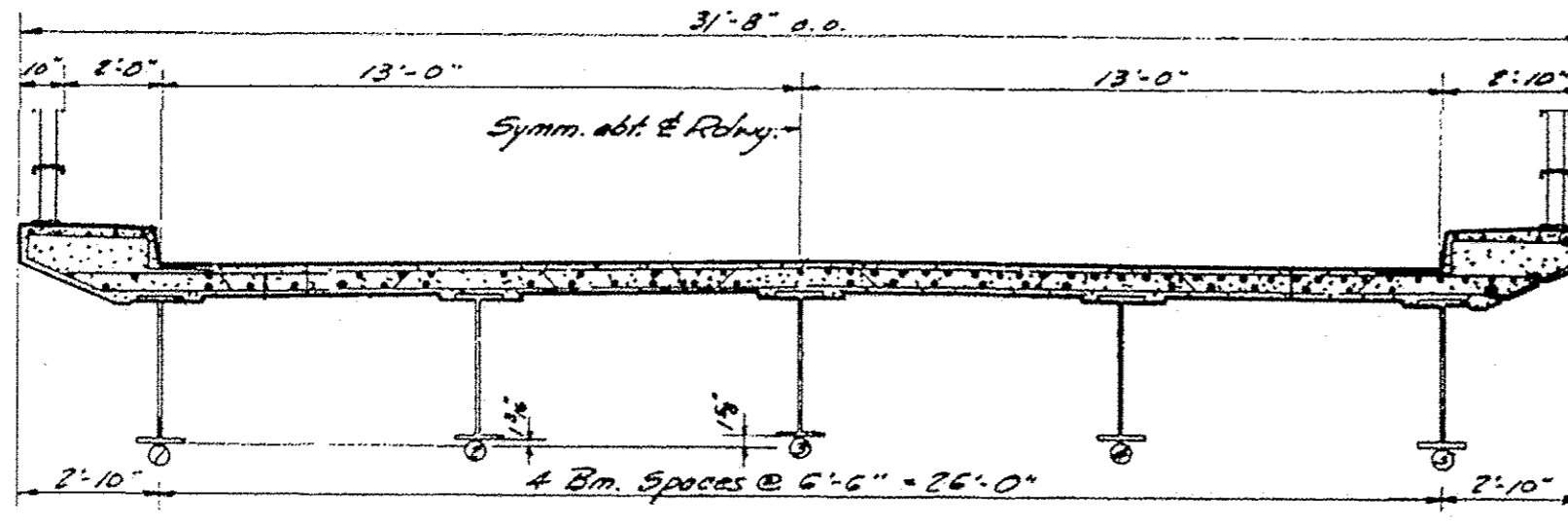
ELEVATION



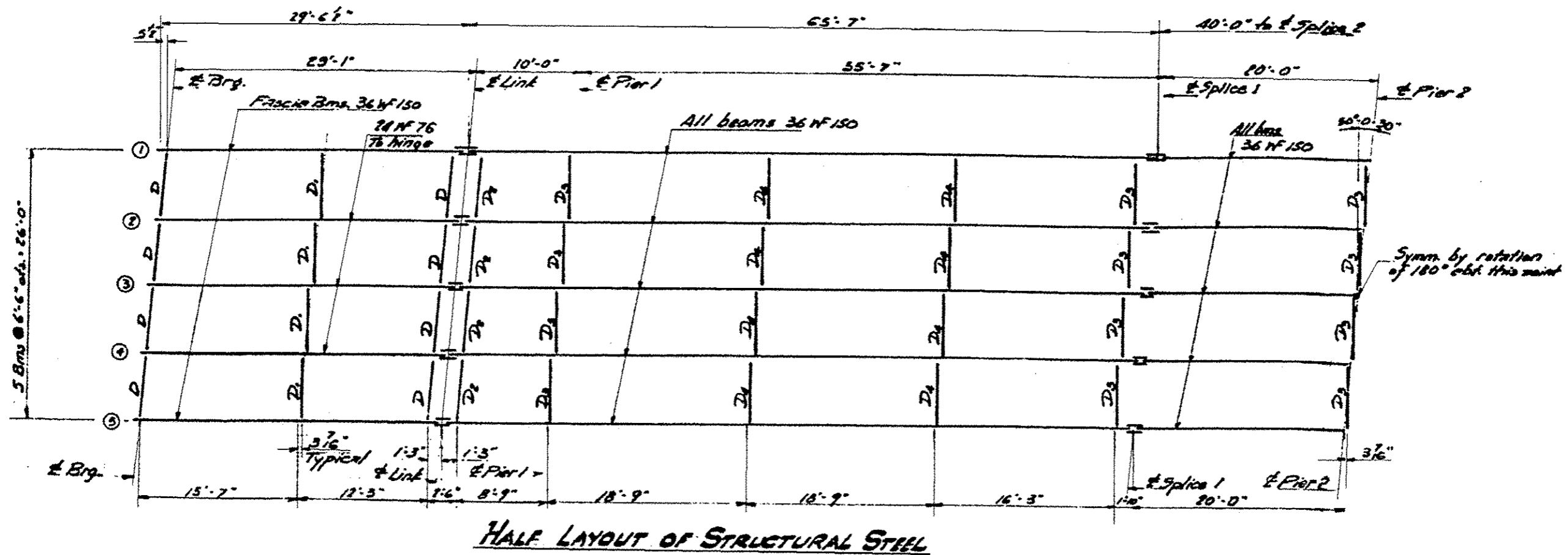
PLAN

FOR INFORMATION ONLY

FILE NAME =	USER NAME = gautneyrk	DESIGNED -	REVISED -	<b>STATE OF ILLINOIS DEPARTMENT OF TRANSPORTATION</b>	SN 100-0053 STIRITZ RD. OVER I-57	FBI	SECTION	COUNTY	TOTAL SHEETS	SHEET NO.	FRANKLIN & WILLIAMSON CONTRACT NO. 78395
g:\work\p\p\p\gautneyrk\10397666\78397666.dgn	41-eh-01-en.dgn	DRAWN -	REVISED -			57	D9 BRIDGE PAINT 2013-1		23	19.	
PLOT SCALE = 48.0000' / 1"		CHECKED -	REVISED -			SCALE: _____ SHEET _____ OF _____ SHEETS STA. _____ TO STA. _____					
PLOT DATE = 3/11/2013		DATE -	REVISED -			ILLINOIS FED. AID PROJECT					



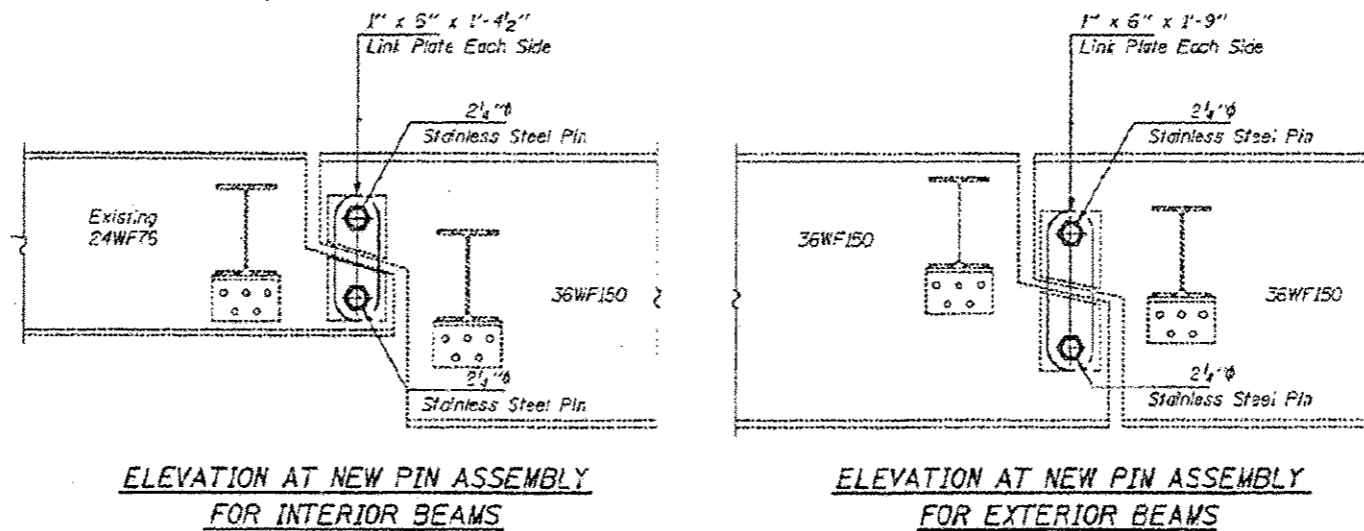
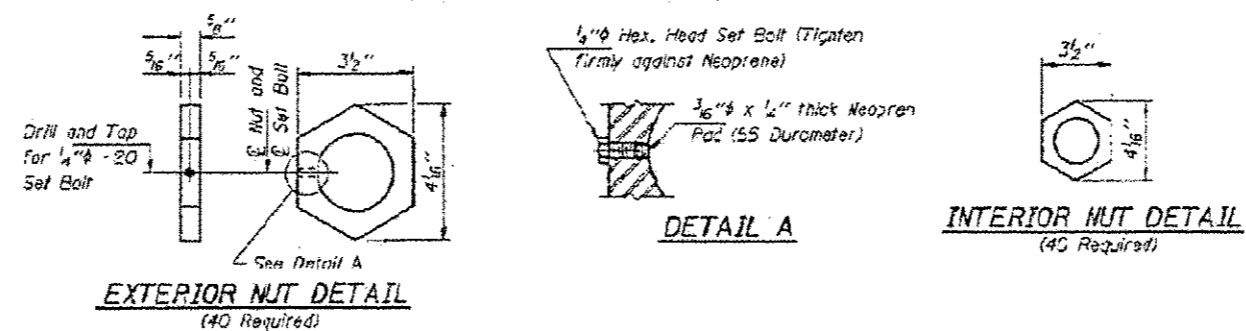
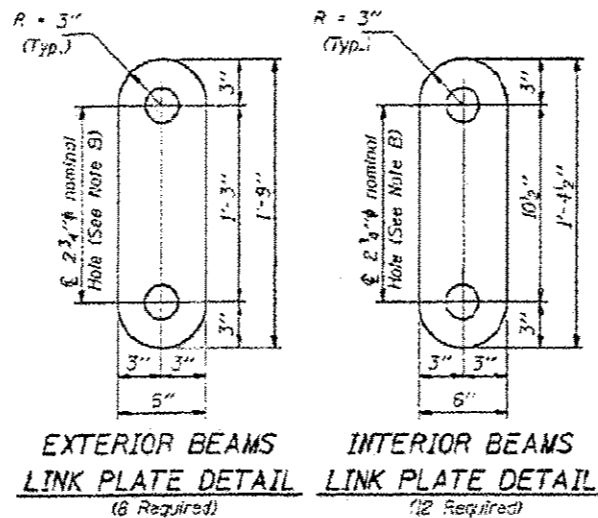
NEAR & SPANS  
**TYPICAL CROSS SECTION**  
 NEAR PIERS



**HALF LAYOUT OF STRUCTURAL STEEL**

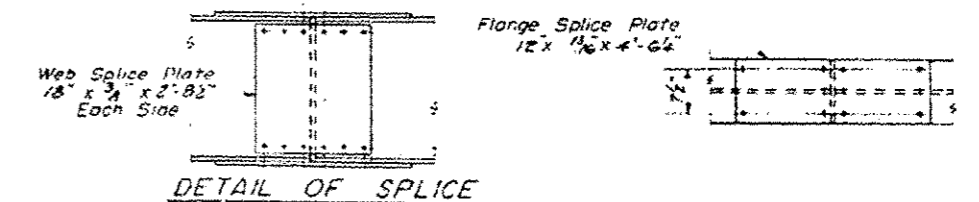
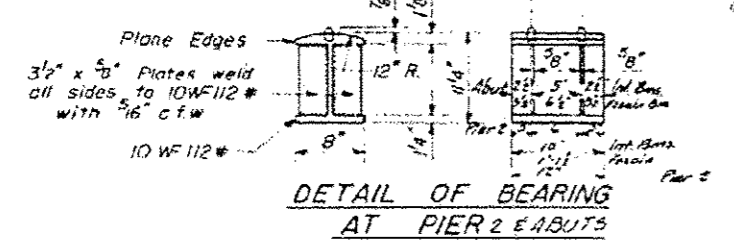
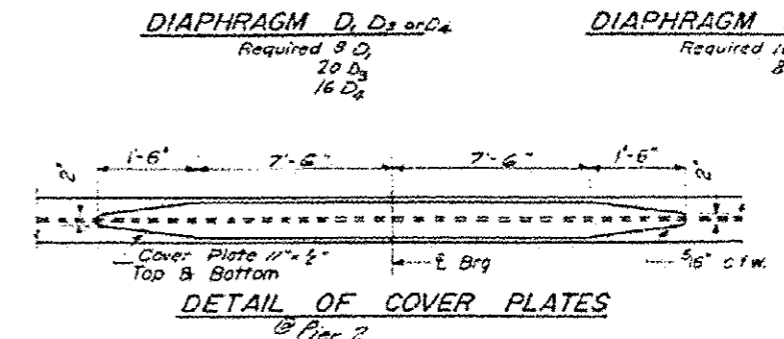
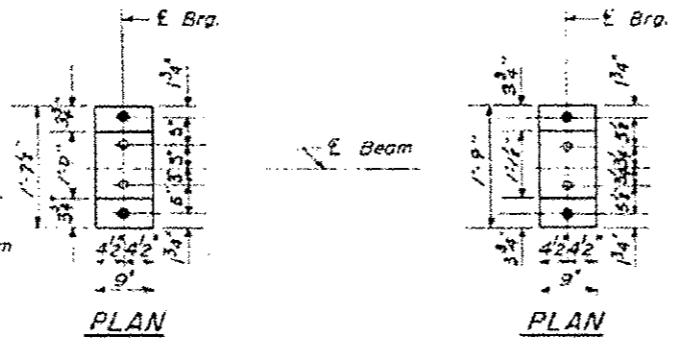
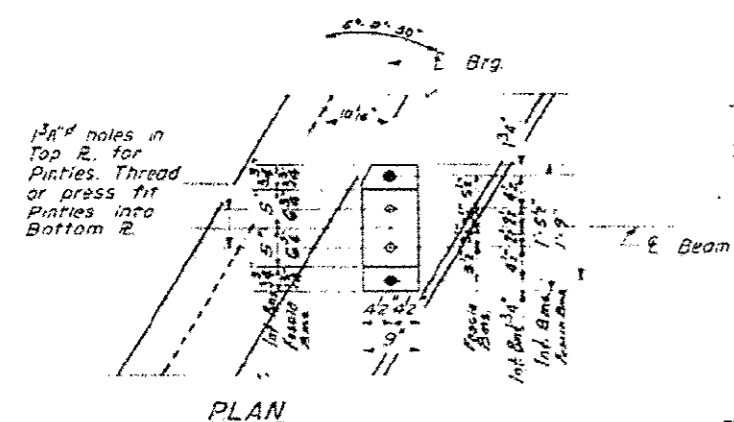
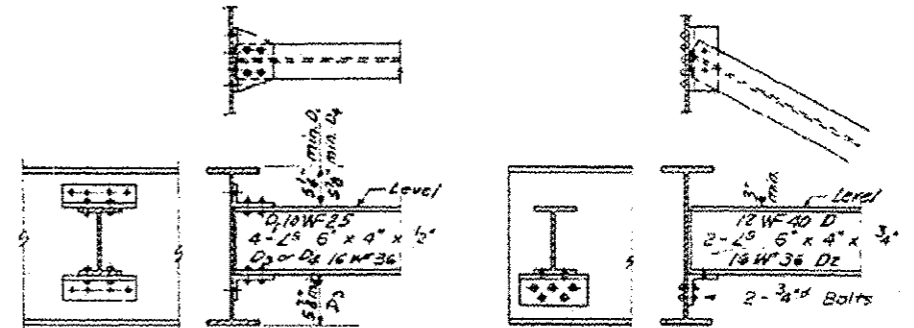
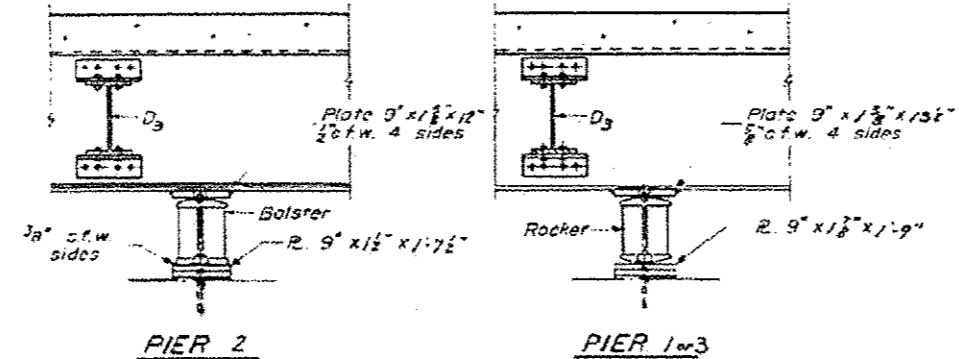
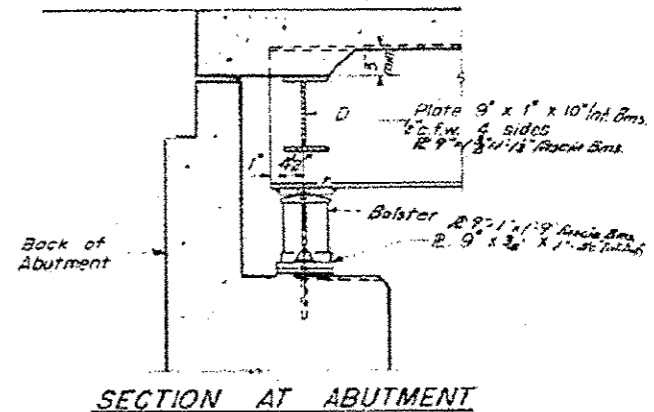
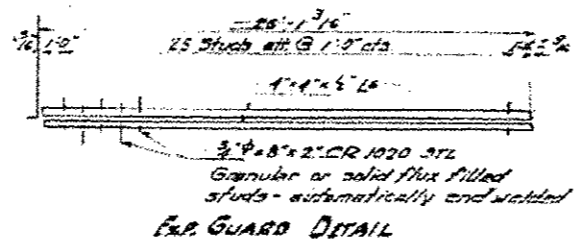
FOR INFORMATION ONLY

FILE NAME =	USER NAME = gautneyrk	DESIGNED -	REVISD -	STATE OF ILLINOIS DEPARTMENT OF TRANSPORTATION	SN 100-0053 STIRITZ RD. OVER I-57	FAI	SECTION	COUNTY	TOTAL SHEETS	SHEET NO.	
o:\work\p\p\dot\gautneyrk\10319066\7841-eh-trip\plan.dgn	PLOT SCALE = 48,0000' / 1" / 1/4"	DRAWN -	REVISD -			57	D9 BRIDGE PAINT 2013-1		23	20.	
#MODELNAME#	PLOT DATE = 3/11/2013	CHECKED -	REVISD -			SCALE: _____ SHEET _____ OF _____ SHEETS STA. _____ TO STA. _____		CONTRACT NO. 78355			
		DATE -	REVISD -			ILLINOIS FED. AID PROJECT					



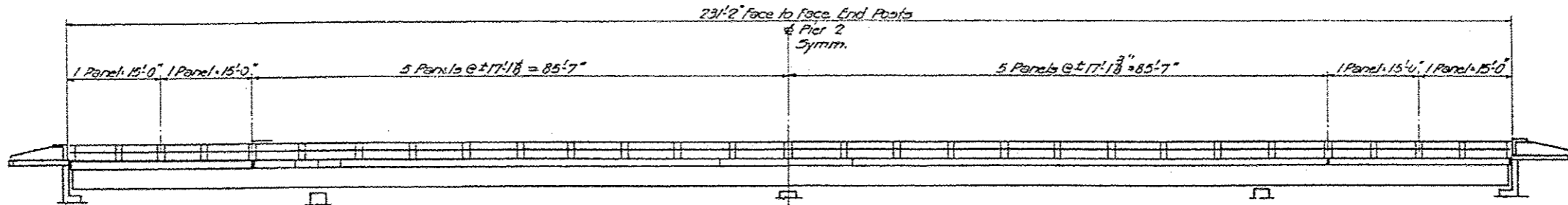
**FOR INFORMATION ONLY**

FILE NAME =	USER NAME = gautneyrk	DESIGNED -	REVISED -	<b>STATE OF ILLINOIS DEPARTMENT OF TRANSPORTATION</b>	SN 100-0053 STIRITZ RD. OVER I-57	FAI	SECTION	COUNTY	TOTAL SHEETS	SHEET NO.	
o:\pvc\work\pav\dot\gautneyrk\10319666\78	41-ahr-elanidgn	DRAWN -	REVISED -			57	D9 BRIDGE PAINT 2013-1	*	23	24	
*MODELNAME*	PLOT DATE = 3/11/2013	CHECKED -	REVISED -			<b>CONTRACT NO. 78395</b>					
		DATE -	REVISED -			ILLINOIS FED. AID PROJECT					

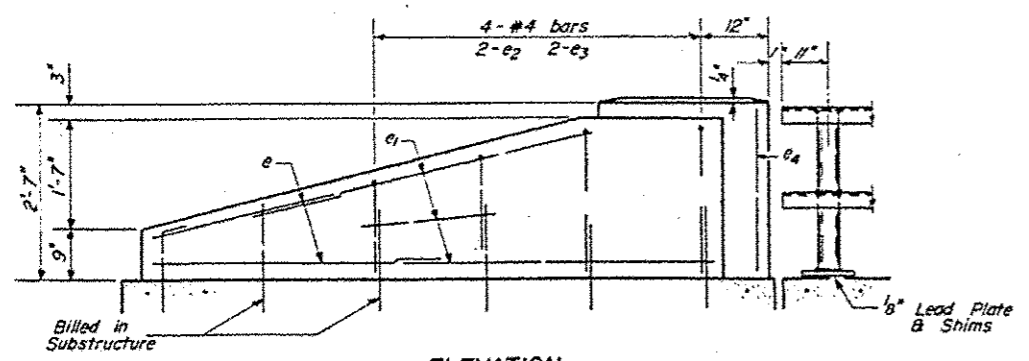


**FOR INFORMATION ONLY**

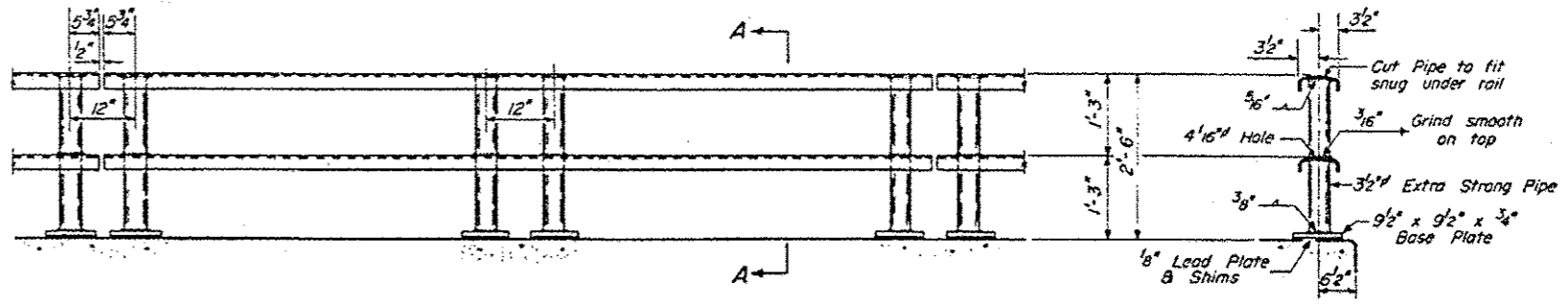
FILE NAME #	USER NAME # gautnyrk	DESIGNED -	REVISED -	<b>STATE OF ILLINOIS DEPARTMENT OF TRANSPORTATION</b>	SN 100-0053 STIRITZ RD. OVER I-57	FBI	SECTION	COUNTY	TOTAL SHEETS	SHEET NO.	
o:\p\work\p\dot\gautnyrk\0319666\78	41-shr-plot.dgn	DRAWN -	REVISED -			57	D9 BRIDGE PAINT 2013-1		23	22.	
MODEL NAME #	PLOT SCALE = 40.0000 1/4" = 1'	CHECKED -	REVISED -			<b>CONTRACT NO. 78355</b>					
	PLOT DATE = 5/11/2013	DATE -	REVISED -			ILLINOIS FED. AID PROJECT					



ELEVATION

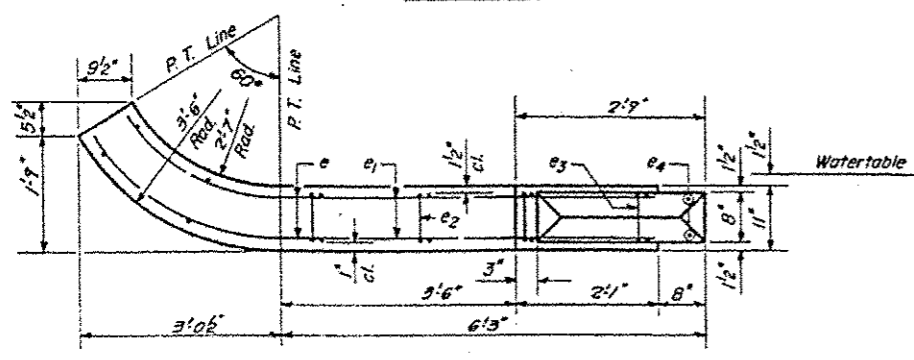


ELEVATION

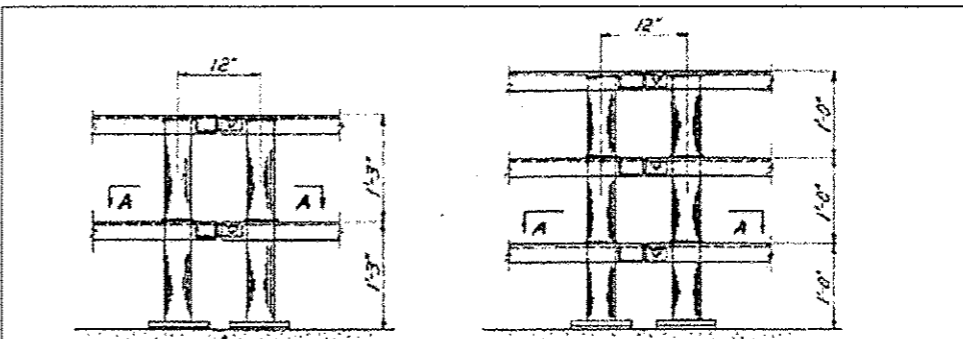


ELEVATION TYPICAL PANEL

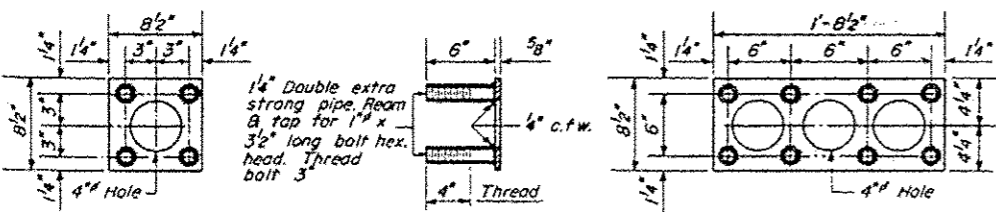
SECTION A-A



PLAN - END POST

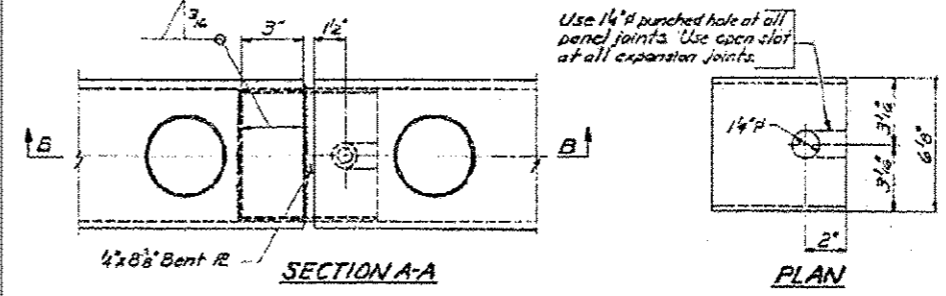


TYPICAL ELEVATION AT PANEL JOINTS



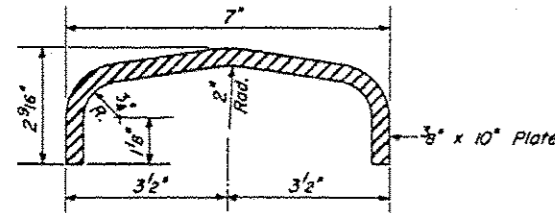
ANCHOR DEVICE At Single Post

ANCHOR DEVICE At Double Post

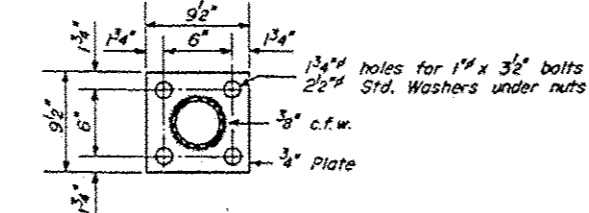


SECTION A-A

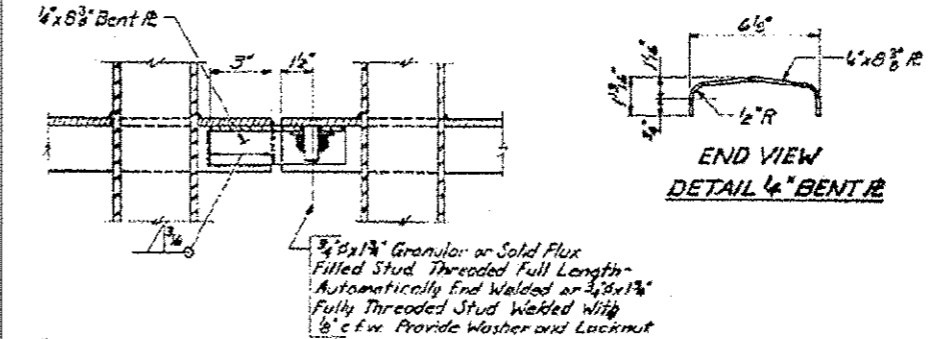
PLAN



DETAIL OF RAIL



BASE PLATE ALL POSTS - SUPERSTRUCTURE



SECTION B-B

FOR INFORMATION ONLY

FILE NAME =	USER NAME = gautneyrk	DESIGNED -	REVISED -
0:\work\psdot\gautneyrk\03119666\7831-1-1-plan.dgn		DRAWN -	REVISED -
PLOT SCALE = 40,0000 / 1/16"		CHECKED -	REVISED -
PLOT DATE = 3/11/2013		DATE -	REVISED -

STATE OF ILLINOIS  
DEPARTMENT OF TRANSPORTATION

SN 100-0053  
STIRITZ RD. OVER I-57

FILE	SECTION	COUNTY	TOTAL SHEETS	SHEET NO.
57	DS BRIDGE PAINT 2013-1		23	23
				CONTRACT NO. 78355
ILLINOIS FED. AID PROJECT				