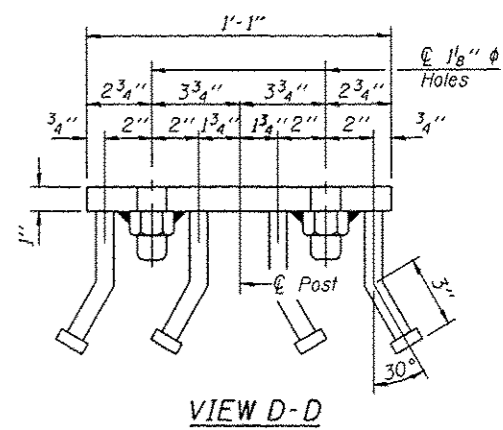
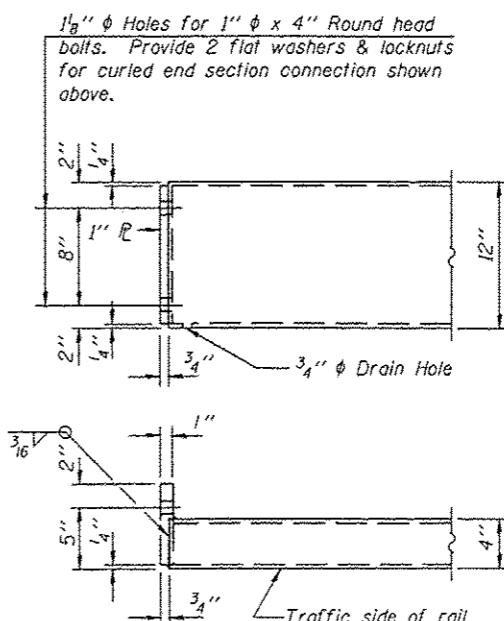
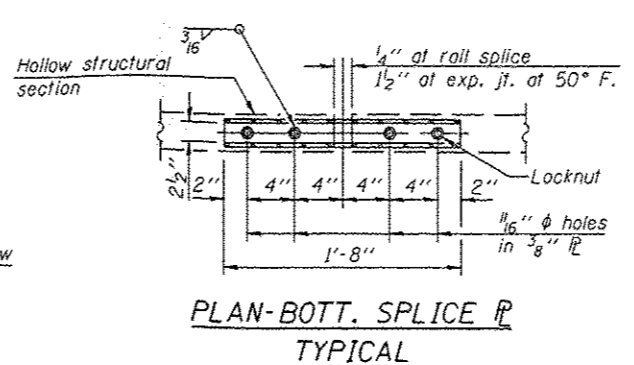
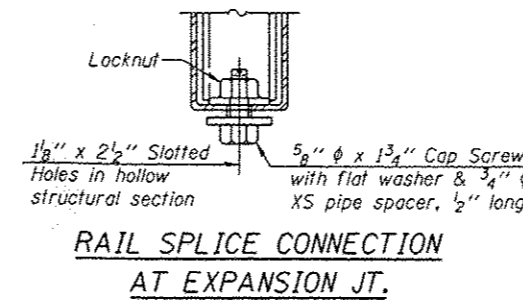
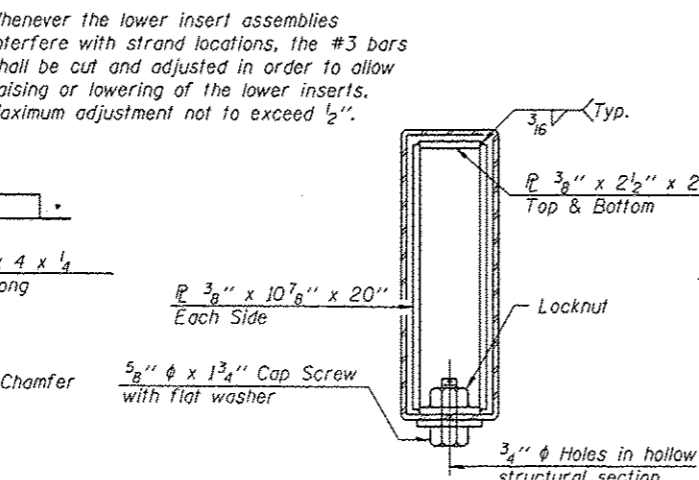
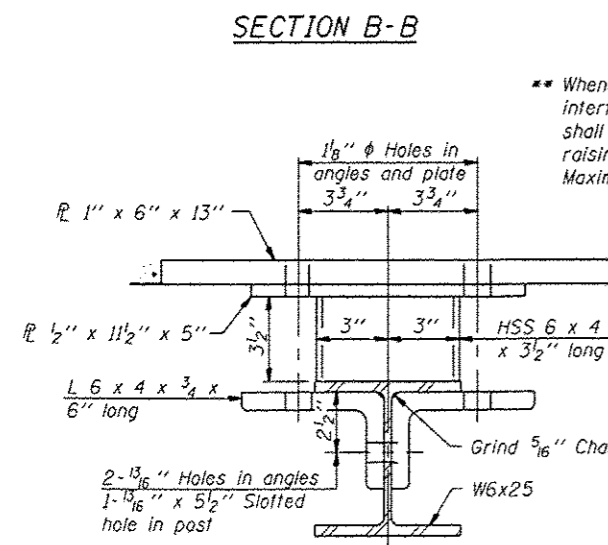


**Notes:**  
 All field drilled holes shall be coated with an approved zinc rich paint before erection.  
 For multi-span bridges, sufficient 1/4" x 6" x 1'-2" galvanized steel shims shall be provided to align rail between adjacent spans. Cost included with Steel Railing, Type S1.  
 All steel rail elements shall be galvanized according to Article 509.05 of the Standard Specifications.  
 \*\*\* The studs of the anchor devices shall be placed below the top reinforcement bars and the outermost longitudinal reinforcement bar shall be placed directly above the studs of the rail post anchor device.



**BILL OF MATERIAL**

Item	Unit	Quantity
Steel Railing, Type S1	Foot	160

(10'-9" Maximum Post Spacing)

FILE NAME * E:\03400-004-Railing.dgn	USER NAME * bosvanson	DESIGNED - LVM	REVISOR
MAURER-STUTZ ENGINEERS SURVEYORS	PLOT SCALE *	CHECKED - BAS	REVISED
PLOT DATE * 6/26/2012 9:15:56 AM		DRAWN - SGM	REVISED
		CHECKED - BAS	REVISED

**KNOX COUNTY  
HIGHWAY DEPARTMENT**

**STEEL RAILING, TYPE S1  
STRUCTURE NO. 048-3400**

SHEET NO. 4 OF 8 SHEETS

T.R. RTE.	SECTION	COUNTY	TOTAL SHEETS	SHEET NO.
244	11-21121-00-BR	KNOX	14	7

ILLINOIS FED. AID PROJECT