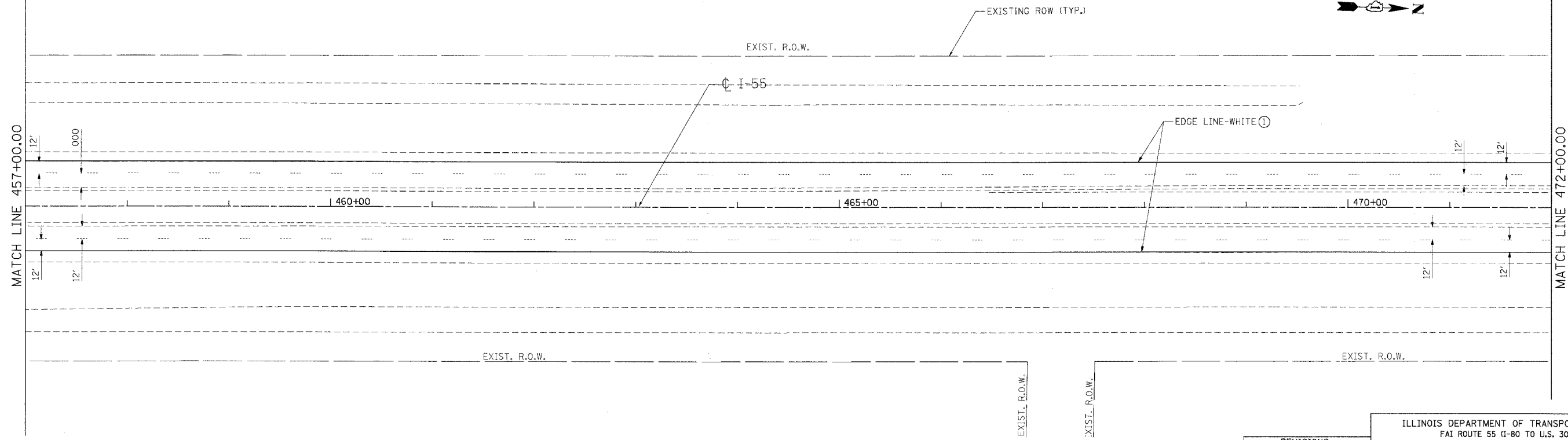
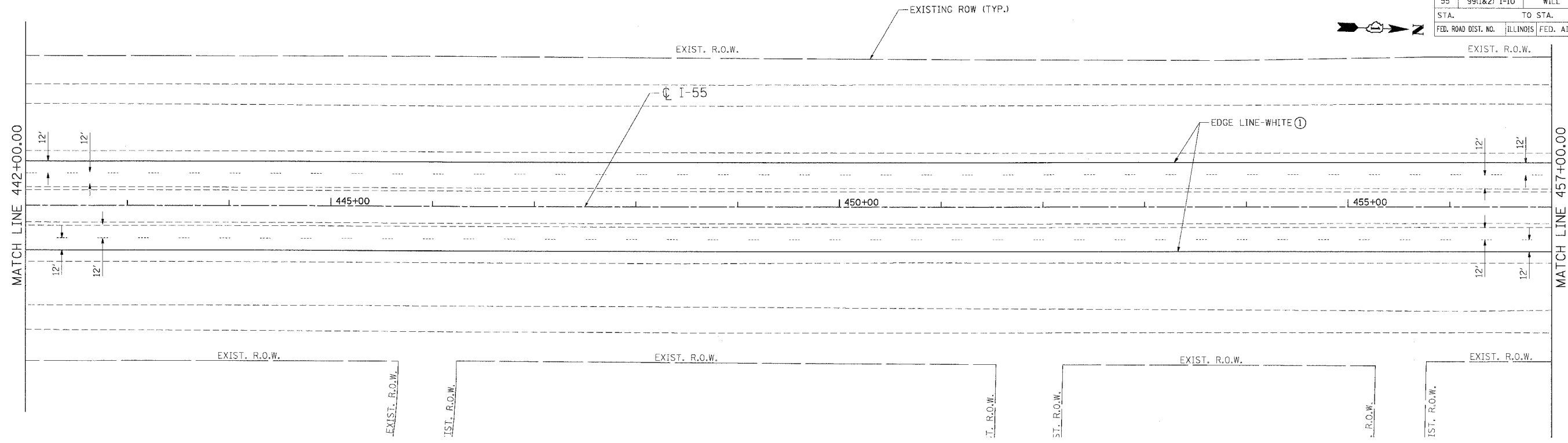


F.A.I. RTE.	SECTION	COUNTY	TOTAL SHEETS	SHEET NO.
55	99(1&2) I-10	WILL	52	43
STA.		TO STA.		
FED. ROAD DIST. NO.		ILLINOIS	FED. AID PROJECT	



LEGEND

- ① EPOXY PAVEMENT MARKING - LINE 4"
- ② EPOXY PAVEMENT MARKING - LINE 5"
- ③ EPOXY PAVEMENT MARKING - LINE 6"
- ④ EPOXY PAVEMENT MARKING - LINE 12"

REVISIONS	
NAME	DATE

ILLINOIS DEPARTMENT OF TRANSPORTATION
 FAI ROUTE 55 (I-80 TO U.S. 30)
 SHOULDER MILLING AND RESURFACING

**PAVEMENT MARKING
 FAI 55
 STA. 442+00.00 TO STA. 472+00.00**

SCALE: 1"=50' DRAWN BY MW
 DATE 03/15/06 CHECKED BY DDH

TENG TENG & ASSOCIATES, INC.
 ENGINEERS/ARCHITECTS/PLANNERS
 CHICAGO, ILLINOIS

PLOT DATE = 03/15/06
 FILE NAME = 031506.DWG
 PLOT SCALE = 1/8"=1'-0"
 USER NAME = DDH