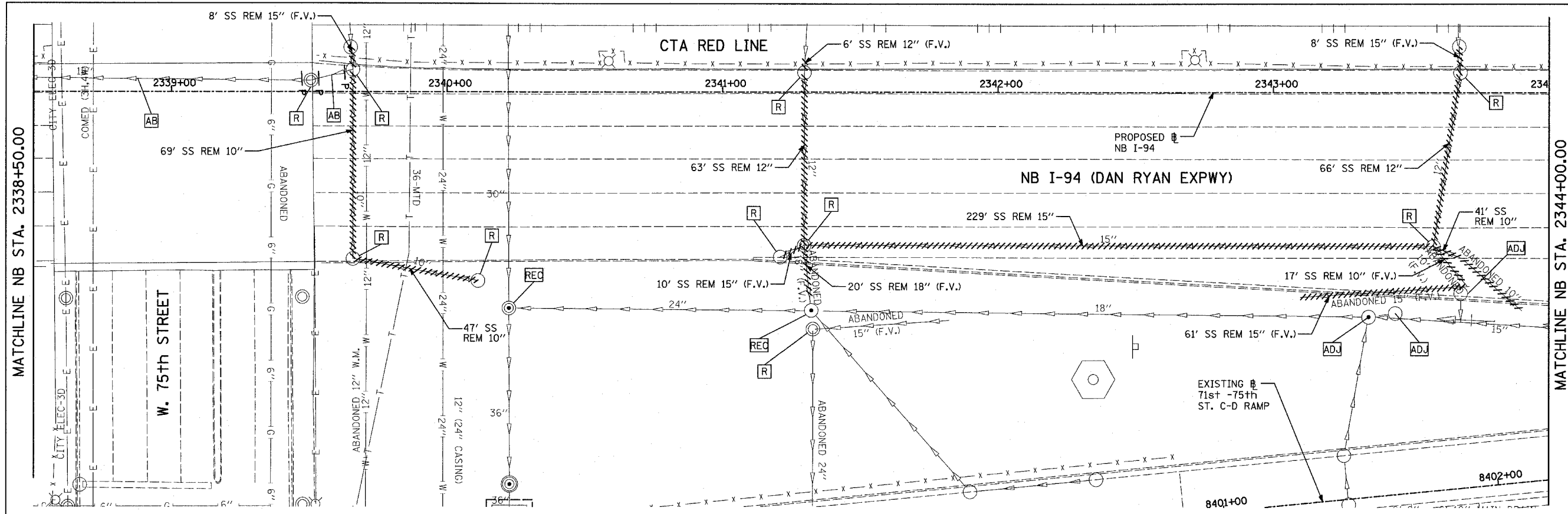
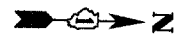
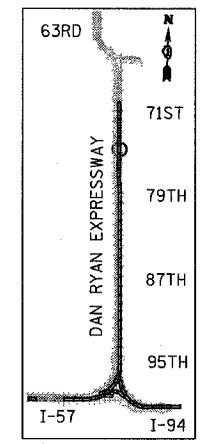
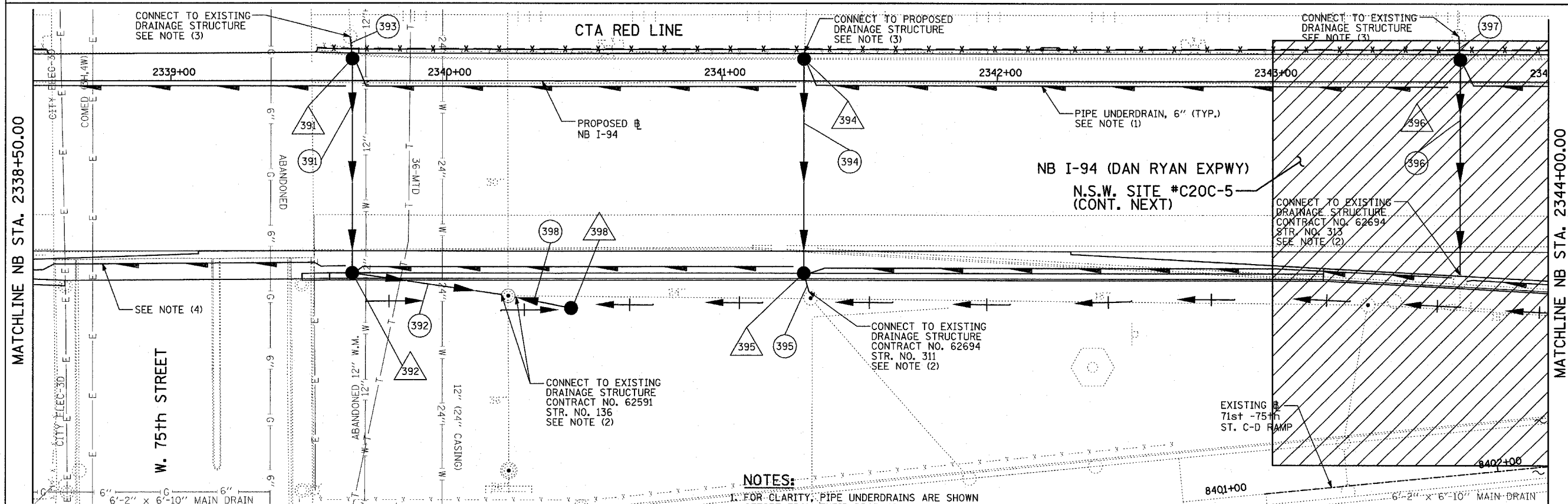
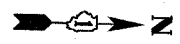


F.A.I. RTE.	SECTION	COUNTY	TOTAL SHEETS	SHEET NO.
94	1818 R-3	COOK	265	113
STA. 2316+00		TO STA. 2367+00		
FED. ROAD DIST. NO.		ILLINOIS FED. AID PROJECT		

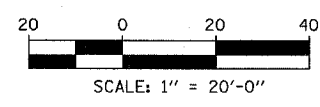
60B17



EXISTING CONDITIONS
PROPOSED IMPROVEMENTS



LOCATION MAP



MATCHLINE NB STA. 2338+50.00

MATCHLINE NB STA. 2344+00.00

TYL INTERNATIONAL

LEGEND:

	EXISTING COMBINED SEWER		SEWER PLUG
	PROPOSED STORM SEWER NUMBER (X=SHEET NO., Y=PIPE NO.)		F.V. FIELD VERIFY
	PROPOSED STRUCTURE NUMBER (X=SHEET NO., Y=STRUCTURE NO.)		UTILITY REMOVAL
	PIPE STUBOUT TO BE PLUGGED		

- NOTES:**
- FOR CLARITY, PIPE UNDERDRAINS ARE SHOWN OFFSET FROM THEIR PROPOSED LOCATIONS. FOR DETAILED PLACEMENT, SEE SHEET "PIPE UNDERDRAINS DETAIL."
 - CORE DRILL AND CONNECT TO EXISTING DRAINAGE STRUCTURE. CONNECTION COST SHALL BE INCLUDED IN THE COST TO CONSTRUCT THE STORM SEWER.
 - ALL CONNECTIONS TO EXISTING SEWER OR STRUCTURE ALONG CTA SHALL BE FIELD VERIFIED PRIOR TO INSTALLATION AND COORDINATED WITH CTA CONSTRUCTION. COST SHALL BE INCLUDED IN THE COST TO CONSTRUCT THE DRAINAGE STRUCTURE.
 - PROPOSED PIPE UNDERDRAIN SYSTEM LOCATION SHALL BE COORDINATED WITH PROPOSED ELECTRICAL DUCT BANK AND EXISTING FOOTING. SEE TYPICAL SECTIONS AND DETAILS FOR OVERPASS FOOTINGS.

NSW - NON SPECIAL WASTE SITES ADDED TO SHEET

REVISIONS	
NAME	DATE

SHEET 39 OF 59
ADDENDUM 1 - NSW 05/08/06

ILLINOIS DEPARTMENT OF TRANSPORTATION
F.A.I. 94 (DAN RYAN EXPRESSWAY)
DRAINAGE AND UTILITY PLAN
NB I-94 (DAN RYAN EXPRESSWAY)
NB I-94 STA. 2338+50.00 TO 2344+00.00

SCALE: 1"=20'
DATE: MARCH 7, 2006

DRAWN BY: MB
CHECKED BY: DA