

DRAINAGE STRUCTURE SCHEDULE

STRUCTURE NUMBER	STATION	OFFSET	STRUCTURE TYPE		DIA.	FRAME & LID	TOP OF FRAME	N INV.	E INV.	S INV.	W INV.
			MH	CB							
413	2354+99.58	10.0 LT		A(7)	4'	T20 F&G	1.20		-4.23		
421	2356+99.57	10.0 LT		A(7)	4'	T20 F&G	0.08		-5.83		
422	2358+81.10	10.0 LT		A(7)	4'	T20 F&G	-1.37	-7.85	-7.85		
423	2358+83.84	82.3 RT		A	4'	T20 F&G	-1.91		-8.22		-8.22
424	2357+94.72	84.1 RT		A	4'	T20 F&G	-1.24		-7.84		
431	2360+97.79	10.0 LT		A(7)	4'	T20 F&G	-3.66		-10.76		
432	2360+97.79	80.0 RT		A	4'	T20 F&G	-4.19	-11.12			-11.12
433	2363+07.29	10.0 LT		A(7)	4'	T20 F&G	-6.24		-13.34		
434	2363+05.92	80.0 RT		A	4'	T20 F&G	-6.75		-13.70		-13.70
435	2362+99.24	85.6 RT	A		5'	T1F CL	-6.83	-17.79	-13.57	-18.29	-13.73
436	2364+77.04	85.6 RT	A		4'	T1F CL	-8.68			-17.10	-15.90
437	2364+82.96	10.0 LT		A(7)	4'	T20 F&G	-8.41		-15.51		-15.51
438	2364+82.95	80.0 RT		A	4'	T20 F&G	-8.90			-15.87	-15.87
439	NOT USED	-	-	-	-	-	-	-	-	-	-
4310	2363+03.44	91.7 RT		C	2'	T1F OL	-7.05				-13.55
441	2336+25.09	10.0 LT		A(7)	4'	T20 F&G	-9.57		-16.67		
442	2336+25.09	80.0 RT		A	4'	T20 F&G	-10.10	-17.03			-17.03
443	NOT USED	-	-	-	-	-	-	-	-	-	-
444	2367+38.58	104.8 RT	A		4'	T1F CL	-2.37			-17.53	-17.53
445	2366+91.87	10.0 LT		A(7)	4'	T20 F&G	-9.67	-15.58		-15.58	
446	2366+71.87	10.0 LT		A(7)	4'	T20 F&G	-9.67	-15.52			
447	2366+81.87	10.0 LT		A(7)	4'	T20 F&G	-9.67	-15.55		-15.55	

STORM SEWER SCHEDULE

PIPE NUMBER	UPSTREAM STATION	DOWNSTREAM STATION	TYPE	DIA. (IN)	LENGTH (FT)	SLOPE %	T.B. (CU.YD)
412	2351+87.69	2351+96.03	2	15	74	0.44	14.1
413	2354+99.58	2354+98.02	2	15	73	0.44	7.2
421	2356+99.57	2356+93.25	2	15	71	0.44	11.9
422	2358+81.10	2358+83.84	2	15	85	0.44	18.1
423	2358+83.84	2358+88.06	2	15	3	0.44	0.6
424	2358+88.83	2358+81.10	2	15	9	0.44	1.7
431	2360+97.79	2360+97.79	2	15	82	0.44	23.1
432	2360+97.79	2361+18.01	2	15	17	0.44	4.4
433	2363+07.29	2363+05.92	2	15	82	0.44	23.1
434	2363+05.92	2362+99.24	2	15	6	0.44	1.6
435	2362+99.24	2361+18.01	3	24	177	0.30	290.4
436	2364+77.04	2362+99.24	2	18	173	0.40	156.0
437	2364+82.96	2364+82.95	2	15	82	0.44	23.1
438	2364+82.95	2364+77.04	2	15	6	0.44	1.7
439	2364+83.16	2364+82.96	2	15	5	0.44	1.1
4310	2363+03.44	2362+99.24	2	12	4	0.44	0
441	2336+25.09	2336+25.09	2	15	82	0.44	23.1
442	2336+25.09	2367+38.58	2	15	113	0.44	20.2
443	NOT USED	-	-	-	-	-	-
444	2367+38.58	2367+38.55	3	15	3	0.44	0
445	2366+91.87	2367+00.00	2	15	7	0.44	1.2
446	2366+71.87	2366+81.87	2	15	6	0.44	0.9
447	2366+81.87	2366+91.87	2	15	6	0.44	0.9

NOTES:

- INDICATES INLET TYPE A, 2' DIAMETER, TYPE 20 FRAME & GRATE.
- INDICATES MANHOLE, TYPE A, 6' DIAMETER, TYPE 1 FRAME, CLOSED LID, RESTRICTOR PLATE.
- INDICATES SEWER LATERAL WITH 45° CONNECTION. SEE SHEET "DETAIL OF STORM SEWER CONNECTIONS TO SEWER."
- INDICATES SEWER LATERAL WITH 30° CONNECTION. SEE SHEET "DETAIL OF STORM SEWER CONNECTIONS TO SEWER."
- INDICATES SEWER LATERAL WITH 60° CONNECTION. SEE SHEET "DETAIL OF STORM SEWER CONNECTIONS TO SEWER."
- INDICATES MANHOLE TYPE A WITH FLAT SLAB TOP, IDOT STANDARD 602601.
- INDICATES CATCH BASIN REQUIRING TEMPORARY SOIL RETENTION SYSTEM WITH INSTALLATION.
- ALL STRUCTURE ELEVATIONS IN RESURFACED AREAS COME FROM AERIAL SURVEY AND SHOULD BE VERIFIED IN THE FIELD AND ADJUSTED TO MATCH EXISTING CONDITIONS.

CASING SIZES

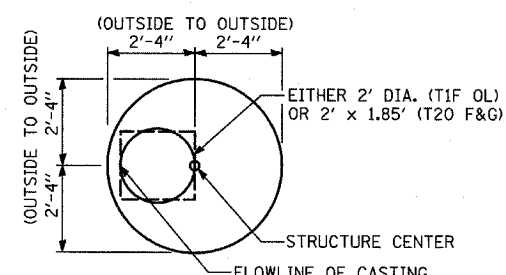
PIPE SIZE	CASING SIZE (OD)*	CASING WALL THICKNESS
12"	30"	0.500"
24"	42"	0.625"
30"	48"	0.688"
36"	48"	0.688"

*ALL STEEL CASING SHALL MEET OR EXCEED ASTM A-139, GRADE B.
SEE THE DRAINAGE & UTILITY PLANS FOR LOCATION OF ALL STRUCTURES.

CATCH BASIN STATIONS ARE MEASURED TO CENTER OF STRUCTURE.

CATCH BASIN OFFSETS ARE MEASURED TO FLOWLINE OF CASING. (SEE BELOW)

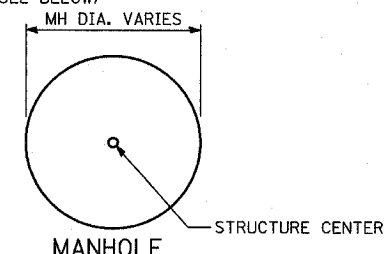
FLOWLINE OF CASING IS LOCATED AT C/ OF STRUCTURE FOR CATCH BASINS LOCATED IN SWALE AND GORE AREAS.



CATCH BASIN

(PRECAST REINFORCED CONCRETE SECTION)

MANHOLE STATIONS AND OFFSETS ARE MEASURED TO CENTER OF STRUCTURE. (SEE BELOW)



MANHOLE

REVISIONS	
NAME	DATE

ILLINOIS DEPARTMENT OF TRANSPORTATION
F.A.I. 94 (DAN RYAN EXPRESSWAY)
DRAINAGE STRUCTURE SCHEDULE