

**INDEX OF SHEETS**

FOR INDEX OF SHEETS, SEE SHEET NO. 2

PROJECT LOCATED IN THE CITY OF CHICAGO

DAN RYAN EXPRESSWAY:	ADT (2010)	DESIGN SPEED	POSTED SPEED
NB I-94 (DAN RYAN)	151,800	60 MPH	55 MPH
NB 79TH STREET C-D ENTRANCE RAMP	9,200	45 MPH	40 MPH
NB 76TH STREET C-D EXIT RAMP	7,200	45 MPH	40 MPH
NB 75TH STREET C-D ENTRANCE RAMP	11,300	45 MPH	40 MPH
NB 71ST STREET C-D EXIT RAMP	6,600	45 MPH	40 MPH

**STATE OF ILLINOIS  
DEPARTMENT OF TRANSPORTATION  
DIVISION OF HIGHWAYS**

**PROPOSED HIGHWAY PLANS**

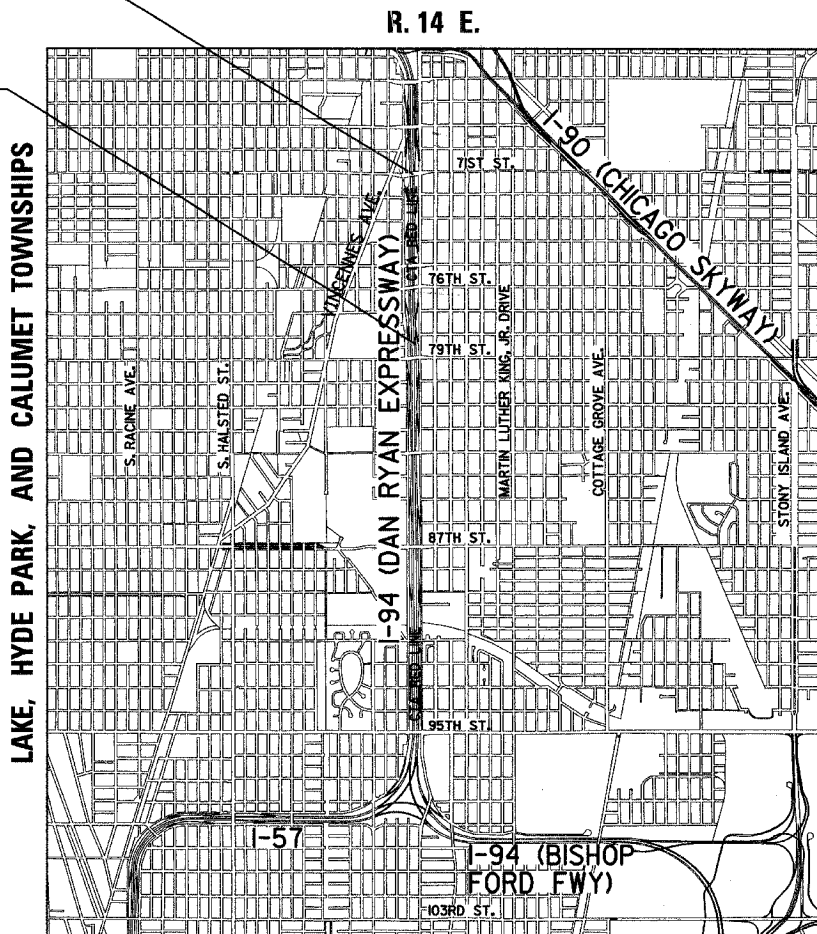
**F.A.I. ROUTE 94 (DAN RYAN EXPRESSWAY)  
SECTION 1818 R-3  
PROJECT NO.: IM-094-3(403)060  
79TH STREET TO 71ST STREET  
NB LANES 1 - 5, SHOULDERS & CTA BARRIER WALL  
COOK COUNTY  
C-91-292-06**

**PROJECT DESCRIPTION**

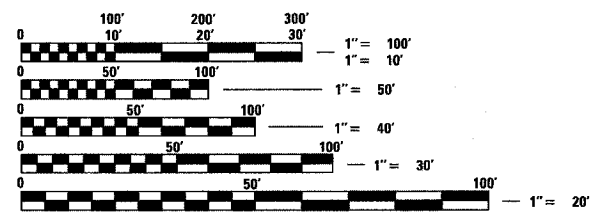
THE PROPOSED IMPROVEMENT CONSISTS OF PAVEMENT AND CTA BARRIER WALL RECONSTRUCTION, WIDENING, RAMP TERMINALS, SHOULDERS, AND DRAINAGE MODIFICATIONS ALONG NB I-94 (DAN RYAN EXPRESSWAY).

F.A.I. 94 PROJECT LIMIT  
STA. 2367+00.00 (NB I-94)

F.A.I. 94 PROJECT LIMIT  
STA. 2316+00.00 (NB I-94)



LAKE, HYDE PARK, AND CALUMET TOWNSHIPS



FULL SIZE PLANS HAVE BEEN PREPARED USING STANDARD ENGINEERING SCALES; REDUCED SIZED PLANS WILL NOT CONFORM TO STANDARD SCALES. IN MAKING MEASUREMENTS ON REDUCED PLANS, THE ABOVE SCALES MAY BE USED

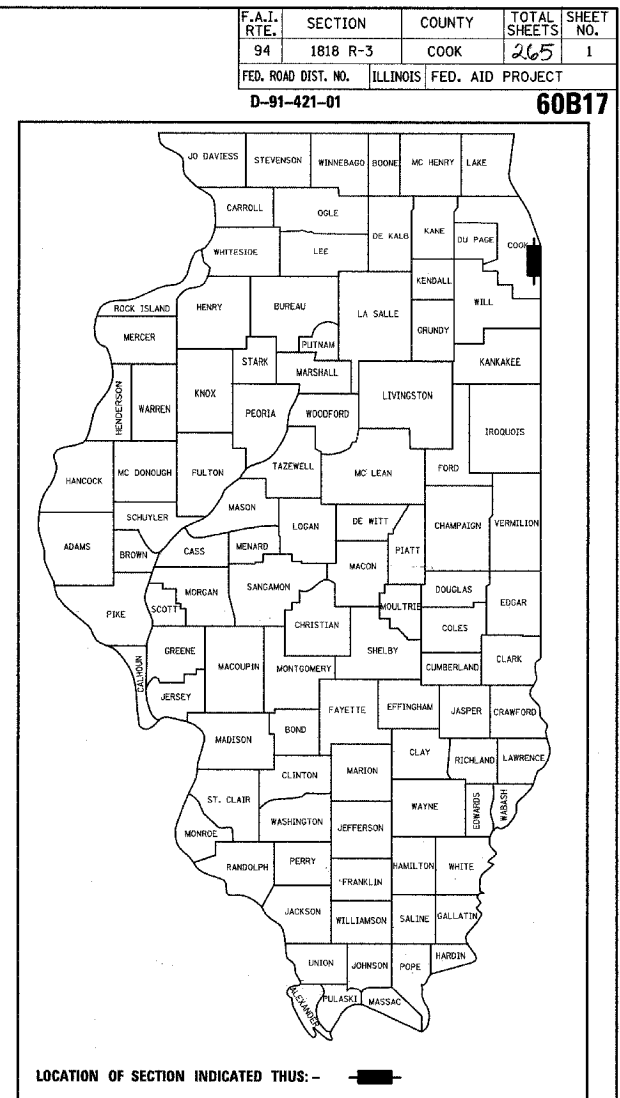
**DIGGER:**  
CHICAGO UTILITY ALERT NETWORK  
(312) 744-7000

**CTA CONTACT:**  
MARVIN A. WATSON,  
GENERAL MANAGER, CONSTRUCTION  
(312) 681-3860

**CONTRACT NO. 60B17**

**LOCATION MAP**

0 1/2 MILE 1 MILE  
GROSS LENGTH OF PROJECT = 5100.0 FT. = 0.966 MI.  
MAP SCALE: 1" = 1/2 MILE  
NET LENGTH OF PROJECT = 5100.0 FT. = 0.966 MI.



**STATE OF ILLINOIS  
DEPARTMENT OF TRANSPORTATION  
DIVISION OF HIGHWAYS**

SUBMITTED March 8, 2006

Diane M. O'Keefe/CAL  
DISTRICT ENGINEER

March 24, 2006  
Mike Sline/ED  
ENGINEER OF DESIGN AND ENVIRONMENT

March 24, 2006  
Milton R. Sees, P.E./ED  
DIRECTOR, DIVISION OF HIGHWAYS

**CONTRACT 20C**

Signed Dean A. Kiesling  
Dean A. Kiesling, P.E., II, Lic. No. 081004825  
Expires 11-30-2007.  
Date March 7, 2006

Signed Phillip D. Frey  
Phillip D. Frey, S.E., II, Lic. No. 081004826  
Expires 11-30-2006.  
Date 3/7/06

Signed Thomas Mikolajewski  
Thomas Mikolajewski, P.E., II, Lic. No. 062-056151  
Expires 11-30-2007.  
Date March 7, 2006

For Electrical Drawings 162-180

For Structural Drawings 187-190

**TYLIN INTERNATIONAL**  
PRINTED BY THE AUTHORITY OF THE STATE OF ILLINOIS

DISTRICT ONE DESIGN / PROJECT MANAGER:  
BRIAN KUTTAB (847) 705 - 4431

Rev. 5-10-06

SUMMARY OF QUANTITIES

CODE NUMBER	ITEM DESCRIPTION	UNIT	TOTAL	URBAN - 90% FEDERAL, 10% STATE			
				DAN RYAN J000-2A	LIGHTING Y030-IE	I.T.S. Y032-IF	STRUCT Y007 PROTECTION SLAB
20100110	TREE REMOVAL (6-15 UNIT DIAMETER)	UNIT	110	110			
20100210	TREE REMOVAL (>15 UNIT DIAMETER)	UNIT	36	36			
20101000	TEMPORARY FENCE	FOOT	821	821			
20200100	EARTH EXCAVATION	CU YD	30,220	32,480			5740
20201200	REMOVAL AND DISPOSAL OF UNSUITABLE MATERIAL	CU YD	1565	1565			
20800150	TRENCH BACKFILL	CU YD	1407	1407			
21001000	GEOTECHNICAL FABRIC FOR GROUND STABILIZATION	SQ YD	49,519	41,580			7933
* 21101615	TOPSOIL FURNISH AND PLACE, 4"	SQ YD	6428	6428			
* 21101630	TOPSOIL FURNISH AND PLACE, 8"	SQ YD	576	576			
* 21101645	TOPSOIL FURNISH AND PLACE, 12"	SQ YD	2740	2740			
* 21101825	COMPOST FURNISH AND PLACE, 6"	SQ YD	2847	2847			
* 25000210	SEEDING, CLASS 2A	ACRE	1.50	1.50			
* 25000400	NITROGEN FERTILIZER NUTRIENT	POUND	146	146			
* 25000500	PHOSPHORUS FERTILIZER NUTRIENT	POUND	145	145			
* 25000600	POTASSIUM FERTILIZER NUTRIENT	POUND	145	145			
⊙ 25000750	MOWING	ACRE	6.00	6.00			
* 25001800	SEEDING, CLASS 4 (MODIFIED)	ACRE	0.75	0.75			
25100630	EROSION CONTROL BLANKET	SQ YD	9637	9637			
* 25200200	SUPPLEMENTAL WATERING	UNIT	510	510			
* 28000250	TEMPORARY EROSION CONTROL SEEDINGS	POUND	200	200			
28000300	TEMPORARY DITCH CHECKS	EACH	10	10			
* 28000510	INLET FILTERS	EACH	13	13			
31101860	SUB-BASE GRANULAR MATERIAL, TYPE B 24"	SQ YD	50653	42,720			7933
42001300	PROTECTIVE COAT	SQ YD	52734	52734			
42100380	CONTINUOUSLY REINFORCED PORTLAND CEMENT CONCRETE PAVEMENT 14"	SQ YD	37837	29,904			7933
44000004	BITUMINOUS SURFACE REMOVAL 1"	SQ YD	6800	6800			
44000006	BITUMINOUS SURFACE REMOVAL 1 1/2"	SQ YD	155	155			

- \* - SPECIALTY ITEM
- - IDOT PAY CODE SFTY-3N
- △ - IDOT PAY CODE Y080
- ⊙ - NON-PARTICIPATING

TYLIN INTERNATIONAL

REVISIONS	
NAME	DATE

ILLINOIS DEPARTMENT OF TRANSPORTATION  
F.A.I. 94 (DAN RYAN EXPRESSWAY)

SUMMARY OF QUANTITIES  
SHEET 1 OF 6

SCALE: NONE  
DATE: MARCH 7, 2006  
DRAWN BY: RTM  
CHECKED BY: MPG

Rev. 5-10-06

SUMMARY OF QUANTITIES

CODE NUMBER	ITEM DESCRIPTION	UNIT	TOTAL	URBAN - 90% FEDERAL, 10% STATE				
				IM DAN RYAN J000-2A	IM LIGHTING Y030-1E	IM I.T.S. Y032-1F	NHE 80% FED. 20% STATE J000-2A	IM STRUCT Y007 PROTECTION SLAB
44000100	PAVEMENT REMOVAL	SQ YD	36828	36828				
44000500	COMBINATION CURB AND GUTTER REMOVAL	FOOT	3446	3446				
44001980	CONCRETE BARRIER REMOVAL	FOOT	491	491				
44004250	PAVED SHOULDER REMOVAL	SQ YD	7809	4844			2965	
44004260	PAVED SHOULDER REMOVAL (SPECIAL)	SQ YD	172	172				
44004400	PAVEMENT REMOVAL (SPECIAL)	SQ YD	1024	1024				
50200100	STRUCTURE EXCAVATION	CU YD	234					234
50300225	CONCRETE STRUCTURES	CU YD	135					135
50800205	REINFORCEMENT BARS, EPOXY COATED	POUND	29970					29970
550A0340	STORM SEWERS, CLASS A, TYPE 2, 12"	FOOT	54	54				
550A0360	STORM SEWERS, CLASS A, TYPE 2, 15"	FOOT	2403	2403				
550A0380	STORM SEWERS, CLASS A, TYPE 2, 18"	FOOT	407	407				
550A0660	STORM SEWERS, CLASS A, TYPE 3, 15"	FOOT	3	3				
550A0710	STORM SEWERS, CLASS A, TYPE 3, 24"	FOOT	177	177				
55100400	STORM SEWER REMOVAL 10"	FOOT	462	462				
55100500	STORM SEWER REMOVAL 12"	FOOT	2006	2006				
55100700	STORM SEWER REMOVAL 15"	FOOT	616	616				
55100900	STORM SEWER REMOVAL 18"	FOOT	494	494				
55101200	STORM SEWER REMOVAL 24"	FOOT	183	183				
60107700	PIPE UNDERDRAINS 6"	FOOT	9336	9336				
60108200	PIPE UNDERDRAINS 6" (SPECIAL)	FOOT	214	214				
60200105	CATCH BASINS, TYPE A, 4'-DIAMETER, TYPE 1 FRAME, OPEN LID	EACH	2	2				
60201310	CATCH BASINS, TYPE A, 4'-DIAMETER, TYPE 20 FRAME AND GRATE	EACH	54	54				
60206905	CATCH BASINS, TYPE C, TYPE 1 FRAME, OPEN LID	EACH	3	3				
60218400	MANHOLES, TYPE A, 4'-DIAMETER, TYPE 1 FRAME, CLOSED LID	EACH	4	4				
60221100	MANHOLES, TYPE A, 5'-DIAMETER, TYPE 1 FRAME, CLOSED LID	EACH	1	1				
60223700	MANHOLES, TYPE A, 6'-DIAMETER, TYPE 1 FRAME, CLOSED LID	EACH	1	1				

- \* - SPECIALTY ITEM
- - IDOT PAY CODE SFTY-3N
- △ - IDOT PAY CODE Y080
- ⊙ - NON-PARTICIPATING

TYLIN INTERNATIONAL

REVISIONS	
NAME	DATE

ILLINOIS DEPARTMENT OF TRANSPORTATION  
F.A.I. 94 (DAN RYAN EXPRESSWAY)

SUMMARY OF QUANTITIES  
SHEET 2 OF 6

SCALE: NONE  
DATE: MARCH 7, 2006  
DRAWN BY: RTM  
CHECKED BY: MPG

Rev. 5-10-06

SUMMARY OF QUANTITIES

CODE NUMBER	ITEM DESCRIPTION	UNIT	TOTAL	URBAN - 90% FEDERAL, 10% STATE				
				DAN RYAN J000-2A	LIGHTING Y030-1E	I.T.S. Y032-1F	SIGNING Y002-1C	STRUCT Y007 PROTECTION SLAB
60250200	CATCH BASINS TO BE ADJUSTED	EACH	24	24				
60255500	MANHOLES TO BE ADJUSTED	EACH	24	24	△			
60257900	MANHOLES TO BE RECONSTRUCTED	EACH	3	3				
60500040	REMOVING MANHOLES	EACH	31	31	△			
60500050	REMOVING CATCH BASINS	EACH	60	60				
60500060	REMOVING INLETS	EACH	3	3				
60608521	COMBINATION CONCRETE CURB AND GUTTER, TYPE M-2.24	FOOT	56.5	56.5				
60618324	CONCRETE MEDIAN SURFACE, 6 INCH (SPECIAL)	SQ FT	1121	1121				
* 63100085	TRAFFIC BARRIER TERMINAL, TYPE 6	EACH	2	2				
* 63100167	TRAFFIC BARRIER TERMINAL, TYPE 1, SPECIAL (TANGENT)	EACH	2	2				
63700805	CONCRETE BARRIER TRANSITION	FOOT	196	196				
64200105	SHOULDER RUMBLE STRIPS	FOOT	8643	8643				
* 66400560	CHAIN LINK FENCE, 6' (SPECIAL)	FOOT	5100	5100				
* 66402900	CHAIN LINK GATE, 6' x 6' SINGLE	EACH	6	6				
66410300	CHAIN LINK FENCE REMOVAL	FOOT	62	62				
* 66900200	NON-SPECIAL WASTE DISPOSAL	CU YD	13,670	13,670	△			
* 66900450	SPECIAL WASTE PLANS AND REPORTS	L SUM	1	1				
* 66900530	SOIL DISPOSAL ANALYSIS	EACH	2	2	△			
67100100	MOBILIZATION	L SUM	1	1				
70300240	TEMPORARY PAVEMENT MARKING - LINE 6"	FOOT	11000	11000				
70300520	PAVEMENT MARKING TAPE, TYPE III 4"	FOOT	13845	13845				
70300530	PAVEMENT MARKING TAPE, TYPE III 5"	FOOT	2552	2552				
70300550	PAVEMENT MARKING TAPE, TYPE III 8"	FOOT	2330	2330				
70300560	PAVEMENT MARKING TAPE, TYPE III 12"	FOOT	35	35				
70301000	WORK ZONE PAVEMENT MARKING REMOVAL	SQ FT	20293	20293				
70400100	TEMPORARY CONCRETE BARRIER	FOOT	5900	5900				
70400200	RELOCATE TEMPORARY CONCRETE BARRIER	FOOT	12940	12940				

- \* - SPECIALTY ITEM
- - IDOT PAY CODE SFTY-3N
- △ - IDOT PAY CODE Y080
- ⊙ - NON-PARTICIPATING

TYLIN INTERNATIONAL

△ Rev. 5-10-06

REVISIONS	
NAME	DATE

ILLINOIS DEPARTMENT OF TRANSPORTATION  
F.A.I. 94 (DAN RYAN EXPRESSWAY)

SUMMARY OF QUANTITIES  
SHEET 3 OF 6

SCALE: NONE  
DATE: MARCH 7, 2006  
DRAWN BY: RTM  
CHECKED BY: MPG

**SUMMARY OF QUANTITIES**

CODE NUMBER	ITEM DESCRIPTION	UNIT	TOTAL	URBAN - 90% FEDERAL 10% STATE				
				IM DAN RYAN J000-2A	IM LIGHTING Y030-1E	IM I.T.S. Y032-1F	IM NHF 80% FED. 20% STATE J000-2A	IM STRUCT Y007 PROTECTION SLAB
* X7013820	TRAFFIC CONTROL SURVEILLANCE, EXPRESSWAYS	CAL DA	457	457				
* X7015000	CHANGEABLE MESSAGE SIGN	CAL MO	64	64				
XX001854	STABILIZED SUB-BASE, 6"	SQ YD	50,190	42,257			7,933	
XX004201	PAVEMENT REINFORCEMENT, 14"	SQ YD	37,837	29,904			7,933	
Z0002400	BALLAST	TON	1095	1095				
Z0013798	CONSTRUCTION LAYOUT	L SUM	1	1				
Z0013825	CONTROLLED LOW STRENGTH MATERIAL	CU YD	195	195				
* □ Z0030250	IMPACT ATTENUATORS, TEMPORARY (NON-REDIRECTIVE), TEST LEVEL 3	EACH	4	4				
* □ Z0030350	IMPACT ATTENUATORS, RELOCATE (NON-REDIRECTIVE), TEST LEVEL 3	EACH	8	8				
* Z0048665	RAILROAD PROTECTIVE LIABILITY INSURANCE	L SUM	1	1				
△ Z0076600	TRAINEES	HOUR	2000	2000				
△ Z0040530	PIPE UNDERDRAIN REMOVAL	FOOT	10,200	10,200				

- \* - SPECIALTY ITEM
- - IDOT PAY CODE SFTY-3N
- △ - IDOT PAY CODE Y080
- - NON-PARTICIPATING

**TYLIN** INTERNATIONAL

△ Rev. 5-10-06

Rev.

REVISIONS	
NAME	DATE

ILLINOIS DEPARTMENT OF TRANSPORTATION  
F.A.I. 94 (DAN RYAN EXPRESSWAY)

**SUMMARY OF QUANTITIES**  
SHEET 6 OF 6

SCALE: NONE      DRAWN BY: RTM  
DATE: MARCH 7, 2006      CHECKED BY: MPG

3/8/2006 2:03:34 PM

F.A.I. RTE.	SECTION	COUNTY	TOTAL SHEETS	SHEET NO.
94	1818 R-3	COOK	265	13
STA. 2316+00	TO STA. 2367+00			
FED. ROAD DIST. NO.	ILLINOIS	FED. AID PROJECT		

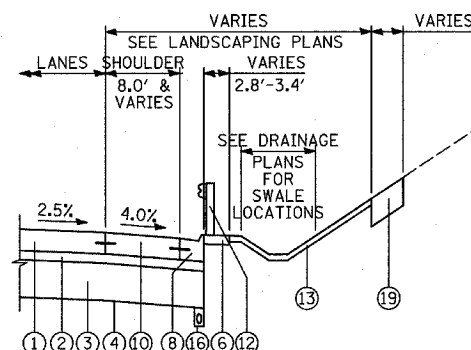
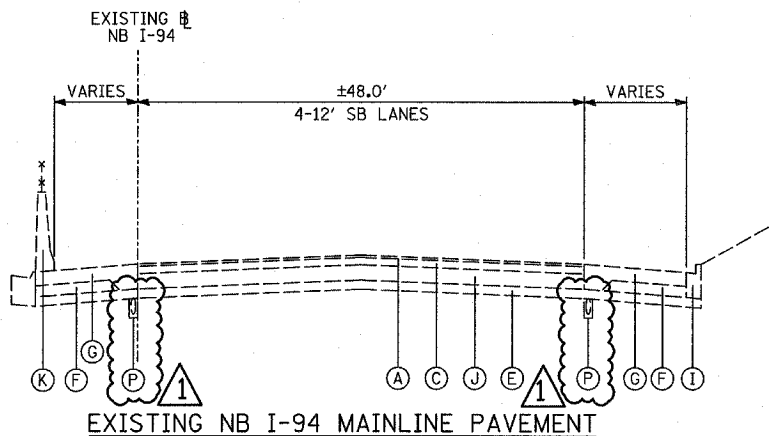
60B17

**PROPOSED LEGEND**

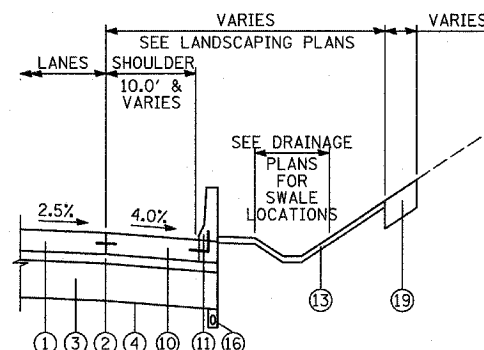
- ① CONTINUOUSLY REINFORCED PORTLAND CEMENT PAVEMENT 14"; & PAVEMENT REINFORCEMENT, 14"
- ② STABILIZED SUB-BASE, 6" (BITUMINOUS AGGREGATE MIXTURE)
- ③ SUB-BASE GRANULAR MATERIAL, TYPE B 24"
- ④ GEOTECHNICAL FABRIC FOR GROUND STABILIZATION
- ⑤ CONCRETE MEDIAN SURFACE, 6 INCH (SPECIAL)
- ⑥ CONCRETE MEDIAN SURFACE, 6 INCH (SPECIAL) (WITHOUT STAMPED PATTERN)
- ⑦ COMBINATION CONCRETE CURB AND GUTTER, TYPE M-2.24
- ⑧ COMBINATION CONCRETE CURB AND GUTTER, TYPE M-4.24
- ⑨ COMBINATION CONCRETE CURB AND GUTTER, TYPE M-4.48
- ⑩ PORTLAND CEMENT CONCRETE SHOULDERS 14"
- ⑪ CONCRETE BARRIER, SINGLE FACE, 32 INCH HEIGHT; BARRIER BASE; BARRIER WALL MARKERS (PER IDOT STD. 635001 & 635006)
- ⑫ TRAFFIC BARRIER TERMINAL, TYPE VARIES
- ⑬ TOPSOIL FURNISH AND PLACE, 4"; SEEDING, CLASS 2A; EROSION CONTROL BLANKET
- ⑭ AGGREGATE FILL (INCLUDED IN THE COST OF "CONCRETE MEDIAN SURFACE, 6" (SPECIAL)") (MATCH DEPTH TO ADJACENT CURB & GUTTER)
- ⑮ POLYMERIZED BITUMINOUS CONCRETE SURFACE COURSE, MIX "F", N105, 1 3/4"
- ⑯ PIPE UNDERDRAIN, 6" (SEE DETAILS)
- ⑰ POLYMERIZED BITUMINOUS CONCRETE BINDER COURSE, SUPERPAVE, IL-19, N105, 2 1/4"
- ⑱ ELECTRICAL DUCTBANK (SEE ELECTRICAL INFRASTRUCTURE PLANS)
- ⑲ TOPSOIL FURNISH AND PLACE, 12"; COMPOST FURNISH AND PLACE 6"; EROSION CONTROL BLANKET; SEEDING (SEE PLAN FOR CLASS)
- ⑳ CONCRETE BARRIER, SINGLE FACE, 42 INCH HEIGHT (SPECIAL); BARRIER BASE; CTA FENCE (SEE DETAILS); BARRIER WALL MARKERS (PER IDOT STD. 635001 & 635006)
- ㉑ PORTLAND CEMENT CONCRETE PAVEMENT 10" (JOINTED)
- ㉒ SUB-BASE GRANULAR MATERIAL, TYPE B 12"
- ㉓ SUB-BASE GRANULAR MATERIAL, TYPE B 6"
- ㉔ PORTLAND CEMENT CONCRETE SHOULDERS 9"
- ㉕ BITUMINOUS CONCRETE SURFACE COURSE, SUPERPAVE MIX "D", N70, 1 1/2"
- ㉖ PORTLAND CEMENT CONCRETE BASE COURSE 13"
- ㉗ PORTLAND CEMENT CONCRETE PAVEMENT 14" (JOINTED)

**EXISTING LEGEND**

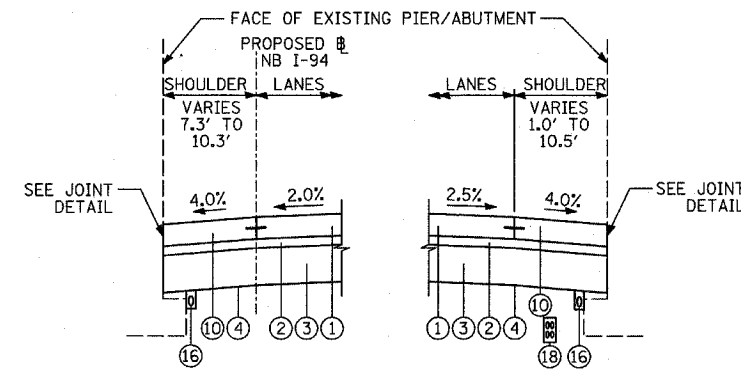
- ALL EXISTING PAVEMENT DEPTHS ARE FROM AS-BUILT PLANS AND ARE SUBJECT TO CHANGE
- A BIT CONC SURFACE COURSE, 1 1/2" ±
  - B BIT CONC BINDER COURSE, 1 1/2" ±
  - C BIT CONC BINDER COURSE, 4 3/4" ±
  - D SUB-BASE GRANULAR MATERIAL, 4" ±
  - E SUB-BASE GRANULAR MATERIAL, 6" ±
  - F CRUSHED STONE, 5" ±
  - G PCC SHOULDERS, 9" ±
  - H PCC BASE COURSE, 9" ±
  - I COMB CONC CURB & GUTTER
  - J PCC PAVEMENT, 10" ± (W/ PAVEMENT FABRIC, 80 LBS ± /100 SF)
  - K CONCRETE BARRIER WALL
  - L CTA BALLAST STONE; REGRADE, AS NECESSARY (INCLUDE REGRADE IN THE COST OF "CONCRETE BARRIER, SINGLE FACE, 42 INCH HEIGHT (SPECIAL)")
  - M BITUMINOUS SURFACE, 7" ±
  - N STABILIZED SUB-BASE, 4" ±
  - O SUB-BASE GRANULAR MATERIAL, 12" ±
  - P EXISTING PIPE UNDERDRAIN (REMOVAL TO BE PAID FOR SEPARATELY. SEE SPECIAL PROVISION "PIPE UNDERDRAIN REMOVAL")
  - Q EXISTING FIBER OPTIC DUCT



**PROPOSED NB I-94 (DAN RYAN EXPWY) ALTERNATE EAST PAVEMENT EDGE TREATMENTS: GUARDRAIL**  
LOCATIONS VARY - SEE EXISTING/PROPOSED PLANS



**PROPOSED NB I-94 (DAN RYAN EXPWY) ALTERNATE EAST PAVEMENT EDGE TREATMENTS: CONCRETE BARRIER**  
LOCATIONS VARY - SEE EXISTING/PROPOSED PLANS



**PROPOSED NB I-94 (DAN RYAN EXPWY) ALTERNATE PAVEMENT EDGE TREATMENTS: EXISTING PIER/ABUTMENT**  
LOCATIONS VARY AT BRIDGES - SEE EXISTING/PROPOSED PLANS FOR LOCATIONS AND CROSS-STREET OVERPASS FOOTING DETAILS FOR ADDITIONAL DETAIL

**NOTES:**

1. REFER TO PAVEMENT JOINTING AND ELEVATION PLANS FOR DESCRIPTIONS AND DETAILS OF PAVEMENT JOINTS.

\* PAID FOR AS SUB-BASE GRANULAR MATERIAL, TYPE B 24"

**TYLIN INTERNATIONAL**

REVISIONS		ILLINOIS DEPARTMENT OF TRANSPORTATION	
NAME	DATE	F.A.I. 94 (DAN RYAN EXPRESSWAY)	
		EXISTING & PROPOSED TYPICAL SECTIONS NB I-94 (DAN RYAN EXPRESSWAY) (SHEET 1 OF 3)	
		SCALE: NONE DRAWN BY: RTM	
		DATE: MARCH 7, 2006 CHECKED BY: MPG	
ADDENDUM 1	05/08/06		

F.A.I. RTE.	SECTION	COUNTY	TOTAL SHEETS	SHEET NO.
94	1818 R-3	COOK	265	14
STA. 2316+00		TO STA. 2367+00		
FED. ROAD DIST. NO.		ILLINOIS FED. AID PROJECT		

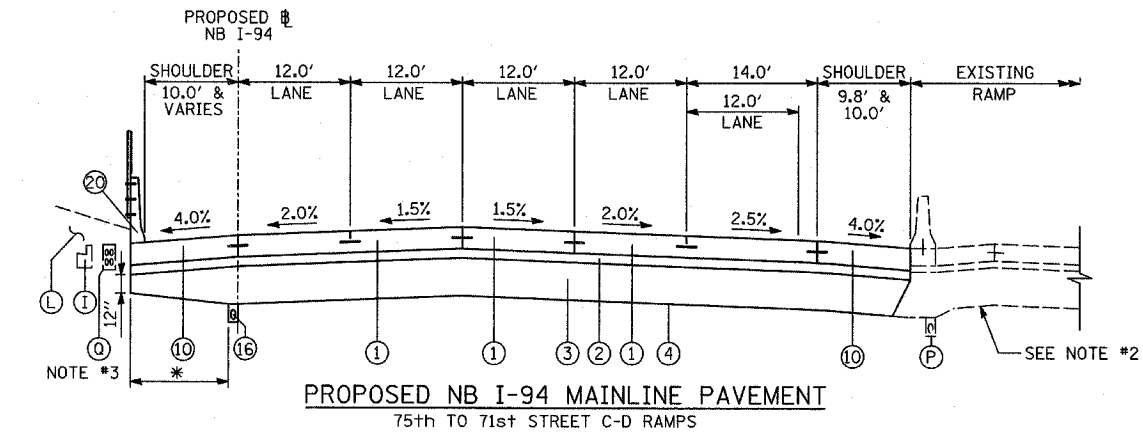
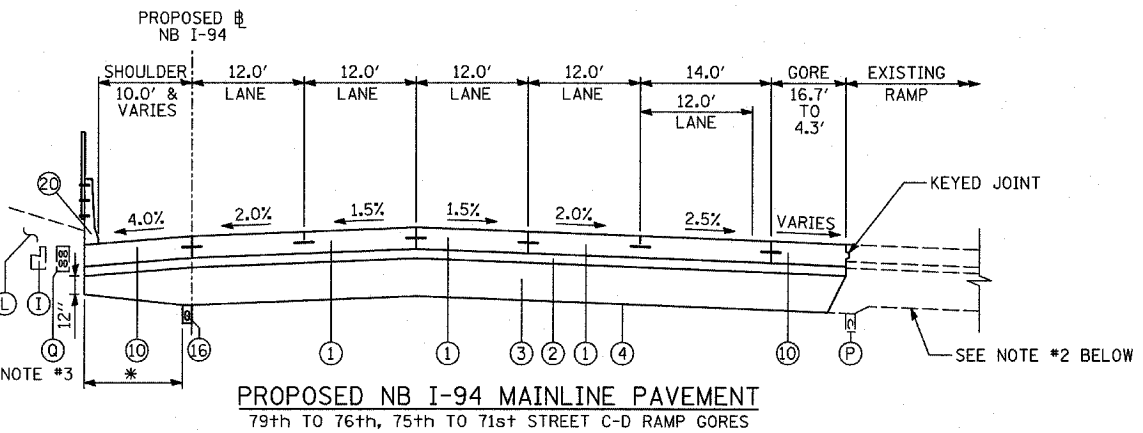
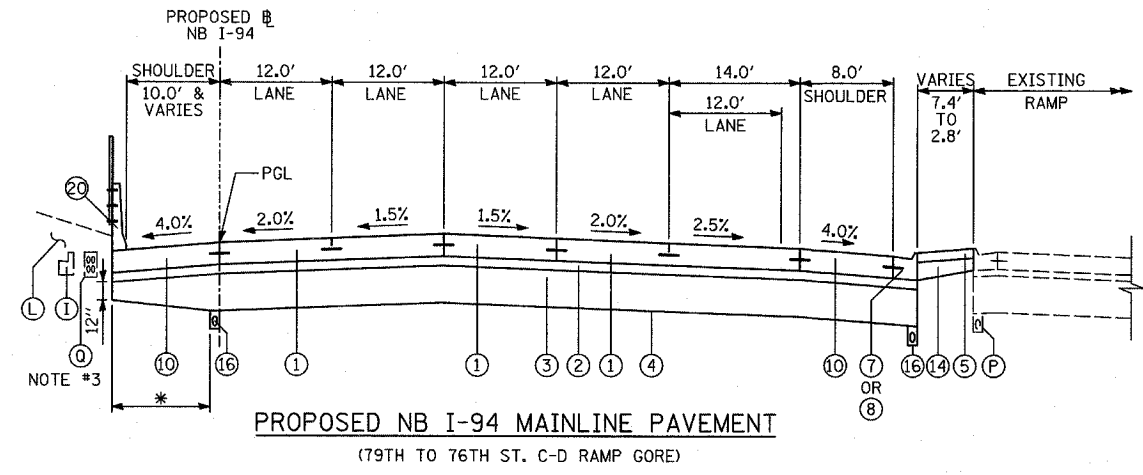
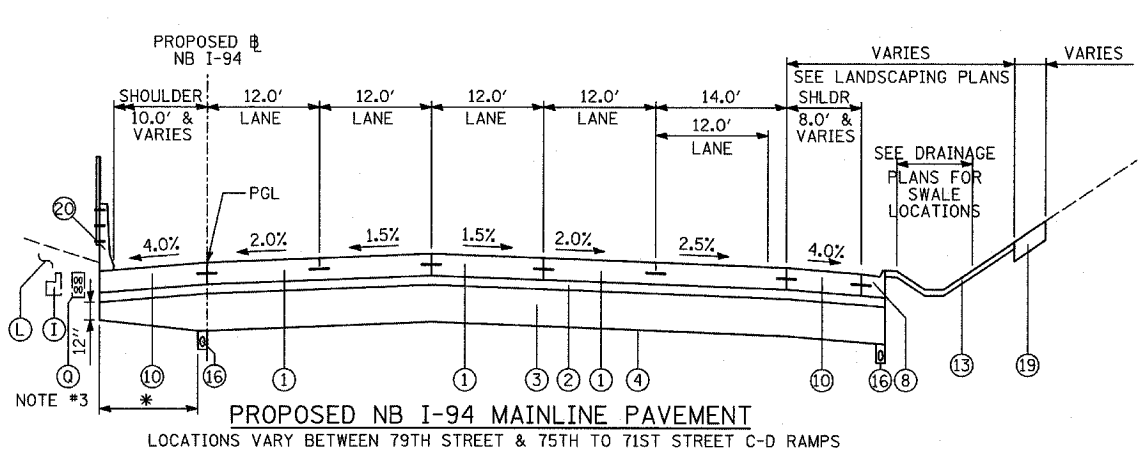
60B17

**PROPOSED LEGEND**

- ① CONTINUOUSLY REINFORCED PORTLAND CEMENT CONCRETE PAVEMENT 14" & PAVEMENT REINFORCEMENT, 14"
- ② STABILIZED SUB-BASE, 6" (BITUMINOUS AGGREGATE MIXTURE)
- ③ SUB-BASE GRANULAR MATERIAL, TYPE B 24"
- ④ GEOTECHNICAL FABRIC FOR GROUND STABILIZATION
- ⑤ CONCRETE MEDIAN SURFACE, 6 INCH (SPECIAL)
- ⑥ CONCRETE MEDIAN SURFACE, 6 INCH (SPECIAL) (WITHOUT STAMPED PATTERN)
- ⑦ COMBINATION CONCRETE CURB AND GUTTER, TYPE M-2.24
- ⑧ COMBINATION CONCRETE CURB AND GUTTER, TYPE M-4.24
- ⑨ COMBINATION CONCRETE CURB AND GUTTER, TYPE M-4.48
- ⑩ PORTLAND CEMENT CONCRETE SHOULDERS 14"
- ⑪ CONCRETE BARRIER, SINGLE FACE, 32 INCH HEIGHT; BARRIER BASE; BARRIER WALL MARKERS (PER IDOT STD. 635001 & 635006)
- ⑫ TRAFFIC BARRIER TERMINAL, TYPE VARIES
- ⑬ TOPSOIL FURNISH AND PLACE, 4"; SEEDING, CLASS 2A; EROSION CONTROL BLANKET
- ⑭ AGGREGATE FILL (INCLUDED IN THE COST OF "CONCRETE MEDIAN SURFACE, 6" (SPECIAL)") (MATCH DEPTH TO ADJACENT CURB & GUTTER)
- ⑮ POLYMERIZED BITUMINOUS CONCRETE SURFACE COURSE, MIX "F", N105, 1 3/4"
- ⑯ PIPE UNDERDRAIN, 6" (SEE DETAILS)
- ⑰ POLYMERIZED BITUMINOUS CONCRETE BINDER COURSE, SUPERPAVE, IL-19, N105, 2 3/4"
- ⑱ ELECTRICAL DUCTBANK (SEE ELECTRICAL INFRASTRUCTURE PLANS)
- ⑲ TOPSOIL FURNISH AND PLACE, 12"; COMPOST FURNISH AND PLACE 6"; EROSION CONTROL BLANKET; SEEDING (SEE PLAN FOR CLASS)
- ⑳ CONCRETE BARRIER, SINGLE FACE, 42 INCH HEIGHT (SPECIAL); BARRIER BASE; CTA FENCE (SEE DETAILS); BARRIER WALL MARKERS (PER IDOT STD. 635001 & 635006)
- ㉑ PORTLAND CEMENT CONCRETE PAVEMENT 10" (JOINTED)
- ㉒ SUB-BASE GRANULAR MATERIAL, TYPE B 12"
- ㉓ SUB-BASE GRANULAR MATERIAL, TYPE B 6"
- ㉔ PORTLAND CEMENT CONCRETE SHOULDERS 9"
- ㉕ BITUMINOUS CONCRETE SURFACE COURSE, SUPERPAVE MIX "D", N70, 1 1/2"
- ㉖ PORTLAND CEMENT CONCRETE BASE COURSE 13"
- ㉗ PORTLAND CEMENT CONCRETE PAVEMENT 14" (JOINTED)

**EXISTING LEGEND**

- ALL EXISTING PAVEMENT DEPTHS ARE FROM AS-BUILT PLANS AND ARE SUBJECT TO CHANGE
- (A) BIT CONC SURFACE COURSE, 1 1/2"±
  - (B) BIT CONC BINDER COURSE, 1 1/2"±
  - (C) BIT CONC BINDER COURSE, 4 3/4"±
  - (D) SUB-BASE GRANULAR MATERIAL, 4"±
  - (E) SUB-BASE GRANULAR MATERIAL, 6"±
  - (F) CRUSHED STONE, 5"±
  - (G) PCC SHOULDERS, 9"±
  - (H) PCC BASE COURSE, 9"±
  - (I) COMB CONC CURB & GUTTER
  - (J) PCC PAVEMENT, 10"± (W/ PAVEMENT FABRIC, 80 LBS±/100 SF)
  - (K) CONCRETE BARRIER WALL
  - (L) CTA BALLAST STONE; REGRADE AS NECESSARY (INCLUDE REGRADING IN THE COST OF "CONCRETE BARRIER, SINGLE FACE, 42 INCH HEIGHT (SPECIAL)")
  - (M) BITUMINOUS SURFACE, 7"±
  - (N) STABILIZED SUB-BASE, 4"±
  - (O) SUB-BASE GRANULAR MATERIAL, 12"±
  - (P) EXISTING PIPE UNDERDRAIN (REMOVAL TO BE PAID FOR SEPARATELY. SEE SPECIAL PROVISION "PIPE UNDERDRAIN REMOVAL")
  - (Q) EXISTING FIBER OPTIC DUCT



**NOTES:**

1. REFER TO PAVEMENT JOINTING AND ELEVATION PLANS FOR DESCRIPTIONS AND DETAILS OF PAVEMENT JOINTS.
2. EXACT LOCATION OF EXISTING FIBER OPTIC DUCT IS UNKNOWN. CONTRACTOR MUST NOTIFY THE CTA TO LOCATE THE DUCT PRIOR TO THE START OF WORK.
3. ANY REQUIRED REGRADING OF EXISTING ADJACENT SUB-BASE GRANULAR MATERIAL SHALL BE INCLUDED IN THE COST OF "SUB-BASE GRANULAR MATERIAL, TYPE B 24".

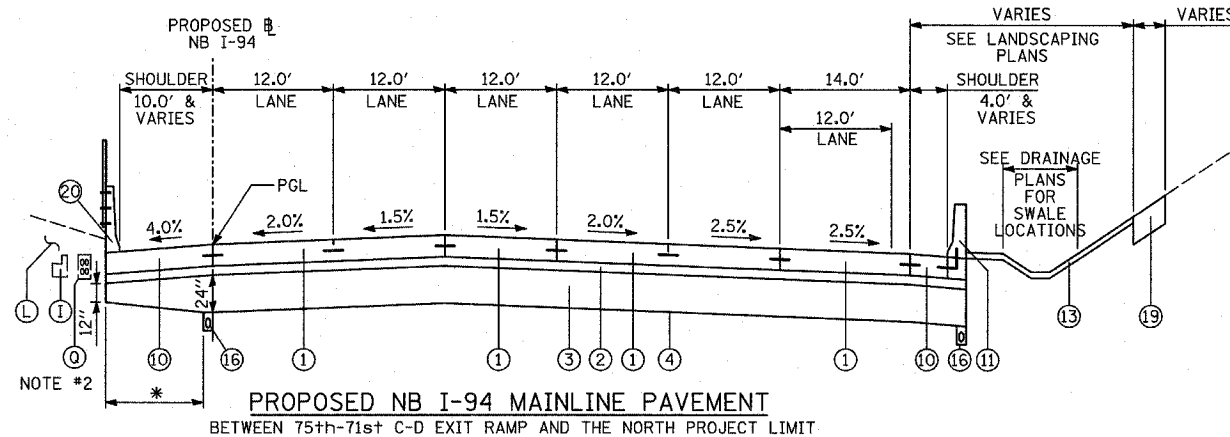
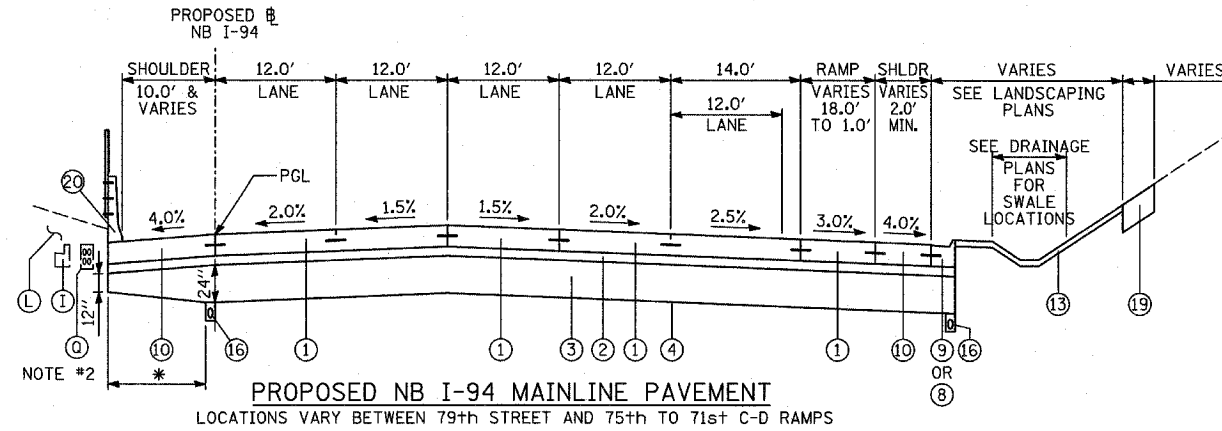
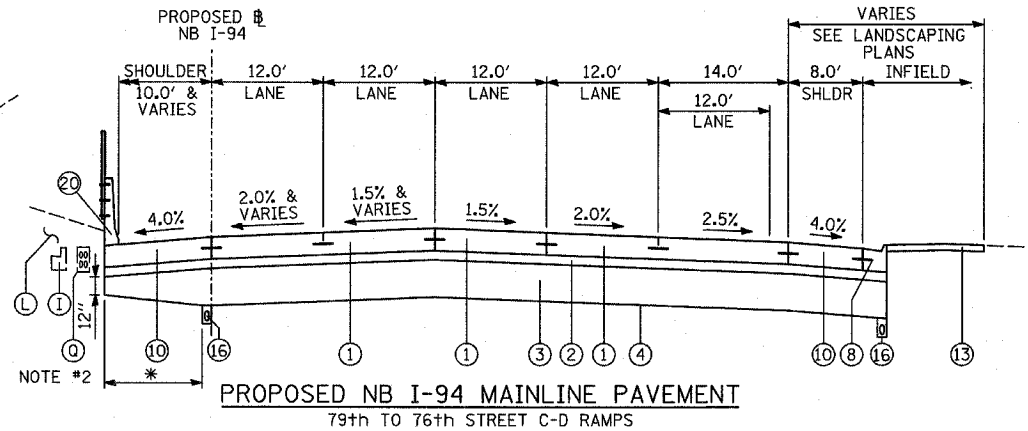
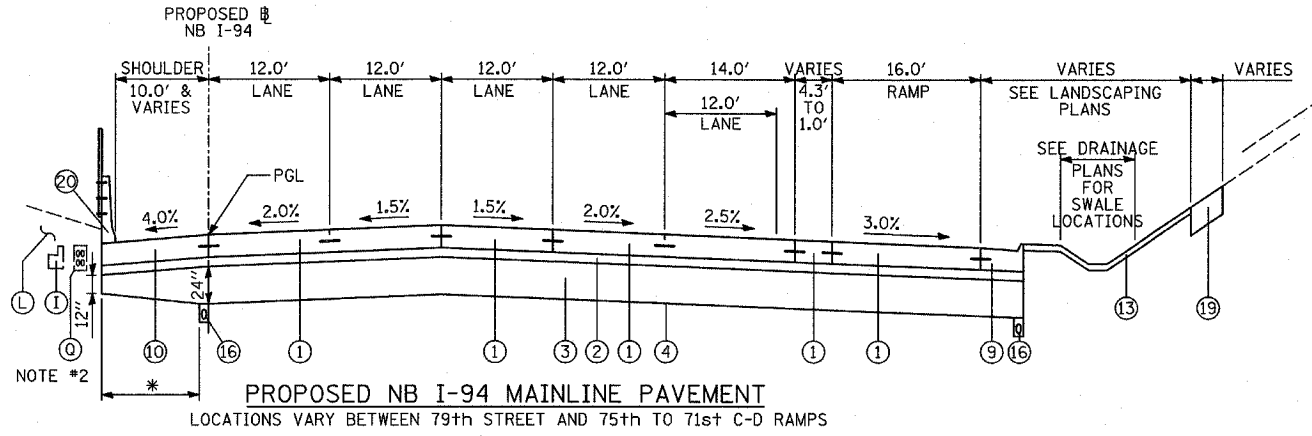
\* PAID FOR AS SUB-BASE GRANULAR MATERIAL, TYPE B 24"

**TYLIN INTERNATIONAL**

REVISIONS	
NAME	DATE

ILLINOIS DEPARTMENT OF TRANSPORTATION  
F.A.I. 94 (DAN RYAN EXPRESSWAY)  
EXISTING & PROPOSED TYPICAL SECTIONS  
NB I-94 (DAN RYAN EXPRESSWAY)  
(SHEET 2 OF 3)

SCALE: NONE  
DATE: MARCH 7, 2006  
DRAWN BY: RTM  
CHECKED BY: MPG



**PROPOSED LEGEND**

- ① CONTINUOUSLY REINFORCED PORTLAND CEMENT CONCRETE PAVEMENT 14" & PAVEMENT REINFORCEMENT, 14"
- ② STABILIZED SUB-BASE, 6" (BITUMINOUS AGGREGATE MIXTURE)
- ③ SUB-BASE GRANULAR MATERIAL, TYPE B 24"
- ④ GEOTECHNICAL FABRIC FOR GROUND STABILIZATION
- ⑤ CONCRETE MEDIAN SURFACE, 6 INCH (SPECIAL)
- ⑥ CONCRETE MEDIAN SURFACE, 6 INCH (SPECIAL) (WITHOUT STAMPED PATTERN)
- ⑦ COMBINATION CONCRETE CURB AND GUTTER, TYPE M-2.24
- ⑧ COMBINATION CONCRETE CURB AND GUTTER, TYPE M-4.24
- ⑨ COMBINATION CONCRETE CURB AND GUTTER, TYPE M-4.48
- ⑩ PORTLAND CEMENT CONCRETE SHOULDERS 14"
- ⑪ CONCRETE BARRIER, SINGLE FACE, 32 INCH HEIGHT; BARRIER BASE; BARRIER WALL MARKERS (PER IDOT STD. 635001 & 635006)
- ⑫ TRAFFIC BARRIER TERMINAL, TYPE VARIES
- ⑬ TOPSOIL FURNISH AND PLACE, 4"; SEEDING, CLASS 2A; EROSION CONTROL BLANKET
- ⑭ AGGREGATE FILL (INCLUDED IN THE COST OF "CONCRETE MEDIAN SURFACE, 6" (SPECIAL)") (MATCH DEPTH TO ADJACENT CURB & GUTTER)
- ⑮ POLYMERIZED BITUMINOUS CONCRETE SURFACE COURSE, MIX "F", N105, 1 1/4"
- ⑯ PIPE UNDERDRAIN, 6" (SEE DETAILS)
- ⑰ POLYMERIZED BITUMINOUS CONCRETE BINDER COURSE, SUPERPAVE, IL-19, N105, 2 1/4"
- ⑱ ELECTRICAL DUCTBANK (SEE ELECTRICAL INFRASTRUCTURE PLANS)
- ⑲ TOPSOIL FURNISH AND PLACE, 12"; COMPOST FURNISH AND PLACE 6"; EROSION CONTROL BLANKET; SEEDING (SEE PLAN FOR CLASS)
- ⑳ CONCRETE BARRIER, SINGLE FACE, 42 INCH HEIGHT (SPECIAL); BARRIER BASE; CTA FENCE (SEE DETAILS); BARRIER WALL MARKERS (PER IDOT STD. 635001 & 635006)
- ㉑ PORTLAND CEMENT CONCRETE PAVEMENT 10" (JOINTED)
- ㉒ SUB-BASE GRANULAR MATERIAL, TYPE B 12"
- ㉓ SUB-BASE GRANULAR MATERIAL, TYPE B 6"
- ㉔ PORTLAND CEMENT CONCRETE SHOULDERS 9"
- ㉕ BITUMINOUS CONCRETE SURFACE COURSE, SUPERPAVE MIX "D", N70, 1 1/2"
- ㉖ PORTLAND CEMENT CONCRETE BASE COURSE 13"
- ㉗ PORTLAND CEMENT CONCRETE PAVEMENT 14" (JOINTED)

**EXISTING LEGEND**

- ALL EXISTING PAVEMENT DEPTHS ARE FROM AS-BUILT PLANS AND ARE SUBJECT TO CHANGE
- (A) BIT CONC SURFACE COURSE, 1 1/2" ±
  - (B) BIT CONC BINDER COURSE, 1 1/2" ±
  - (C) BIT CONC BINDER COURSE, 3 3/4" ±
  - (D) SUB-BASE GRANULAR MATERIAL, 4" ±
  - (E) SUB-BASE GRANULAR MATERIAL, 6" ±
  - (F) CRUSHED STONE, 5" ±
  - (G) PCC SHOULDERS, 9" ±
  - (H) PCC BASE COURSE, 9" ±
  - (I) COMB CONC CURB & GUTTER
  - (J) PCC PAVEMENT, 10" ± (W/ PAVEMENT FABRIC, 80 LBS±/100 SF)
  - (K) CONCRETE BARRIER WALL
  - (L) CTA BALLAST STONE; REGRADE AS NECESSARY (INCLUDE REGRADE IN THE COST OF "CONCRETE BARRIER, SINGLE FACE, 42 INCH HEIGHT (SPECIAL)")
  - (M) BITUMINOUS SURFACE, 7" ±
  - (N) STABILIZED SUB-BASE, 4" ±
  - (O) SUB-BASE GRANULAR MATERIAL, 12" ±
  - (P) EXISTING PIPE UNDERDRAIN (REMOVAL TO BE PAID FOR SEPARATELY. SEE SPECIAL PROVISION "PIPE UNDERDRAIN REMOVAL")
  - (Q) EXISTING FIBER OPTIC DUCT

**NOTES:**

- 1. REFER TO PAVEMENT JOINTING AND ELEVATION PLANS FOR DESCRIPTIONS AND DETAILS OF PAVEMENT JOINTS.
- 2. EXACT LOCATION OF EXISTING FIBER OPTIC DUCT IS UNKNOWN. CONTRACTOR MUST NOTIFY THE CTA TO LOCATE THE DUCT PRIOR TO THE START OF WORK.

REVISIONS		ILLINOIS DEPARTMENT OF TRANSPORTATION	
NAME	DATE	F.A.I. 94 (DAN RYAN EXPRESSWAY)	
		EXISTING & PROPOSED TYPICAL SECTIONS	
		NB I-94 (DAN RYAN EXPRESSWAY)	
		(SHEET 3 OF 3)	
		SCALE: NONE	DRAWN BY: RTM
		DATE: MARCH 7, 2006	CHECKED BY: MPG

TYLIN INTERNATIONAL

\* - PAID FOR AS SUB-BASE GRANULAR MATERIAL, TYPE B 24"



**GENERAL NOTES:**

SEE SPECIAL PROVISION TITLED TRAFFIC CONTROL AND PROTECTION (EXPRESSWAYS)  
 A WORK ZONE SPEED LIMIT OF 45 M.P.H. MUST BE MAINTAINED AT ALL TIMES.  
 QUANTITY FOR TEMPORARY PAVEMENT MARKING - LINE 6" WAS ASSUMED EQUAL TO THE LENGTH OF TEMPORARY CONCRETE BARRIER. UTILIZED WHEN THE BARRIER IS LOCATED ONE FOOT OR LESS FROM THE EDGE OF TRAVELED WAY.  
 ALL TEMPORARY PAVEMENT MARKINGS PLACED DURING THE WINTER SHUTDOWN STAGE OR ON EXISTING PAVEMENT SHALL BE PAID FOR AS EPOXY PAVEMENT MARKING OF THE LINE TYPE AND WIDTH SPECIFIED.  
 ALL TEMPORARY PAVEMENT MARKINGS PLACED ON NEW PAVEMENT SHALL BE PAID FOR AS PAVEMENT MARKING TAPE, TYPE III OF THE LINE TYPE AND WIDTH SPECIFIED EXCEPT WHEN DIRECTED OTHERWISE.  
 A TOTAL OF 4 CHANGEABLE MESSAGE SIGNS SHALL BE LOCATED ALONG THE MAINLINE AND NEAR RAMP CLOSURES FOR THE DURATION OF THIS CONTRACT. EXACT PLACEMENT OF THE SIGNS SHALL BE DETERMINED BY THE RESIDENT ENGINEER.  
 ANY RAISED REFLECTIVE PAVEMENT MARKERS THAT CONFLICT WITH THE TEMPORARY TRAFFIC LANES MUST HAVE THE REFLECTIVE LENSES REMOVED AS DIRECTED BY THE RESIDENT ENGINEER. MEASURE OF PAYMENT FOR REMOVAL OF REFLECTORS IS INCLUDED IN THE CONTRACT UNIT PRICE FOR TRAFFIC CONTROL AND PROTECTION (EXPRESSWAYS).  
 FOR ACCESS CONTROL, THE CONTRACTOR IS REQUIRED TO PLACE CHAIN LINK FENCE 6' (SPECIAL), 7'-2" CLEAR FROM THE CENTERLINE OF CTA TRACK, PRIOR TO REMOVING EXISTING CTA CHAIN LINK FENCE AND BARRIER WALL. THE CONTRACTOR MUST ALSO PLACE CHAIN LINK GATES, 6' X 6' SINGLE AT ALL LOCATIONS WHERE THERE ARE EXISTING CTA FENCE GATES. THE CHAIN LINK FENCE 6' (SPECIAL) MUST REMAIN IN PLACE UNTIL THE NEW PERMANENT CTA FENCE IS COMPLETED.  
 REFER TO MISCELLANEOUS DETAIL SHEETS FOR TEMPORARY PAVEMENT AND MILLING OPERATIONS AND FOR OVERDIG AREAS DETAILS.  
 THE RESIDENT ENGINEER SHALL ASSESS THE EXISTING CONDITION OF THE PAVEMENT LOCATED ALONG THE INSIDE SHOULDER. DAMAGED AREAS WILL REQUIRE SHOULDER REHABILITATION INCLUDING MILLING AND RESURFACING. ADDITIONAL QUANTITIES OF 155 SQ YD FOR BITUMINOUS SURFACE REMOVAL, 1 1/2" AND 13 TONS FOR BITUMINOUS CONCRETE SURFACE COURSE, SUPERPAVE, MIX "D", N70 HAVE BEEN INCLUDED IN THE PLANS.

**CONSTRUCTION STAGING NOTES**

**PRE STAGE 1 - NIGHT TIME OPERATIONS**

INSTALL RAMP CLOSURE ADVANCE INFORMATION SIGNS ON STAGE 1 RAMP CLOSURES A MINIMUM OF 2 WEEKS IN ADVANCE OF THE CLOSURE. SEE STAGE 1 RAMP CLOSURE GUIDELINES IN THE SPECIAL PROVISIONS.  
 COORDINATE 3 LANES OF TRAFFIC AT NB I-94 (DAN RYAN) STA. 2316+00 WITH CONTRACT #62304 IN ORDER TO MAINTAIN TRAFFIC FLOW.  
 COORDINATE MULTI-LANE WEAVE AT NB I-94 (DAN RYAN) STA. 2367+00 WITH CONTRACT #62300 IN ORDER TO MAINTAIN TRAFFIC FLOW.  
 COMPLETE SHOULDER REHABILITATION FOR AREAS OF DAMAGED PAVEMENT PRIOR TO SHIFTING TRAFFIC.  
 REMOVE EXISTING PAVEMENT MARKINGS AND REPLACE WITH EPOXY PAVEMENT MARKINGS.  
 REMOVE LENSES FROM RAISED REFLECTIVE PAVEMENT MARKERS.  
 INSTALL TEMPORARY CONCRETE BARRIER WALL AND REMAINING TEMPORARY TRAFFIC CONTROL DEVICES FOR STAGE 1 CONSTRUCTION.

COVER PERMANENT AND TEMPORARY SIGNS AS NEEDED.

**1 STAGE 1 CONSTRUCTION (FALL 2006)**

STAGE 1 CONSTRUCTS LANES 4, 5, & THE OUTSIDE SHOULDER ALONG THE MAINLINE I-94 (DAN RYAN) FROM STA. 2316+00 TO STA. 2367+00. THE AREA MENTIONED ABOVE INCLUDES ALL ADDITIONAL WORK WITHIN THE PROPOSED LIMITS.  
 MAINLINE NB I-94 (DAN RYAN) TRAFFIC WILL BE SHIFTED LEFT TO THE INSIDE SHOULDER IN 3-11' LANES UP TO STA. 2367+00 AND CONTRACT #62300.  
 IF CONTRACT #62300 IS COMPLETED PRIOR TO THE END OF STAGE 1, THE CONTRACTOR MUST MATCH THE FINAL LANE CONFIGURATION USING THE APPROPRIATE STATE AND DISTRICT 1 STANDARDS.  
 DURING STAGE 1 CONSTRUCTION ALONG NB I-94 (DAN RYAN), ALL CONSTRUCTION VEHICLES MUST STAY WITHIN THE HAUL ROAD. CROSSING EXIT RAMP TRAFFIC IS PROHIBITED. ADDITIONALLY, THE CONTRACTOR SHALL BE RESPONSIBLE TO DIFFERENTIATE BETWEEN THE RAMP EXIT AND HAUL ROAD ENTRANCE. THE CONTRACTOR SHALL UTILIZE EITHER THE A.I.S. OR C-D ROADWAY TO MERGE HAUL ROAD AND RAMP TRAFFIC. A STOP SIGN SHALL BE PLACED AT THE UPSTREAM END OF THE C-D ROADWAY TO STOP TRAFFIC ON THE RAMP FROM THE FRONTAGE ROAD. ALL SIGNING REQUIRED BY TC-18 SHALL BE APPLIED TO ANY WORK ZONE ACCESS OPTION EMPLOYED BY THE CONTRACTOR.  
**PRE WINTER LANE CONFIGURATION - NIGHT TIME OPERATIONS**  
 PERFORM THE FOLLOWING TEMPORARY PAVEMENT AND COLD MILLING OPERATION ALONG MAINLINE NB I-94 (DAN RYAN) BETWEEN EXISTING LANE 3 AND NEWLY CONSTRUCTED LANE 4 FROM STA. 2316+00 TO STA. 2367+00  
 COORDINATE 4 LANES OF TRAFFIC AT NB I-94 (DAN RYAN) STA. 2316+00 WITH CONTRACT #62304 IN ORDER TO MAINTAIN TRAFFIC FLOW.  
 COORDINATE MULTI-LANE WEAVE AT NB I-94 (DAN RYAN) STA. 2367+00 TO MATCH CONTRACT #62300'S FINAL PAVEMENT MARKINGS IN ORDER TO MAINTAIN TRAFFIC FLOW.  
 REMOVE CONFLICTING TEMPORARY PAVEMENT MARKINGS FROM STAGE 1 REPLACE WITH EPOXY PAVEMENT MARKINGS.  
 RELOCATE TEMPORARY CONCRETE BARRIER WALL TO CREATE ADEQUATE SHOULDERS FOR SNOW STORAGE AND RELOCATE REMAINING TEMPORARY TRAFFIC CONTROL DEVICES FOR THE WINTER LANE CONFIGURATION.  
 COVER & UNCOVER PERMANENT AND TEMPORARY SIGNS AS NEEDED.

**1 WINTER LANE CONFIGURATION (WINTER 2006 - 2007)**

MAINLINE NB I-94 (DAN RYAN) TRAFFIC WILL BE SHIFTED RIGHT TO THE OUTSIDE SHOULDER IN 4-11' LANES FROM STA. 2316+00 TO STA. 2367+00, THE CONTRACTOR MUST MATCH THE FINAL LANE CONFIGURATION FROM CONTRACT #62300.

**PRE STAGE 2 - NIGHT TIME OPERATIONS**

COORDINATE 3 LANES OF SPLIT TRAFFIC AT NB I-94 (DAN RYAN) STA. 2316+00 WITH CONTRACT #62304 IN ORDER TO MAINTAIN TRAFFIC FLOW.  
 COORDINATE SINGLE LANE WEAVE AND TRAFFIC MERGE AT NB I-94 (DAN RYAN) STA. 2367+00 WITH CONTRACTS #60A62 AND #62301 IN ORDER TO MAINTAIN TRAFFIC FLOW.  
 REMOVE CONFLICTING TEMPORARY PAVEMENT MARKINGS FROM THE WINTER LANE CONFIGURATION STAGE AND REPLACE WITH EPOXY OR PAVEMENT MARKING TAPE.  
 RELOCATE TEMPORARY CONCRETE BARRIER WALL AND REMAINING TEMPORARY TRAFFIC CONTROL DEVICES FOR STAGE 2.  
 COVER & UNCOVER PERMANENT AND TEMPORARY SIGNS AS NEEDED.

**1 STAGE 2 CONSTRUCTION (SPRING 2007)**

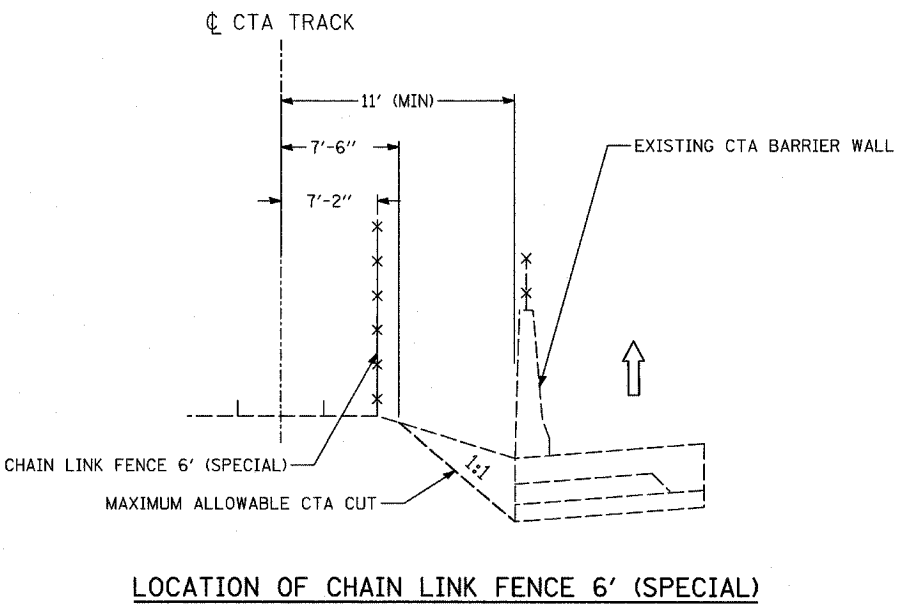
STAGE 2 CONSTRUCTS LANE 3 ALONG MAINLINE NB I-94 (DAN RYAN) FROM STA. 2316+00 TO STA. 2367+00.  
 MAINLINE NB I-94 (DAN RYAN) TRAFFIC WILL BE SHIFTED AND SPLIT INTO 2-11' LANES ON THE INSIDE SHOULDER AND 1-11' LANE ON THE OUTSIDE SHOULDER.  
 THE CONTRACTOR MUST COMPLETE LANE 3 FROM MAINLINE NB I-94 (DAN RYAN) STA. 2316+00 TO STA. 2367+00 DURING THE TIME PROVIDED IN STAGE 2.

**PRE STAGE 3 - NIGHT TIME OPERATIONS**

COORDINATE 3 LANES OF TRAFFIC AT NB I-94 (DAN RYAN) STA. 2316+00 WITH CONTRACT #62304 IN ORDER TO MAINTAIN TRAFFIC FLOW.  
 COORDINATE TRAFFIC MERGE AT NB I-94 (DAN RYAN) STA. 2367+00 WITH CONTRACTS #60A62 AND #62301 IN ORDER TO MAINTAIN TRAFFIC FLOW.  
 REMOVE CONFLICTING TEMPORARY PAVEMENT MARKINGS FROM STAGE 2 AND REPLACE WITH EPOXY OR PAVEMENT MARKING TAPE.  
 RELOCATE TEMPORARY CONCRETE BARRIER WALL AND REMAINING TEMPORARY TRAFFIC CONTROL DEVICES FOR STAGE 3.  
 COVER & UNCOVER PERMANENT AND TEMPORARY SIGNS AS NEEDED.

**1 STAGE 3 CONSTRUCTION (SUMMER AND FALL 2007)**

STAGE 3 CONSTRUCTS LANES 1, 2, AND THE INSIDE SHOULDER ALONG MAINLINE NB I-94 (DAN RYAN) FROM STA. 2316+00 TO STA. 2367+00.  
 MAINLINE NB I-94 (DAN RYAN) TRAFFIC WILL BE SHIFTED TO THE OUTSIDE SHOULDER IN 3-11' LANES FROM STA. 2316+00 TO STA. 2367+00.

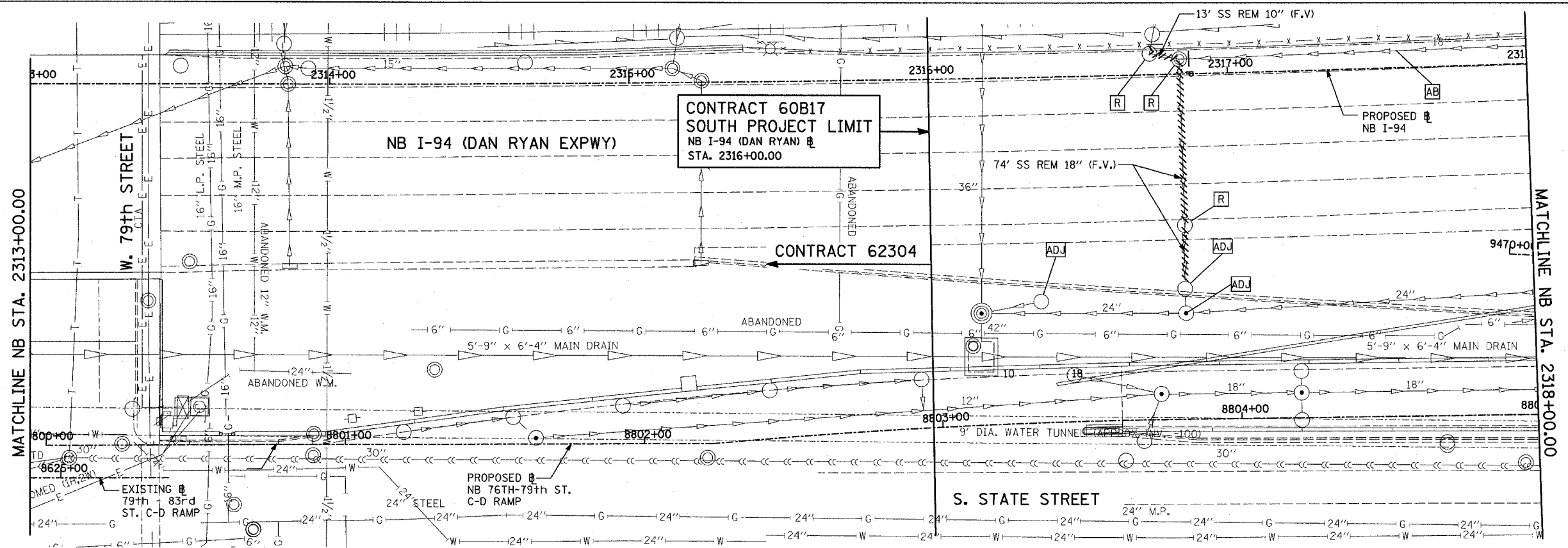


**LOCATION OF CHAIN LINK FENCE 6' (SPECIAL)**

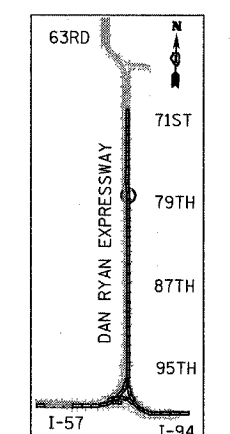
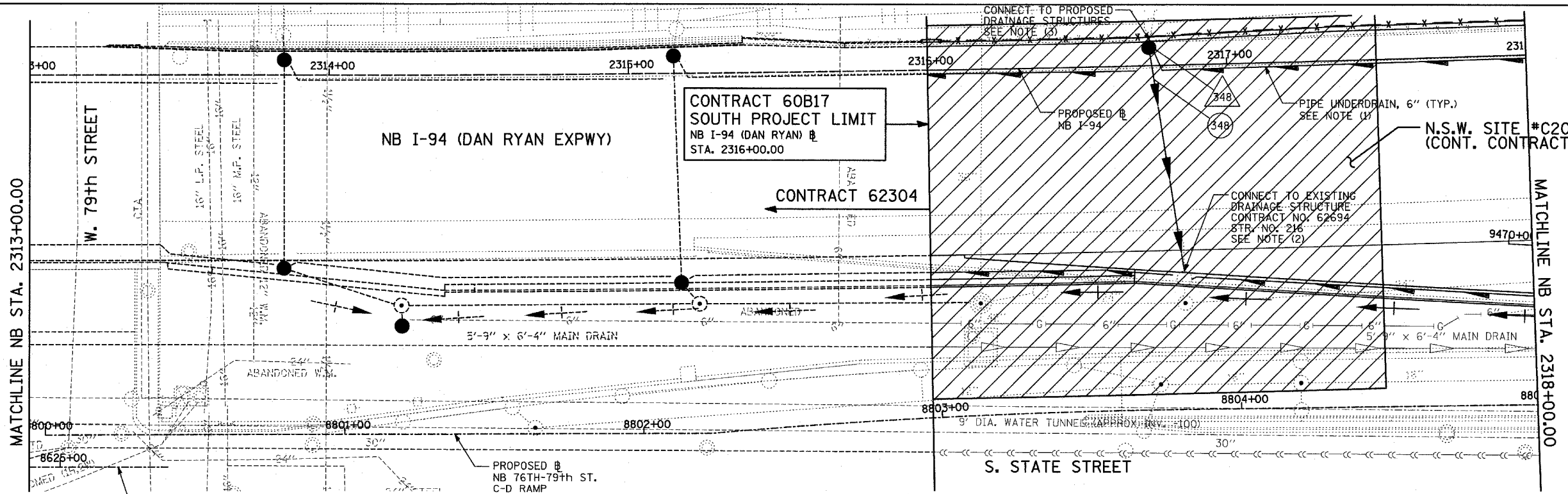


REVISIONS	
NAME	DATE
ADDENDUM 1	05/08/06

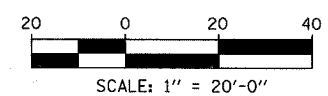
ILLINOIS DEPARTMENT OF TRANSPORTATION  
 F.A.I. 94 (DAN RYAN EXPRESSWAY)  
 GENERAL NOTES  
 CONSTRUCTION STAGING NOTES  
 MAINTENANCE OF TRAFFIC DETAILS  
 SHEET 1 OF 4  
 SCALE: NO SCALE  
 DATE: MARCH 7, 2006  
 DRAWN BY: RTM  
 CHECKED BY: TGB



EXISTING CONDITIONS  
PROPOSED IMPROVEMENTS



LOCATION MAP



**NOTES:**

- FOR CLARITY, PIPE UNDERDRAINS ARE SHOWN OFFSET FROM THEIR PROPOSED LOCATIONS. FOR DETAILED PLACEMENT, SEE SHEET "PIPE UNDERDRAINS DETAIL."
- CORE DRILL AND CONNECT TO EXISTING DRAINAGE STRUCTURE. CONNECTION COST SHALL BE INCLUDED IN THE COST TO CONSTRUCT THE STORM SEWER.
- ALL CONNECTIONS TO EXISTING SEWER OR STRUCTURE ALONG CTA SHALL BE FIELD VERIFIED PRIOR TO INSTALLATION AND COORDINATED WITH CTA CONSTRUCTION. COST SHALL BE INCLUDED IN THE COST TO CONSTRUCT THE DRAINAGE STRUCTURE.

1 NSW - NON SPECIAL WASTE SITES ADDED TO SHEET

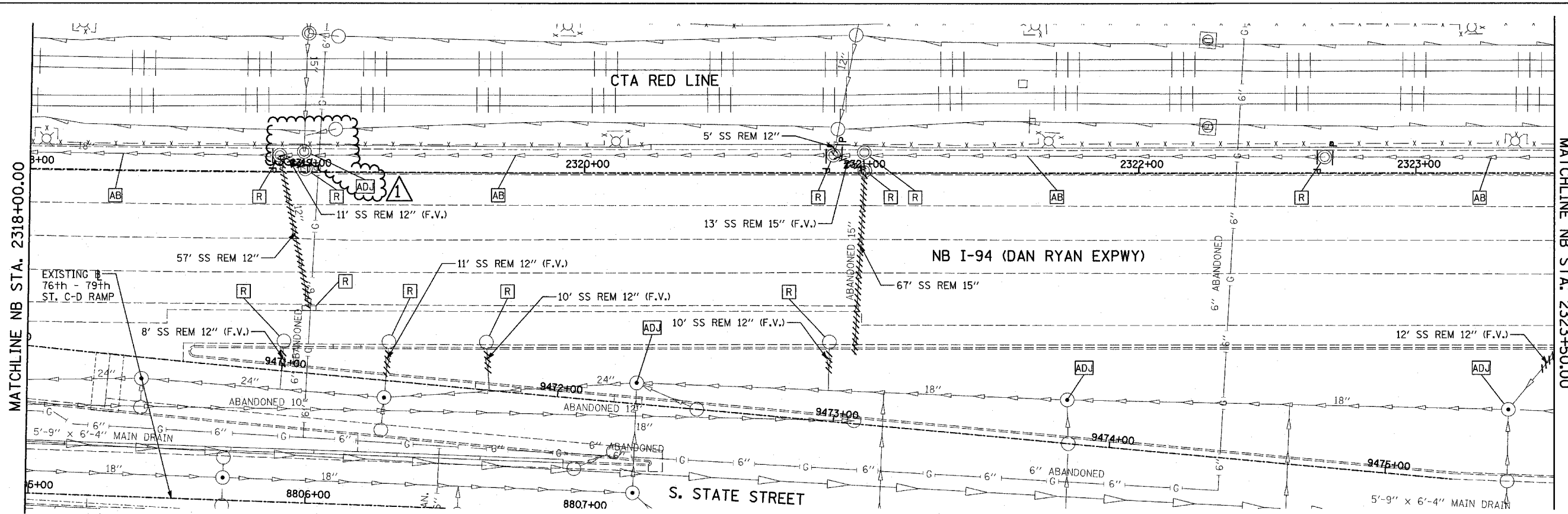
**LEGEND:**

	EXISTING COMBINED SEWER		SEWER PLUG
	PROPOSED STORM SEWER NUMBER (X=SHEET NO., Y=PIPE NO.)		FIELD VERIFY
	PROPOSED STRUCTURE NUMBER (X=SHEET NO., Y=STRUCTURE NO.)		UTILITY REMOVAL
	PIPE STUBOUT TO BE PLUGGED		

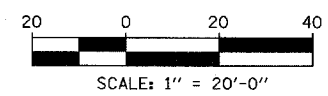
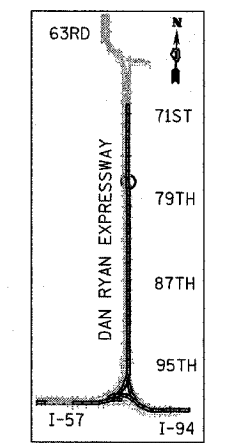
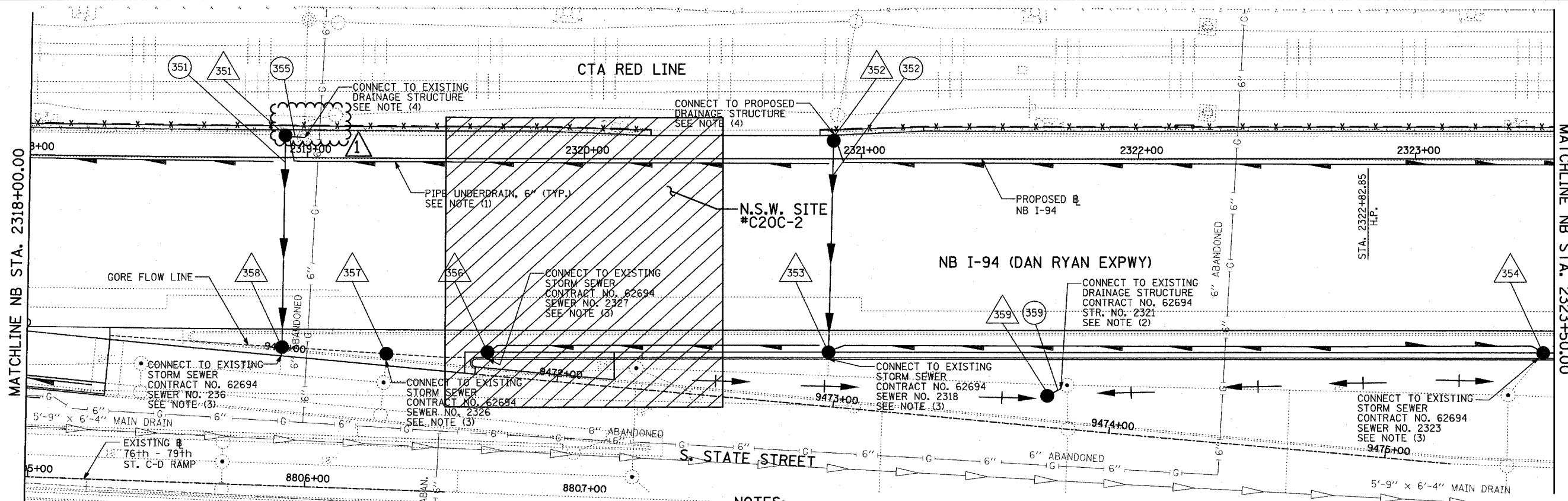
REVISIONS	
NAME	DATE

ILLINOIS DEPARTMENT OF TRANSPORTATION  
F.A.I. 94 (DAN RYAN EXPRESSWAY)  
DRAINAGE AND UTILITY PLAN  
NB I-94 (DAN RYAN EXPRESSWAY)  
NB I-94 STA. 2316+00.00 TO 2318+00.00

SCALE: 1"=20'  
DATE: MARCH 7, 2006  
DRAWN BY: MB  
CHECKED BY: DA



EXISTING CONDITIONS  
PROPOSED IMPROVEMENTS



**LEGEND:**

- EXISTING COMBINED SEWER
- PROPOSED STORM SEWER NUMBER (X=SHEET NO., Y=PIPE NO.)
- PROPOSED STRUCTURE NUMBER (X=SHEET NO., Y=STRUCTURE NO.)
- PIPE STUBOUT TO BE PLUGGED
- SEWER PLUG
- F.V. FIELD VERIFY
- UTILITY REMOVAL

**NOTES:**

- FOR CLARITY, PIPE UNDERDRAINS ARE SHOWN OFFSET FROM THEIR PROPOSED LOCATIONS. FOR DETAILED PLACEMENT, SEE SHEET "PIPE UNDERDRAINS DETAIL."
- CORE DRILL AND CONNECT TO EXISTING DRAINAGE STRUCTURE. CONNECTION COST SHALL BE INCLUDED IN THE COST TO CONSTRUCT THE STORM SEWER.
- COST SHALL NOT BE PAID FOR SEPARATELY BUT INCLUDED IN COST OF SEWER INSTALLATION.
- ALL CONNECTIONS TO EXISTING SEWER OR STRUCTURE ALONG CTA SHALL BE FIELD VERIFIED PRIOR TO INSTALLATION AND COORDINATED WITH CTA CONSTRUCTION. COST SHALL BE INCLUDED IN THE COST TO CONSTRUCT THE DRAINAGE STRUCTURE.

NSW - NON SPECIAL WASTE SITES ADDED TO SHEET

REVISIONS	
NAME	DATE

SHEET 35 OF 59

ADDENDUM 1 05/08/06

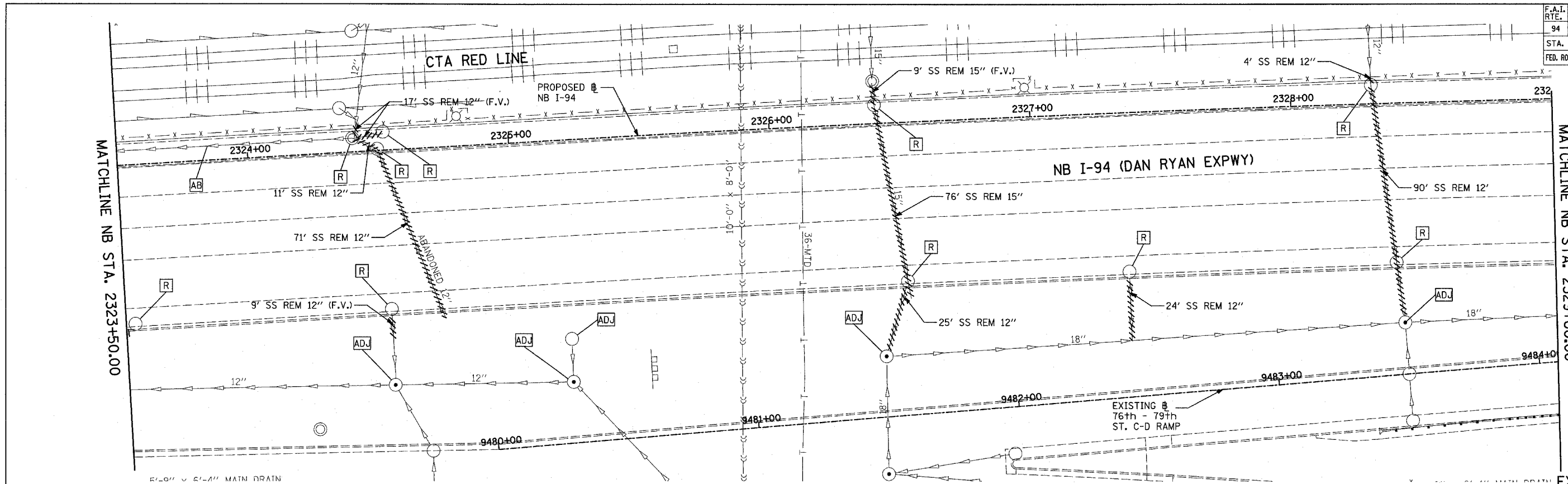
ILLINOIS DEPARTMENT OF TRANSPORTATION  
F.A.I. 94 (DAN RYAN EXPRESSWAY)  
DRAINAGE AND UTILITY PLAN  
NB I-94 (DAN RYAN EXPRESSWAY)  
NB I-94 STA. 2318+00.00 TO 2323+50.00

SCALE: 1"=20'  
DATE: MARCH 7, 2006  
DRAWN BY: MB  
CHECKED BY: DA

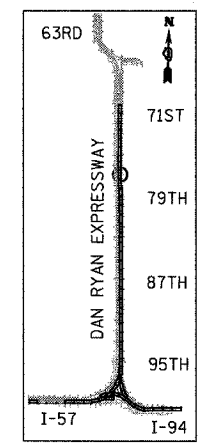
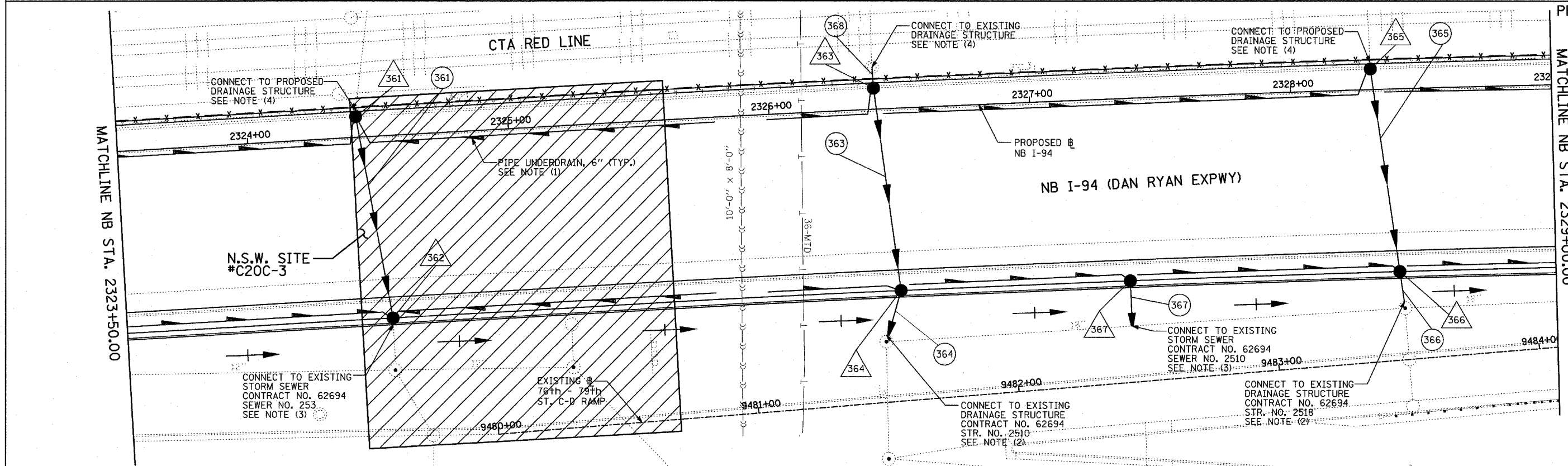
**TYLIN INTERNATIONAL**

F.A.I. RTE.	SECTION	COUNTY	TOTAL SHEETS	SHEET NO.
94	1818 R-3	COOK	265	110
STA. 2316+00		TO STA. 2367+00		
FED. ROAD DIST. NO.		ILLINOIS FED. AID PROJECT		

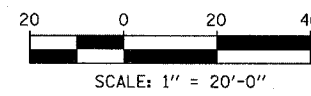
60B17



EXISTING CONDITIONS  
PROPOSED IMPROVEMENTS



LOCATION MAP



**LEGEND:**

- EXISTING COMBINED SEWER
- PROPOSED STORM SEWER NUMBER (X=SHEET NO., Y=PIPE NO.)
- PROPOSED STRUCTURE NUMBER (X=SHEET NO., Y=STRUCTURE NO.)
- PIPE STUBOUT TO BE PLUGGED
- SEWER PLUG
- F.V. FIELD VERIFY
- UTILITY REMOVAL

**NOTES:**

1. FOR CLARITY, PIPE UNDERDRAINS ARE SHOWN OFFSET FROM THEIR PROPOSED LOCATIONS. FOR DETAILED PLACEMENT, SEE SHEET "PIPE UNDERDRAINS DETAIL."
2. CORE DRILL AND CONNECT TO EXISTING DRAINAGE STRUCTURE. CONNECTION COST SHALL BE INCLUDED IN THE COST TO CONSTRUCT THE STORM SEWER.
3. COST SHALL NOT BE PAID FOR SEPARATELY BUT INCLUDED IN COST OF SEWER INSTALLATION.
4. ALL CONNECTIONS TO EXISTING SEWER OR STRUCTURE ALONG CTA SHALL BE FIELD VERIFIED PRIOR TO INSTALLATION AND COORDINATED WITH CTA CONSTRUCTION. COST SHALL BE INCLUDED IN THE COST TO CONSTRUCT THE DRAINAGE STRUCTURE.

NSW - NON SPECIAL WASTE SITES ADDED TO SHEET

REVISIONS	
NAME	DATE

ILLINOIS DEPARTMENT OF TRANSPORTATION  
F.A.I. 94 (DAN RYAN EXPRESSWAY)  
DRAINAGE AND UTILITY PLAN  
NB I-94 (DAN RYAN EXPRESSWAY)  
NB I-94 STA. 2323+50.00 TO 2329+00.00

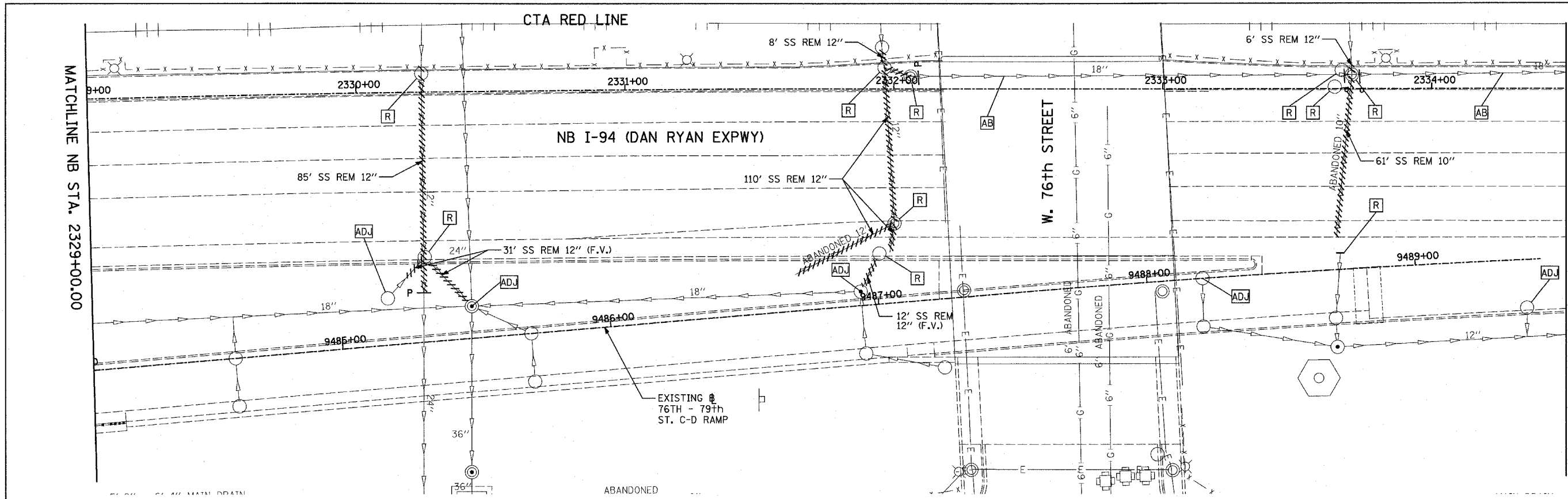
SCALE: 1"=20'  
DATE: MARCH 7, 2006  
DRAWN BY: MB  
CHECKED BY: DA

SHEET 36 OF 59  
ADDENDUM 1 - NSW 05/08/06

**TYLIN** INTERNATIONAL

F.A.I. RTE.	SECTION	COUNTY	TOTAL SHEETS	SHEET NO.
94	1818 R-3	COOK	265	111
STA. 2316+00		TO STA. 2367+00		
FED. ROAD DIST. NO.		ILLINOIS FED. AID PROJECT		

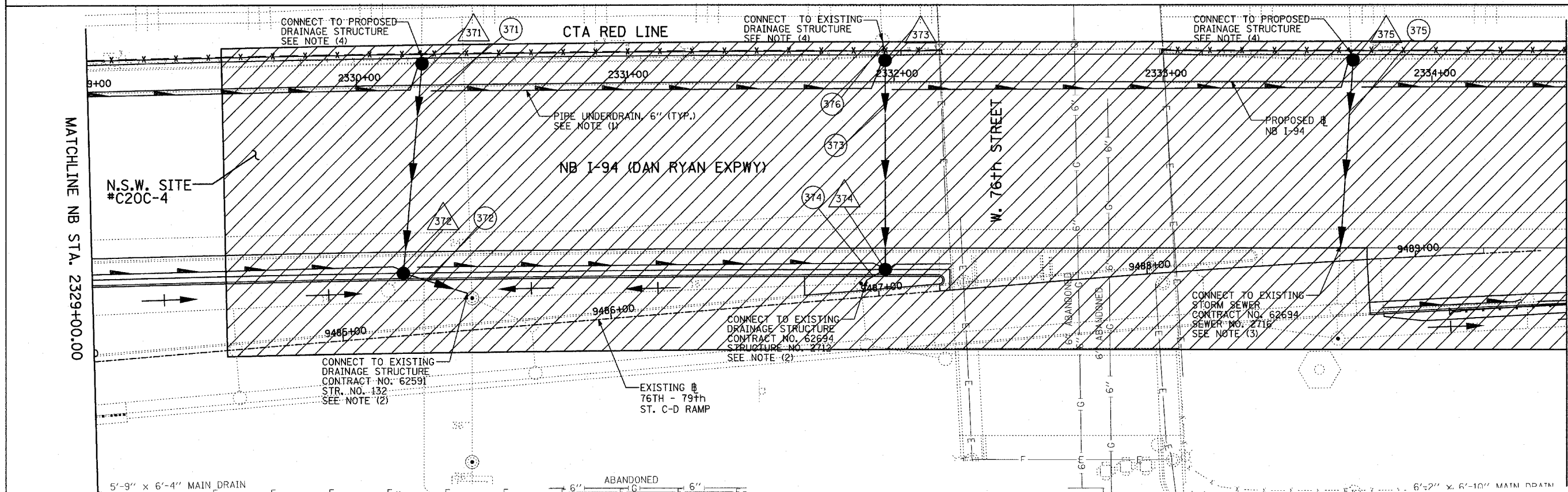
60B17



MATCHLINE NB STA. 2334+50.00

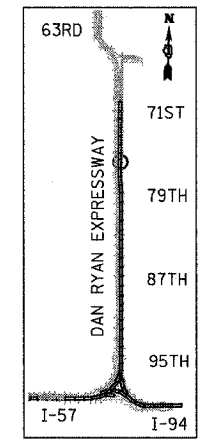
MATCHLINE NB STA. 2329+00.00

EXISTING CONDITIONS  
PROPOSED IMPROVEMENTS

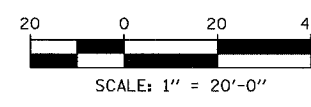


MATCHLINE NB STA. 2334+50.00

MATCHLINE NB STA. 2329+00.00



LOCATION MAP



SCALE: 1" = 20'-0"

**LEGEND:**

- EXISTING COMBINED SEWER
- PROPOSED STORM SEWER NUMBER (X=SHEET NO., Y=PIPE NO.)
- PROPOSED STRUCTURE NUMBER (X=SHEET NO., Y=STRUCTURE NO.)
- PIPE STUBOUT TO BE PLUGGED
- P SEWER PLUG
- F.V. FIELD VERIFY
- UTILITY REMOVAL

**NOTES:**

- FOR CLARITY, PIPE UNDERDRAINS ARE SHOWN OFFSET FROM THEIR PROPOSED LOCATIONS. FOR DETAILED PLACEMENT, SEE SHEET "PIPE UNDERDRAINS DETAIL."
- CORE DRILL AND CONNECT TO EXISTING DRAINAGE STRUCTURE. CONNECTION COST SHALL BE INCLUDED IN THE COST TO CONSTRUCT THE STORM SEWER.
- COST SHALL NOT BE PAID FOR SEPARATELY BUT INCLUDED IN COST OF SEWER INSTALLATION.
- ALL CONNECTIONS TO EXISTING SEWER OR STRUCTURE ALONG CTA SHALL BE FIELD VERIFIED PRIOR TO INSTALLATION AND COORDINATED WITH CTA CONSTRUCTION. COST SHALL BE INCLUDED IN THE COST TO CONSTRUCT THE DRAINAGE STRUCTURE.

**REVISIONS**

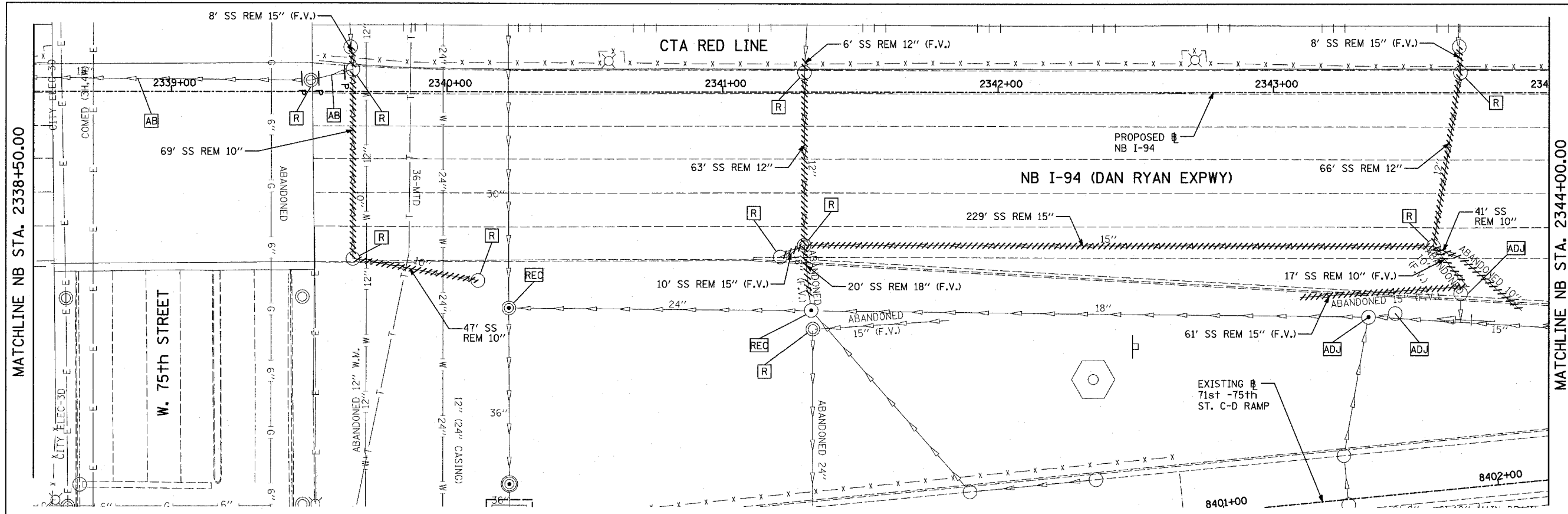
NAME	DATE

**ILLINOIS DEPARTMENT OF TRANSPORTATION**  
**F.A.I. 94 (DAN RYAN EXPRESSWAY)**  
**DRAINAGE AND UTILITY PLAN**  
**NB I-94 (DAN RYAN EXPRESSWAY)**  
**NB I-94 STA. 2329+00.00 TO 2334+50.00**

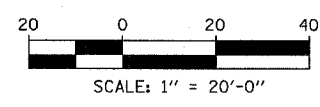
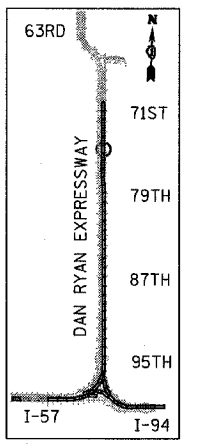
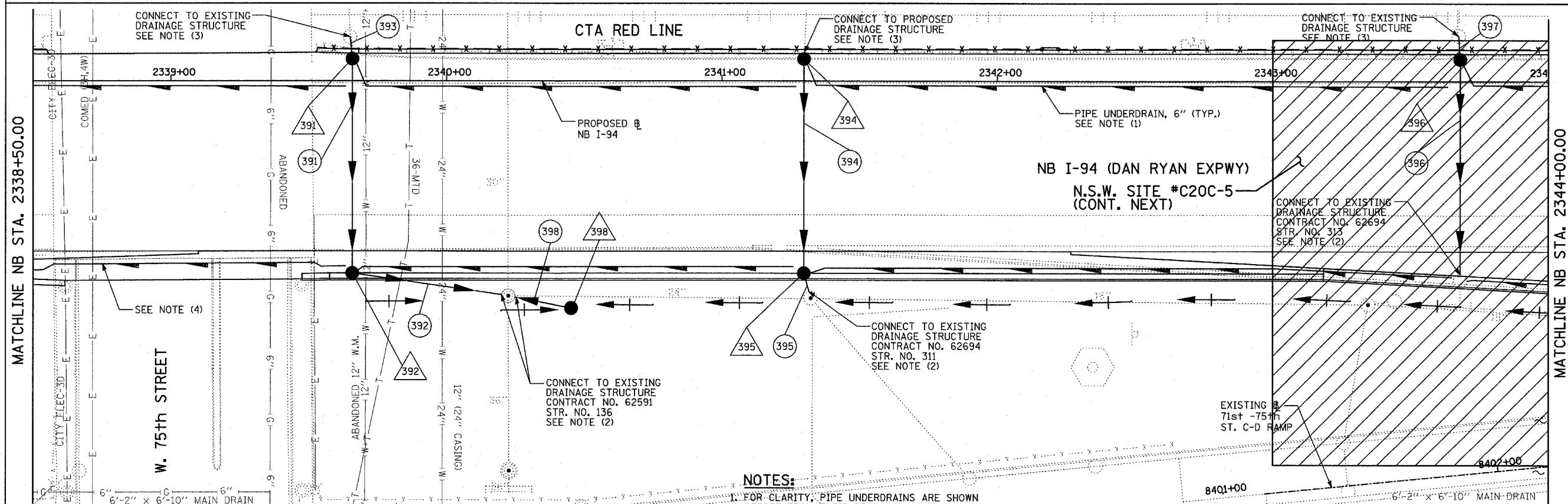
SCALE: 1"=20'  
DATE: MARCH 7, 2006  
DRAWN BY: MB  
CHECKED BY: DA

**TYLIN INTERNATIONAL**

F.A.I. RTE.	SECTION	COUNTY	TOTAL SHEETS	SHEET NO.
94	1818 R-3	COOK	265	113
STA. 2316+00		TO STA. 2367+00		
FED. ROAD DIST. NO.		ILLINOIS FED. AID PROJECT		



EXISTING CONDITIONS  
PROPOSED IMPROVEMENTS



**TYLIN INTERNATIONAL**

**LEGEND:**

	EXISTING COMBINED SEWER		SEWER PLUG
	PROPOSED STORM SEWER NUMBER (X=SHEET NO., Y=PIPE NO.)		FIELD VERIFY
	PROPOSED STRUCTURE NUMBER (X=SHEET NO., Y=STRUCTURE NO.)		UTILITY REMOVAL
	PIPE STUBOUT TO BE PLUGGED		

- NOTES:**
- FOR CLARITY, PIPE UNDERDRAINS ARE SHOWN OFFSET FROM THEIR PROPOSED LOCATIONS. FOR DETAILED PLACEMENT, SEE SHEET "PIPE UNDERDRAINS DETAIL."
  - CORE DRILL AND CONNECT TO EXISTING DRAINAGE STRUCTURE. CONNECTION COST SHALL BE INCLUDED IN THE COST TO CONSTRUCT THE STORM SEWER.
  - ALL CONNECTIONS TO EXISTING SEWER OR STRUCTURE ALONG CTA SHALL BE FIELD VERIFIED PRIOR TO INSTALLATION AND COORDINATED WITH CTA CONSTRUCTION. COST SHALL BE INCLUDED IN THE COST TO CONSTRUCT THE DRAINAGE STRUCTURE.
  - PROPOSED PIPE UNDERDRAIN SYSTEM LOCATION SHALL BE COORDINATED WITH PROPOSED ELECTRICAL DUCT BANK AND EXISTING FOOTING. SEE TYPICAL SECTIONS AND DETAILS FOR OVERPASS FOOTINGS.

NSW - NON SPECIAL WASTE SITES ADDED TO SHEET

REVISIONS	
NAME	DATE

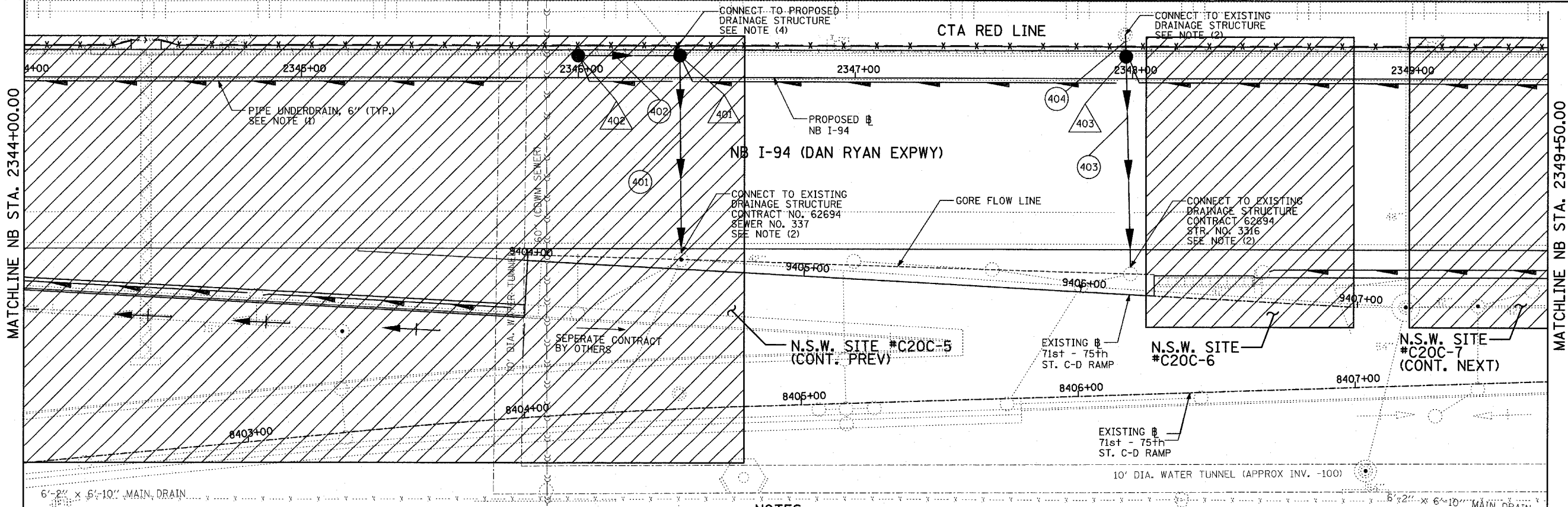
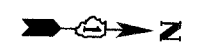
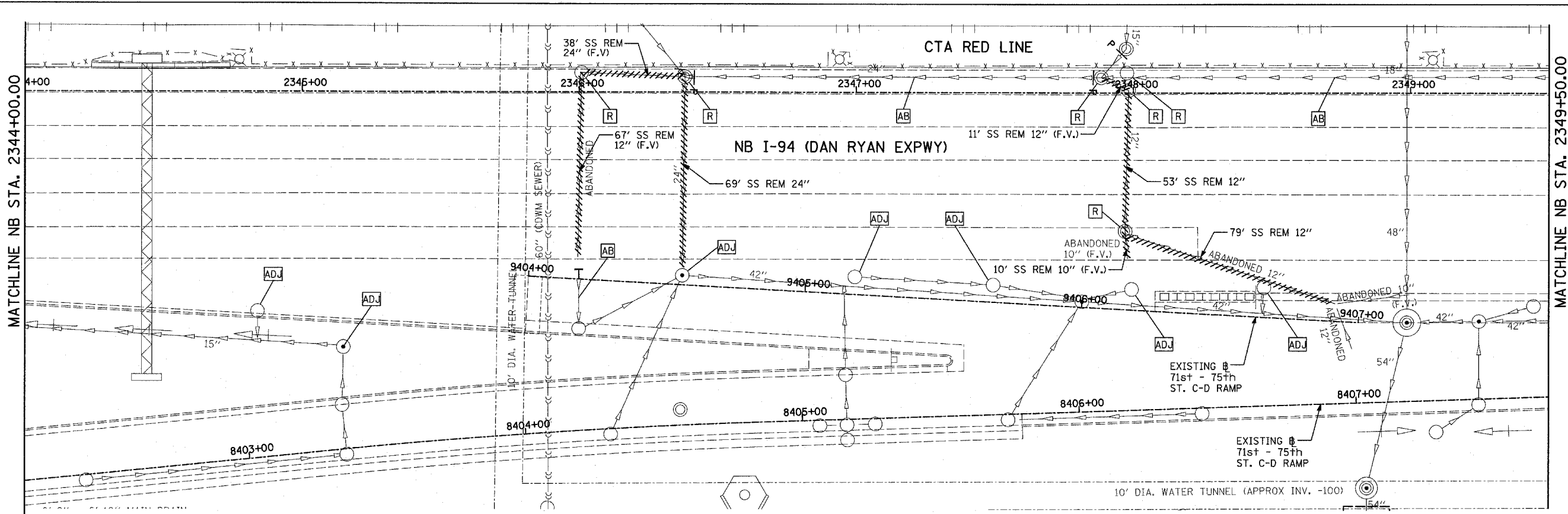
ILLINOIS DEPARTMENT OF TRANSPORTATION  
F.A.I. 94 (DAN RYAN EXPRESSWAY)  
DRAINAGE AND UTILITY PLAN  
NB I-94 (DAN RYAN EXPRESSWAY)  
NB I-94 STA. 2338+50.00 TO 2344+00.00

SCALE: 1"=20'  
DATE: MARCH 7, 2006

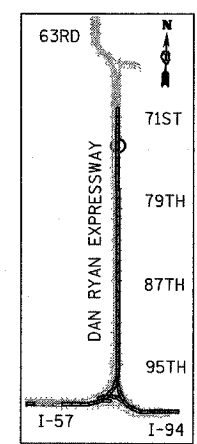
DRAWN BY: MB  
CHECKED BY: DA

F.A.I. RTE.	SECTION	COUNTY	TOTAL SHEETS	SHEET NO.
94	1818 R-3	COOK	265	114
STA. 2316+00		TO STA. 2367+00		
FED. ROAD DIST. NO.		ILLINOIS		FED. AID PROJECT

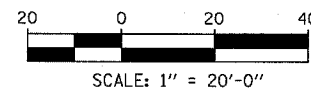
60B17



EXISTING CONDITIONS  
PROPOSED IMPROVEMENTS



LOCATION MAP



**TYLIN INTERNATIONAL**

**LEGEND:**

	EXISTING COMBINED SEWER		P SEWER PLUG
	PROPOSED STORM SEWER NUMBER (X=SHEET NO., Y=PIPE NO.)		F.V. FIELD VERIFY
	PROPOSED STRUCTURE NUMBER (X=SHEET NO., Y=STRUCTURE NO.)		UTILITY REMOVAL
	PIPE STUBOUT TO BE PLUGGED		

- NOTES:**
- FOR CLARITY, PIPE UNDERDRAINS ARE SHOWN OFFSET FROM THEIR PROPOSED LOCATIONS. FOR DETAILED PLACEMENT, SEE SHEET "PIPE UNDERDRAINS DETAIL."
  - CORE DRILL AND CONNECT TO EXISTING DRAINAGE STRUCTURE. CONNECTION COST SHALL BE INCLUDED IN THE COST TO CONSTRUCT THE STORM SEWER.
  - COST SHALL NOT BE PAID FOR SEPARATELY BUT INCLUDED IN COST OF SEWER INSTALLATION.

4. ALL CONNECTIONS TO EXISTING SEWER OR STRUCTURE ALONG CTA SHALL BE FIELD VERIFIED PRIOR TO INSTALLATION AND COORDINATED WITH CTA CONSTRUCTION. COST SHALL BE INCLUDED IN THE COST TO CONSTRUCT THE DRAINAGE STRUCTURE.

NSW - NON SPECIAL WASTE SITES ADDED TO SHEET

REVISIONS	
NAME	DATE

SHEET 40 OF 59

ADDENDUM 1 - NSW 05/08/06

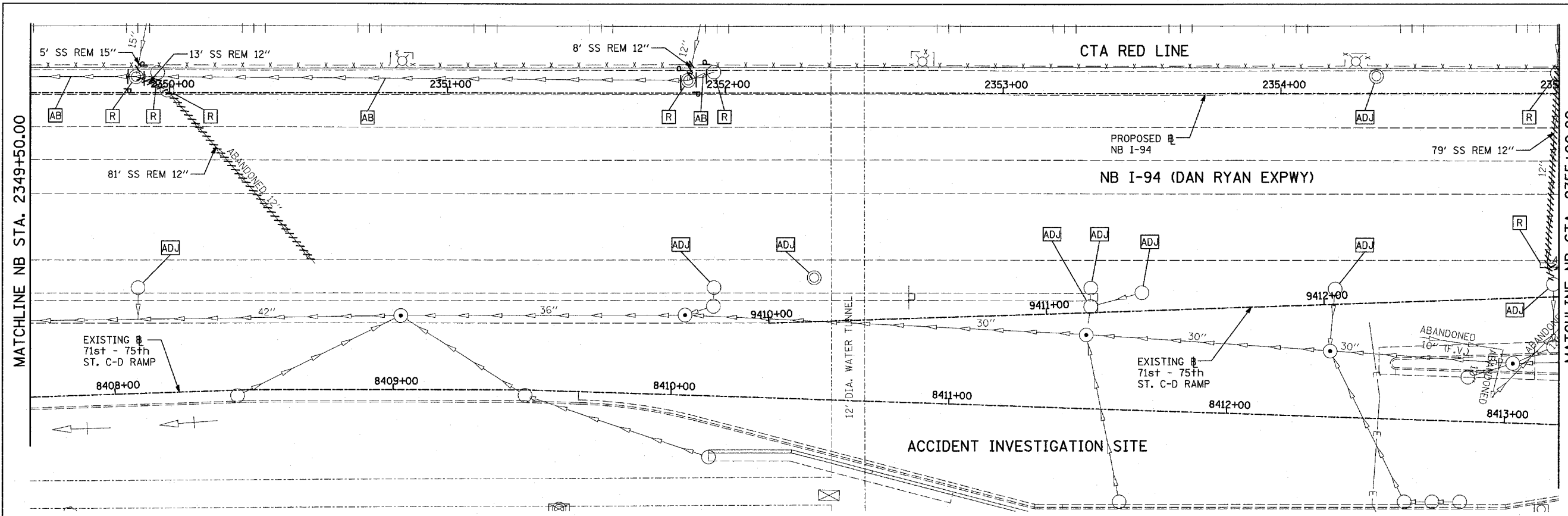
ILLINOIS DEPARTMENT OF TRANSPORTATION  
F.A.I. 94 (DAN RYAN EXPRESSWAY)  
DRAINAGE AND UTILITY PLAN  
NB I-94 (DAN RYAN EXPRESSWAY)  
NB I-94 STA. 2344+00.00 TO 2349+50.00

SCALE: 1"=20'  
DATE: MARCH 7, 2006

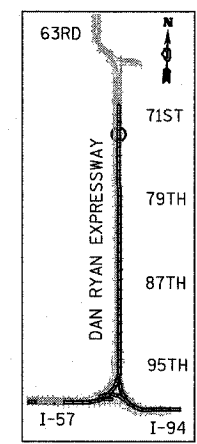
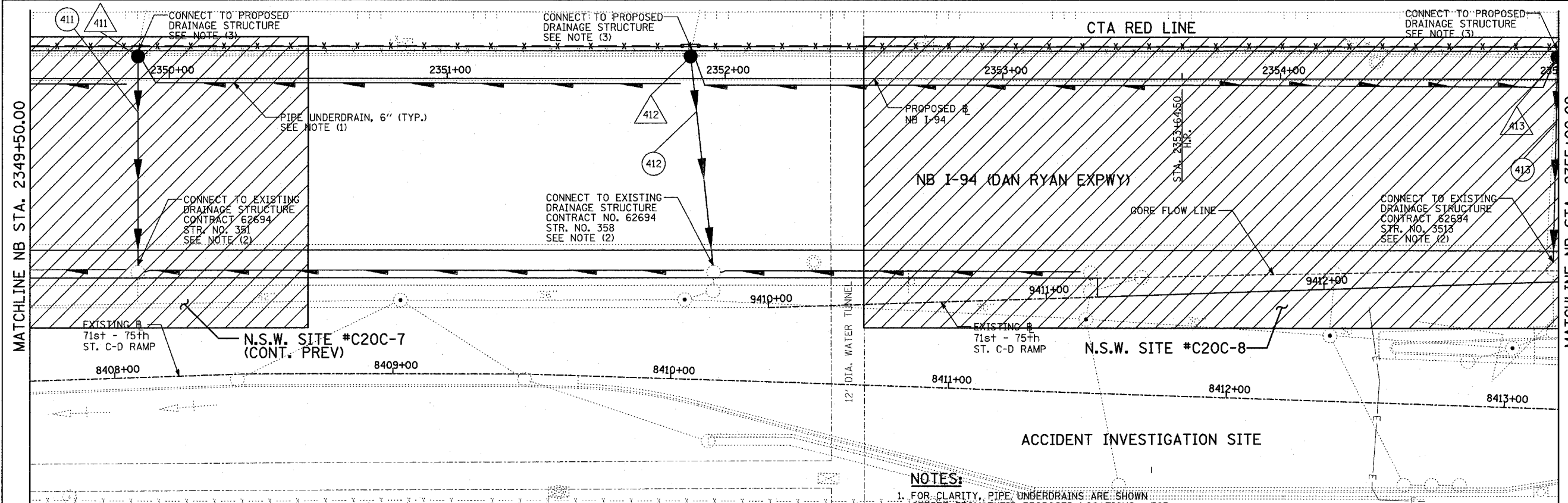
DRAWN BY: MB  
CHECKED BY: DA

F.A.I. RTE.	SECTION	COUNTY	TOTAL SHEETS	SHEET NO.
94	1818 R-3	COOK	265	115
STA. 2316+00		TO STA. 2367+00		
FED. ROAD DIST. NO.		ILLINOIS FED. AID PROJECT		

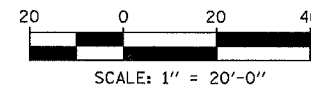
60B17



EXISTING CONDITIONS  
PROPOSED IMPROVEMENTS



LOCATION MAP



**TYLIN INTERNATIONAL**

**LEGEND:**

- EXISTING COMBINED SEWER
- PROPOSED STORM SEWER NUMBER (X=SHEET NO., Y=PIPE NO.)
- PROPOSED STRUCTURE NUMBER (X=SHEET NO., Y=STRUCTURE NO.)
- PIPE STUBOUT TO BE PLUGGED
- P SEWER PLUG
- F.V. FIELD VERIFY
- UTILITY REMOVAL

- NOTES:**
- FOR CLARITY, PIPE UNDERDRAINS ARE SHOWN OFFSET FROM THEIR PROPOSED LOCATIONS. FOR DETAILED PLACEMENT, SEE SHEET "PIPE UNDERDRAINS" DETAIL.
  - CORE DRILL AND CONNECT TO EXISTING DRAINAGE STRUCTURE. CONNECTION COST SHALL BE INCLUDED IN THE COST TO CONSTRUCT THE STORM SEWER.
  - ALL CONNECTIONS TO EXISTING SEWER OR STRUCTURE ALONG CTA SHALL BE FIELD VERIFIED PRIOR TO INSTALLATION AND COORDINATED WITH CTA CONSTRUCTION. COST SHALL BE INCLUDED IN THE COST TO CONSTRUCT THE DRAINAGE STRUCTURE.

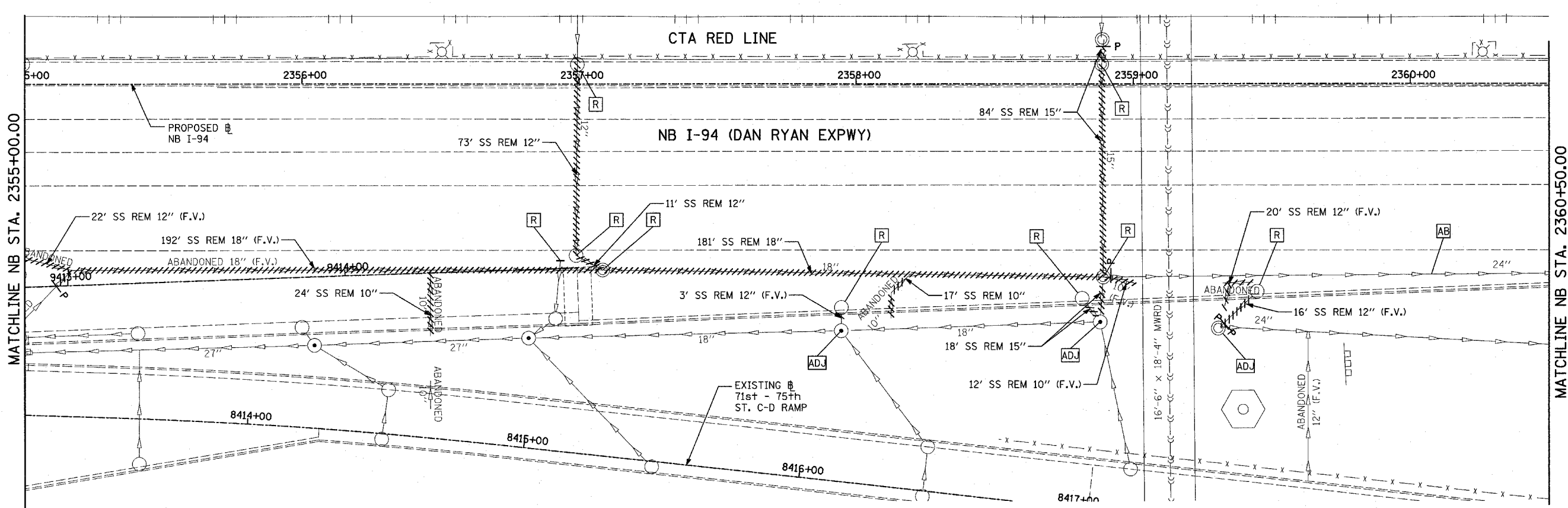
**1** NSW - NON SPECIAL WASTE SITES ADDED TO SHEET

REVISIONS	
NAME	DATE

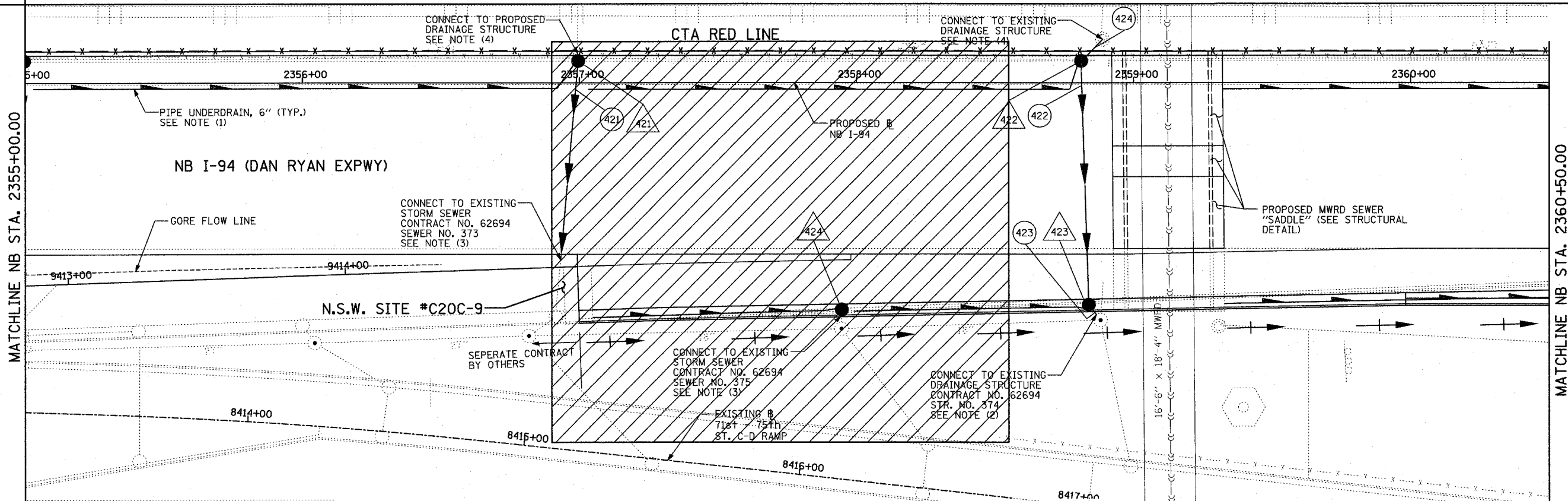
ILLINOIS DEPARTMENT OF TRANSPORTATION  
F.A.I. 94 (DAN RYAN EXPRESSWAY)  
DRAINAGE AND UTILITY PROPOSED PLAN  
NB I-94 (DAN RYAN EXPRESSWAY)  
NB I-94 STA. 2349+50.00 TO 2355+00.00

SCALE: 1"=20'  
DATE: MARCH 7, 2006  
DRAWN BY: MB  
CHECKED BY: DA



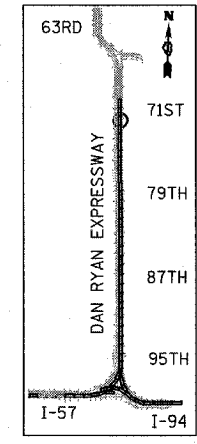


MATCHLINE NB STA. 2360+50.00

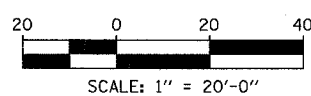


MATCHLINE NB STA. 2360+50.00

EXISTING CONDITIONS  
PROPOSED IMPROVEMENTS



LOCATION MAP



MATCHLINE NB STA. 2355+00.00

**TYLIN INTERNATIONAL**

- LEGEND:**
- EXISTING COMBINED SEWER
  - PROPOSED STORM SEWER NUMBER (X=SHEET NO., Y=PIPE NO.)
  - PROPOSED STRUCTURE NUMBER (X=SHEET NO., Y=STRUCTURE NO.)
  - PIPE STUBOUT TO BE PLUGGED
  - P SEWER PLUG
  - F.V. FIELD VERIFY
  - UTILITY REMOVAL

**NOTES:**

1. FOR CLARITY, PIPE UNDERDRAINS ARE SHOWN OFFSET FROM THEIR PROPOSED LOCATIONS. FOR DETAILED PLACEMENT, SEE SHEET "PIPE UNDERDRAINS DETAIL."
2. CORE DRILL AND CONNECT TO EXISTING DRAINAGE STRUCTURE. CONNECTION COST SHALL BE INCLUDED IN THE COST TO CONSTRUCT THE STORM SEWER.
3. COST SHALL NOT BE PAID FOR SEPARATELY BUT INCLUDED IN COST OF SEWER INSTALLATION.
4. ALL CONNECTIONS TO EXISTING SEWER OR STRUCTURE ALONG CTA SHALL BE FIELD VERIFIED PRIOR TO INSTALLATION AND COORDINATED WITH CTA CONSTRUCTION. COST SHALL BE INCLUDED IN THE COST TO CONSTRUCT THE DRAINAGE STRUCTURE.

NSW - NON SPECIAL WASTE SITES ADDED TO SHEET

REVISIONS	
NAME	DATE

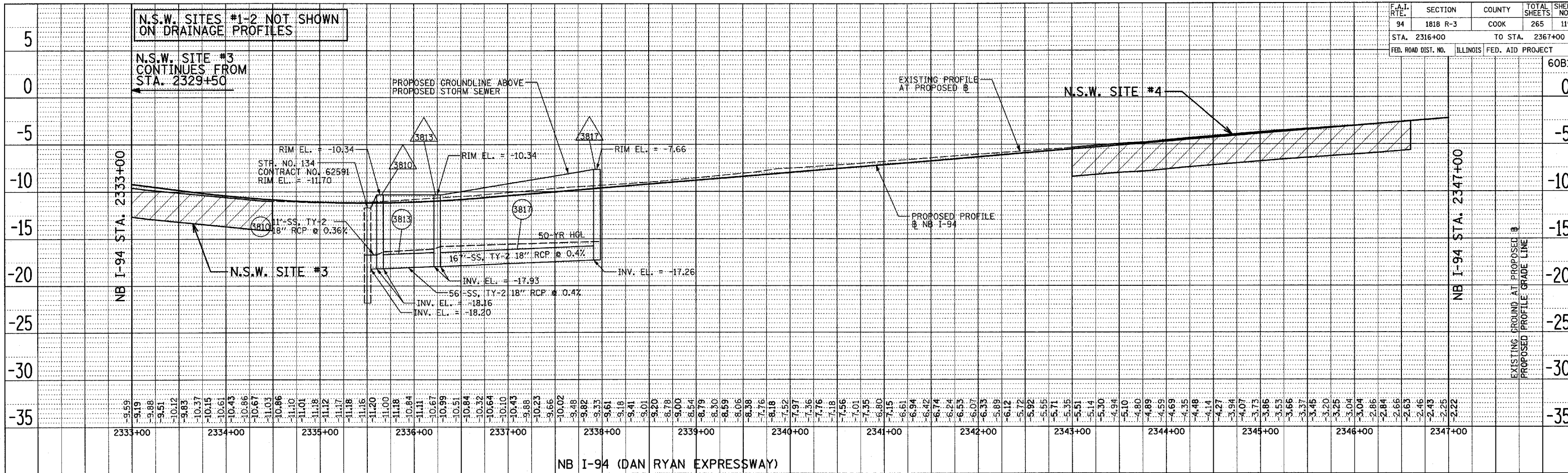
SHEET 42 OF 59

ILLINOIS DEPARTMENT OF TRANSPORTATION  
F.A.I. 94 (DAN RYAN EXPRESSWAY)  
DRAINAGE AND UTILITY PLAN  
NB I-94 (DAN RYAN EXPRESSWAY)  
NB I-94 STA. 2355+00.00 TO 2360+50.00

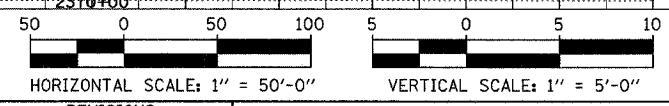
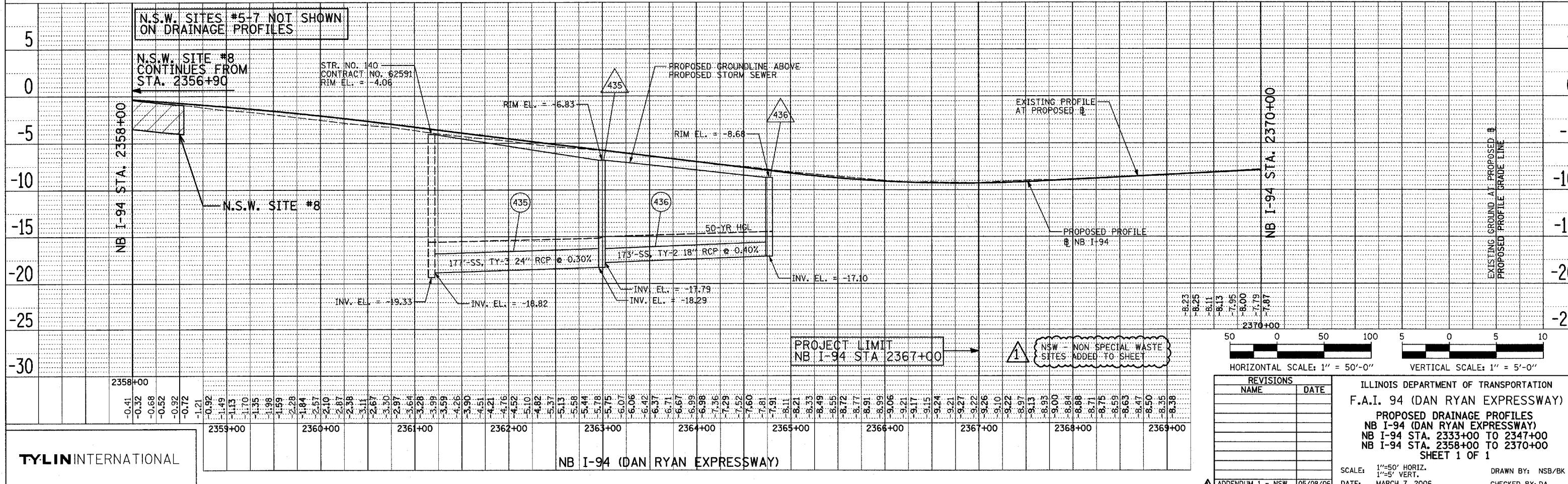
SCALE: 1"=20'  
DATE: MARCH 7, 2006  
DRAWN BY: MB  
CHECKED BY: DA

ADDENDUM 1 - NSW 05/08/06

DATE: \_\_\_\_\_  
 BY: \_\_\_\_\_  
 PLAN: \_\_\_\_\_  
 NO. \_\_\_\_\_  
 CHECKED: \_\_\_\_\_  
 DATE: \_\_\_\_\_



DATE: \_\_\_\_\_  
 BY: \_\_\_\_\_  
 PLAN: \_\_\_\_\_  
 NO. \_\_\_\_\_  
 CHECKED: \_\_\_\_\_  
 DATE: \_\_\_\_\_



REVISIONS	
NAME	DATE

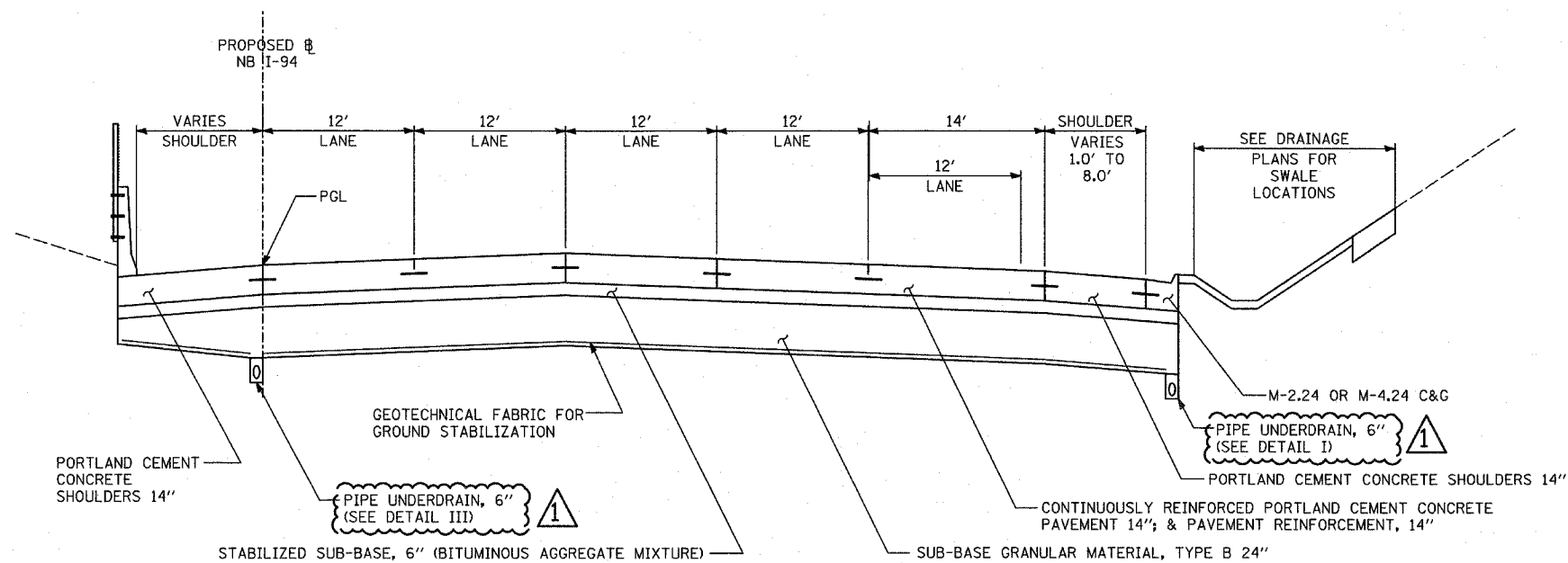
ILLINOIS DEPARTMENT OF TRANSPORTATION  
 F.A.I. 94 (DAN RYAN EXPRESSWAY)  
 PROPOSED DRAINAGE PROFILES  
 NB I-94 (DAN RYAN EXPRESSWAY)  
 NB I-94 STA. 2333+00 TO 2347+00  
 NB I-94 STA. 2358+00 TO 2370+00  
 SHEET 1 OF 1

SCALE: 1"=50' HORIZ.  
 1"=5' VERT.  
 DATE: MARCH 7, 2006

DRAWN BY: NSB/BK  
 CHECKED BY: DA

TYLIN INTERNATIONAL

ADDENDUM 1 - NSW 05/08/06

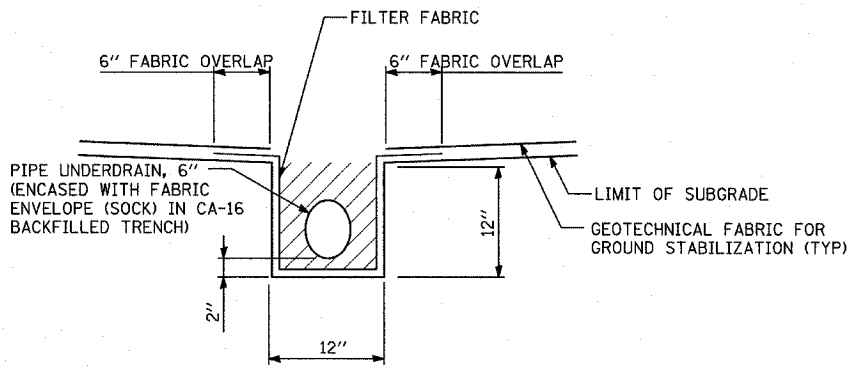
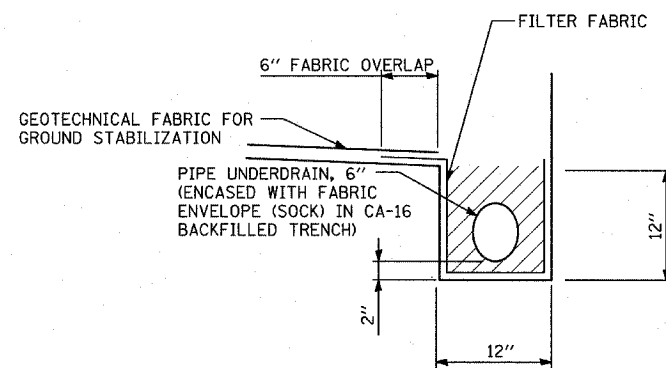


**PROPOSED NB I-94 MAINLINE PAVEMENT**  
 LOCATIONS VARY BETWEEN 79TH STREET & 75TH TO 71ST STREET C-D RAMPS

1

**NOTES:**

- (1) GEOTECHNICAL FABRIC FOR GROUND STABILIZATION SHALL BE PLACED SUCH THAT IT EXTENDS TO THE EDGE OF THE TRENCH AND OVERLAPS THE FILTER FABRIC BY A MINIMUM OF 6". AT NO TIME SHALL THE GEOTECHNICAL FABRIC FOR GROUND STABILIZATION BE OVER OR COVER THE UNDERDRAIN TRENCH.
- (2) NO CONSTRUCTION TRAFFIC SHALL BE ALLOWED ON THE TRENCH UNTIL A MINIMUM OF 12" OF COMPACTED SUB-BASE IS PROVIDED.
- (3) THE PIPE UNDERDRAIN TRENCH SHALL BE LINED WITH FILTER FABRIC ON THE BOTTOM AND SIDES OF THE TRENCH. THE TOP OF THE TRENCH MUST NOT BE COVERED WITH ANY FABRIC.
- (4) FILTER FABRIC, FABRIC ENVELOPE, AND CA-16 AGGREGATE ARE INCLUDED IN THE UNIT COST OF PIPE UNDERDRAIN, 6".
- (5) CONTRACTOR SHALL FLUSH PIPE UNDERDRAIN WITH WATER TO INSURE UNDERDRAIN IS FUNCTIONING PROPERLY PRIOR TO THE PLACEMENT OF STABILIZED SUB-BASE. PRIOR TO COMMENCING THIS WORK, THE CONTRACTOR SHALL PROVIDE THE ENGINEER WITH HIS APPROACH AND METHODS FOR COMPLETING THIS WORK, FOR THE ENGINEER'S REVIEW AND APPROVAL. THE COST OF FLUSHING THE PIPE IS INCLUDED IN THE UNIT COST OF PIPE UNDERDRAIN, 6".



REVISIONS	
NAME	DATE



DRAINAGE STRUCTURE SCHEDULE

STRUCTURE NUMBER	STATION	OFFSET	STRUCTURE TYPE		DIA.	FRAME & LID	TOP OF FRAME	N INV.	E INV.	S INV.	W INV.
			MH	CB							
413	2354+99.58	10.0 LT		A(7)	4'	T20 F&G	1.20		-4.23		
421	2356+99.57	10.0 LT		A(7)	4'	T20 F&G	0.08		-5.83		
422	2358+81.10	10.0 LT		A(7)	4'	T20 F&G	-1.37	-7.85	-7.85		
423	2358+83.84	82.3 RT		A	4'	T20 F&G	-1.91		-8.22		-8.22
424	2357+94.72	84.1 RT		A	4'	T20 F&G	-1.24		-7.84		
431	2360+97.79	10.0 LT		A(7)	4'	T20 F&G	-3.66		-10.76		
432	2360+97.79	80.0 RT		A	4'	T20 F&G	-4.19	-11.12			-11.12
433	2363+07.29	10.0 LT		A(7)	4'	T20 F&G	-6.24		-13.34		
434	2363+05.92	80.0 RT		A	4'	T20 F&G	-6.75		-13.70		-13.70
435	2362+99.24	85.6 RT	A		5'	T1F CL	-6.83	-17.79	-13.57	-18.29	-13.73
436	2364+77.04	85.6 RT	A		4'	T1F CL	-8.68			-17.10	-15.90
437	2364+82.96	10.0 LT		A(7)	4'	T20 F&G	-8.41		-15.51		-15.51
438	2364+82.95	80.0 RT		A	4'	T20 F&G	-8.90			-15.87	-15.87
439	NOT USED	- -	-	-	-	-	-	-	-	-	-
4310	2363+03.44	91.7 RT		C	2'	T1F OL	-7.05				-13.55
441	2336+25.09	10.0 LT		A(7)	4'	T20 F&G	-9.57		-16.67		
442	2336+25.09	80.0 RT		A	4'	T20 F&G	-10.10	-17.03			-17.03
443	NOT USED	- -	-	-	-	-	-	-	-	-	-
444	2367+38.58	104.8 RT	A		4'	T1F CL	-2.37			-17.53	-17.53
445	2366+91.87	10.0 LT		A(7)	4'	T20 F&G	-9.67	-15.58		-15.58	
446	2366+71.87	10.0 LT		A(7)	4'	T20 F&G	-9.67	-15.52			
447	2366+81.87	10.0 LT		A(7)	4'	T20 F&G	-9.67	-15.55		-15.55	

STORM SEWER SCHEDULE

PIPE NUMBER	UPSTREAM STATION	DOWNSTREAM STATION	TYPE	DIA. (IN)	LENGTH (FT)	SLOPE %	T.B. (CU.YD)
412	2351+87.69	2351+96.03	2	15	74	0.44	14.1
413	2354+99.58	2354+98.02	2	15	73	0.44	7.2
421	2356+99.57	2356+93.25	2	15	71	0.44	11.9
422	2358+81.10	2358+83.84	2	15	85	0.44	18.1
423	2358+83.84	2358+88.06	2	15	3	0.44	0.6
424	2358+88.83	2358+81.10	2	15	9	0.44	1.7
431	2360+97.79	2360+97.79	2	15	82	0.44	23.1
432	2360+97.79	2361+18.01	2	15	17	0.44	4.4
433	2363+07.29	2363+05.92	2	15	82	0.44	23.1
434	2363+05.92	2362+99.24	2	15	6	0.44	1.6
435	2362+99.24	2361+18.01	3	24	177	0.30	290.4
436	2364+77.04	2362+99.24	2	18	173	0.40	156.0
437	2364+82.96	2364+82.95	2	15	82	0.44	23.1
438	2364+82.95	2364+77.04	2	15	6	0.44	1.7
439	2364+83.16	2364+82.96	2	15	5	0.44	1.1
4310	2363+03.44	2362+99.24	2	12	4	0.44	0
441	2336+25.09	2336+25.09	2	15	82	0.44	23.1
442	2336+25.09	2367+38.58	2	15	113	0.44	20.2
443	NOT USED	-	-	-	-	-	-
444	2367+38.58	2367+38.55	3	15	3	0.44	0
445	2366+91.87	2367+00.00	2	15	7	0.44	1.2
446	2366+71.87	2366+81.87	2	15	6	0.44	0.9
447	2366+81.87	2366+91.87	2	15	6	0.44	0.9

NOTES:

- INDICATES INLET TYPE A, 2' DIAMETER, TYPE 20 FRAME & GRATE.
- INDICATES MANHOLE, TYPE A, 6' DIAMETER, TYPE 1 FRAME, CLOSED LID, RESTRICTOR PLATE.
- INDICATES SEWER LATERAL WITH 45° CONNECTION. SEE SHEET "DETAIL OF STORM SEWER CONNECTIONS TO SEWER."
- INDICATES SEWER LATERAL WITH 30° CONNECTION. SEE SHEET "DETAIL OF STORM SEWER CONNECTIONS TO SEWER."
- INDICATES SEWER LATERAL WITH 60° CONNECTION. SEE SHEET "DETAIL OF STORM SEWER CONNECTIONS TO SEWER."
- INDICATES MANHOLE TYPE A WITH FLAT SLAB TOP, IDOT STANDARD 602601.
- INDICATES CATCH BASIN REQUIRING TEMPORARY SOIL RETENTION SYSTEM WITH INSTALLATION.
- ALL STRUCTURE ELEVATIONS IN RESURFACED AREAS COME FROM AERIAL SURVEY AND SHOULD BE VERIFIED IN THE FIELD AND ADJUSTED TO MATCH EXISTING CONDITIONS.

CASING SIZES

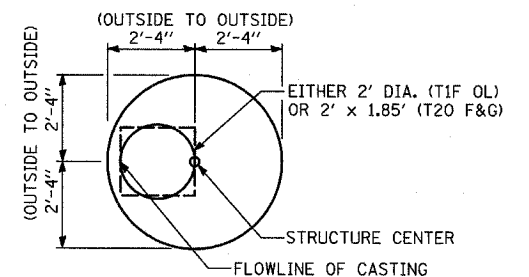
PIPE SIZE	CASING SIZE (OD)*	CASING WALL THICKNESS
12"	30"	0.500"
24"	42"	0.625"
30"	48"	0.688"
36"	48"	0.688"

\*ALL STEEL CASING SHALL MEET OR EXCEED ASTM A-139, GRADE B.  
SEE THE DRAINAGE & UTILITY PLANS FOR LOCATION OF ALL STRUCTURES.

CATCH BASIN STATIONS ARE MEASURED TO CENTER OF STRUCTURE.

CATCH BASIN OFFSETS ARE MEASURED TO FLOWLINE OF CASING. (SEE BELOW)

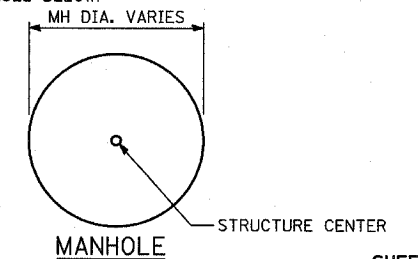
FLOWLINE OF CASING IS LOCATED AT C OF STRUCTURE FOR CATCH BASINS LOCATED IN SWALE AND GORE AREAS.



CATCH BASIN

(PRECAST REINFORCED CONCRETE SECTION)

MANHOLE STATIONS AND OFFSETS ARE MEASURED TO CENTER OF STRUCTURE. (SEE BELOW)



REVISIONS	
NAME	DATE

ILLINOIS DEPARTMENT OF TRANSPORTATION  
F.A.I. 94 (DAN RYAN EXPRESSWAY)  
DRAINAGE STRUCTURE SCHEDULE

SCALE: NONE  
DATE: MARCH 7, 2006  
DRAWN BY: RD  
CHECKED BY: DA