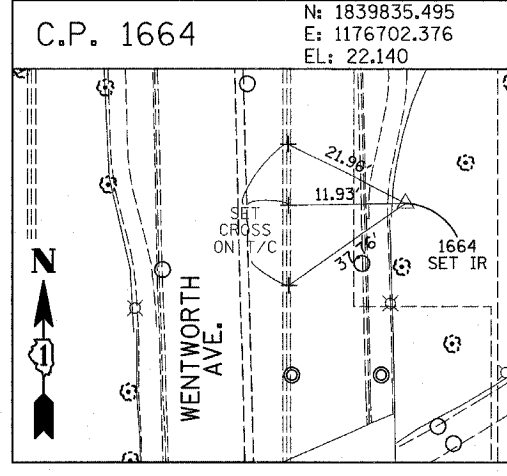
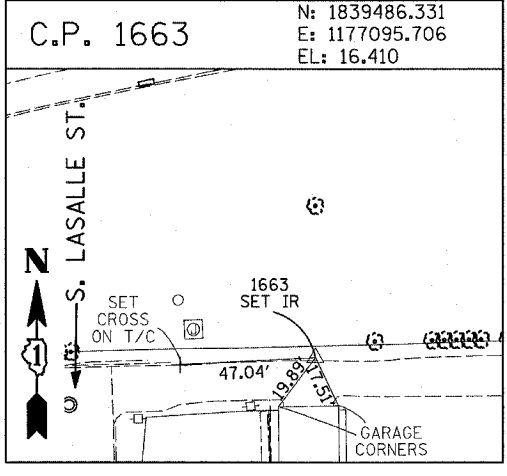
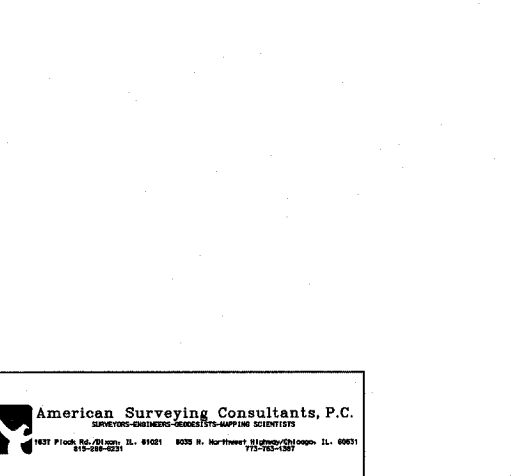
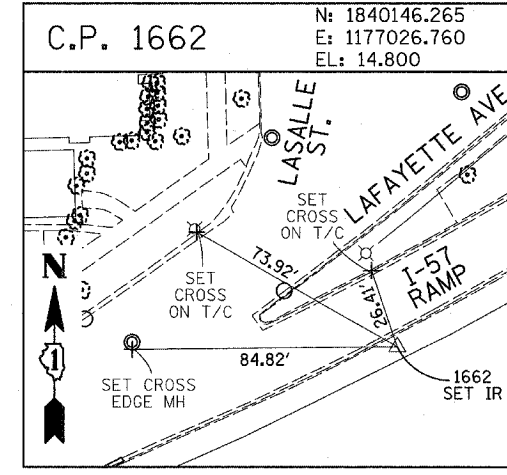
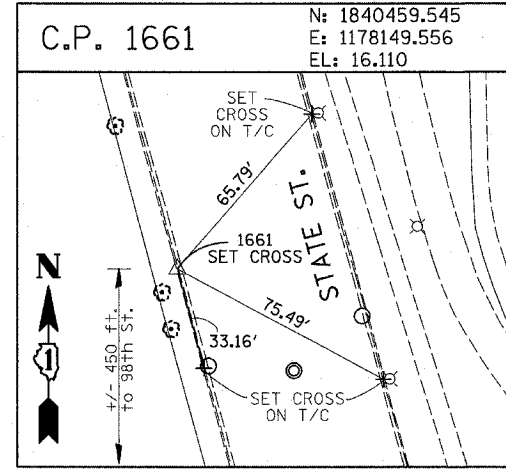
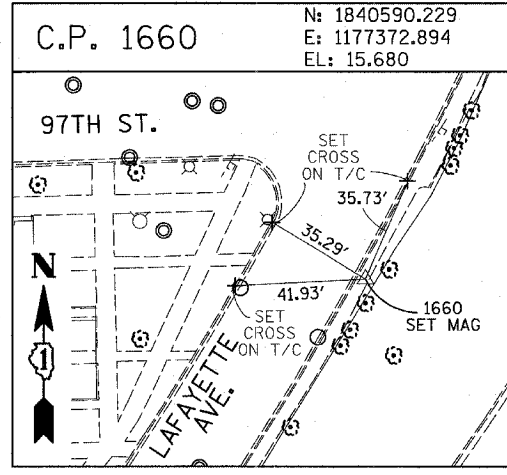
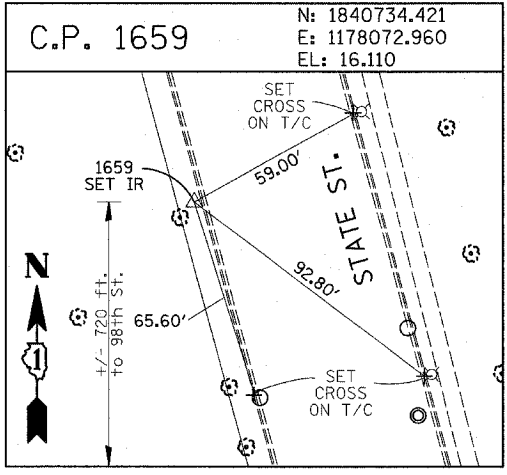
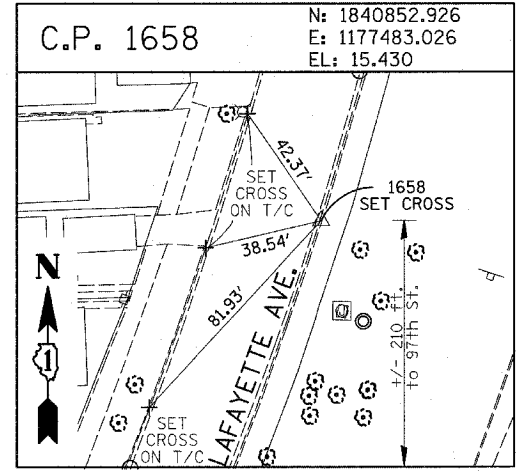
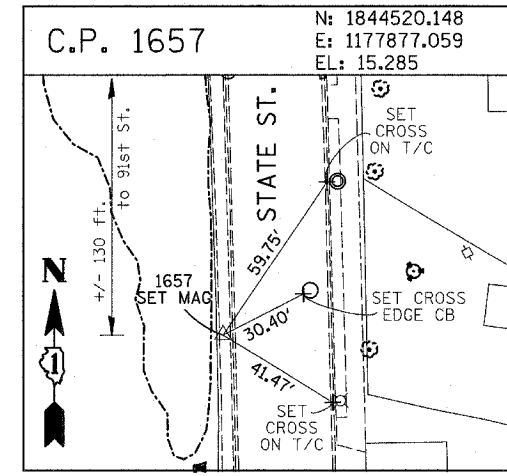
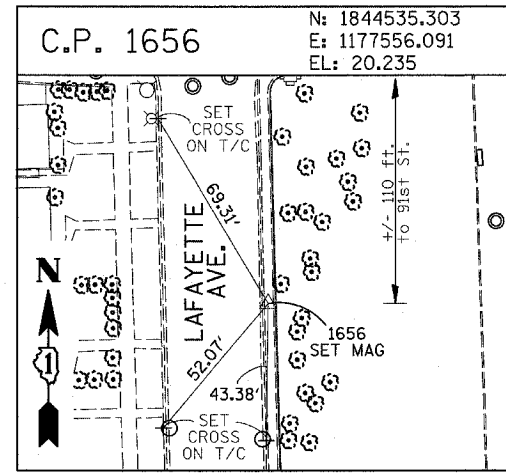
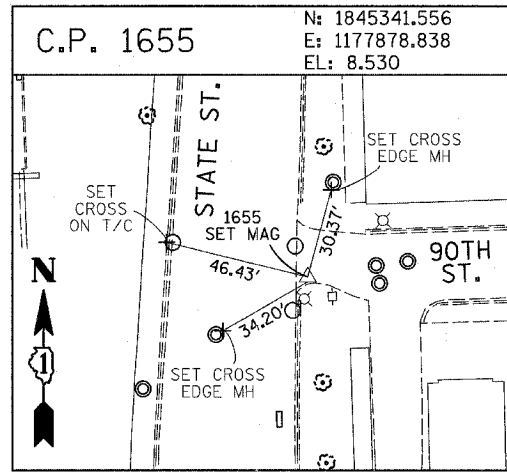
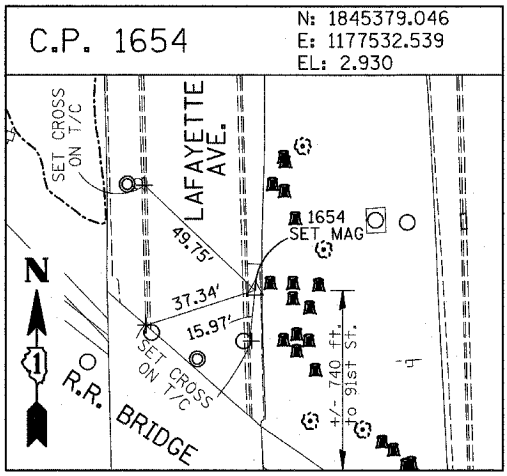
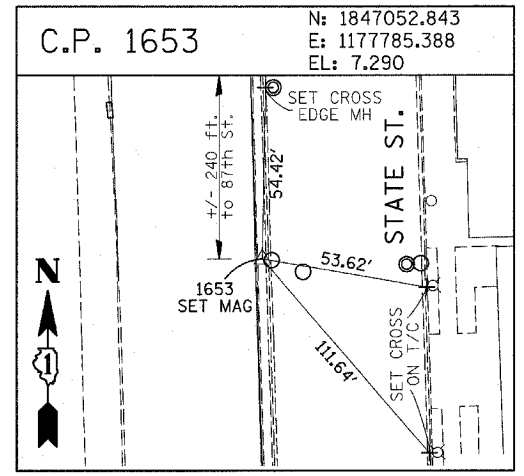
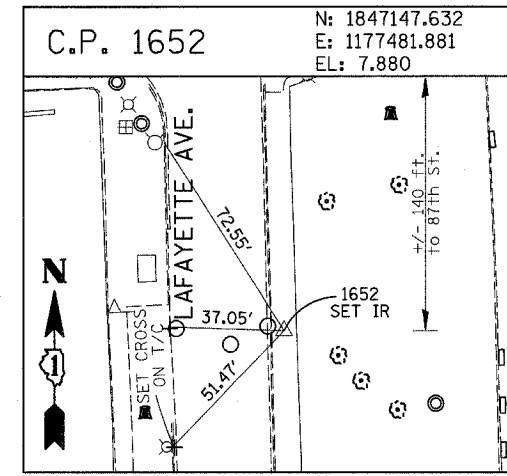
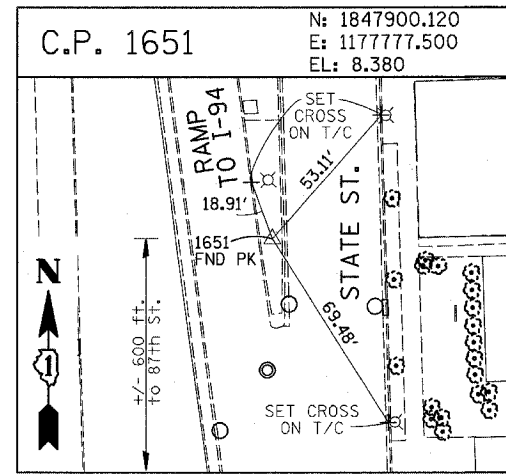
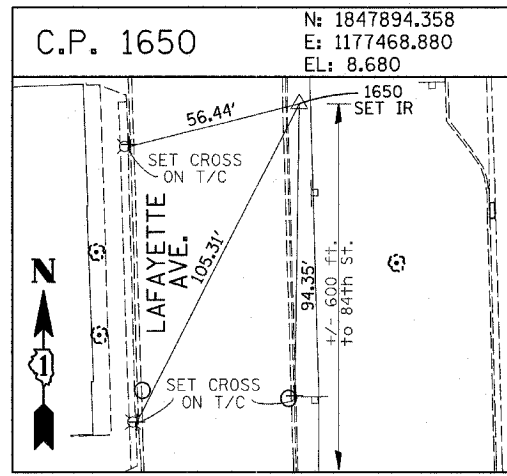
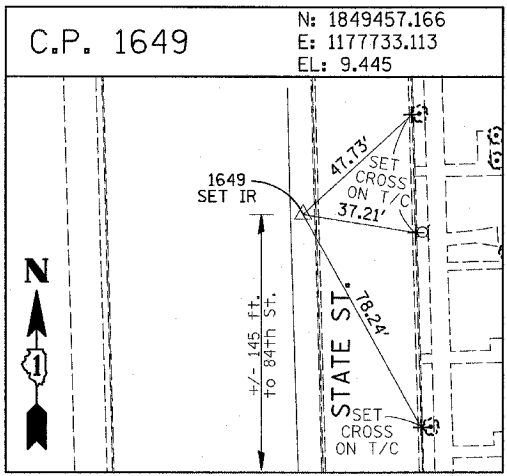
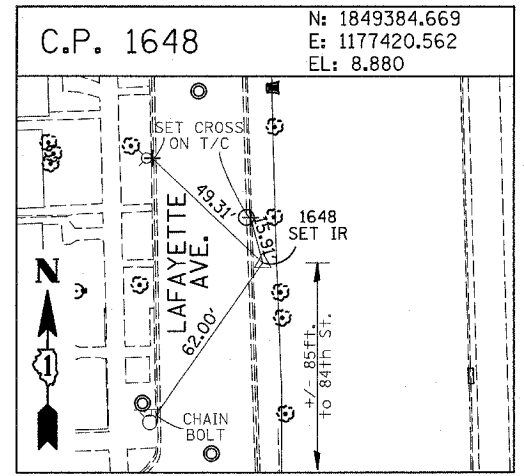


F.A.I. RTE.	SECTION	COUNTY	TOTAL SHEETS	SHEET NO.
94	1818 R-3	COOK	265	30
STA. 2316+00		TO STA. 2367+00		
FED. ROAD DIST. NO.	ILLINOIS	FED. AID PROJECT		
			60B17	



American Surveying Consultants, P.C.  
 1437 Pine Bluff Rd., Suite 111, Chicago, IL 60641  
 312-467-8231

REVISIONS	
NAME	DATE

ILLINOIS DEPARTMENT OF TRANSPORTATION  
 F.A.I. 94 (DAN RYAN EXPRESSWAY)  
 SURVEY TIES FOR CONTROL POINTS  
 SHEET 4 OF 7  
 SCALE: 1"=30'  
 DATE: MARCH 7, 2006  
 DRAWN BY: GSP  
 CHECKED BY: MMW