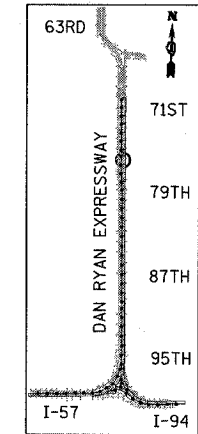
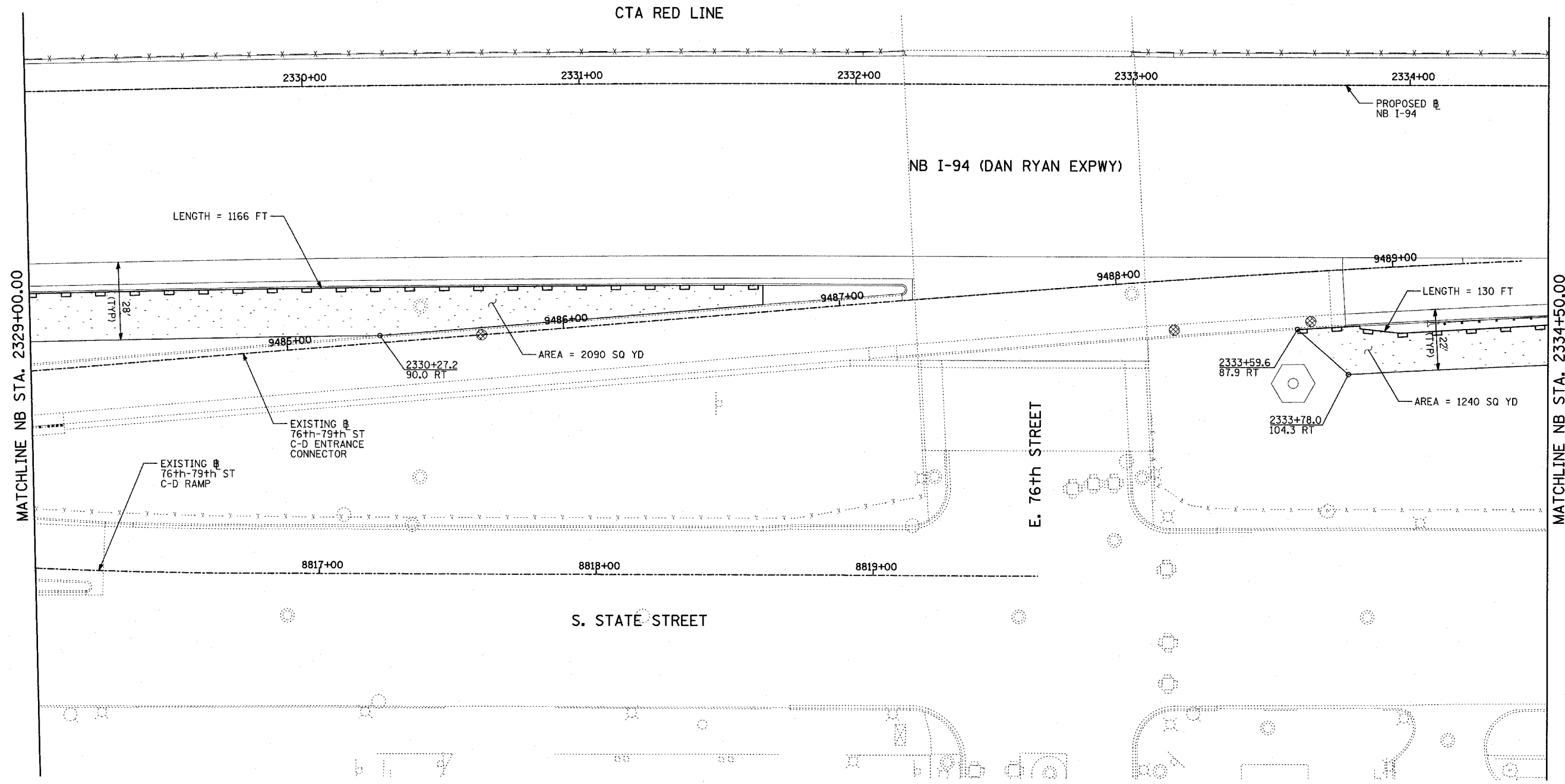
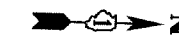
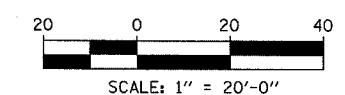


F.A.I. RTE.	SECTION	COUNTY	TOTAL SHEETS	SHEET NO.
94	1818 R-3	COOK	265	99
STA. 2316+00		TO STA. 2367+00		
FED. ROAD DIST. NO.	ILLINOIS	FED. AID PROJECT		

60B17



LOCATION MAP



- LEGEND:**
- TEMPORARY EROSION CONTROL SEEDING
 - SEDIMENT CONTROL, SILT FENCE
 - INLET FILTER, TO BE INSTALLED IN OFF PROJECT DRAINAGE STRUCTURES ACCEPTING STORMWATER RUNOFF
 - TEMPORARY FENCE
 - TEMPORARY DITCH CHECK
 - PROPOSED DRAINAGE SWALE (SEE DRAINAGE PLANS)
 - EXISTING DRAINAGE SWALE
 - TEMPORARY FENCE FOR TREE PROTECTION (15 FEET PER SIDE = 60 FEET TOTAL)

TOTAL NUMBER OF INLET FILTERS THIS SHEET: 3
 TOTAL NUMBER OF TEMPORARY DITCH CHECKS THIS SHEET: 0
 TOTAL NUMBER OF TREES TO BE PROTECTED THIS SHEET: 0

REVISIONS	
NAME	DATE

ILLINOIS DEPARTMENT OF TRANSPORTATION
 F.A.I. 94 (DAN RYAN EXPRESSWAY)
 EROSION CONTROL PLAN
 NB I-94 (DAN RYAN EXPRESSWAY)
 STA. 2329+00.00 TO 2334+50.00
 (SHEET 4 OF 11)
 SCALE: 1"=20'
 DATE: MARCH 7, 2006
 DRAWN BY: JJS
 CHECKED BY: JPA

TYLINTERNATIONAL