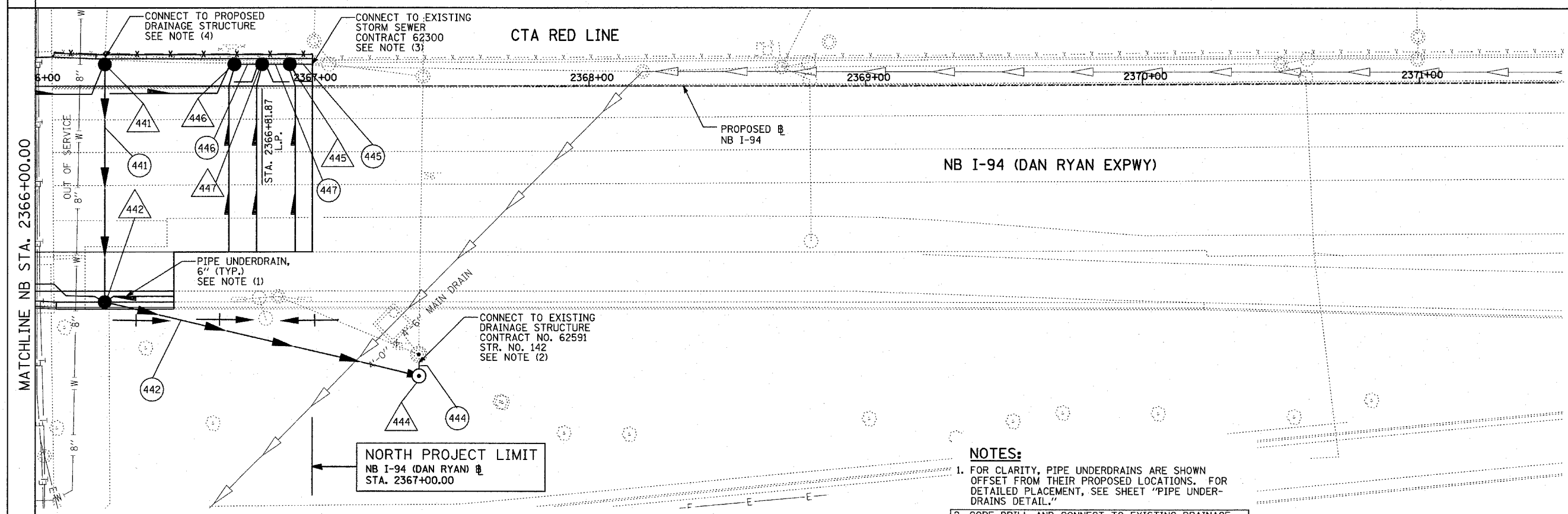
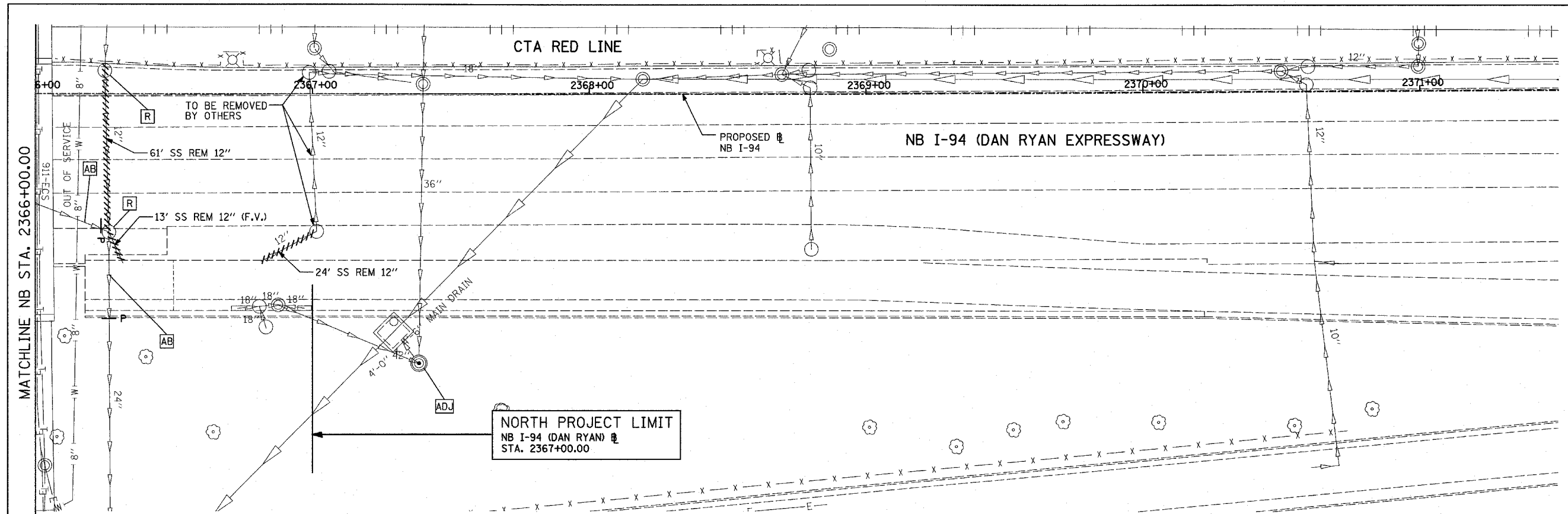
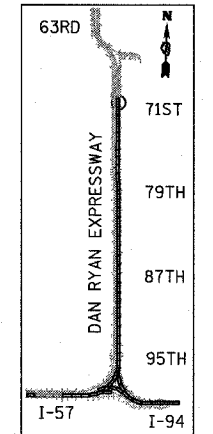
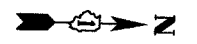


| | | | | |
|---------------------|----------|------------------|--------------|-----------|
| F.A.I. RTE. | SECTION | COUNTY | TOTAL SHEETS | SHEET NO. |
| 94 | 1818 R-3 | COOK | 265 | 118 |
| STA. 2316+00 | | TO STA. 2367+00 | | |
| FED. ROAD DIST. NO. | ILLINOIS | FED. AID PROJECT | | |

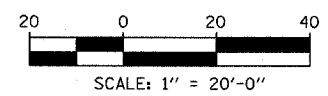
60B17



EXISTING CONDITIONS
PROPOSED IMPROVEMENTS



LOCATION MAP



S. STATE STREET

LEGEND:

| | | | |
|--|---|--|-----------------|
| | EXISTING COMBINED SEWER | | SEWER PLUG |
| | PROPOSED STORM SEWER NUMBER (X=SHEET NO., Y=PIPE NO.) | | FIELD VERIFY |
| | PROPOSED STRUCTURE NUMBER (X=SHEET NO., Y=STRUCTURE NO.) | | UTILITY REMOVAL |
| | PIPE STUBOUT TO BE PLUGGED | | |

NOTES:

1. FOR CLARITY, PIPE UNDERDRAINS ARE SHOWN OFFSET FROM THEIR PROPOSED LOCATIONS. FOR DETAILED PLACEMENT, SEE SHEET "PIPE UNDERDRAINS DETAIL."
2. CORE DRILL AND CONNECT TO EXISTING DRAINAGE STRUCTURE. CONNECTION COST SHALL BE INCLUDED IN THE COST TO CONSTRUCT THE STORM SEWER.
3. COST SHALL NOT BE PAID FOR SEPARATELY BUT INCLUDED IN COST OF SEWER INSTALLATION.
4. ALL CONNECTIONS TO EXISTING SEWER OR STRUCTURE ALONG CTA SHALL BE FIELD VERIFIED PRIOR TO INSTALLATION AND COORDINATED WITH CTA CONSTRUCTION. COST SHALL BE INCLUDED IN THE COST TO CONSTRUCT THE DRAINAGE STRUCTURE.

| REVISIONS | |
|-----------|------|
| NAME | DATE |
| | |
| | |
| | |
| | |
| | |
| | |

ILLINOIS DEPARTMENT OF TRANSPORTATION
F.A.I. 94 (DAN RYAN EXPRESSWAY)
DRAINAGE AND UTILITY PLAN
NB I-94 (DAN RYAN EXPRESSWAY)
NB I-94 STA. 2366+00.00 TO 2367+00.00

SCALE: 1"=20'
DATE: MARCH 7, 2006
DRAWN BY: MB
CHECKED BY: DA