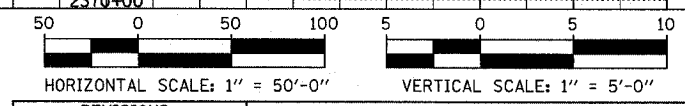
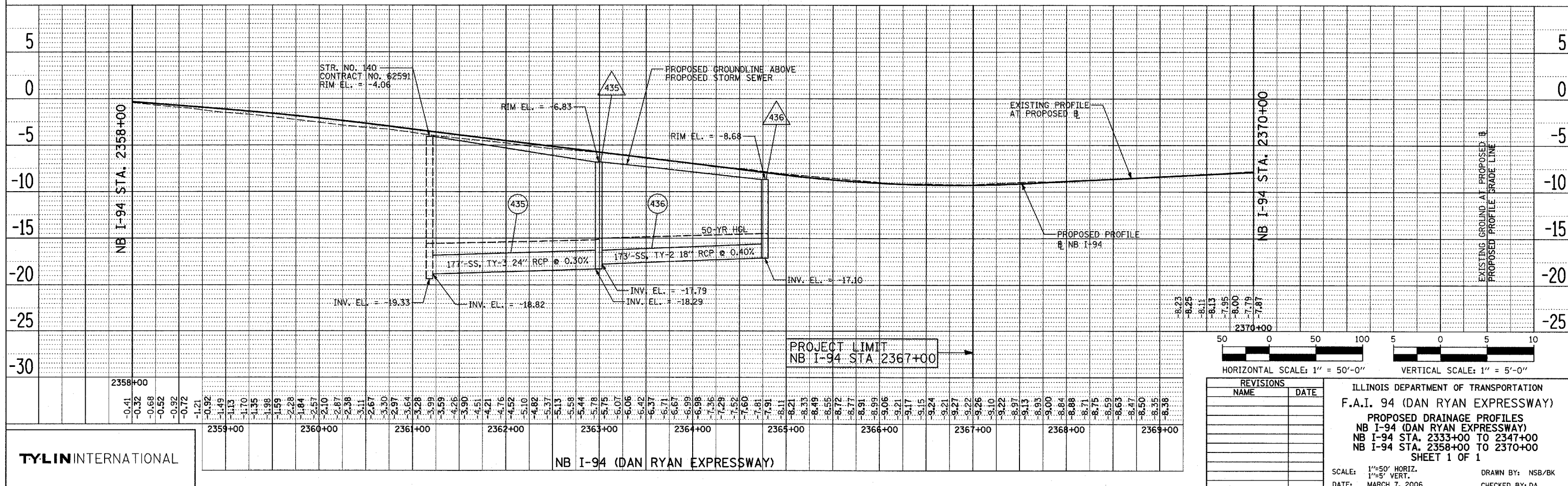
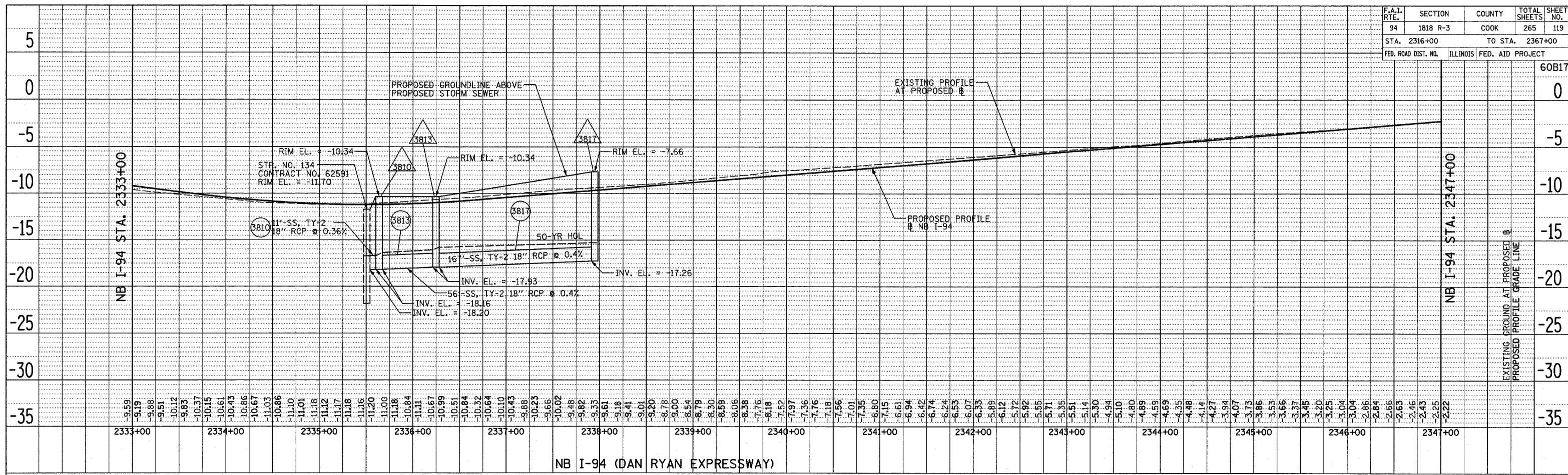


F.A.I. RTE.	SECTION	COUNTY	TOTAL SHEETS	SHEET NO.
94	1818 R-3	COOK	265	119
STA. 2316+00		TO STA. 2367+00		
FED. ROAD DIST. NO.	ILLINOIS	FED. AID PROJECT		



REVISIONS	
NAME	DATE

ILLINOIS DEPARTMENT OF TRANSPORTATION  
 F.A.I. 94 (DAN RYAN EXPRESSWAY)  
 PROPOSED DRAINAGE PROFILES  
 NB I-94 (DAN RYAN EXPRESSWAY)  
 NB I-94 STA. 2333+00 TO 2347+00  
 NB I-94 STA. 2358+00 TO 2370+00  
 SHEET 1 OF 1

SCALE: 1"=50' HORIZ.  
 1"=5' VERT.  
 DATE: MARCH 7, 2006

DRAWN BY: NSB/BK  
 CHECKED BY: DA

DATE: \_\_\_\_\_ BY: \_\_\_\_\_  
 REVIEWED: \_\_\_\_\_  
 PLAN NO. \_\_\_\_\_  
 NOTE BOOK NO. \_\_\_\_\_  
 ALIGNMENT CHECKED \_\_\_\_\_  
 DRAINAGE CHECKED \_\_\_\_\_  
 CADD FILE NAME: \_\_\_\_\_

DATE: \_\_\_\_\_ BY: \_\_\_\_\_  
 REVIEWED: \_\_\_\_\_  
 PLAN NO. \_\_\_\_\_  
 NOTE BOOK NO. \_\_\_\_\_  
 ALIGNMENT CHECKED \_\_\_\_\_  
 DRAINAGE CHECKED \_\_\_\_\_  
 CADD FILE NAME: \_\_\_\_\_

TYLIN INTERNATIONAL

NB I-94 (DAN RYAN EXPRESSWAY)

3/7/06 09:05 004137.dwg