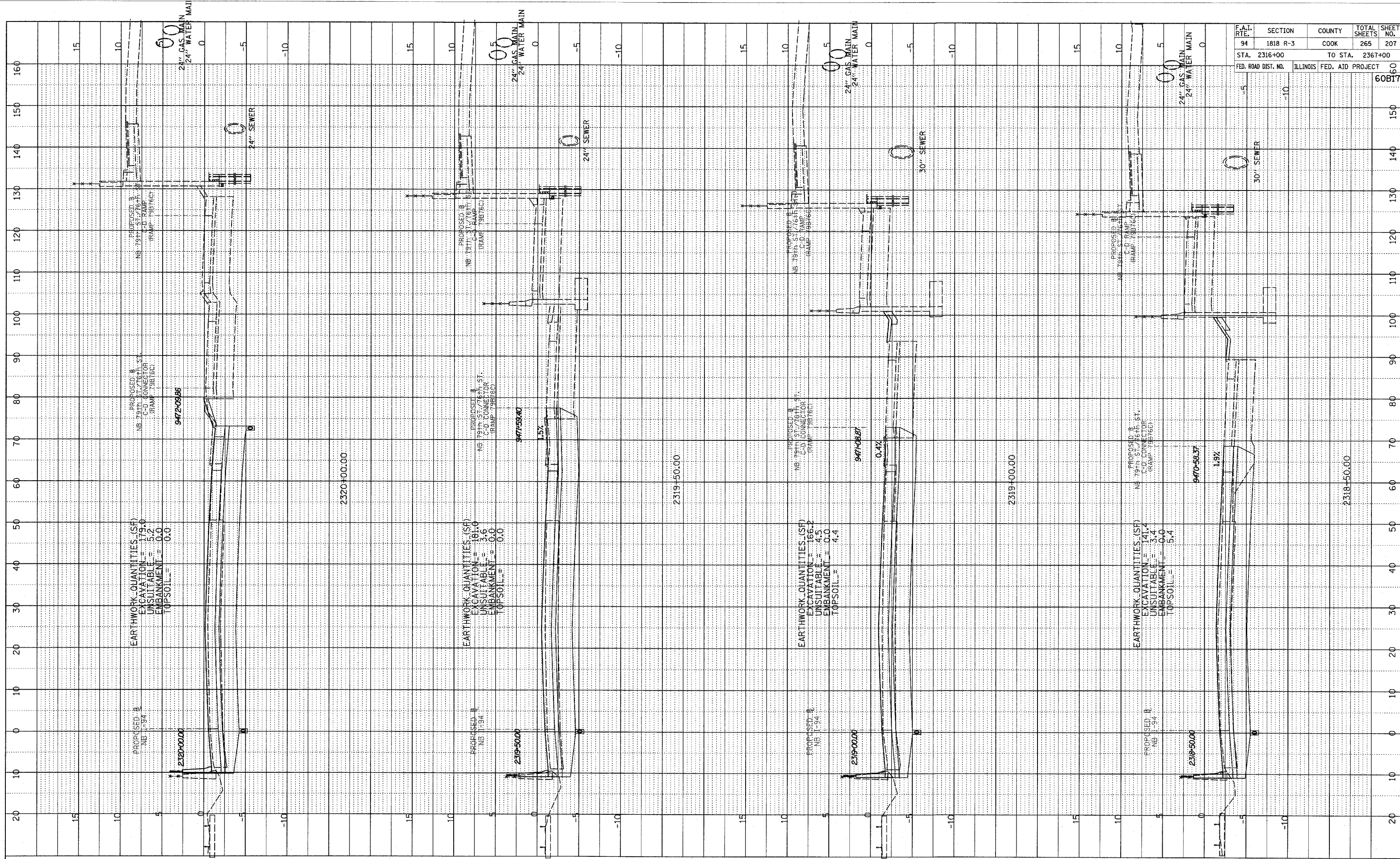
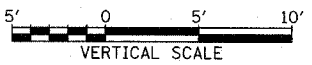


PROFILE SHEET
 GRADES CHECKED
 NOTE BOOK NO. 101
 DATE
 BY
 NO. 101
 DATE
 BY
 NO. 101
 DATE
 BY



F.A.I. RTE.	SECTION	COUNTY	TOTAL SHEETS	SHEET NO.
94	1818 R-3	COOK	265	207
STA. 2316+00		TO STA. 2367+00		
FED. ROAD DIST. NO.		ILLINOIS FED. AID PROJECT		
		60B17		

TYLIN INTERNATIONAL



NORTHBOUND I-94 (DAN RYAN EXPWY)
 STA. 2319+50 TO STA. 2320+50

03/03/2006 04:09:20 PM