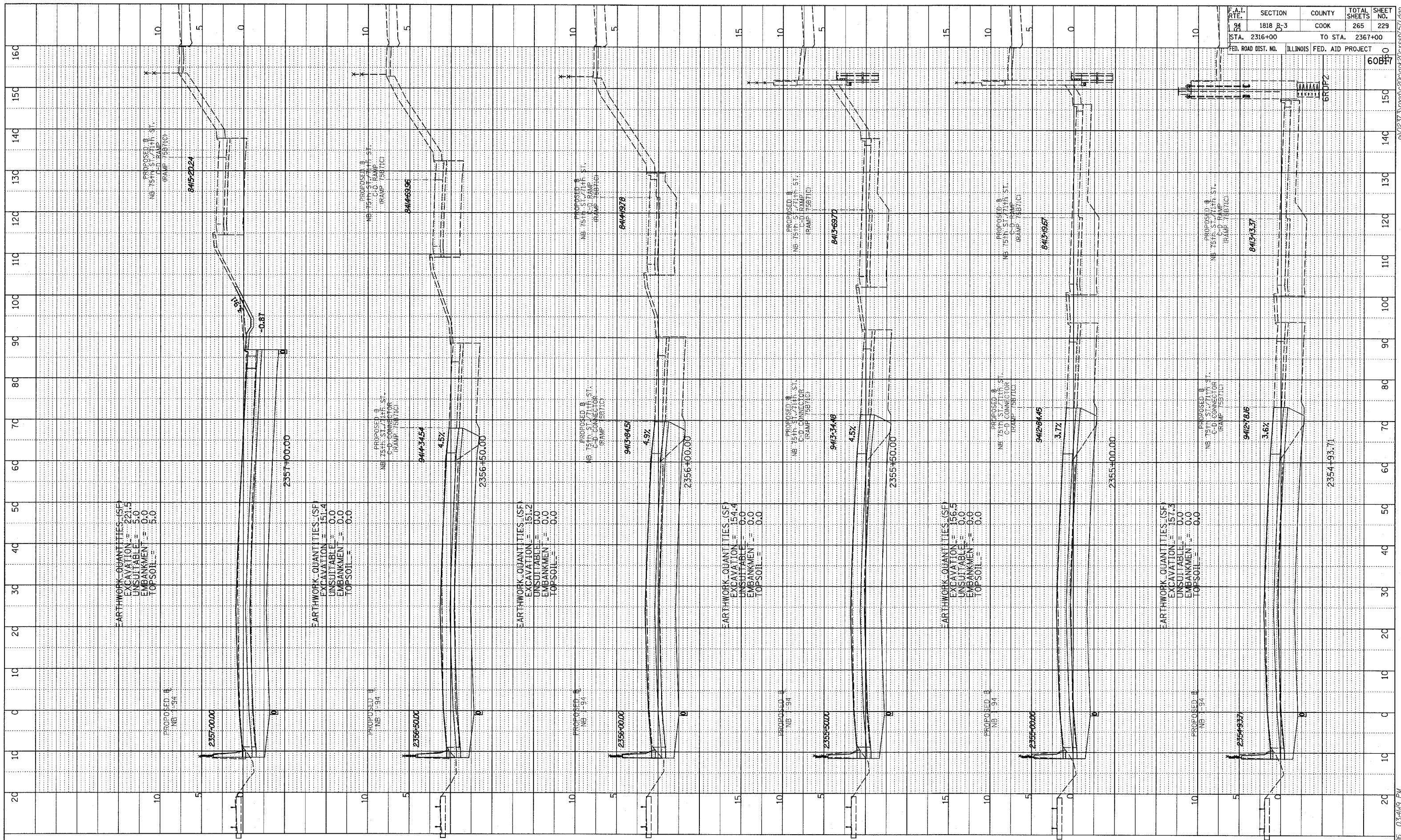


PROFILE	REVISION	DATE
NO.	BY	
NOTE BOOK	ROUTED	
STRUCTURE	GRADES CHECKED	
NOTATION	STATUS	CHKD

F.A.I. RTE.	SECTION	COUNTY	TOTAL SHEETS	SHEET NO.
1818	B-3	COOK	265	229
STA. 2316+00	TO STA. 2367+00		60B97	
FED. ROAD DIST. NO.		ILLINOIS	FED. AID PROJECT	



TYLIN INTERNATIONAL



NORTHBOUND I-94 (DAN RYAN EXPWY)  
 STA. 2355+50 TO STA. 2358+00

03/03/2006 03:49 PM