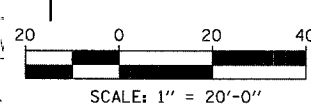
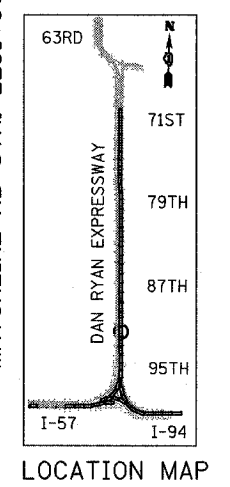
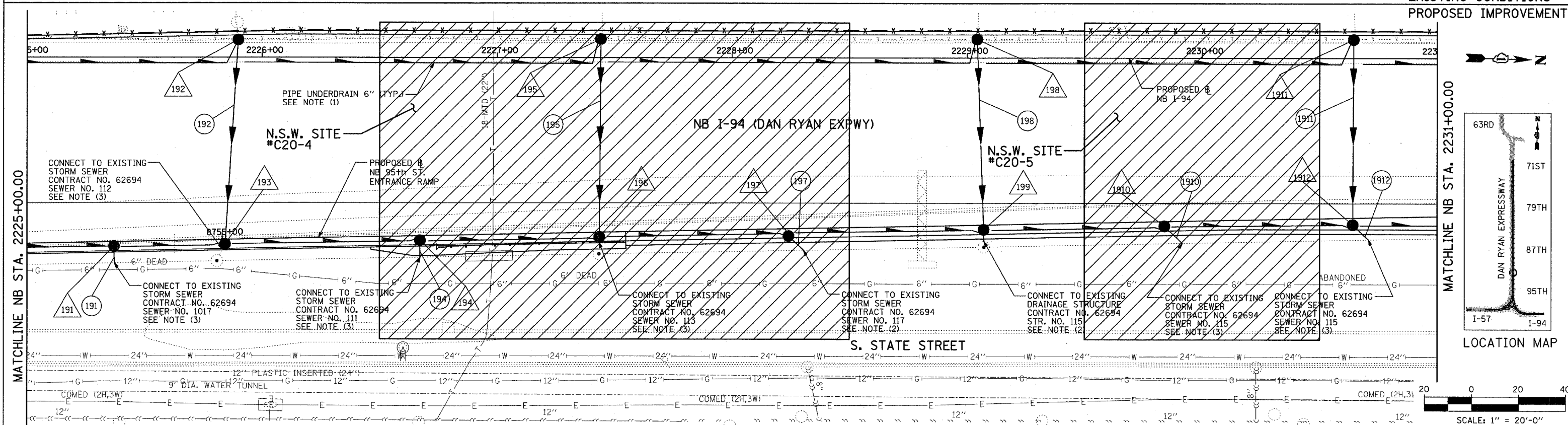
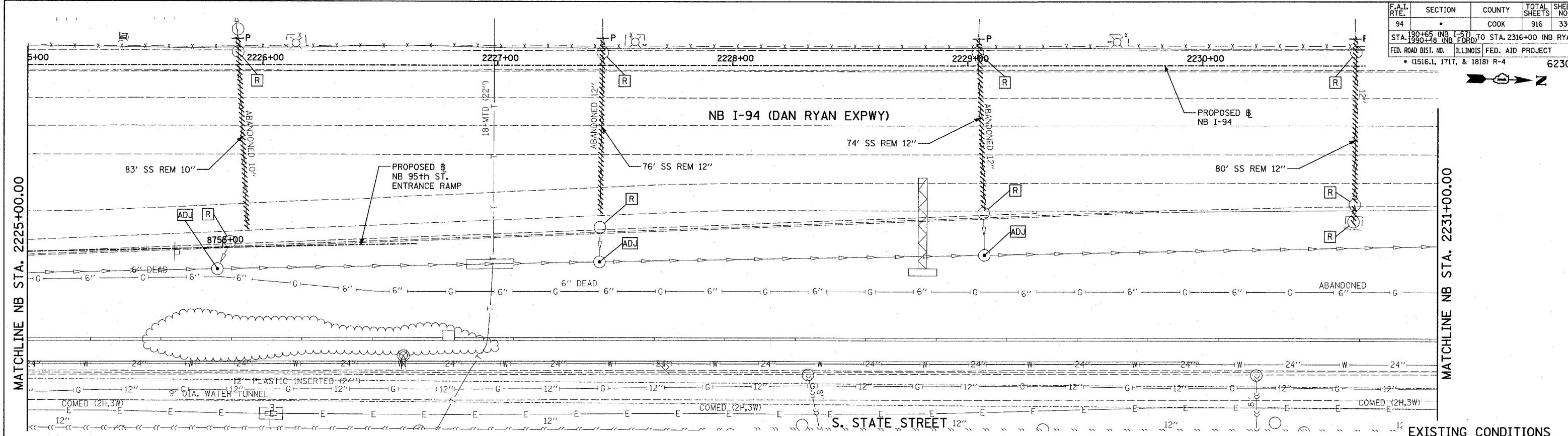


F.A.I. RTE.	SECTION	COUNTY	TOTAL SHEETS	SHEET NO.
94		COOK	916	330
STA. 190+65 (NB I-57) TO STA. 2316+00 (NB RYAN)				
FED. ROAD DIST. NO. ILLINOIS FED. AID PROJECT				
• (1516, 1717, & 1818) R-4 62304				



**TYLIN INTERNATIONAL**

**LEGEND:**

	EXISTING COMBINED SEWER		SEWER PLUG
	PROPOSED STORM SEWER NUMBER (X=SHEET NO., Y=PIPE NO.)		FIELD VERIFY
	PROPOSED STRUCTURE NUMBER (X=SHEET NO., Y=STRUCTURE NO.)		UTILITY REMOVAL
	PIPE STUBOUT TO BE PLUGGED		PROPOSED CATCH BASIN CONSTRUCTED IN CONCURRENT CONTRACT 62593
			PROPOSED STORM SEWER CONSTRUCTED IN CONCURRENT CONTRACT 62593

- NOTES:**
- FOR CLARITY, PIPE UNDERDRAINS ARE SHOWN OFFSET FROM THEIR PROPOSED LOCATIONS. FOR DETAILED PLACEMENT, SEE SHEET "PIPE UNDERDRAINS DETAIL."
  - CORE DRILL AND CONNECT TO EXISTING DRAINAGE STRUCTURE. CONNECTION COST SHALL BE INCLUDED IN THE COST TO CONSTRUCT THE STORM SEWER.
  - COST SHALL NOT BE PAID FOR SEPARATELY BUT INCLUDED IN COST OF SEWER INSTALLATION.

NSW - NON SPECIAL WASTE SITES ADDED TO SHEET

REVISIONS	
NAME	DATE

ILLINOIS DEPARTMENT OF TRANSPORTATION  
**F.A.I. 94 (DAN RYAN EXPRESSWAY)**  
**DRAINAGE AND UTILITY PLAN**  
**NB I-94 (DAN RYAN EXPRESSWAY)**  
**NB I-94 STA. 2225+00.00 TO 2231+00.00**

SCALE: 1"=20'  
 DATE: MARCH 7, 2006  
 DRAWN BY: MB  
 CHECKED BY: DA