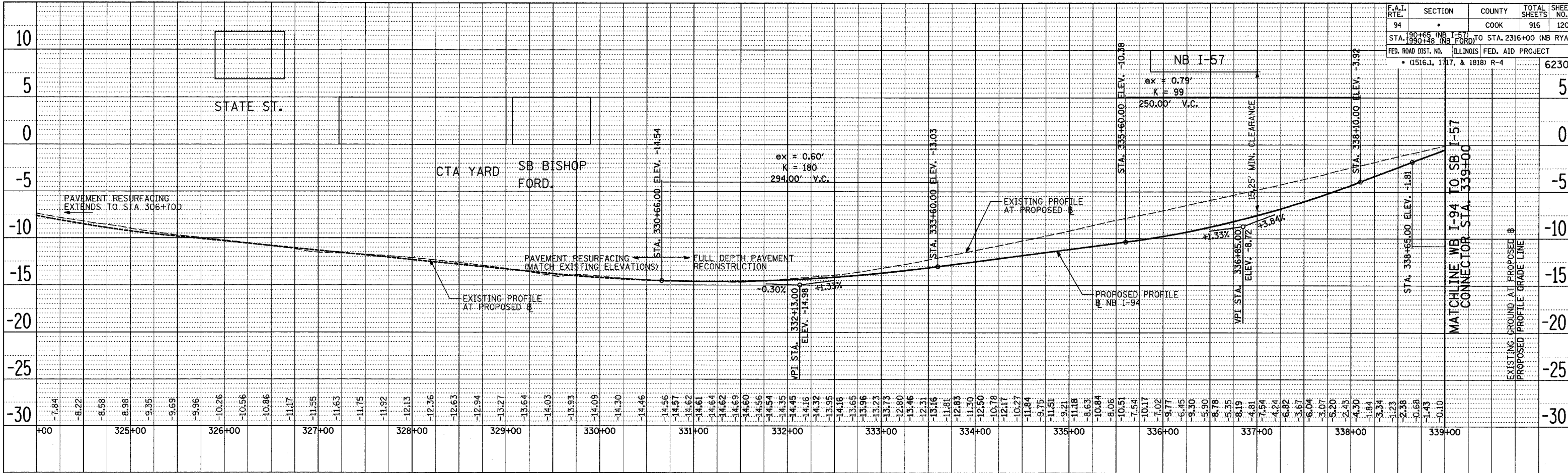
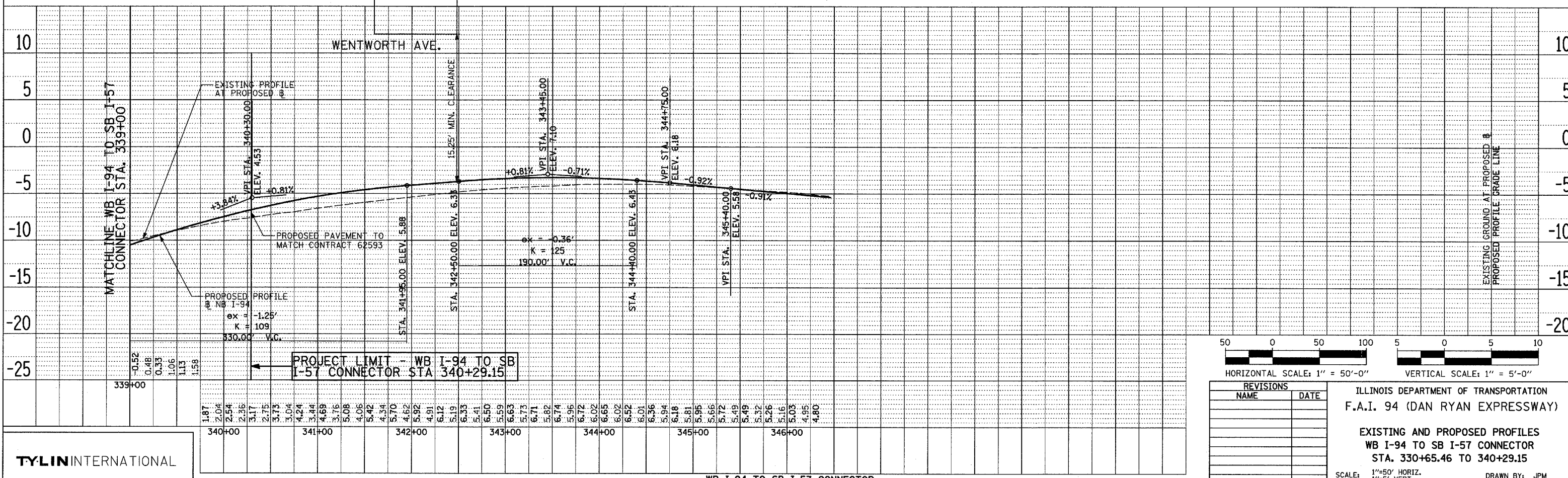


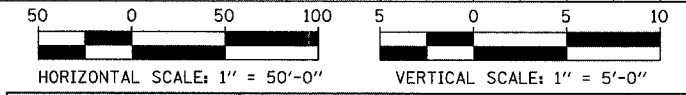
F.A.I. RTE.	SECTION	COUNTY	TOTAL SHEETS	SHEET NO.
94	*	COOK	916	120
STA. 190+65 (NB I-57) TO STA. 2316+00 (NB RYAN)				
STA. 1990+48 (NB FORD)				
FED. ROAD DIST. NO. ILLINOIS FED. AID PROJECT				
* (1516.1, 1717, & 1818) R-4				



WB I-94 TO SB I-57 CONNECTOR



WB I-94 TO SB I-57 CONNECTOR



REVISIONS	
NAME	DATE

ILLINOIS DEPARTMENT OF TRANSPORTATION  
 F.A.I. 94 (DAN RYAN EXPRESSWAY)  
 EXISTING AND PROPOSED PROFILES  
 WB I-94 TO SB I-57 CONNECTOR  
 STA. 330+65.46 TO 340+29.15  
 SCALE: 1"=50' HORIZ.  
 1"=5' VERT.  
 DATE: MARCH 7TH, 2006  
 DRAWN BY: JPM  
 CHECKED BY: MPG

TYLIN INTERNATIONAL

PLAN	SURVEYED	DATE
NOTE BOOK	PLOTTED	
NO.	ALIGNED	
	REVISIONS	
	CAD FILE NAME	

PLAN	SURVEYED	DATE
NOTE BOOK	PLOTTED	
NO.	ALIGNED	
	REVISIONS	
	CAD FILE NAME	