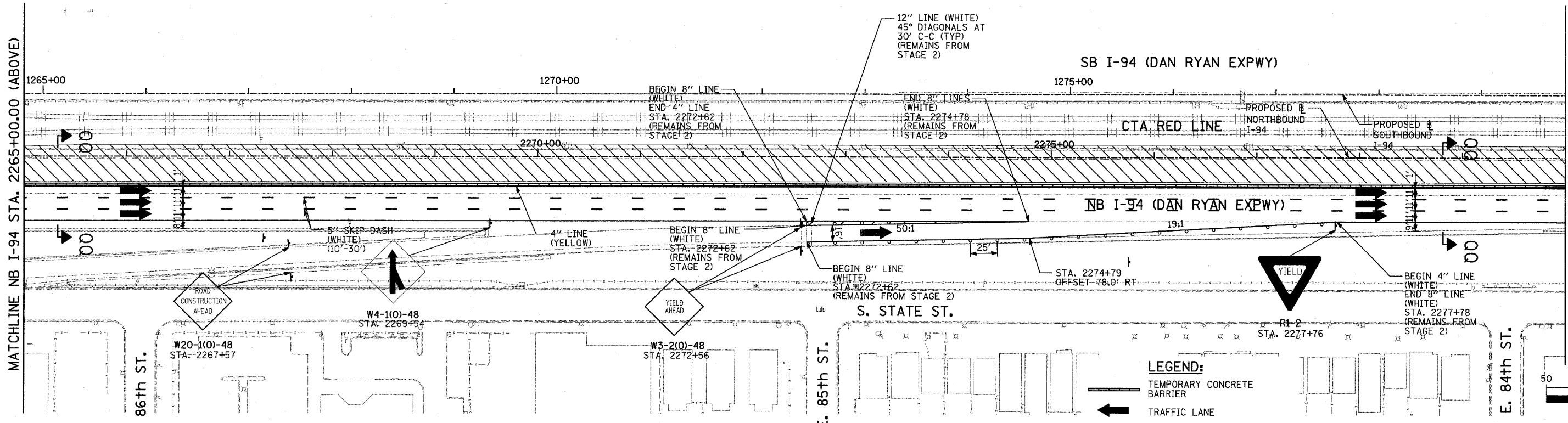
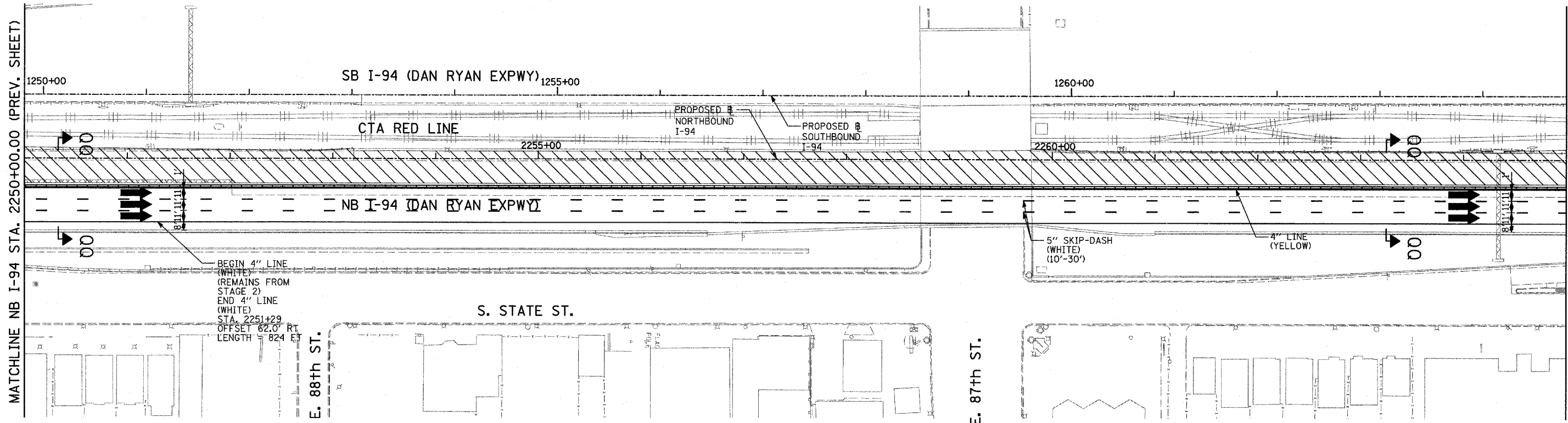
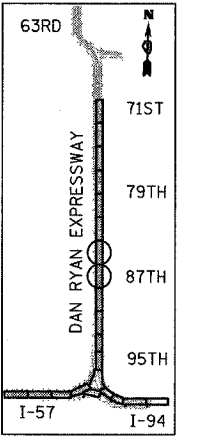


F.A.I. RTE.	SECTION	COUNTY	TOTAL SHEETS	SHEET NO.
94		COOK	916	247
STA. 190+65 (NB I-57) TO STA. 2316+00 (NB RYAN)				
STA. 1990+48 (NB FORD)				
FED. ROAD DIST. NO.	ILLINOIS	FED. AID PROJECT		
• (1516.1, 1717, & 1818) R-4				
				62304

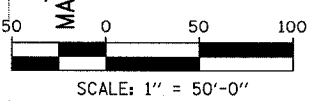


MATCHLINE NB I-94 STA. 2265+00.00 (BELOW)

MATCHLINE NB I-94 STA. 2280+00.00 (NEXT SHEET)



LOCATION MAP



- LEGEND:**
- TEMPORARY CONCRETE BARRIER
 - TRAFFIC LANE
 - WORK ZONE
 - BARRICADE, TYPE III
 - DRUM WITH MONO-DIRECTIONAL STEADY BURNING LIGHT
 - ARROW BOARD
 - TEMPORARY PAVEMENT

REVISIONS	
NAME	DATE

ILLINOIS DEPARTMENT OF TRANSPORTATION
 F.A.I. 94 (DAN RYAN EXPRESSWAY)
 MAINTENANCE OF TRAFFIC PLAN
 STAGE 3 - NB I-94
 NB I-94 STA. 2250+00 TO 2280+00
 SHEET 7 OF 9
 SCALE: 1"=50'-0" DRAWN BY: RTM
 DATE: MARCH 7, 2006 CHECKED BY: JDF

TYLIN INTERNATIONAL

3/3/2006 3:48:36 PM